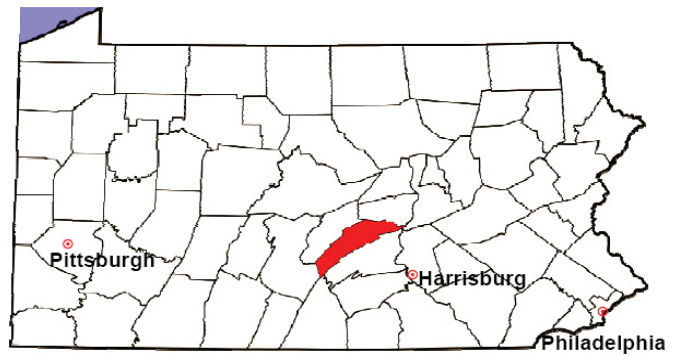


JUNIATA COUNTY

2008 Population Estimate: 23,146

Class of County: 7th

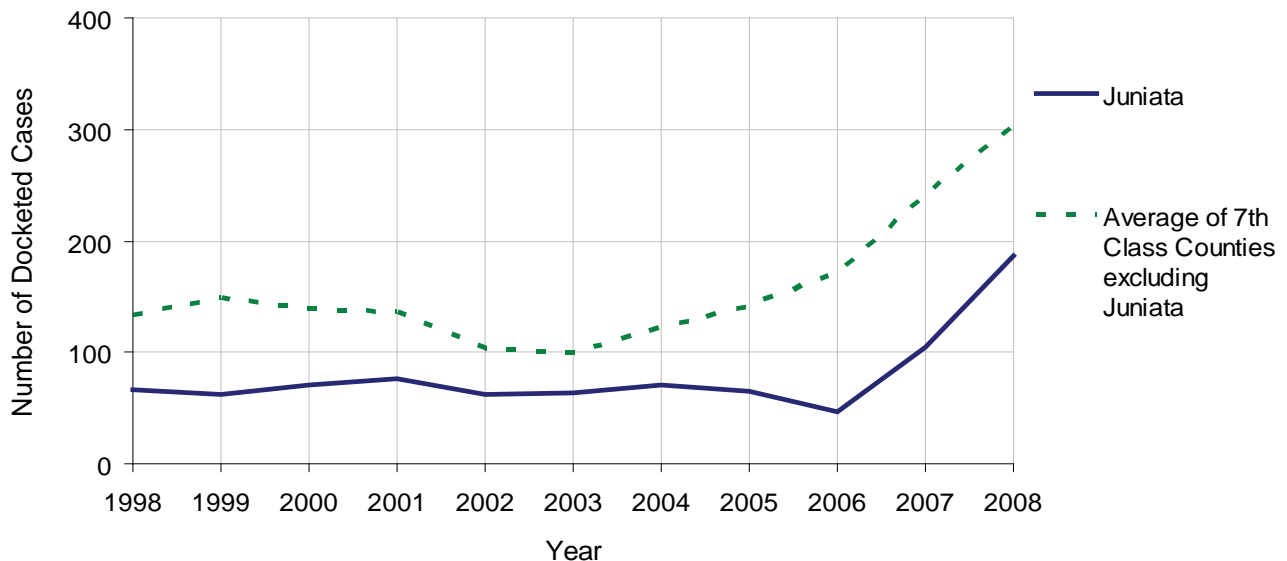
No. of Common Pleas Court Judgeships: 2
(Juniata and Perry combined)



2008 Civil		Civil Action		
Docketed Cases		186		
Arbitrated Cases		3		
Trial-Ready Cases:		Civil Action	Other	Total
Cases Pending 1/1/08		3	0	3
Became Trial Ready in '08		0	0	0
Restored to Trial List		0	0	0
Appeals from Arbitration		0	0	0
Cases Available for Trial		3	0	3
Disposed By:				
Settlement		0	0	0
Non-Jury Trial		1	0	1
Jury Trial		0	0	0
Stricken from Trial List		0	0	0
Other		0	0	0
Cases Disposed		1	0	1
Cases Pending 12/31/08		2	0	2

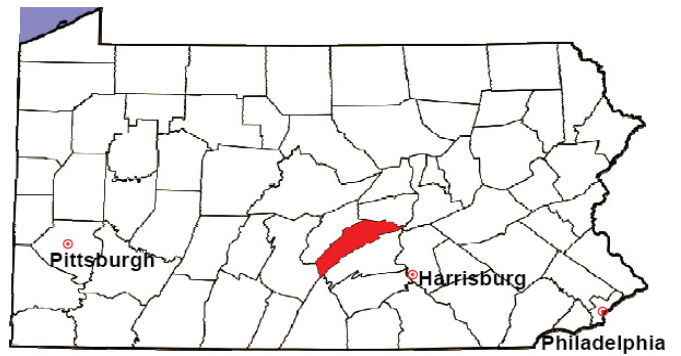
Age of Trial-Ready Cases as of 12/31/08 (Civil Action Only)		
0-6 months	0	0%
7-12 months	0	0%
13-18 months	0	0%
19-24 months	0	0%
25-30 months	0	0%
31-36 months	0	0%
Over 36 months	2	100%
Total	2	100%

Docketed Cases, 1998-2008



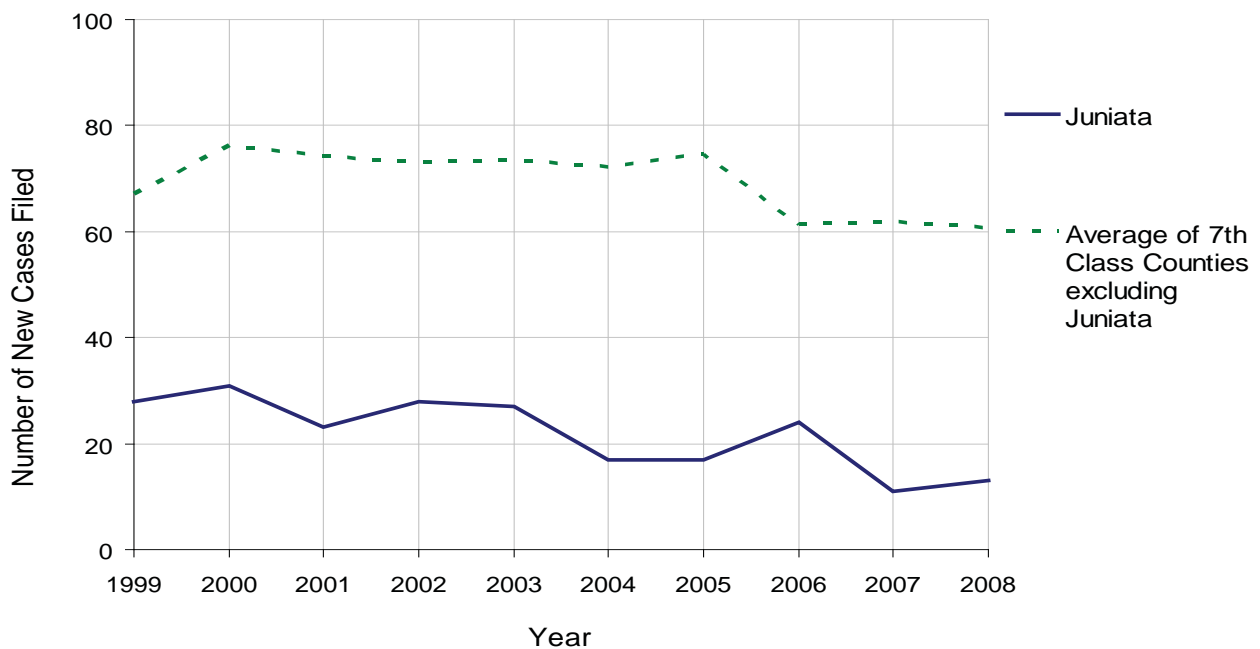
JUNIATA COUNTY

2008 Population Estimate: 23,146
 Class of County: 7th
 No. of Common Pleas Court Judgeships: 2
 (Juniata and Perry combined)



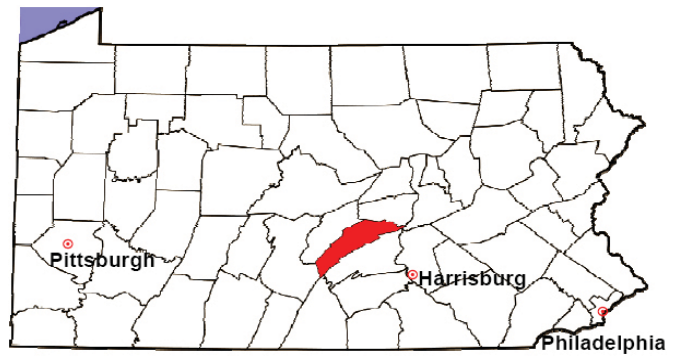
2008 Protection From Abuse	No. of Petitions	%
Cases Pending 1/1/08	1	
New Cases Filed in '08	13	
Cases Available for Processing	14	
Processed By:		
Final Order After Hearing	2	18.2%
Final Order by Stipulation or Agreement	4	36.4%
Dismissal	3	27.3%
Withdrawal	2	18.2%
Other	0	0.0%
Cases Processed	11	100.0%
Cases Pending 12/31/08	3	

PFA New Cases Filed, 1999-2008



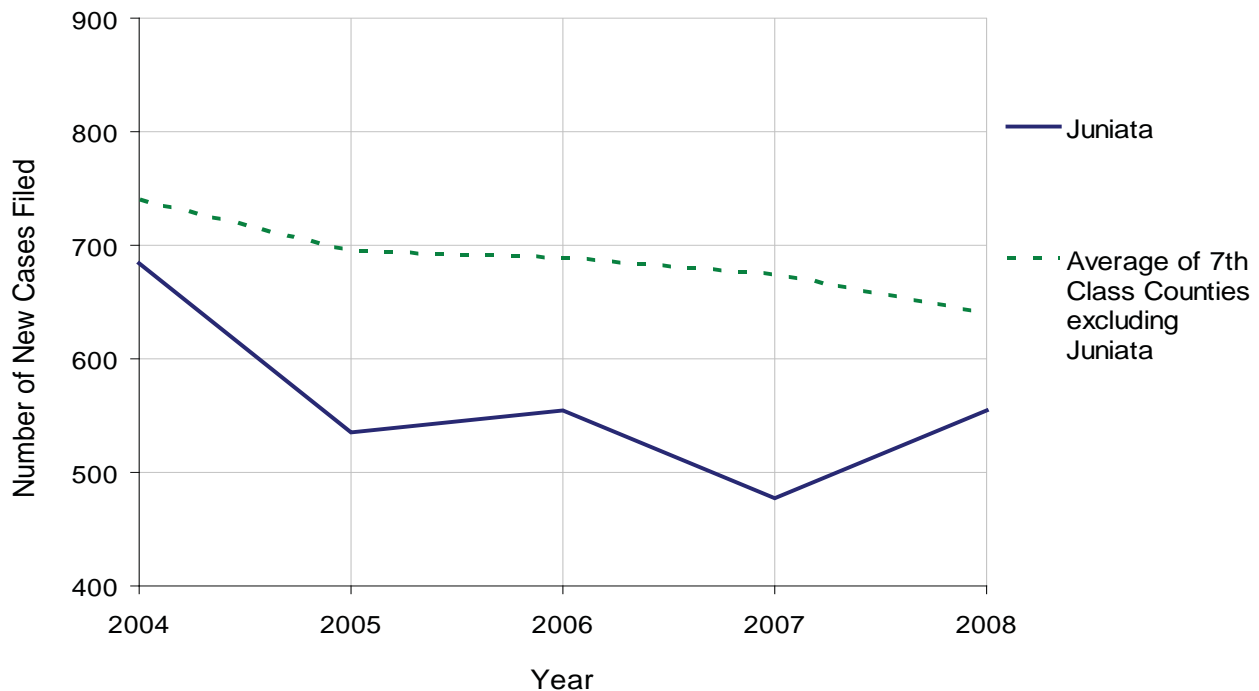
JUNIATA COUNTY

2008 Population Estimate: 23,146
 Class of County: 7th
 No. of Common Pleas Court Judgeships: 2
 (Juniata and Perry combined)



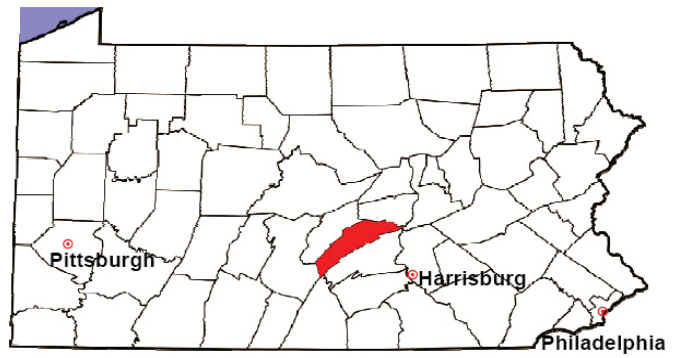
2008 Spousal & Child Support	No. of Petitions	%
Cases Pending 1/1/08	71	
New Cases Filed in '08	554	
Dockets Transferred In (+)	7	
Dockets Transferred Out (-)	10	
Cases Available for Processing	622	
Processed By:		
Judge	10	1.9%
Intake Officer	528	98.0%
Hearing Officer	0	0.0%
Other	1	0.2%
Cases Processed	539	100.0%
Cases Pending 12/31/08	83	

Spousal & Child Support New Cases Filed, 1998-2008



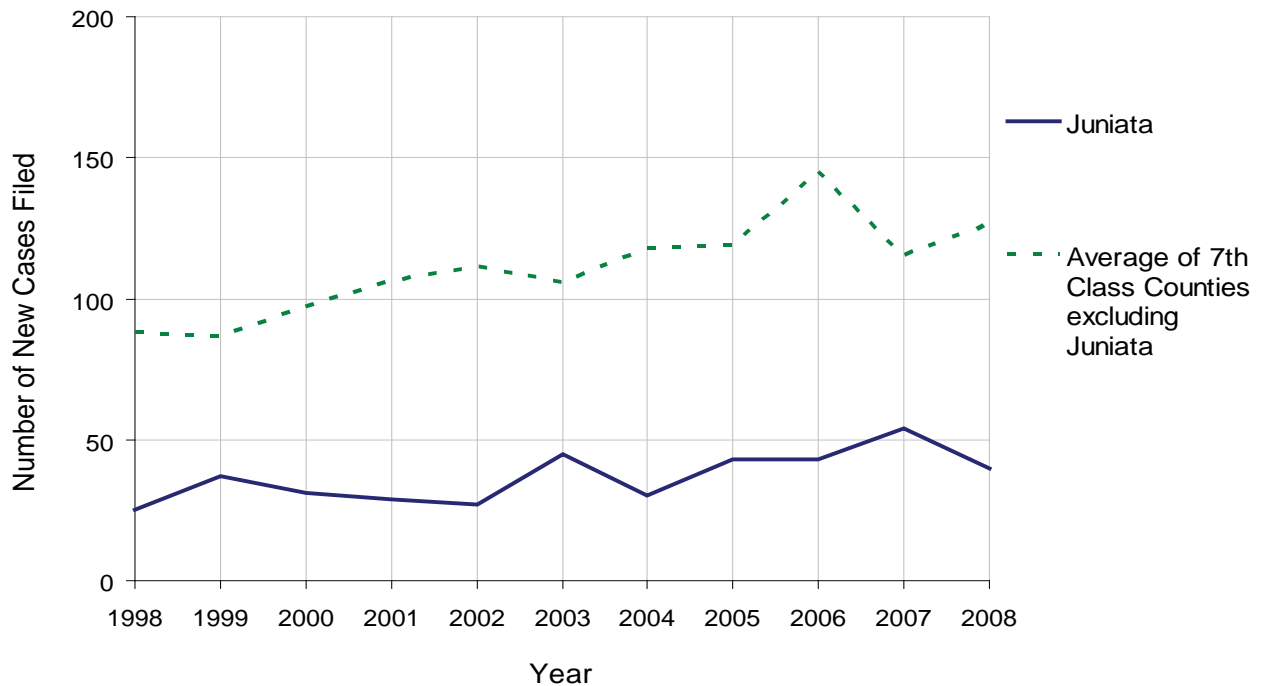
JUNIATA COUNTY

2008 Population Estimate: 23,146
 Class of County: 7th
 No. of Common Pleas Court Judgeships: 2
 (Juniata and Perry combined)



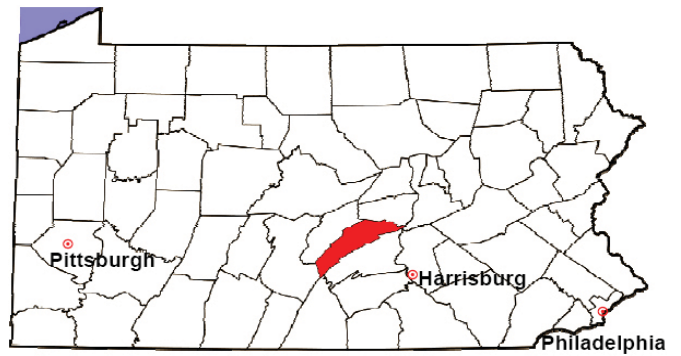
2008 Custody/Partial Custody/Visitation	No. of Petitions	%
Cases Pending 1/1/08	42	
New Cases Filed in '08	40	
Cases Available for Processing	82	
Processed By:		
Judge	20	95.2%
Non-Judicial Officer	0	0.0%
Other	1	4.8%
Cases Processed	21	100.0%
Cases Pending 12/31/08	61	

Custody/Partial Custody/Visitation New Cases Filed
 1998-2008



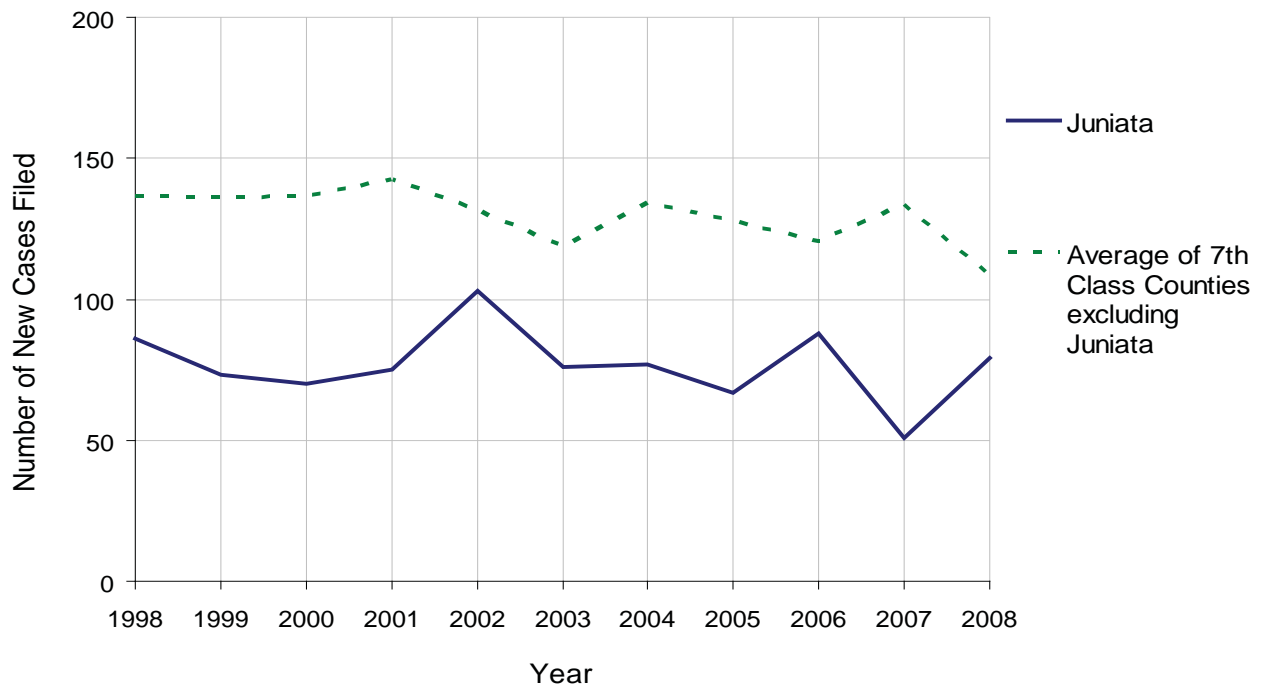
JUNIATA COUNTY

2008 Population Estimate: 23,146
 Class of County: 7th
 No. of Common Pleas Court Judgeships: 2
 (Juniata and Perry combined)



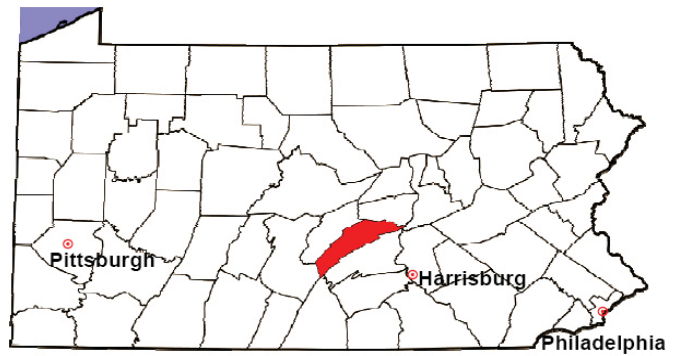
2008 Divorce	No. of Petitions	%
Cases Pending 1/1/08	53	
New Cases Filed in '08	79	
Cases Available for Processing	132	
Processed By:		
Contested Before a Judge	16	26.2%
Contested Before a Master	4	6.6%
Uncontested	41	67.2%
Other	0	0.0%
Cases Processed	61	100.0%
Cases Pending 12/31/08	71	

Divorce New Cases Filed, 1998-2008



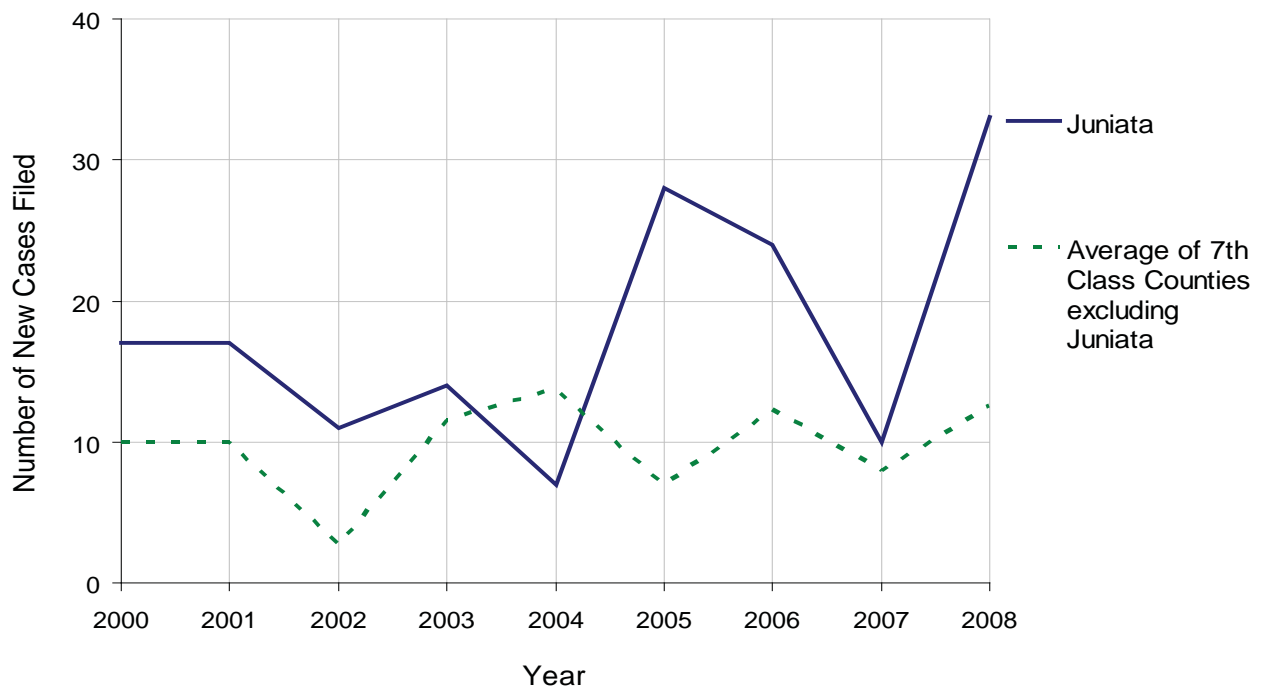
JUNIATA COUNTY

2008 Population Estimate: 23,146
 Class of County: 7th
 No. of Common Pleas Court Judgeships: 2
 (Juniata and Perry combined)



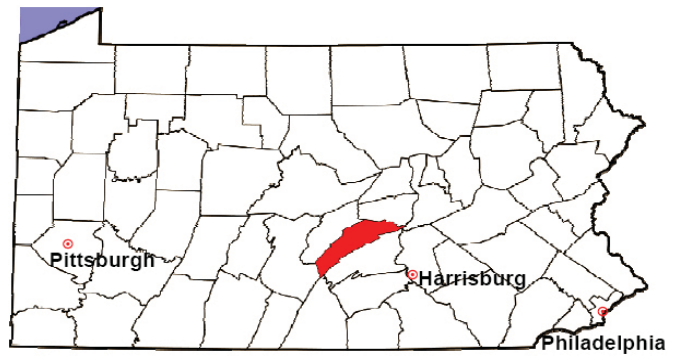
2008 Juvenile Dependency Abuse/Neglect	No. of Petitions	%
Cases Pending 1/1/08	39	
New Cases Filed in '08	33	
Cases Available for Processing	72	
Processed By:		
Judge	44	100.0%
Non-Judicial Officer	0	0.0%
Other	0	0.0%
Cases Processed	44	100.0%
Cases Pending 12/31/08	28	

Abuse/Neglect New Cases Filed, 2000-2008



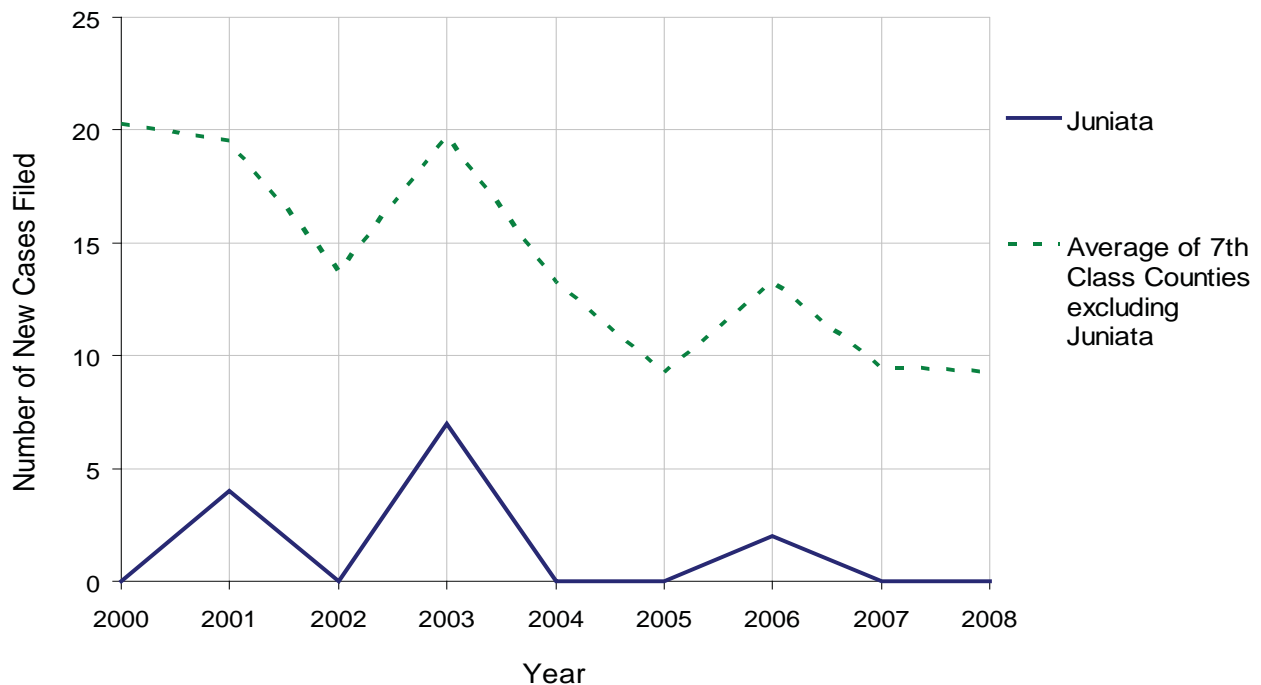
JUNIATA COUNTY

2008 Population Estimate: 23,146
 Class of County: 7th
 No. of Common Pleas Court Judgeships: 2
 (Juniata and Perry combined)



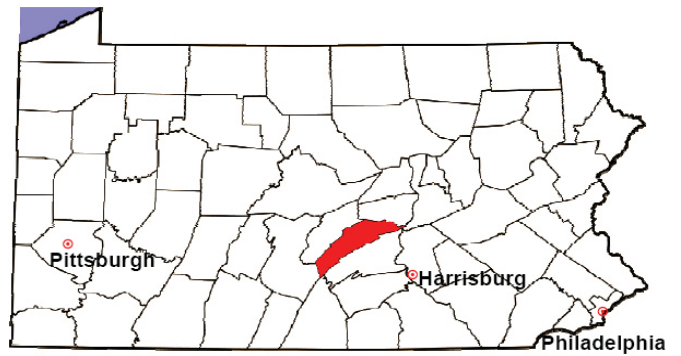
2008 Juvenile Dependency Status Offenses	No. of Petitions	%
Cases Pending 1/1/08	0	
New Cases Filed in '08	0	
Cases Available for Processing	0	
Processed By:		
Judge	0	
Non-Judicial Officer	0	
Other	0	
Cases Processed	0	
Cases Pending 12/31/08	0	

Status Offenses New Cases Filed, 2000-2008



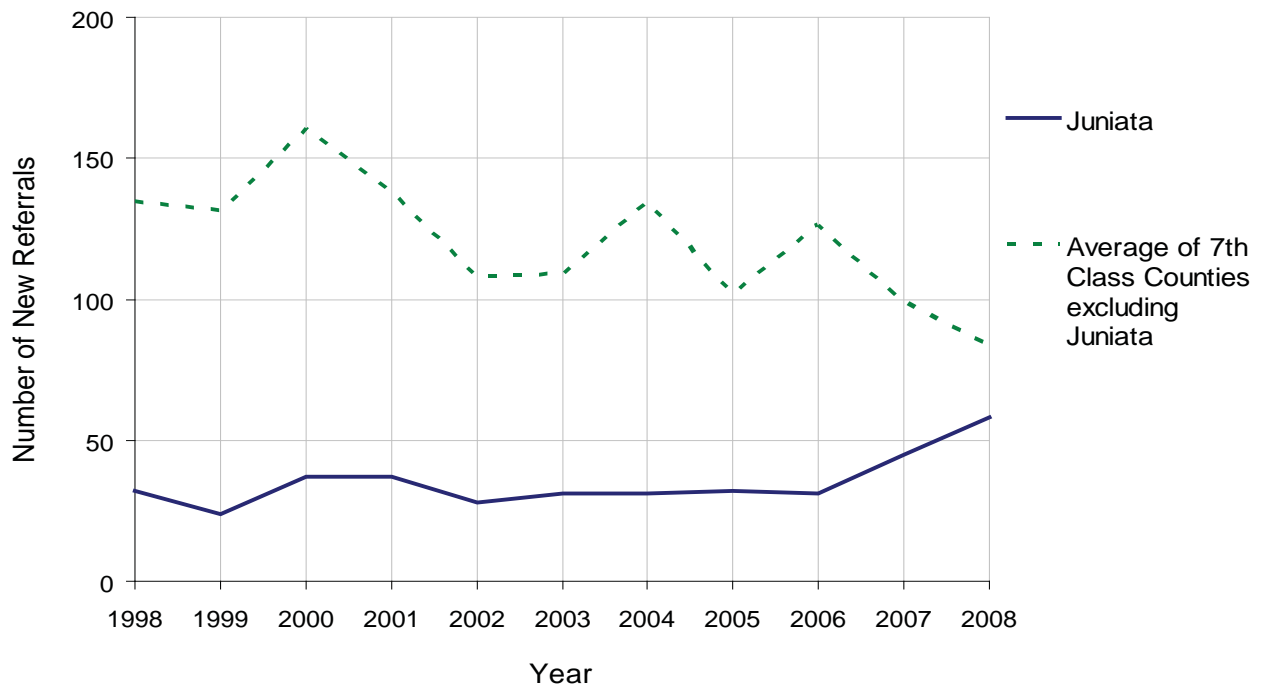
JUNIATA COUNTY

2008 Population Estimate: 23,146
 Class of County: 7th
 No. of Common Pleas Court Judgeships: 2
 (Juniata and Perry combined)



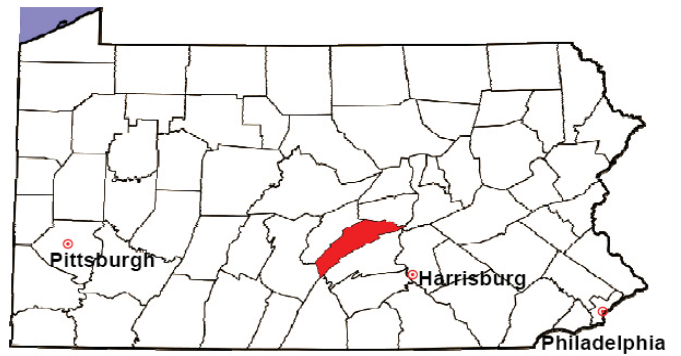
2008 Juvenile Delinquency	No. of Referrals	%
Cases Pending 1/1/08	9	
New Referrals in '08	58	
Cases Available for Processing	67	
Processed By:		
Judge	32	74.4%
Non-Judicial Officer	11	25.6%
Other	0	0.0%
Cases Processed	43	100.0%
Cases Pending 12/31/08	24	

Juvenile Delinquency New Referrals, 1998-2008



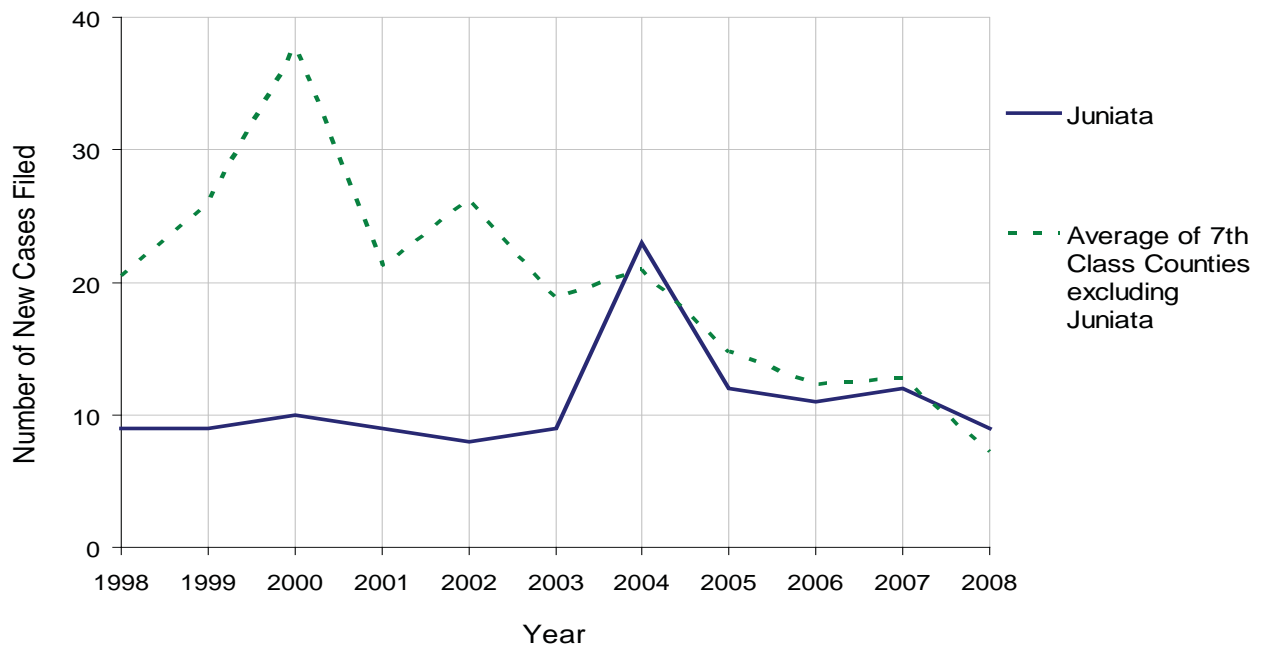
JUNIATA COUNTY

2008 Population Estimate: 23,146
 Class of County: 7th
 No. of Common Pleas Court Judgeships: 2
 (Juniata and Perry combined)



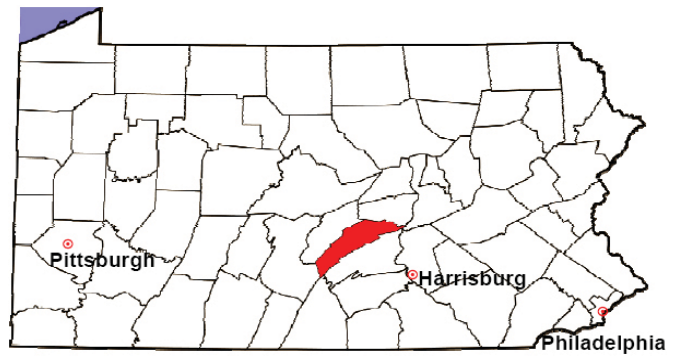
2008 Accounts	No. of Accounts	%
Cases Pending 1/1/08	4	
New Cases Filed in '08	9	
Cases Available for Processing	13	
Processed By:		
Contested before a Judge	0	0.0%
Contested before a Non-Judicial Officer	0	0.0%
Uncontested	6	100.0%
Other	0	0.0%
Cases Processed	6	100.0%
Cases Pending 12/31/08	7	

Accounts New Cases Filed, 1998-2008



JUNIATA COUNTY

2008 Population Estimate: 23,146
 Class of County: 7th
 No. of Common Pleas Court Judgeships: 2
 (Juniata and Perry combined)

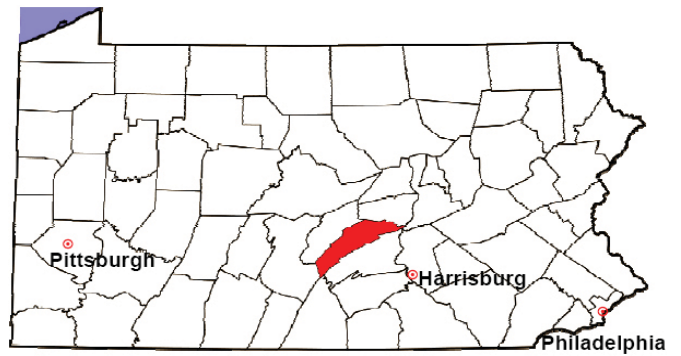


2008 Adoptions		No. of Cases	%
Cases Pending 1/1/08		1	
New Cases Filed in '08		8	
Cases Available for Processing		9	
Processed By:			
Contested before a Judge	Granted	0	0.0%
	Denied	0	0.0%
Uncontested	Granted	8	100.0%
	Denied	0	0.0%
Other		0	0.0%
Cases Processed		8	100.0%
Cases Pending 12/31/08		1	

Note: Prior to 2008, each petition was counted as one new case, regardless of the number of children listed on the petition. Starting in 2008, each child listed on a petition is counted as a separate case. Therefore, statistics for 2008 should not be compared with those for previous years.

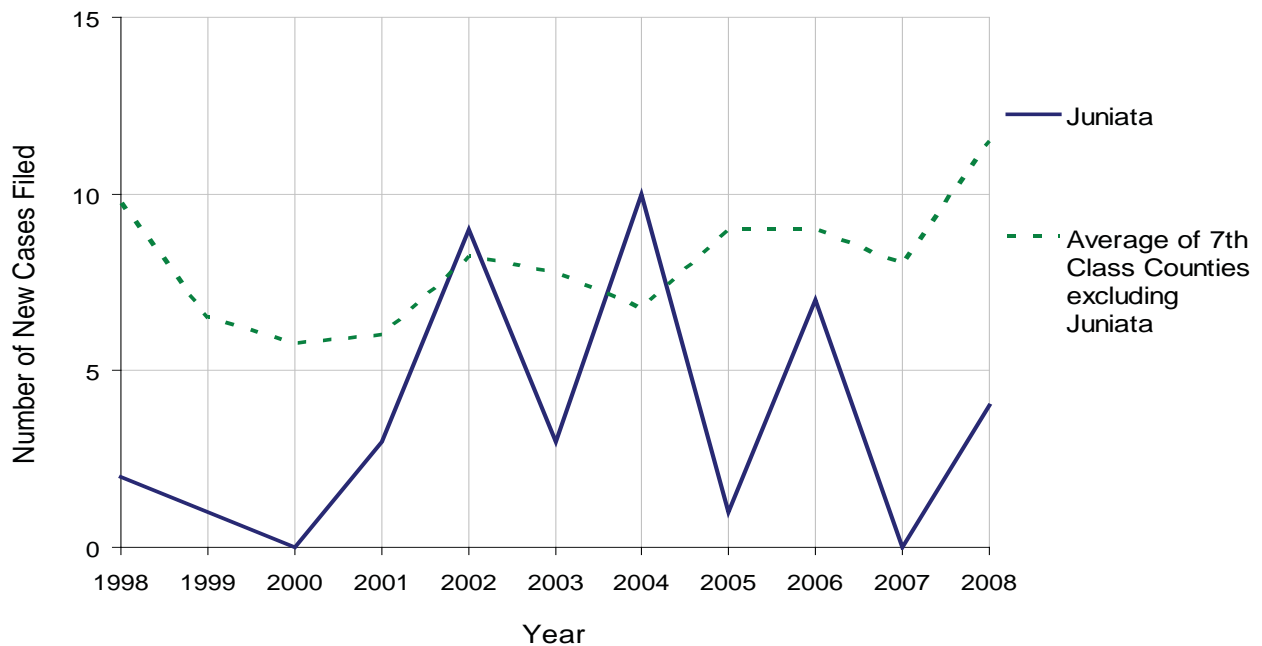
JUNIATA COUNTY

2008 Population Estimate: 23,146
 Class of County: 7th
 No. of Common Pleas Court Judgeships: 2
 (Juniata and Perry combined)



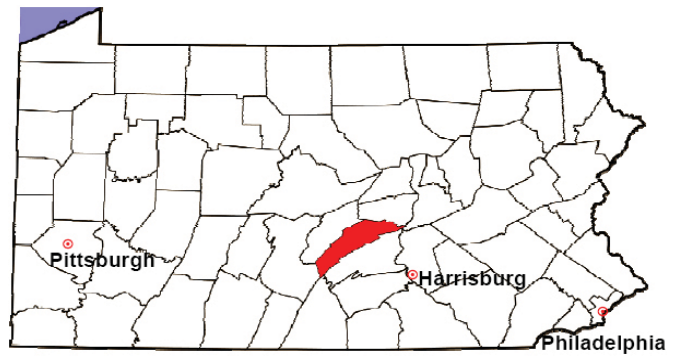
2008 Relinquishments/Terminations	No. of Petitions	%
Cases Pending 1/1/08	4	
New Cases Filed in '08	4	
Cases Available for Processing	8	
Processed By:		
Contested before a Judge	0	0.0%
Uncontested	4	100.0%
Other	0	0.0%
Cases Processed	4	100.0%
Cases Pending 12/31/08	4	

Relinquishments/Terminations New Cases Filed, 1998-2008



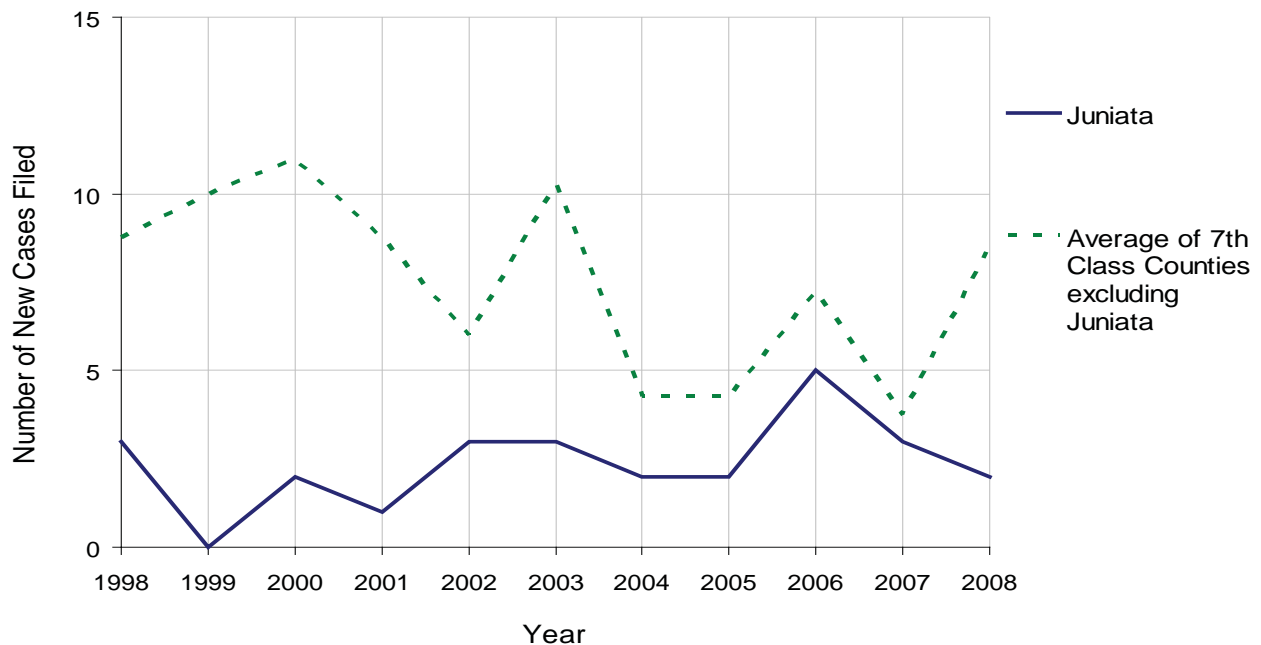
JUNIATA COUNTY

2008 Population Estimate: 23,146
 Class of County: 7th
 No. of Common Pleas Court Judgeships: 2
 (Juniata and Perry combined)



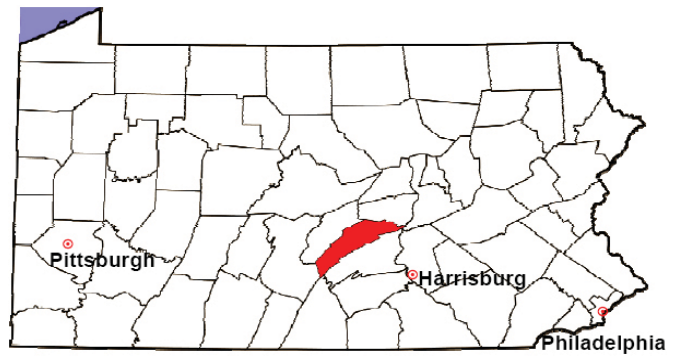
2008 Appointment of Guardians	No. of Petitions	%
Cases Pending 1/1/08	2	
New Cases Filed in '08	2	
Cases Available for Processing	4	
Processed By:		
Contested before a Judge	0	0.0%
Uncontested	2	100.0%
Other	0	0.0%
Cases Processed	2	100.0%
Cases Pending 12/31/08	2	

Appointment of Guardians New Cases Filed, 1998-2008



JUNIATA COUNTY

2008 Population Estimate: 23,146
 Class of County: 7th
 No. of Common Pleas Court Judgeships: 2
 (Juniata and Perry combined)



2008 Jury Activity & Performance Measures

A. Juror Days	300
B. Number Sent to Voir Dire	270
Voir Dire Attendance Rate $(B/A * 100)$	90.0%
C. Number of Voir Dires Started	8
Juror Days Per Voir Dire Starts (A/C)	38
D. Number of Jurors Selected	140
Juror Selection Rate $(D/B * 100)$	51.9%
E. Number of Jury Trials Started	2
Juror Days Per Trial Starts (A/E)	150
Number of Voir Dires Not Resulting in Trial $(C-E)$	6
Percent Voir Dires Not Resulting in Trial $(C-E)/C * 100$	75.0%
F. Pool Days	5
G. Zero Panel Days	0
Percent Zero Panel Days $(G/F * 100)$	0.0%
H. Total Juror Fees Incurred	\$4,688
Average Juror Fees Per Trial (H/E)	\$2,344

Average Juror Fees Per Trial, 1998-2008

