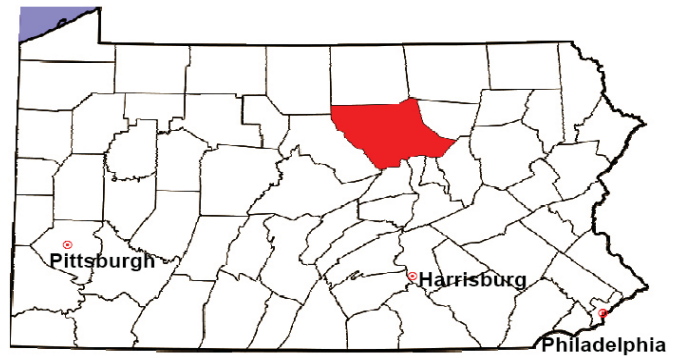


LYCOMING COUNTY

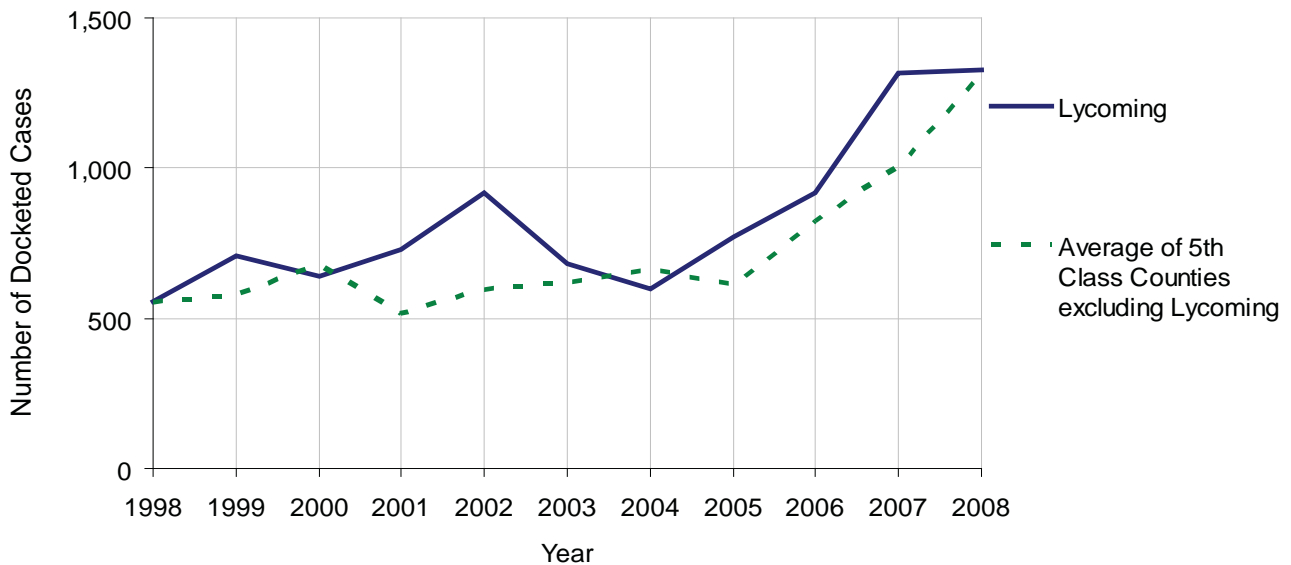
2008 Population Estimate: 116,670
 Class of County: 5th
 No. of Common Pleas Court Judgeships: 5



2008 Civil	Civil Action		
Docketed Cases	1,326		
Arbitrated Cases	36		
Trial-Ready Cases:	Civil Action	Other	Total
Cases Pending 1/1/08	158	27	185
Became Trial Ready in '08	151	48	199
Restored to Trial List	3	0	3
Appeals from Arbitration	5	0	5
Cases Available for Trial	317	75	392
Disposed By:			
Settlement	117	27	144
Non-Jury Trial	17	2	19
Jury Trial	12	0	12
Stricken from Trial List	1	0	1
Other	54	31	85
Cases Disposed	201	60	261
Cases Pending 12/31/08	116	15	131

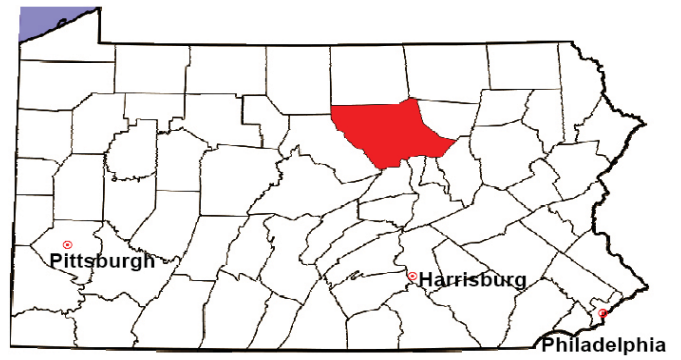
Age of Trial-Ready Cases as of 12/31/08 (Civil Action Only)		
0-6 months	88	76%
7-12 months	10	9%
13-18 months	7	6%
19-24 months	6	5%
25-30 months	3	3%
31-36 months	0	0%
Over 36 months	2	2%
Total	116	100%

Docketed Cases, 1998-2008



LYCOMING COUNTY

2008 Population Estimate: 116,670
 Class of County: 5th
 No. of Common Pleas Court Judgeships: 5



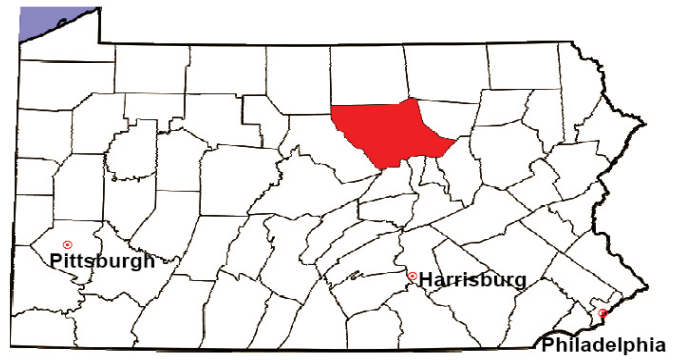
2008 Protection From Abuse	No. of Petitions	%
Cases Pending 1/1/08	14	
New Cases Filed in '08	278	
Cases Available for Processing	292	
Processed By:		
Final Order After Hearing	38	13.7%
Final Order by Stipulation or Agreement	129	46.4%
Dismissal	26	9.4%
Withdrawal	73	26.3%
Other	12	4.3%
Cases Processed	278	100.0%
Cases Pending 12/31/08	14	

PFA New Cases Filed, 1999-2008



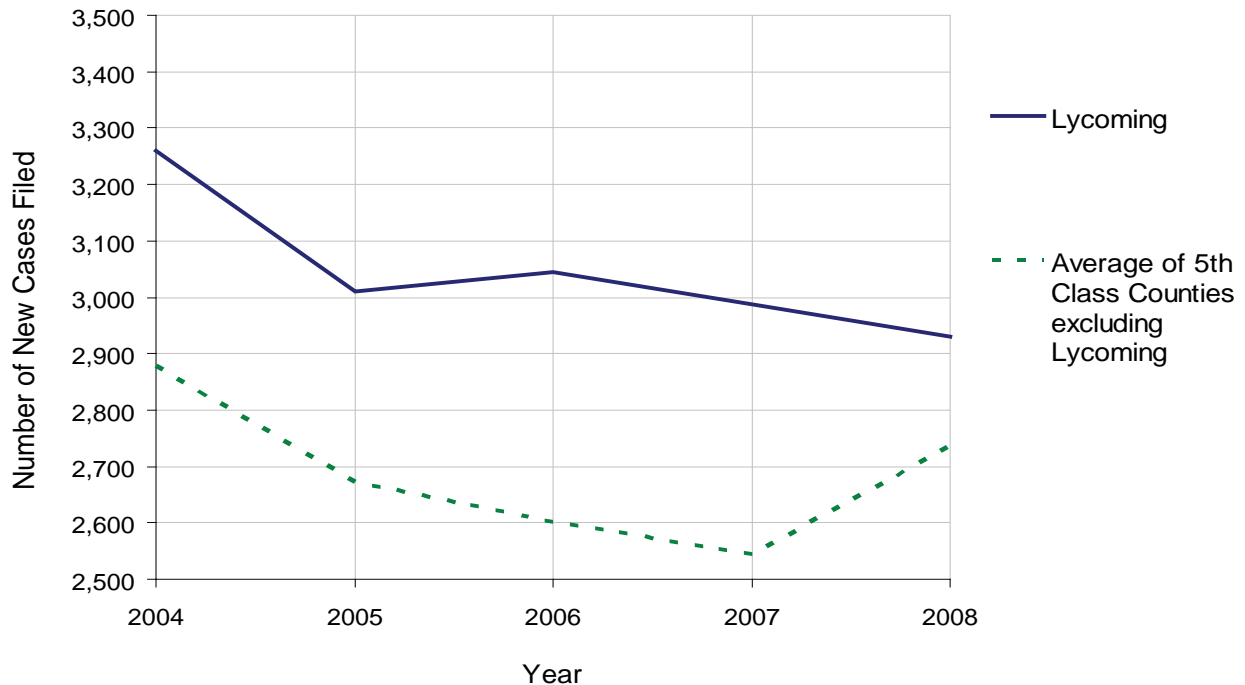
LYCOMING COUNTY

2008 Population Estimate: 116,670
 Class of County: 5th
 No. of Common Pleas Court Judgeships: 5



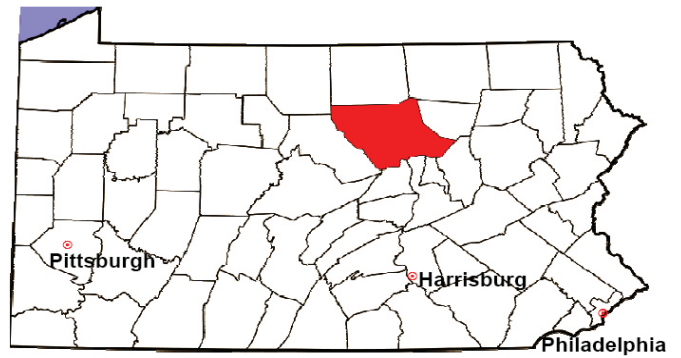
2008 Spousal & Child Support	No. of Petitions	%
Cases Pending 1/1/08	253	
New Cases Filed in '08	2,930	
Dockets Transferred In (+)	23	
Dockets Transferred Out (-)	34	
Cases Available for Processing	3,172	
Processed By:		
Judge	52	1.8%
Intake Officer	2,521	85.5%
Hearing Officer	374	12.7%
Other	0	0.0%
Cases Processed	2,947	100.0%
Cases Pending 12/31/08	225	

Spousal & Child Support New Cases Filed, 1998-2008



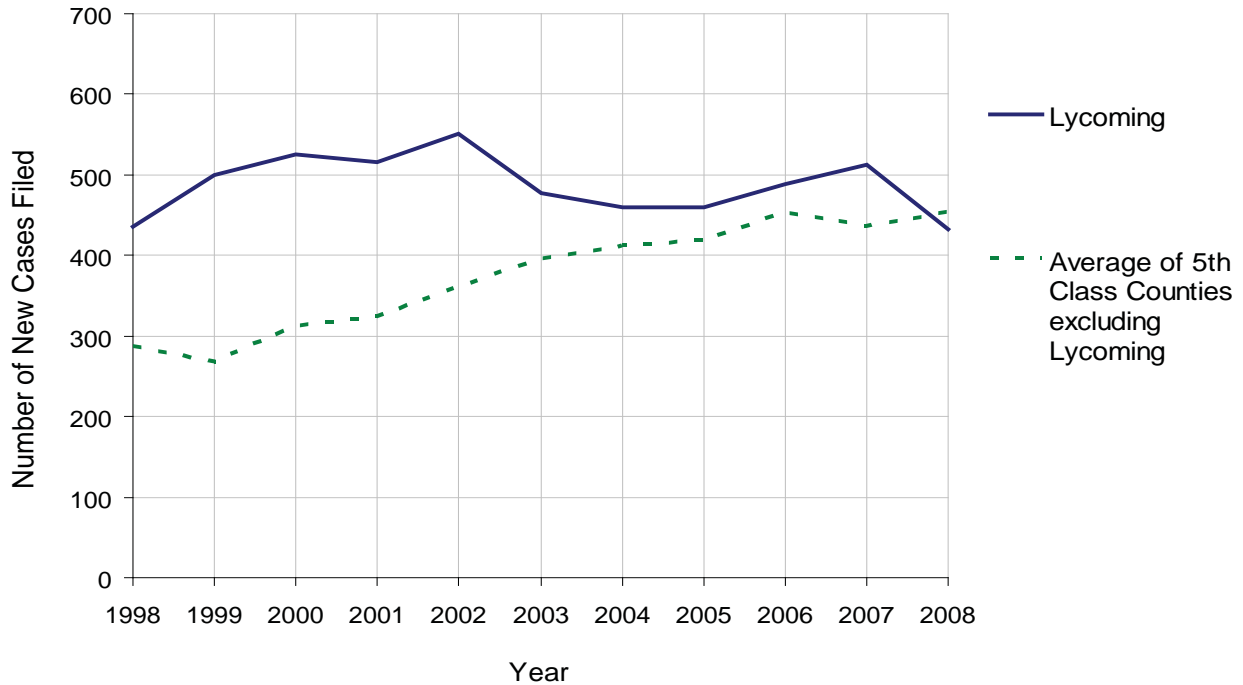
LYCOMING COUNTY

2008 Population Estimate: 116,670
 Class of County: 5th
 No. of Common Pleas Court Judgeships: 5



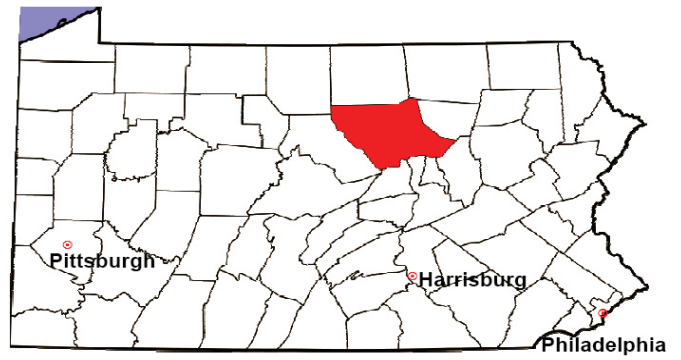
2008 Custody/Partial Custody/Visitation	No. of Petitions	%
Cases Pending 1/1/08	63	
New Cases Filed in '08	432	
Cases Available for Processing	495	
Processed By:		
Judge	61	14.9%
Non-Judicial Officer	248	60.5%
Other	101	24.6%
Cases Processed	410	100.0%
Cases Pending 12/31/08	85	

Custody/Partial Custody/Visitation New Cases Filed
 1998-2008



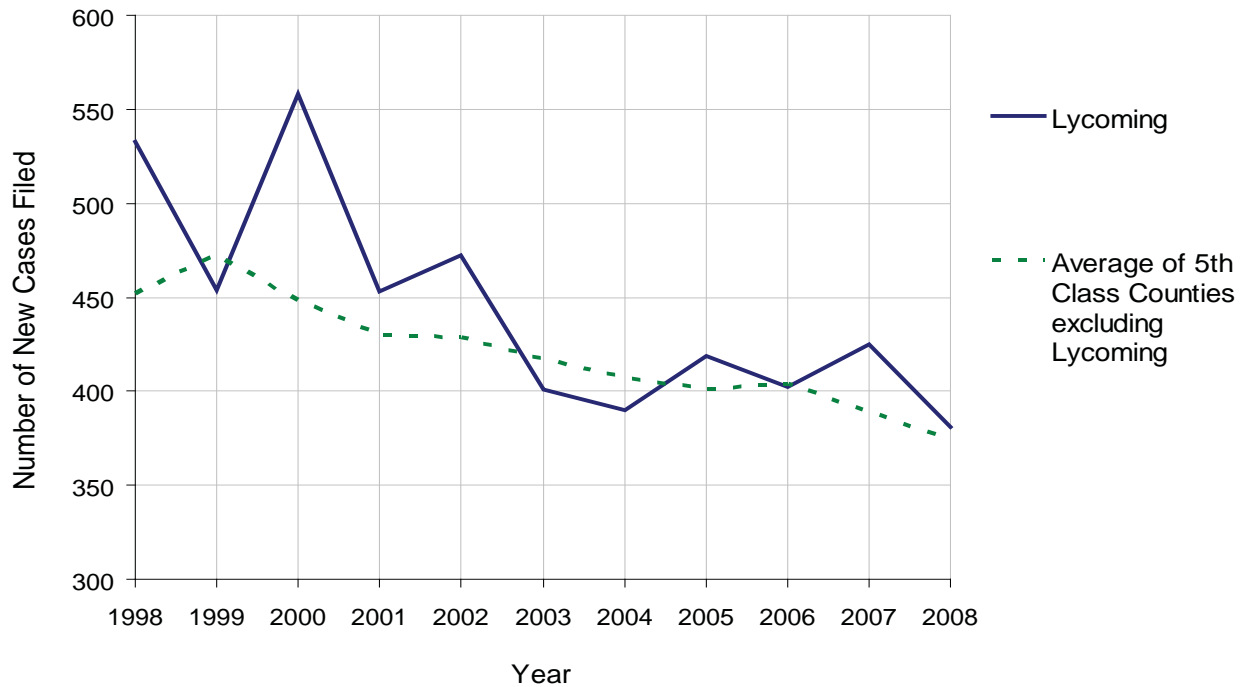
LYCOMING COUNTY

2008 Population Estimate: 116,670
 Class of County: 5th
 No. of Common Pleas Court Judgeships: 5



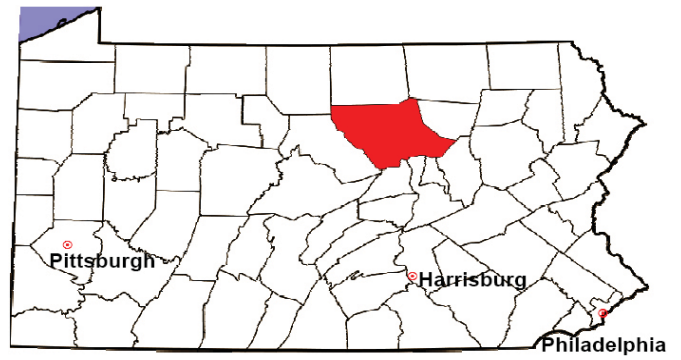
2008 Divorce	No. of Petitions	%
Cases Pending 1/1/08	1,239	
New Cases Filed in '08	381	
Cases Available for Processing	1,620	
Processed By:		
Contested Before a Judge	16	5.5%
Contested Before a Master	0	0.0%
Uncontested	273	94.5%
Other	0	0.0%
Cases Processed	289	100.0%
Cases Pending 12/31/08	1,331	

Divorce New Cases Filed, 1998-2008



LYCOMING COUNTY

2008 Population Estimate: 116,670
 Class of County: 5th
 No. of Common Pleas Court Judgeships: 5



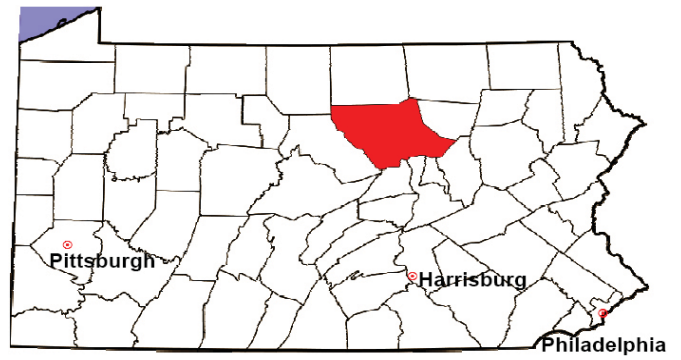
2008 Juvenile Dependency Abuse/Neglect	No. of Petitions	%
Cases Pending 1/1/08	0	
New Cases Filed in '08	43	
Cases Available for Processing	43	
Processed By:		
Judge	38	88.4%
Non-Judicial Officer	5	11.6%
Other	0	0.0%
Cases Processed	43	100.0%
Cases Pending 12/31/08	0	

Abuse/Neglect New Cases Filed, 2000-2008



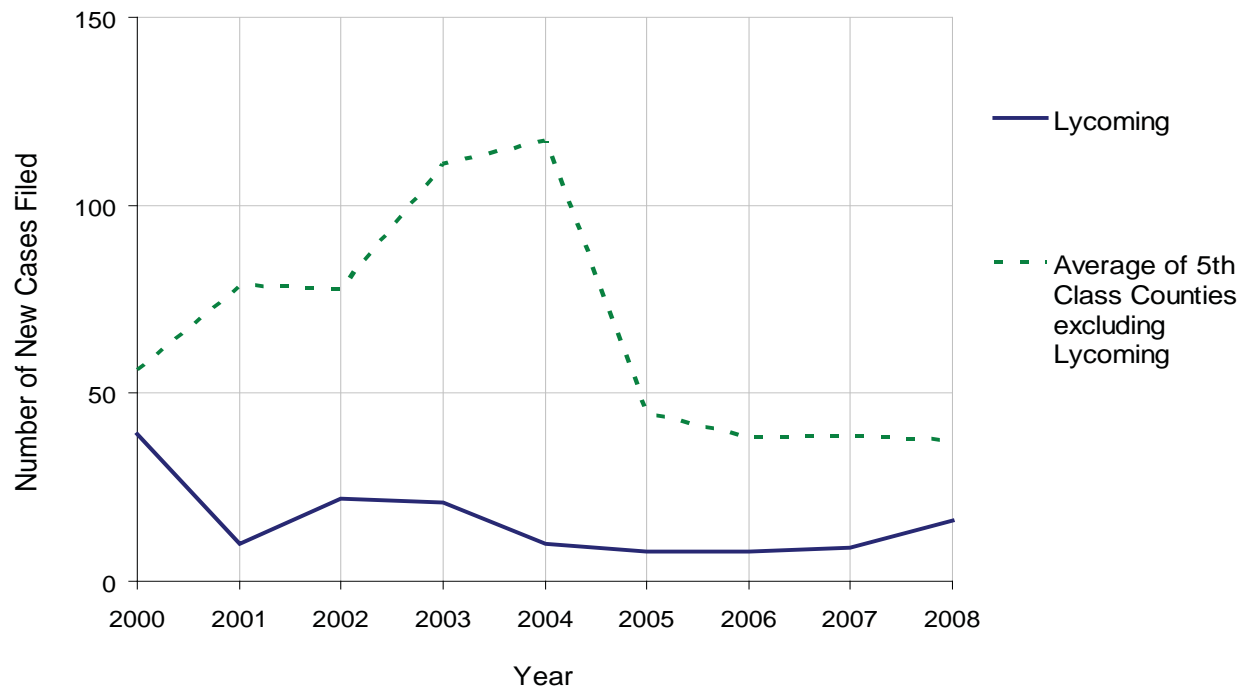
LYCOMING COUNTY

2008 Population Estimate: 116,670
 Class of County: 5th
 No. of Common Pleas Court Judgeships: 5



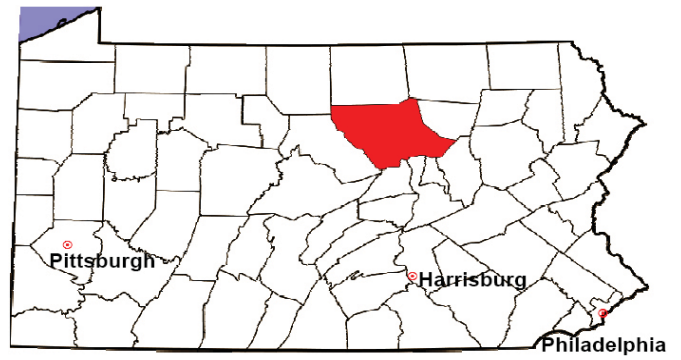
2008 Juvenile Dependency Status Offenses	No. of Petitions	%
Cases Pending 1/1/08	0	
New Cases Filed in '08	16	
Cases Available for Processing	16	
Processed By:		
Judge	13	81.3%
Non-Judicial Officer	3	18.8%
Other	0	0.0%
Cases Processed	16	100.0%
Cases Pending 12/31/08	0	

Status Offenses New Cases Filed, 2000-2008



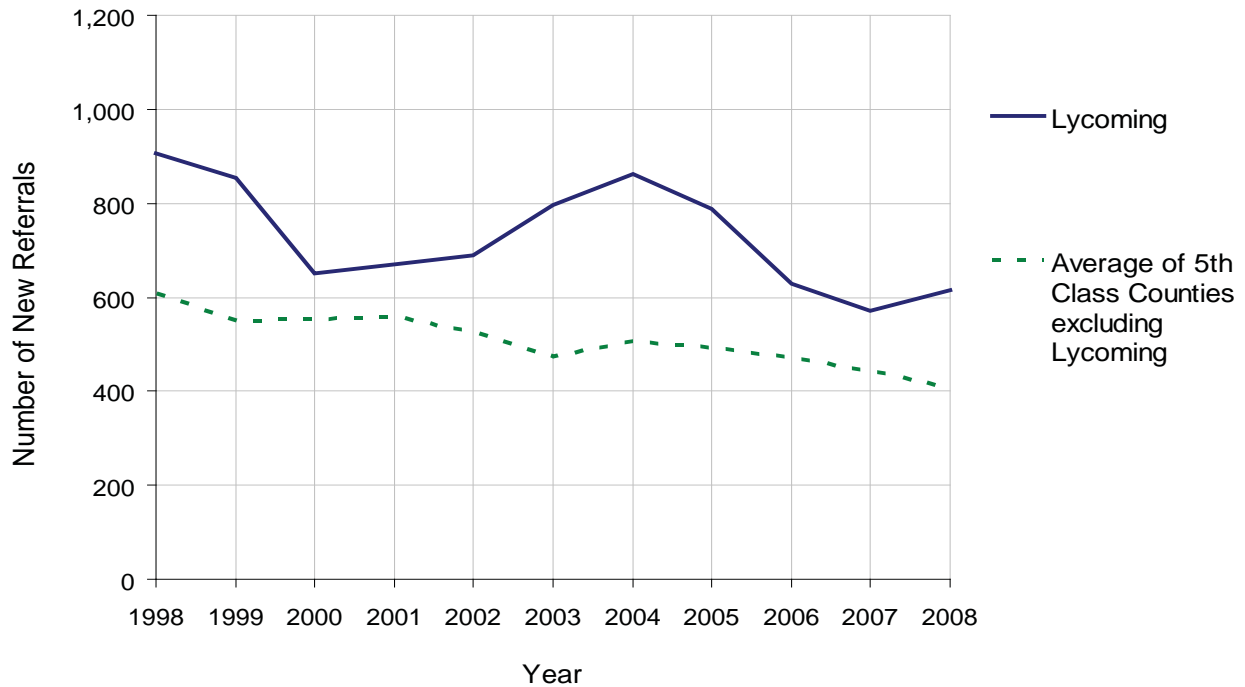
LYCOMING COUNTY

2008 Population Estimate: 116,670
 Class of County: 5th
 No. of Common Pleas Court Judgeships: 5



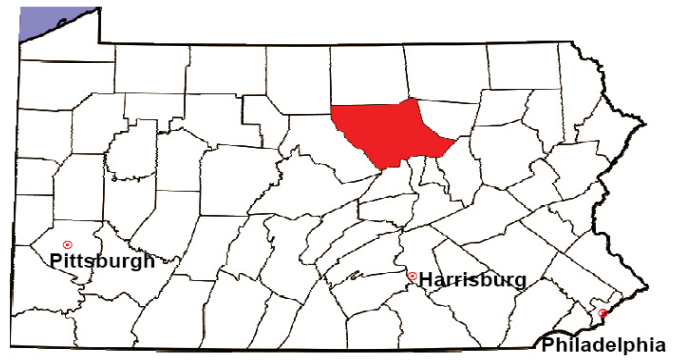
2008 Juvenile Delinquency	No. of Referrals	%
Cases Pending 1/1/08	125	
New Referrals in '08	616	
Cases Available for Processing	741	
Processed By:		
Judge	383	59.7%
Non-Judicial Officer	259	40.3%
Other	0	0.0%
Cases Processed	642	100.0%
Cases Pending 12/31/08	99	

Juvenile Delinquency New Referrals, 1998-2008



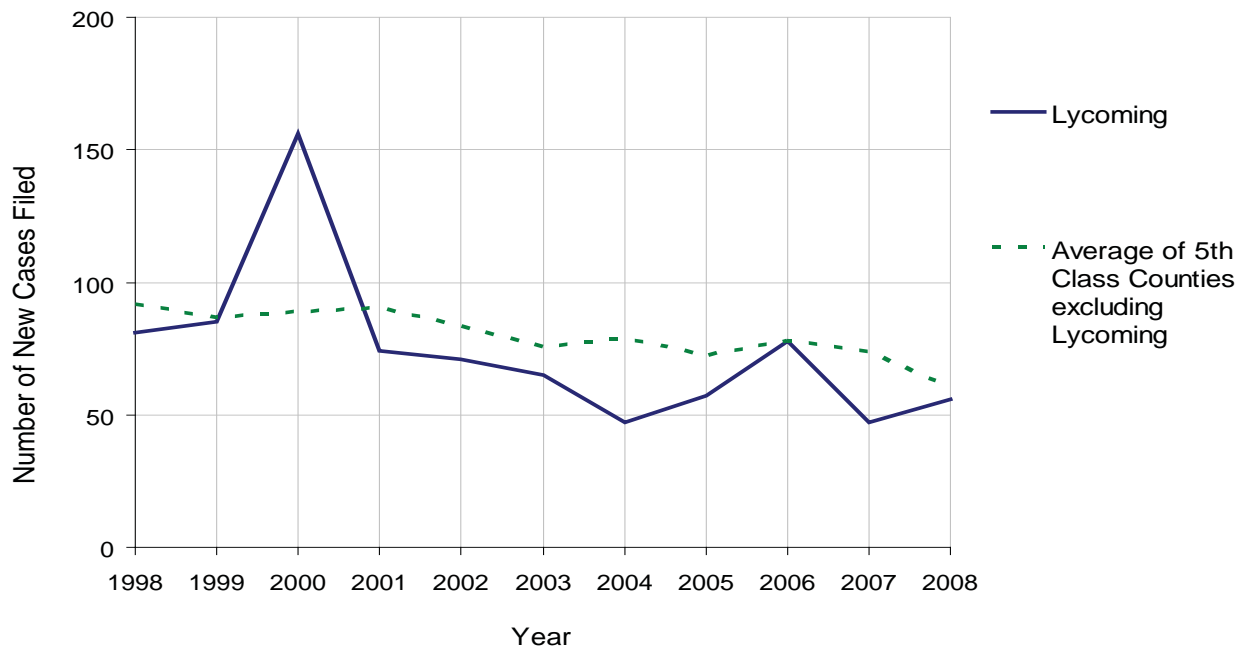
LYCOMING COUNTY

2008 Population Estimate: 116,670
 Class of County: 5th
 No. of Common Pleas Court Judgeships: 5



2008 Accounts	No. of Accounts	%
Cases Pending 1/1/08	2	
New Cases Filed in '08	56	
Cases Available for Processing	58	
Processed By:		
Contested before a Judge	2	3.8%
Contested before a Non-Judicial Officer	0	0.0%
Uncontested	51	96.2%
Other	0	0.0%
Cases Processed	53	100.0%
Cases Pending 12/31/08	5	

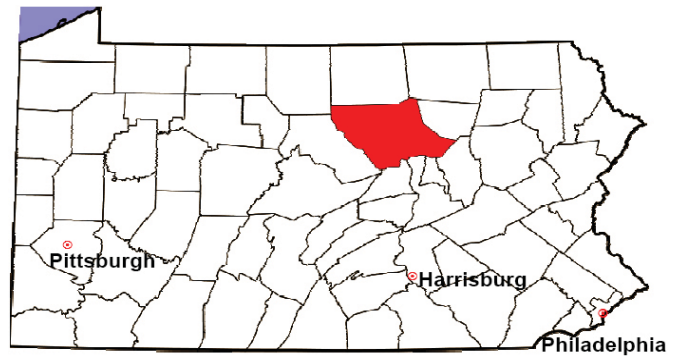
Accounts New Cases Filed, 1998-2008



Note: A sharp increase or decrease may reflect changes in practice or counting methods.

LYCOMING COUNTY

2008 Population Estimate: 116,670
 Class of County: 5th
 No. of Common Pleas Court Judgeships: 5

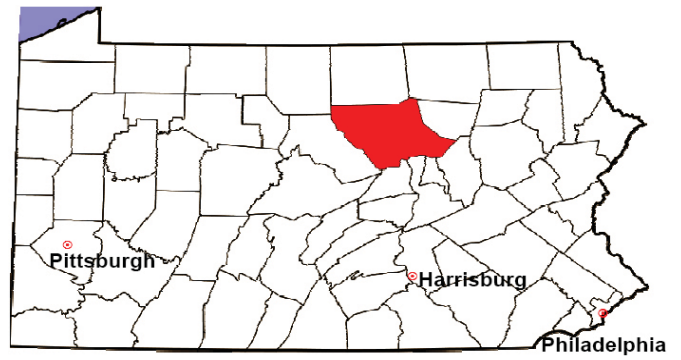


2008 Adoptions		No. of Cases	%
Cases Pending 1/1/08		11	
New Cases Filed in '08		60	
Cases Available for Processing		71	
Processed By:			
Contested before a Judge	Granted	0	0.0%
	Denied	0	0.0%
Uncontested	Granted	52	100.0%
	Denied	0	0.0%
Other		0	0.0%
Cases Processed		52	100.0%
Cases Pending 12/31/08		19	

Note: Prior to 2008, each petition was counted as one new case, regardless of the number of children listed on the petition. Starting in 2008, each child listed on a petition is counted as a separate case. Therefore, statistics for 2008 should not be compared with those for previous years.

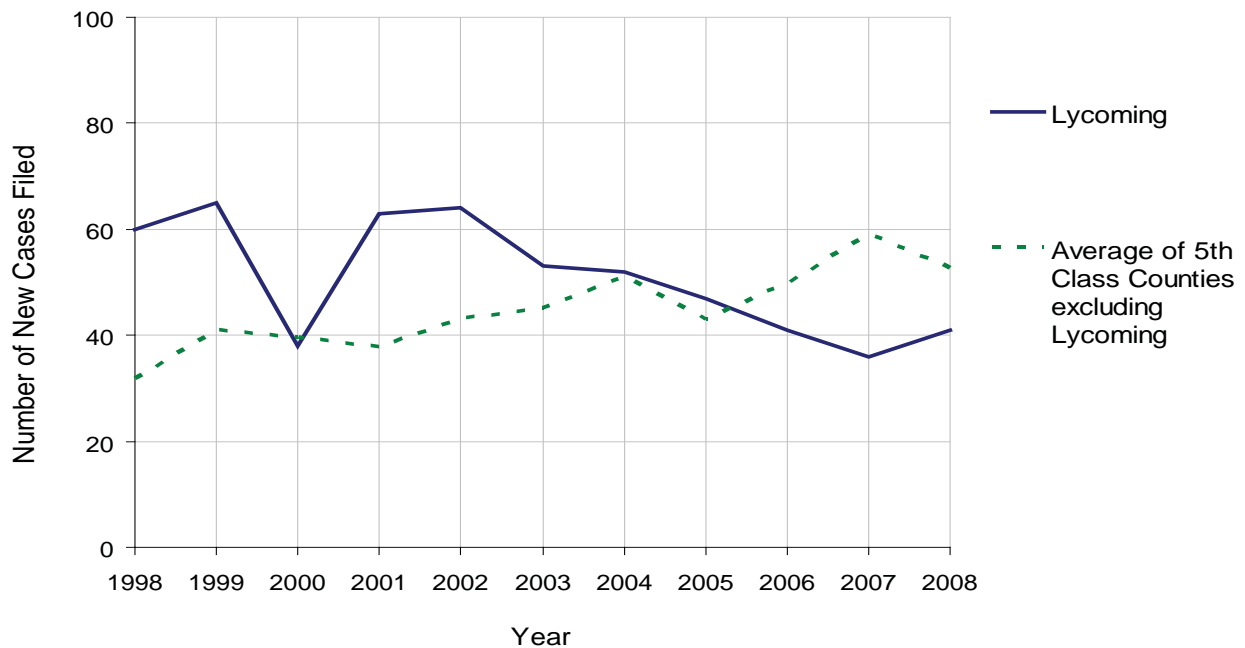
LYCOMING COUNTY

2008 Population Estimate: 116,670
 Class of County: 5th
 No. of Common Pleas Court Judgeships: 5



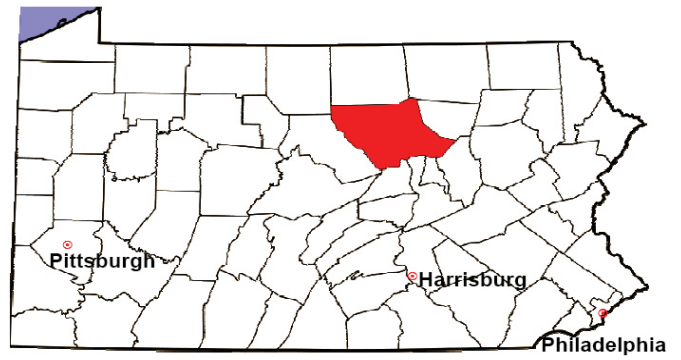
2008 Relinquishments/Terminations	No. of Petitions	%
Cases Pending 1/1/08	65	
New Cases Filed in '08	41	
Cases Available for Processing	106	
Processed By:		
Contested before a Judge	0	0.0%
Uncontested	32	100.0%
Other	0	0.0%
Cases Processed	32	100.0%
Cases Pending 12/31/08	74	

Relinquishments/Terminations New Cases Filed, 1998-2008



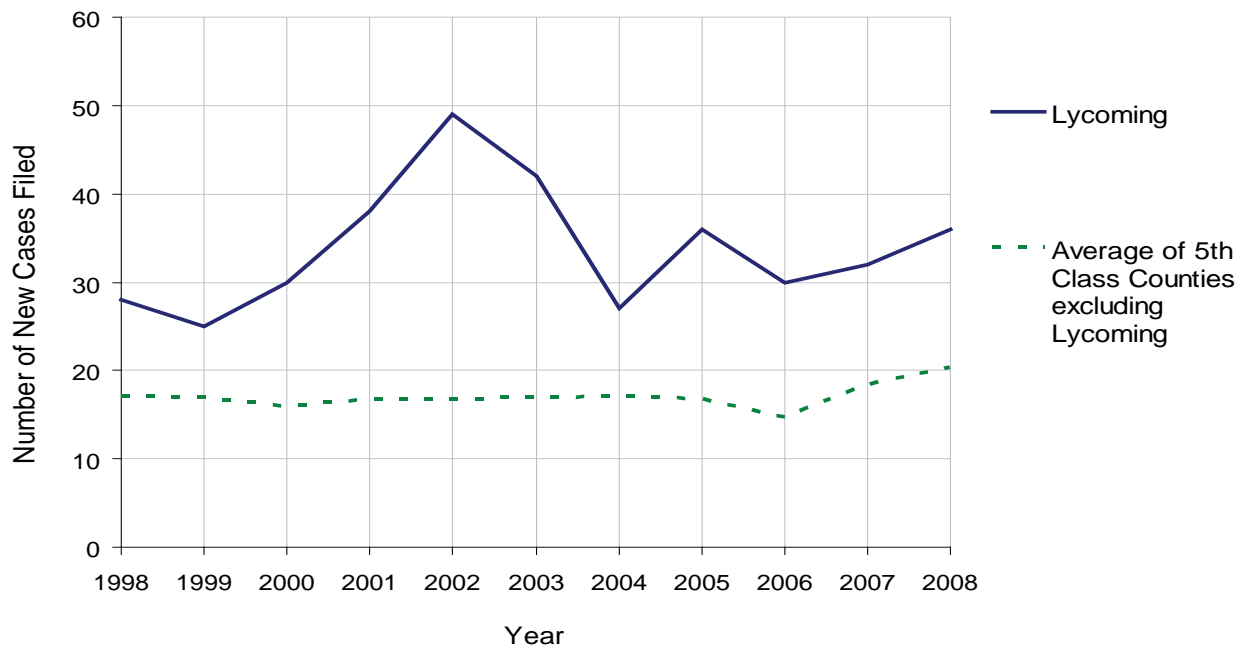
LYCOMING COUNTY

2008 Population Estimate: 116,670
 Class of County: 5th
 No. of Common Pleas Court Judgeships: 5



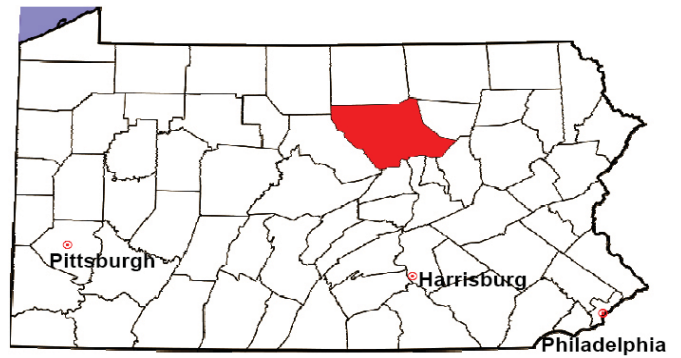
2008 Appointment of Guardians	No. of Petitions	%
Cases Pending 1/1/08	6	
New Cases Filed in '08	36	
Cases Available for Processing	42	
Processed By:		
Contested before a Judge	0	0.0%
Uncontested	40	100.0%
Other	0	0.0%
Cases Processed	40	100.0%
Cases Pending 12/31/08	2	

Appointment of Guardians New Cases Filed, 1998-2008



LYCOMING COUNTY

2008 Population Estimate: 116,670
 Class of County: 5th
 No. of Common Pleas Court Judgeships: 5



2008 Jury Activity & Performance Measures		
A. Juror Days		3,296
B. Number Sent to Voir Dire		3,824
	Voir Dire Attendance Rate $(B/A * 100)$	116.0%
C. Number of Voir Dires Started		88
	Juror Days Per Voir Dire Starts (A/C)	37
D. Number of Jurors Selected		1,209
	Juror Selection Rate $(D/B * 100)$	31.6%
E. Number of Jury Trials Started		54
	Juror Days Per Trial Starts (A/E)	61
	Number of Voir Dires Not Resulting in Trial $(C-E)$	34
	Percent Voir Dires Not Resulting in Trial $(C-E)/C * 100$	38.6%
F. Pool Days		21
G. Zero Panel Days		0
	Percent Zero Panel Days $(G/F * 100)$	0.0%
H. Total Juror Fees Incurred		\$71,648
	Average Juror Fees Per Trial (H/E)	\$1,327

Average Juror Fees Per Trial, 1998-2008

