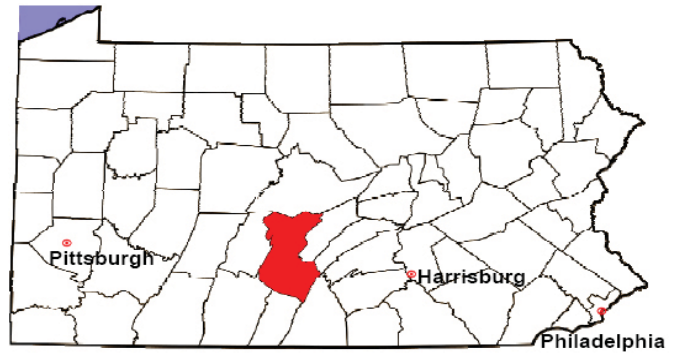


HUNTINGDON COUNTY

2008 Population Estimate: 45,543

Class of County: 6th

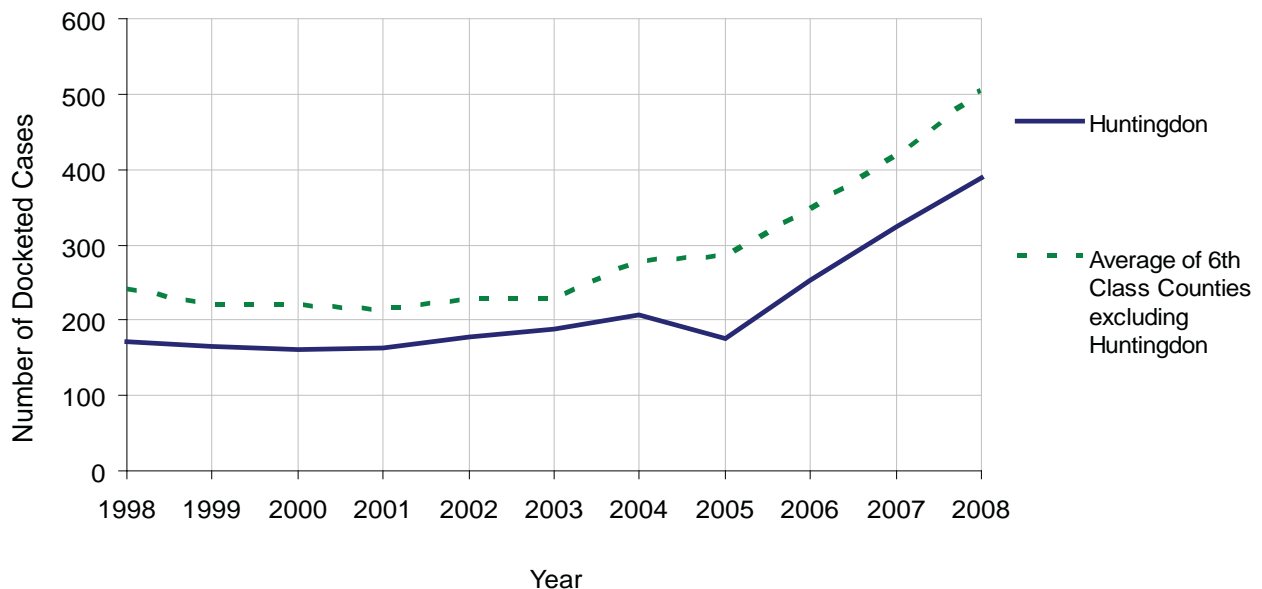
No. of Common Pleas Court Judgeships: 1



2008 Civil		Civil Action		
Docketed Cases		388		
Arbitrated Cases		7		
Trial-Ready Cases:		Civil Action	Other	Total
Cases Pending 1/1/08		11	0	11
Became Trial Ready in '08		19	1	20
Restored to Trial List		0	0	0
Appeals from Arbitration		0	0	0
Cases Available for Trial		30	1	31
Disposed By:				
Settlement		8	0	8
Non-Jury Trial		2	0	2
Jury Trial		2	0	2
Stricken from Trial List		3	1	4
Other		0	0	0
Cases Disposed		15	1	16
Cases Pending 12/31/08		15	0	15

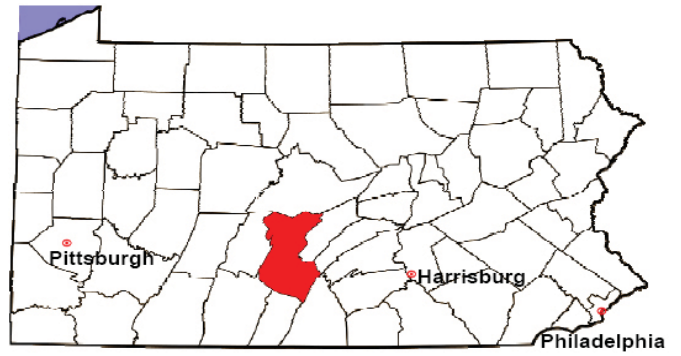
Age of Trial-Ready Cases as of 12/31/08 (Civil Action Only)		
0-6 months	11	73%
7-12 months	4	27%
13-18 months	0	0%
19-24 months	0	0%
25-30 months	0	0%
31-36 months	0	0%
Over 36 months	0	0%
Total	15	100%

Docketed Cases, 1998-2008



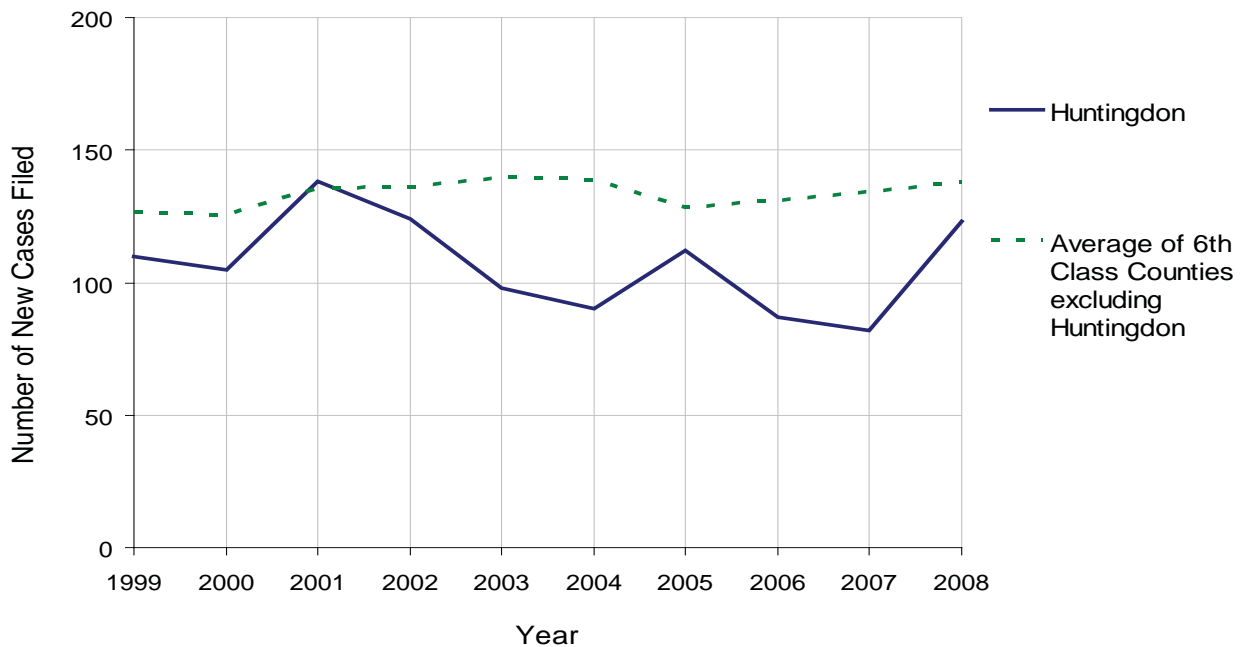
HUNTINGDON COUNTY

2008 Population Estimate: 45,543
 Class of County: 6th
 No. of Common Pleas Court Judgeships: 1



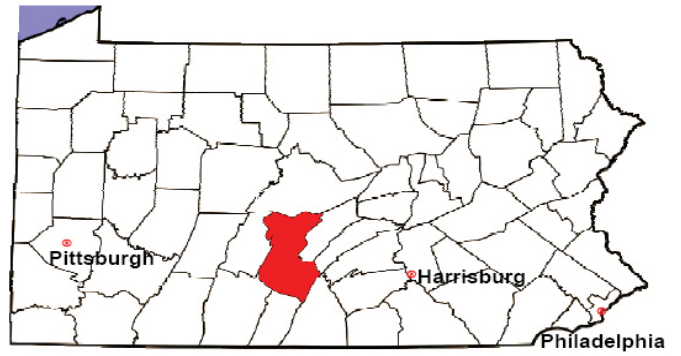
2008 Protection From Abuse	No. of Petitions	%
Cases Pending 1/1/08	21	
New Cases Filed in '08	123	
Cases Available for Processing	144	
Processed By:		
Final Order After Hearing	12	9.0%
Final Order by Stipulation or Agreement	51	38.1%
Dismissal	61	45.5%
Withdrawal	2	1.5%
Other	8	6.0%
Cases Processed	134	100.0%
Cases Pending 12/31/08	10	

PFA New Cases Filed, 1999-2008



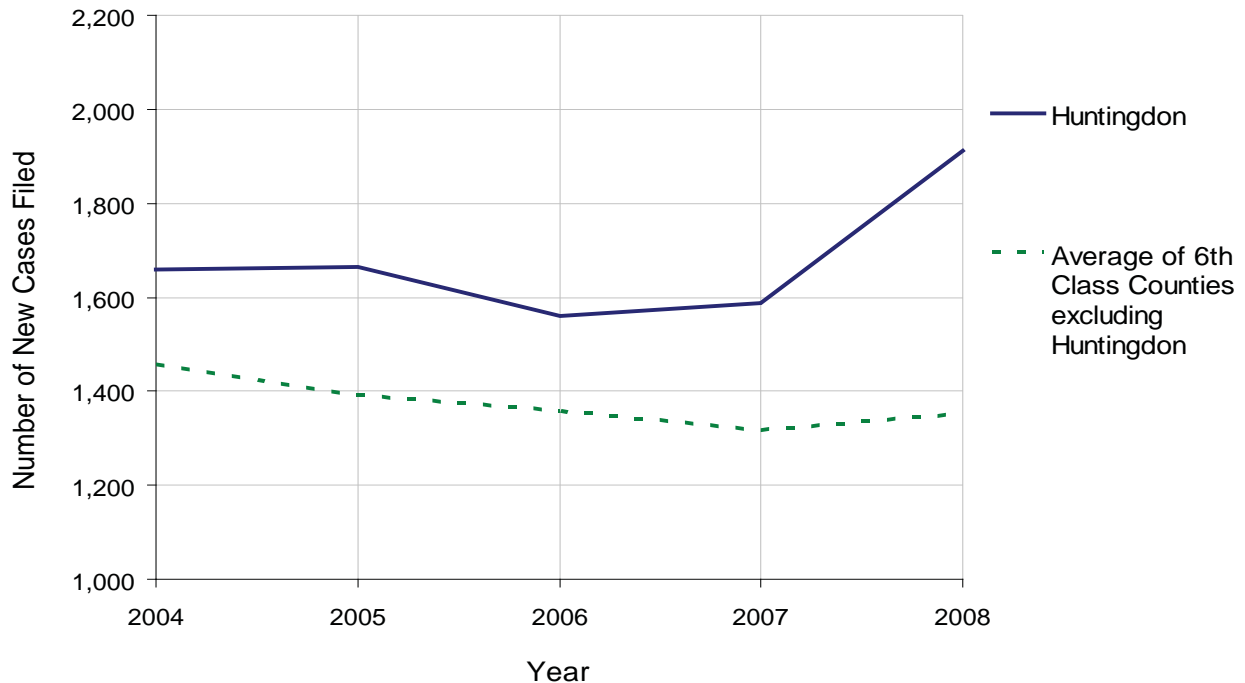
HUNTINGDON COUNTY

2008 Population Estimate: 45,543
 Class of County: 6th
 No. of Common Pleas Court Judgeships: 1



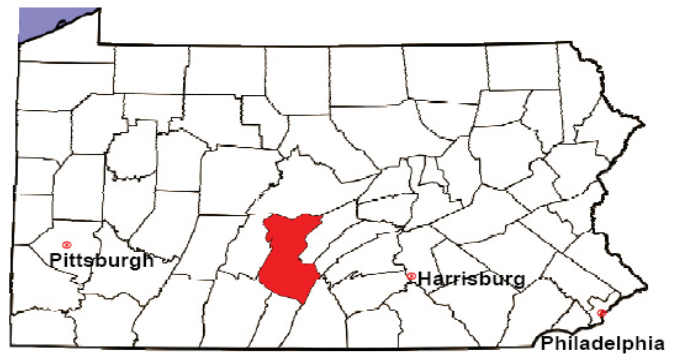
2008 Spousal & Child Support	No. of Petitions	%
Cases Pending 1/1/08	204	
New Cases Filed in '08	1,913	
Dockets Transferred In (+)	8	
Dockets Transferred Out (-)	13	
Cases Available for Processing	2,112	
Processed By:		
Judge	34	1.8%
Intake Officer	1,825	98.2%
Hearing Officer	0	0.0%
Other	0	0.0%
Cases Processed	1,859	100.0%
Cases Pending 12/31/08	253	

Spousal & Child Support New Cases Filed, 1998-2008



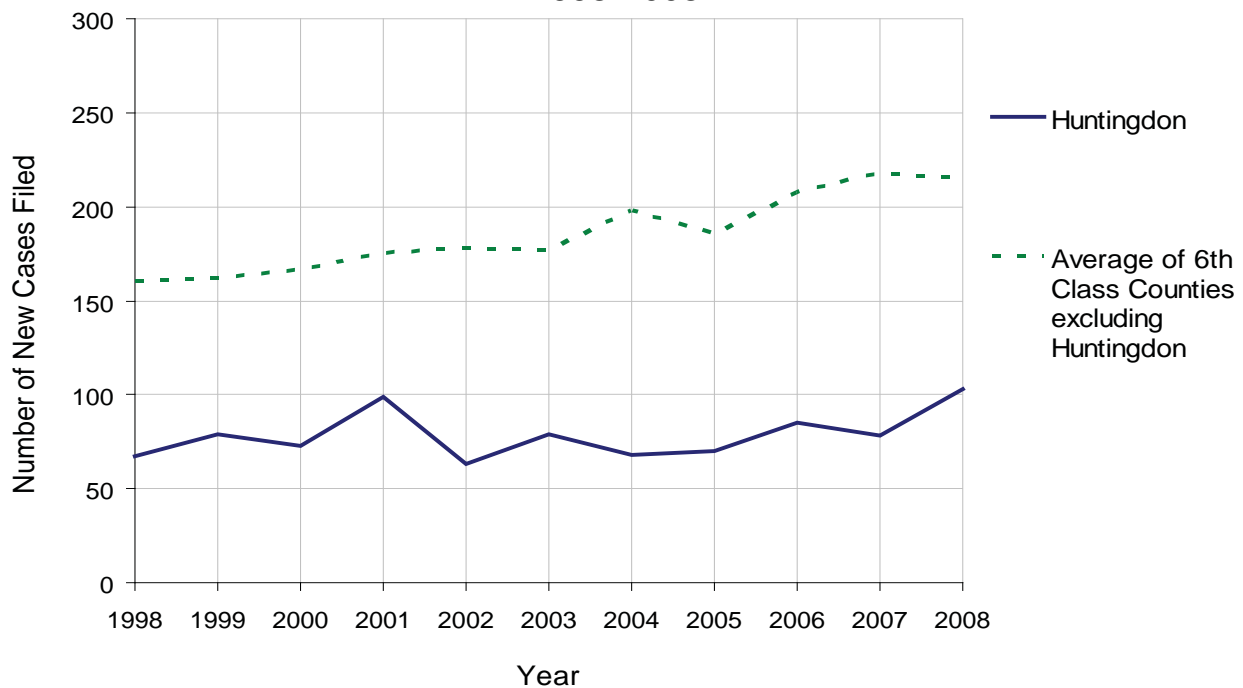
HUNTINGDON COUNTY

2008 Population Estimate: 45,543
 Class of County: 6th
 No. of Common Pleas Court Judgeships: 1



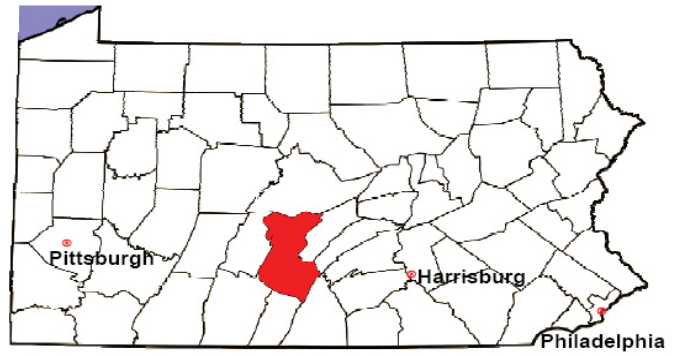
2008 Custody/Partial Custody/Visitation	No. of Petitions	%
Cases Pending 1/1/08	54	
New Cases Filed in '08	103	
Cases Available for Processing	157	
Processed By:		
Judge	99	99.0%
Non-Judicial Officer	0	0.0%
Other	1	1.0%
Cases Processed	100	100.0%
Cases Pending 12/31/08	57	

Custody/Partial Custody/Visitation New Cases Filed
 1998-2008



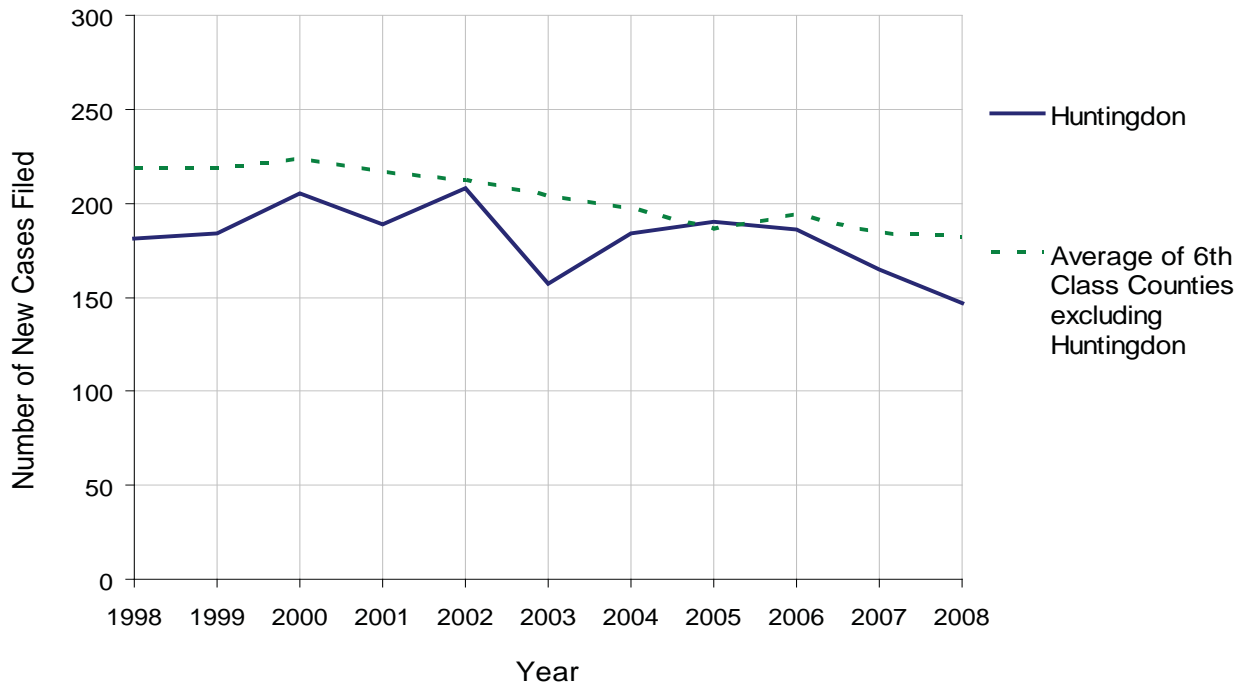
HUNTINGDON COUNTY

2008 Population Estimate: 45,543
 Class of County: 6th
 No. of Common Pleas Court Judgeships: 1



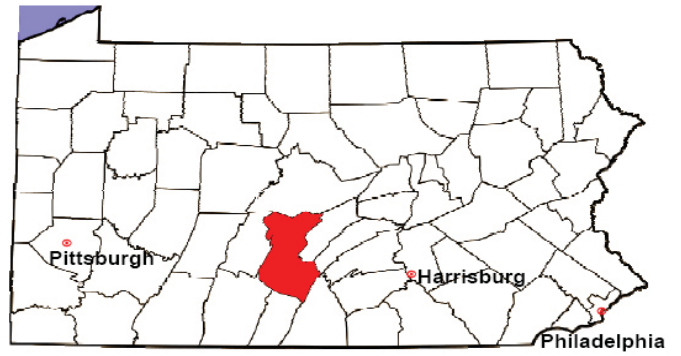
2008 Divorce	No. of Petitions	%
Cases Pending 1/1/08	318	
New Cases Filed in '08	147	
Cases Available for Processing	465	
Processed By:		
Contested Before a Judge	52	26.8%
Contested Before a Master	0	0.0%
Uncontested	81	41.8%
Other	61	31.4%
Cases Processed	194	100.0%
Cases Pending 12/31/08	271	

Divorce New Cases Filed, 1998-2008



HUNTINGDON COUNTY

2008 Population Estimate: 45,543
 Class of County: 6th
 No. of Common Pleas Court Judgeships: 1



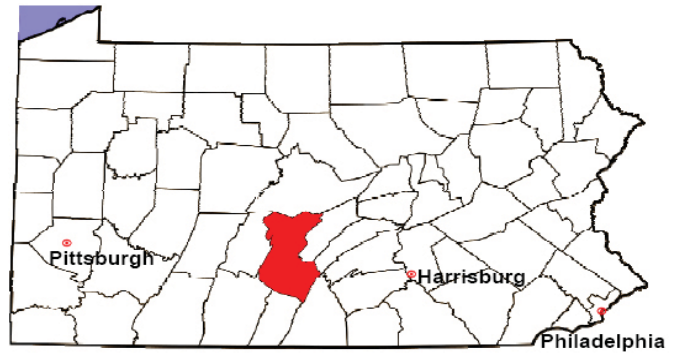
2008 Juvenile Dependency Abuse/Neglect	No. of Petitions	%
Cases Pending 1/1/08	61	
New Cases Filed in '08	45	
Cases Available for Processing	106	
Processed By:		
Judge	64	98.5%
Non-Judicial Officer	0	0.0%
Other	1	1.5%
Cases Processed	65	100.0%
Cases Pending 12/31/08	41	

Abuse/Neglect New Cases Filed, 2000-2008



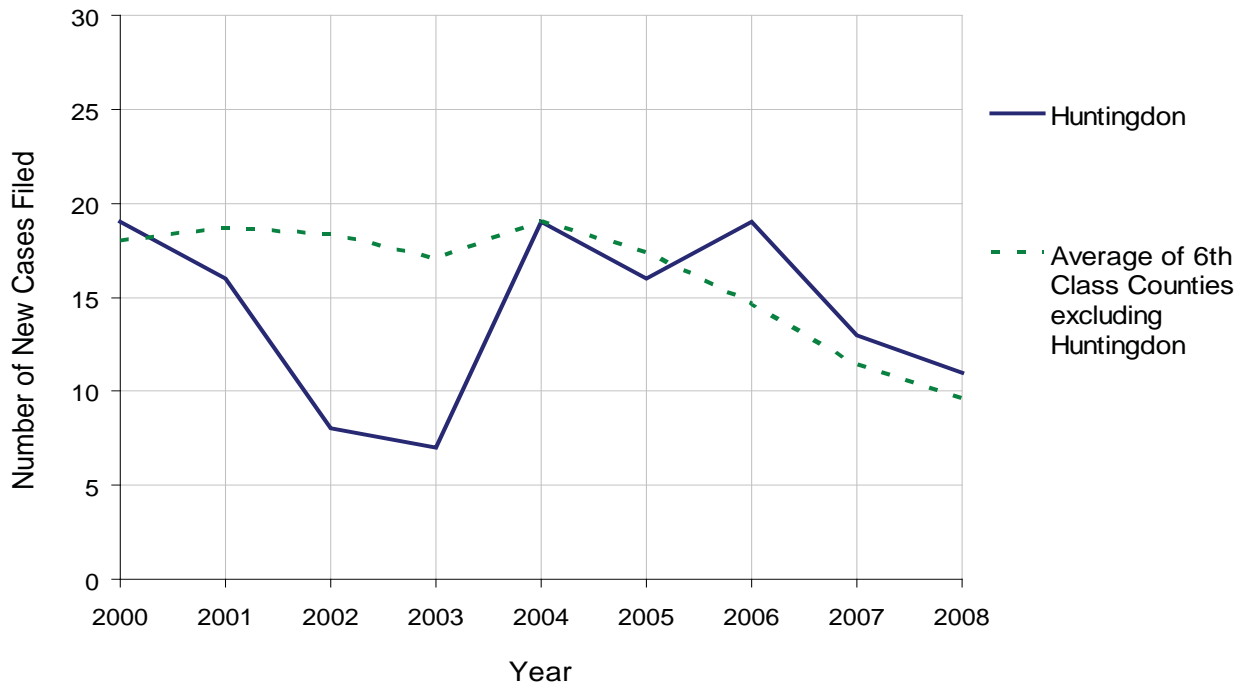
HUNTINGDON COUNTY

2008 Population Estimate: 45,543
 Class of County: 6th
 No. of Common Pleas Court Judgeships: 1



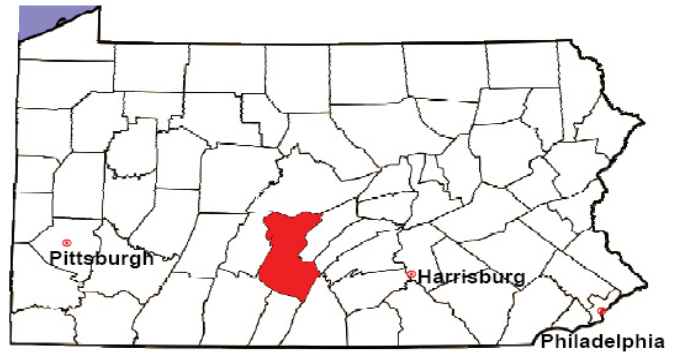
2008 Juvenile Dependency Status Offenses	No. of Petitions	%
Cases Pending 1/1/08	10	
New Cases Filed in '08	11	
Cases Available for Processing	21	
Processed By:		
Judge	14	93.3%
Non-Judicial Officer	0	0.0%
Other	1	6.7%
Cases Processed	15	100.0%
Cases Pending 12/31/08	6	

Status Offenses New Cases Filed, 2000-2008



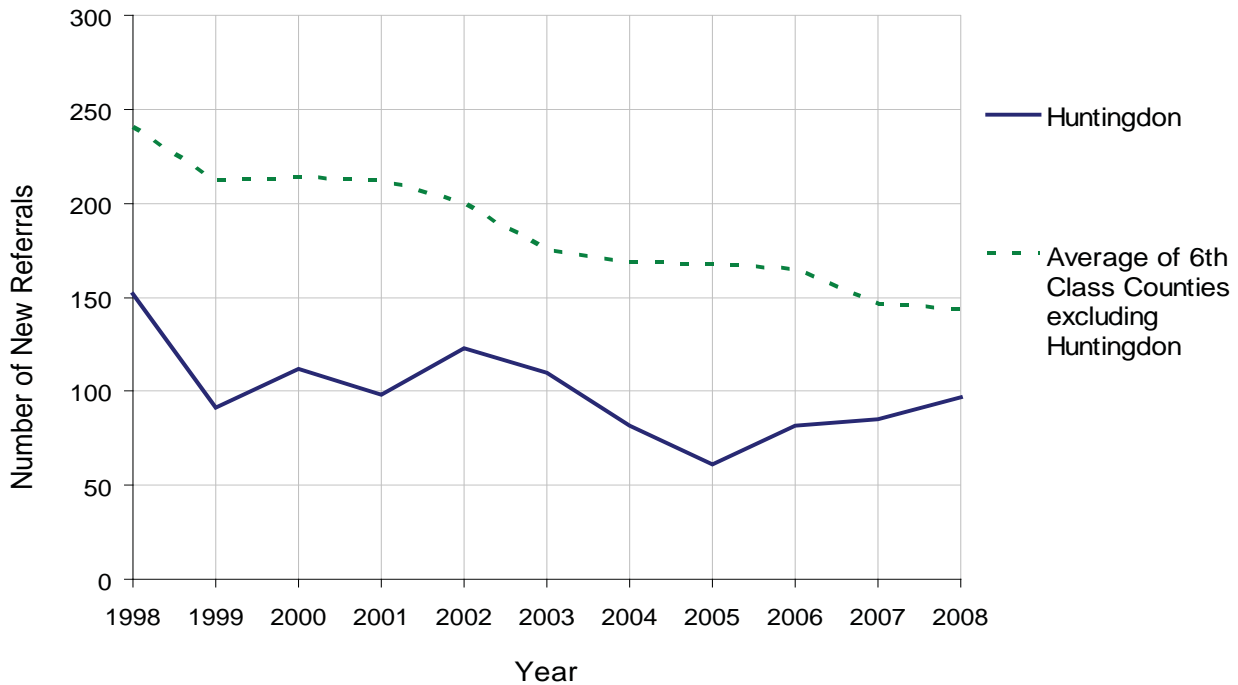
HUNTINGDON COUNTY

2008 Population Estimate: 45,543
 Class of County: 6th
 No. of Common Pleas Court Judgeships: 1



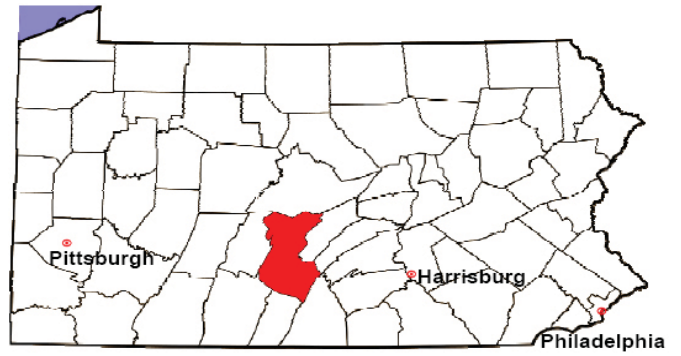
2008 Juvenile Delinquency	No. of Referrals	%
Cases Pending 1/1/08	9	
New Referrals in '08	97	
Cases Available for Processing	106	
Processed By:		
Judge	61	85.9%
Non-Judicial Officer	10	14.1%
Other	0	0.0%
Cases Processed	71	100.0%
Cases Pending 12/31/08	35	

Juvenile Delinquency New Referrals, 1998-2008



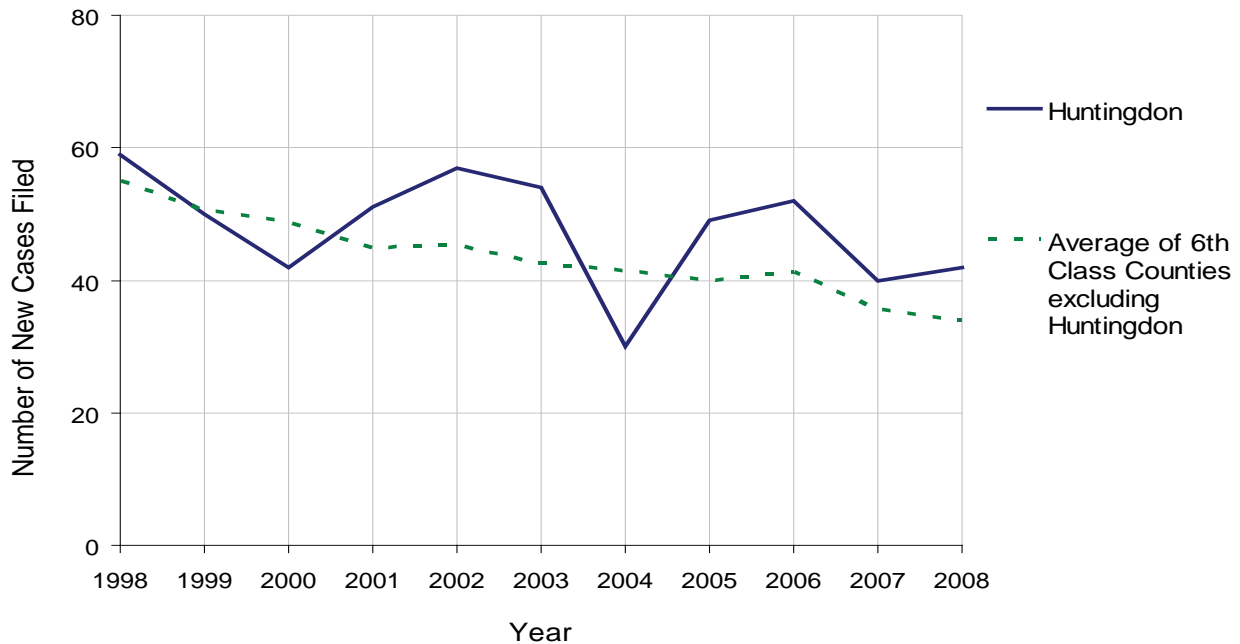
HUNTINGDON COUNTY

2008 Population Estimate: 45,543
 Class of County: 6th
 No. of Common Pleas Court Judgeships: 1



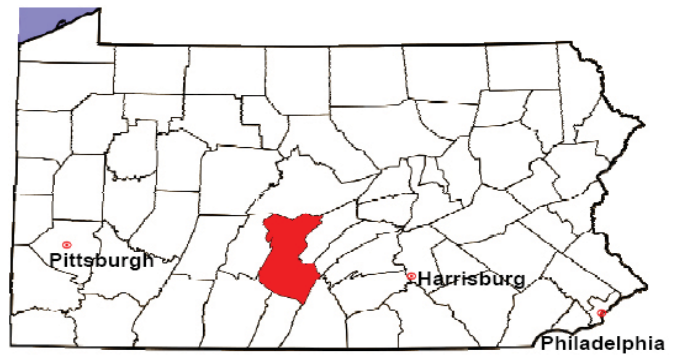
2008 Accounts	No. of Accounts	%
Cases Pending 1/1/08	12	
New Cases Filed in '08	42	
Cases Available for Processing	54	
Processed By:		
Contested before a Judge	3	6.5%
Contested before a Non-Judicial Officer	0	0.0%
Uncontested	42	91.3%
Other	1	2.2%
Cases Processed	46	100.0%
Cases Pending 12/31/08	8	

Accounts New Cases Filed, 1998-2008



HUNTINGDON COUNTY

2008 Population Estimate: 45,543
 Class of County: 6th
 No. of Common Pleas Court Judgeships: 1

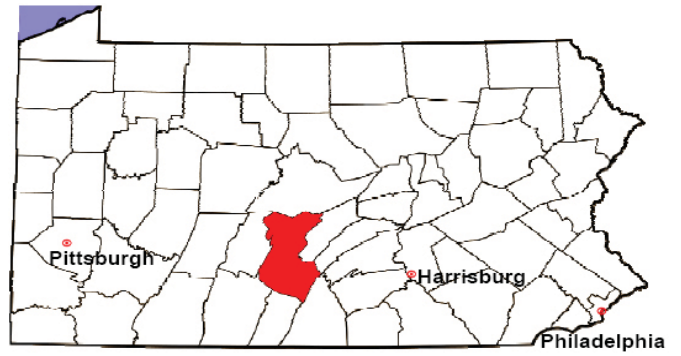


2008 Adoptions		No. of Cases	%
Cases Pending 1/1/08		20	
New Cases Filed in '08		29	
Cases Available for Processing		49	
Processed By:			
Contested before a Judge	Granted	0	0.0%
	Denied	0	0.0%
Uncontested	Granted	18	94.7%
	Denied	0	0.0%
Other		1	5.3%
Cases Processed		19	100.0%
Cases Pending 12/31/08		30	

Note: Prior to 2008, each petition was counted as one new case, regardless of the number of children listed on the petition. Starting in 2008, each child listed on a petition is counted as a separate case. Therefore, statistics for 2008 should not be compared with those for previous years.

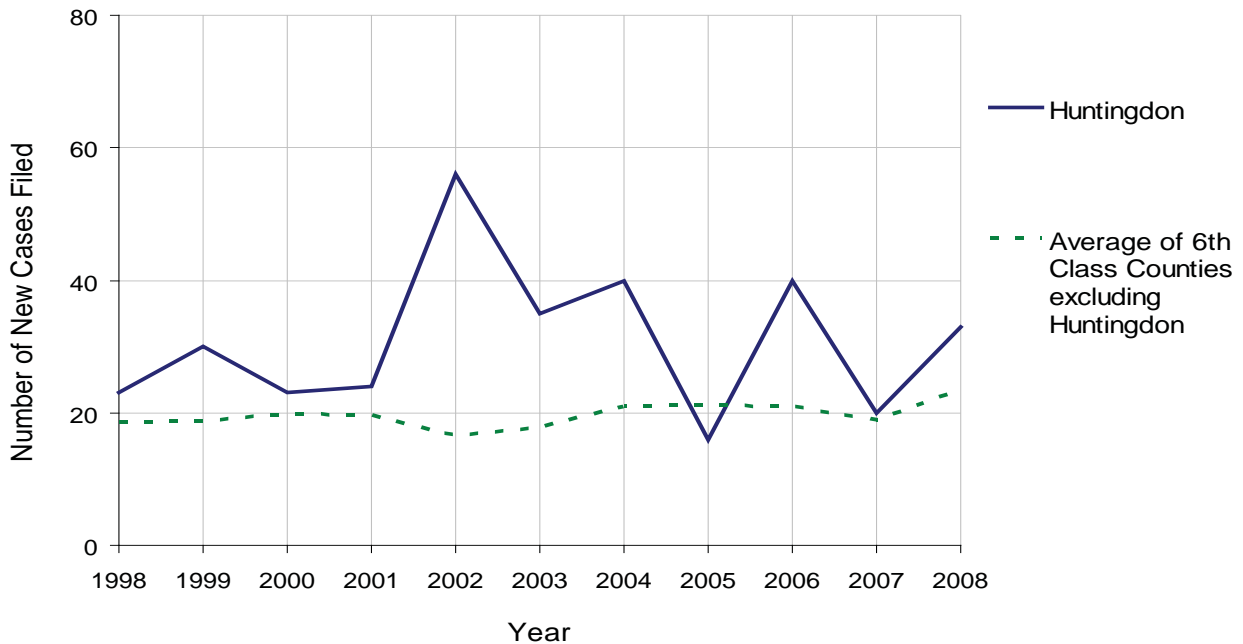
HUNTINGDON COUNTY

2008 Population Estimate: 45,543
 Class of County: 6th
 No. of Common Pleas Court Judgeships: 1



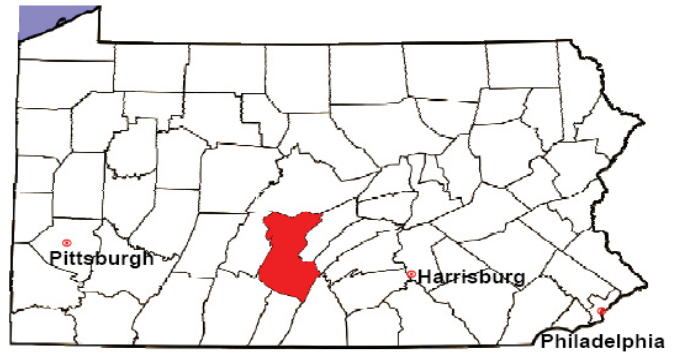
2008 Relinquishments/Terminations	No. of Petitions	%
Cases Pending 1/1/08	49	
New Cases Filed in '08	33	
Cases Available for Processing	82	
Processed By:		
Contested before a Judge	1	5.6%
Uncontested	16	88.9%
Other	1	5.6%
Cases Processed	18	100.0%
Cases Pending 12/31/08	64	

Relinquishments/Terminations New Cases Filed, 1998-2008



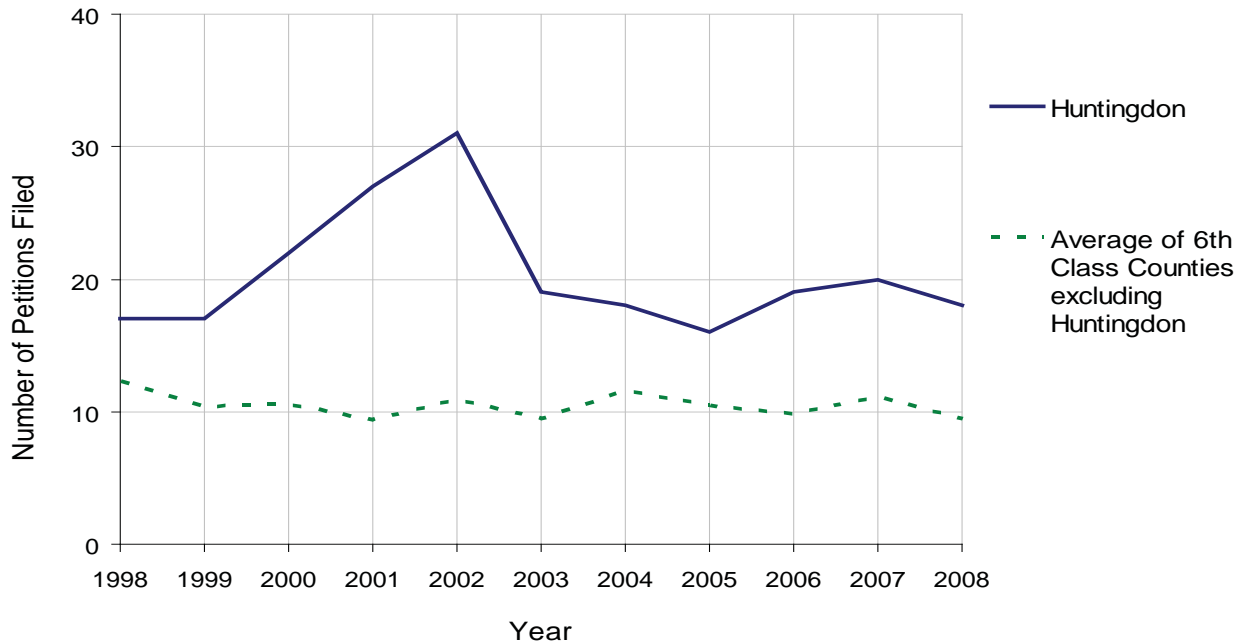
HUNTINGDON COUNTY

2008 Population Estimate: 45,543
 Class of County: 6th
 No. of Common Pleas Court Judgeships: 1



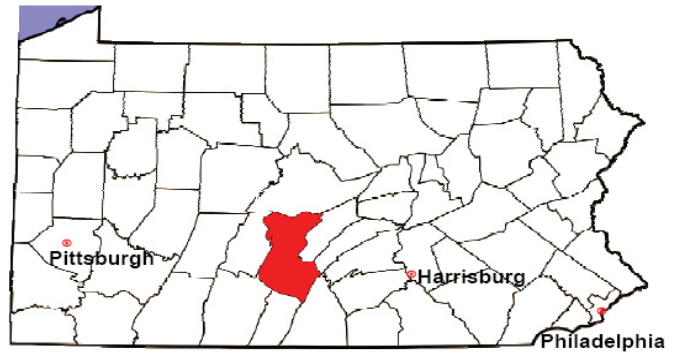
2008 Appointment of Guardians	No. of Petitions	%
Cases Pending 1/1/08	36	
New Cases Filed in '08	18	
Cases Available for Processing	54	
Processed By:		
Contested before a Judge	0	0.0%
Uncontested	2	50.0%
Other	2	50.0%
Cases Processed	4	100.0%
Cases Pending 12/31/08	50	

Appointment of Guardians Petitions Filed, 1998-2008



HUNTINGDON COUNTY

2008 Population Estimate: 45,543
 Class of County: 6th
 No. of Common Pleas Court Judgeships: 1



2008 Jury Activity & Performance Measures		
A. Juror Days	775	
B. Number Sent to Voir Dire	420	
Voir Dire Attendance Rate $(B/A * 100)$		54.2%
C. Number of Voir Dires Started	11	
Juror Days Per Voir Dire Starts (A/C)		70
D. Number of Jurors Selected	154	
Juror Selection Rate $(D/B * 100)$		36.7%
E. Number of Jury Trials Started	7	
Juror Days Per Trial Starts (A/E)		111
Number of Voir Dires Not Resulting in Trial $(C-E)$		4
Percent Voir Dires Not Resulting in Trial $(C-E)/C * 100$		36.4%
F. Pool Days	9	
G. Zero Panel Days	0	
Percent Zero Panel Days $(G/F * 100)$		0.0%
H. Total Juror Fees Incurred	\$12,054	
Average Juror Fees Per Trial (H/E)		\$1,722

Average Juror Fees Per Trial, 1998-2008

