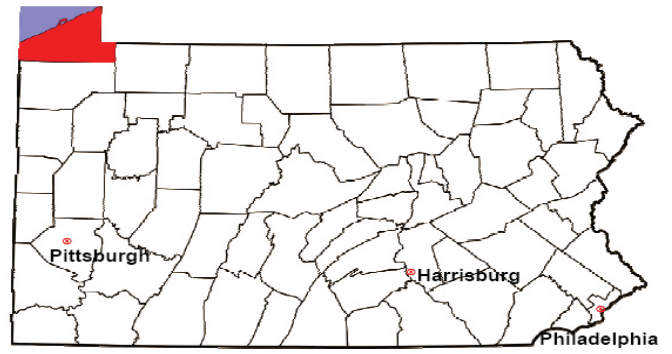


ERIE COUNTY

2008 Population Estimate: 279,175

Class of County: 3rd

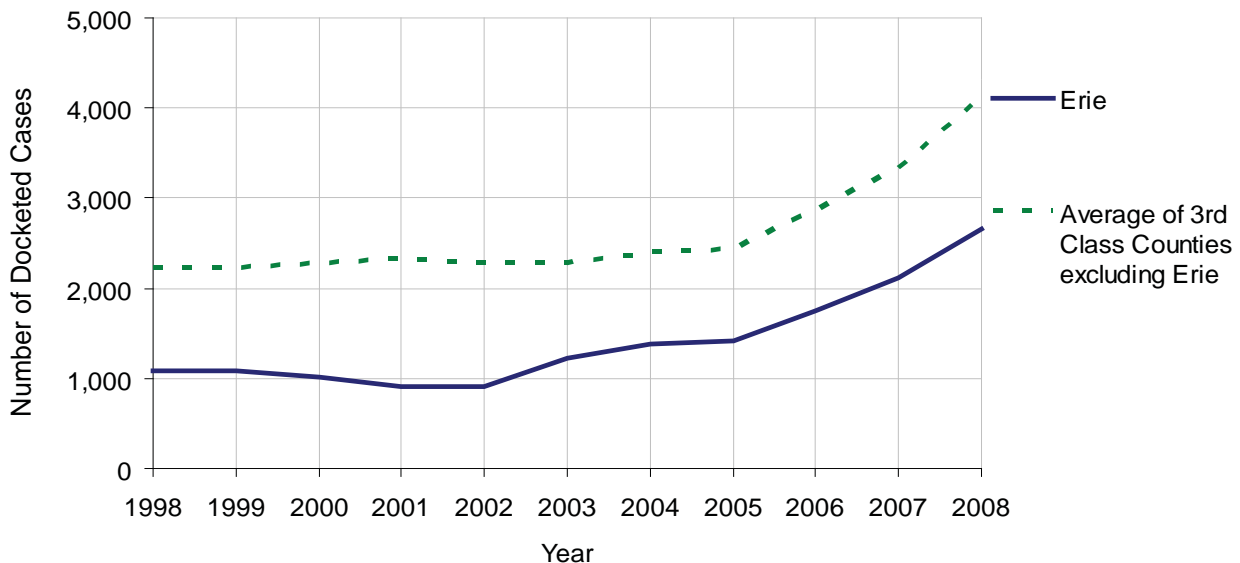
No. of Common Pleas Court Judgeships: 9



2008 Civil		Civil Action		
Docketed Cases		2,652		
Arbitrated Cases		52		
Trial-Ready Cases:		Civil Action	Other	Total
Cases Pending 1/1/08		14	0	14
Became Trial Ready in '08		42	6	48
Restored to Trial List		1	0	1
Appeals from Arbitration		3	0	3
Cases Available for Trial		60	6	66
Disposed By:				
Settlement		28	5	33
Non-Jury Trial		5	0	5
Jury Trial		13	0	13
Stricken from Trial List		5	0	5
Other		3	0	3
Cases Disposed		54	5	59
Cases Pending 12/31/08		6	1	7

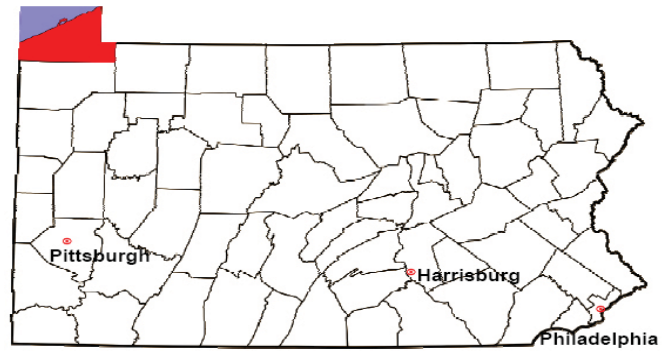
Age of Trial-Ready Cases as of 12/31/08 (Civil Action Only)		
0-6 months	4	67%
7-12 months	2	33%
13-18 months	0	0%
19-24 months	0	0%
25-30 months	0	0%
31-36 months	0	0%
Over 36 months	0	0%
Total	6	100%

Docketed Cases, 1998-2008



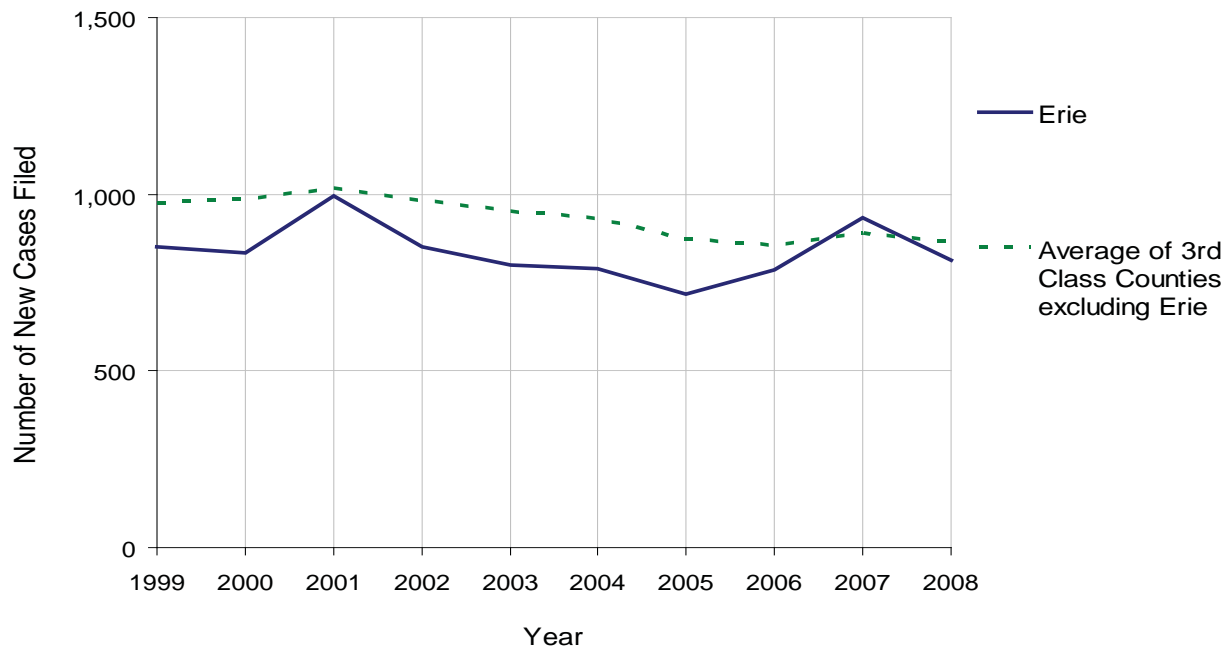
ERIE COUNTY

2008 Population Estimate: 279,175
 Class of County: 3rd
 No. of Common Pleas Court Judgeships: 9



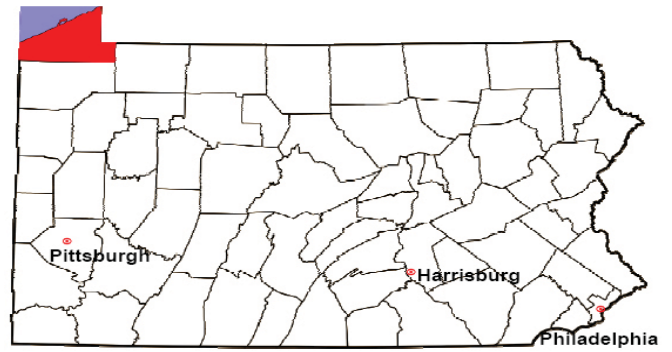
2008 Protection From Abuse	No. of Petitions	%
Cases Pending 1/1/08	56	
New Cases Filed in '08	813	
Cases Available for Processing	869	
Processed By:		
Final Order After Hearing	206	25.8%
Final Order by Stipulation or Agreement	310	38.8%
Dismissal	268	33.5%
Withdrawal	15	1.9%
Other	1	0.1%
Cases Processed	800	100.0%
Cases Pending 12/31/08	69	

PFA New Cases Filed, 1999-2008



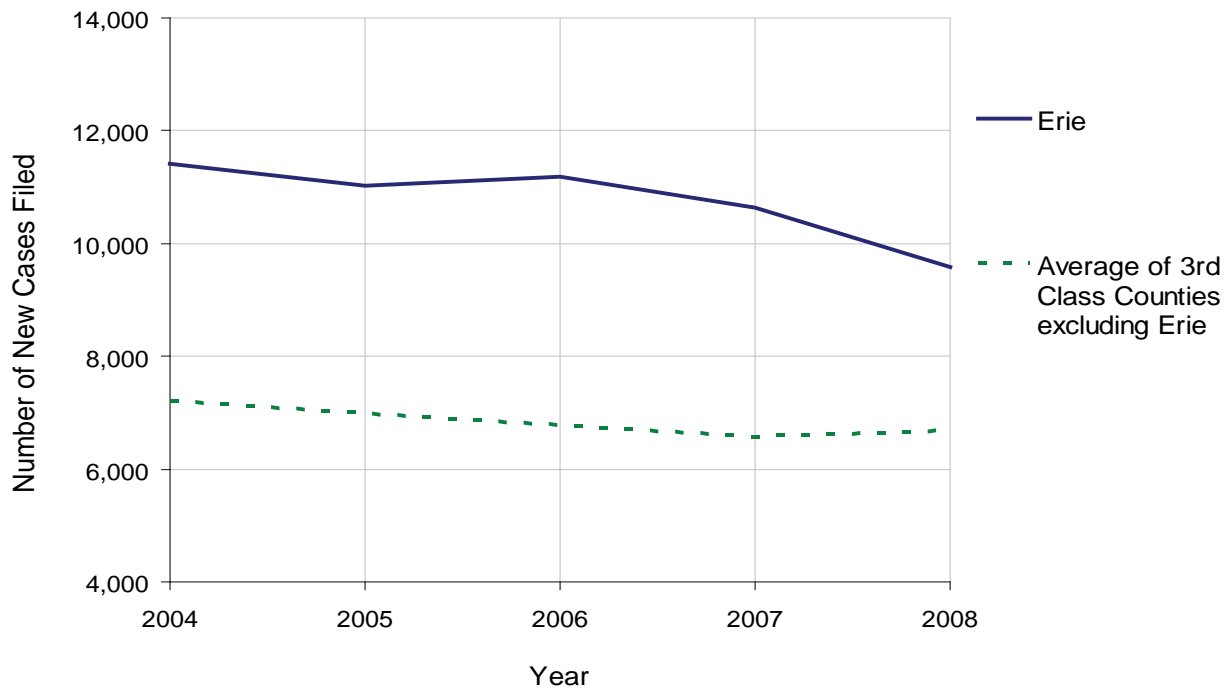
ERIE COUNTY

2008 Population Estimate: 279,175
 Class of County: 3rd
 No. of Common Pleas Court Judgeships: 9



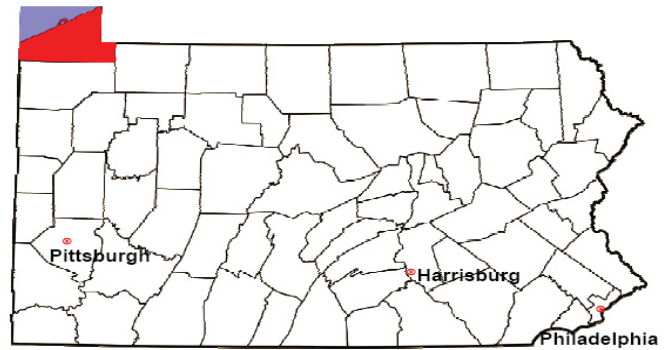
2008 Spousal & Child Support	No. of Petitions	%
Cases Pending 1/1/08	1,573	
New Cases Filed in '08	9,586	
Dockets Transferred In (+)	40	
Dockets Transferred Out (-)	35	
Cases Available for Processing	11,164	
Processed By:		
Judge	343	3.4%
Intake Officer	9,888	96.6%
Hearing Officer	0	0.0%
Other	0	0.0%
Cases Processed	10,231	100.0%
Cases Pending 12/31/08	933	

Spousal & Child Support New Cases Filed, 1998-2008



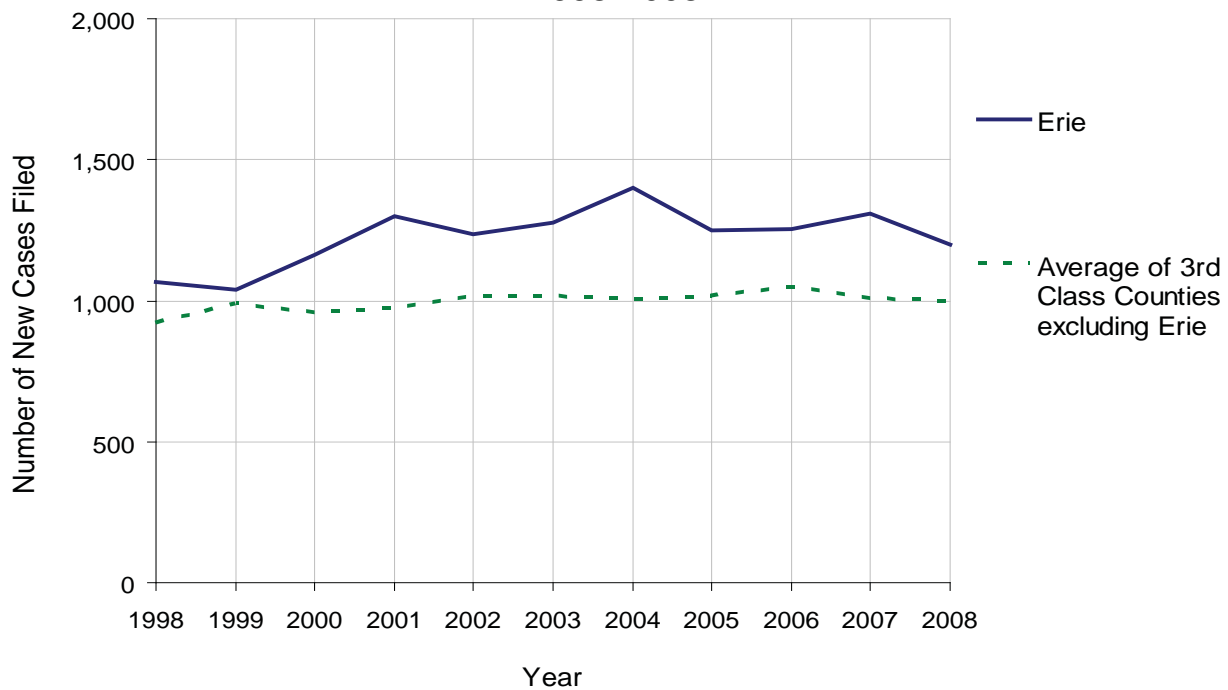
ERIE COUNTY

2008 Population Estimate: 279,175
 Class of County: 3rd
 No. of Common Pleas Court Judgeships: 9



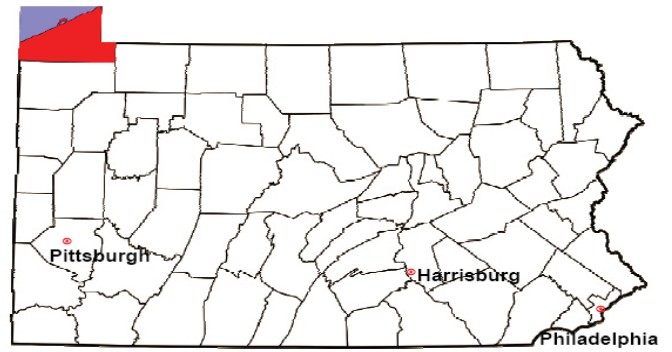
2008 Custody/Partial Custody/Visitation	No. of Petitions	%
Cases Pending 1/1/08	272	
New Cases Filed in '08	1,200	
Cases Available for Processing	1,472	
Processed By:		
Judge	139	12.3%
Non-Judicial Officer	989	87.7%
Other	0	0.0%
Cases Processed	1,128	100.0%
Cases Pending 12/31/08	344	

Custody/Partial Custody/Visitation New Cases Filed
 1998-2008



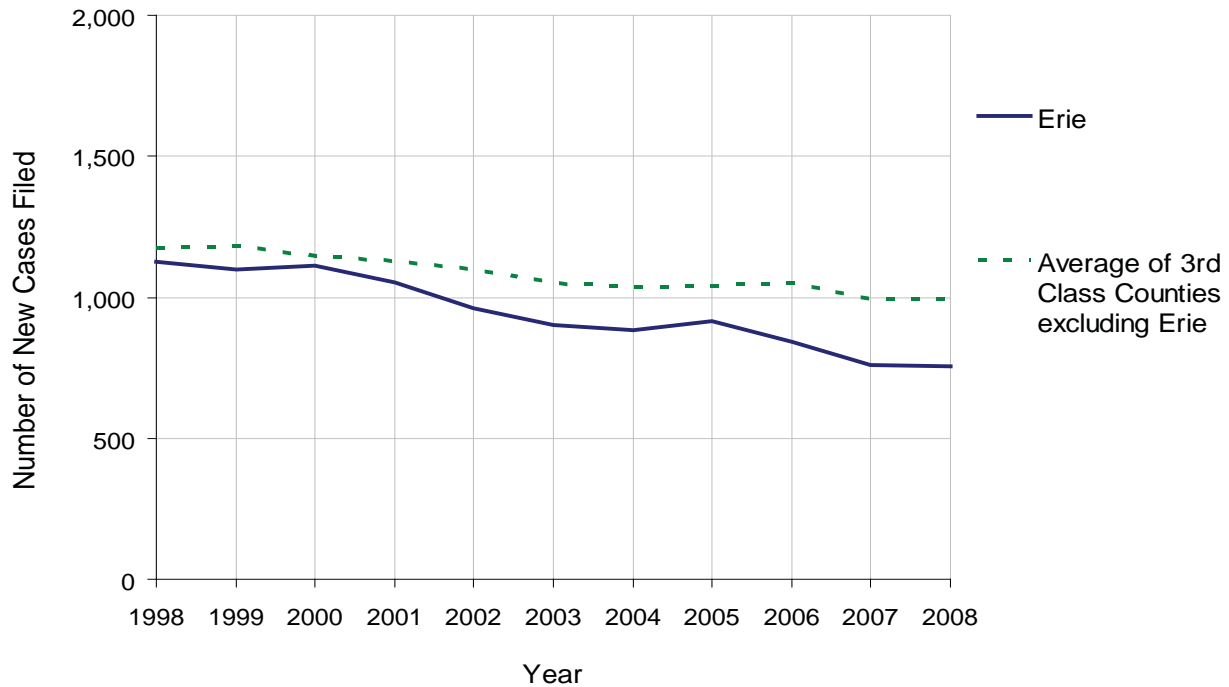
ERIE COUNTY

2008 Population Estimate: 279,175
 Class of County: 3rd
 No. of Common Pleas Court Judgeships: 9



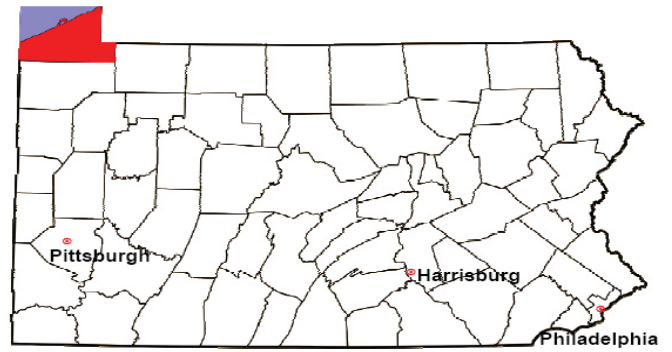
2008 Divorce	No. of Petitions	%
Cases Pending 1/1/08	178	
New Cases Filed in '08	757	
Cases Available for Processing	935	
Processed By:		
Contested Before a Judge	0	0.0%
Contested Before a Master	55	7.4%
Uncontested	688	92.6%
Other	0	0.0%
Cases Processed	743	100.0%
Cases Pending 12/31/08	192	

Divorce New Cases Filed, 1998-2008



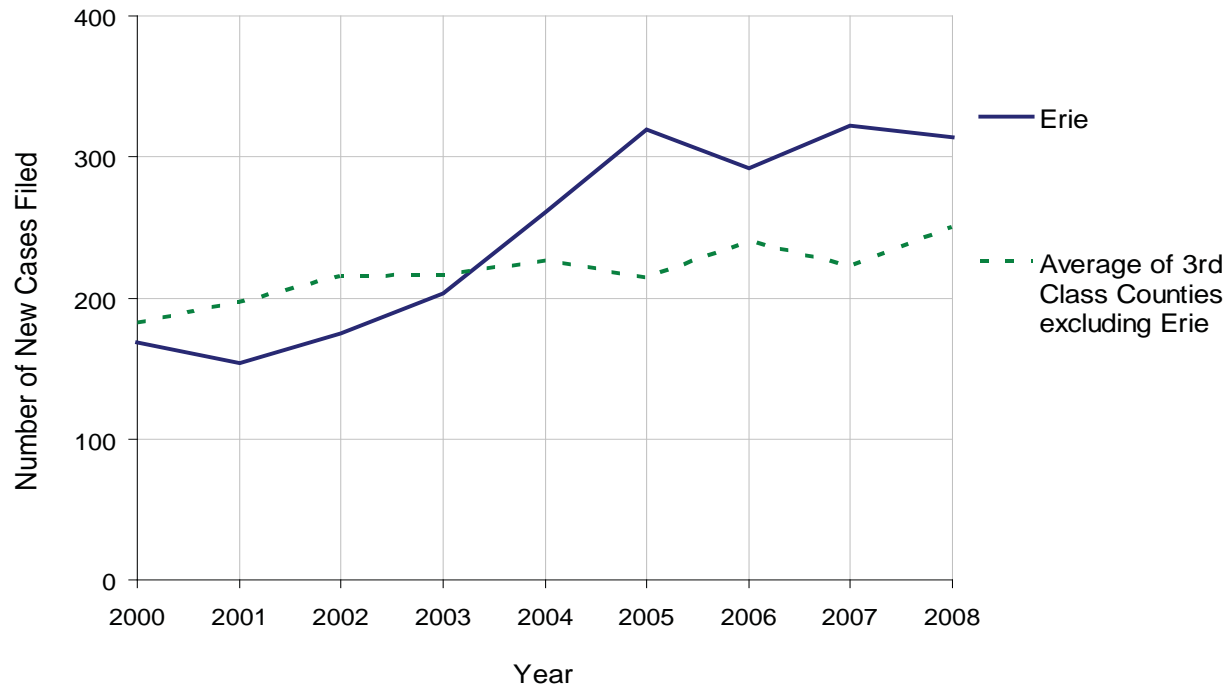
ERIE COUNTY

2008 Population Estimate: 279,175
 Class of County: 3rd
 No. of Common Pleas Court Judgeships: 9



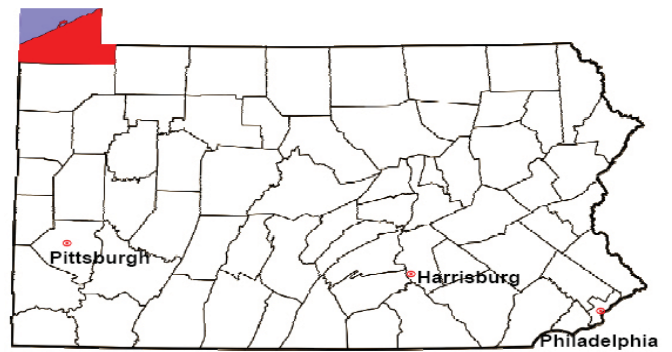
2008 Juvenile Dependency Abuse/Neglect	No. of Petitions	%
Cases Pending 1/1/08	10	
New Cases Filed in '08	314	
Cases Available for Processing	324	
Processed By:		
Judge	19	6.2%
Non-Judicial Officer	265	86.6%
Other	22	7.2%
Cases Processed	306	100.0%
Cases Pending 12/31/08	18	

Abuse/Neglect New Cases Filed, 2000-2008



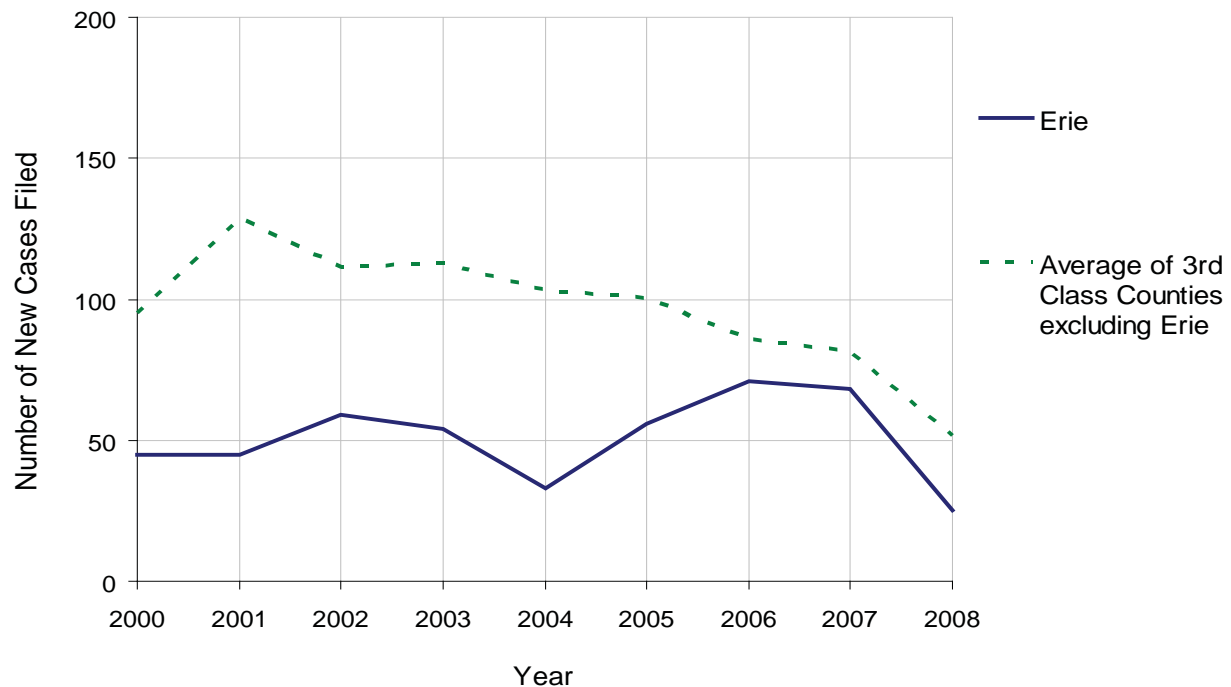
ERIE COUNTY

2008 Population Estimate: 279,175
 Class of County: 3rd
 No. of Common Pleas Court Judgeships: 9



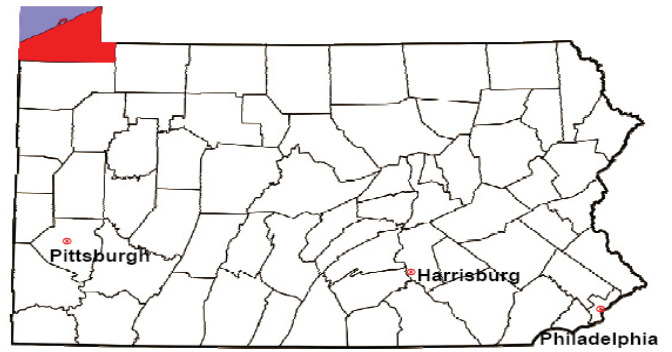
2008 Juvenile Dependency Status Offenses	No. of Petitions	%
Cases Pending 1/1/08	0	
New Cases Filed in '08	25	
Cases Available for Processing	25	
Processed By:		
Judge	5	20.0%
Non-Judicial Officer	20	80.0%
Other	0	0.0%
Cases Processed	25	100.0%
Cases Pending 12/31/08	0	

Status Offenses New Cases Filed, 2000-2008



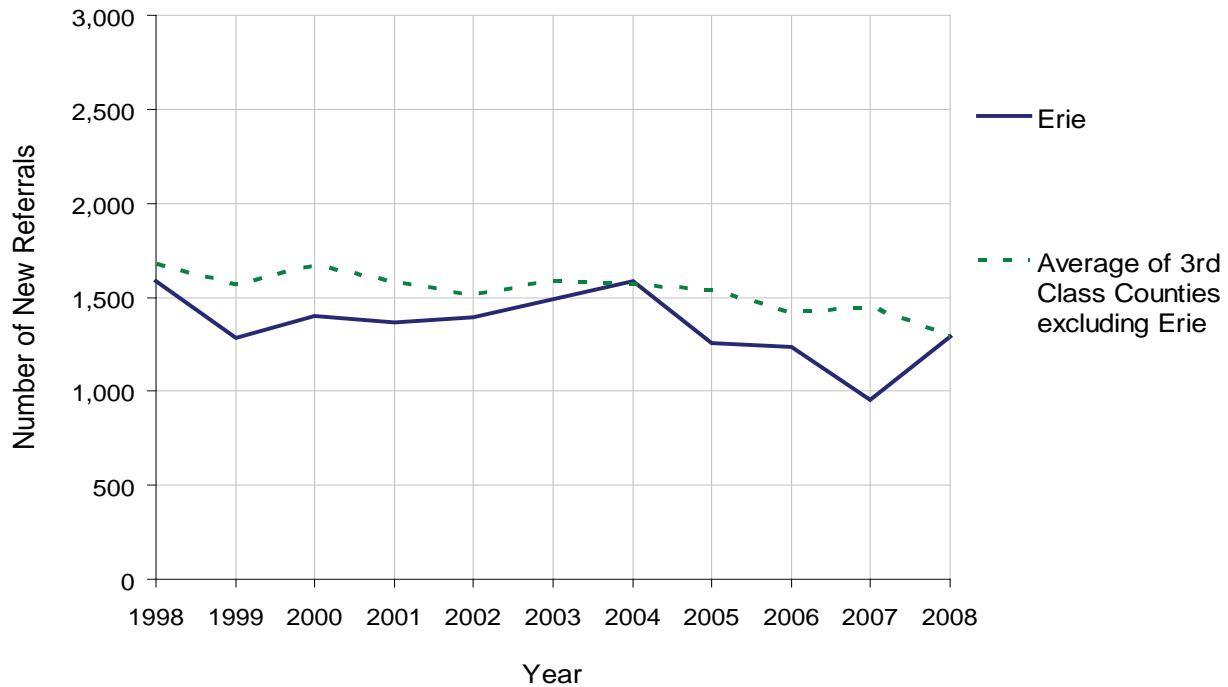
ERIE COUNTY

2008 Population Estimate: 279,175
 Class of County: 3rd
 No. of Common Pleas Court Judgeships: 9



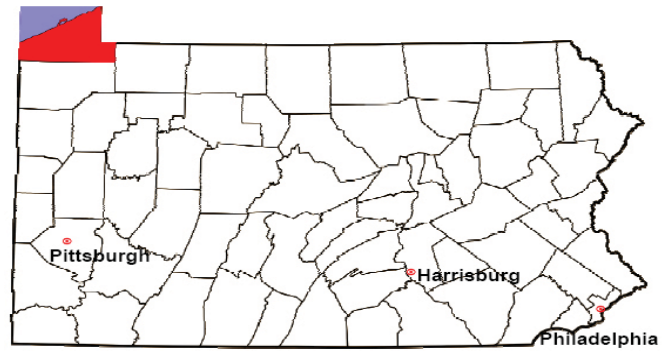
2008 Juvenile Delinquency	No. of Referrals	%
Cases Pending 1/1/08	57	
New Referrals in '08	1,291	
Cases Available for Processing	1,348	
Processed By:		
Judge	542	57.2%
Non-Judicial Officer	335	35.3%
Other	71	7.5%
Cases Processed	948	100.0%
Cases Pending 12/31/08	400	

Juvenile Delinquency New Referrals, 1998-2008



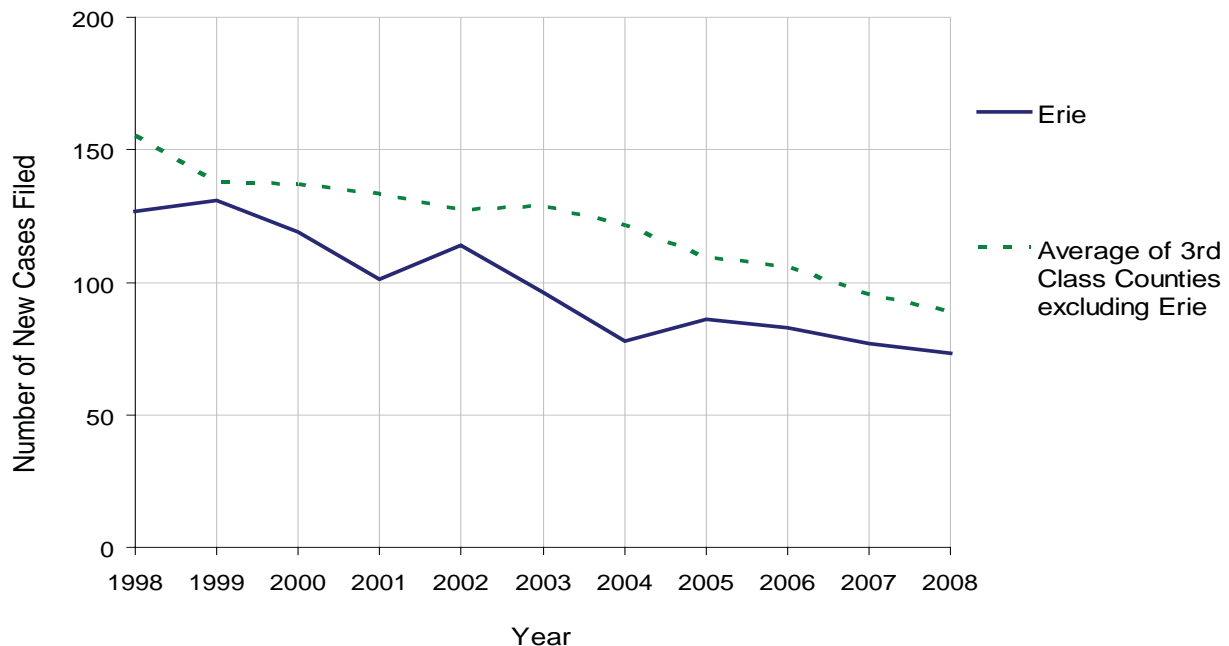
ERIE COUNTY

2008 Population Estimate: 279,175
 Class of County: 3rd
 No. of Common Pleas Court Judgeships: 9



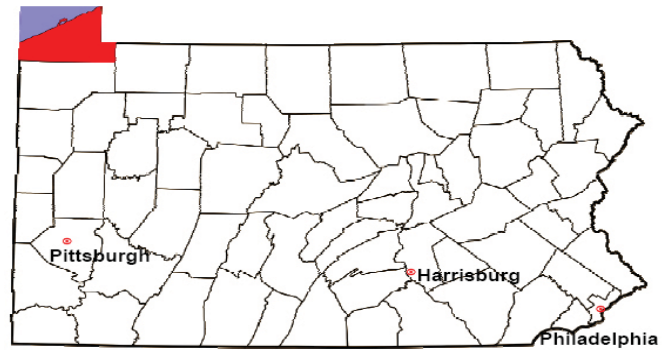
2008 Accounts	No. of Accounts	%
Cases Pending 1/1/08	23	
New Cases Filed in '08	73	
Cases Available for Processing	96	
Processed By:		
Contested before a Judge	0	0.0%
Contested before a Non-Judicial Officer	1	1.4%
Uncontested	72	98.6%
Other	0	0.0%
Cases Processed	73	100.0%
Cases Pending 12/31/08	23	

Accounts New Cases Filed, 1998-2008



ERIE COUNTY

2008 Population Estimate: 279,175
 Class of County: 3rd
 No. of Common Pleas Court Judgeships: 9

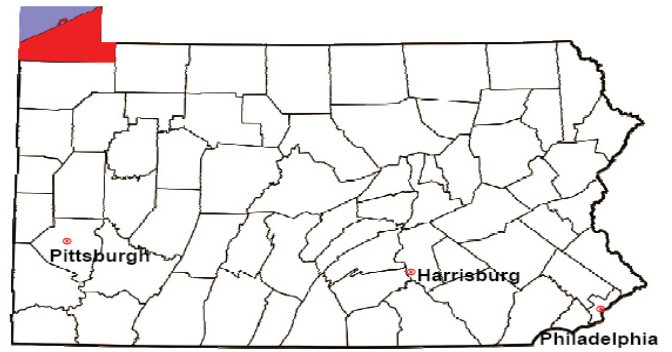


2008 Adoptions		No. of Cases	%
Cases Pending 1/1/08		49	
New Cases Filed in '08		266	
Cases Available for Processing		315	
Processed By:			
Contested before a Judge	Granted	0	0.0%
	Denied	0	0.0%
Uncontested	Granted	246	96.9%
	Denied	0	0.0%
Other		8	3.1%
Cases Processed		254	100.0%
Cases Pending 12/31/08		61	

Note: Prior to 2008, each petition was counted as one new case, regardless of the number of children listed on the petition. Starting in 2008, each child listed on a petition is counted as a separate case. Therefore, statistics for 2008 should not be compared with those for previous years.

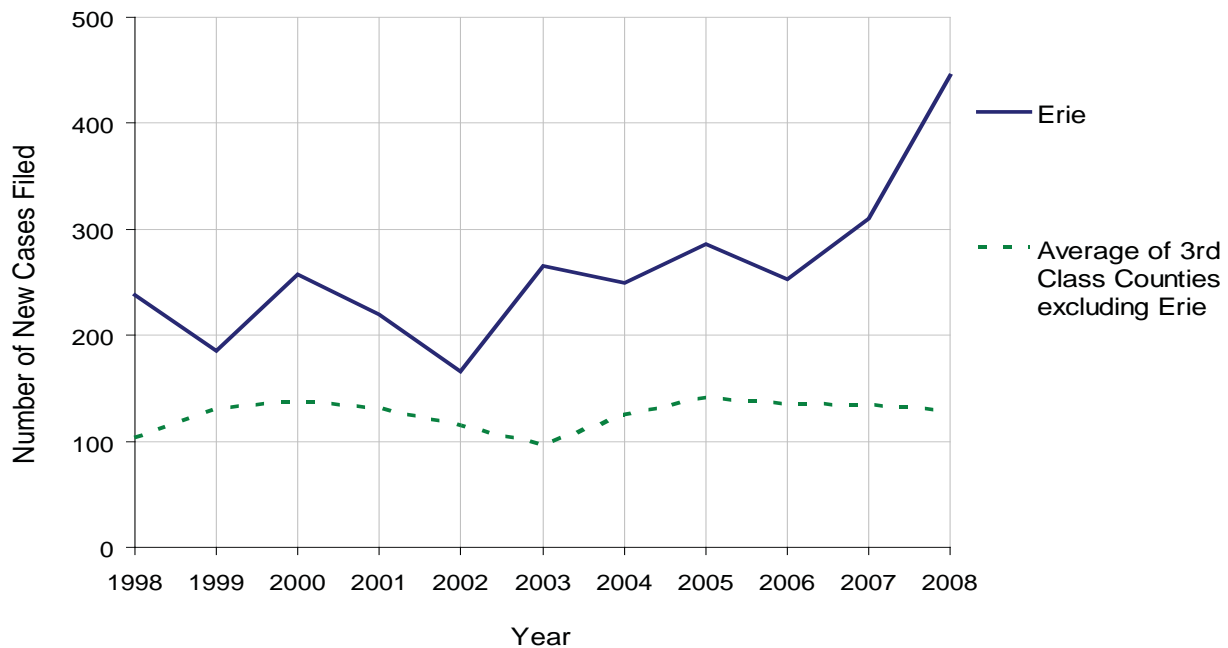
ERIE COUNTY

2008 Population Estimate: 279,175
 Class of County: 3rd
 No. of Common Pleas Court Judgeships: 9



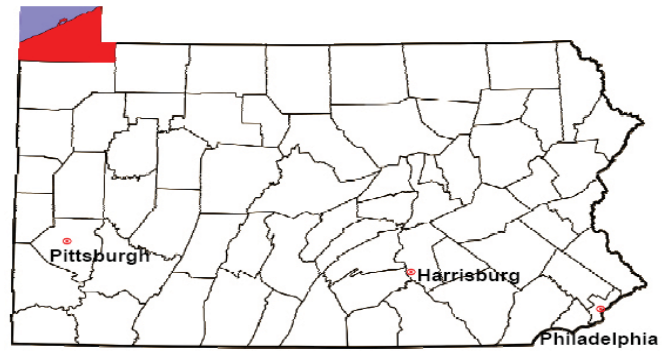
2008 Relinquishments/Terminations	No. of Petitions	%
Cases Pending 1/1/08	233	
New Cases Filed in '08	445	
Cases Available for Processing	678	
Processed By:		
Contested before a Judge	56	13.7%
Uncontested	311	76.2%
Other	41	10.0%
Cases Processed	408	100.0%
Cases Pending 12/31/08	270	

Relinquishments/Terminations New Cases Filed, 1998-2008



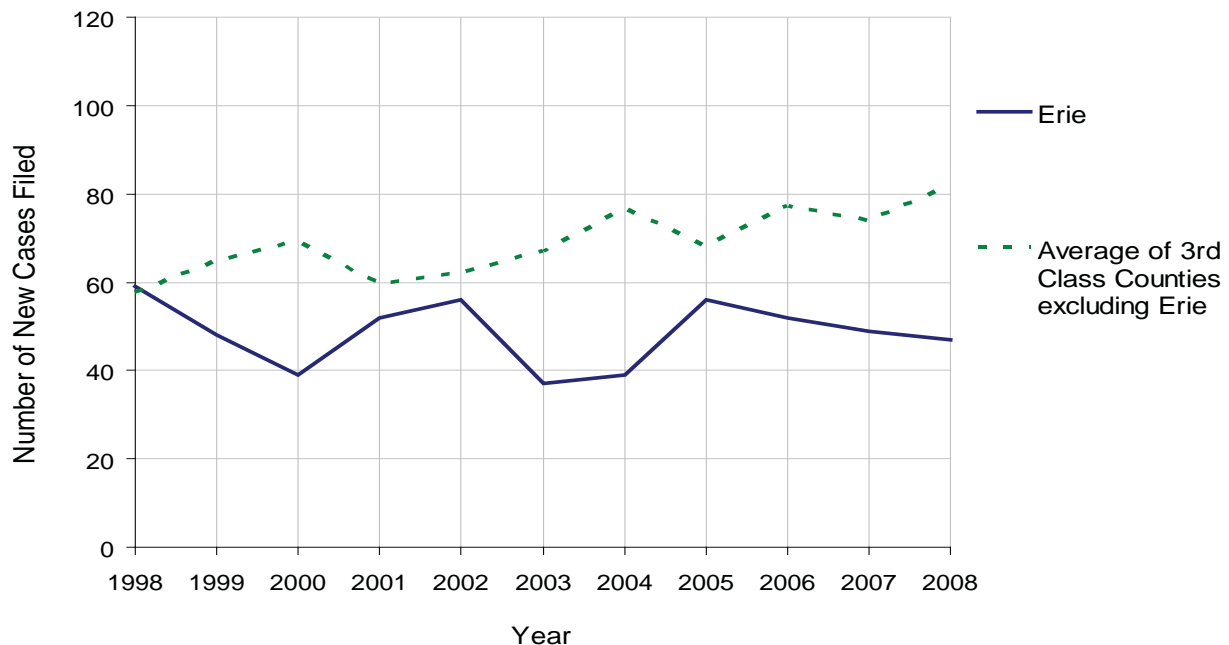
ERIE COUNTY

2008 Population Estimate: 279,175
 Class of County: 3rd
 No. of Common Pleas Court Judgeships: 9



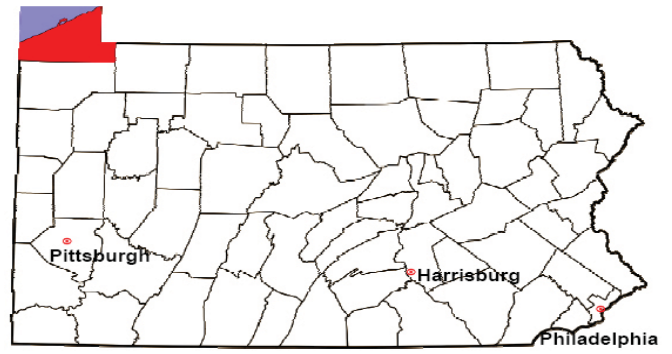
2008 Appointment of Guardians	No. of Petitions	%
Cases Pending 1/1/08	12	
New Cases Filed in '08	47	
Cases Available for Processing	59	
Processed By:		
Contested before a Judge	1	2.3%
Uncontested	27	61.4%
Other	16	36.4%
Cases Processed	44	100.0%
Cases Pending 12/31/08	15	

Appointment of Guardians New Cases Filed, 1998-2008



ERIE COUNTY

2008 Population Estimate: 279,175
 Class of County: 3rd
 No. of Common Pleas Court Judgeships: 9



2008 Jury Activity & Performance Measures		
A. Juror Days	5,677	
B. Number Sent to Voir Dire	4,740	
Voir Dire Attendance Rate $(B/A * 100)$		83.5%
C. Number of Voir Dires Started	131	
Juror Days Per Voir Dire Starts (A/C)		43
D. Number of Jurors Selected	1,562	
Juror Selection Rate $(D/B * 100)$		33.0%
E. Number of Jury Trials Started	122	
Juror Days Per Trial Starts (A/E)		47
Number of Voir Dires Not Resulting in Trial $(C-E)$		9
Percent Voir Dires Not Resulting in Trial $(C-E)/C * 100$		6.9%
F. Pool Days	70	
G. Zero Panel Days	6	
Percent Zero Panel Days $(G/F * 100)$		8.6%
H. Total Juror Fees Incurred	\$102,807	
Average Juror Fees Per Trial (H/E)		\$843

Average Juror Fees Per Trial, 1998-2008

