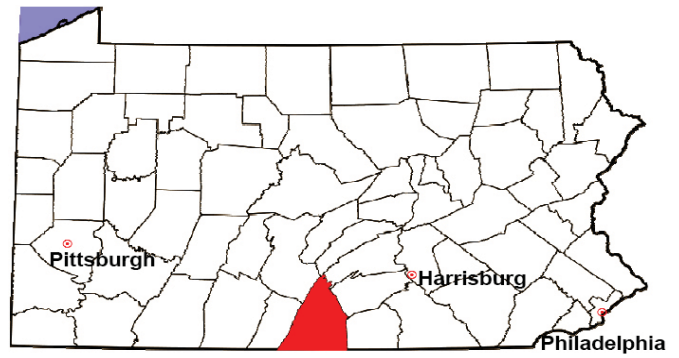


FRANKLIN COUNTY

2008 Population Estimate: 143,495

Class of County: 5th

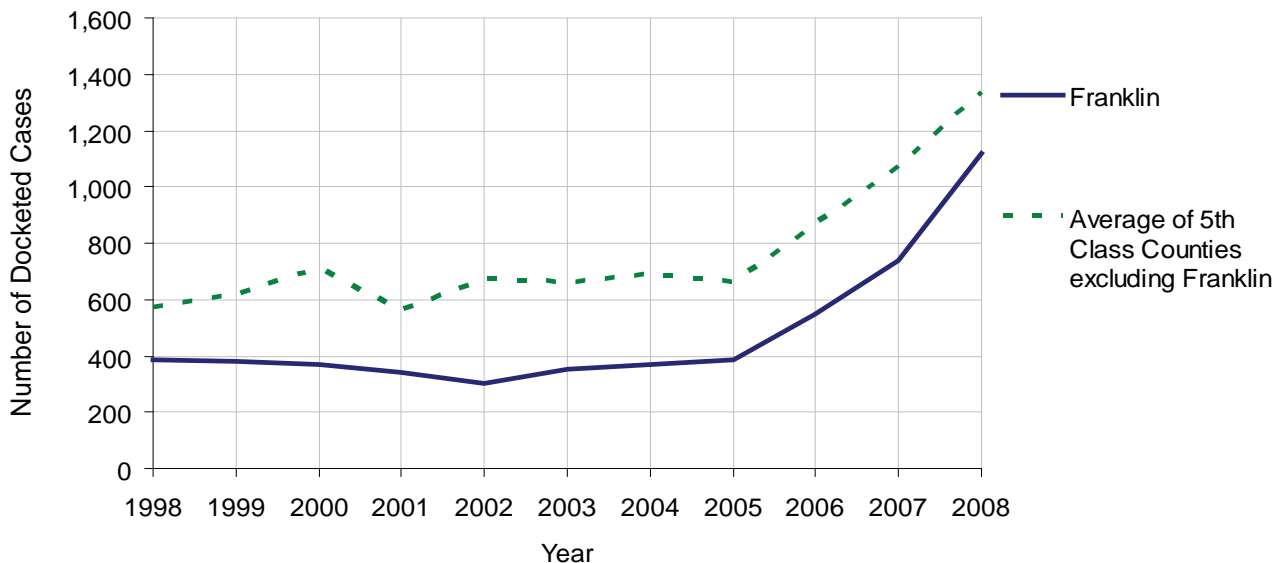
No. of Common Pleas Court Judgeships: 4
(Franklin and Fulton combined)



2008 Civil		Civil Action		
Docketed Cases		1,119		
Arbitrated Cases		31		
Trial-Ready Cases:		Civil Action	Other	Total
Cases Pending 1/1/08		42	0	42
Became Trial Ready in '08		36	0	36
Restored to Trial List		0	0	0
Appeals from Arbitration		0	0	0
Cases Available for Trial		78	0	78
Disposed By:				
Settlement		32	0	32
Non-Jury Trial		0	0	0
Jury Trial		3	0	3
Stricken from Trial List		3	0	3
Other		3	0	3
Cases Disposed		41	0	41
Cases Pending 12/31/08		37	0	37

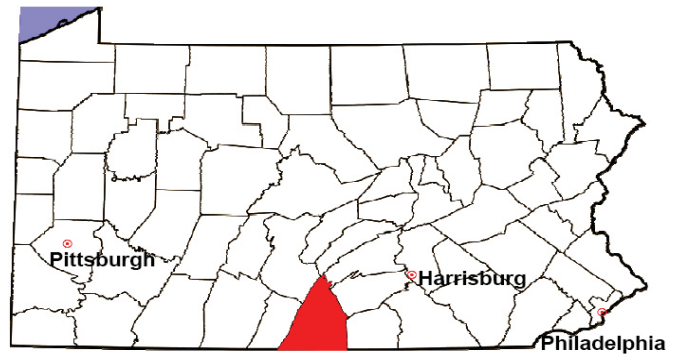
Age of Trial-Ready Cases as of 12/31/08 (Civil Action Only)		
0-6 months	19	51%
7-12 months	8	22%
13-18 months	2	5%
19-24 months	2	5%
25-30 months	1	3%
31-36 months	3	8%
Over 36 months	2	5%
Total	37	100%

Docketed Cases, 1998-2008



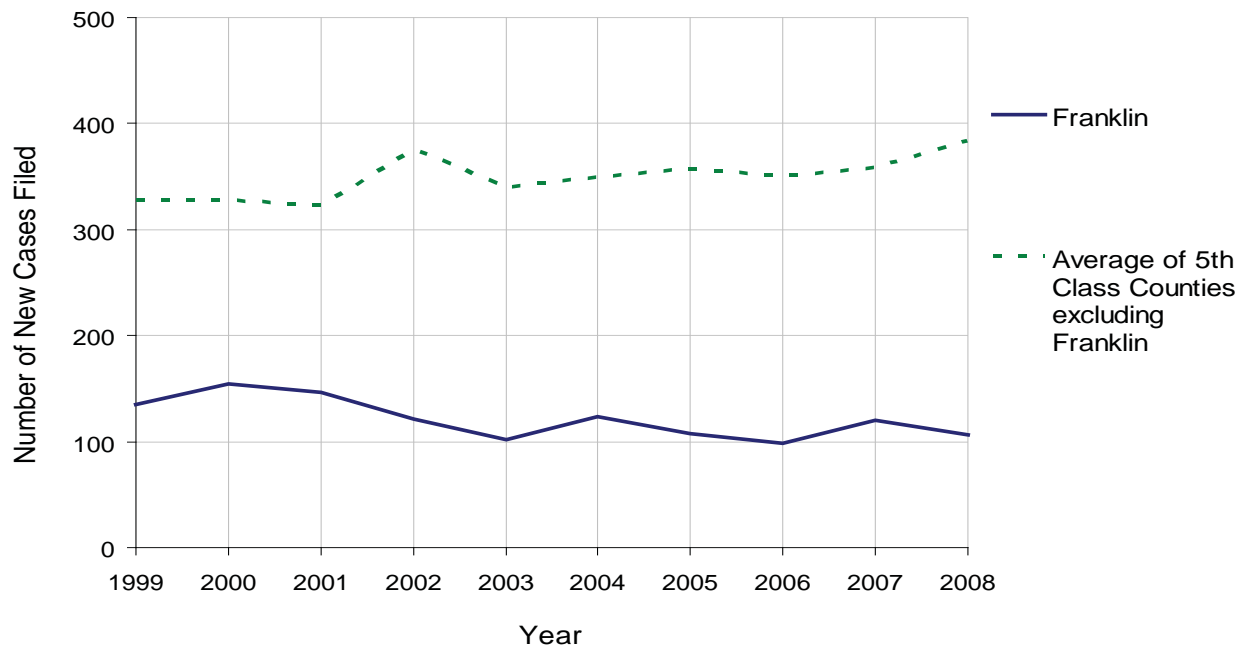
FRANKLIN COUNTY

2008 Population Estimate: 143,495
 Class of County: 5th
 No. of Common Pleas Court Judgeships: 4
 (Franklin and Fulton combined)



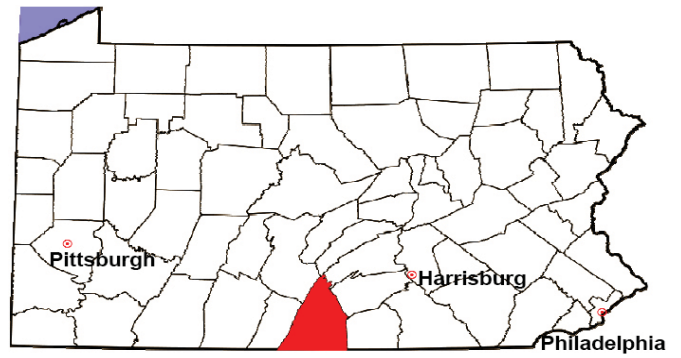
2008 Protection From Abuse	No. of Petitions	%
Cases Pending 1/1/08	177	
New Cases Filed in '08	106	
Cases Available for Processing	283	
Processed By:		
Final Order After Hearing	7	7.4%
Final Order by Stipulation or Agreement	53	55.8%
Dismissal	1	1.1%
Withdrawal	6	6.3%
Other	28	29.5%
Cases Processed	95	100.0%
Cases Pending 12/31/08	188	

PFA New Cases Filed, 1999-2008



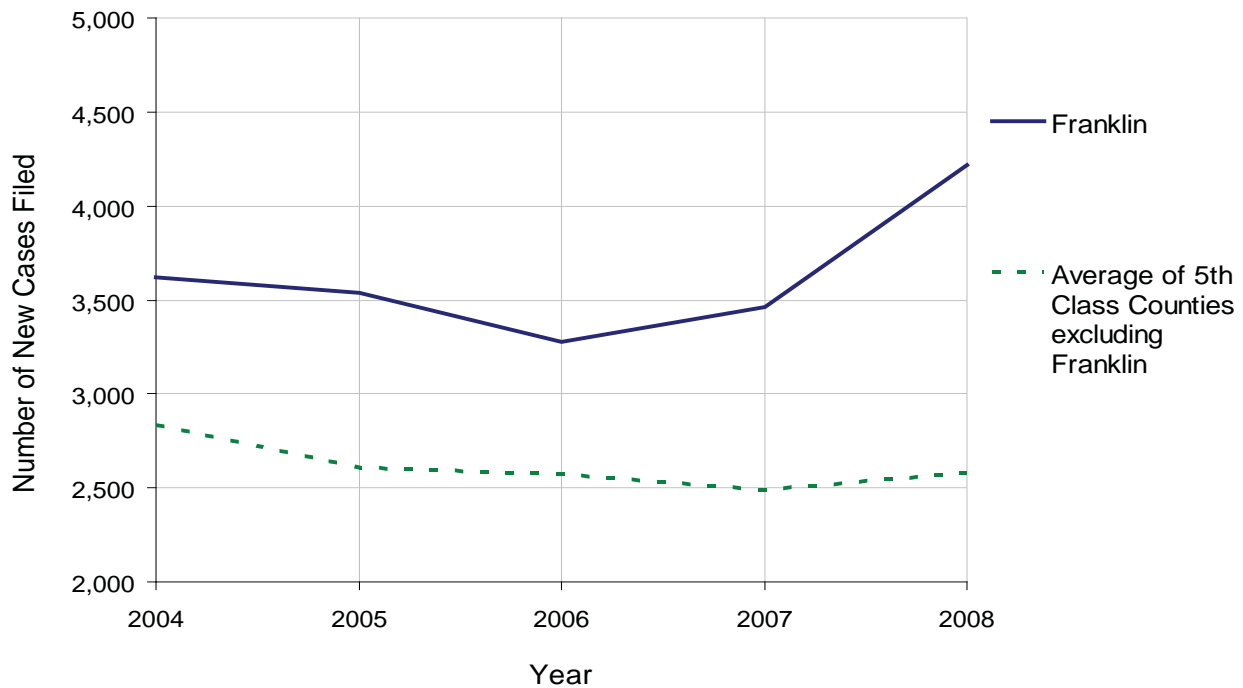
FRANKLIN COUNTY

2008 Population Estimate: 143,495
 Class of County: 5th
 No. of Common Pleas Court Judgeships: 4
 (Franklin and Fulton combined)



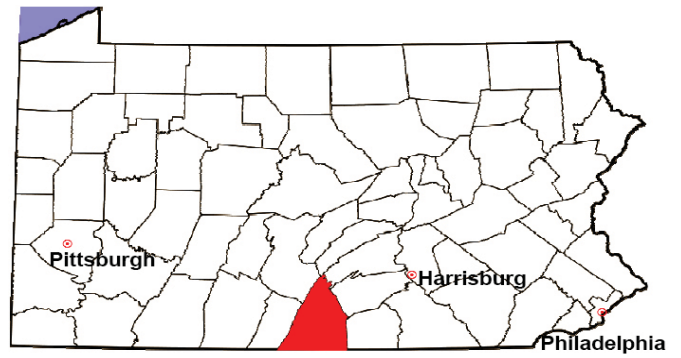
2008 Spousal & Child Support	No. of Petitions	%
Cases Pending 1/1/08	489	
New Cases Filed in '08	4,220	
Dockets Transferred In (+)	28	
Dockets Transferred Out (-)	20	
Cases Available for Processing	4,717	
Processed By:		
Judge	46	1.1%
Intake Officer	4,177	98.9%
Hearing Officer	0	0.0%
Other	0	0.0%
Cases Processed	4,223	100.0%
Cases Pending 12/31/08	494	

Spousal & Child Support New Cases Filed, 1998-2008



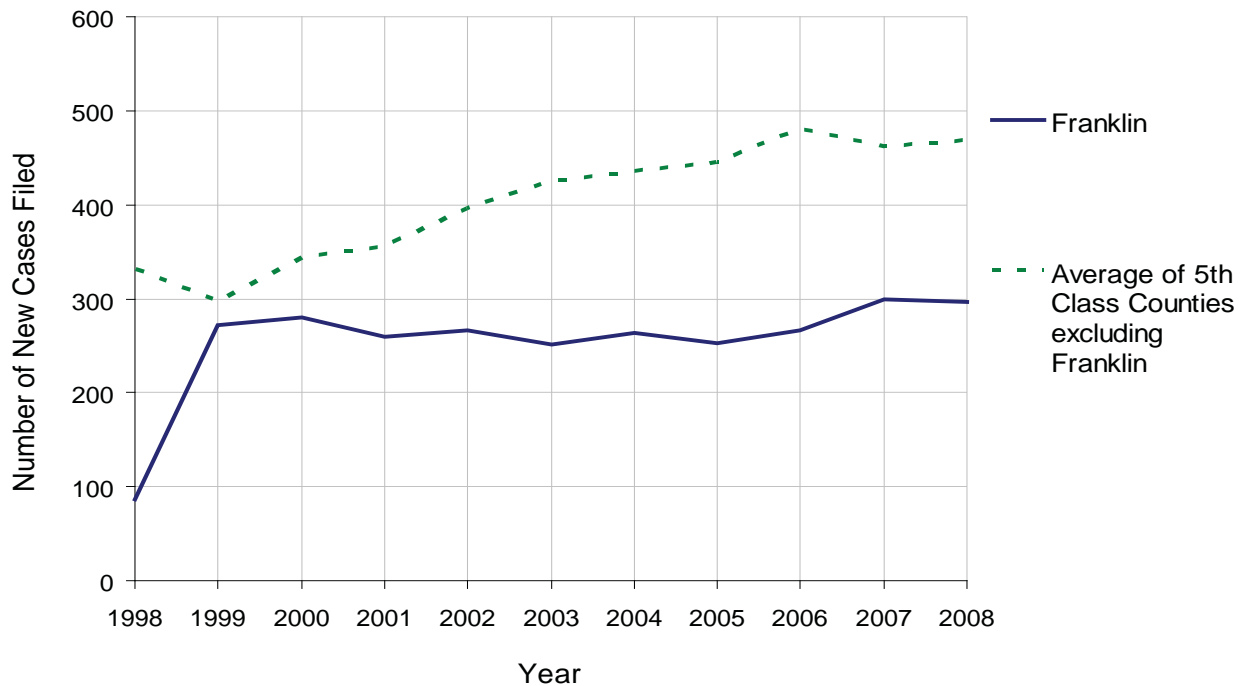
FRANKLIN COUNTY

2008 Population Estimate: 143,495
 Class of County: 5th
 No. of Common Pleas Court Judgeships: 4
 (Franklin and Fulton combined)



2008 Custody/Partial Custody/Visitation	No. of Petitions	%
Cases Pending 1/1/08	2	
New Cases Filed in '08	297	
Cases Available for Processing	299	
Processed By:		
Judge	19	6.5%
Non-Judicial Officer	275	93.5%
Other	0	0.0%
Cases Processed	294	100.0%
Cases Pending 12/31/08	5	

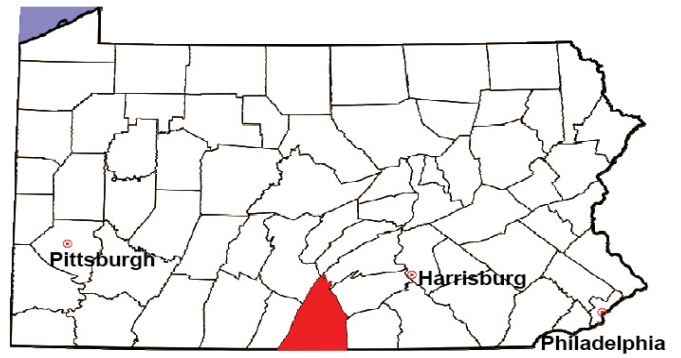
Custody/Partial Custody/Visitation New Cases Filed
 1998-2008



Note: A sharp increase or decrease may reflect changes in practice or counting methods.

FRANKLIN COUNTY

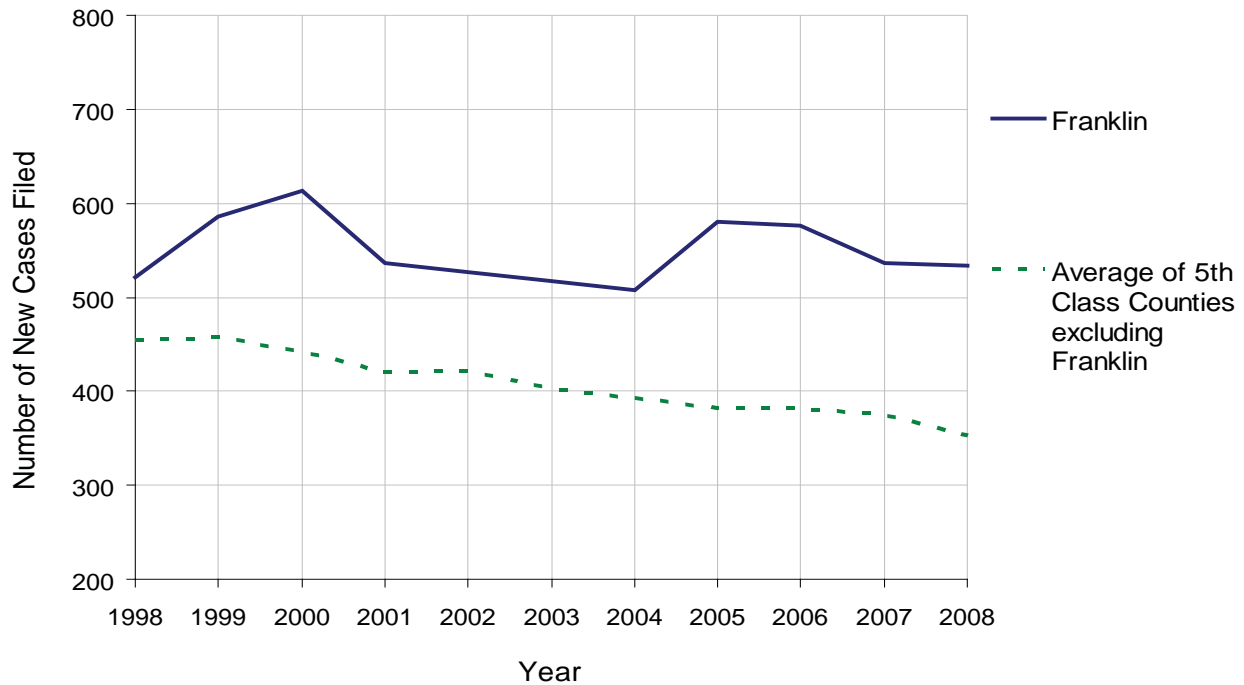
2008 Population Estimate: 143,495
 Class of County: 5th
 No. of Common Pleas Court Judgeships: 4
 (Franklin and Fulton combined)



2008 Divorce	No. of Petitions	%
Cases Pending 1/1/08	545	
New Cases Filed in '08	533	
Cases Available for Processing	1,078	
Processed By:		
Contested Before a Judge	0	0.0%
Contested Before a Master ^(O)	22	4.1%
Uncontested	423	78.5%
Other	94	17.4%
Cases Processed	539	100.0%
Cases Pending 12/31/08	539	

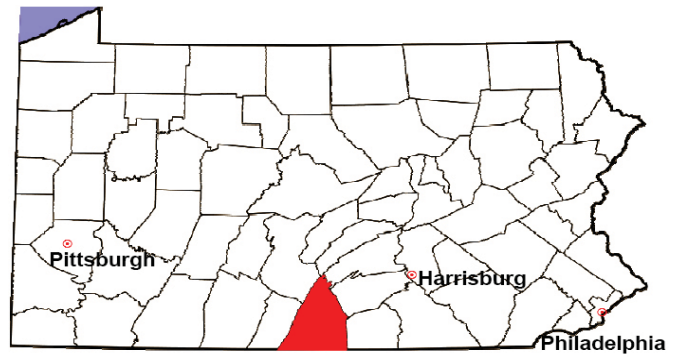
(O) - Overinclusive, includes cases in which a judge held an evidentiary hearing.

Divorce New Cases Filed, 1998-2008



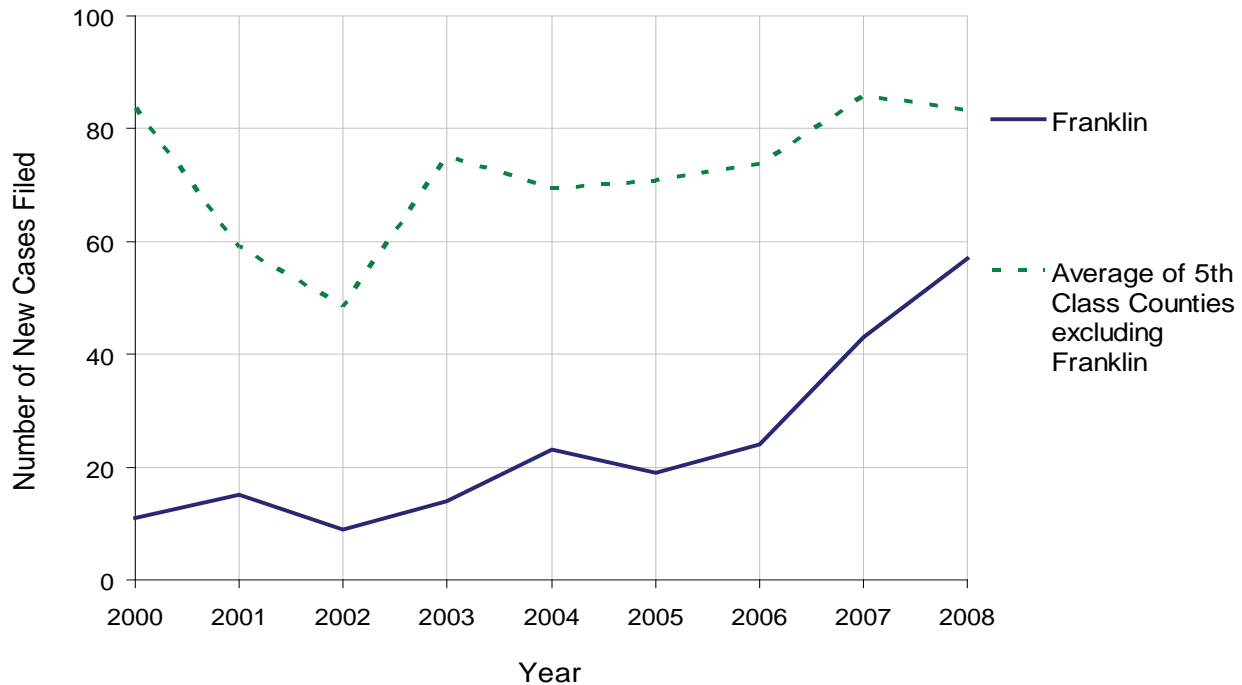
FRANKLIN COUNTY

2008 Population Estimate: 143,495
 Class of County: 5th
 No. of Common Pleas Court Judgeships: 4
 (Franklin and Fulton combined)



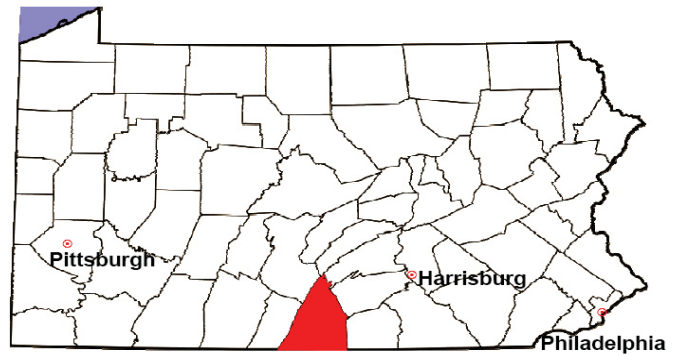
2008 Juvenile Dependency Abuse/Neglect	No. of Petitions	%
Cases Pending 1/1/08	4	
New Cases Filed in '08	57	
Cases Available for Processing	61	
Processed By:		
Judge	37	75.5%
Non-Judicial Officer	0	0.0%
Other	12	24.5%
Cases Processed	49	100.0%
Cases Pending 12/31/08	12	

Abuse/Neglect New Cases Filed, 2000-2008



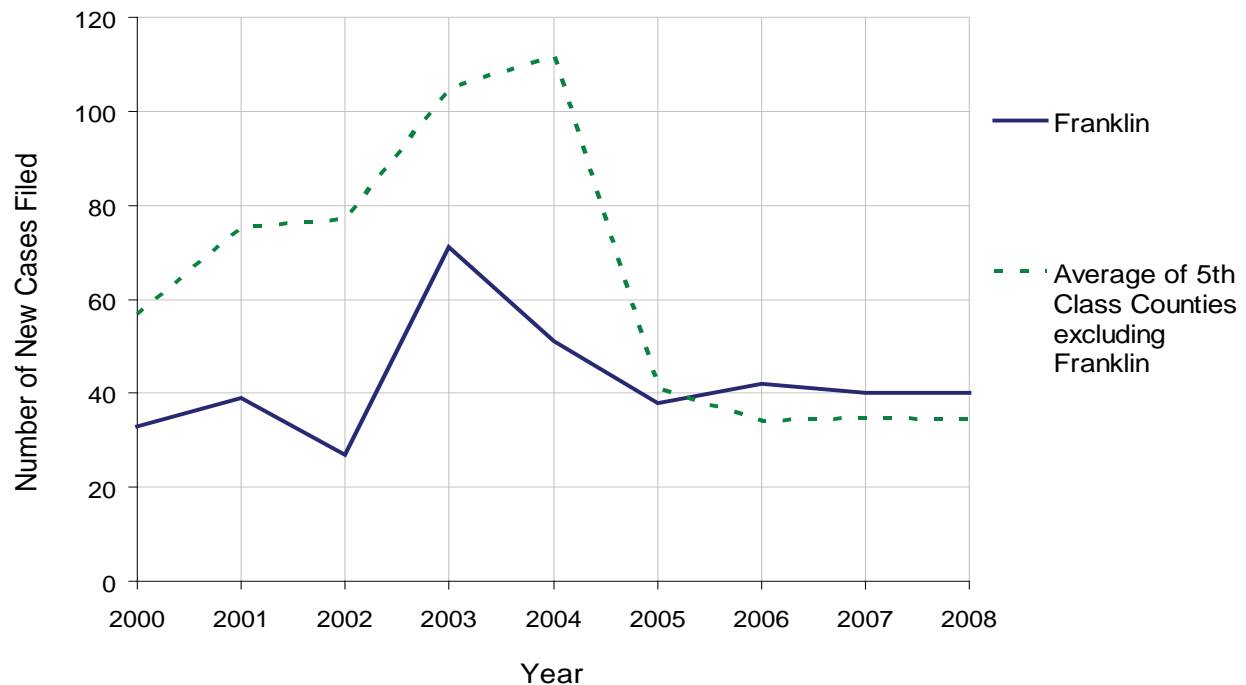
FRANKLIN COUNTY

2008 Population Estimate: 143,495
 Class of County: 5th
 No. of Common Pleas Court Judgeships: 4
 (Franklin and Fulton combined)



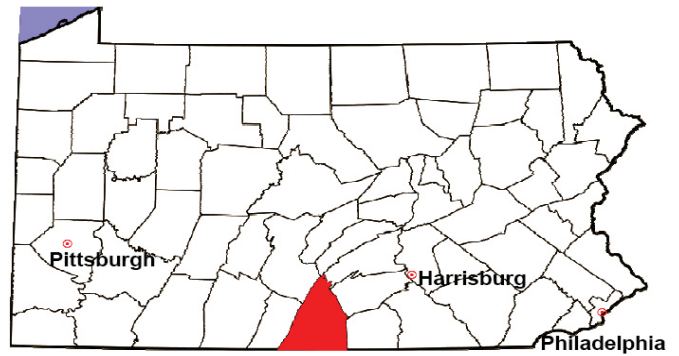
2008 Juvenile Dependency Status Offenses	No. of Petitions	%
Cases Pending 1/1/08	8	
New Cases Filed in '08	40	
Cases Available for Processing	48	
Processed By:		
Judge	28	71.8%
Non-Judicial Officer	1	2.6%
Other	10	25.6%
Cases Processed	39	100.0%
Cases Pending 12/31/08	9	

Status Offenses New Cases Filed, 2000-2008



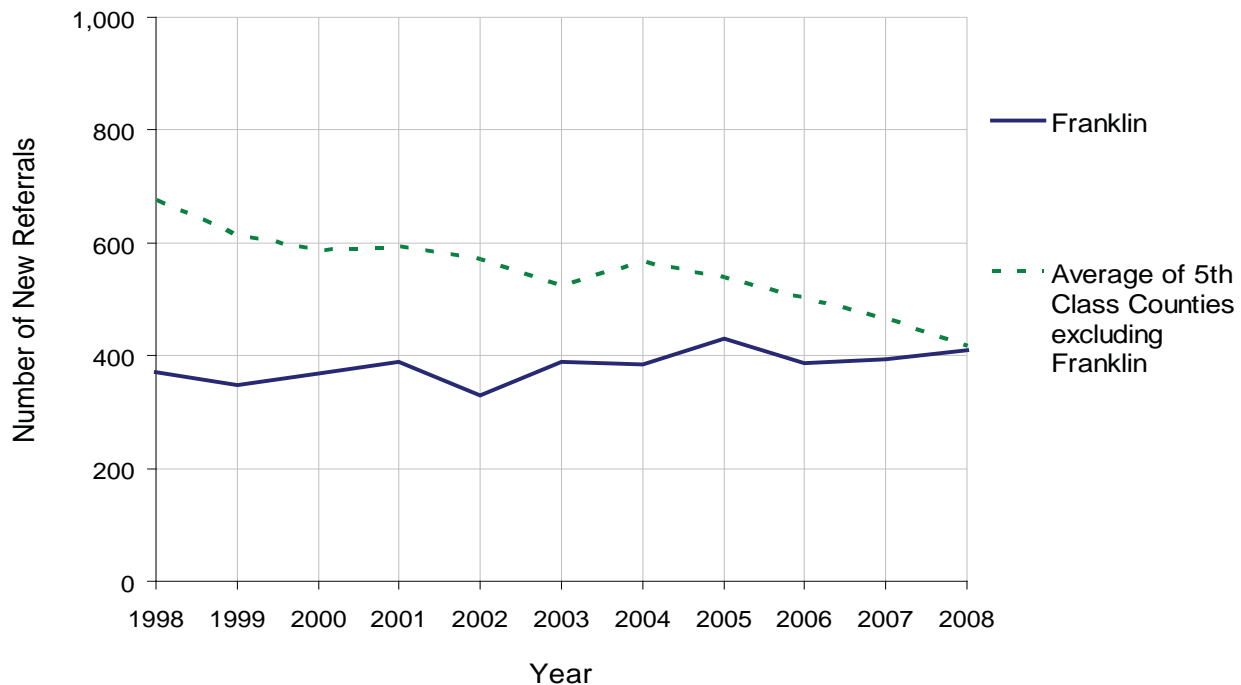
FRANKLIN COUNTY

2008 Population Estimate: 143,495
 Class of County: 5th
 No. of Common Pleas Court Judgeships: 4
 (Franklin and Fulton combined)



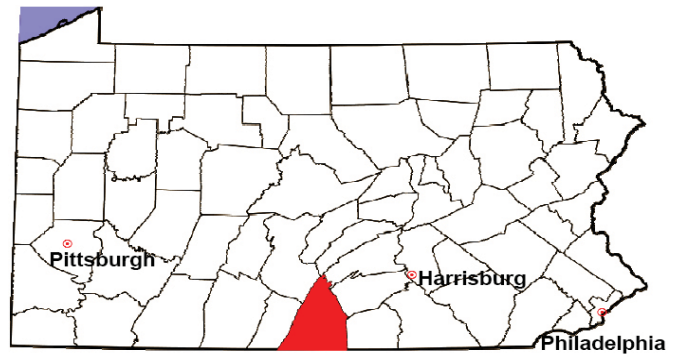
2008 Juvenile Delinquency	No. of Referrals	%
Cases Pending 1/1/08	15	
New Referrals in '08	410	
Cases Available for Processing	425	
Processed By:		
Judge	226	55.4%
Non-Judicial Officer	140	34.3%
Other	42	10.3%
Cases Processed	408	100.0%
Cases Pending 12/31/08	17	

Juvenile Delinquency New Referrals, 1998-2008



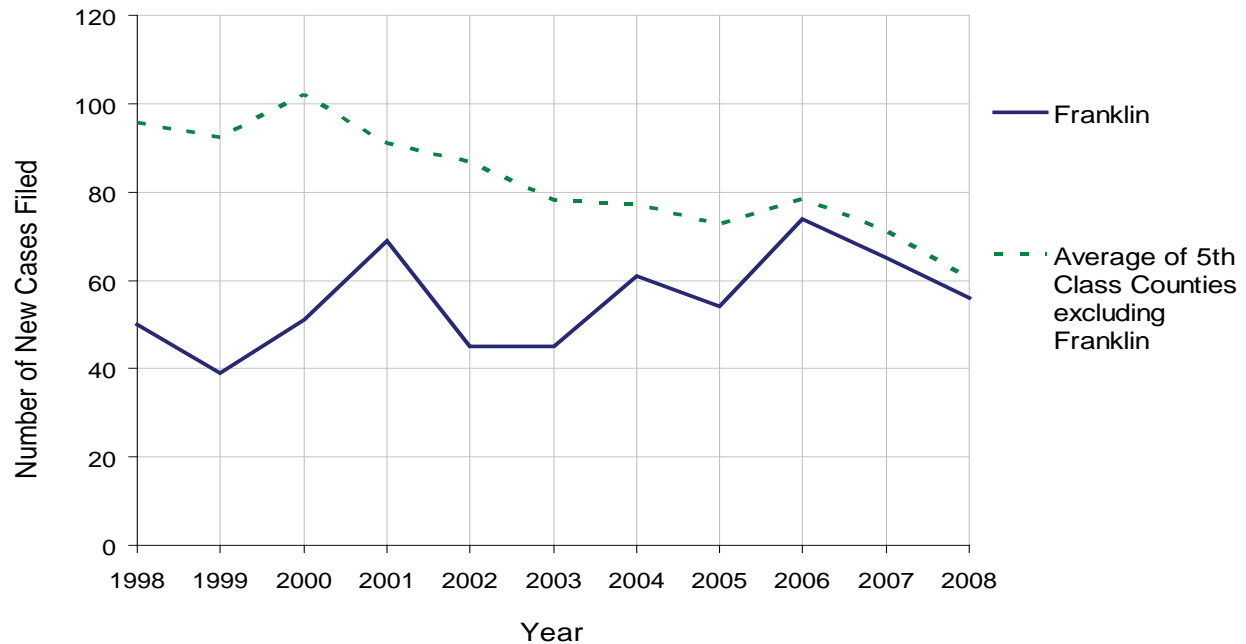
FRANKLIN COUNTY

2008 Population Estimate: 143,495
 Class of County: 5th
 No. of Common Pleas Court Judgeships: 4
 (Franklin and Fulton combined)



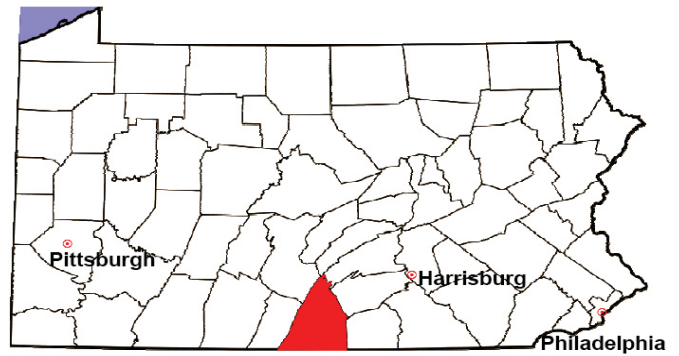
2008 Accounts	No. of Accounts	%
Cases Pending 1/1/08	15	
New Cases Filed in '08	56	
Cases Available for Processing	71	
Processed By:		
Contested before a Judge	0	0.0%
Contested before a Non-Judicial Officer	0	0.0%
Uncontested	51	100.0%
Other	0	0.0%
Cases Processed	51	100.0%
Cases Pending 12/31/08	20	

Accounts New Cases Filed, 1998-2008



FRANKLIN COUNTY

2008 Population Estimate: 143,495
 Class of County: 5th
 No. of Common Pleas Court Judgeships: 4
 (Franklin and Fulton combined)

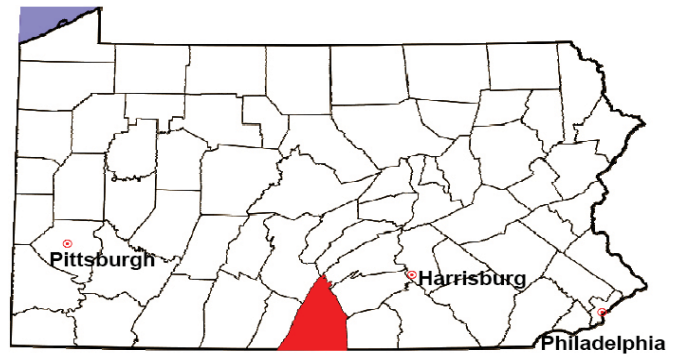


2008 Adoptions		No. of Cases	%
Cases Pending 1/1/08		3	
New Cases Filed in '08		66	
Cases Available for Processing		69	
Processed By:			
Contested before a Judge	Granted	0	0.0%
	Denied	0	0.0%
Uncontested	Granted	54	100.0%
	Denied	0	0.0%
Other		0	0.0%
Cases Processed		54	100.0%
Cases Pending 12/31/08		15	

Note: Prior to 2008, each petition was counted as one new case, regardless of the number of children listed on the petition. Starting in 2008, each child listed on a petition is counted as a separate case. Therefore, statistics for 2008 should not be compared with those for previous years.

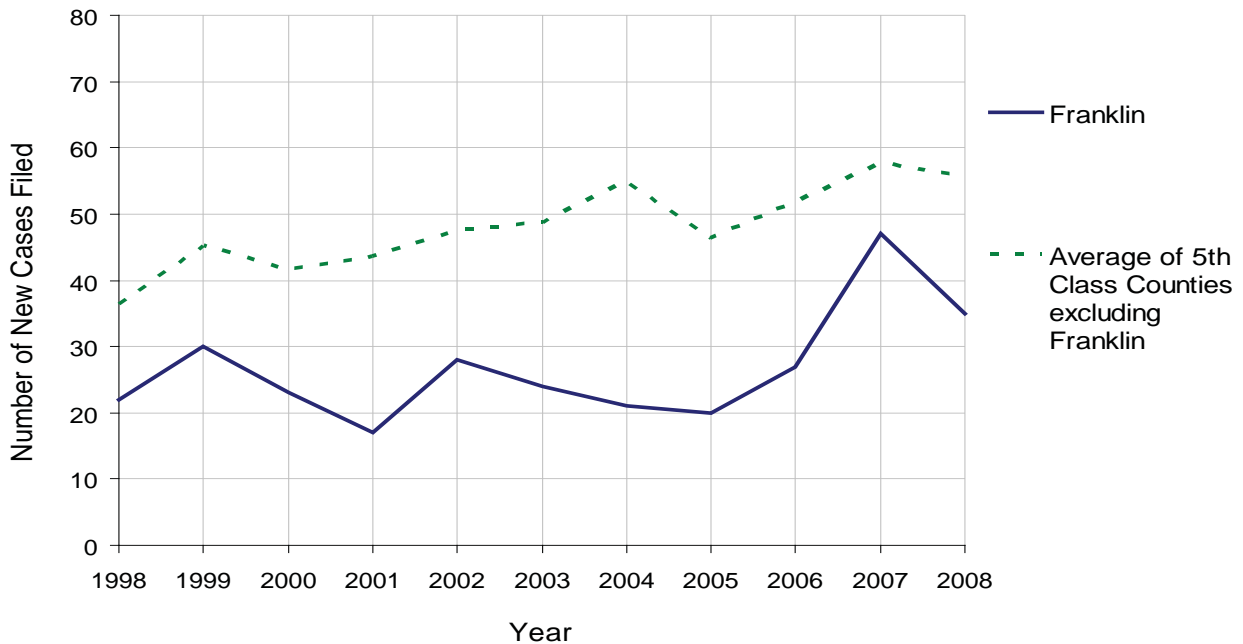
FRANKLIN COUNTY

2008 Population Estimate: 143,495
 Class of County: 5th
 No. of Common Pleas Court Judgeships: 4
 (Franklin and Fulton combined)



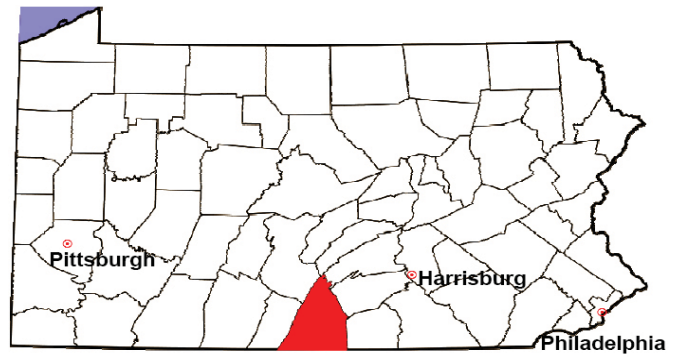
2008 Relinquishments/Terminations	No. of Petitions	%
Cases Pending 1/1/08	6	
New Cases Filed in '08	35	
Cases Available for Processing	41	
Processed By:		
Contested before a Judge	3	7.5%
Uncontested	37	92.5%
Other	0	0.0%
Cases Processed	40	100.0%
Cases Pending 12/31/08	1	

Relinquishments/Terminations New Cases Filed, 1998-2008



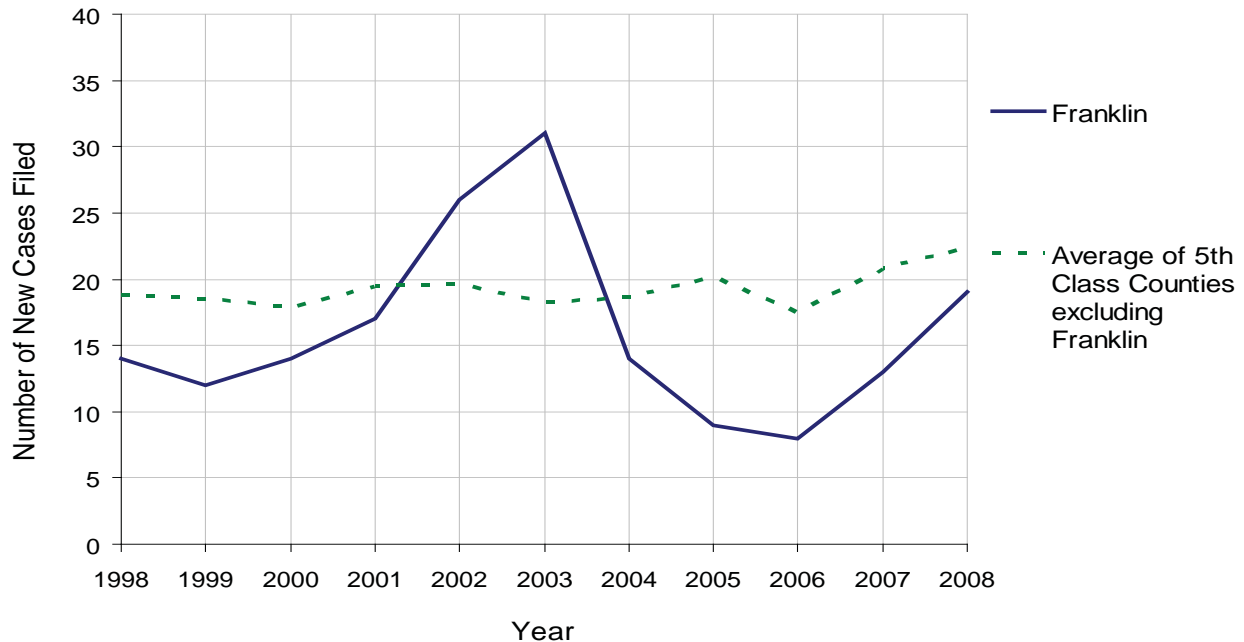
FRANKLIN COUNTY

2008 Population Estimate: 143,495
 Class of County: 5th
 No. of Common Pleas Court Judgeships: 4
 (Franklin and Fulton combined)



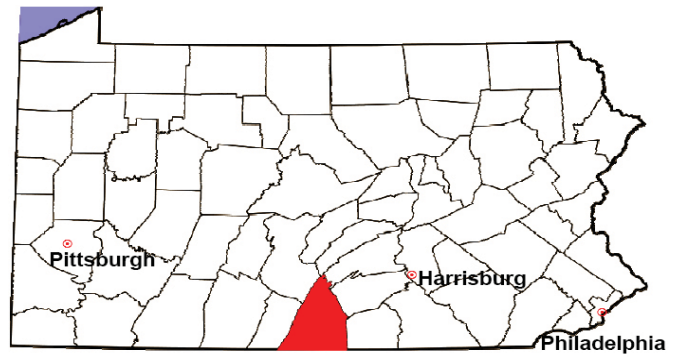
2008 Appointment of Guardians	No. of Petitions	%
Cases Pending 1/1/08	13	
New Cases Filed in '08	19	
Cases Available for Processing	32	
Processed By:		
Contested before a Judge	0	0.0%
Uncontested	15	68.2%
Other	7	31.8%
Cases Processed	22	100.0%
Cases Pending 12/31/08	10	

Appointment of Guardians New Cases Filed, 1998-2008



FRANKLIN COUNTY

2008 Population Estimate: 143,495
 Class of County: 5th
 No. of Common Pleas Court Judgeships: 4
 (Franklin and Fulton combined)



2008 Jury Activity & Performance Measures		
A. Juror Days		1,073
B. Number Sent to Voir Dire		2,293
	Voir Dire Attendance Rate $(B/A * 100)$	213.7%
C. Number of Voir Dires Started		37
	Juror Days Per Voir Dire Starts (A/C)	29
D. Number of Jurors Selected		518
	Juror Selection Rate $(D/B * 100)$	22.6%
E. Number of Jury Trials Started		19
	Juror Days Per Trial Starts (A/E)	56
	Number of Voir Dires Not Resulting in Trial $(C-E)$	18
	Percent Voir Dires Not Resulting in Trial $(C-E)/C * 100$	48.6%
F. Pool Days		6
G. Zero Panel Days		0
	Percent Zero Panel Days $(G/F * 100)$	0.0%
H. Total Juror Fees Incurred		\$21,122
	Average Juror Fees Per Trial (H/E)	\$1,112

Average Juror Fees Per Trial, 1998-2008

