

# BERKS COUNTY

2008 Population Estimate: 403,595

Class of County: 3rd

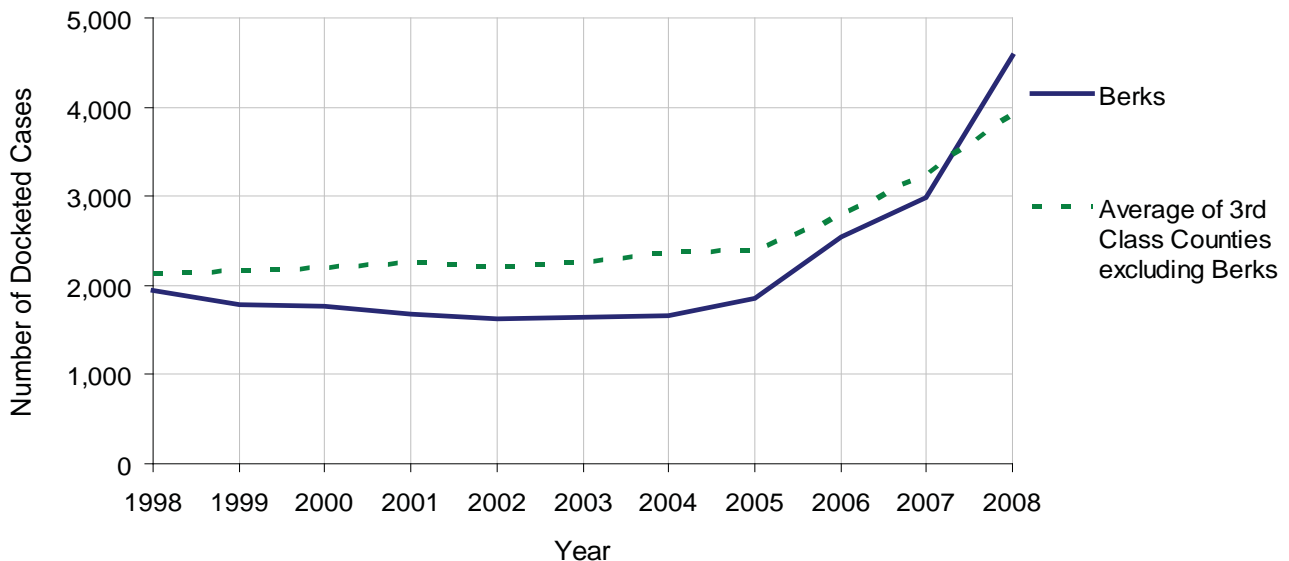
No. of Common Pleas Court Judgeships: 13



| 2008 Civil                       |  | Civil Action |            |            |
|----------------------------------|--|--------------|------------|------------|
| Docketed Cases                   |  | 4,575        |            |            |
| Arbitrated Cases                 |  | 174          |            |            |
| Trial-Ready Cases:               |  | Civil Action | Other      | Total      |
| Cases Pending 1/1/08             |  | 59           | 36         | 95         |
| Became Trial Ready in '08        |  | 107          | 261        | 368        |
| Restored to Trial List           |  | 3            | 0          | 3          |
| Appeals from Arbitration         |  | 26           | 0          | 26         |
| <b>Cases Available for Trial</b> |  | <b>195</b>   | <b>297</b> | <b>492</b> |
| Disposed By:                     |  |              |            |            |
| Settlement                       |  | 24           | 265        | 289        |
| Non-Jury Trial                   |  | 10           | 3          | 13         |
| Jury Trial                       |  | 22           | 0          | 22         |
| Stricken from Trial List         |  | 74           | 4          | 78         |
| Other                            |  | 17           | 2          | 19         |
| <b>Cases Disposed</b>            |  | <b>147</b>   | <b>274</b> | <b>421</b> |
| <b>Cases Pending 12/31/08</b>    |  | <b>48</b>    | <b>23</b>  | <b>71</b>  |

| Age of Trial-Ready Cases as of 12/31/08 (Civil Action Only) |           |             |
|-------------------------------------------------------------|-----------|-------------|
| 0-6 months                                                  | 37        | 77%         |
| 7-12 months                                                 | 11        | 23%         |
| 13-18 months                                                | 0         | 0%          |
| 19-24 months                                                | 0         | 0%          |
| 25-30 months                                                | 0         | 0%          |
| 31-36 months                                                | 0         | 0%          |
| Over 36 months                                              | 0         | 0%          |
| <b>Total</b>                                                | <b>48</b> | <b>100%</b> |

Docketed Cases, 1998-2008



# BERKS COUNTY

2008 Population Estimate: 403,595

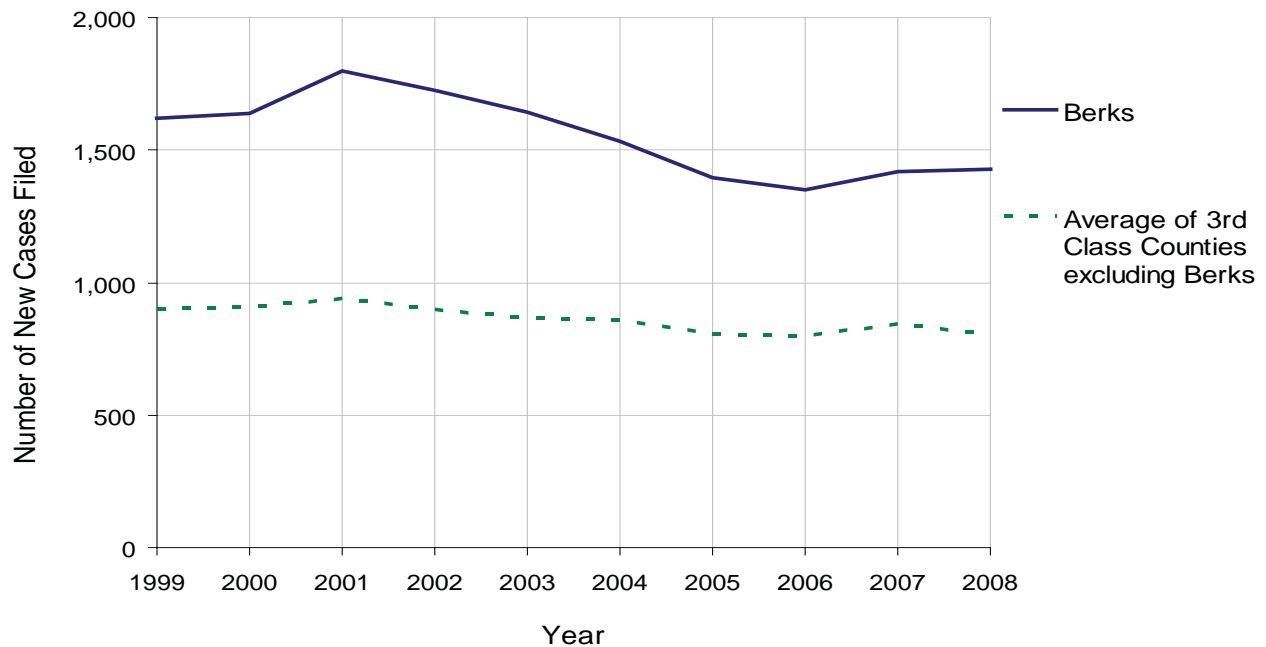
Class of County: 3rd

No. of Common Pleas Court Judgeships: 13



| <b>2008 Protection From Abuse</b>       | No. of Petitions | %             |
|-----------------------------------------|------------------|---------------|
| Cases Pending 1/1/08                    | 158              |               |
| New Cases Filed in '08                  | 1,427            |               |
| <b>Cases Available for Processing</b>   | <b>1,585</b>     |               |
| Processed By:                           |                  |               |
| Final Order After Hearing               | 181              | 12.3%         |
| Final Order by Stipulation or Agreement | 409              | 27.9%         |
| Dismissal                               | 363              | 24.7%         |
| Withdrawal                              | 498              | 33.9%         |
| Other                                   | 17               | 1.2%          |
| <b>Cases Processed</b>                  | <b>1,468</b>     | <b>100.0%</b> |
| <b>Cases Pending 12/31/08</b>           | <b>117</b>       |               |

PFA New Cases Filed, 1999-2008



# BERKS COUNTY

2008 Population Estimate: 403,595

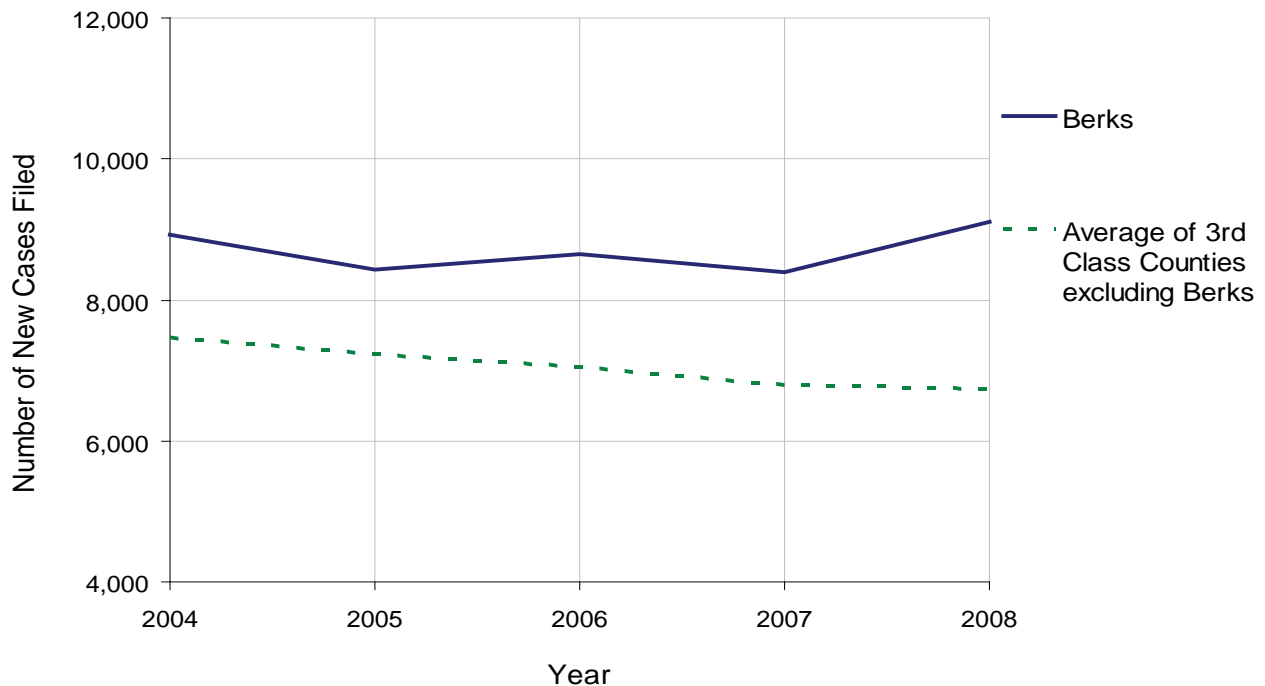
Class of County: 3rd

No. of Common Pleas Court Judgeships: 13



| <b>2008 Spousal &amp; Child Support</b> | No. of Petitions | %             |
|-----------------------------------------|------------------|---------------|
| Cases Pending 1/1/08                    | 3,052            |               |
| New Cases Filed in '08                  | 9,099            |               |
| Dockets Transferred In (+)              | 111              |               |
| Dockets Transferred Out (-)             | 143              |               |
| <b>Cases Available for Processing</b>   | <b>12,119</b>    |               |
| Processed By:                           |                  |               |
| Judge                                   | 138              | 1.5%          |
| Intake Officer                          | 8,505            | 94.1%         |
| Hearing Officer                         | 388              | 4.3%          |
| Other                                   | 12               | 0.1%          |
| <b>Cases Processed</b>                  | <b>9,043</b>     | <b>100.0%</b> |
| <b>Cases Pending 12/31/08</b>           | <b>3,076</b>     |               |

Spousal & Child Support New Cases Filed, 1998-2008



# BERKS COUNTY

2008 Population Estimate: 403,595

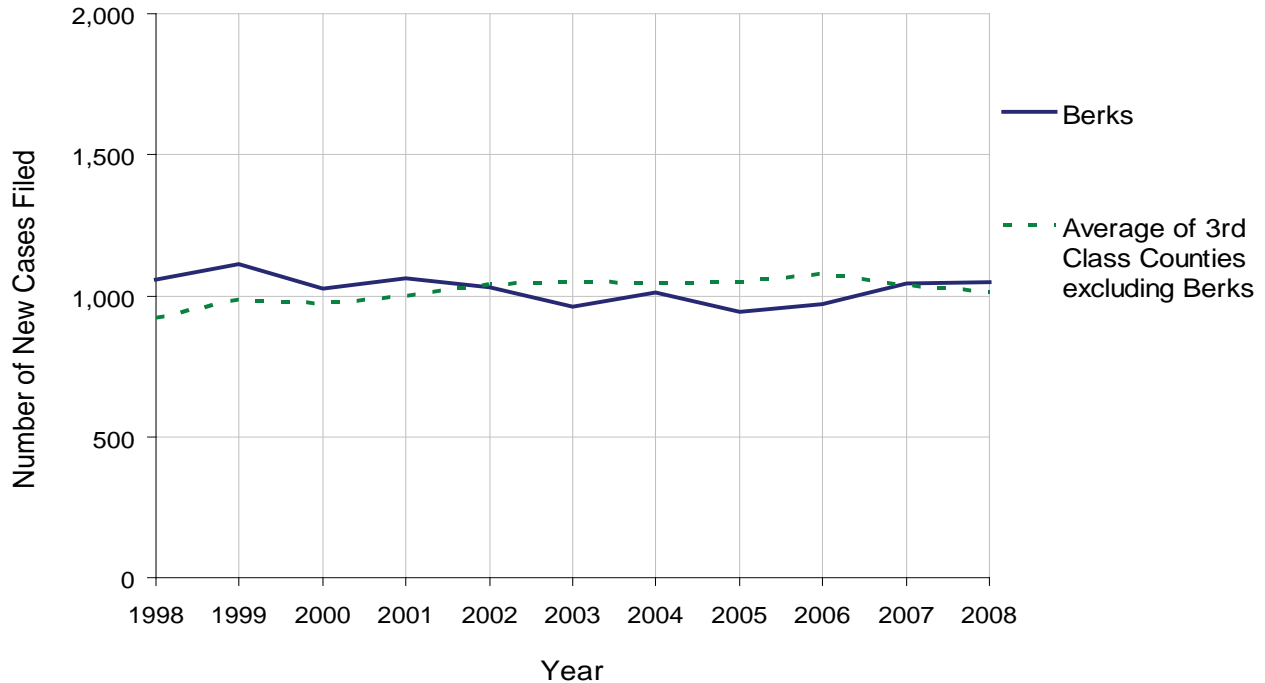
Class of County: 3rd

No. of Common Pleas Court Judgeships: 13



| <b>2008 Custody/Partial Custody/Visitation</b> | No. of Petitions | %             |
|------------------------------------------------|------------------|---------------|
| Cases Pending 1/1/08                           | 411              |               |
| New Cases Filed in '08                         | 1,046            |               |
| <b>Cases Available for Processing</b>          | <b>1,457</b>     |               |
| Processed By:                                  |                  |               |
| Judge                                          | 578              | 58.0%         |
| Non-Judicial Officer                           | 297              | 29.8%         |
| Other                                          | 122              | 12.2%         |
| <b>Cases Processed</b>                         | <b>997</b>       | <b>100.0%</b> |
| <b>Cases Pending 12/31/08</b>                  | <b>460</b>       |               |

Custody/Partial Custody/Visitation New Cases Filed  
1998-2008



# BERKS COUNTY

2008 Population Estimate: 403,595

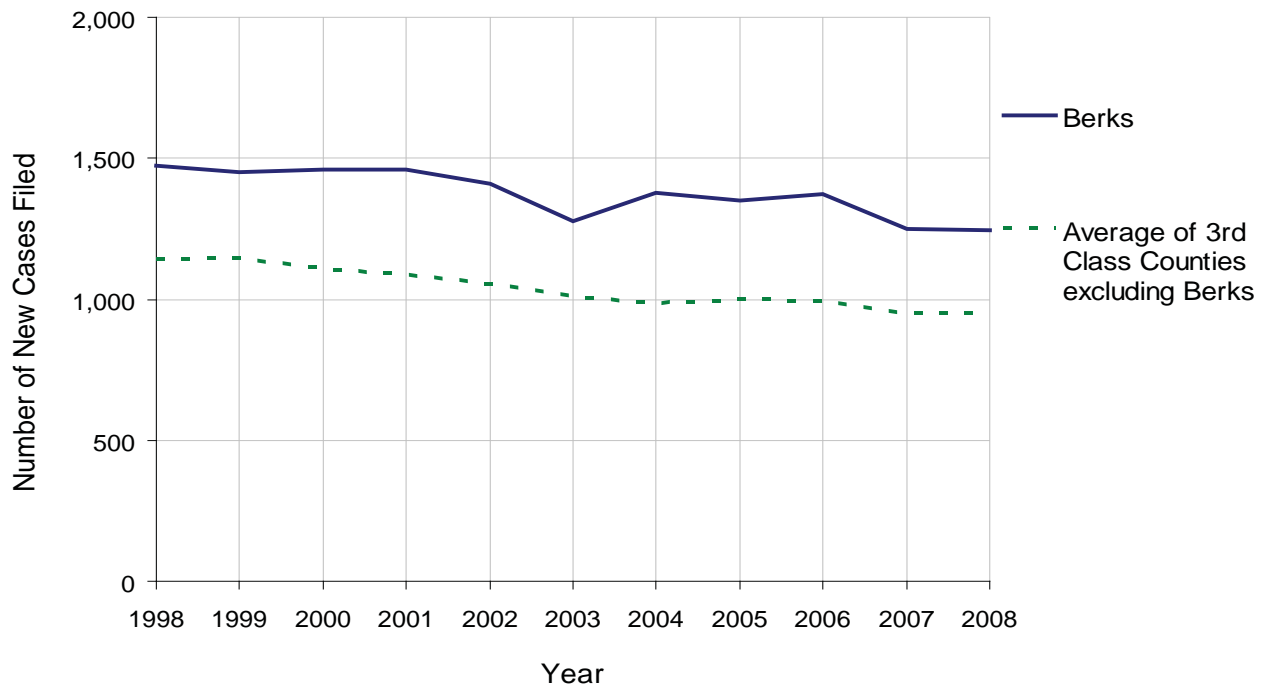
Class of County: 3rd

No. of Common Pleas Court Judgeships: 13



| <b>2008 Divorce</b>                   | No. of Petitions | %             |
|---------------------------------------|------------------|---------------|
| Cases Pending 1/1/08                  | 2,555            |               |
| New Cases Filed in '08                | 1,247            |               |
| <b>Cases Available for Processing</b> | <b>3,802</b>     |               |
| Processed By:                         |                  |               |
| Contested Before a Judge              | 25               | 2.0%          |
| Contested Before a Master             | 105              | 8.5%          |
| Uncontested                           | 911              | 73.5%         |
| Other                                 | 199              | 16.0%         |
| <b>Cases Processed</b>                | <b>1,240</b>     | <b>100.0%</b> |
| <b>Cases Pending 12/31/08</b>         | <b>2,562</b>     |               |

Divorce New Cases Filed, 1998-2008



# BERKS COUNTY

2008 Population Estimate: 403,595

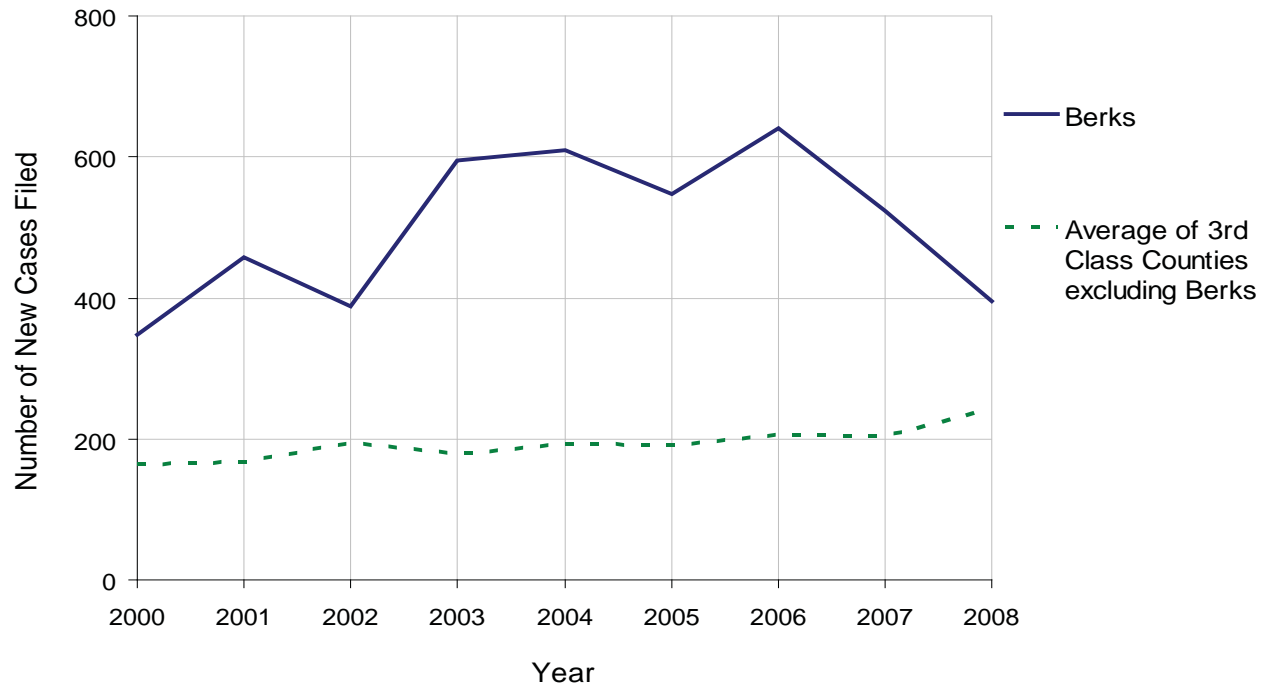
Class of County: 3rd

No. of Common Pleas Court Judgeships: 13



| 2008 Juvenile Dependency Abuse/Neglect | No. of Petitions | %             |
|----------------------------------------|------------------|---------------|
| Cases Pending 1/1/08                   | 11               |               |
| New Cases Filed in '08                 | 395              |               |
| <b>Cases Available for Processing</b>  | <b>406</b>       |               |
| Processed By:                          |                  |               |
| Judge                                  | 323              | 81.6%         |
| Non-Judicial Officer                   | 0                | 0.0%          |
| Other                                  | 73               | 18.4%         |
| <b>Cases Processed</b>                 | <b>396</b>       | <b>100.0%</b> |
| <b>Cases Pending 12/31/08</b>          | <b>10</b>        |               |

Abuse/Neglect New Cases Filed, 2000-2008



# BERKS COUNTY

2008 Population Estimate: 403,595

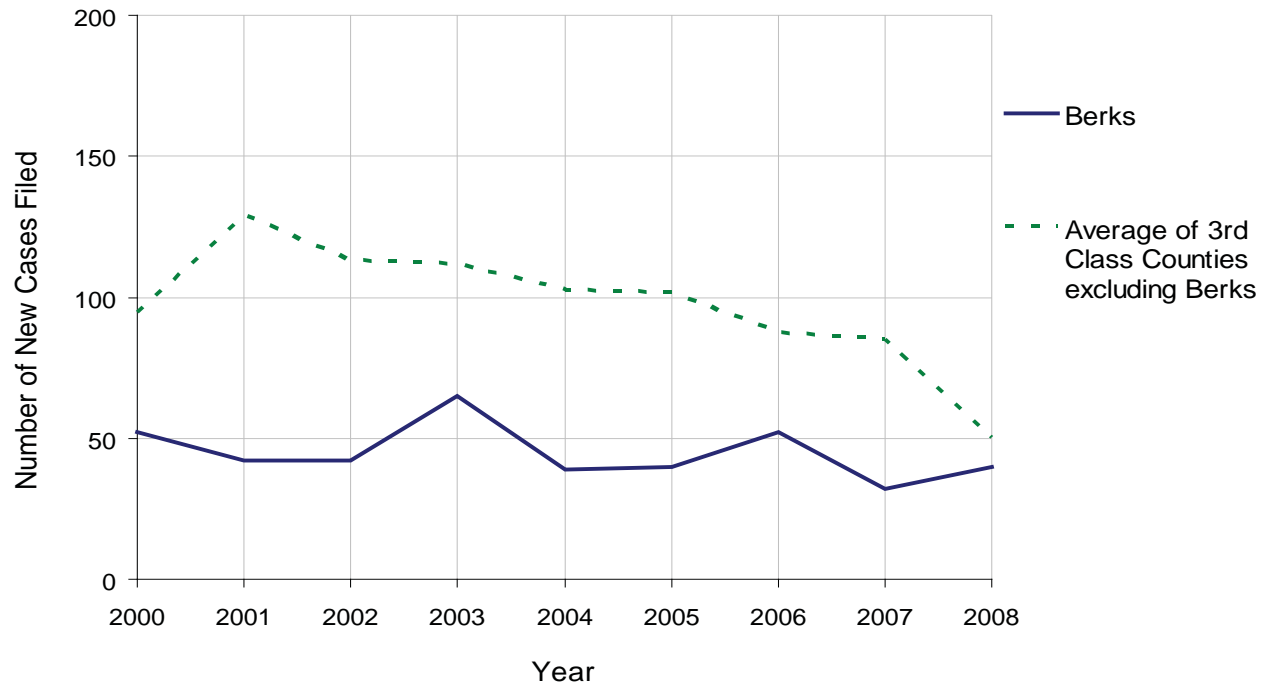
Class of County: 3rd

No. of Common Pleas Court Judgeships: 13



| <b>2008 Juvenile Dependency Status Offenses</b> | No. of Petitions | %             |
|-------------------------------------------------|------------------|---------------|
| Cases Pending 1/1/08                            | 11               |               |
| New Cases Filed in '08                          | 40               |               |
| <b>Cases Available for Processing</b>           | <b>51</b>        |               |
| Processed By:                                   |                  |               |
| Judge                                           | 30               | 75.0%         |
| Non-Judicial Officer                            | 0                | 0.0%          |
| Other                                           | 10               | 25.0%         |
| <b>Cases Processed</b>                          | <b>40</b>        | <b>100.0%</b> |
| <b>Cases Pending 12/31/08</b>                   | <b>11</b>        |               |

Status Offenses New Cases Filed, 2000-2008



# BERKS COUNTY

2008 Population Estimate: 403,595

Class of County: 3rd

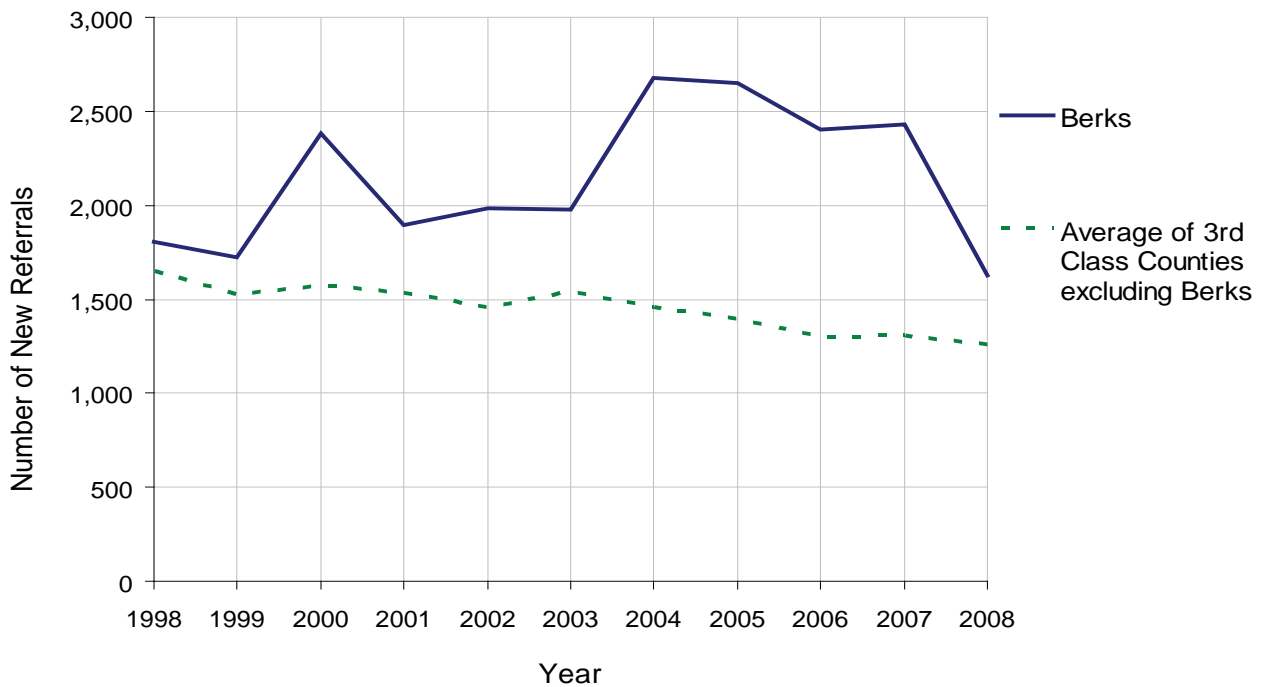
No. of Common Pleas Court Judgeships: 13



| 2008 Juvenile Delinquency             | No. of Referrals   | %             |
|---------------------------------------|--------------------|---------------|
| Cases Pending 1/1/08                  | 367 <sup>(R)</sup> |               |
| New Referrals in '08                  | 1,630              |               |
| <b>Cases Available for Processing</b> | <b>1,997</b>       |               |
| Processed By:                         |                    |               |
| Judge                                 | 1,014              | 65.4%         |
| Non-Judicial Officer                  | 505                | 32.6%         |
| Other                                 | 31                 | 2.0%          |
| <b>Cases Processed</b>                | <b>1,550</b>       | <b>100.0%</b> |
| <b>Cases Pending 12/31/08</b>         | <b>447</b>         |               |

(R) - Revised

Juvenile Delinquency New Referrals, 1998-2008



# BERKS COUNTY

2008 Population Estimate: 403,595

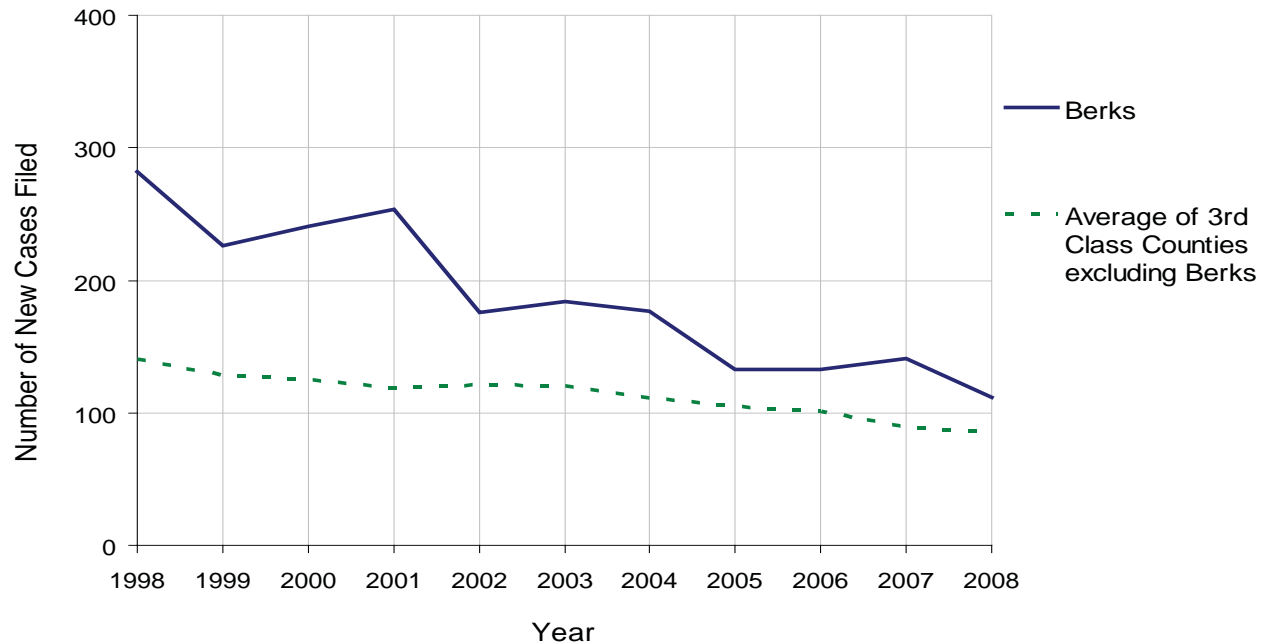
Class of County: 3rd

No. of Common Pleas Court Judgeships: 13



| 2008 Accounts                           | No. of Accounts | %             |
|-----------------------------------------|-----------------|---------------|
| Cases Pending 1/1/08                    | 43              |               |
| New Cases Filed in '08                  | 112             |               |
| <b>Cases Available for Processing</b>   | <b>155</b>      |               |
| Processed By:                           |                 |               |
| Contested before a Judge                | 4               | 3.6%          |
| Contested before a Non-Judicial Officer | 0               | 0.0%          |
| Uncontested                             | 107             | 96.4%         |
| Other                                   | 0               | 0.0%          |
| <b>Cases Processed</b>                  | <b>111</b>      | <b>100.0%</b> |
| <b>Cases Pending 12/31/08</b>           | <b>44</b>       |               |

Accounts New Cases Filed, 1998-2008



# BERKS COUNTY

2008 Population Estimate: 403,595

Class of County: 3rd

No. of Common Pleas Court Judgeships: 13



| <b>2008 Adoptions</b>                 |         | No. of Cases | %             |
|---------------------------------------|---------|--------------|---------------|
| Cases Pending 1/1/08                  |         | 21           |               |
| New Cases Filed in '08                |         | 230          |               |
| <b>Cases Available for Processing</b> |         | <b>251</b>   |               |
| Processed By:                         |         |              |               |
| Contested before a Judge              | Granted | 0            | 0.0%          |
|                                       | Denied  | 0            | 0.0%          |
| Uncontested                           | Granted | 216          | 96.9%         |
|                                       | Denied  | 1            | 0.4%          |
| Other                                 |         | 6            | 2.7%          |
| <b>Cases Processed</b>                |         | <b>223</b>   | <b>100.0%</b> |
| <b>Cases Pending 12/31/08</b>         |         | <b>28</b>    |               |

Note: Prior to 2008, each petition was counted as one new case, regardless of the number of children listed on the petition. Starting in 2008, each child listed on a petition is counted as a separate case. Therefore, statistics for 2008 should not be compared with those for previous years.

# BERKS COUNTY

2008 Population Estimate: 403,595

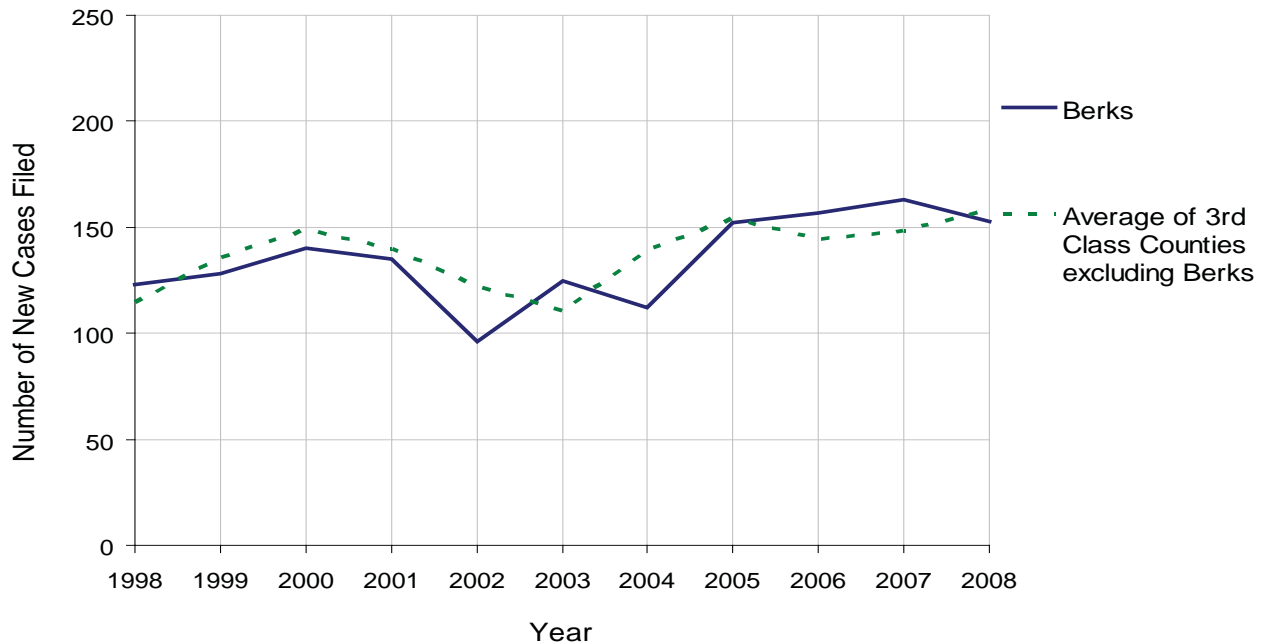
Class of County: 3rd

No. of Common Pleas Court Judgeships: 13



| <b>2008 Relinquishments/Terminations</b> | No. of Petitions | %             |
|------------------------------------------|------------------|---------------|
| Cases Pending 1/1/08                     | 24               |               |
| New Cases Filed in '08                   | 153              |               |
| <b>Cases Available for Processing</b>    | <b>177</b>       |               |
| Processed By:                            |                  |               |
| Contested before a Judge                 | 33               | 22.1%         |
| Uncontested                              | 114              | 76.5%         |
| Other                                    | 2                | 1.3%          |
| <b>Cases Processed</b>                   | <b>149</b>       | <b>100.0%</b> |
| <b>Cases Pending 12/31/08</b>            | <b>28</b>        |               |

Relinquishments/Terminations New Cases Filed, 1998-2008



# BERKS COUNTY

2008 Population Estimate: 403,595

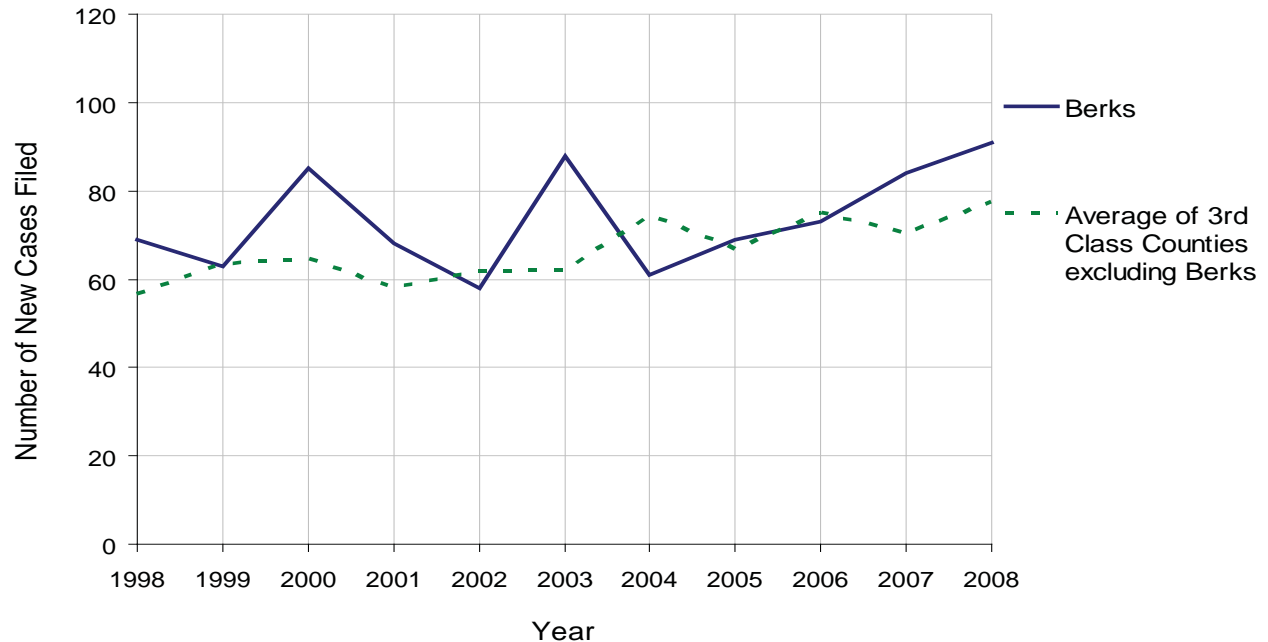
Class of County: 3rd

No. of Common Pleas Court Judgeships: 13



| 2008 Appointment of Guardians         | No. of Petitions | %             |
|---------------------------------------|------------------|---------------|
| Cases Pending 1/1/08                  | 8                |               |
| New Cases Filed in '08                | 91               |               |
| <b>Cases Available for Processing</b> | <b>99</b>        |               |
| Processed By:                         |                  |               |
| Contested before a Judge              | 2                | 2.5%          |
| Uncontested                           | 71               | 88.8%         |
| Other                                 | 7                | 8.8%          |
| <b>Cases Processed</b>                | <b>80</b>        | <b>100.0%</b> |
| <b>Cases Pending 12/31/08</b>         | <b>19</b>        |               |

Appointment of Guardians New Cases Filed, 1998-2008



# BERKS COUNTY

2008 Population Estimate: 403,595

Class of County: 3rd

No. of Common Pleas Court Judgeships: 13



## 2008 Jury Activity & Performance Measures

|                                                           |           |
|-----------------------------------------------------------|-----------|
| A. Juror Days                                             | 9,162     |
| B. Number Sent to Voir Dire                               | 7,632     |
| Voir Dire Attendance Rate $(B/A * 100)$                   | 83.3%     |
| C. Number of Voir Dires Started                           | 176       |
| Juror Days Per Voir Dire Starts $(A/C)$                   | 52        |
| D. Number of Jurors Selected                              | 2,409     |
| Juror Selection Rate $(D/B * 100)$                        | 31.6%     |
| E. Number of Jury Trials Started                          | 166       |
| Juror Days Per Trial Starts $(A/E)$                       | 55        |
| Number of Voir Dires Not Resulting in Trial $(C-E)$       | 10        |
| Percent Voir Dires Not Resulting in Trial $(C-E)/C * 100$ | 5.7%      |
| F. Pool Days                                              | 131       |
| G. Zero Panel Days                                        | 12        |
| Percent Zero Panel Days $(G/F * 100)$                     | 9.2%      |
| H. Total Juror Fees Incurred                              | \$175,086 |
| Average Juror Fees Per Trial $(H/E)$                      | \$1,055   |

Average Juror Fees Per Trial, 1998-2008

