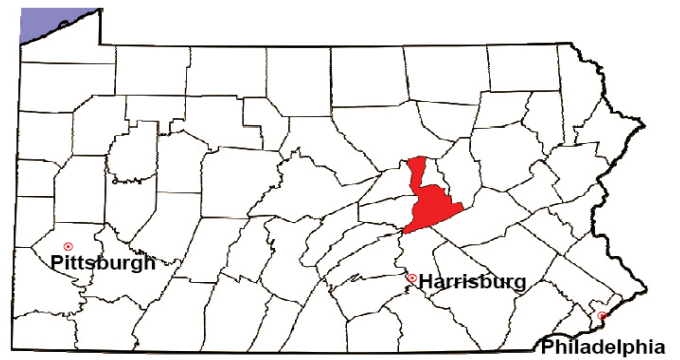


NORTHUMBERLAND COUNTY

2008 Population Estimate: 91,091

Class of County: 5th

No. of Common Pleas Court Judgeships: 3



2008 Civil		Civil Action		
Docketed Cases		879		
Arbitrated Cases		23		
Trial-Ready Cases:		Civil Action	Other	Total
Cases Pending 1/1/08		87	0	87
Became Trial Ready in '08		58	0	58
Restored to Trial List		0	0	0
Appeals from Arbitration		1	0	1
Cases Available for Trial		146	0	146
Disposed By:				
Settlement		31	0	31
Non-Jury Trial		3	0	3
Jury Trial		4	0	4
Stricken from Trial List		0	0	0
Other		0	0	0
Cases Disposed		38	0	38
Cases Pending 12/31/08		108	0	108

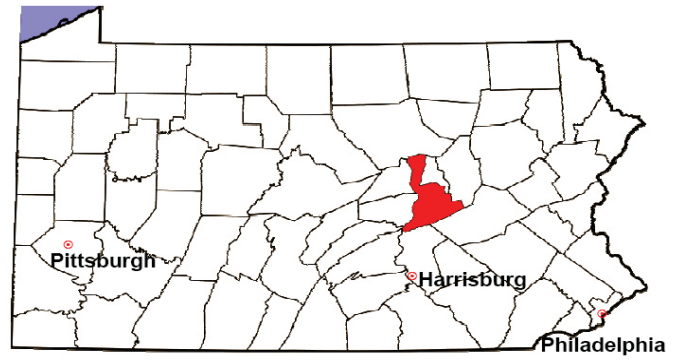
Age of Trial-Ready Cases as of 12/31/08 (Civil Action Only)		
0-6 months	14	13%
7-12 months	12	11%
13-18 months	11	10%
19-24 months	9	8%
25-30 months	17	16%
31-36 months	20	19%
Over 36 months	25	23%
Total	108	100%

Docketed Cases, 1998-2008



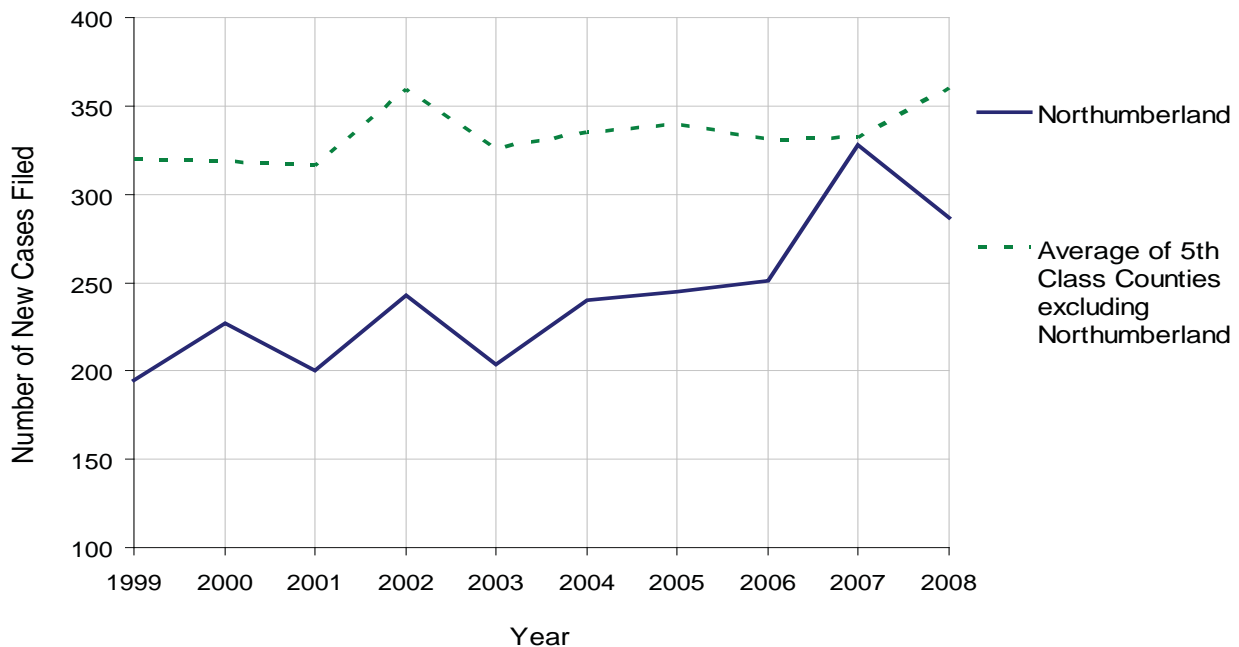
NORTHUMBERLAND COUNTY

2008 Population Estimate: 91,091
 Class of County: 5th
 No. of Common Pleas Court Judgeships: 3



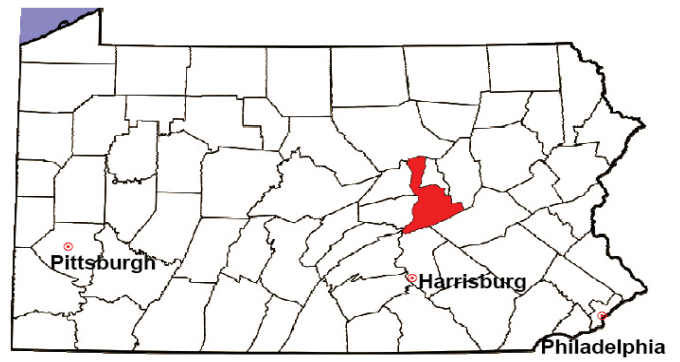
2008 Protection From Abuse	No. of Petitions	%
Cases Pending 1/1/08	13	
New Cases Filed in '08	287	
Cases Available for Processing	300	
Processed By:		
Final Order After Hearing	46	15.6%
Final Order by Stipulation or Agreement	89	30.3%
Dismissal	57	19.4%
Withdrawal	59	20.1%
Other	43	14.6%
Cases Processed	294	100.0%
Cases Pending 12/31/08	6	

PFA New Cases Filed, 1999-2008



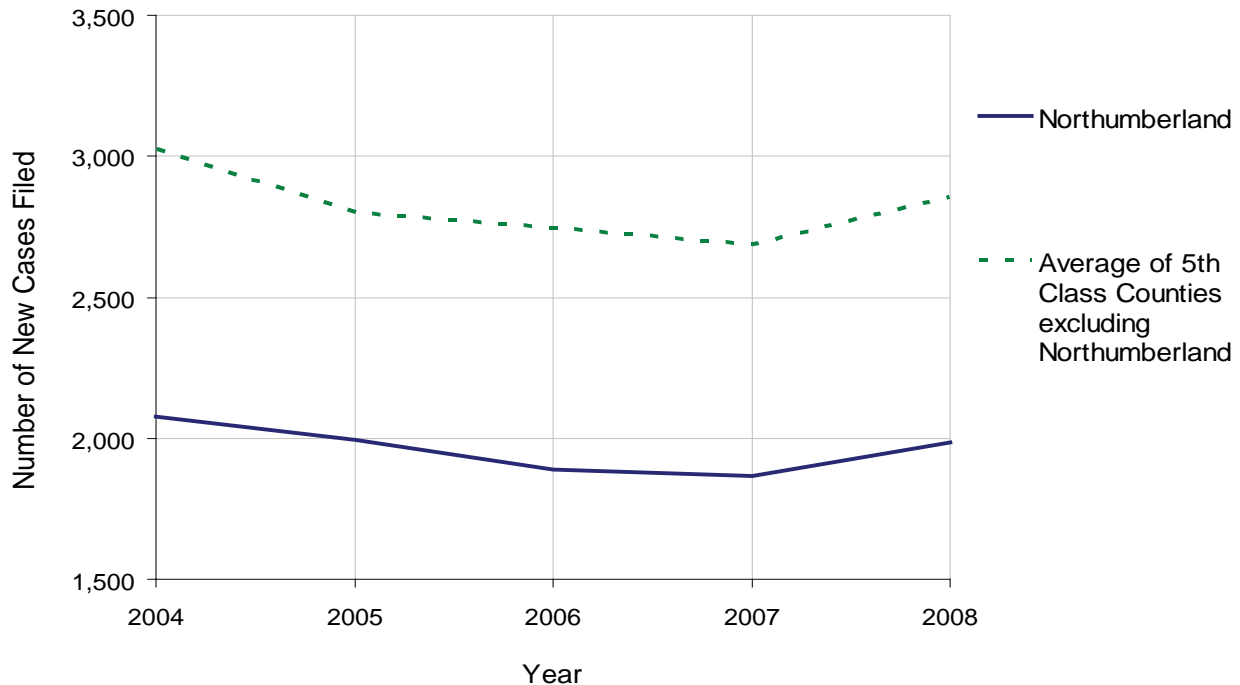
NORTHUMBERLAND COUNTY

2008 Population Estimate: 91,091
 Class of County: 5th
 No. of Common Pleas Court Judgeships: 3



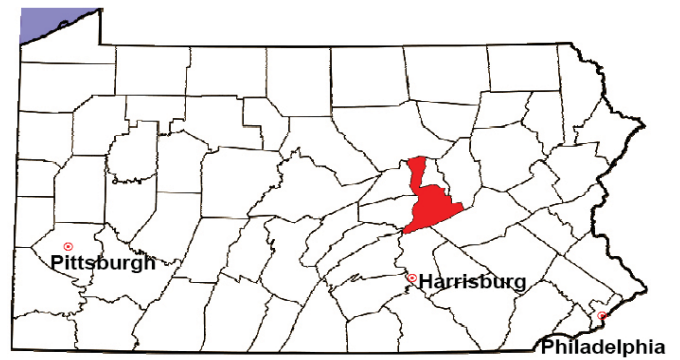
2008 Spousal & Child Support	No. of Petitions	%
Cases Pending 1/1/08	263	
New Cases Filed in '08	1,987	
Dockets Transferred In (+)	32	
Dockets Transferred Out (-)	27	
Cases Available for Processing	2,255	
Processed By:		
Judge	82	4.2%
Intake Officer	1,821	92.2%
Hearing Officer	71	3.6%
Other	1	0.1%
Cases Processed	1,975	100.0%
Cases Pending 12/31/08	280	

Spousal & Child Support New Cases Filed, 1998-2008



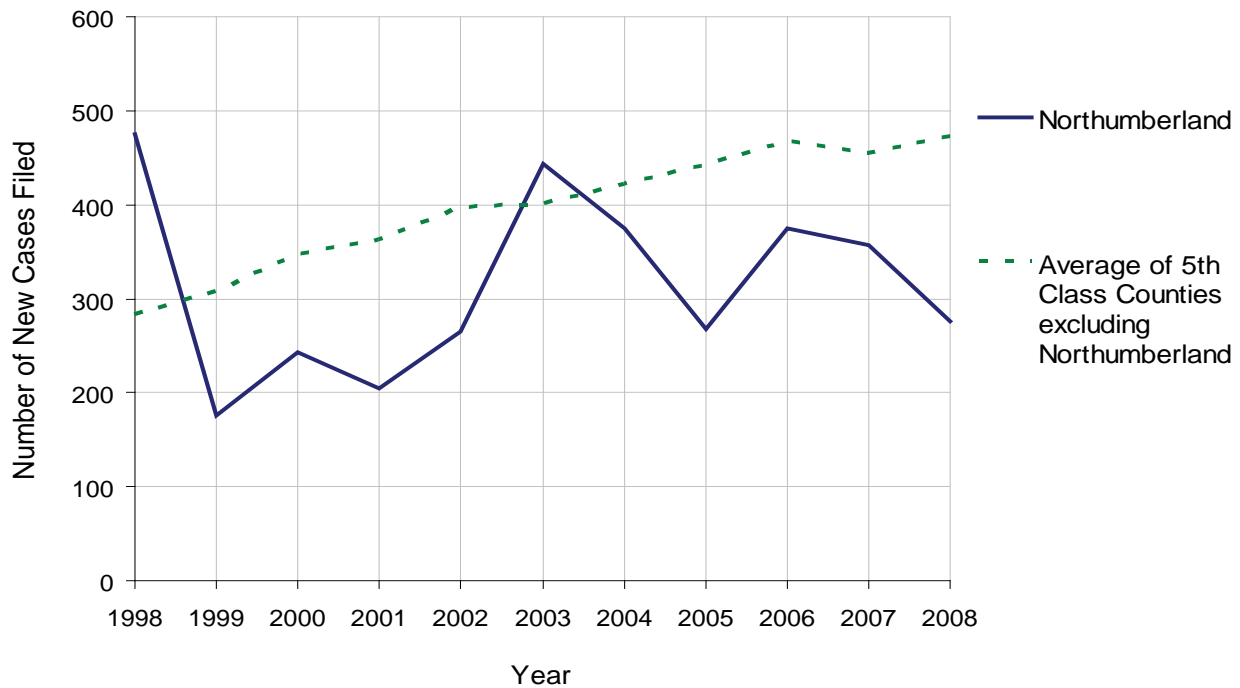
NORTHUMBERLAND COUNTY

2008 Population Estimate: 91,091
 Class of County: 5th
 No. of Common Pleas Court Judgeships: 3



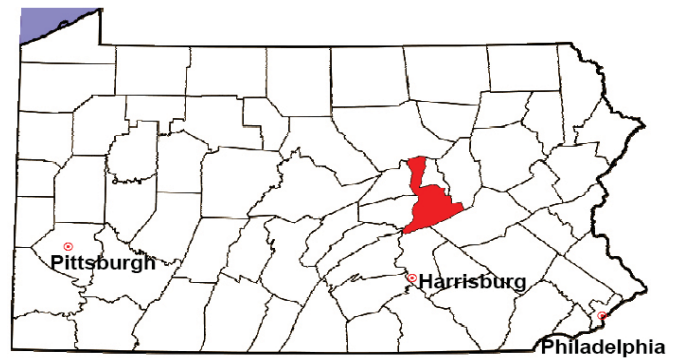
2008 Custody/Partial Custody/Visitation	No. of Petitions	%
Cases Pending 1/1/08	178	
New Cases Filed in '08	276	
Cases Available for Processing	454	
Processed By:		
Judge	0	0.0%
Non-Judicial Officer	230	97.0%
Other	7	3.0%
Cases Processed	237	100.0%
Cases Pending 12/31/08	217	

Custody/Partial Custody/Visitation New Cases Filed
 1998-2008



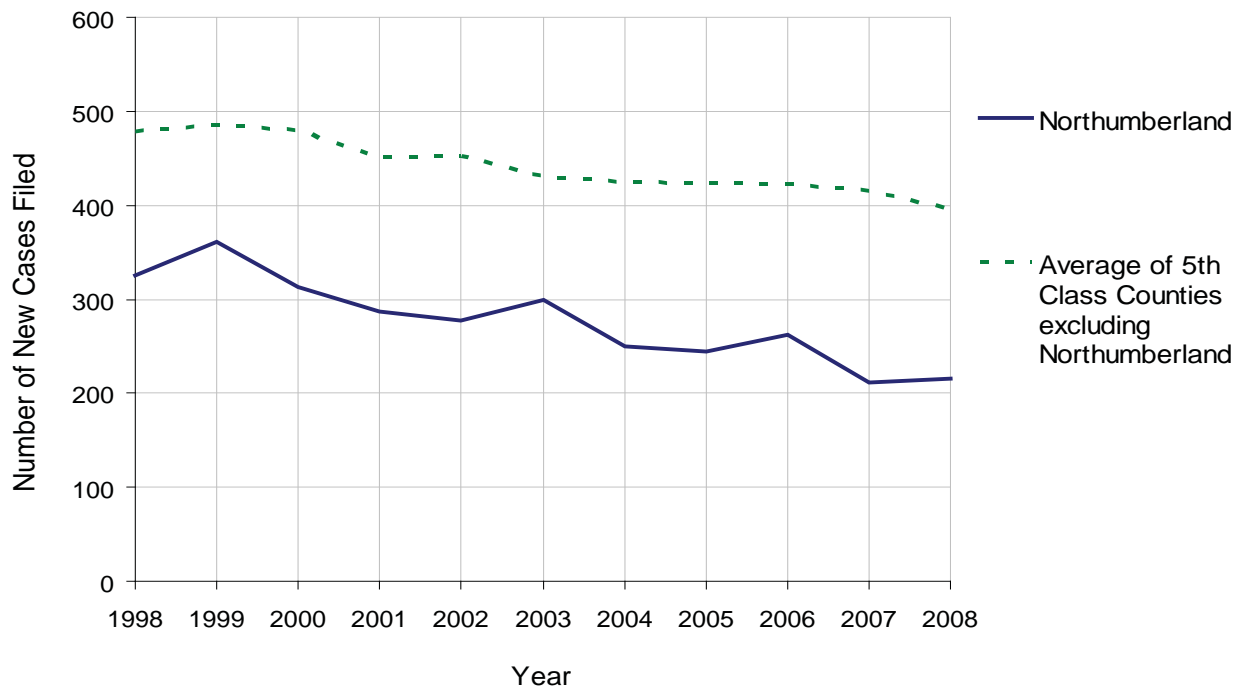
NORTHUMBERLAND COUNTY

2008 Population Estimate: 91,091
 Class of County: 5th
 No. of Common Pleas Court Judgeships: 3



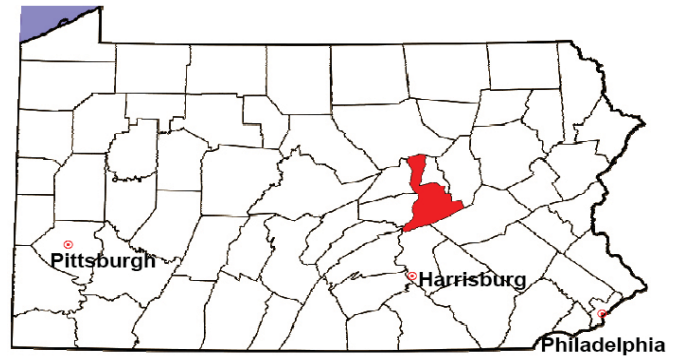
2008 Divorce	No. of Petitions	%
Cases Pending 1/1/08	753	
New Cases Filed in '08	215	
Cases Available for Processing	968	
Processed By:		
Contested Before a Judge	0	0.0%
Contested Before a Master	3	1.5%
Uncontested	192	98.5%
Other	0	0.0%
Cases Processed	195	100.0%
Cases Pending 12/31/08	773	

Divorce New Cases Filed, 1998-2008



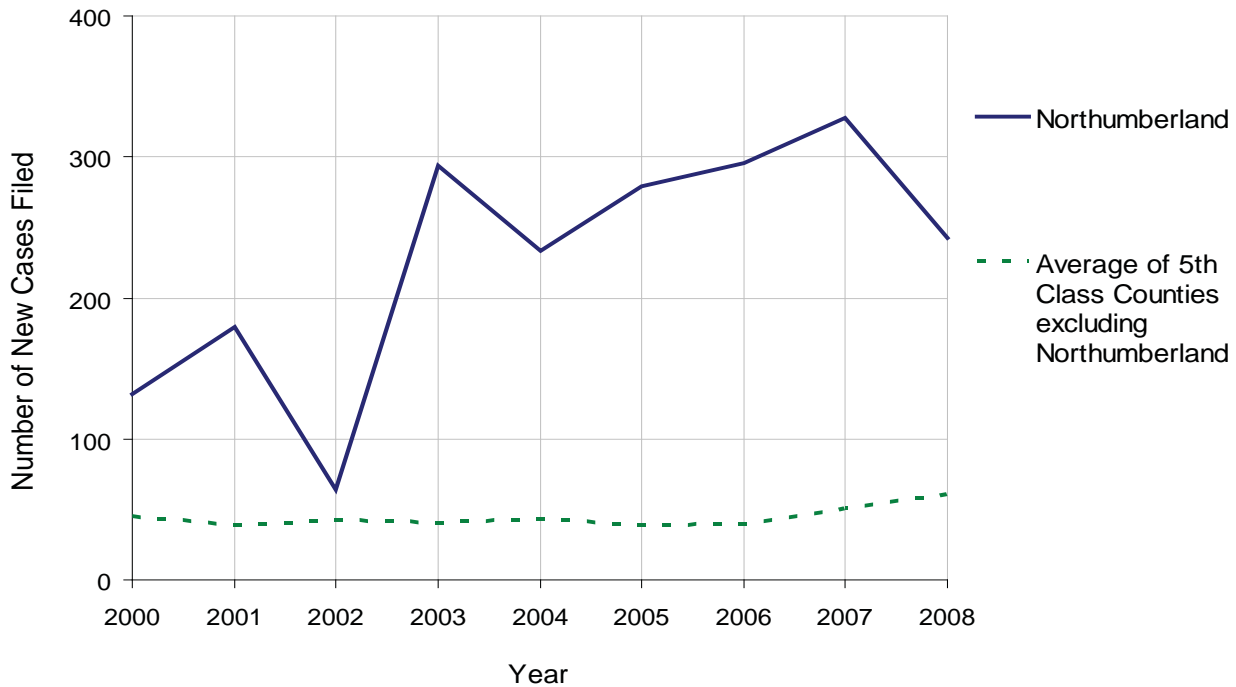
NORTHUMBERLAND COUNTY

2008 Population Estimate: 91,091
 Class of County: 5th
 No. of Common Pleas Court Judgeships: 3



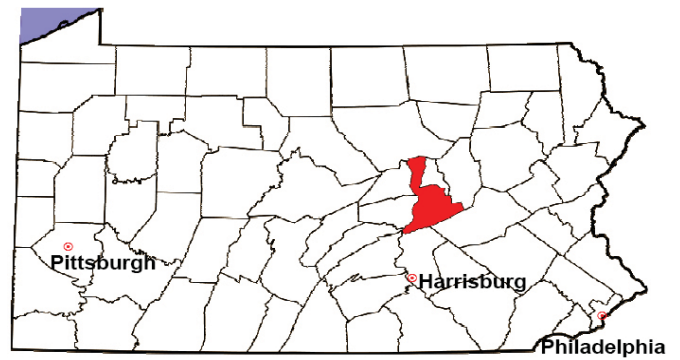
2008 Juvenile Dependency Abuse/Neglect	No. of Petitions	%
Cases Pending 1/1/08	90	
New Cases Filed in '08	243	
Cases Available for Processing	333	
Processed By:		
Judge	229	100.0%
Non-Judicial Officer	0	0.0%
Other	0	0.0%
Cases Processed	229	100.0%
Cases Pending 12/31/08	104	

Abuse/Neglect New Cases Filed, 2000-2008



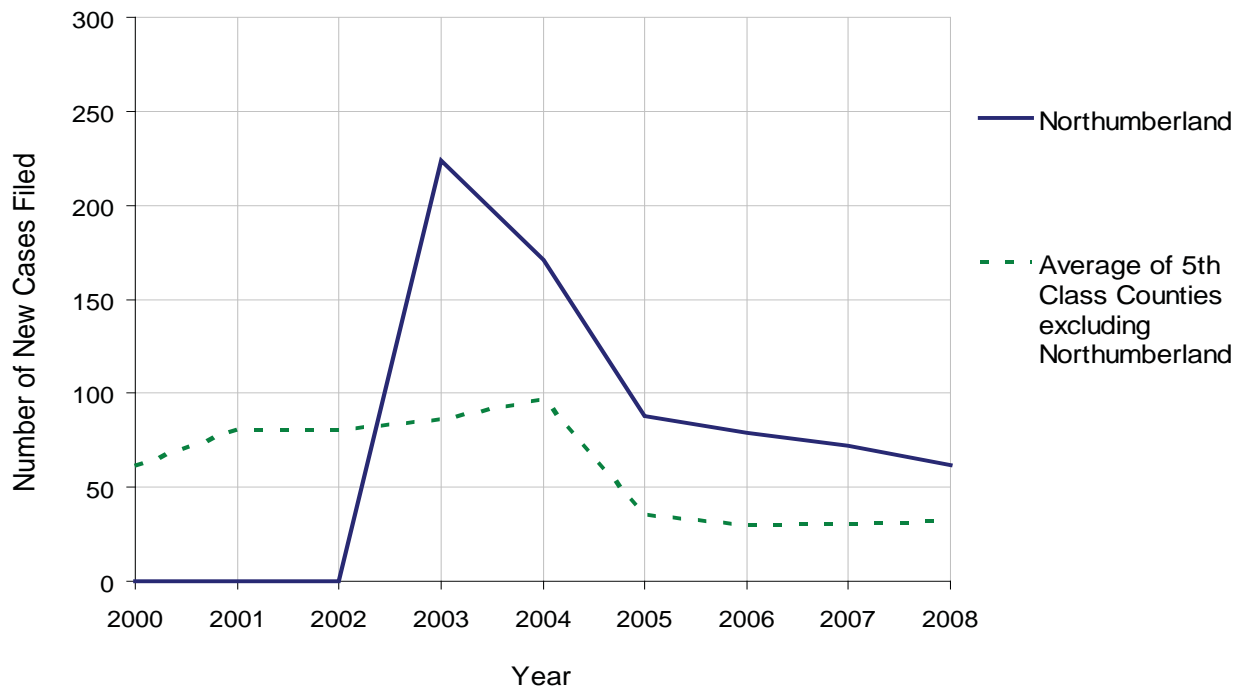
NORTHUMBERLAND COUNTY

2008 Population Estimate: 91,091
 Class of County: 5th
 No. of Common Pleas Court Judgeships: 3



2008 Juvenile Dependency Status Offenses	No. of Petitions	%
Cases Pending 1/1/08	18	
New Cases Filed in '08	62	
Cases Available for Processing	80	
Processed By:		
Judge	1	1.3%
Non-Judicial Officer	77	96.3%
Other	2	2.5%
Cases Processed	80	100.0%
Cases Pending 12/31/08	0	

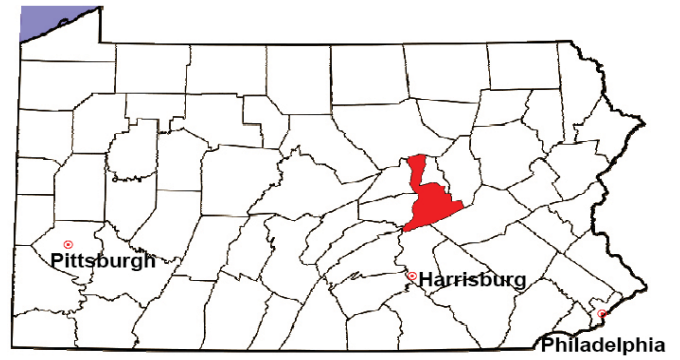
Status Offenses New Cases Filed, 2000-2008



Note: A sharp increase or decrease may reflect changes in practice or counting methods.

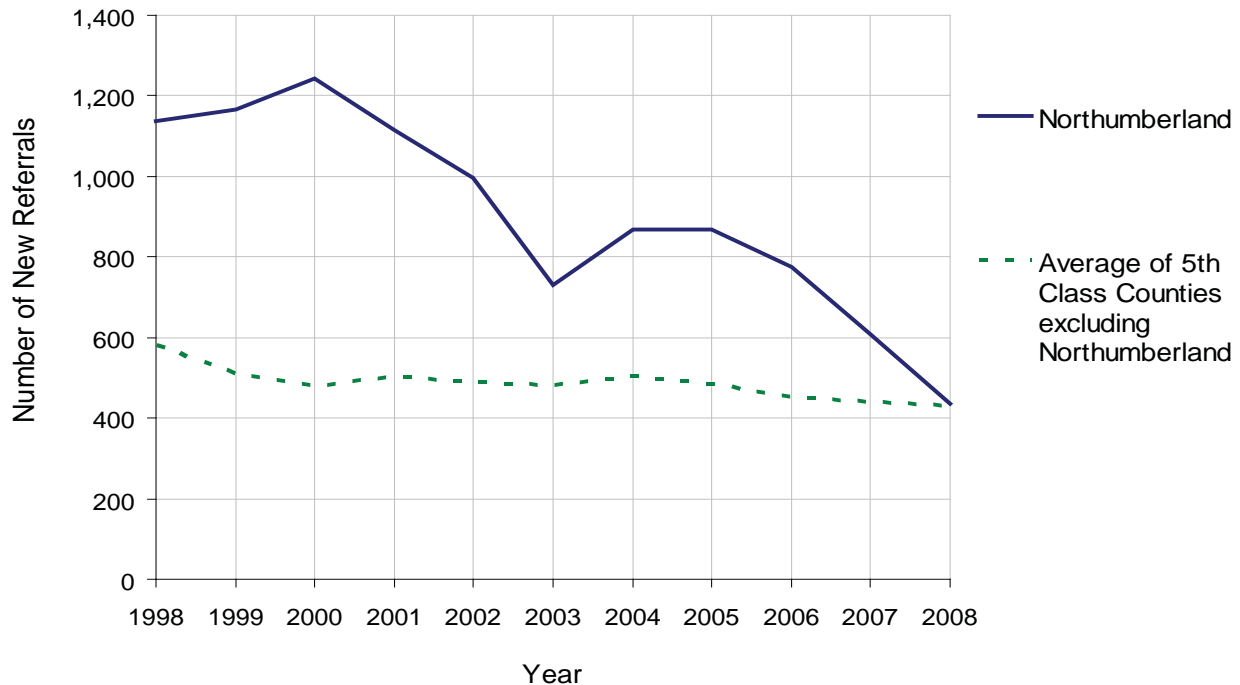
NORTHUMBERLAND COUNTY

2008 Population Estimate: 91,091
 Class of County: 5th
 No. of Common Pleas Court Judgeships: 3



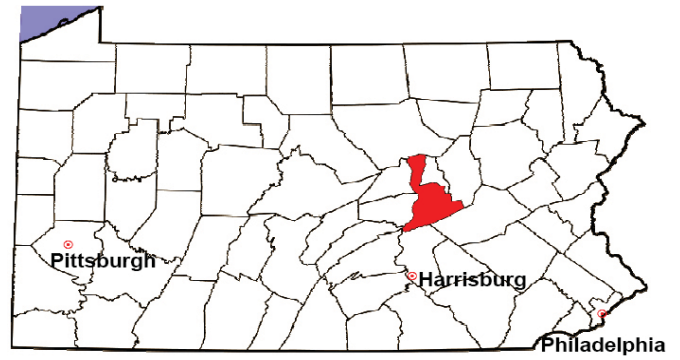
2008 Juvenile Delinquency	No. of Referrals	%
Cases Pending 1/1/08	291	
New Referrals in '08	436	
Cases Available for Processing	727	
Processed By:		
Judge	188	43.7%
Non-Judicial Officer	229	53.3%
Other	13	3.0%
Cases Processed	430	100.0%
Cases Pending 12/31/08	297	

Juvenile Delinquency New Referrals, 1998-2008



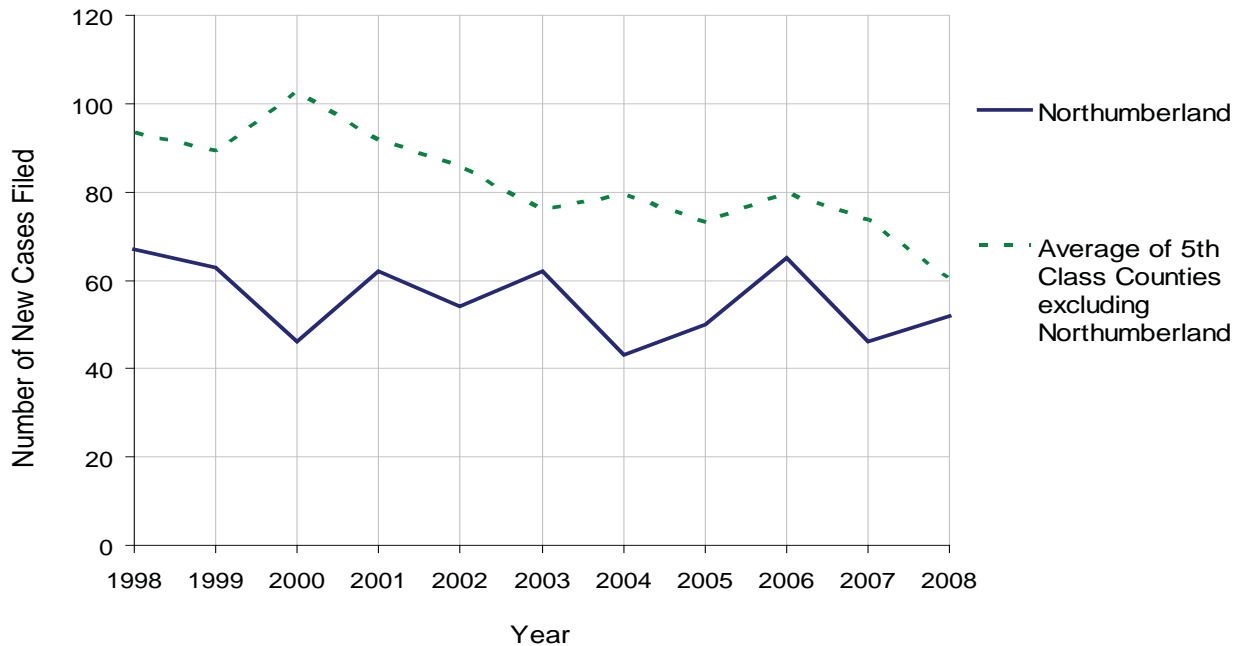
NORTHUMBERLAND COUNTY

2008 Population Estimate: 91,091
 Class of County: 5th
 No. of Common Pleas Court Judgeships: 3



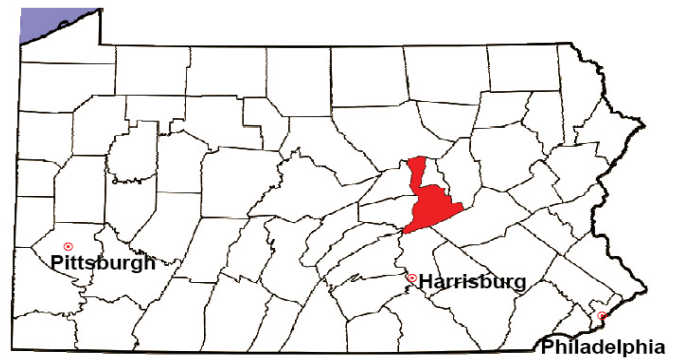
2008 Accounts	No. of Accounts	%
Cases Pending 1/1/08	3	
New Cases Filed in '08	52	
Cases Available for Processing	55	
Processed By:		
Contested before a Judge	4	7.5%
Contested before a Non-Judicial Officer	0	0.0%
Uncontested	49	92.5%
Other	0	0.0%
Cases Processed	53	100.0%
Cases Pending 12/31/08	2	

Accounts New Cases Filed, 1998-2008



NORTHUMBERLAND COUNTY

2008 Population Estimate: 91,091
 Class of County: 5th
 No. of Common Pleas Court Judgeships: 3

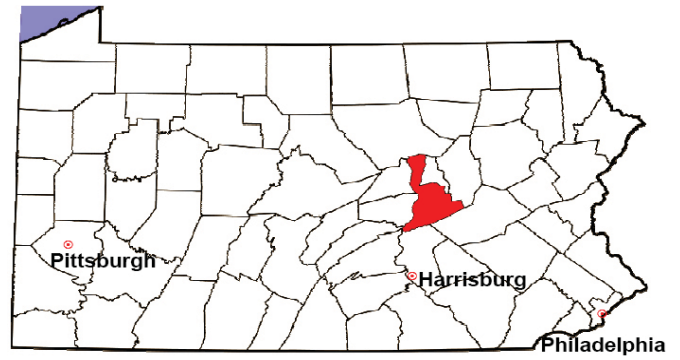


2008 Adoptions		No. of Cases	%
Cases Pending 1/1/08		3	
New Cases Filed in '08		40	
Cases Available for Processing		43	
Processed By:			
Contested before a Judge	Granted	0	0.0%
	Denied	0	0.0%
Uncontested	Granted	41	100.0%
	Denied	0	0.0%
Other		0	0.0%
Cases Processed		41	100.0%
Cases Pending 12/31/08		2	

Note: Prior to 2008, each petition was counted as one new case, regardless of the number of children listed on the petition. Starting in 2008, each child listed on a petition is counted as a separate case. Therefore, statistics for 2008 should not be compared with those for previous years.

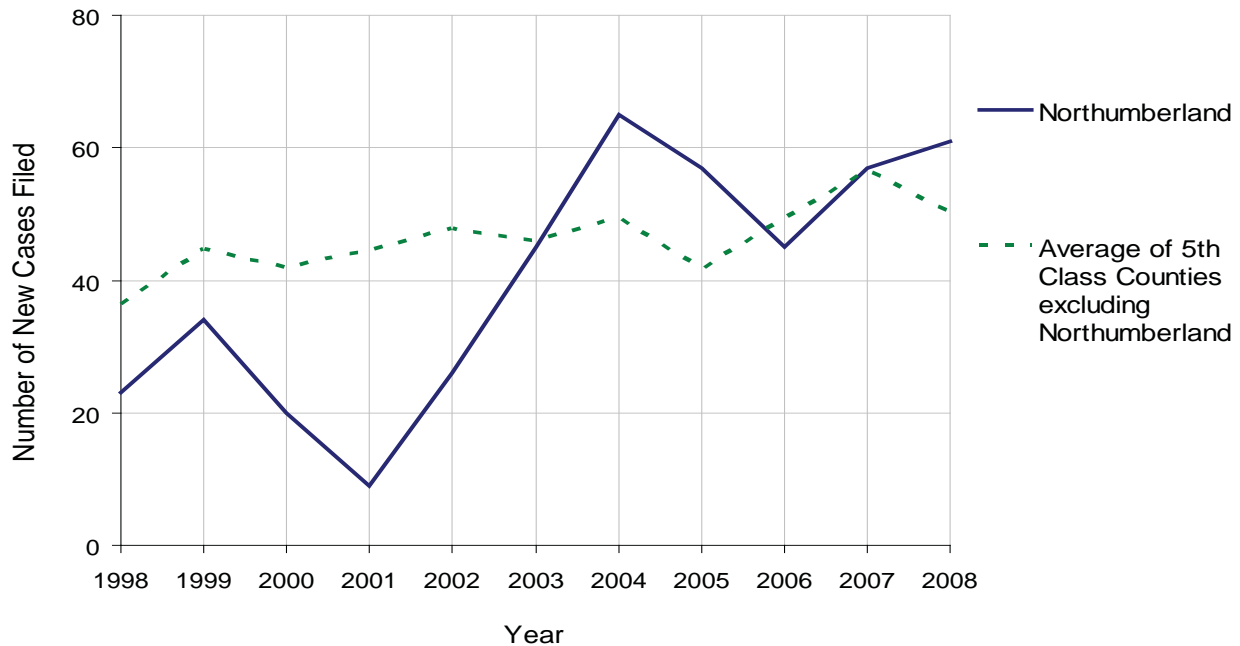
NORTHUMBERLAND COUNTY

2008 Population Estimate: 91,091
 Class of County: 5th
 No. of Common Pleas Court Judgeships: 3



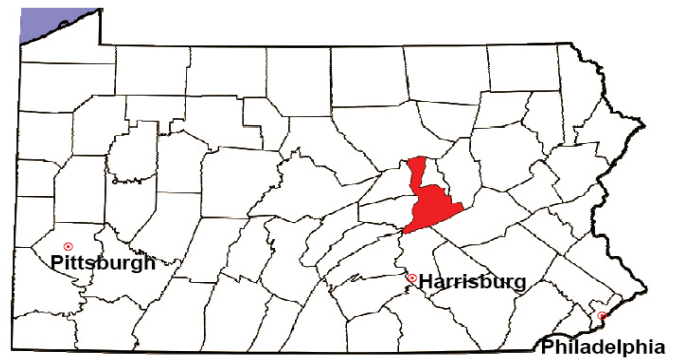
2008 Relinquishments/Terminations	No. of Petitions	%
Cases Pending 1/1/08	0	
New Cases Filed in '08	61	
Cases Available for Processing	61	
Processed By:		
Contested before a Judge	0	0.0%
Uncontested	59	100.0%
Other	0	0.0%
Cases Processed	59	100.0%
Cases Pending 12/31/08	2	

Relinquishments/Terminations New Cases Filed, 1998-2008



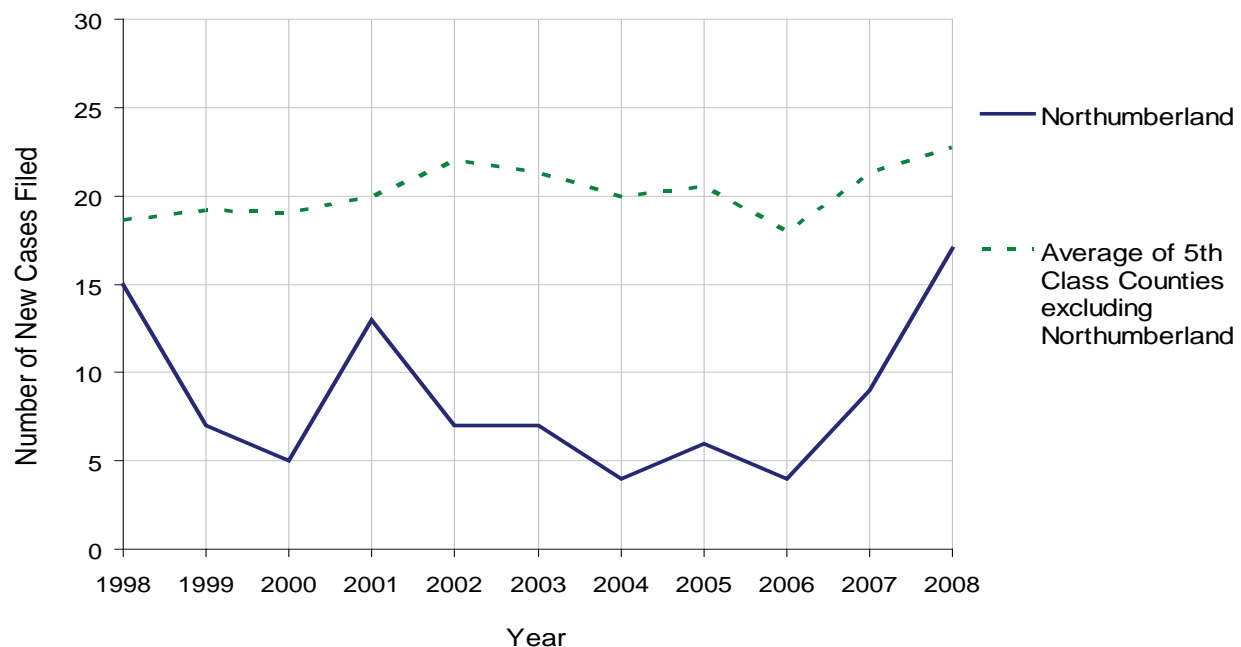
NORTHUMBERLAND COUNTY

2008 Population Estimate: 91,091
 Class of County: 5th
 No. of Common Pleas Court Judgeships: 3



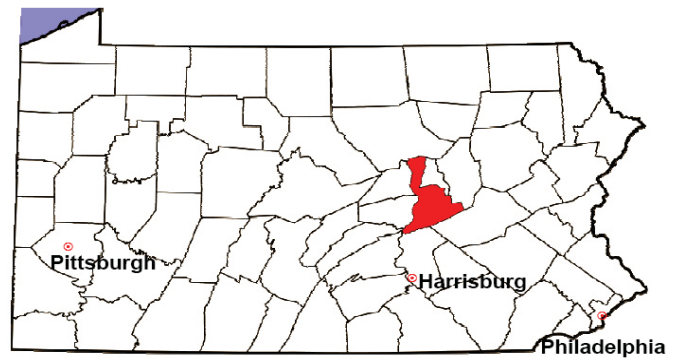
2008 Appointment of Guardians	No. of Petitions	%
Cases Pending 1/1/08	0	
New Cases Filed in '08	17	
Cases Available for Processing	17	
Processed By:		
Contested before a Judge	0	0.0%
Uncontested	15	100.0%
Other	0	0.0%
Cases Processed	15	100.0%
Cases Pending 12/31/08	2	

Appointment of Guardians New Cases Filed, 1998-2008



NORTHUMBERLAND COUNTY

2008 Population Estimate: 91,091
 Class of County: 5th
 No. of Common Pleas Court Judgeships: 3



2008 Jury Activity & Performance Measures		
A. Juror Days		972
B. Number Sent to Voir Dire		1,009
	Voir Dire Attendance Rate $(B/A * 100)$	103.8%
C. Number of Voir Dires Started		21
	Juror Days Per Voir Dire Starts (A/C)	46
D. Number of Jurors Selected		264
	Juror Selection Rate $(D/B * 100)$	26.2%
E. Number of Jury Trials Started		17
	Juror Days Per Trial Starts (A/E)	57
	Number of Voir Dires Not Resulting in Trial $(C-E)$	4
	Percent Voir Dires Not Resulting in Trial $(C-E)/C * 100$	19.0%
F. Pool Days		14
G. Zero Panel Days		0
	Percent Zero Panel Days $(G/F * 100)$	0.0%
H. Total Juror Fees Incurred		\$21,991
	Average Juror Fees Per Trial (H/E)	\$1,294

Average Juror Fees Per Trial, 1998-2008

