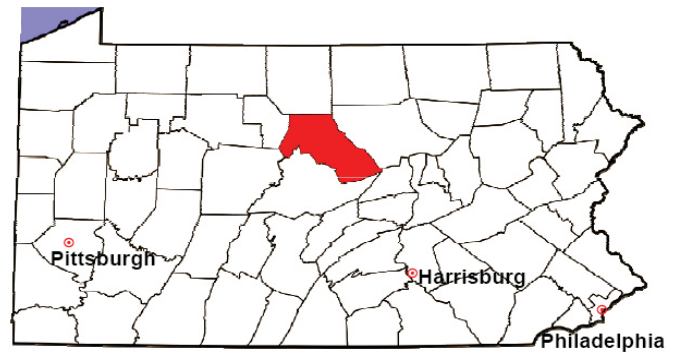


CLINTON COUNTY

2008 Population Estimate: 37,038

Class of County: 6th

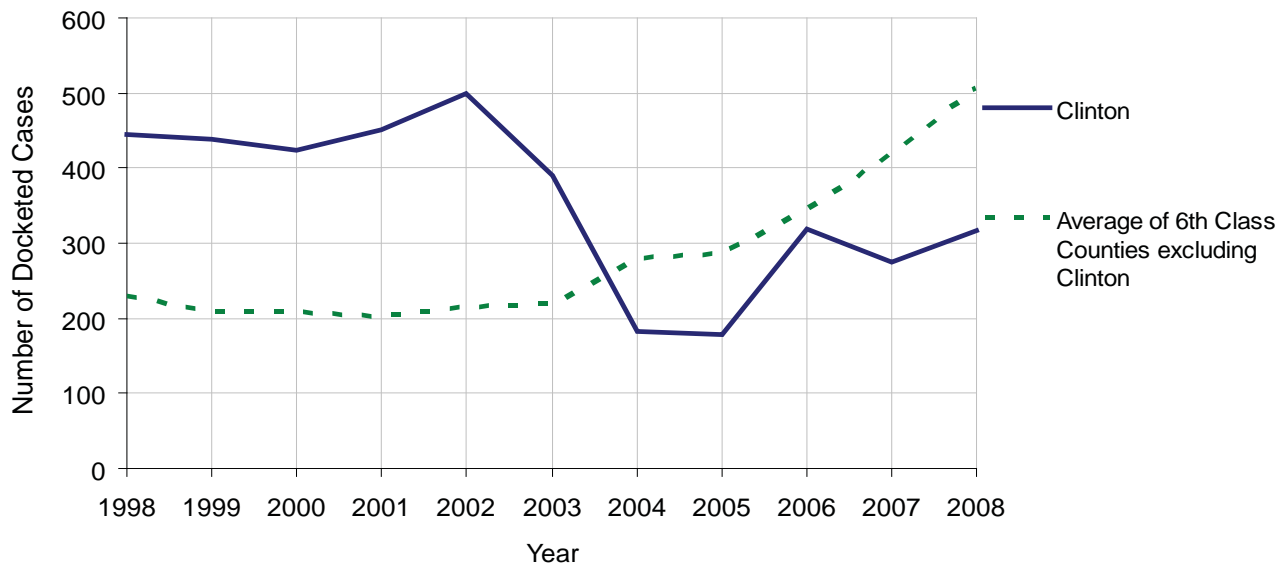
No. of Common Pleas Court Judgeships: 2



2008 Civil		Civil Action		
Docketed Cases		316		
Arbitrated Cases		4		
Trial-Ready Cases:		Civil Action	Other	Total
Cases Pending 1/1/08		9	0	9
Became Trial Ready in '08		50	7	57
Restored to Trial List		1	0	1
Appeals from Arbitration		0	0	0
Cases Available for Trial		60	7	67
Disposed By:				
Settlement		20	5	25
Non-Jury Trial		12	1	13
Jury Trial		1	0	1
Stricken from Trial List		2	0	2
Other		6	0	6
Cases Disposed		41	6	47
Cases Pending 12/31/08		19	1	20

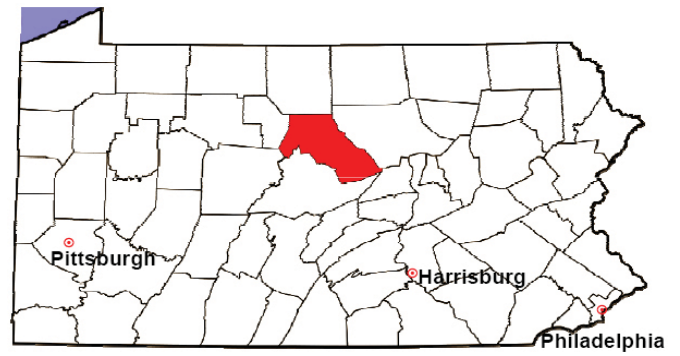
Age of Trial-Ready Cases as of 12/31/08 (Civil Action Only)		
0-6 months	18	95%
7-12 months	1	5%
13-18 months	0	0%
19-24 months	0	0%
25-30 months	0	0%
31-36 months	0	0%
Over 36 months	0	0%
Total	19	100%

Docketed Cases, 1998-2008



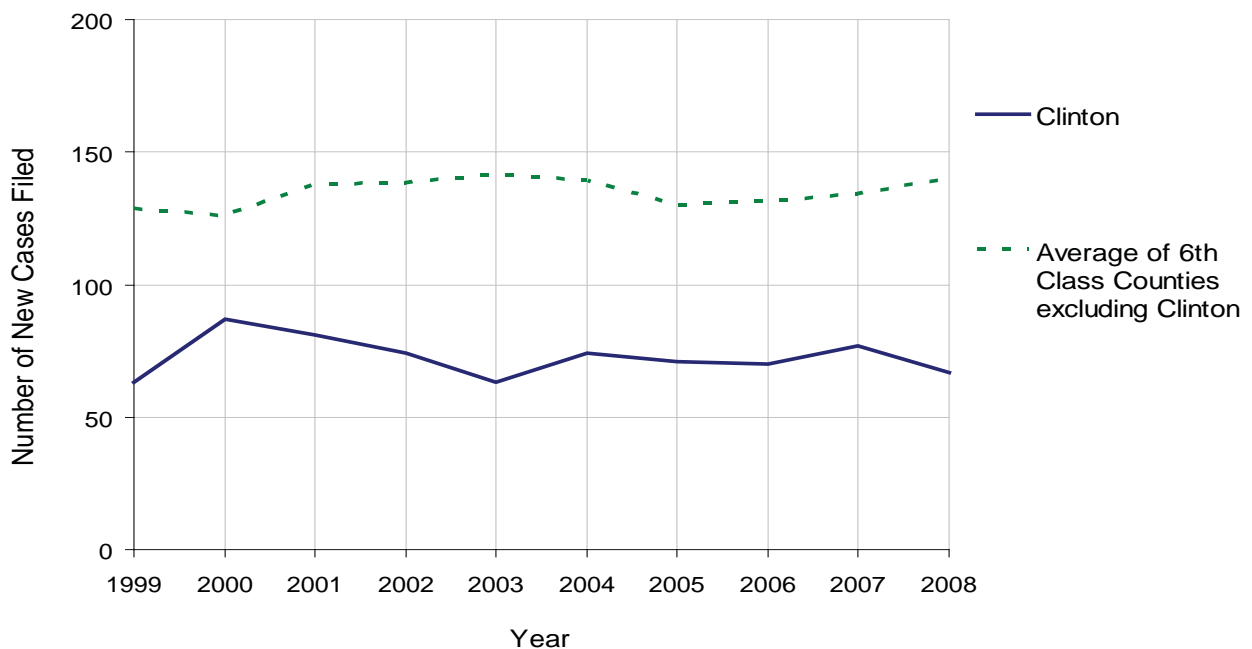
CLINTON COUNTY

2008 Population Estimate: 37,038
 Class of County: 6th
 No. of Common Pleas Court Judgeships: 2



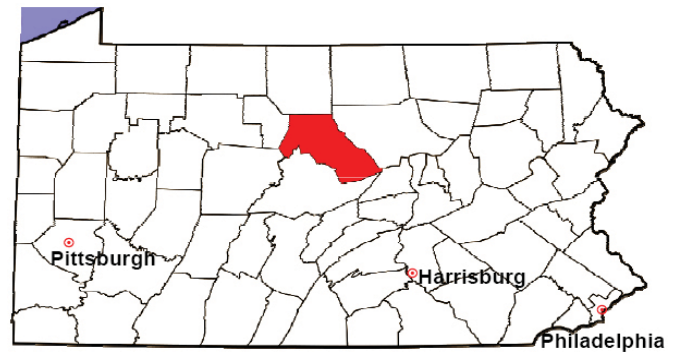
2008 Protection From Abuse	No. of Petitions	%
Cases Pending 1/1/08	5	
New Cases Filed in '08	67	
Cases Available for Processing	72	
Processed By:		
Final Order After Hearing	17	25.8%
Final Order by Stipulation or Agreement	17	25.8%
Dismissal	32	48.5%
Withdrawal	0	0.0%
Other	0	0.0%
Cases Processed	66	100.0%
Cases Pending 12/31/08	6	

PFA New Cases Filed, 1999-2008



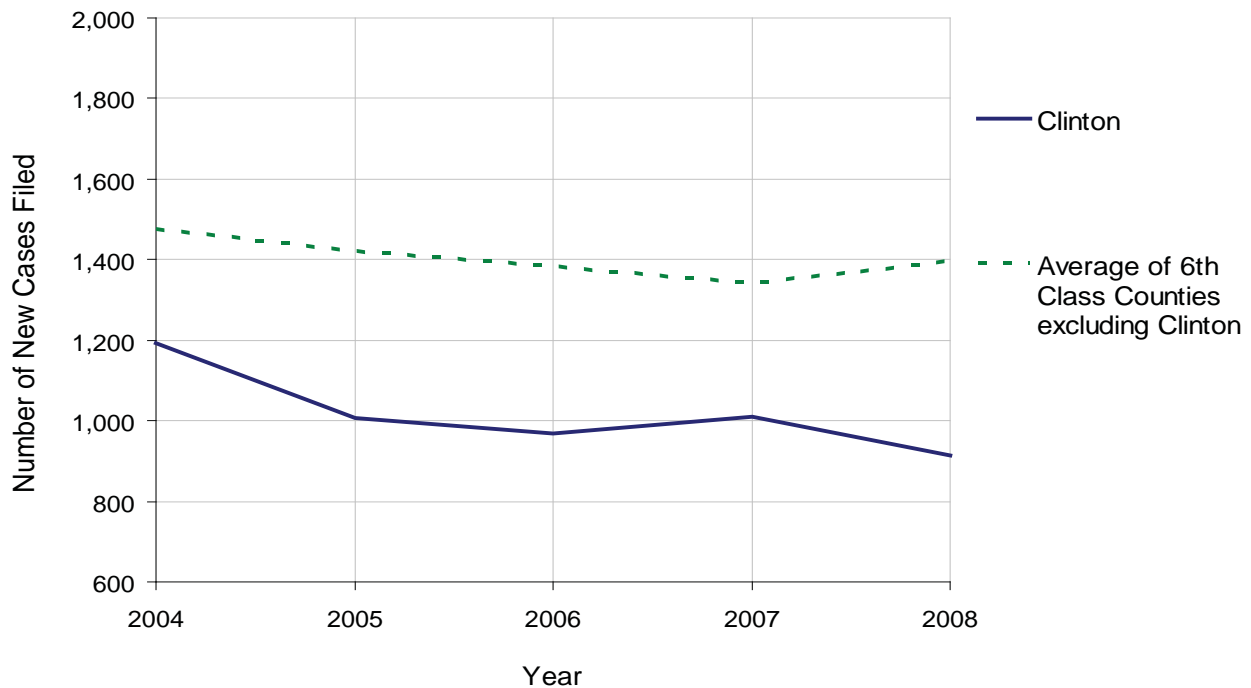
CLINTON COUNTY

2008 Population Estimate: 37,038
 Class of County: 6th
 No. of Common Pleas Court Judgeships: 2



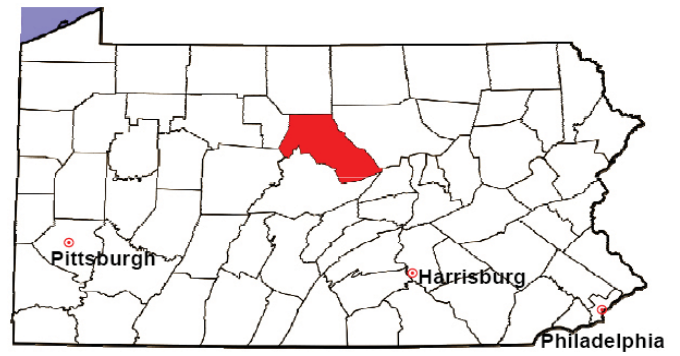
2008 Spousal & Child Support	No. of Petitions	%
Cases Pending 1/1/08	72	
New Cases Filed in '08	914	
Dockets Transferred In (+)	12	
Dockets Transferred Out (-)	11	
Cases Available for Processing	987	
Processed By:		
Judge	86	9.2%
Intake Officer	849	90.7%
Hearing Officer	0	0.0%
Other	0	0.1%
Cases Processed	935	100.0%
Cases Pending 12/31/08	52	

Spousal & Child Support New Cases Filed, 1998-2008



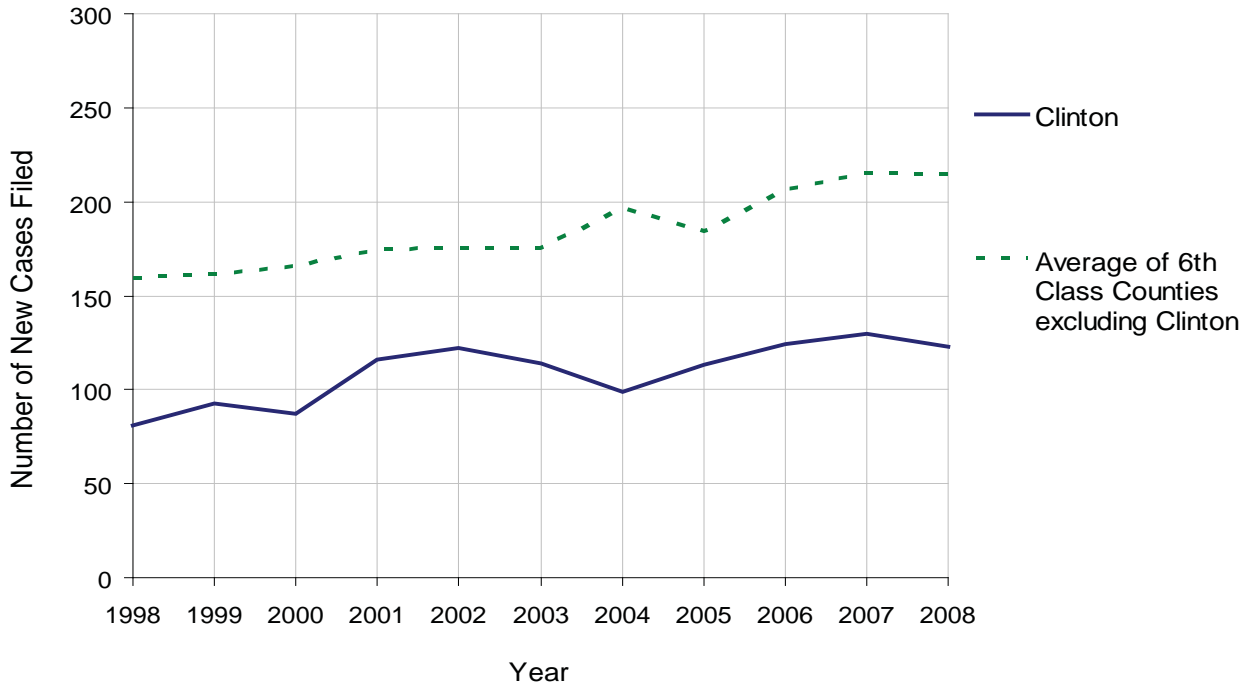
CLINTON COUNTY

2008 Population Estimate: 37,038
 Class of County: 6th
 No. of Common Pleas Court Judgeships: 2



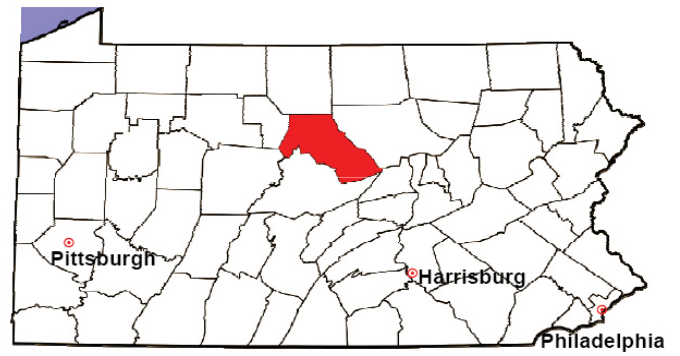
2008 Custody/Partial Custody/Visitation	No. of Petitions	%
Cases Pending 1/1/08	111	
New Cases Filed in '08	123	
Cases Available for Processing	234	
Processed By:		
Judge	104	87.4%
Non-Judicial Officer	0	0.0%
Other	15	12.6%
Cases Processed	119	100.0%
Cases Pending 12/31/08	115	

Custody/Partial Custody/Visitation New Cases Filed
 1998-2008



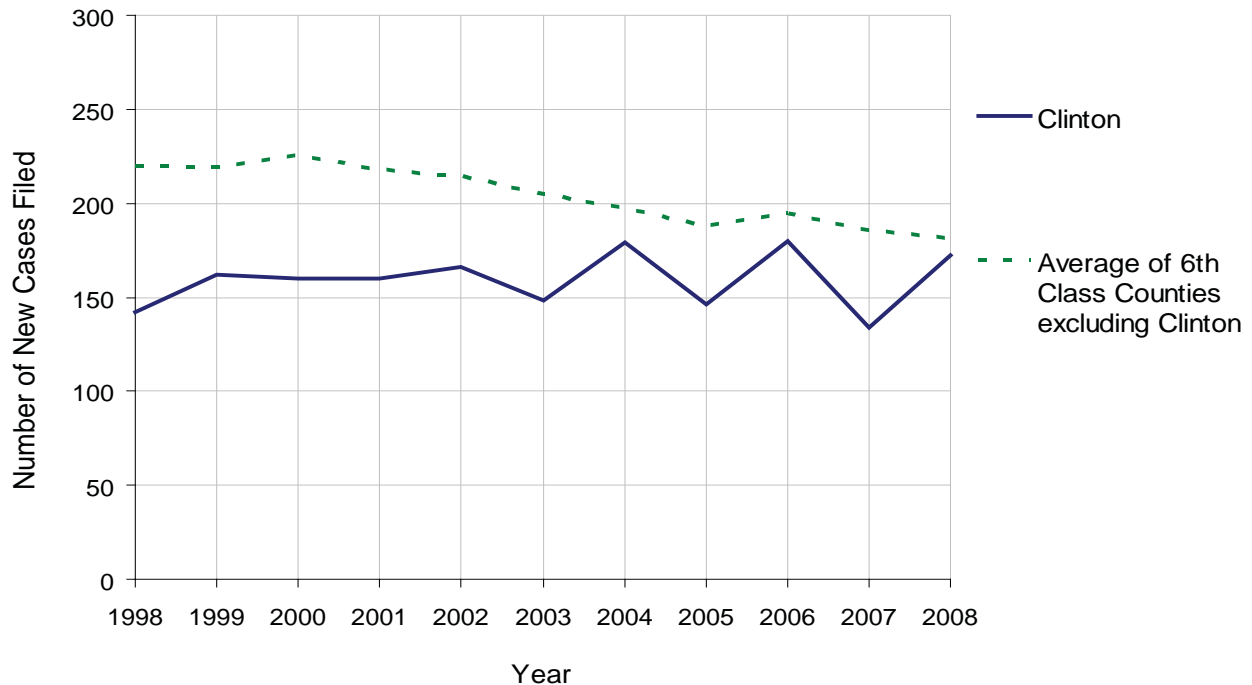
CLINTON COUNTY

2008 Population Estimate: 37,038
 Class of County: 6th
 No. of Common Pleas Court Judgeships: 2



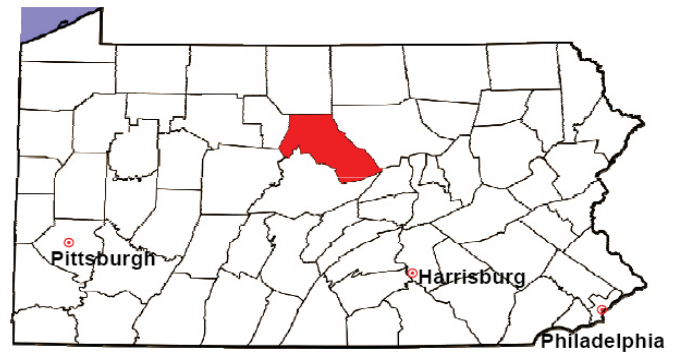
2008 Divorce	No. of Petitions	%
Cases Pending 1/1/08	173	
New Cases Filed in '08	172	
Cases Available for Processing	345	
Processed By:		
Contested Before a Judge	43	32.8%
Contested Before a Master	3	2.3%
Uncontested	66	50.4%
Other	19	14.5%
Cases Processed	131	100.0%
Cases Pending 12/31/08	214	

Divorce New Cases Filed, 1998-2008



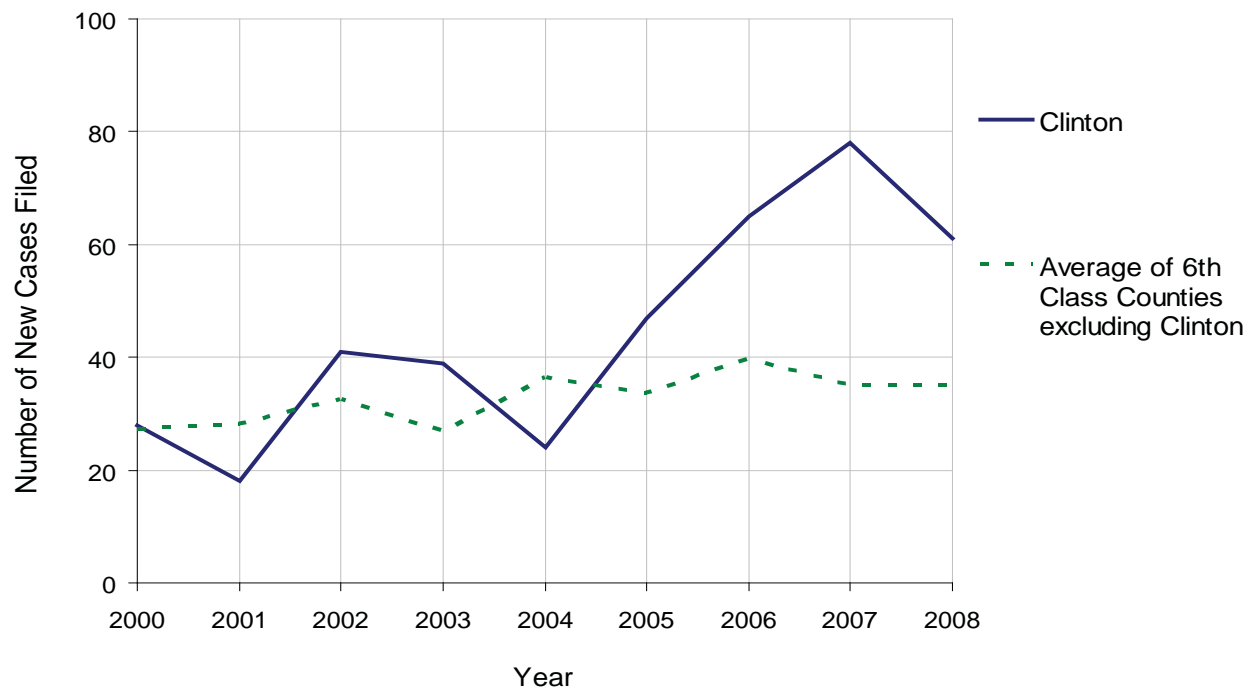
CLINTON COUNTY

2008 Population Estimate: 37,038
 Class of County: 6th
 No. of Common Pleas Court Judgeships: 2



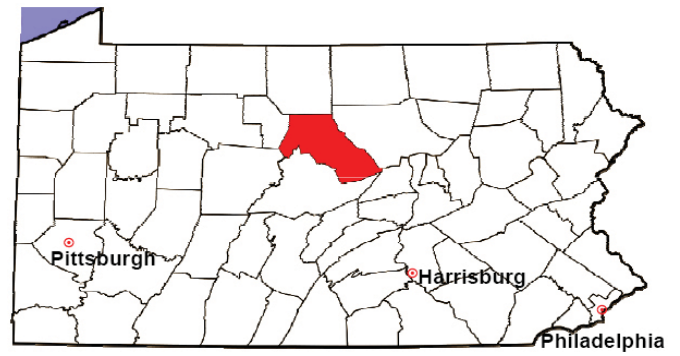
2008 Juvenile Dependency Abuse/Neglect	No. of Petitions	%
Cases Pending 1/1/08	22	
New Cases Filed in '08	61	
Cases Available for Processing	83	
Processed By:		
Judge	66	79.5%
Non-Judicial Officer	1	1.2%
Other	16	19.3%
Cases Processed	83	100.0%
Cases Pending 12/31/08	0	

Abuse/Neglect New Cases Filed, 2000-2008



CLINTON COUNTY

2008 Population Estimate: 37,038
 Class of County: 6th
 No. of Common Pleas Court Judgeships: 2



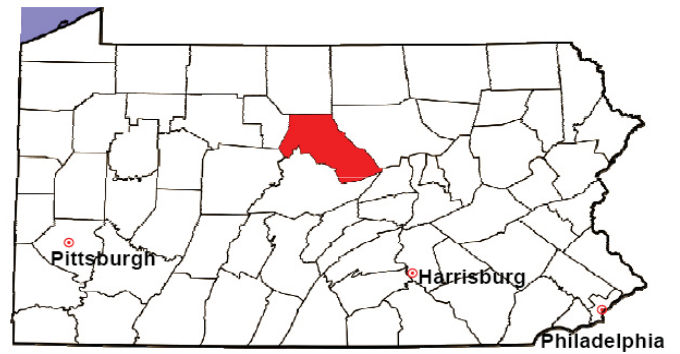
2008 Juvenile Dependency Status Offenses	No. of Petitions	%
Cases Pending 1/1/08	0	
New Cases Filed in '08	13	
Cases Available for Processing	13	
Processed By:		
Judge	13	100.0%
Non-Judicial Officer	0	0.0%
Other	0	0.0%
Cases Processed	13	100.0%
Cases Pending 12/31/08	0	

Status Offenses New Cases Filed, 2000-2008



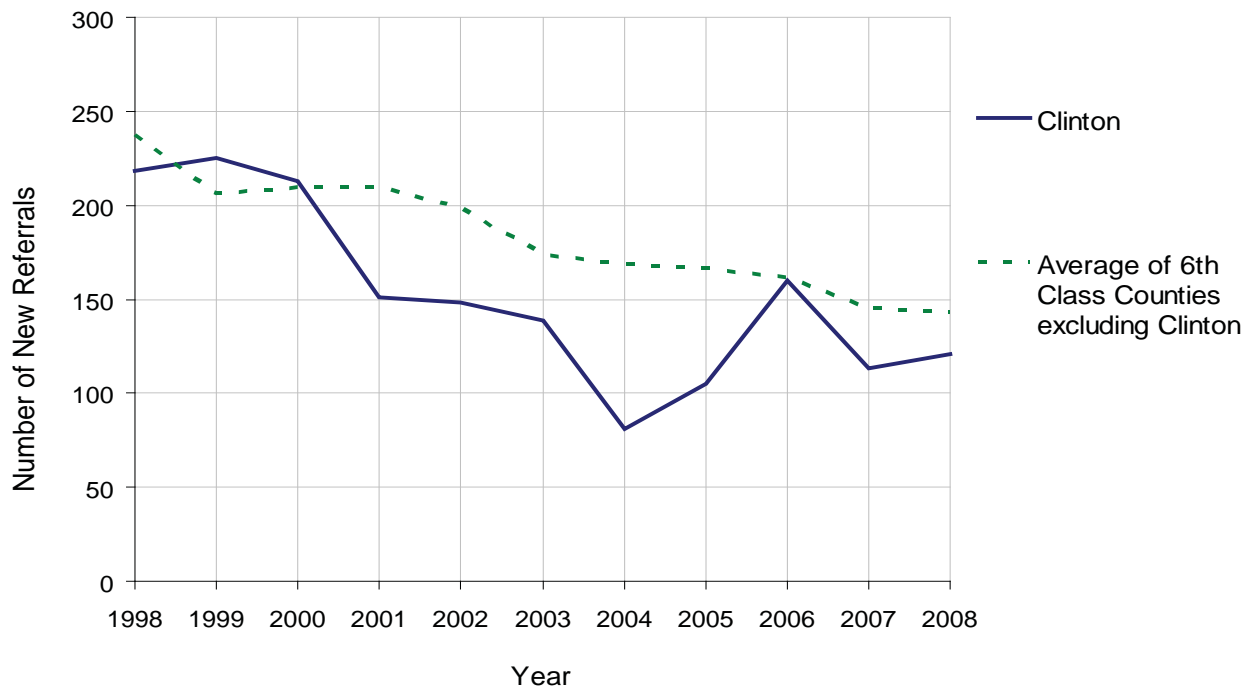
CLINTON COUNTY

2008 Population Estimate: 37,038
 Class of County: 6th
 No. of Common Pleas Court Judgeships: 2



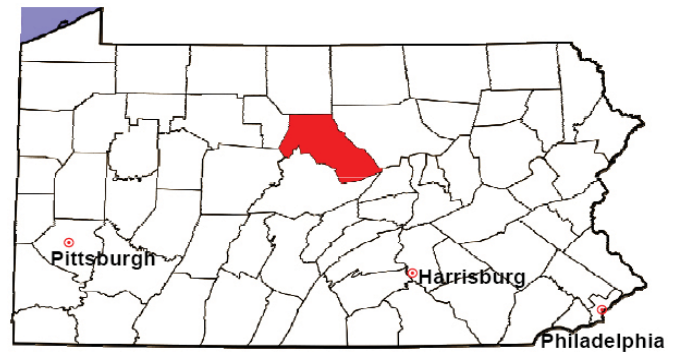
2008 Juvenile Delinquency	No. of Referrals	%
Cases Pending 1/1/08	22	
New Referrals in '08	121	
Cases Available for Processing	143	
Processed By:		
Judge	88	65.7%
Non-Judicial Officer	38	28.4%
Other	8	6.0%
Cases Processed	134	100.0%
Cases Pending 12/31/08	9	

Juvenile Delinquency New Referrals, 1998-2008



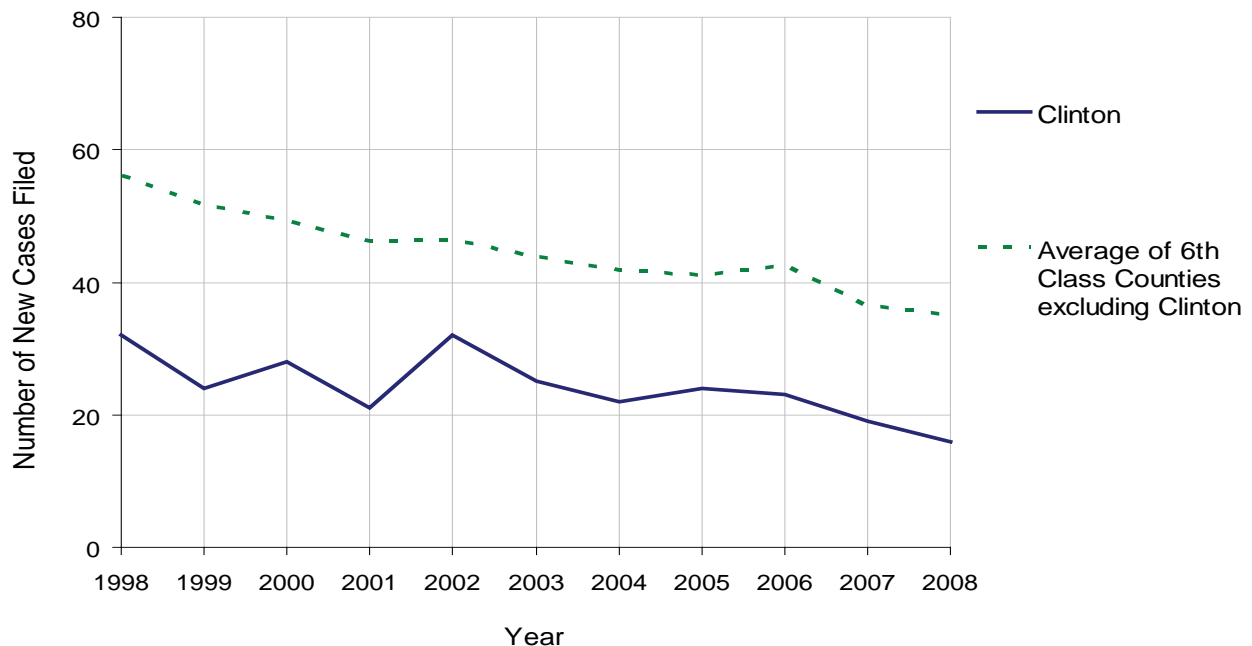
CLINTON COUNTY

2008 Population Estimate: 37,038
 Class of County: 6th
 No. of Common Pleas Court Judgeships: 2



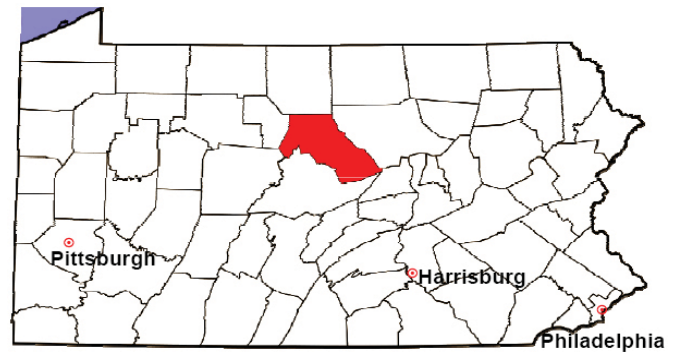
2008 Accounts	No. of Accounts	%
Cases Pending 1/1/08	12	
New Cases Filed in '08	16	
Cases Available for Processing	28	
Processed By:		
Contested before a Judge	0	0.0%
Contested before a Non-Judicial Officer	0	0.0%
Uncontested	18	100.0%
Other	0	0.0%
Cases Processed	18	100.0%
Cases Pending 12/31/08	10	

Accounts New Cases Filed, 1998-2008



CLINTON COUNTY

2008 Population Estimate: 37,038
 Class of County: 6th
 No. of Common Pleas Court Judgeships: 2



2008 Adoptions		No. of Cases	%
Cases Pending 1/1/08		17	
New Cases Filed in '08		19	
Cases Available for Processing		36	
Processed By:			
Contested before a Judge	Granted	11	52.4%
	Denied	0	0.0%
Uncontested	Granted	10	47.6%
	Denied	0	0.0%
Other		0	0.0%
Cases Processed		21	100.0%
Cases Pending 12/31/08		15	

Note: Prior to 2008, each petition was counted as one new case, regardless of the number of children listed on the petition. Starting in 2008, each child listed on a petition is counted as a separate case. Therefore, statistics for 2008 should not be compared with those for previous years.

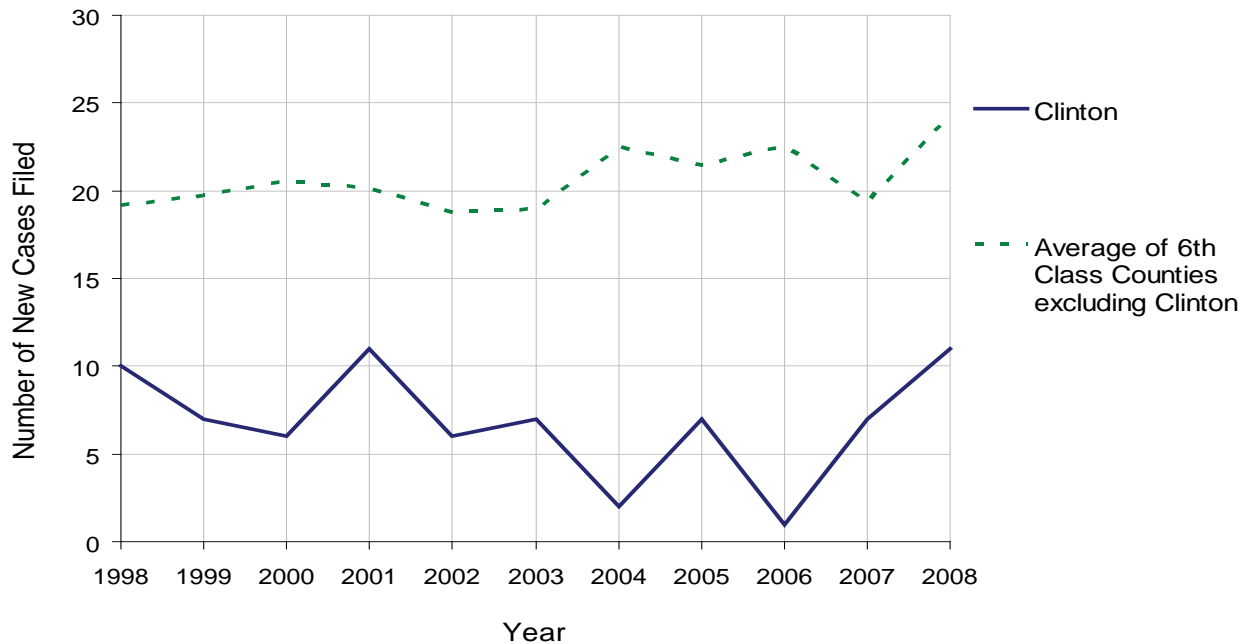
CLINTON COUNTY

2008 Population Estimate: 37,038
 Class of County: 6th
 No. of Common Pleas Court Judgeships: 2



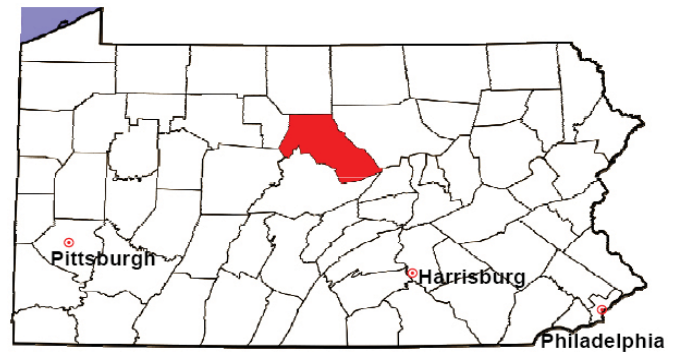
2008 Relinquishments/Terminations	No. of Petitions	%
Cases Pending 1/1/08	10	
New Cases Filed in '08	11	
Cases Available for Processing	21	
Processed By:		
Contested before a Judge	1	8.3%
Uncontested	11	91.7%
Other	0	0.0%
Cases Processed	12	100.0%
Cases Pending 12/31/08	9	

Relinquishments/Terminations New Cases Filed, 1998-2008



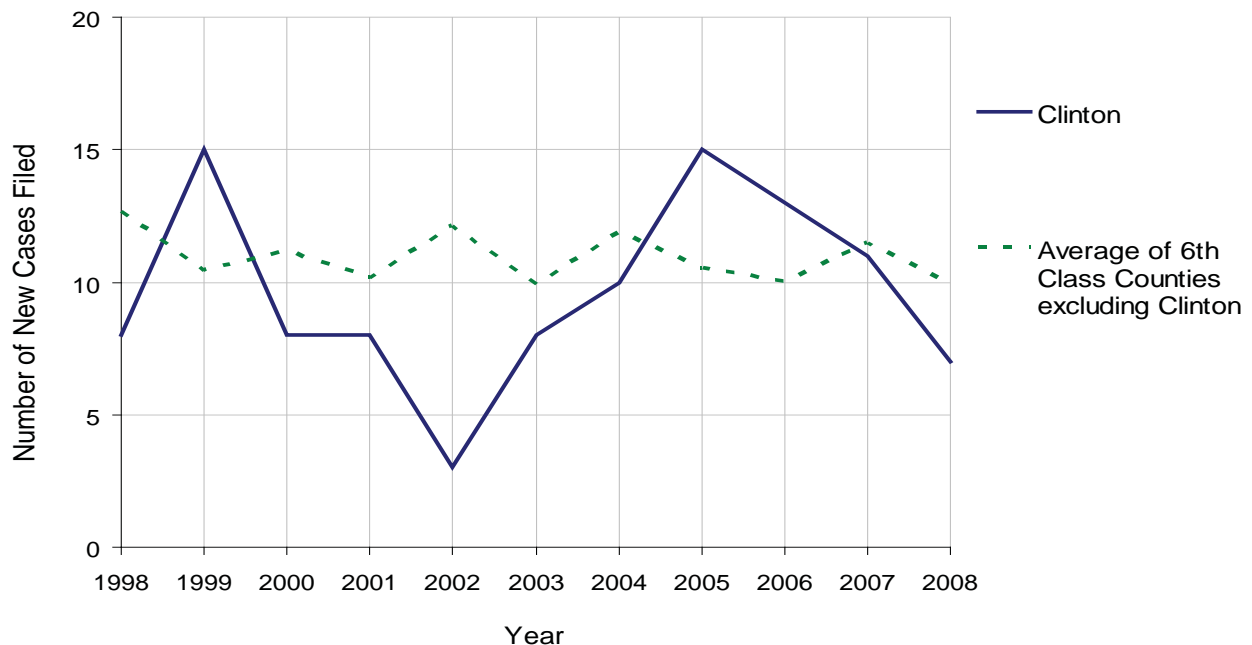
CLINTON COUNTY

2008 Population Estimate: 37,038
 Class of County: 6th
 No. of Common Pleas Court Judgeships: 2



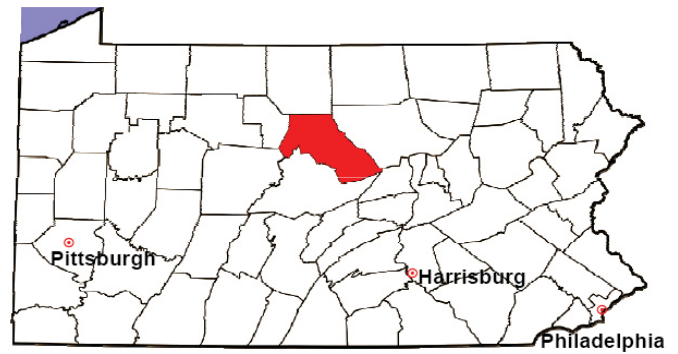
2008 Appointment of Guardians	No. of Petitions	%
Cases Pending 1/1/08	14	
New Cases Filed in '08	7	
Cases Available for Processing	21	
Processed By:		
Contested before a Judge	0	0.0%
Uncontested	12	100.0%
Other	0	0.0%
Cases Processed	12	100.0%
Cases Pending 12/31/08	9	

Appointment of Guardians New Cases Filed, 1998-2008



CLINTON COUNTY

2008 Population Estimate: 37,038
 Class of County: 6th
 No. of Common Pleas Court Judgeships: 2



2008 Jury Activity & Performance Measures		
A. Juror Days	427	
B. Number Sent to Voir Dire	560	
Voir Dire Attendance Rate $(B/A * 100)$		131.1%
C. Number of Voir Dires Started	12	
Juror Days Per Voir Dire Starts (A/C)		36
D. Number of Jurors Selected	166	
Juror Selection Rate $(D/B * 100)$		29.6%
E. Number of Jury Trials Started	6	
Juror Days Per Trial Starts (A/E)		71
Number of Voir Dires Not Resulting in Trial $(C-E)$		6
Percent Voir Dires Not Resulting in Trial $(C-E)/C * 100$		50.0%
F. Pool Days	5	
G. Zero Panel Days	0	
Percent Zero Panel Days $(G/F * 100)$		0.0%
H. Total Juror Fees Incurred	\$12,705	
Average Juror Fees Per Trial (H/E)		\$2,118

Average Juror Fees Per Trial, 1998-2008

