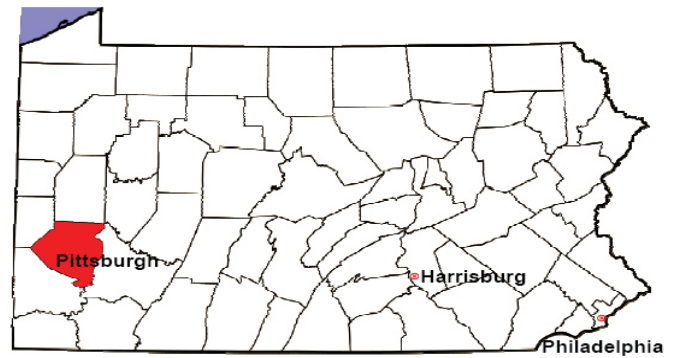


ALLEGHENY COUNTY

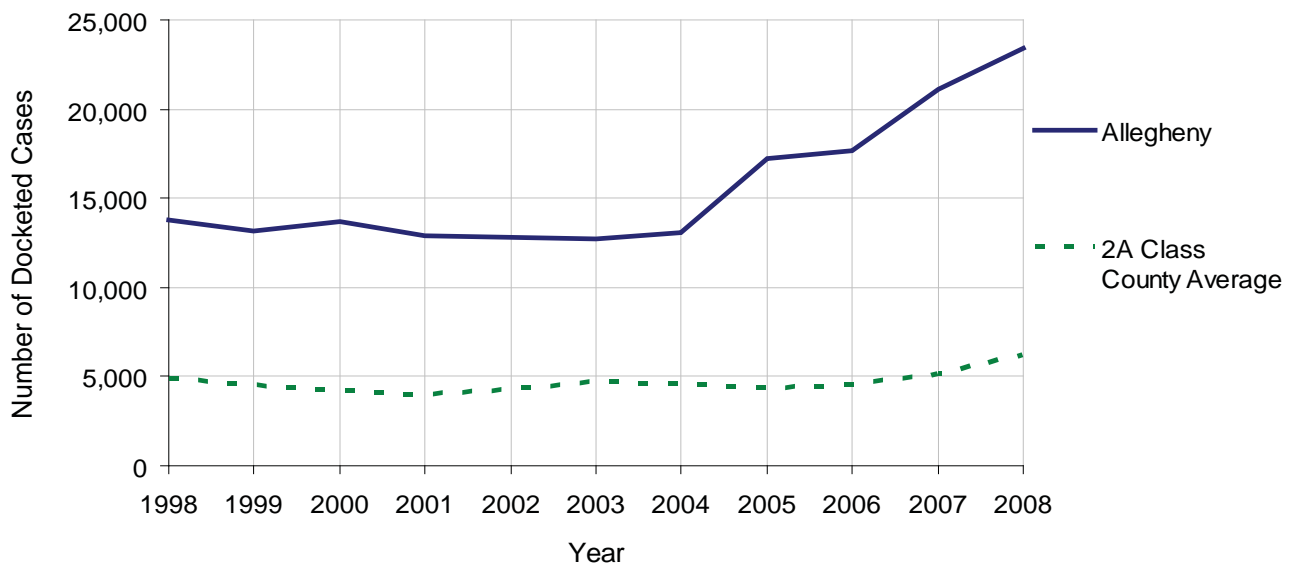
2008 Population Estimate: 1,215,103
 Class of County: 2nd
 No. of Common Pleas Court Judgeships: 43



2008 Civil	Civil Action		
Docketed Cases	23,411		
Arbitrated Cases	3,360		
Trial-Ready Cases:	Civil Action	Other	Total
Cases Pending 1/1/08	3,658	2,686	6,344
Became Trial Ready in '08	7,702	6,740	14,442
Restored to Trial List	3	0	3
Appeals from Arbitration	415	371	786
Cases Available for Trial	11,778	9,797	21,575
Disposed By:			
Settlement	7,443	6,738	14,181
Non-Jury Trial	105	144	249
Jury Trial	121	3	124
Stricken from Trial List	0	6	6
Other	321	26	347
Cases Disposed	7,990	6,917	14,907
Cases Pending 12/31/08	3,788	2,880	6,668

Age of Trial-Ready Cases as of 12/31/08 (Civil Action Only)		
0-6 months	468	12%
7-12 months	351	9%
13-18 months	166	4%
19-24 months	171	5%
25-30 months	134	4%
31-36 months	206	5%
Over 36 months	2,292	61%
Total	3,788	100%

Docketed Cases, 1998-2008

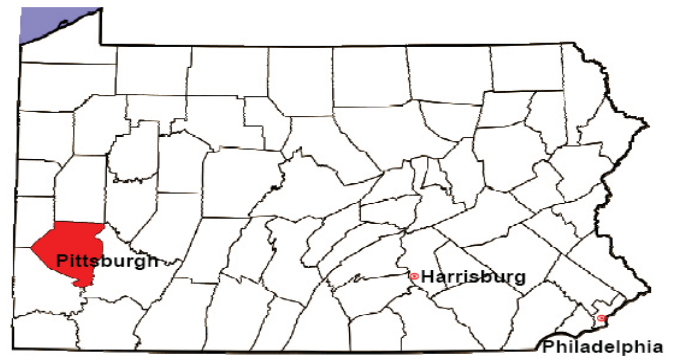


ALLEGHENY COUNTY

2008 Population Estimate: 1,215,103

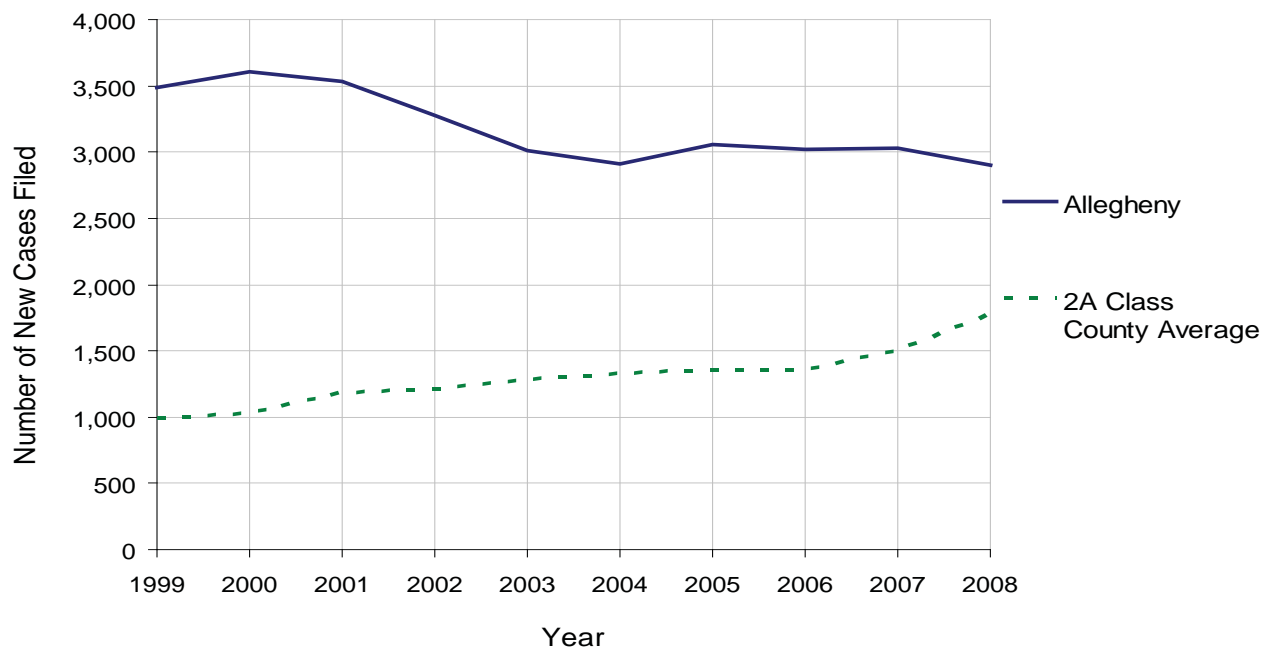
Class of County: 2nd

No. of Common Pleas Court Judgeships: 43



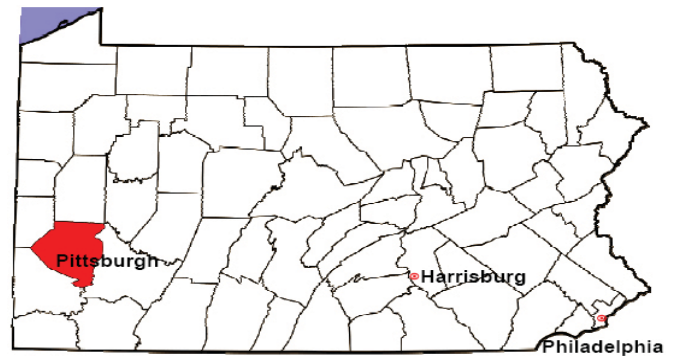
2008 Protection From Abuse	No. of Petitions	%
Cases Pending 1/1/08	76	
New Cases Filed in '08	2,902	
Cases Available for Processing	2,978	
Processed By:		
Final Order After Hearing	497	17.0%
Final Order by Stipulation or Agreement	668	22.8%
Dismissal	541	18.5%
Withdrawal	1,221	41.7%
Other	2	0.1%
Cases Processed	2,929	100.0%
Cases Pending 12/31/08	49	

PFA New Cases Filed, 1999-2008



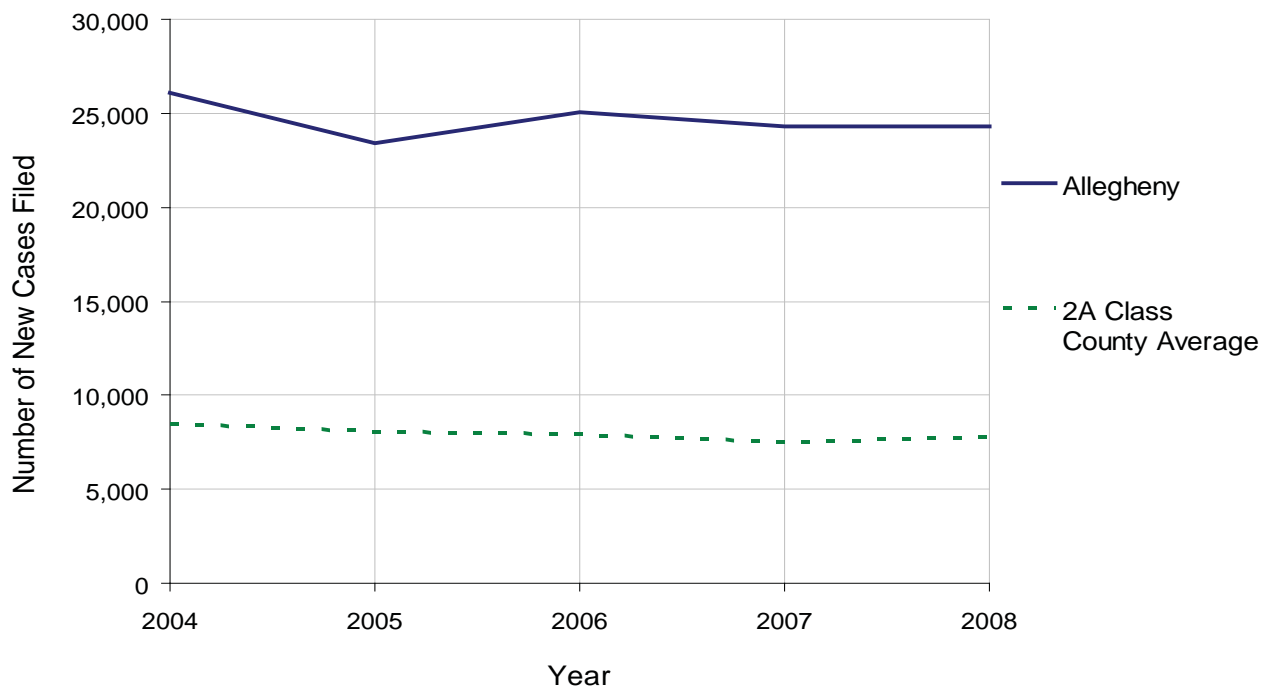
ALLEGHENY COUNTY

2008 Population Estimate: 1,215,103
 Class of County: 2nd
 No. of Common Pleas Court Judgeships: 43



2008 Spousal & Child Support	No. of Petitions	%
Cases Pending 1/1/08	14,779	
New Cases Filed in '08	24,293	
Dockets Transferred In (+)	127	
Dockets Transferred Out (-)	258	
Cases Available for Processing	38,941	
Processed By:		
Judge	162	0.6%
Intake Officer	22,020	77.4%
Hearing Officer	6,238	21.9%
Other	13	0.0%
Cases Processed	28,433	100.0%
Cases Pending 12/31/08	10,508	

Spousal & Child Support New Cases Filed, 1998-2008

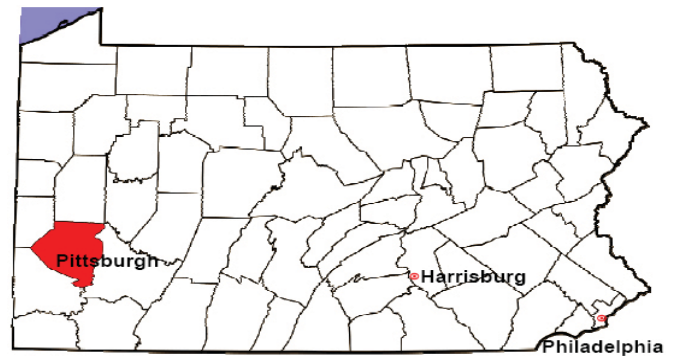


ALLEGHENY COUNTY

2008 Population Estimate: 1,215,103

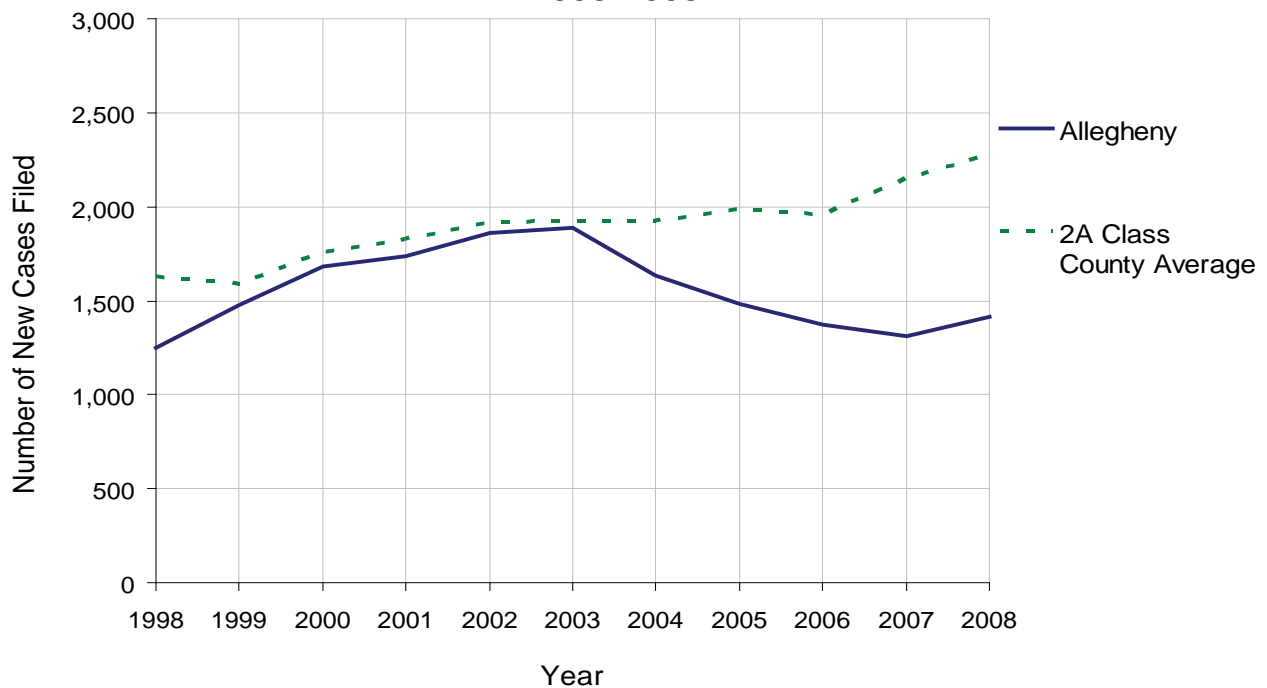
Class of County: 2nd

No. of Common Pleas Court Judgeships: 43



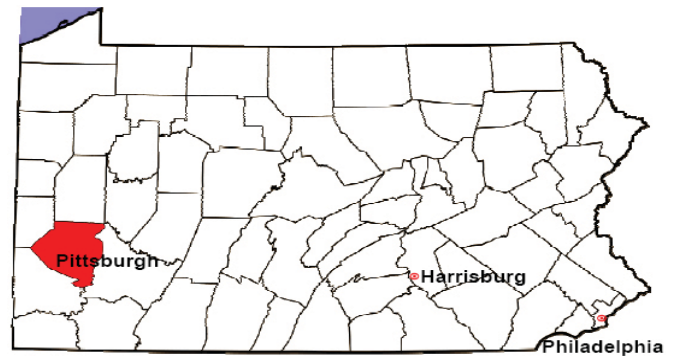
2008 Custody/Partial Custody/Visitation	No. of Petitions	%
Cases Pending 1/1/08	3	
New Cases Filed in '08	1,412	
Cases Available for Processing	1,415	
Processed By:		
Judge	445	33.7%
Non-Judicial Officer	866	65.6%
Other	9	0.7%
Cases Processed	1,320	100.0%
Cases Pending 12/31/08	95	

Custody/Partial Custody/Visitation New Cases Filed
1998-2008



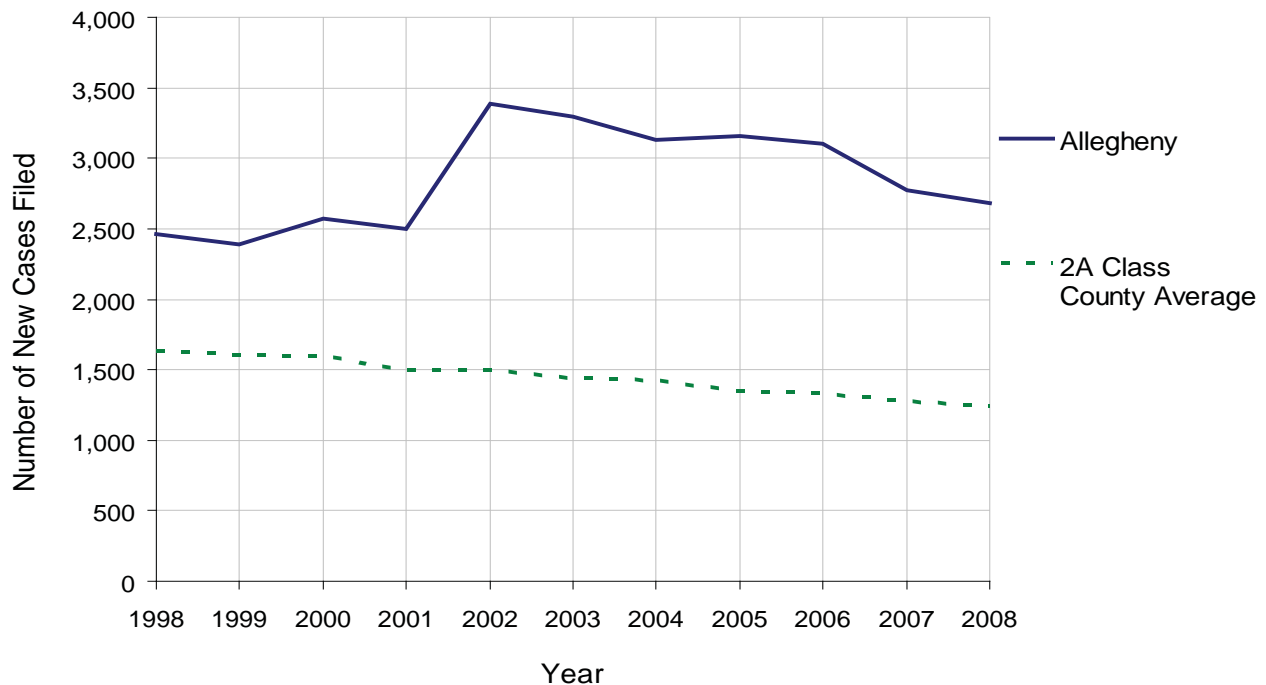
ALLEGHENY COUNTY

2008 Population Estimate: 1,215,103
 Class of County: 2nd
 No. of Common Pleas Court Judgeships: 43



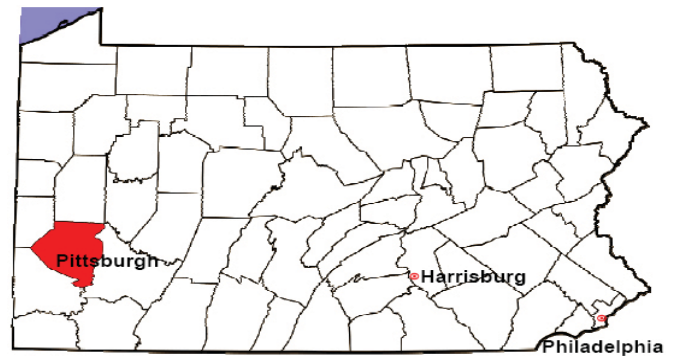
2008 Divorce	No. of Petitions	%
Cases Pending 1/1/08	4,425	
New Cases Filed in '08	2,682	
Cases Available for Processing	7,107	
Processed By:		
Contested Before a Judge	583	21.7%
Contested Before a Master	49	1.8%
Uncontested	2,026	75.5%
Other	24	0.9%
Cases Processed	2,682	100.0%
Cases Pending 12/31/08	4,425	

Divorce New Cases Filed, 1998-2008



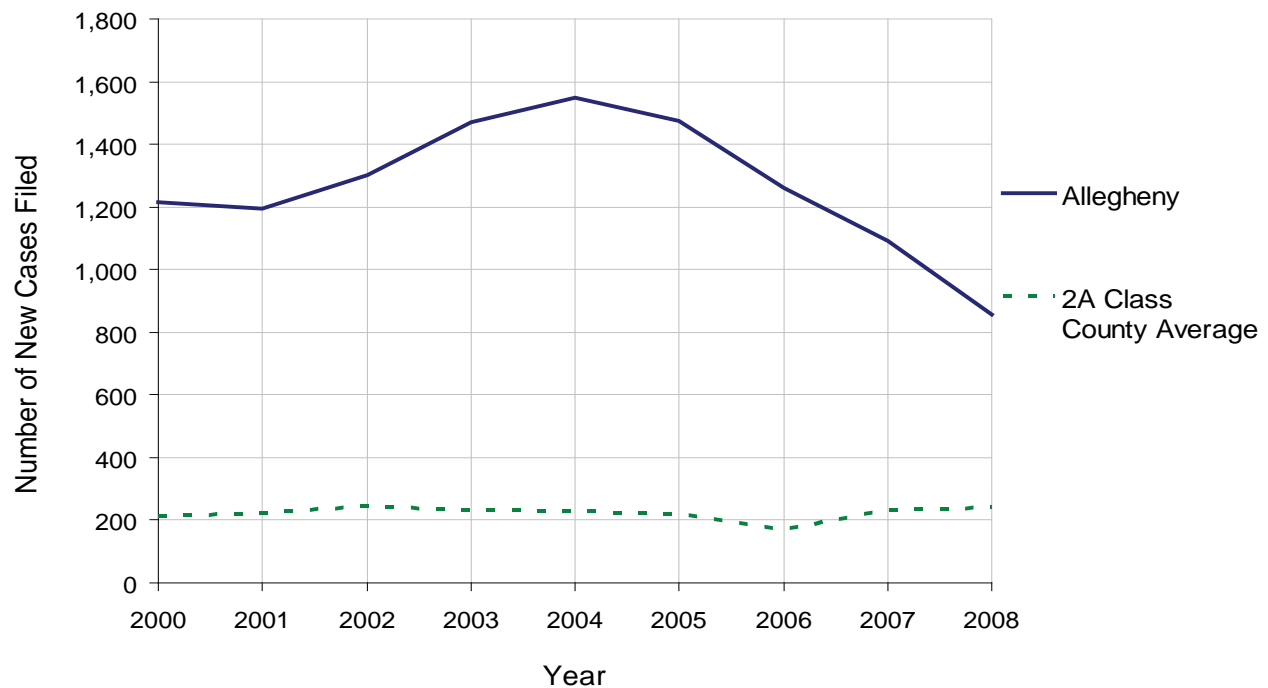
ALLEGHENY COUNTY

2008 Population Estimate: 1,215,103
 Class of County: 2nd
 No. of Common Pleas Court Judgeships: 43



2008 Juvenile Dependency Abuse/Neglect	No. of Petitions	%
Cases Pending 1/1/08	1,907	
New Cases Filed in '08	855	
Cases Available for Processing	2,762	
Processed By:		
Judge	855	100.0%
Non-Judicial Officer	0	0.0%
Other	0	0.0%
Cases Processed	855	100.0%
Cases Pending 12/31/08	1,907	

Abuse/Neglect New Cases Filed, 2000-2008

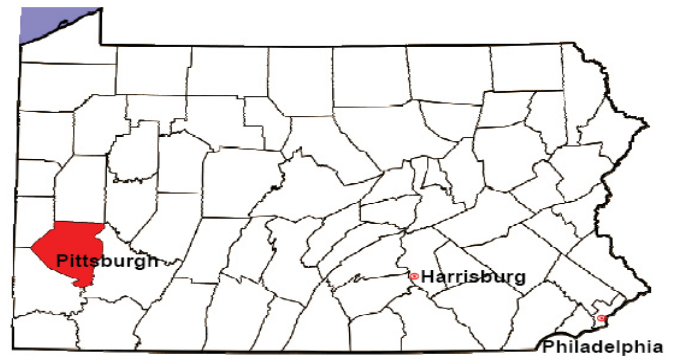


ALLEGHENY COUNTY

2008 Population Estimate: 1,215,103

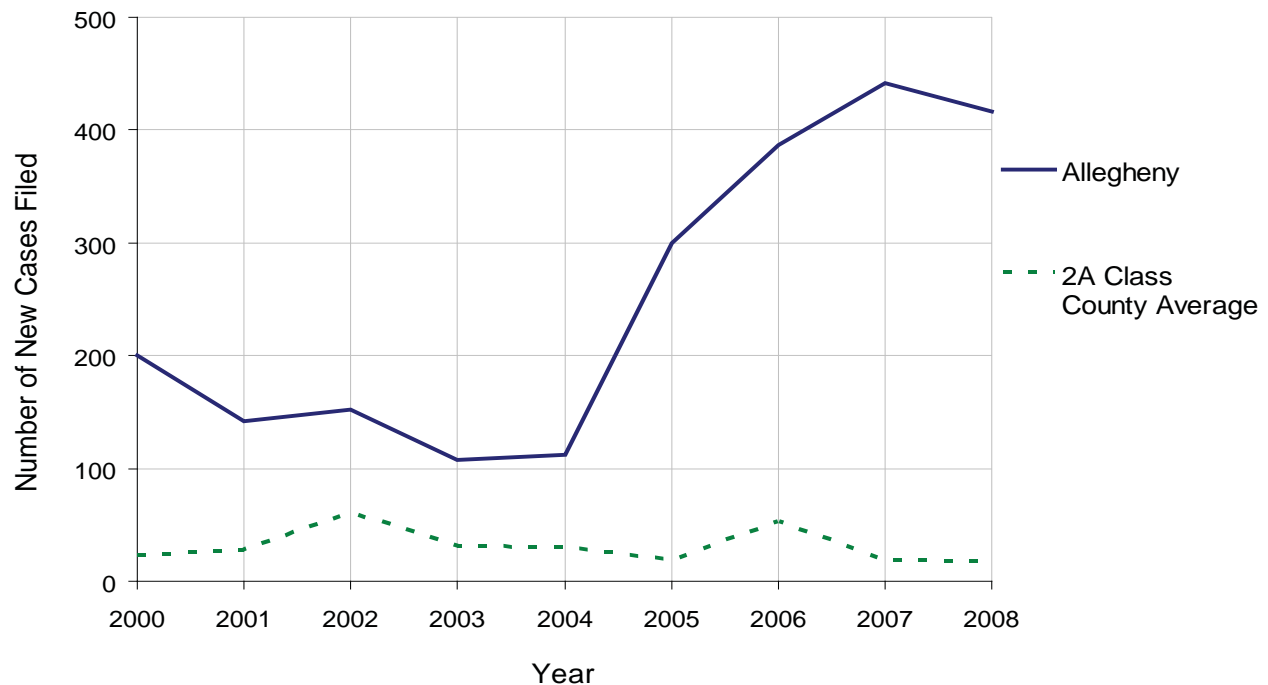
Class of County: 2nd

No. of Common Pleas Court Judgeships: 43



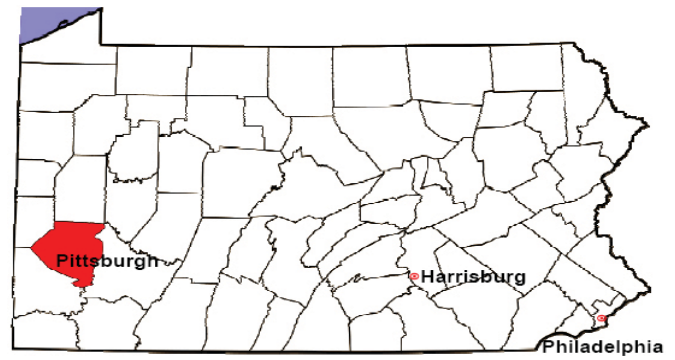
2008 Juvenile Dependency Status Offenses	No. of Petitions	%
Cases Pending 1/1/08	371	
New Cases Filed in '08	416	
Cases Available for Processing	787	
Processed By:		
Judge	299	71.9%
Non-Judicial Officer	117	28.1%
Other	0	0.0%
Cases Processed	416	100.0%
Cases Pending 12/31/08	371	

Status Offenses New Cases Filed, 2000-2008



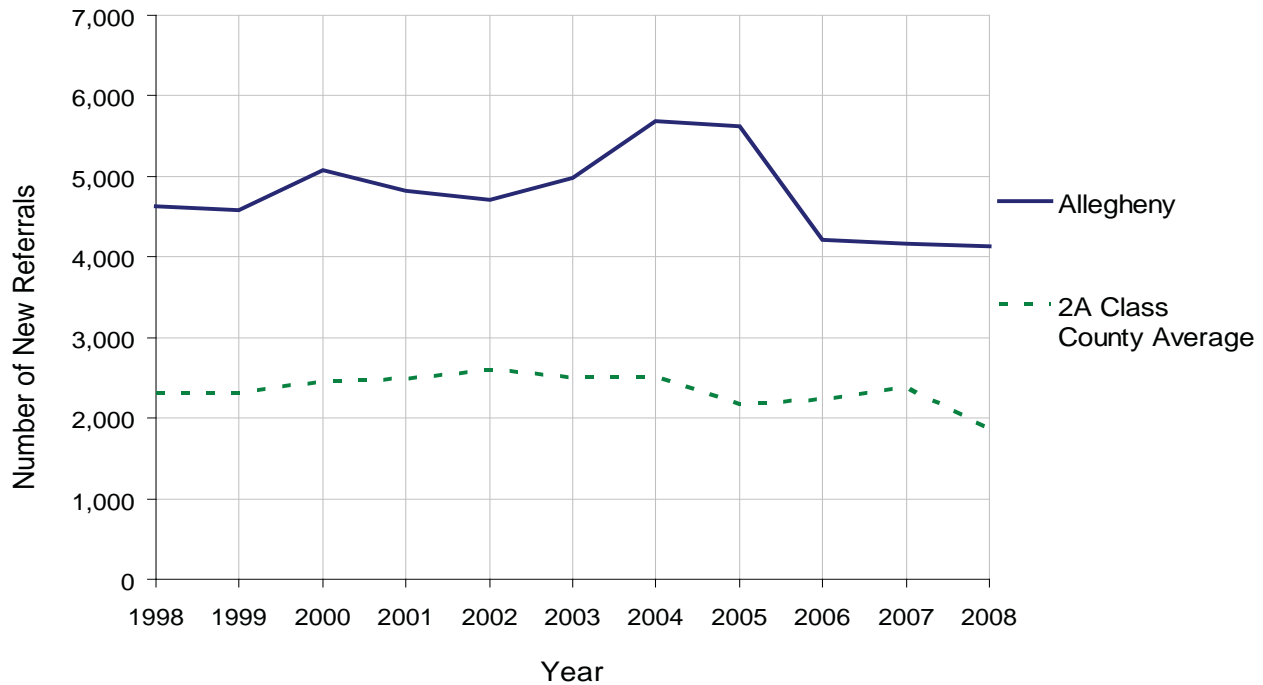
ALLEGHENY COUNTY

2008 Population Estimate: 1,215,103
 Class of County: 2nd
 No. of Common Pleas Court Judgeships: 43



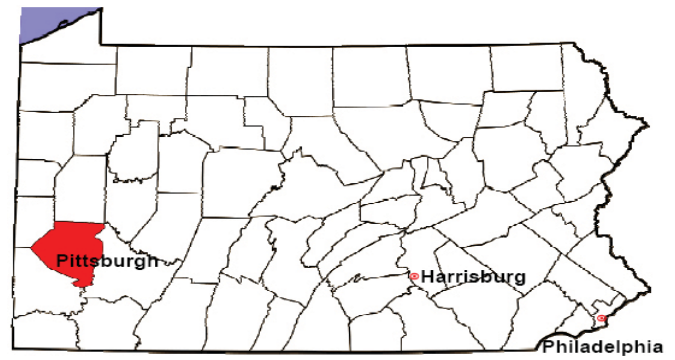
2008 Juvenile Delinquency	No. of Referrals	%
Cases Pending 1/1/08	1,768	
New Referrals in '08	4,138	
Cases Available for Processing	5,906	
Processed By:		
Judge	2,905	69.6%
Non-Judicial Officer	1,240	29.7%
Other	31	0.7%
Cases Processed	4,176	100.0%
Cases Pending 12/31/08	1,730	

Juvenile Delinquency New Referrals, 1998-2008



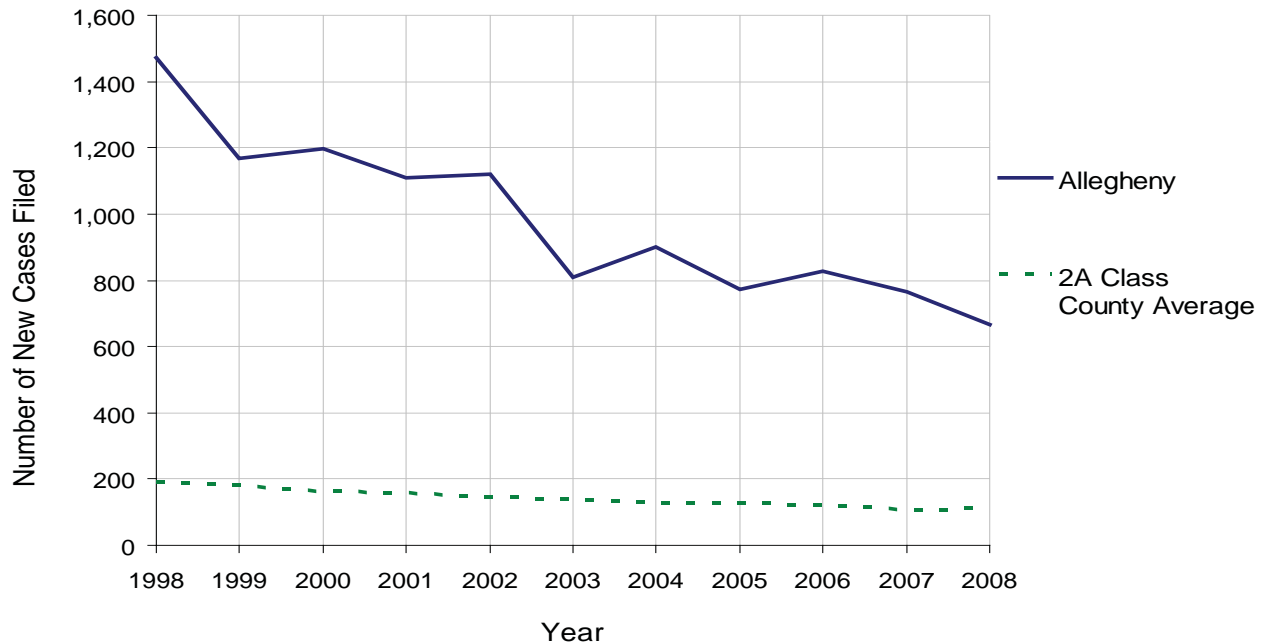
ALLEGHENY COUNTY

2008 Population Estimate: 1,215,103
 Class of County: 2nd
 No. of Common Pleas Court Judgeships: 43



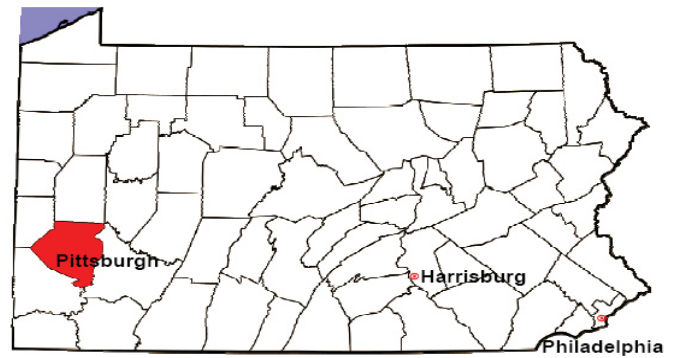
2008 Accounts	No. of Accounts	%
Cases Pending 1/1/08	23	
New Cases Filed in '08	665	
Cases Available for Processing	688	
Processed By:		
Contested before a Judge	0	0.0%
Contested before a Non-Judicial Officer	0	0.0%
Uncontested	603	100.0%
Other	0	0.0%
Cases Processed	603	100.0%
Cases Pending 12/31/08	85	

Accounts New Cases Filed, 1998-2008



ALLEGHENY COUNTY

2008 Population Estimate: 1,215,103
 Class of County: 2nd
 No. of Common Pleas Court Judgeships: 43

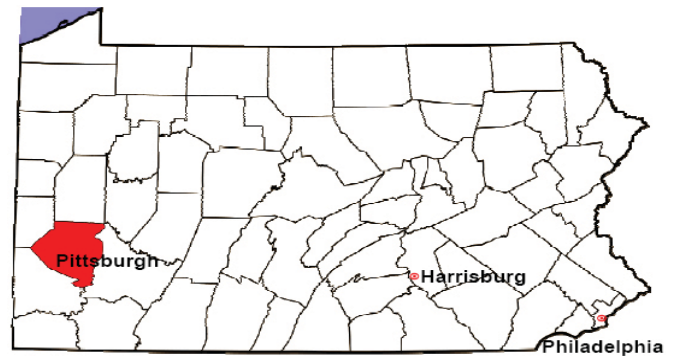


2008 Adoptions		No. of Cases	%
Cases Pending 1/1/08		132	
New Cases Filed in '08		429	
Cases Available for Processing		561	
Processed By:			
Contested before a Judge	Granted	0	0.0%
	Denied	0	0.0%
Uncontested	Granted	421	88.6%
	Denied	0	0.0%
Other		54	11.4%
Cases Processed		475	100.0%
Cases Pending 12/31/08		86	

Note: Prior to 2008, each petition was counted as one new case, regardless of the number of children listed on the petition. Starting in 2008, each child listed on a petition is counted as a separate case. Therefore, statistics for 2008 should not be compared with those for previous years.

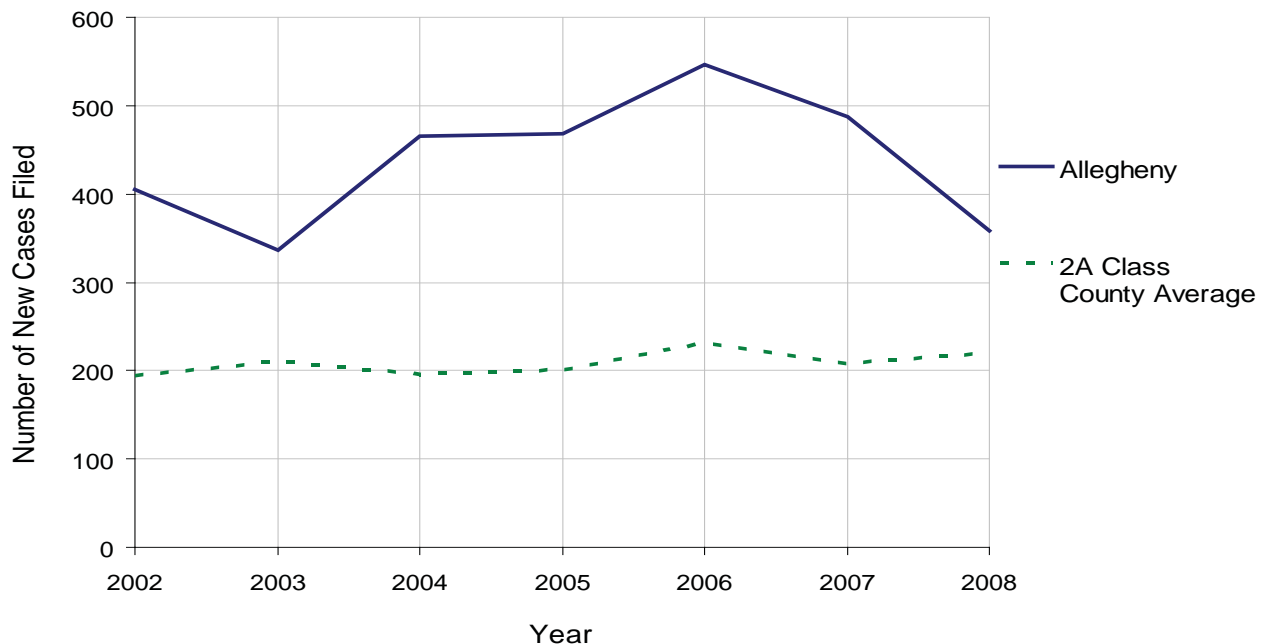
ALLEGHENY COUNTY

2008 Population Estimate: 1,215,103
 Class of County: 2nd
 No. of Common Pleas Court Judgeships: 43



2008 Relinquishments/Terminations	No. of Petitions	%
Cases Pending 1/1/08	245	
New Cases Filed in '08	359	
Cases Available for Processing	604	
Processed By:		
Contested before a Judge	98	23.6%
Uncontested	235	56.5%
Other	83	20.0%
Cases Processed	416	100.0%
Cases Pending 12/31/08	188	

Relinquishments/Terminations New Cases Filed, 2002-2008

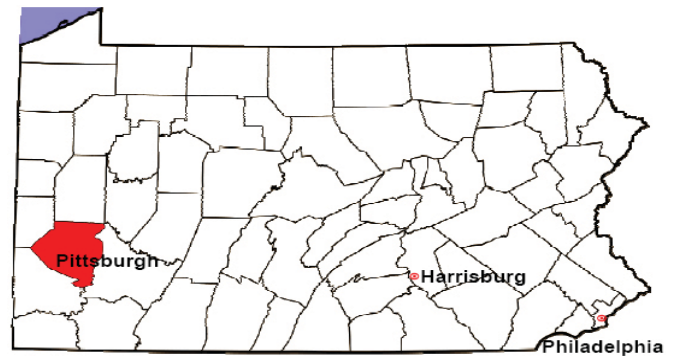


ALLEGHENY COUNTY

2008 Population Estimate: 1,215,103

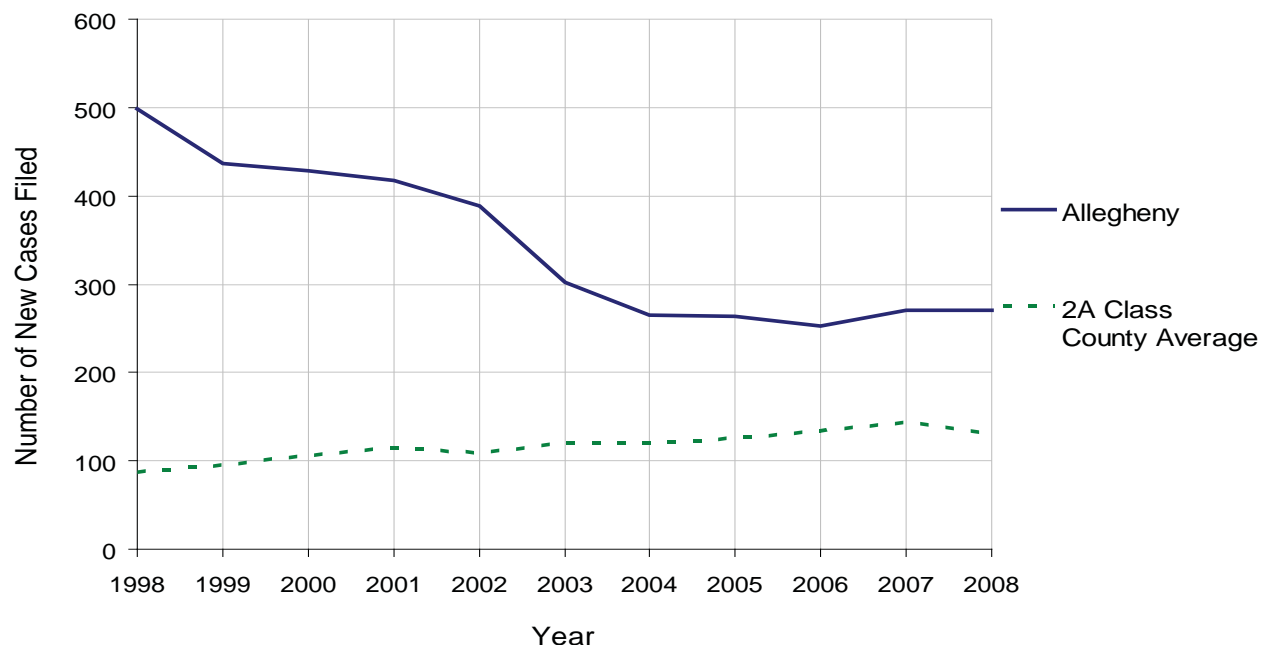
Class of County: 2nd

No. of Common Pleas Court Judgeships: 43



2008 Appointment of Guardians	No. of Petitions	%
Cases Pending 1/1/08	29	
New Cases Filed in '08	270	
Cases Available for Processing	299	
Processed By:		
Contested before a Judge	24	8.3%
Uncontested	264	91.7%
Other	0	0.0%
Cases Processed	288	100.0%
Cases Pending 12/31/08	11	

Appointment of Guardians New Cases Filed, 1998-2008

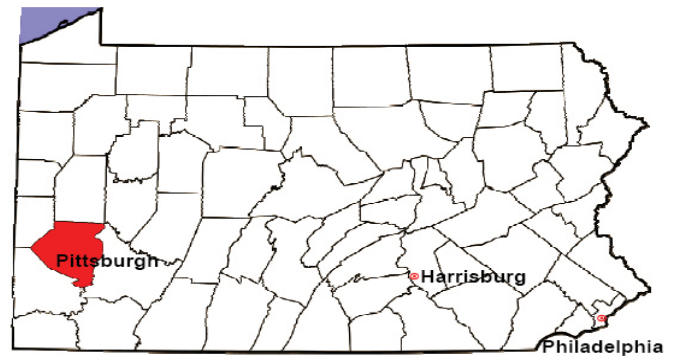


ALLEGHENY COUNTY

2008 Population Estimate: 1,215,103

Class of County: 2nd

No. of Common Pleas Court Judgeships: 43



2008 Jury Activity & Performance Measures

A. Juror Days	22,756
B. Number Sent to Voir Dire	16,288
Voir Dire Attendance Rate $(B/A * 100)$	71.6%
C. Number of Voir Dires Started	540
Juror Days Per Voir Dire Starts (A/C)	42
D. Number of Jurors Selected	5,551
Juror Selection Rate $(D/B * 100)$	34.1%
E. Number of Jury Trials Started	412
Juror Days Per Trial Starts (A/E)	55
Number of Voir Dires Not Resulting in Trial $(C-E)$	128
Percent Voir Dires Not Resulting in Trial $(C-E)/C * 100$	23.7%
F. Pool Days	226
G. Zero Panel Days	29
Percent Zero Panel Days $(G/F * 100)$	12.8%
H. Total Juror Fees Incurred	\$471,857
Average Juror Fees Per Trial (H/E)	\$1,145

Average Juror Fees Per Trial, 1998-2008

