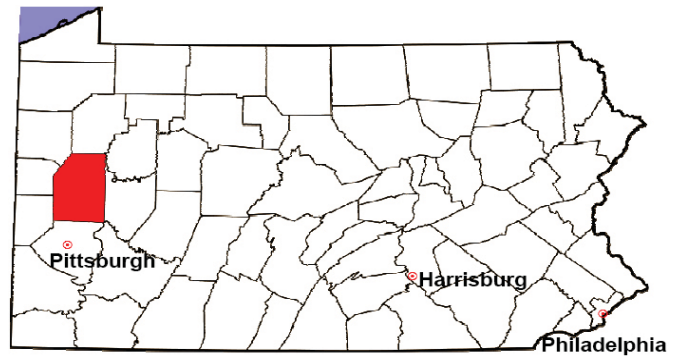


BUTLER COUNTY

2008 Population Estimate: 182,902

Class of County: 4th

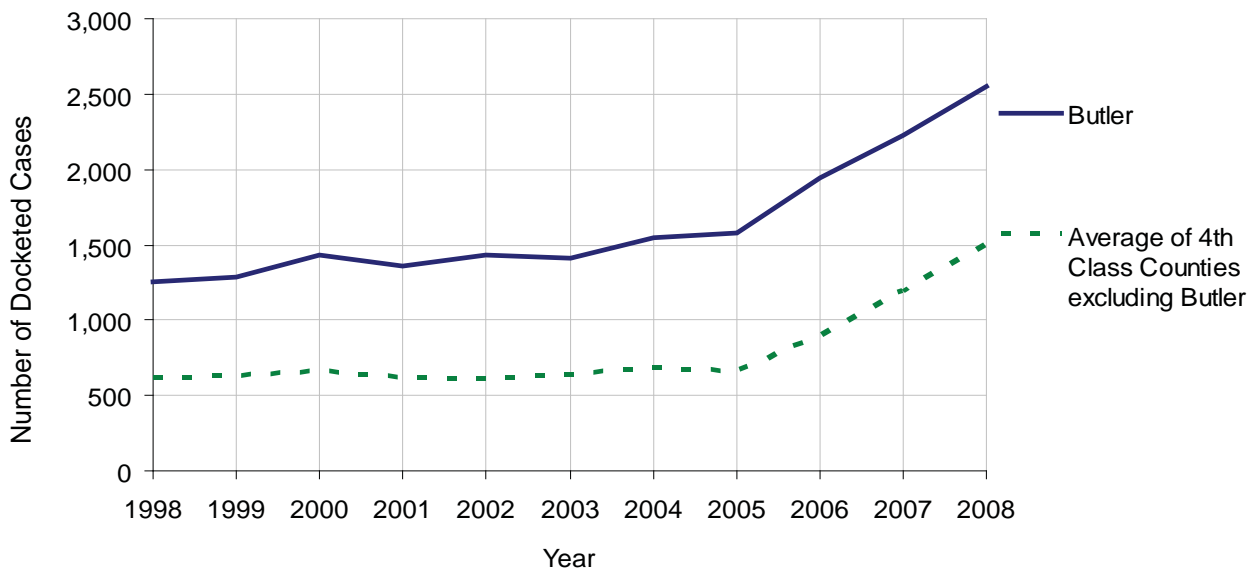
No. of Common Pleas Court Judgeships: 6



2008 Civil		Civil Action		
Docketed Cases		2,552		
Arbitrated Cases		94		
Trial-Ready Cases:		Civil Action	Other	Total
Cases Pending 1/1/08		35	0	35
Became Trial Ready in '08		82	0	82
Restored to Trial List		0	0	0
Appeals from Arbitration		14	0	14
Cases Available for Trial		131	0	131
Disposed By:				
Settlement		64	0	64
Non-Jury Trial		4	0	4
Jury Trial		13	0	13
Stricken from Trial List		11	0	11
Other		5	0	5
Cases Disposed		97	0	97
Cases Pending 12/31/08		34	0	34

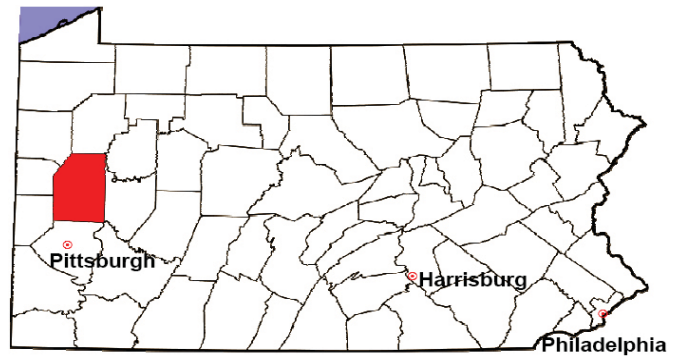
Age of Trial-Ready Cases as of 12/31/08 (Civil Action Only)		
0-6 months	28	82%
7-12 months	4	12%
13-18 months	2	6%
19-24 months	0	0%
25-30 months	0	0%
31-36 months	0	0%
Over 36 months	0	0%
Total	34	100%

Docketed Cases, 1998-2008



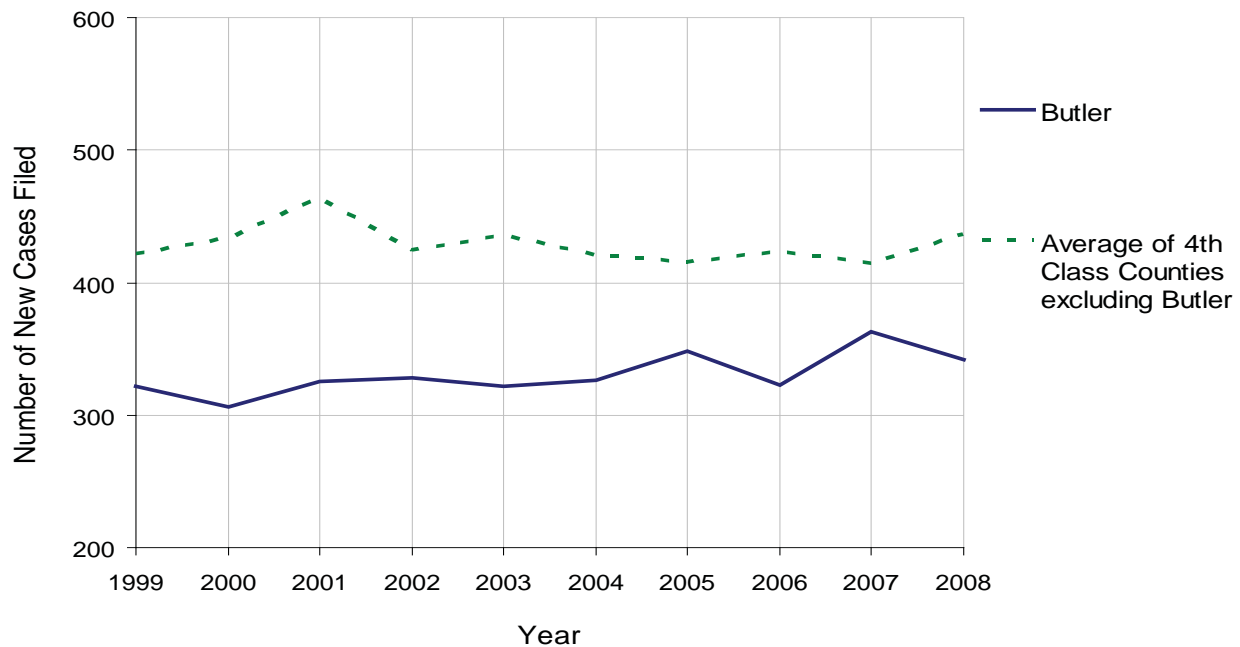
BUTLER COUNTY

2008 Population Estimate: 182,902
 Class of County: 4th
 No. of Common Pleas Court Judgeships: 6



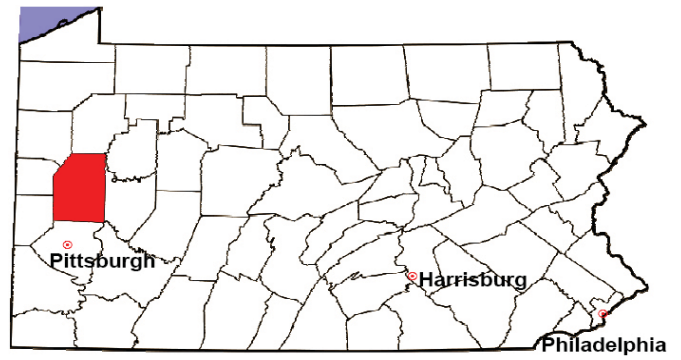
2008 Protection From Abuse	No. of Petitions	%
Cases Pending 1/1/08	36	
New Cases Filed in '08	342	
Cases Available for Processing	378	
Processed By:		
Final Order After Hearing	51	15.9%
Final Order by Stipulation or Agreement	94	29.4%
Dismissal	72	22.5%
Withdrawal	103	32.2%
Other	0	0.0%
Cases Processed	320	100.0%
Cases Pending 12/31/08	58	

PFA New Cases Filed, 1999-2008



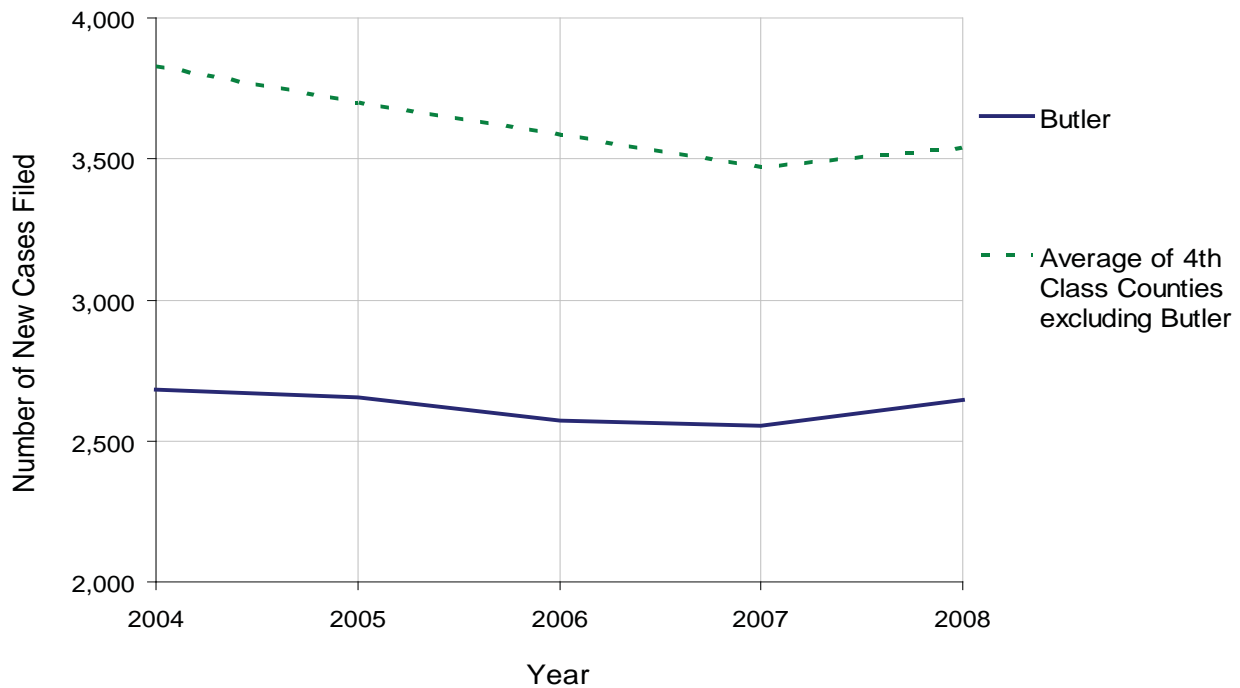
BUTLER COUNTY

2008 Population Estimate: 182,902
 Class of County: 4th
 No. of Common Pleas Court Judgeships: 6



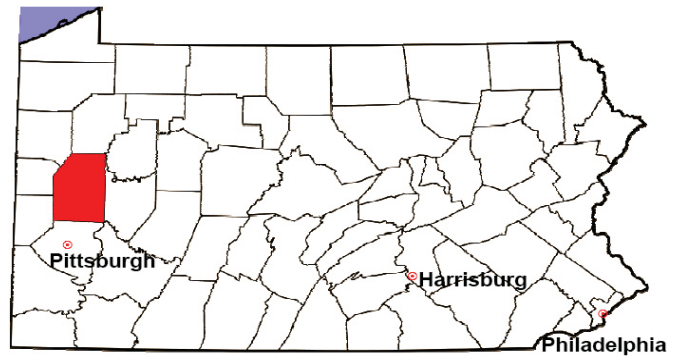
2008 Spousal & Child Support	No. of Petitions	%
Cases Pending 1/1/08	403	
New Cases Filed in '08	2,647	
Dockets Transferred In (+)	27	
Dockets Transferred Out (-)	33	
Cases Available for Processing	3,044	
Processed By:		
Judge	150	5.6%
Intake Officer	2,527	94.4%
Hearing Officer	0	0.0%
Other	1	0.0%
Cases Processed	2,678	100.0%
Cases Pending 12/31/08	366	

Spousal & Child Support New Cases Filed, 1998-2008



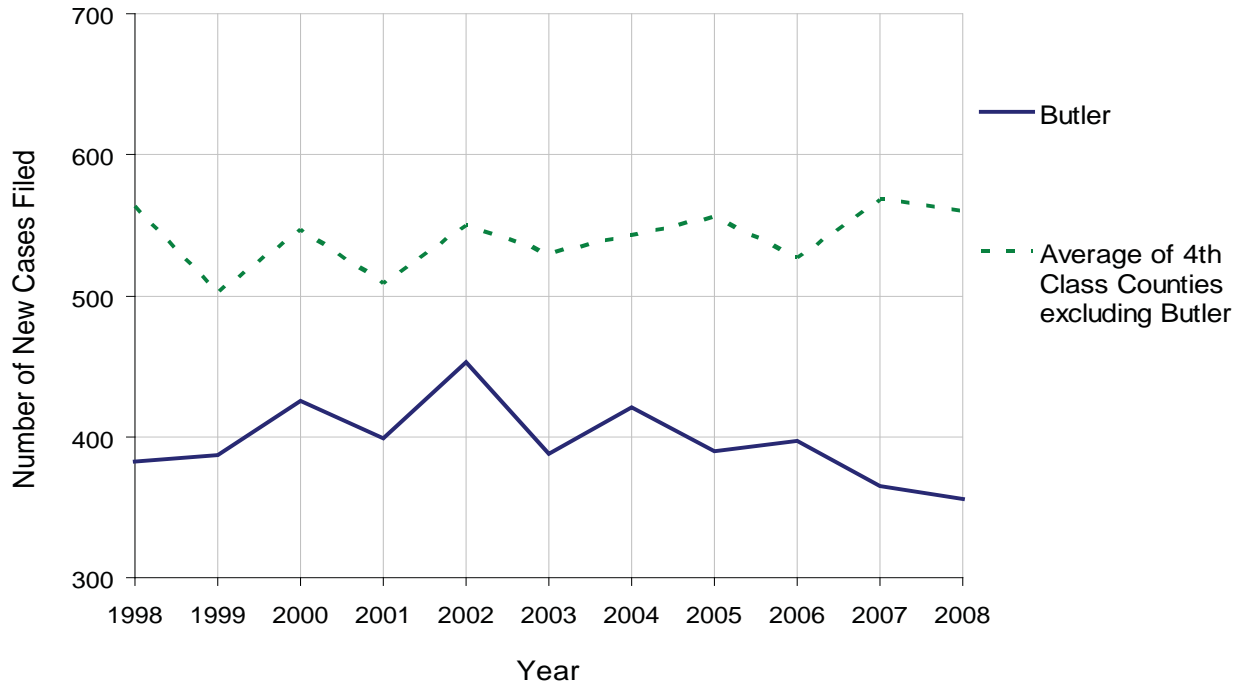
BUTLER COUNTY

2008 Population Estimate: 182,902
 Class of County: 4th
 No. of Common Pleas Court Judgeships: 6



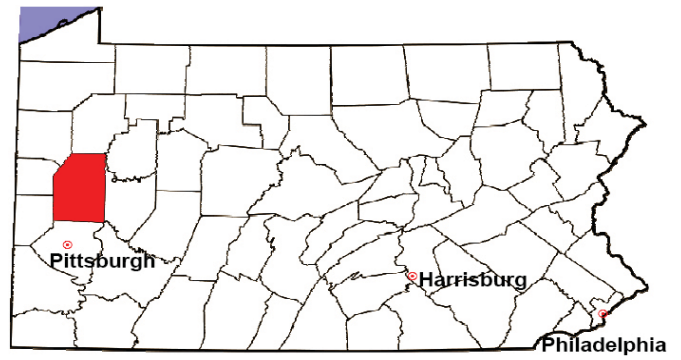
2008 Custody/Partial Custody/Visitation	No. of Petitions	%
Cases Pending 1/1/08	0	
New Cases Filed in '08	356	
Cases Available for Processing	356	
Processed By:		
Judge	43	12.1%
Non-Judicial Officer	279	78.4%
Other	34	9.6%
Cases Processed	356	100.0%
Cases Pending 12/31/08	0	

Custody/Partial Custody/Visitation New Cases Filed
 1998-2008



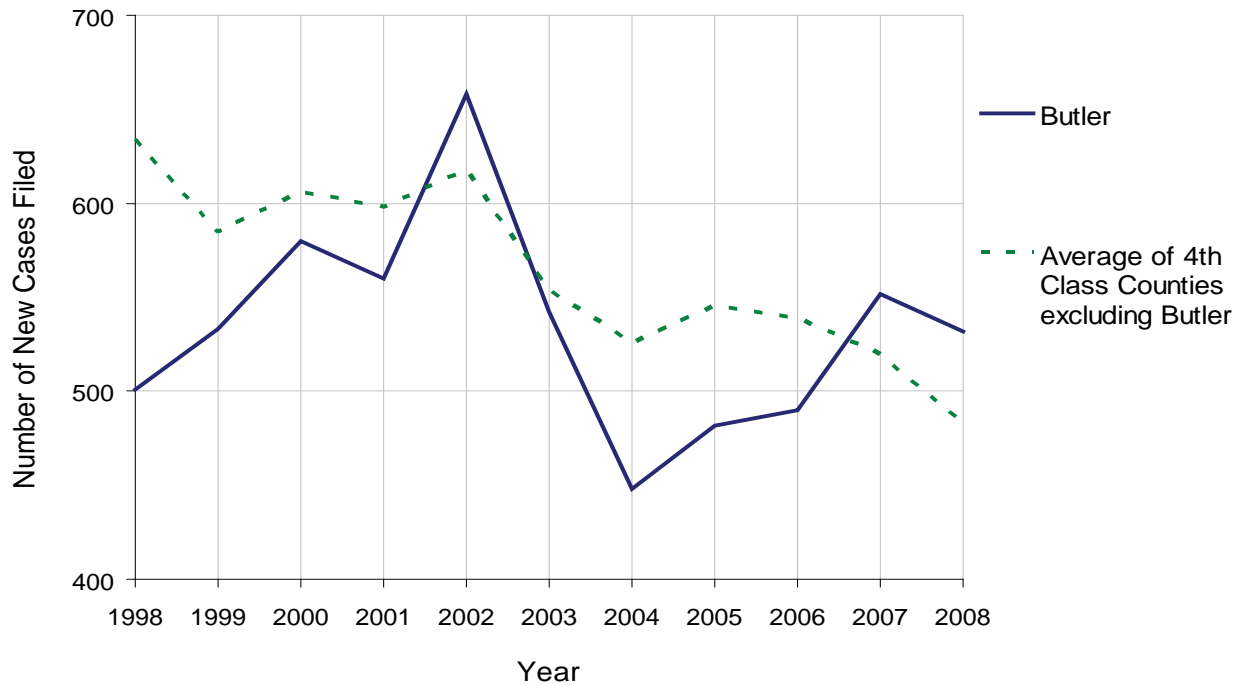
BUTLER COUNTY

2008 Population Estimate: 182,902
 Class of County: 4th
 No. of Common Pleas Court Judgeships: 6



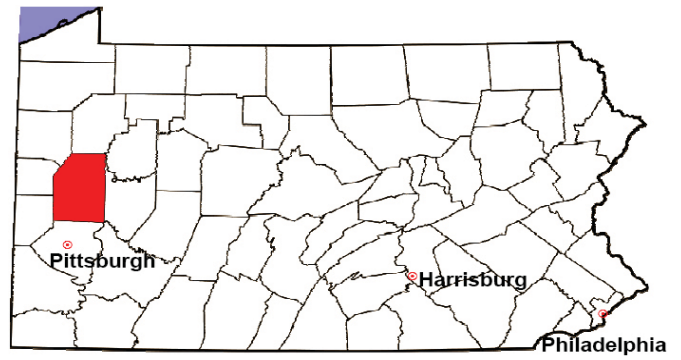
2008 Divorce	No. of Petitions	%
Cases Pending 1/1/08	1,723	
New Cases Filed in '08	532	
Cases Available for Processing	2,255	
Processed By:		
Contested Before a Judge	0	0.0%
Contested Before a Master	0	0.0%
Uncontested	473	99.8%
Other	1	0.2%
Cases Processed	474	100.0%
Cases Pending 12/31/08	1,781	

Divorce New Cases Filed, 1998-2008



BUTLER COUNTY

2008 Population Estimate: 182,902
 Class of County: 4th
 No. of Common Pleas Court Judgeships: 6



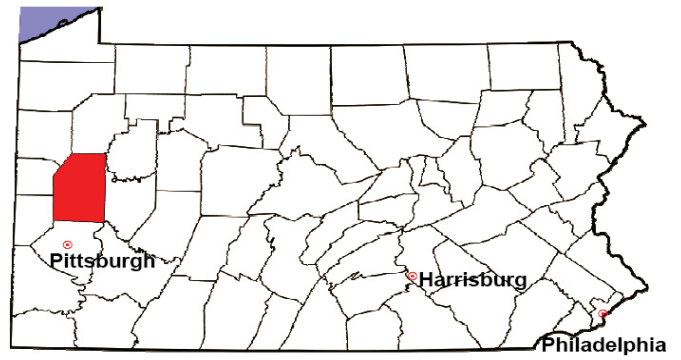
2008 Juvenile Dependency Abuse/Neglect	No. of Petitions	%
Cases Pending 1/1/08	4	
New Cases Filed in '08	237	
Cases Available for Processing	241	
Processed By:		
Judge	3	2.1%
Non-Judicial Officer	141	97.9%
Other	0	0.0%
Cases Processed	144	100.0%
Cases Pending 12/31/08	97	

Abuse/Neglect New Cases Filed, 2000-2008



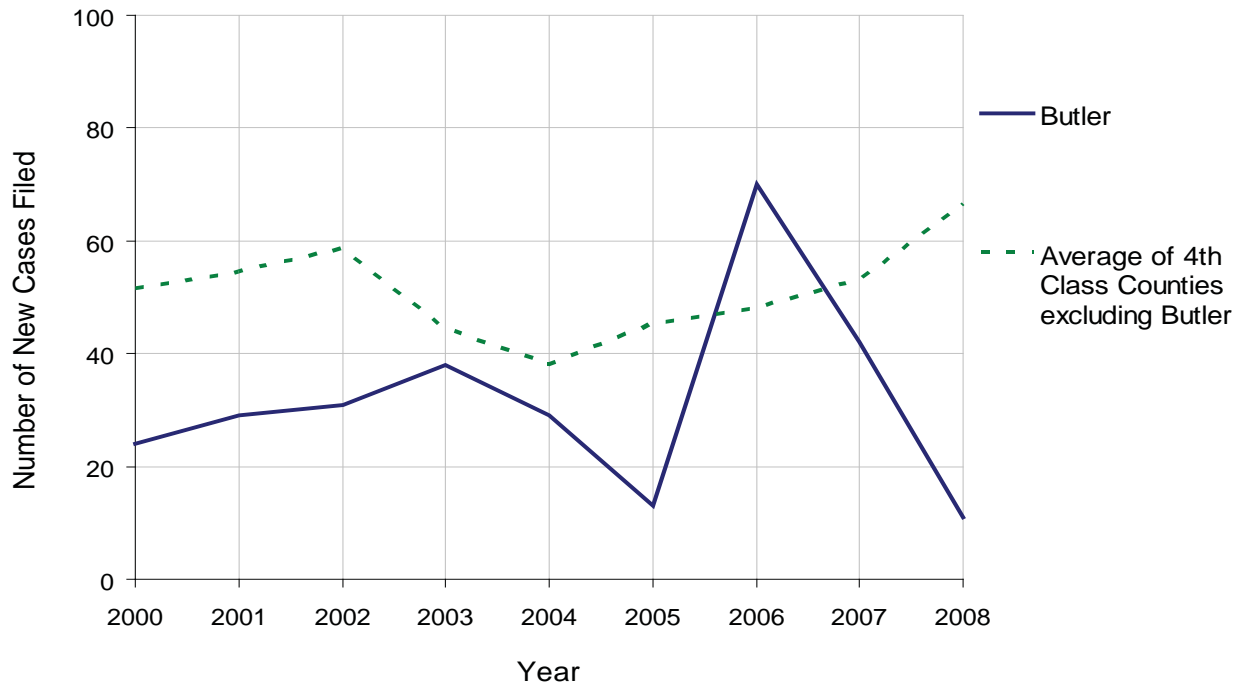
BUTLER COUNTY

2008 Population Estimate: 182,902
 Class of County: 4th
 No. of Common Pleas Court Judgeships: 6



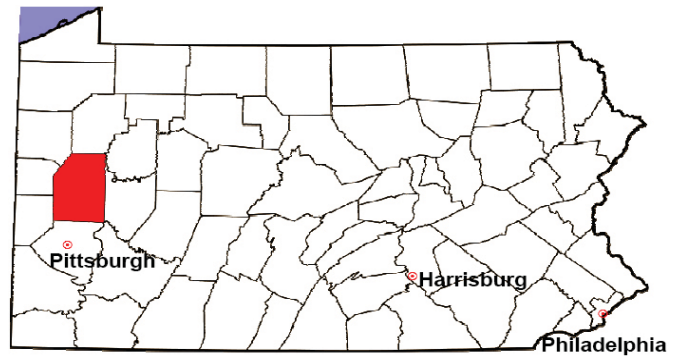
2008 Juvenile Dependency Status Offenses	No. of Petitions	%
Cases Pending 1/1/08	20	
New Cases Filed in '08	11	
Cases Available for Processing	31	
Processed By:		
Judge	0	0.0%
Non-Judicial Officer	5	100.0%
Other	0	0.0%
Cases Processed	5	100.0%
Cases Pending 12/31/08	26	

Status Offenses New Cases Filed, 2000-2008



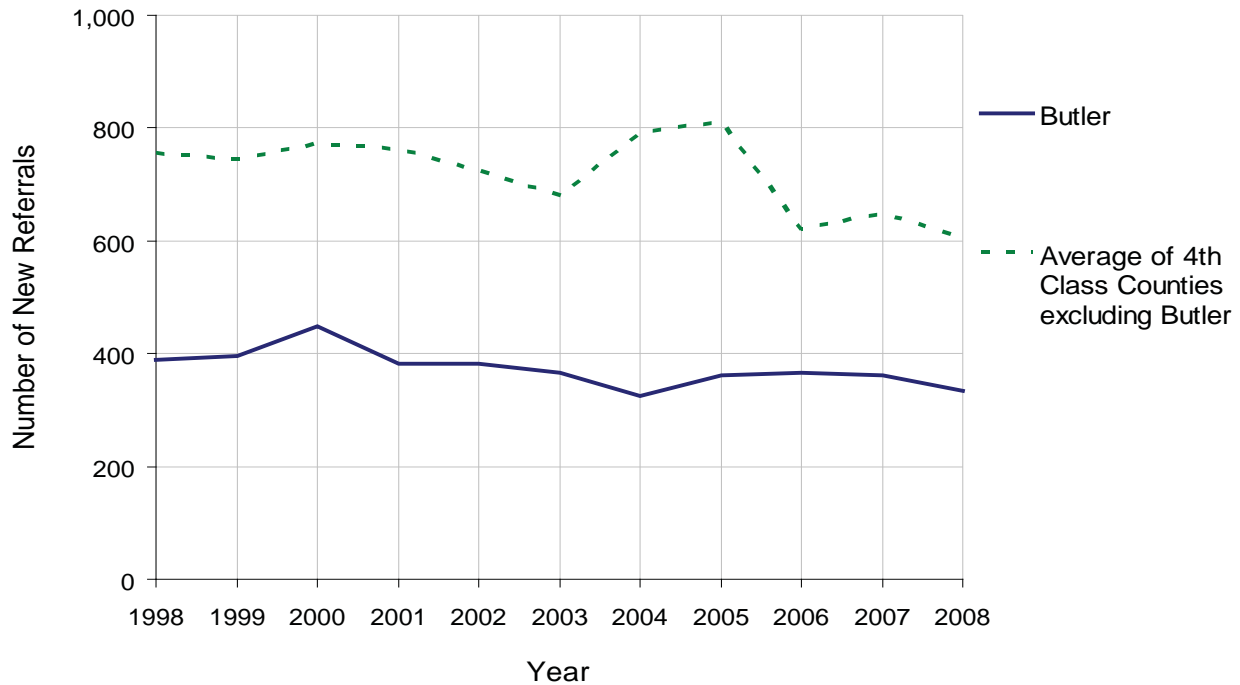
BUTLER COUNTY

2008 Population Estimate: 182,902
 Class of County: 4th
 No. of Common Pleas Court Judgeships: 6



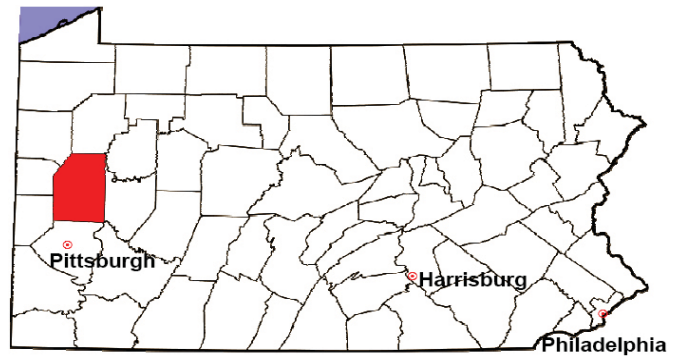
2008 Juvenile Delinquency	No. of Referrals	%
Cases Pending 1/1/08	258	
New Referrals in '08	334	
Cases Available for Processing	592	
Processed By:		
Judge	117	39.3%
Non-Judicial Officer	181	60.7%
Other	0	0.0%
Cases Processed	298	100.0%
Cases Pending 12/31/08	294	

Juvenile Delinquency New Referrals, 1998-2008



BUTLER COUNTY

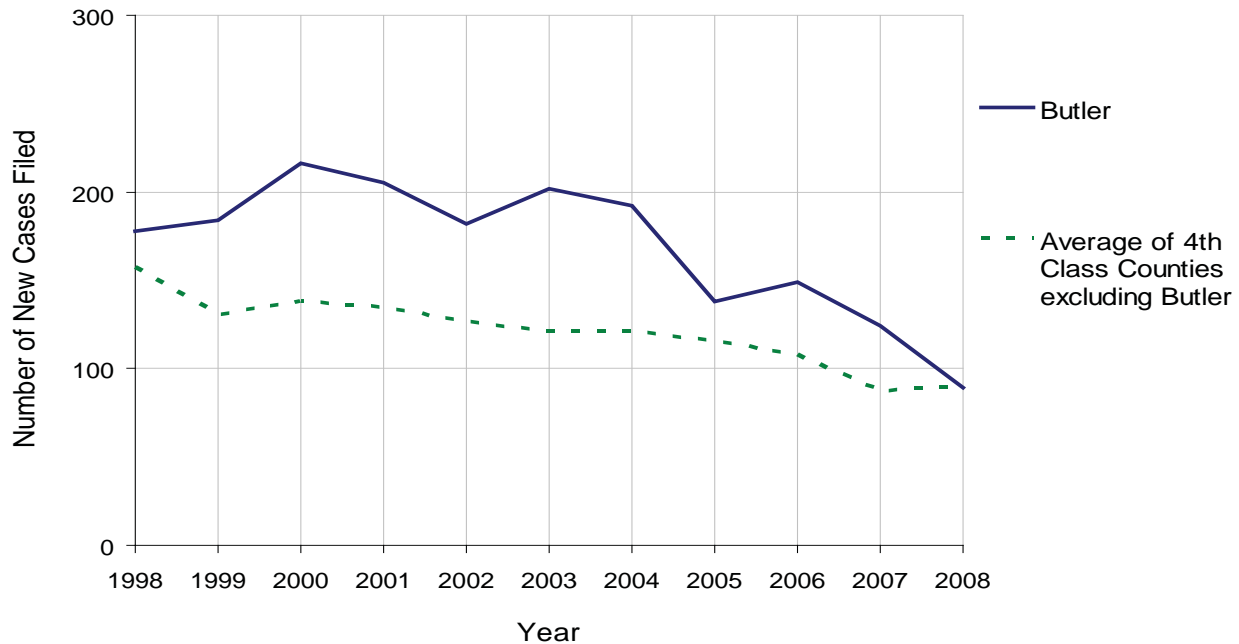
2008 Population Estimate: 182,902
 Class of County: 4th
 No. of Common Pleas Court Judgeships: 6



2008 Accounts	No. of Accounts	%
Cases Pending 1/1/08	58 ^(R)	
New Cases Filed in '08	65	
Cases Available for Processing	123	
Processed By:		
Contested before a Judge	2	4.2%
Contested before a Non-Judicial Officer	0	0.0%
Uncontested	45	93.7%
Other	1	2.1%
Cases Processed	48	100.0%
Cases Pending 12/31/08	75	

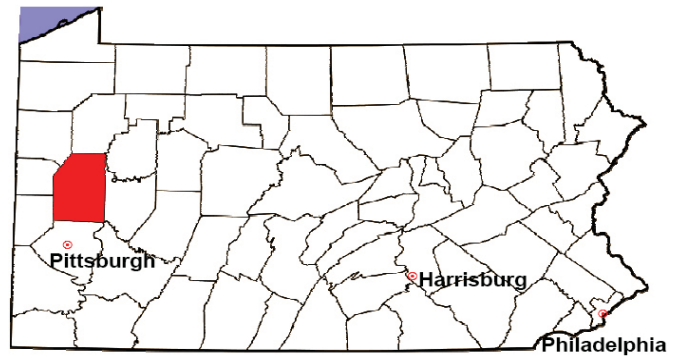
(R) - Revised

Accounts New Cases Filed, 1998-2008



BUTLER COUNTY

2008 Population Estimate: 182,902
 Class of County: 4th
 No. of Common Pleas Court Judgeships: 6



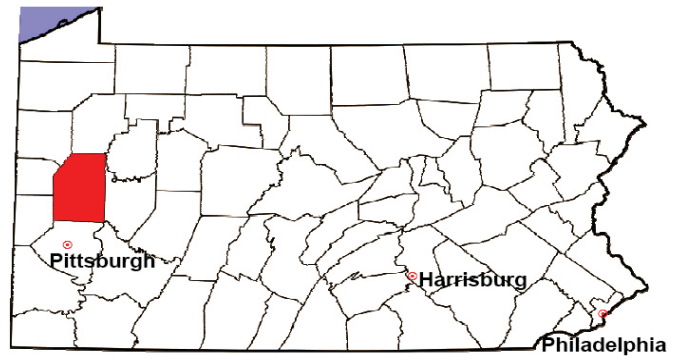
2008 Adoptions		No. of Cases	%
Cases Pending 1/1/08		28 ^(R)	
New Cases Filed in '08		54	
Cases Available for Processing		82	
Processed By:			
Contested before a Judge	Granted	0	0.0%
	Denied	0	0.0%
Uncontested	Granted	41	78.8%
	Denied	0	0.0%
Other		11	21.2%
Cases Processed		52	100.0%
Cases Pending 12/31/08		30	

(R) - Revised

Note: Prior to 2008, each petition was counted as one new case, regardless of the number of children listed on the petition. Starting in 2008, each child listed on a petition is counted as a separate case. Therefore, statistics for 2008 should not be compared with those for previous years.

BUTLER COUNTY

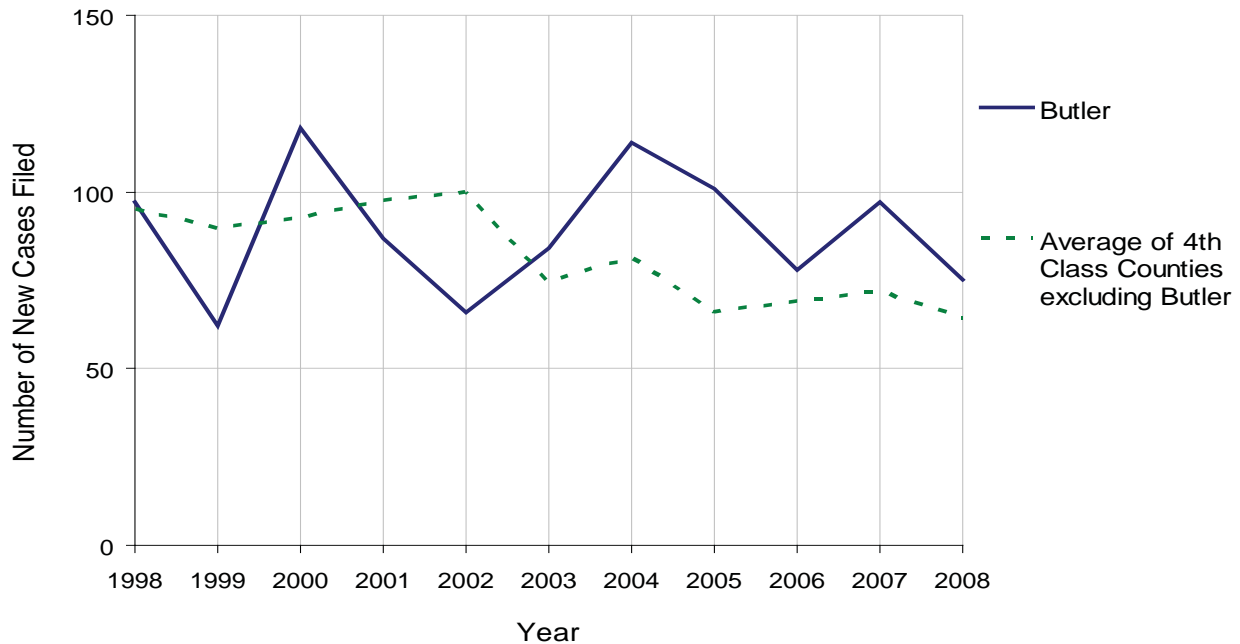
2008 Population Estimate: 182,902
 Class of County: 4th
 No. of Common Pleas Court Judgeships: 6



2008 Relinquishments/Terminations	No. of Petitions	%
Cases Pending 1/1/08	84 ^(R)	
New Cases Filed in '08	82	
Cases Available for Processing	166	
Processed By:		
Contested before a Judge	2	1.7%
Uncontested	113	96.6%
Other	2	1.7%
Cases Processed	117	100.0%
Cases Pending 12/31/08	49	

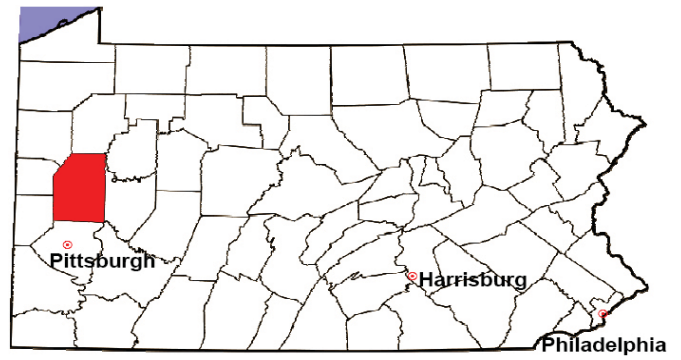
(R) - Revised

Relinquishments/Terminations New Cases Filed, 1998-2008



BUTLER COUNTY

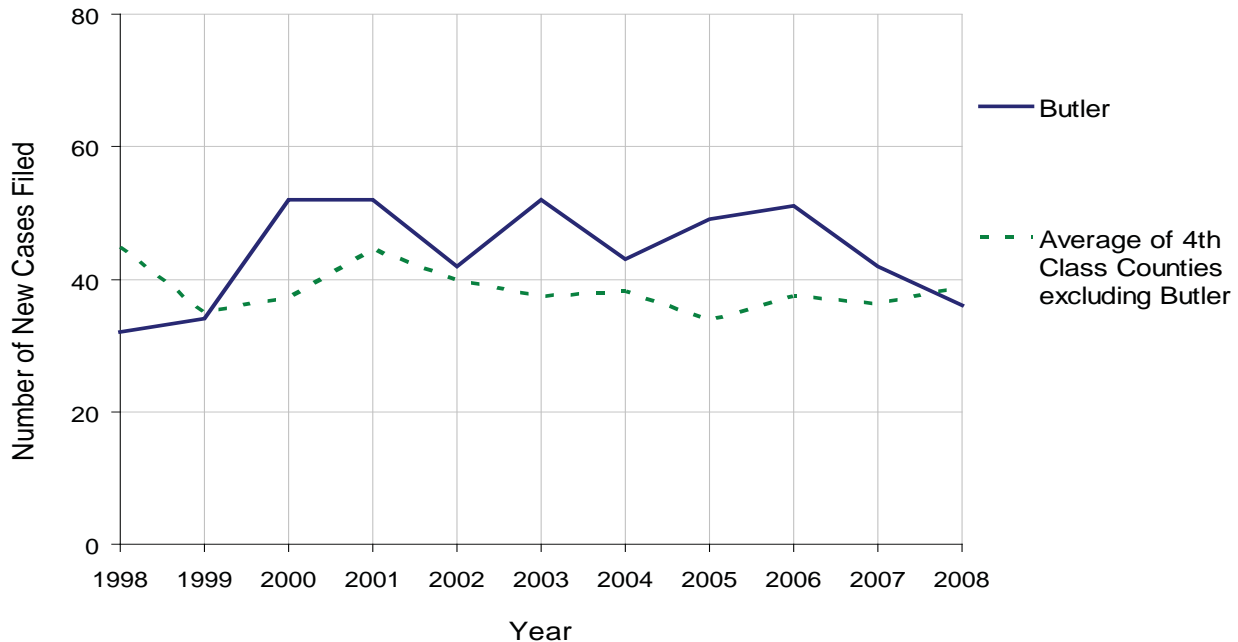
2008 Population Estimate: 182,902
 Class of County: 4th
 No. of Common Pleas Court Judgeships: 6



2008 Appointment of Guardians	No. of Petitions	%
Cases Pending 1/1/08	9 ^(R)	
New Cases Filed in '08	36	
Cases Available for Processing	45	
Processed By:		
Contested before a Judge	0	0.0%
Uncontested	31	86.1%
Other	5	13.9%
Cases Processed	36	100.0%
Cases Pending 12/31/08	9	

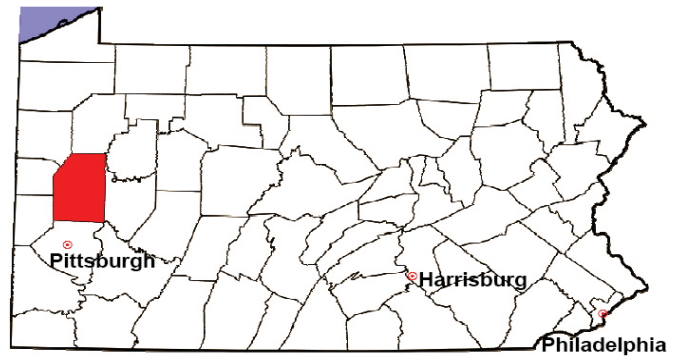
(R) - Revised

Appointment of Guardians New Cases Filed, 1998-2008



BUTLER COUNTY

2008 Population Estimate: 182,902
 Class of County: 4th
 No. of Common Pleas Court Judgeships: 6



2008 Jury Activity & Performance Measures		
A. Juror Days	1,059	
B. Number Sent to Voir Dire	741	
Voir Dire Attendance Rate $(B/A * 100)$		70.0%
C. Number of Voir Dires Started	17	
Juror Days Per Voir Dire Starts (A/C)		62
D. Number of Jurors Selected	224	
Juror Selection Rate $(D/B * 100)$		30.2%
E. Number of Jury Trials Started	13	
Juror Days Per Trial Starts (A/E)		81
Number of Voir Dires Not Resulting in Trial $(C-E)$		4
Percent Voir Dires Not Resulting in Trial $(C-E)/C * 100$		23.5%
F. Pool Days	12	
G. Zero Panel Days	2	
Percent Zero Panel Days $(G/F * 100)$		16.7%
H. Total Juror Fees Incurred	\$16,077	
Average Juror Fees Per Trial (H/E)		\$1,237

Average Juror Fees Per Trial, 1998-2008

