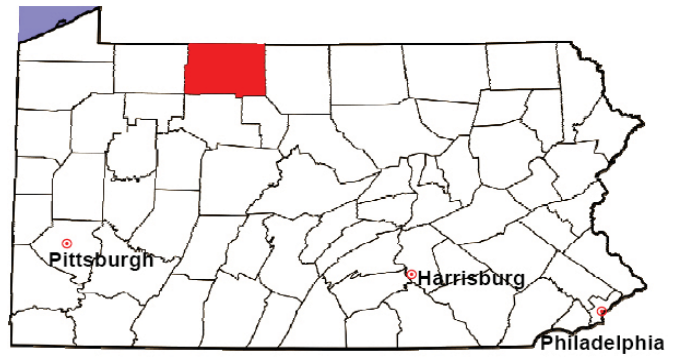


MCKEAN COUNTY

2008 Population Estimate: 43,537

Class of County: 6th

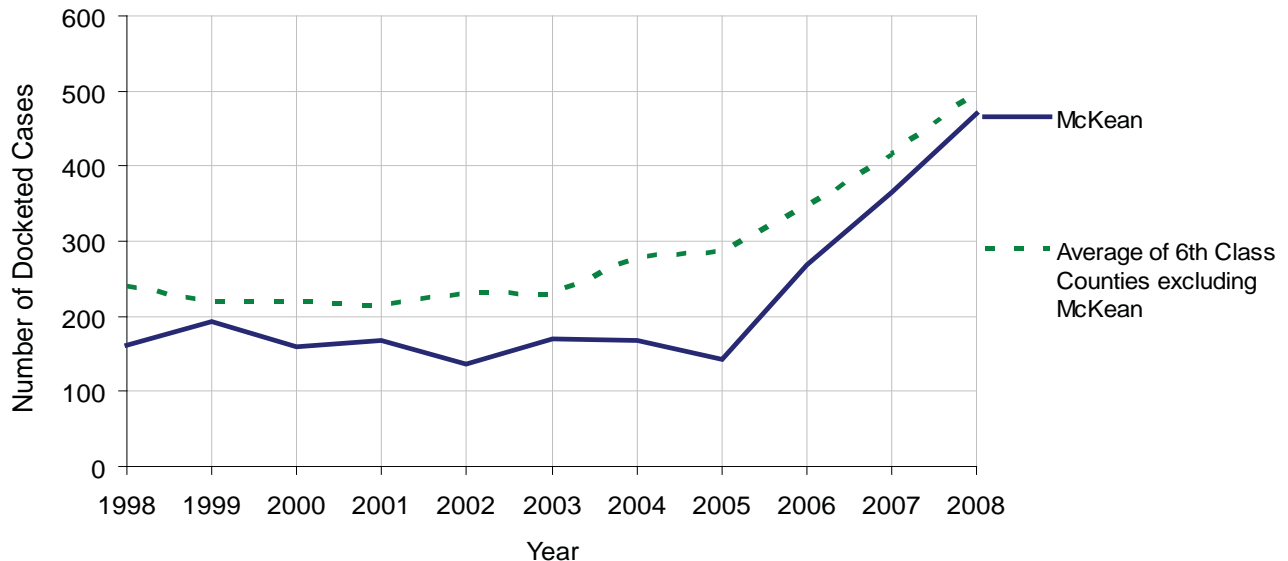
No. of Common Pleas Court Judgeships: 2



2008 Civil		Civil Action		
Docketed Cases		470		
Arbitrated Cases		8		
Trial-Ready Cases:		Civil Action	Other	Total
Cases Pending 1/1/08		18	0	18
Became Trial Ready in '08		17	0	17
Restored to Trial List		0	0	0
Appeals from Arbitration		0	0	0
Cases Available for Trial		35	0	35
Disposed By:				
Settlement		9	0	9
Non-Jury Trial		1	0	1
Jury Trial		1	0	1
Stricken from Trial List		3	0	3
Other		2	0	2
Cases Disposed		16	0	16
Cases Pending 12/31/08		19	0	19

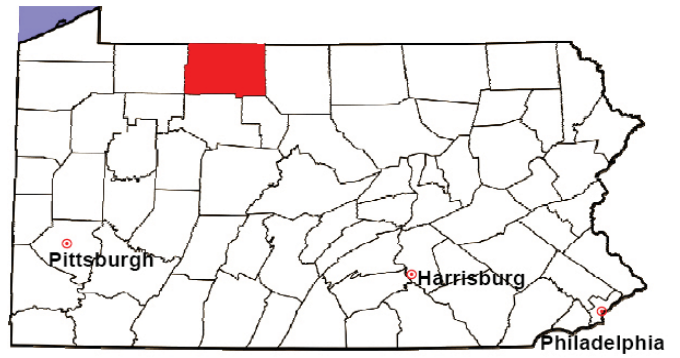
Age of Trial-Ready Cases as of 12/31/08 (Civil Action Only)		
0-6 months	13	68%
7-12 months	5	26%
13-18 months	0	0%
19-24 months	1	5%
25-30 months	0	0%
31-36 months	0	0%
Over 36 months	0	0%
Total	19	100%

Docketed Cases, 1998-2008



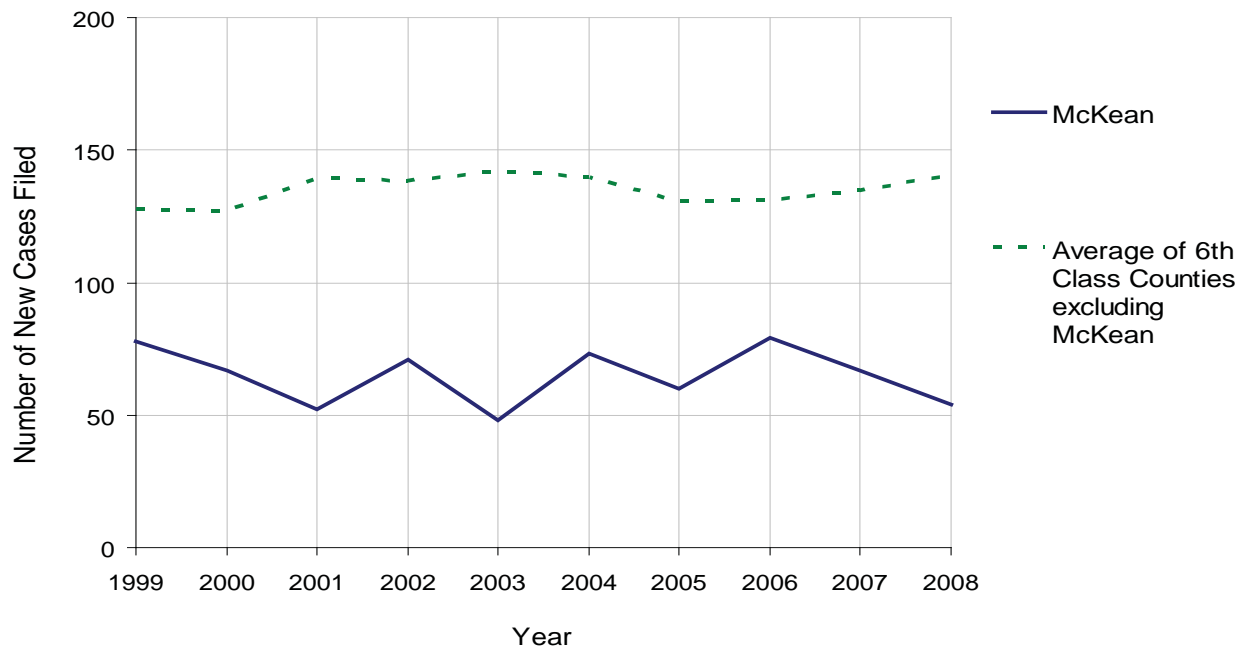
MCKEAN COUNTY

2008 Population Estimate: 43,537
 Class of County: 6th
 No. of Common Pleas Court Judgeships: 2



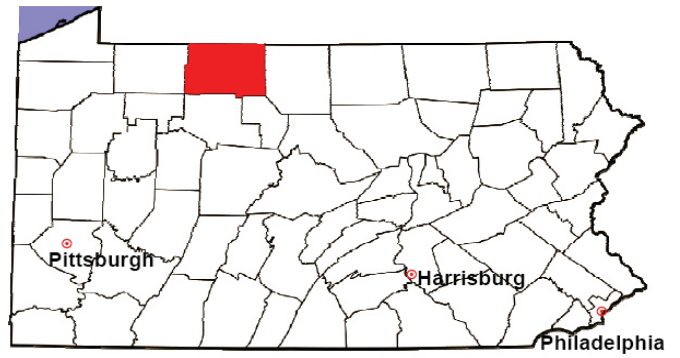
2008 Protection From Abuse	No. of Petitions	%
Cases Pending 1/1/08	14	
New Cases Filed in '08	54	
Cases Available for Processing	68	
Processed By:		
Final Order After Hearing	12	21.4%
Final Order by Stipulation or Agreement	24	42.9%
Dismissal	17	30.4%
Withdrawal	0	0.0%
Other	3	5.4%
Cases Processed	56	100.0%
Cases Pending 12/31/08	12	

PFA New Cases Filed, 1999-2008



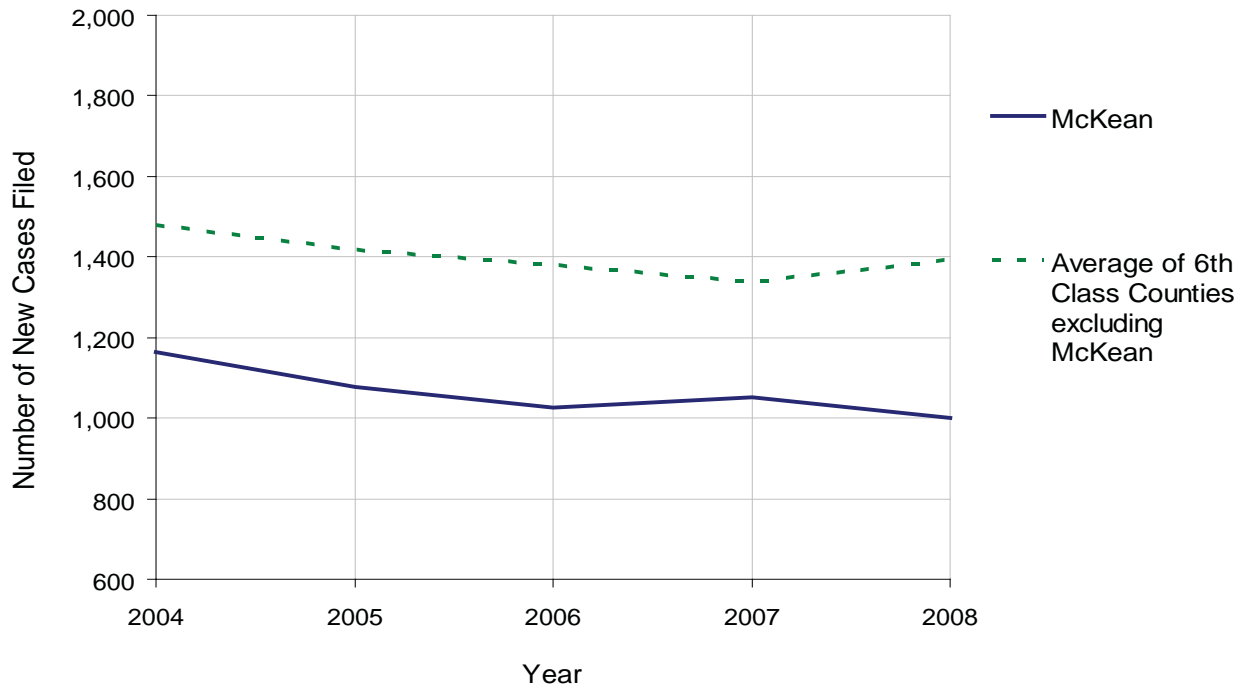
MCKEAN COUNTY

2008 Population Estimate: 43,537
 Class of County: 6th
 No. of Common Pleas Court Judgeships: 2



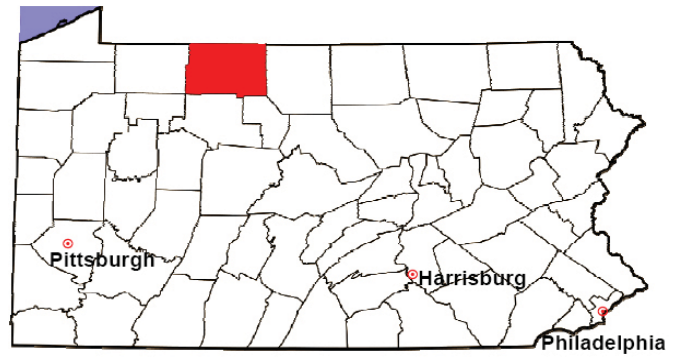
2008 Spousal & Child Support	No. of Petitions	%
Cases Pending 1/1/08	142	
New Cases Filed in '08	999	
Dockets Transferred In (+)	1	
Dockets Transferred Out (-)	10	
Cases Available for Processing	1,132	
Processed By:		
Judge	34	3.5%
Intake Officer	309	31.5%
Hearing Officer	637	65.0%
Other	0	0.0%
Cases Processed	980	100.0%
Cases Pending 12/31/08	152	

Spousal & Child Support New Cases Filed, 1998-2008



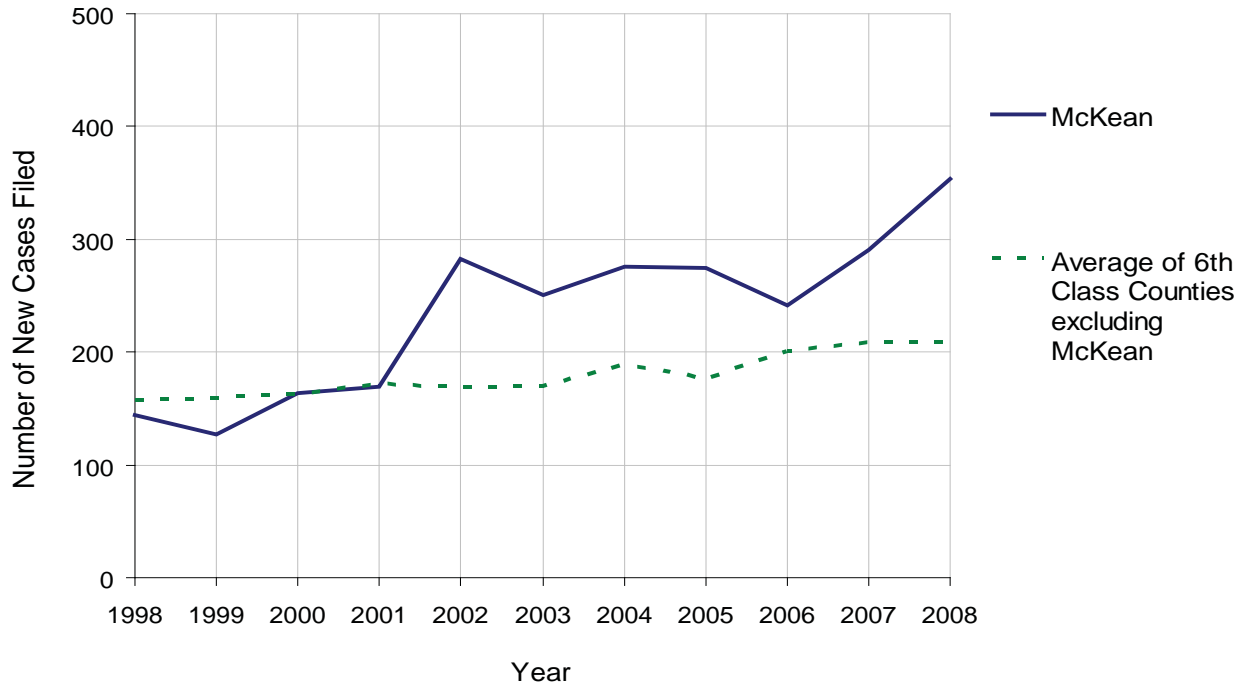
MCKEAN COUNTY

2008 Population Estimate: 43,537
 Class of County: 6th
 No. of Common Pleas Court Judgeships: 2



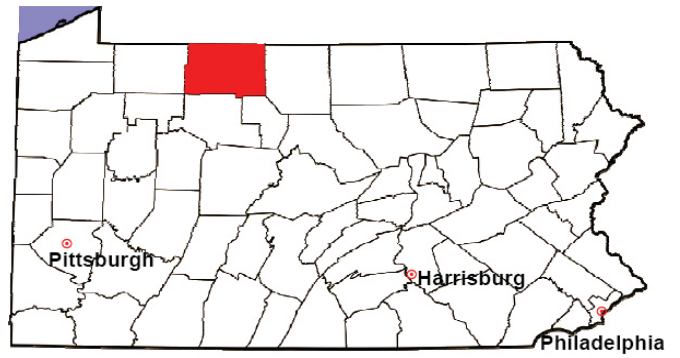
2008 Custody/Partial Custody/Visitation	No. of Petitions	%
Cases Pending 1/1/08	124	
New Cases Filed in '08	354	
Cases Available for Processing	478	
Processed By:		
Judge	91	25.1%
Non-Judicial Officer	222	61.3%
Other	49	13.5%
Cases Processed	362	100.0%
Cases Pending 12/31/08	116	

Custody/Partial Custody/Visitation New Cases Filed
 1998-2008



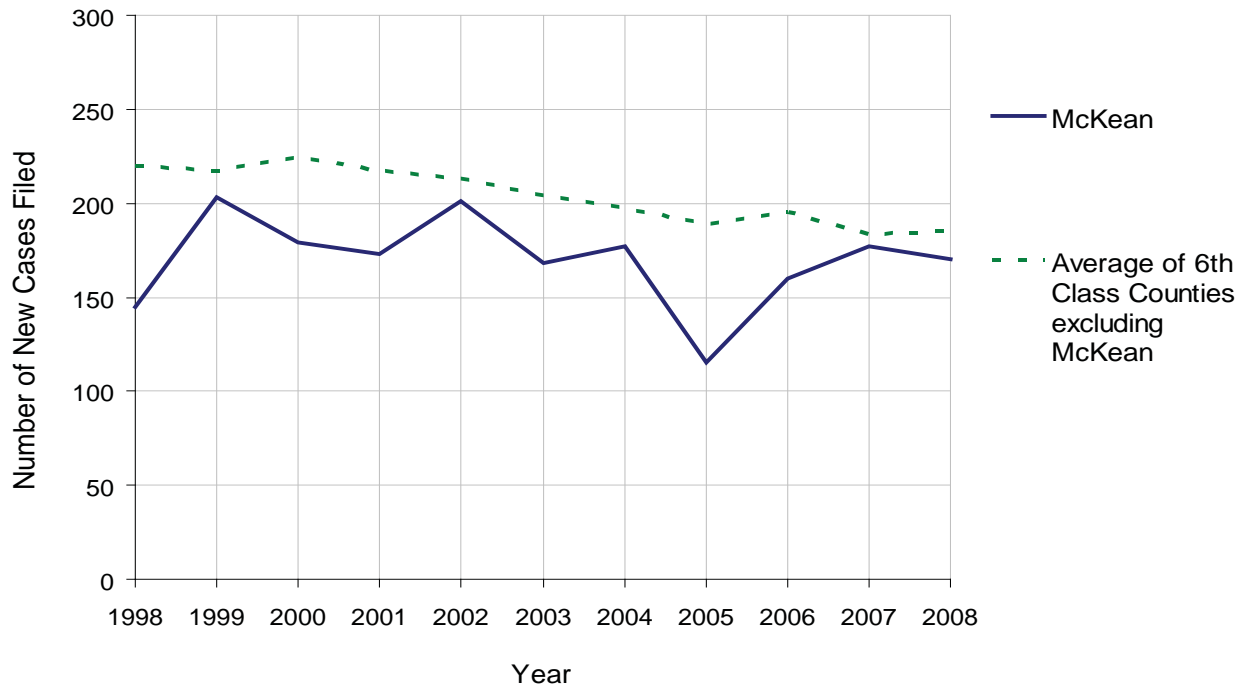
MCKEAN COUNTY

2008 Population Estimate: 43,537
 Class of County: 6th
 No. of Common Pleas Court Judgeships: 2



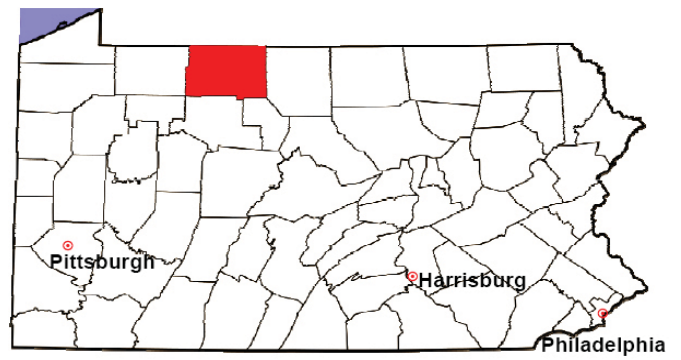
2008 Divorce	No. of Petitions	%
Cases Pending 1/1/08	150	
New Cases Filed in '08	170	
Cases Available for Processing	320	
Processed By:		
Contested Before a Judge	0	0.0%
Contested Before a Master	23	18.3%
Uncontested	83	65.9%
Other	20	15.9%
Cases Processed	126	100.0%
Cases Pending 12/31/08	194	

Divorce New Cases Filed, 1998-2008



MCKEAN COUNTY

2008 Population Estimate: 43,537
 Class of County: 6th
 No. of Common Pleas Court Judgeships: 2



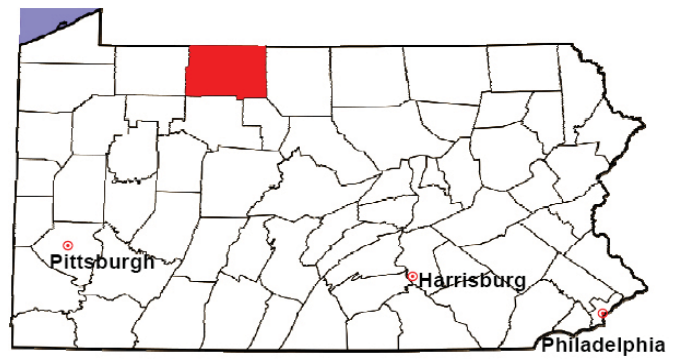
2008 Juvenile Dependency Abuse/Neglect	No. of Petitions	%
Cases Pending 1/1/08	1	
New Cases Filed in '08	10	
Cases Available for Processing	11	
Processed By:		
Judge	11	100.0%
Non-Judicial Officer	0	0.0%
Other	0	0.0%
Cases Processed	11	100.0%
Cases Pending 12/31/08	0	

Abuse/Neglect New Cases Filed, 2000-2008



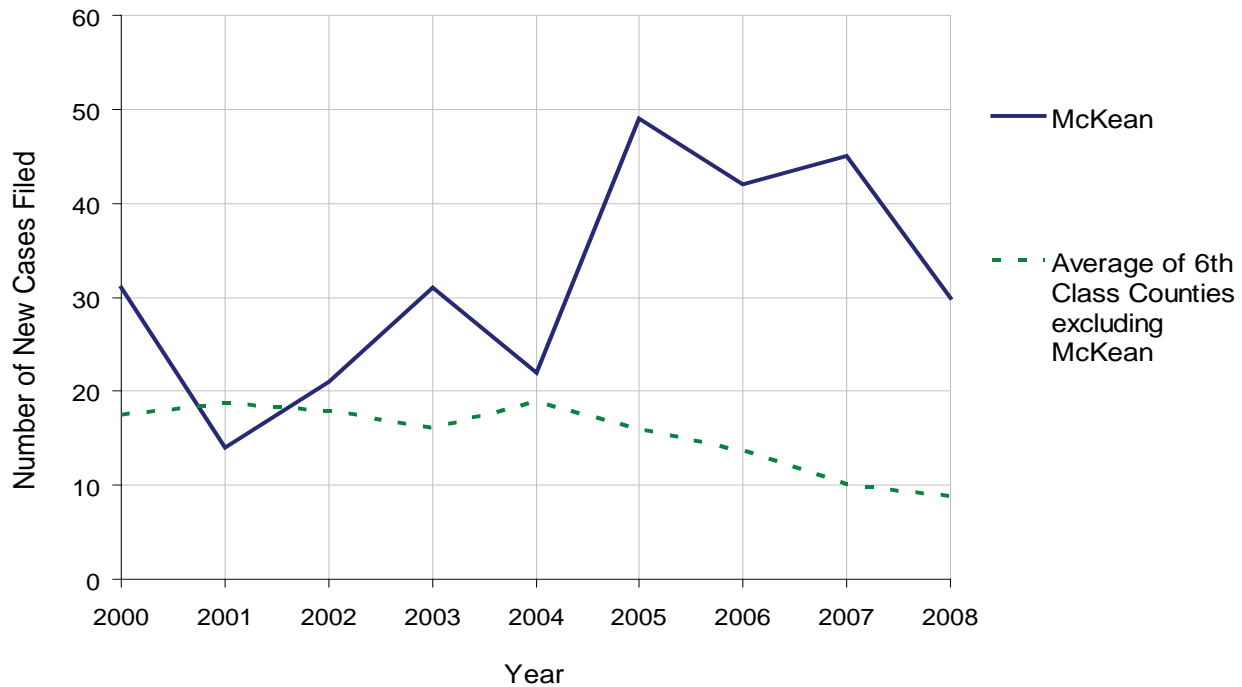
MCKEAN COUNTY

2008 Population Estimate: 43,537
 Class of County: 6th
 No. of Common Pleas Court Judgeships: 2



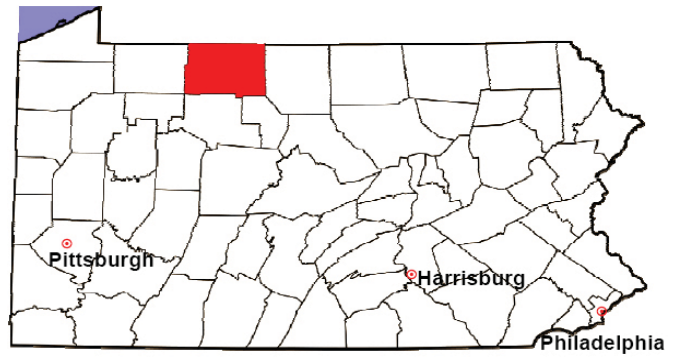
2008 Juvenile Dependency Status Offenses	No. of Petitions	%
Cases Pending 1/1/08	72	
New Cases Filed in '08	30	
Cases Available for Processing	102	
Processed By:		
Judge	27	100.0%
Non-Judicial Officer	0	0.0%
Other	0	0.0%
Cases Processed	27	100.0%
Cases Pending 12/31/08	75	

Status Offenses New Cases Filed, 2000-2008



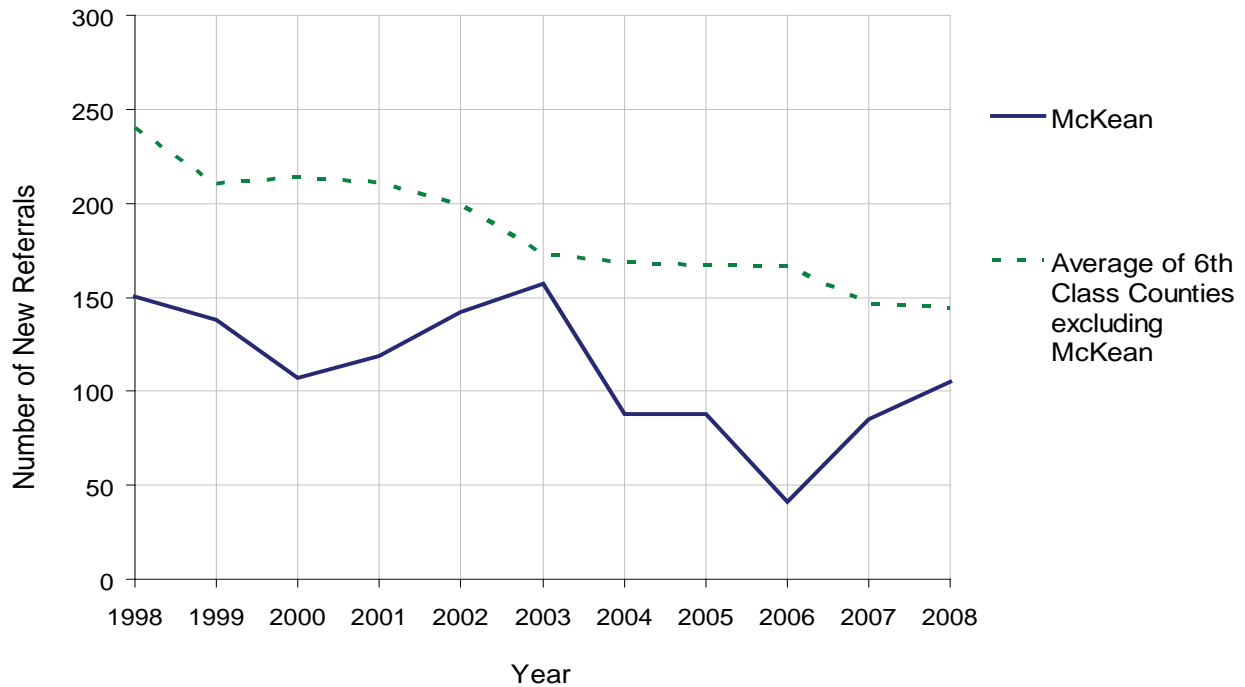
MCKEAN COUNTY

2008 Population Estimate: 43,537
 Class of County: 6th
 No. of Common Pleas Court Judgeships: 2



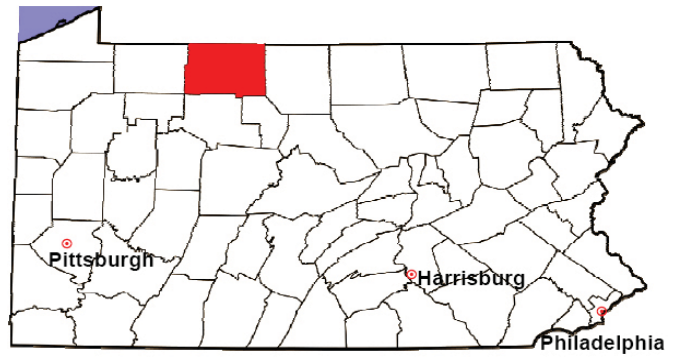
2008 Juvenile Delinquency	No. of Referrals	%
Cases Pending 1/1/08	187	
New Referrals in '08	105	
Cases Available for Processing	292	
Processed By:		
Judge	78	80.4%
Non-Judicial Officer	0	0.0%
Other	19	19.6%
Cases Processed	97	100.0%
Cases Pending 12/31/08	195	

Juvenile Delinquency New Referrals, 1998-2008



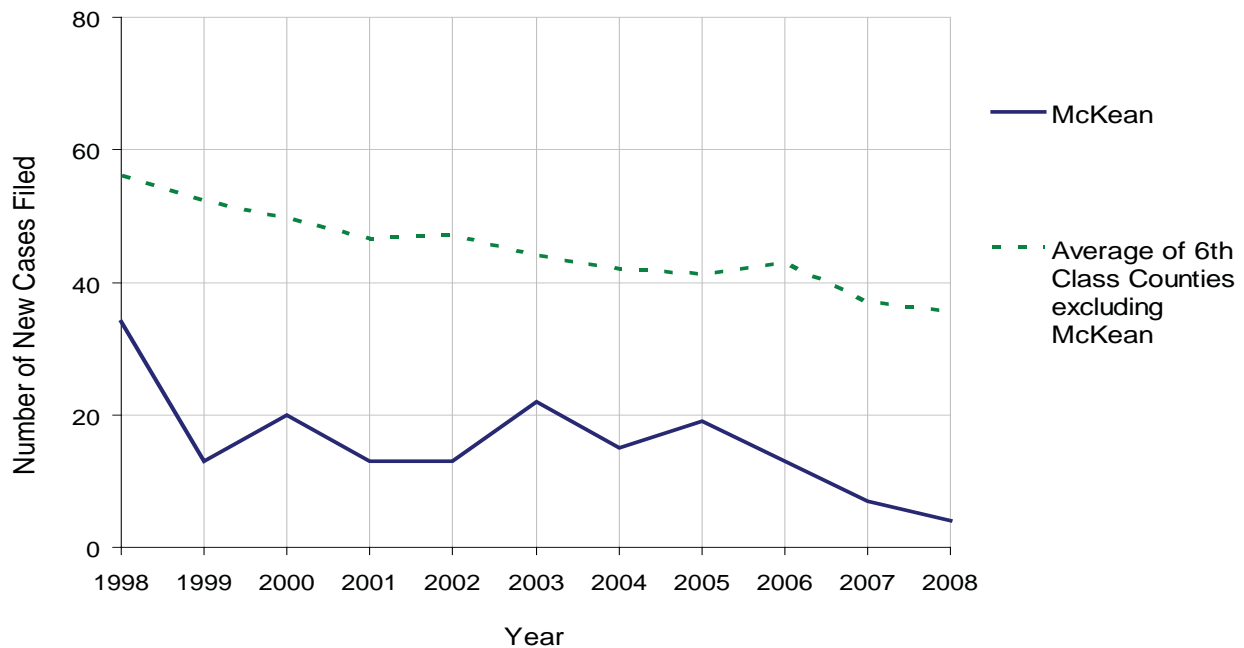
MCKEAN COUNTY

2008 Population Estimate: 43,537
 Class of County: 6th
 No. of Common Pleas Court Judgeships: 2



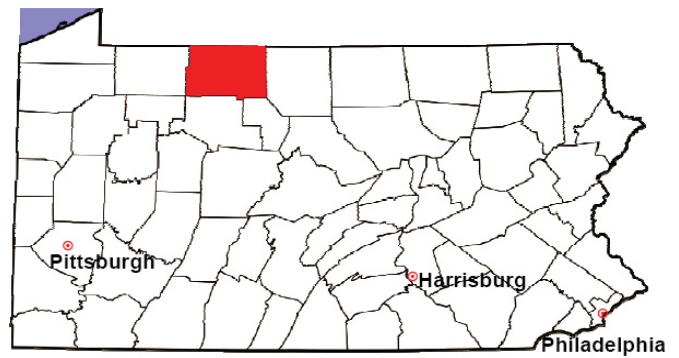
2008 Accounts	No. of Accounts	%
Cases Pending 1/1/08	13	
New Cases Filed in '08	4	
Cases Available for Processing	17	
Processed By:		
Contested before a Judge	0	0.0%
Contested before a Non-Judicial Officer	0	0.0%
Uncontested	4	100.0%
Other	0	0.0%
Cases Processed	4	100.0%
Cases Pending 12/31/08	13	

Accounts New Cases Filed, 1998-2008



MCKEAN COUNTY

2008 Population Estimate: 43,537
 Class of County: 6th
 No. of Common Pleas Court Judgeships: 2

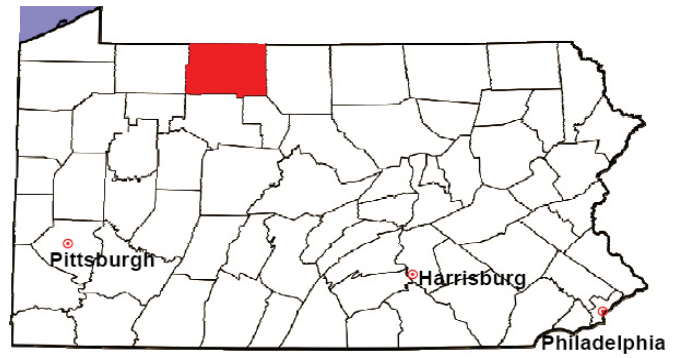


2008 Adoptions		No. of Cases	%
Cases Pending 1/1/08		16	
New Cases Filed in '08		21	
Cases Available for Processing		37	
Processed By:			
Contested before a Judge	Granted	0	0.0%
	Denied	0	0.0%
Uncontested	Granted	15	100.0%
	Denied	0	0.0%
Other		0	0.0%
Cases Processed		15	100.0%
Cases Pending 12/31/08		22	

Note: Prior to 2008, each petition was counted as one new case, regardless of the number of children listed on the petition. Starting in 2008, each child listed on a petition is counted as a separate case. Therefore, statistics for 2008 should not be compared with those for previous years.

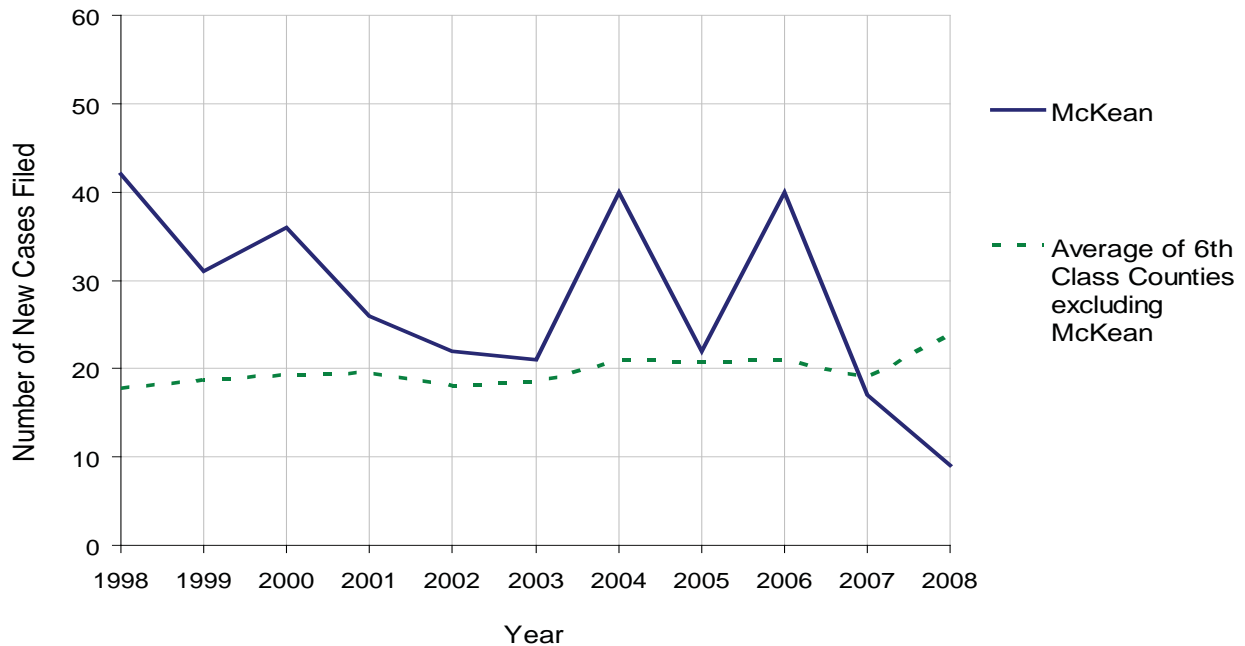
MCKEAN COUNTY

2008 Population Estimate: 43,537
 Class of County: 6th
 No. of Common Pleas Court Judgeships: 2



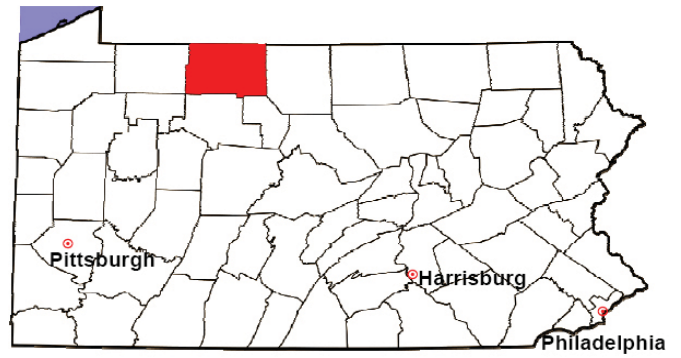
2008 Relinquishments/Terminations	No. of Petitions	%
Cases Pending 1/1/08	66	
New Cases Filed in '08	9	
Cases Available for Processing	75	
Processed By:		
Contested before a Judge	0	0.0%
Uncontested	28	100.0%
Other	0	0.0%
Cases Processed	28	100.0%
Cases Pending 12/31/08	47	

Relinquishments/Terminations New Cases Filed, 1998-2008



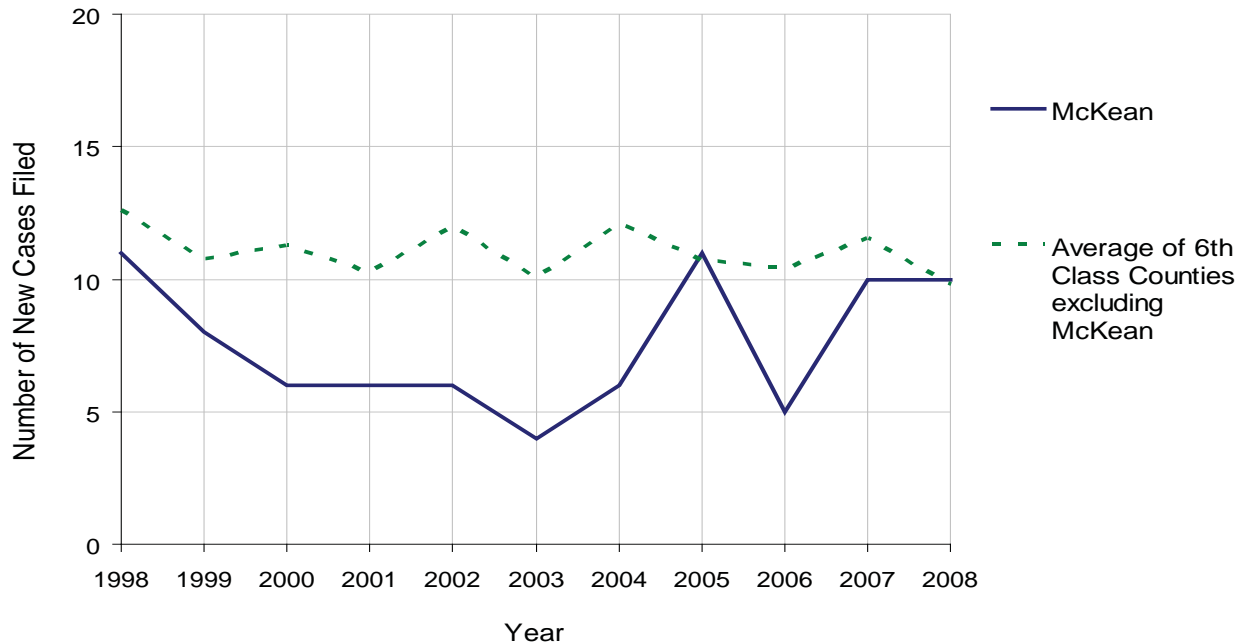
MCKEAN COUNTY

2008 Population Estimate: 43,537
 Class of County: 6th
 No. of Common Pleas Court Judgeships: 2



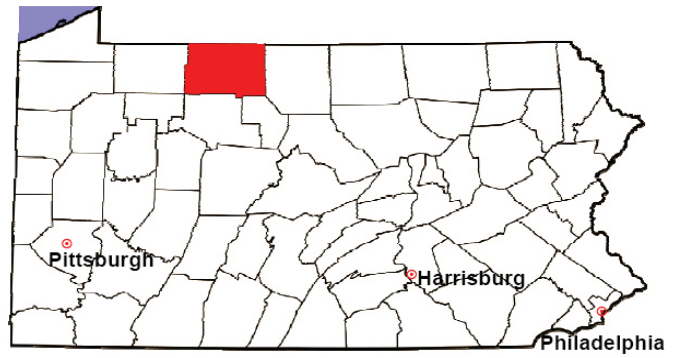
2008 Appointment of Guardians	No. of Petitions	%
Cases Pending 1/1/08	14	
New Cases Filed in '08	10	
Cases Available for Processing	24	
Processed By:		
Contested before a Judge	0	0.0%
Uncontested	7	77.8%
Other	2	22.2%
Cases Processed	9	100.0%
Cases Pending 12/31/08	15	

Appointment of Guardians New Cases Filed, 1998-2008



MCKEAN COUNTY

2008 Population Estimate: 43,537
 Class of County: 6th
 No. of Common Pleas Court Judgeships: 2



2008 Jury Activity & Performance Measures		
A. Juror Days	1,220	
B. Number Sent to Voir Dire	1,016	
Voir Dire Attendance Rate $(B/A * 100)$		83.3%
C. Number of Voir Dires Started	21	
Juror Days Per Voir Dire Starts (A/C)		58
D. Number of Jurors Selected	294	
Juror Selection Rate $(D/B * 100)$		28.9%
E. Number of Jury Trials Started	21	
Juror Days Per Trial Starts (A/E)		58
Number of Voir Dires Not Resulting in Trial $(C-E)$		0
Percent Voir Dires Not Resulting in Trial $(C-E)/C * 100$		0.0%
F. Pool Days	27	
G. Zero Panel Days	6	
Percent Zero Panel Days $(G/F * 100)$		22.2%
H. Total Juror Fees Incurred	\$41,537	
Average Juror Fees Per Trial (H/E)		\$1,978

Average Juror Fees Per Trial, 1998-2008

