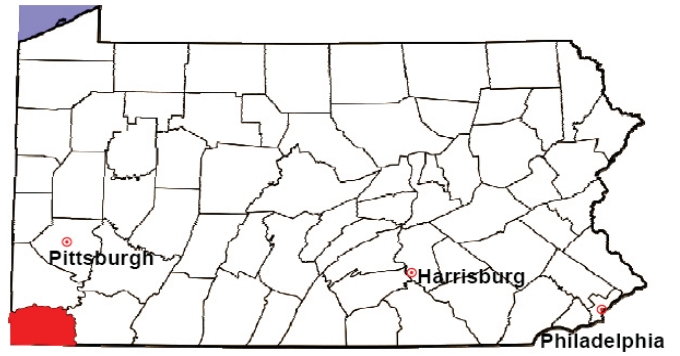


# GREENE COUNTY

2008 Population Estimate: 39,344

Class of County: 6th

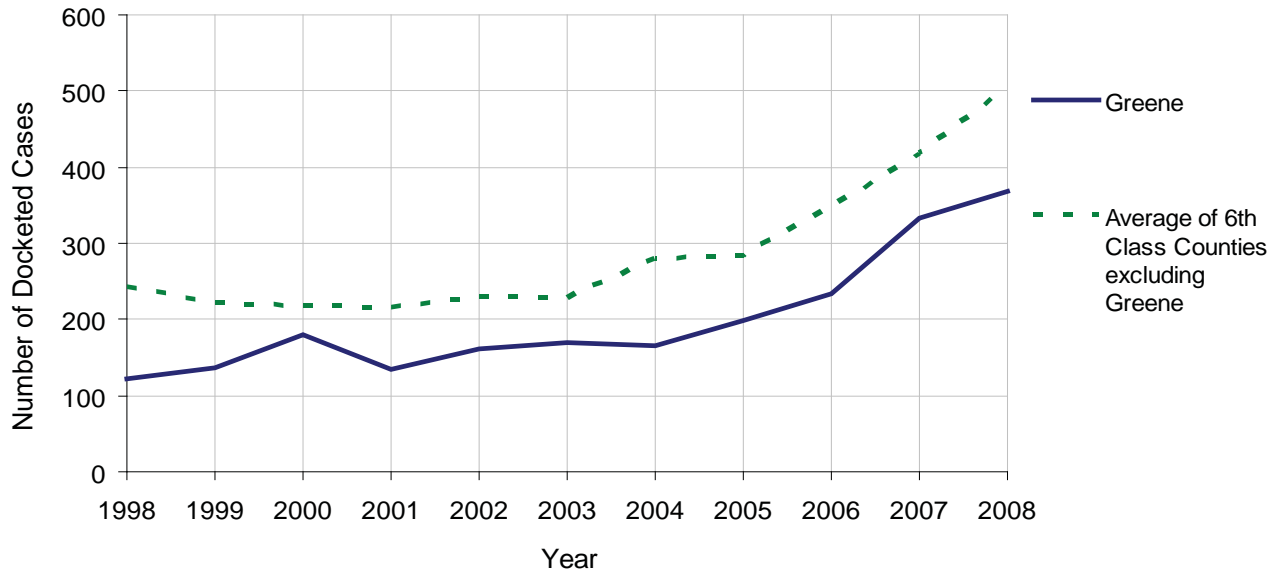
No. of Common Pleas Court Judgeships: 2



2008 Civil		Civil Action		
Docketed Cases		368		
Arbitrated Cases		12		
<b>Trial-Ready Cases:</b>		<b>Civil Action</b>	<b>Other</b>	<b>Total</b>
Cases Pending 1/1/08		13	0	13
Became Trial Ready in '08		10	0	10
Restored to Trial List		0	0	0
Appeals from Arbitration		2	0	2
<b>Cases Available for Trial</b>		<b>25</b>	<b>0</b>	<b>25</b>
<b>Disposed By:</b>				
Settlement		10	0	10
Non-Jury Trial		2	0	2
Jury Trial		3	0	3
Stricken from Trial List		1	0	1
Other		5	0	5
<b>Cases Disposed</b>		<b>21</b>	<b>0</b>	<b>21</b>
<b>Cases Pending 12/31/08</b>		<b>4</b>	<b>0</b>	<b>4</b>

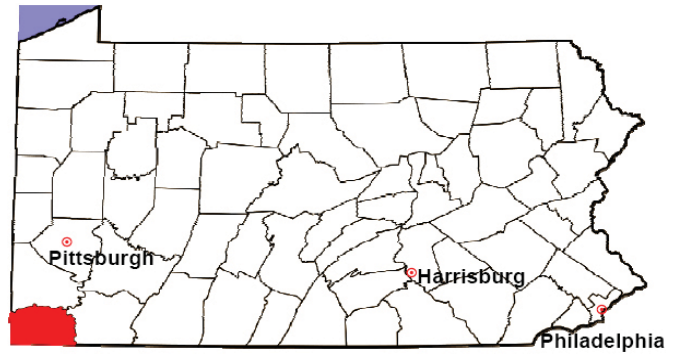
Age of Trial-Ready Cases as of 12/31/08 (Civil Action Only)		
0-6 months	4	100%
7-12 months	0	0%
13-18 months	0	0%
19-24 months	0	0%
25-30 months	0	0%
31-36 months	0	0%
Over 36 months	0	0%
<b>Total</b>	<b>4</b>	<b>100%</b>

Docketed Cases, 1998-2008



# GREENE COUNTY

2008 Population Estimate: 39,344  
 Class of County: 6th  
 No. of Common Pleas Court Judgeships: 2



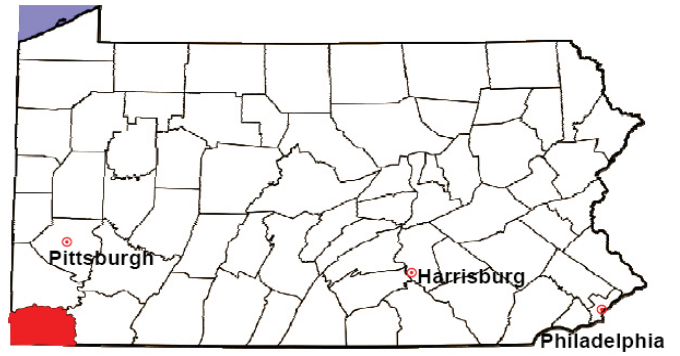
2008 Protection From Abuse	No. of Petitions	%
Cases Pending 1/1/08	55	
New Cases Filed in '08	129	
<b>Cases Available for Processing</b>	<b>184</b>	
Processed By:		
Final Order After Hearing	16	11.9%
Final Order by Stipulation or Agreement	45	33.6%
Dismissal	55	41.0%
Withdrawal	1	0.7%
Other	17	12.7%
<b>Cases Processed</b>	<b>134</b>	<b>100.0%</b>
<b>Cases Pending 12/31/08</b>	<b>50</b>	

PFA New Cases Filed, 1999-2008



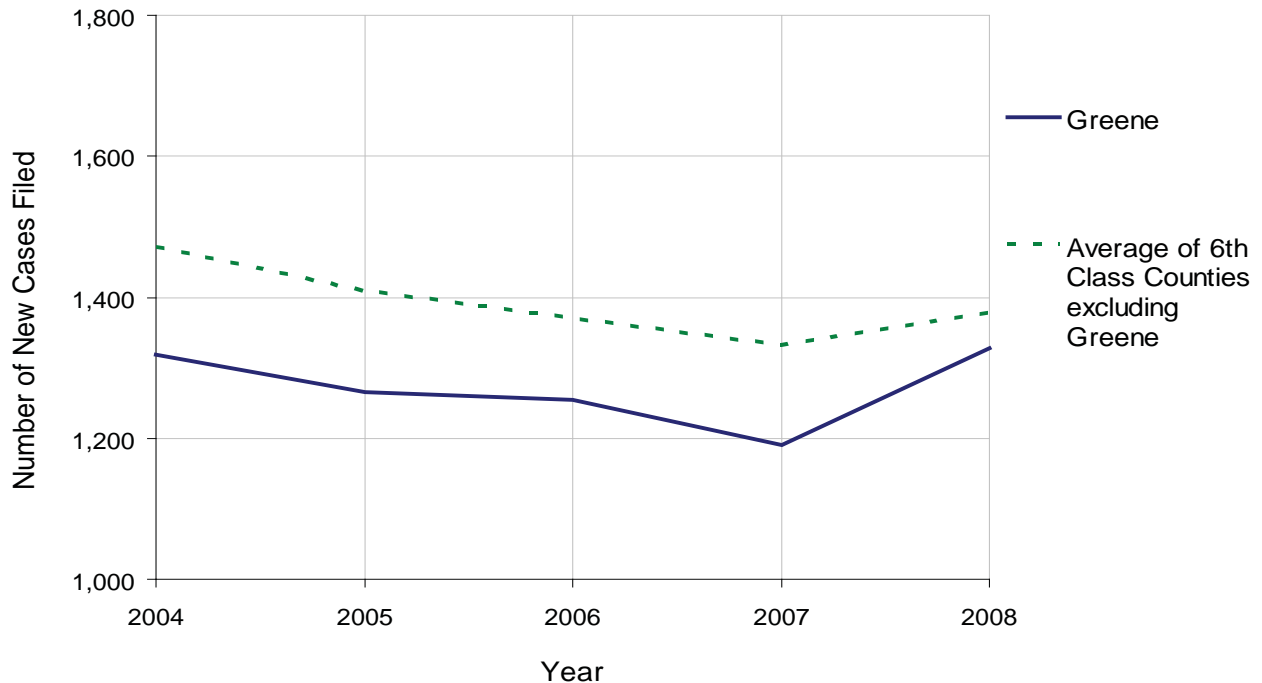
# GREENE COUNTY

2008 Population Estimate: 39,344  
 Class of County: 6th  
 No. of Common Pleas Court Judgeships: 2



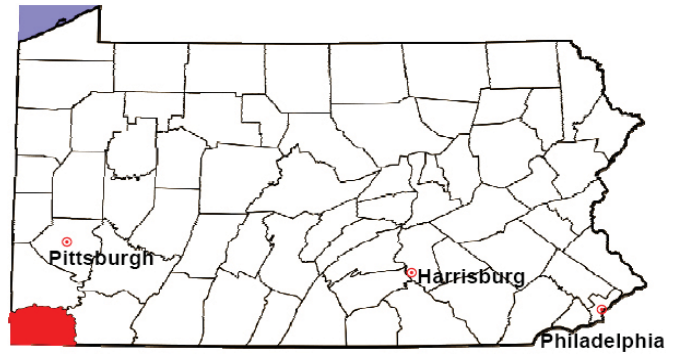
<b>2008 Spousal &amp; Child Support</b>	No. of Petitions	%
Cases Pending 1/1/08	142	
New Cases Filed in '08	1,328	
Dockets Transferred In (+)	10	
Dockets Transferred Out (-)	15	
<b>Cases Available for Processing</b>	<b>1,465</b>	
Processed By:		
Judge	79	6.1%
Intake Officer	1,222	93.9%
Hearing Officer	0	0.0%
Other	0	0.0%
<b>Cases Processed</b>	<b>1,301</b>	<b>100.0%</b>
<b>Cases Pending 12/31/08</b>	<b>164</b>	

Spousal & Child Support New Cases Filed, 1998-2008



# GREENE COUNTY

2008 Population Estimate: 39,344  
 Class of County: 6th  
 No. of Common Pleas Court Judgeships: 2



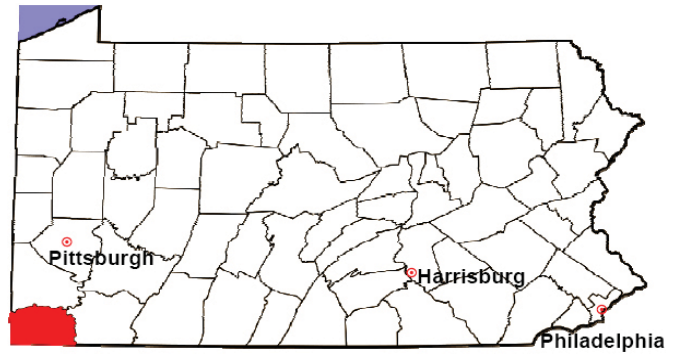
<b>2008 Custody/Partial Custody/Visitation</b>	No. of Petitions	%
Cases Pending 1/1/08	52	
New Cases Filed in '08	232	
<b>Cases Available for Processing</b>	<b>284</b>	
Processed By:		
Judge	23	8.8%
<b>Non-Judicial Officer</b>	<b>235</b>	<b>90.0%</b>
Other	3	1.1%
<b>Cases Processed</b>	<b>261</b>	<b>100.0%</b>
<b>Cases Pending 12/31/08</b>	<b>23</b>	

Custody/Partial Custody/Visitation New Cases Filed  
 1998-2008



# GREENE COUNTY

2008 Population Estimate: 39,344  
 Class of County: 6th  
 No. of Common Pleas Court Judgeships: 2



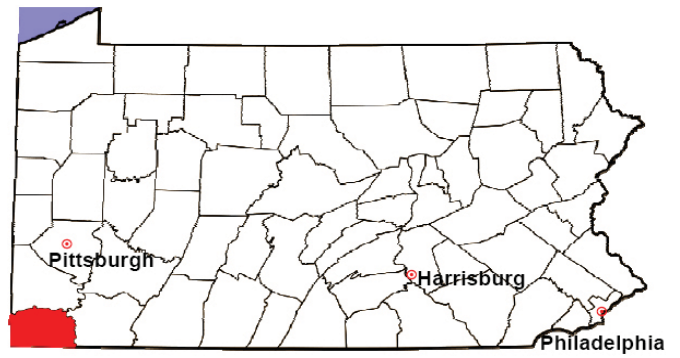
<b>2008 Divorce</b>	No. of Petitions	%
Cases Pending 1/1/08	187	
New Cases Filed in '08	120	
<b>Cases Available for Processing</b>	<b>307</b>	
Processed By:		
Contested Before a Judge	0	0.0%
Contested Before a Master	5	3.8%
Uncontested	118	89.4%
Other	9	6.8%
<b>Cases Processed</b>	<b>132</b>	<b>100.0%</b>
<b>Cases Pending 12/31/08</b>	<b>175</b>	

Divorce New Cases Filed, 1998-2008



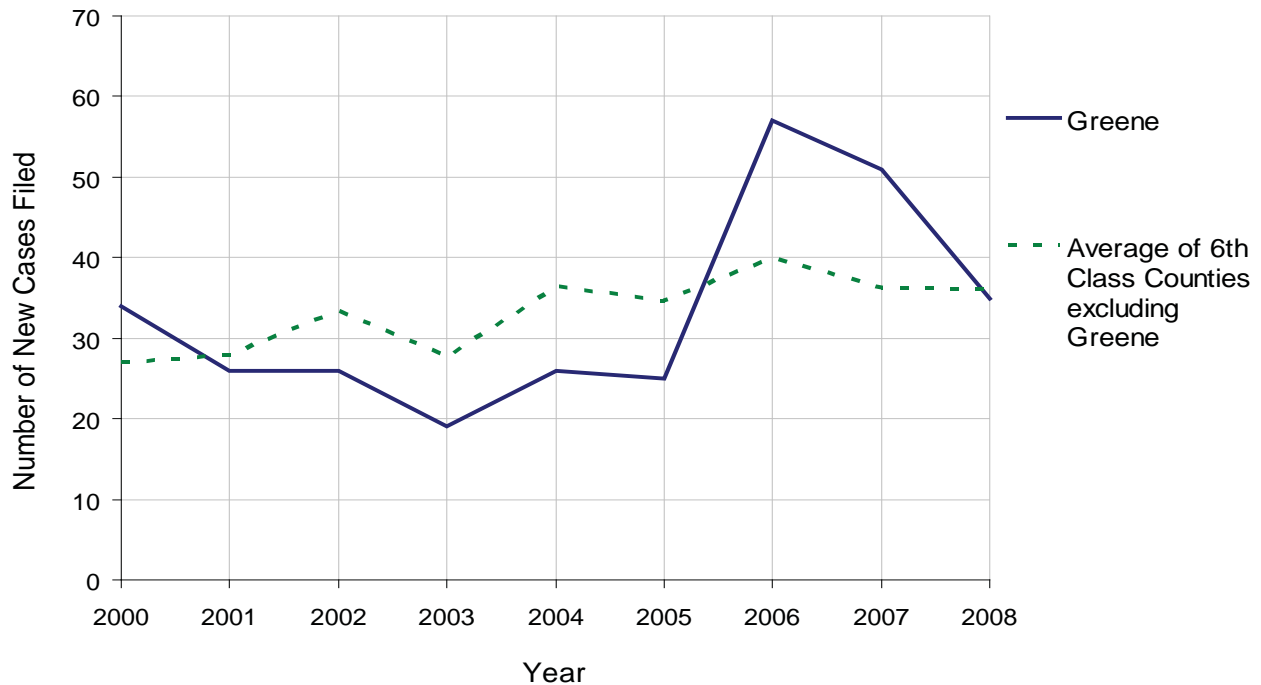
# GREENE COUNTY

2008 Population Estimate: 39,344  
 Class of County: 6th  
 No. of Common Pleas Court Judgeships: 2



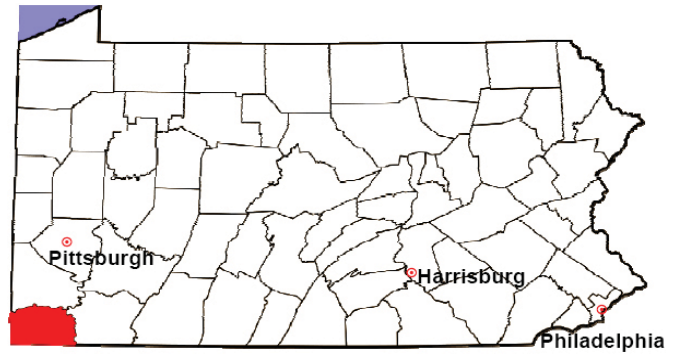
<b>2008 Juvenile Dependency Abuse/Neglect</b>	<b>No. of Petitions</b>	<b>%</b>
Cases Pending 1/1/08	3	
New Cases Filed in '08	35	
<b>Cases Available for Processing</b>	<b>38</b>	
Processed By:		
Judge	38	100.0%
Non-Judicial Officer	0	0.0%
Other	0	0.0%
<b>Cases Processed</b>	<b>38</b>	<b>100.0%</b>
<b>Cases Pending 12/31/08</b>	<b>0</b>	

Abuse/Neglect New Cases Filed, 2000-2008



# GREENE COUNTY

2008 Population Estimate: 39,344  
 Class of County: 6th  
 No. of Common Pleas Court Judgeships: 2



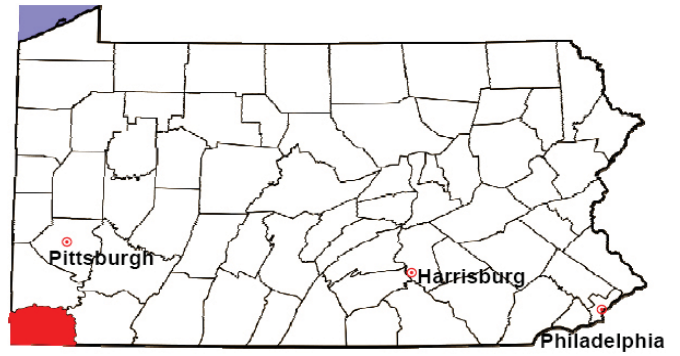
2008 Juvenile Dependency Status Offenses	No. of Petitions	%
Cases Pending 1/1/08	1	
New Cases Filed in '08	2	
<b>Cases Available for Processing</b>	<b>3</b>	
Processed By:		
Judge	3	100.0%
Non-Judicial Officer	0	0.0%
Other	0	0.0%
<b>Cases Processed</b>	<b>3</b>	<b>100.0%</b>
<b>Cases Pending 12/31/08</b>	<b>0</b>	

Status Offenses New Cases Filed, 2000-2008



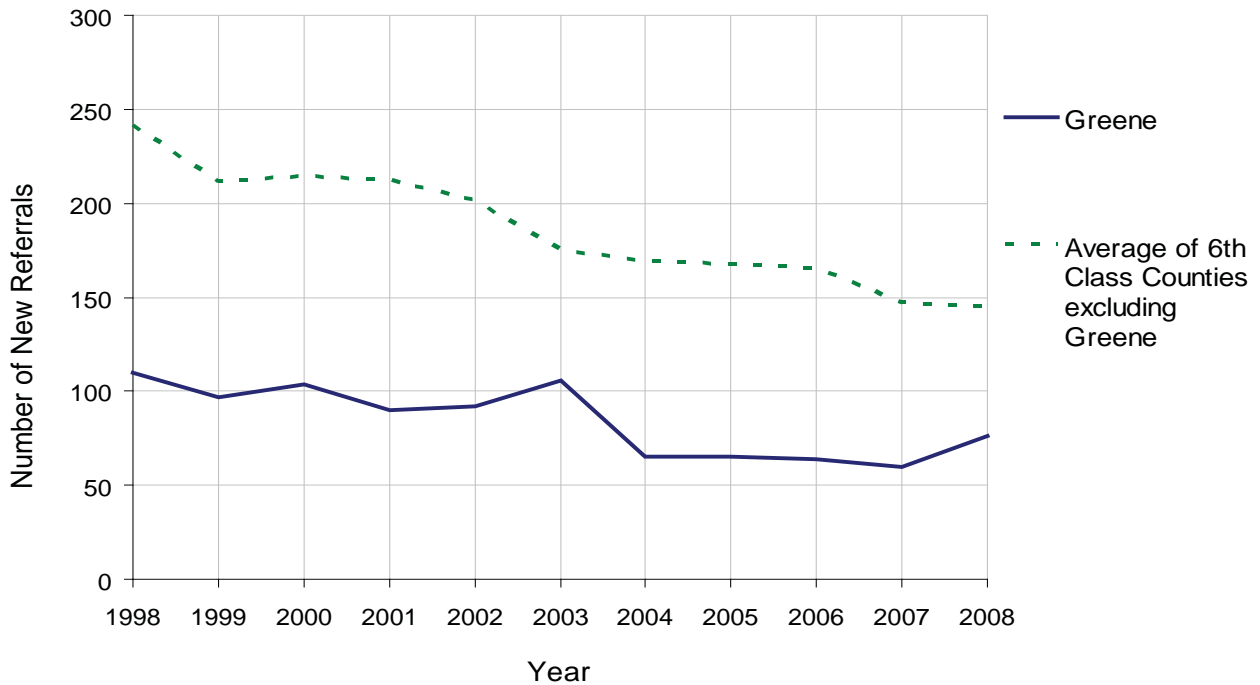
# GREENE COUNTY

2008 Population Estimate: 39,344  
 Class of County: 6th  
 No. of Common Pleas Court Judgeships: 2



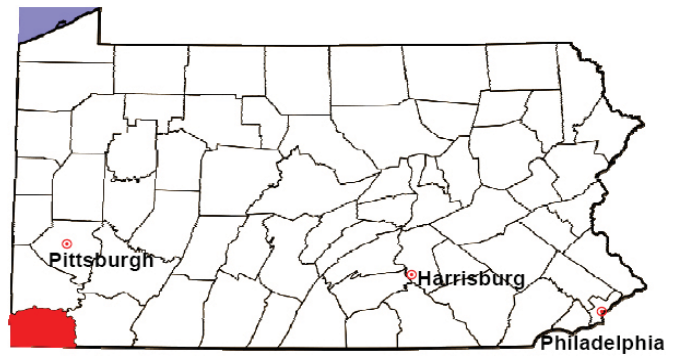
2008 Juvenile Delinquency	No. of Referrals	%
Cases Pending 1/1/08	21	
New Referrals in '08	76	
<b>Cases Available for Processing</b>	<b>97</b>	
Processed By:		
Judge	59	89.4%
Non-Judicial Officer	6	9.1%
Other	1	1.5%
<b>Cases Processed</b>	<b>66</b>	<b>100.0%</b>
<b>Cases Pending 12/31/08</b>	<b>31</b>	

Juvenile Delinquency New Referrals, 1998-2008



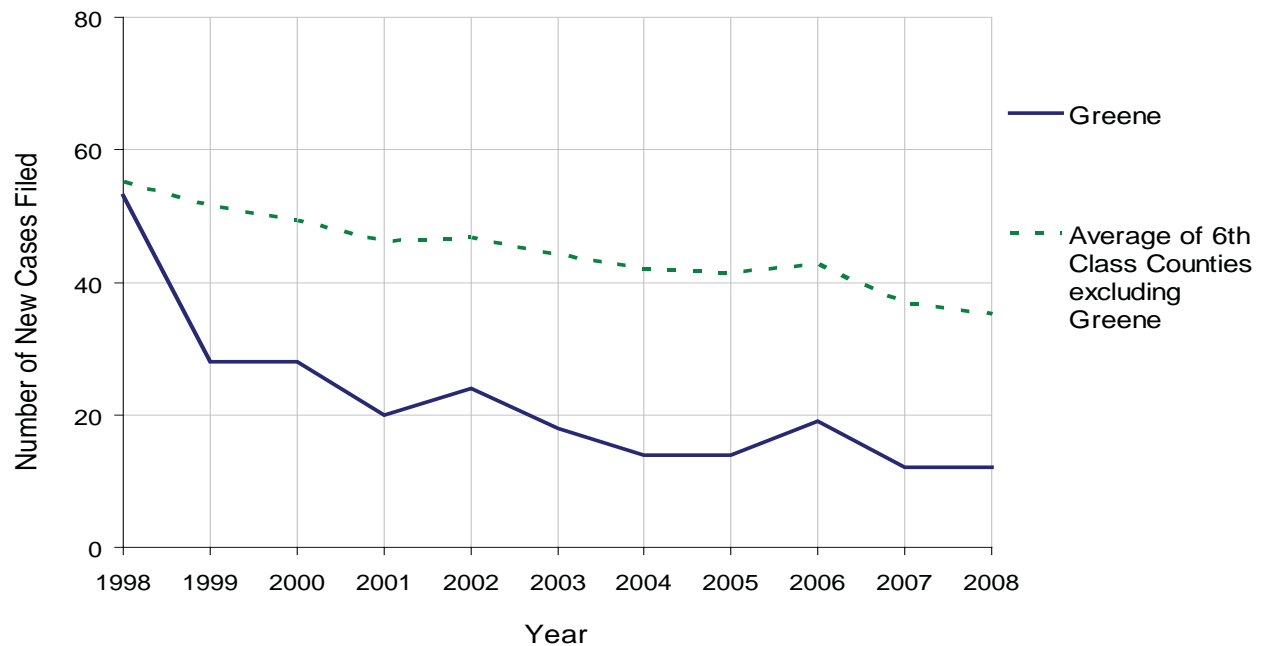
# GREENE COUNTY

2008 Population Estimate: 39,344  
 Class of County: 6th  
 No. of Common Pleas Court Judgeships: 2



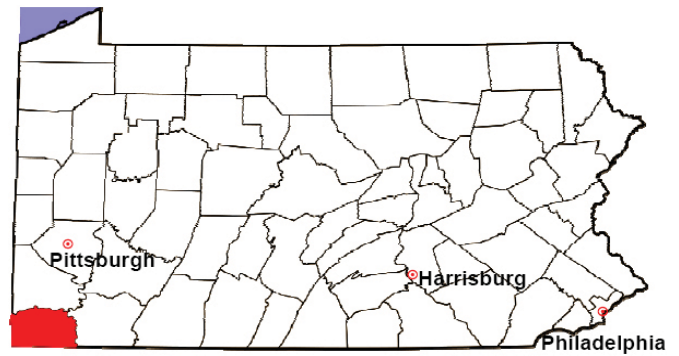
2008 Accounts	No. of Accounts	%
Cases Pending 1/1/08	6	
New Cases Filed in '08	12	
<b>Cases Available for Processing</b>	<b>18</b>	
Processed By:		
Contested before a Judge	3	18.8%
Contested before a Non-Judicial Officer	0	0.0%
Uncontested	11	68.8%
Other	2	12.5%
<b>Cases Processed</b>	<b>16</b>	<b>100.0%</b>
<b>Cases Pending 12/31/08</b>	<b>2</b>	

Accounts New Cases Filed, 1998-2008



# GREENE COUNTY

2008 Population Estimate: 39,344  
 Class of County: 6th  
 No. of Common Pleas Court Judgeships: 2

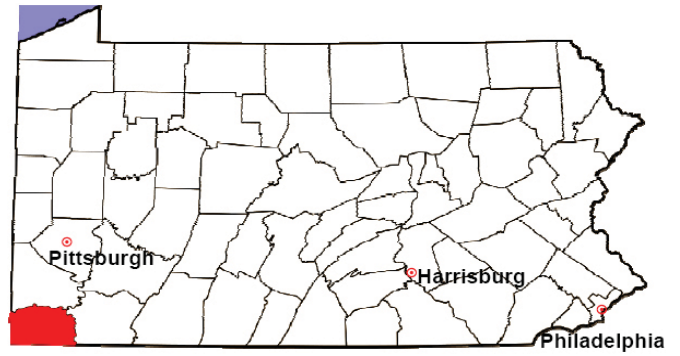


<b>2008 Adoptions</b>		No. of Cases	%
Cases Pending 1/1/08		3	
New Cases Filed in '08		14	
<b>Cases Available for Processing</b>		<b>17</b>	
Processed By:			
Contested before a Judge	Granted	0	0.0%
	Denied	0	0.0%
Uncontested	Granted	13	100.0%
	Denied	0	0.0%
Other		0	0.0%
<b>Cases Processed</b>		<b>13</b>	<b>100.0%</b>
<b>Cases Pending 12/31/08</b>		<b>4</b>	

Note: Prior to 2008, each petition was counted as one new case, regardless of the number of children listed on the petition. Starting in 2008, each child listed on a petition is counted as a separate case. Therefore, statistics for 2008 should not be compared with those for previous years.

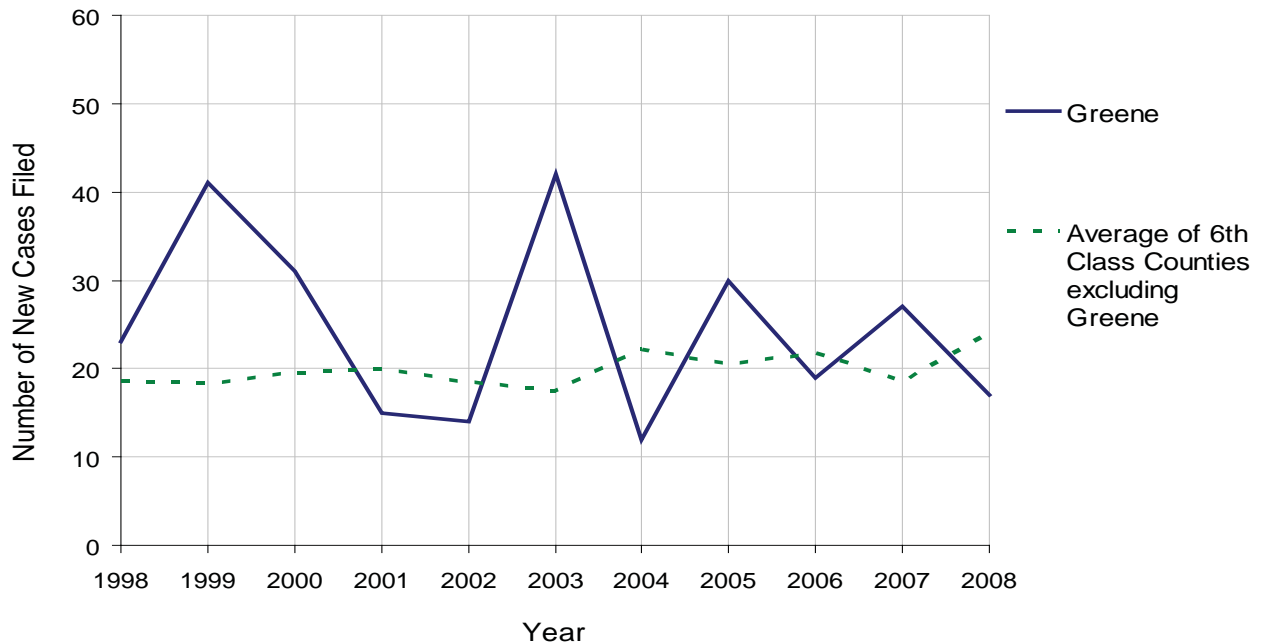
# GREENE COUNTY

2008 Population Estimate: 39,344  
 Class of County: 6th  
 No. of Common Pleas Court Judgeships: 2



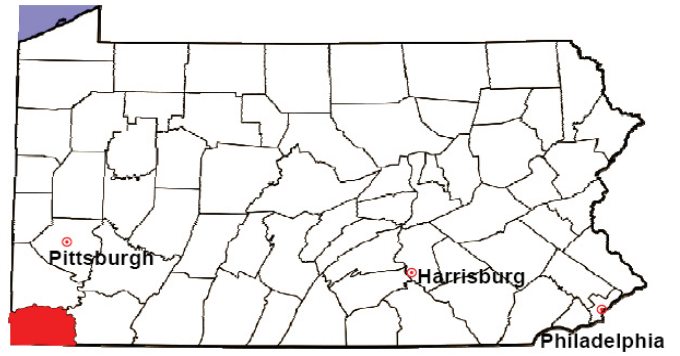
2008 Relinquishments/Terminations	No. of Petitions	%
Cases Pending 1/1/08	7	
New Cases Filed in '08	17	
<b>Cases Available for Processing</b>	<b>24</b>	
Processed By:		
Contested before a Judge	0	0.0%
Uncontested	13	86.7%
Other	2	13.3%
<b>Cases Processed</b>	<b>15</b>	<b>100.0%</b>
<b>Cases Pending 12/31/08</b>	<b>9</b>	

Relinquishments/Terminations New Cases Filed, 1998-2008



# GREENE COUNTY

2008 Population Estimate: 39,344  
 Class of County: 6th  
 No. of Common Pleas Court Judgeships: 2



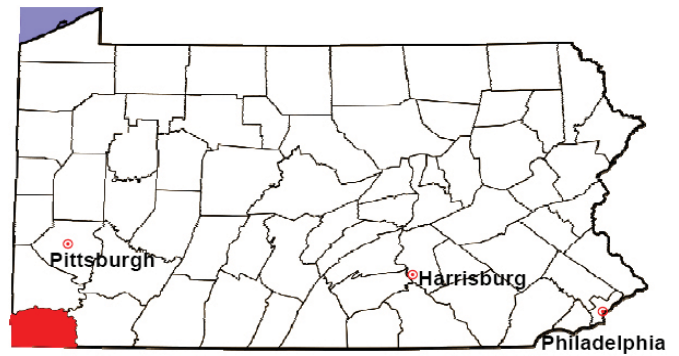
2008 Appointment of Guardians	No. of Petitions	%
Cases Pending 1/1/08	0	
New Cases Filed in '08	3	
<b>Cases Available for Processing</b>	<b>3</b>	
Processed By:		
Contested before a Judge	0	0.0%
Uncontested	2	66.7%
Other	1	33.3%
<b>Cases Processed</b>	<b>3</b>	<b>100.0%</b>
<b>Cases Pending 12/31/08</b>	<b>0</b>	

Appointment of Guardians New Cases Filed, 1998-2008



# GREENE COUNTY

2008 Population Estimate: 39,344  
 Class of County: 6th  
 No. of Common Pleas Court Judgeships: 2



2008 Jury Activity & Performance Measures		
A. Juror Days	1,210	
B. Number Sent to Voir Dire	1,103	
Voir Dire Attendance Rate $(B/A * 100)$		91.2%
C. Number of Voir Dires Started	37	
Juror Days Per Voir Dire Starts $(A/C)$		33
D. Number of Jurors Selected	520	
Juror Selection Rate $(D/B * 100)$		47.1%
E. Number of Jury Trials Started	32	
Juror Days Per Trial Starts $(A/E)$		38
Number of Voir Dires Not Resulting in Trial $(C-E)$		5
Percent Voir Dires Not Resulting in Trial $(C-E)/C * 100$		13.5%
F. Pool Days	12	
G. Zero Panel Days	3	
Percent Zero Panel Days $(G/F * 100)$		25.0%
H. Total Juror Fees Incurred	\$30,282	
Average Juror Fees Per Trial $(H/E)$		\$946

Average Juror Fees Per Trial, 1998-2008

