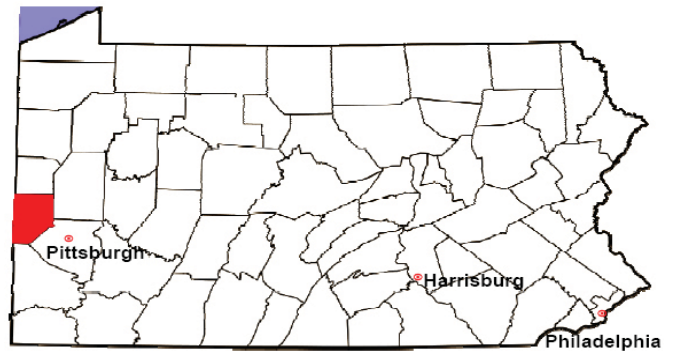


BEAVER COUNTY

2008 Population Estimate: 172,476

Class of County: 4th

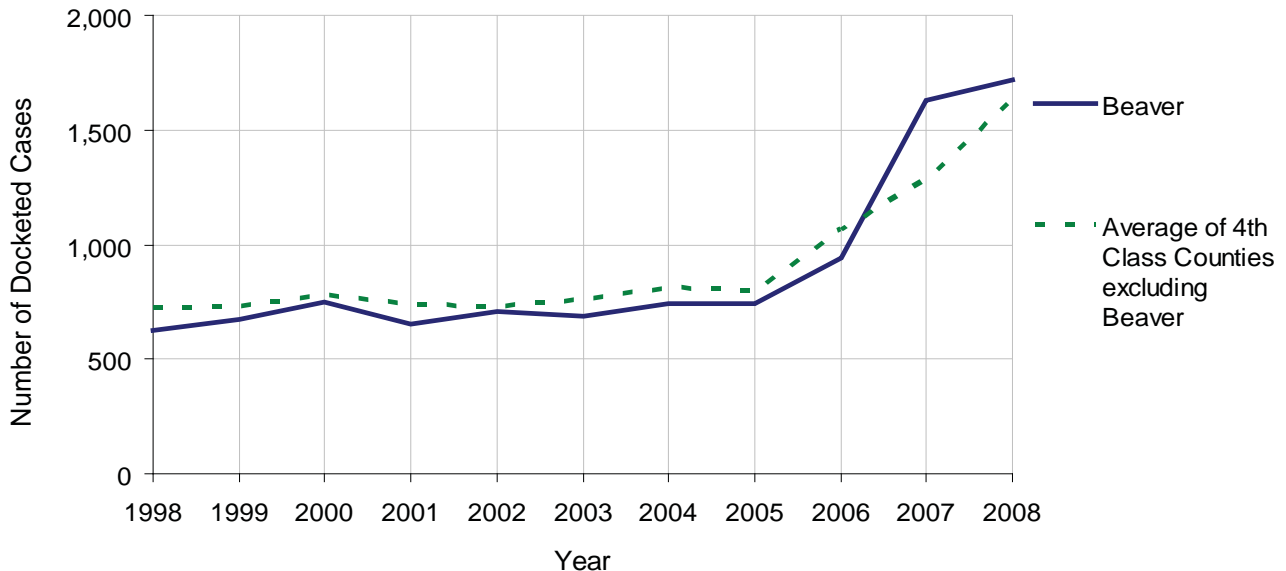
No. of Common Pleas Court Judgeships: 7



2008 Civil		Civil Action		
Docketed Cases		1,716		
Arbitrated Cases		50		
Trial-Ready Cases:		Civil Action	Other	Total
Cases Pending 1/1/08		46	6	52
Became Trial Ready in '08		80	4	84
Restored to Trial List		0	0	0
Appeals from Arbitration		10	0	10
Cases Available for Trial		136	10	146
Disposed By:				
Settlement		56	0	56
Non-Jury Trial		13	0	13
Jury Trial		10	0	10
Stricken from Trial List		4	0	4
Other		13	0	13
Cases Disposed		96	0	96
Cases Pending 12/31/08		40	10	50

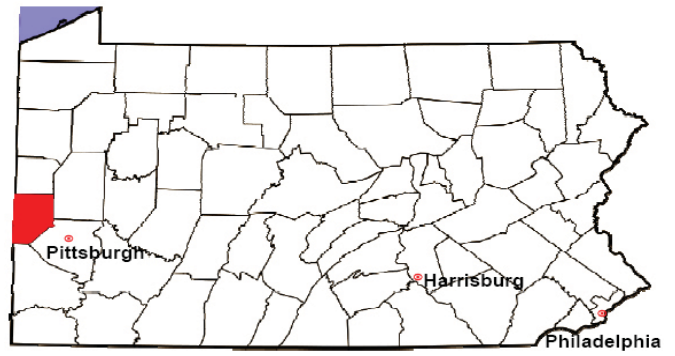
Age of Trial-Ready Cases as of 12/31/08 (Civil Action Only)		
0-6 months	25	63%
7-12 months	6	15%
13-18 months	2	5%
19-24 months	4	10%
25-30 months	3	8%
31-36 months	0	0%
Over 36 months	0	0%
Total	40	100%

Docketed Cases, 1998-2008



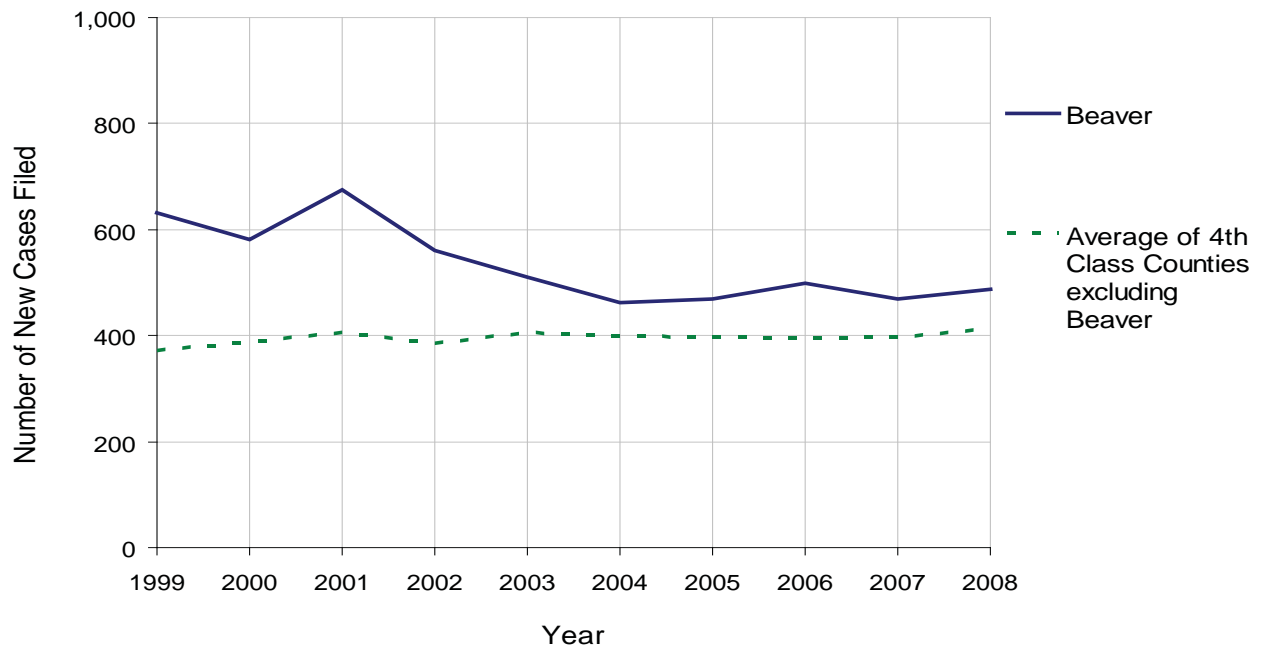
BEAVER COUNTY

2008 Population Estimate: 172,476
 Class of County: 4th
 No. of Common Pleas Court Judgeships: 7



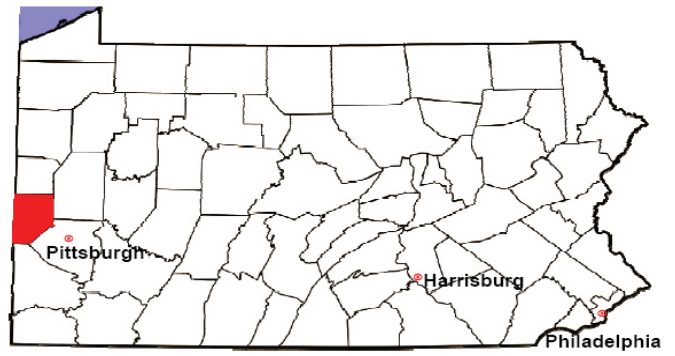
2008 Protection From Abuse	No. of Petitions	%
Cases Pending 1/1/08	88	
New Cases Filed in '08	488	
Cases Available for Processing	576	
Processed By:		
Final Order After Hearing	87	17.8%
Final Order by Stipulation or Agreement	138	28.3%
Dismissal	225	46.1%
Withdrawal	38	7.8%
Other	0	0.0%
Cases Processed	488	100.0%
Cases Pending 12/31/08	88	

PFA New Cases Filed, 1999-2008



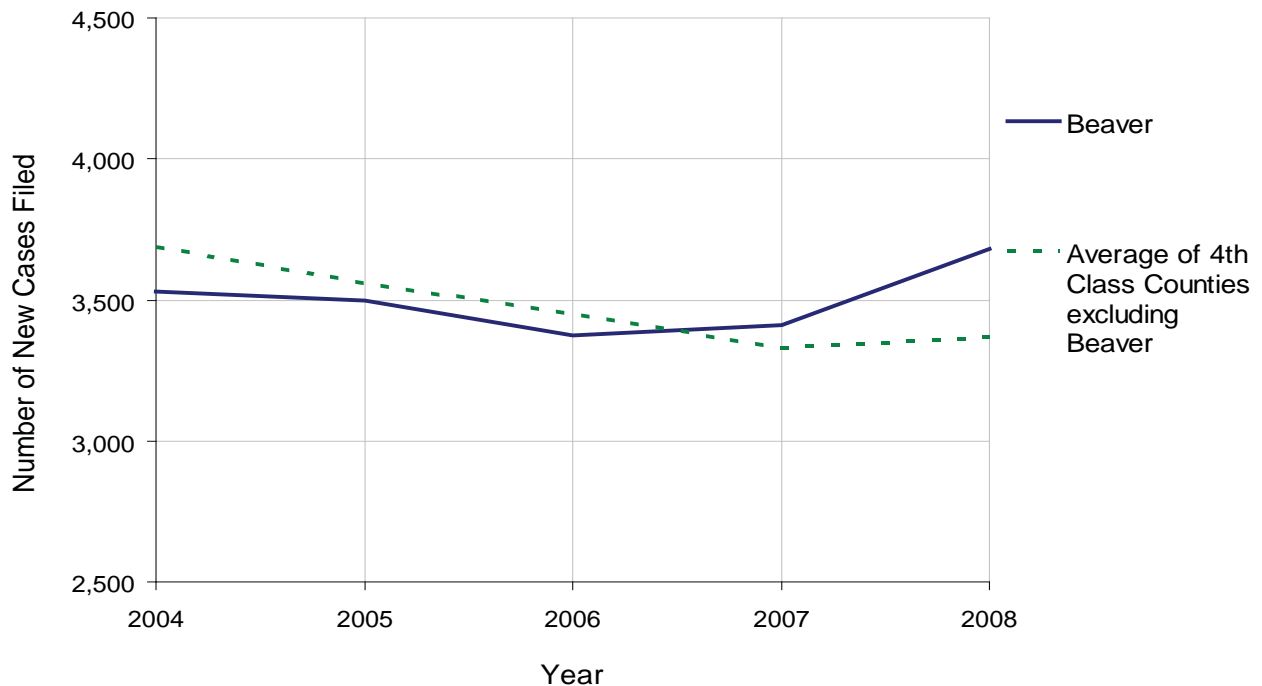
BEAVER COUNTY

2008 Population Estimate: 172,476
 Class of County: 4th
 No. of Common Pleas Court Judgeships: 7



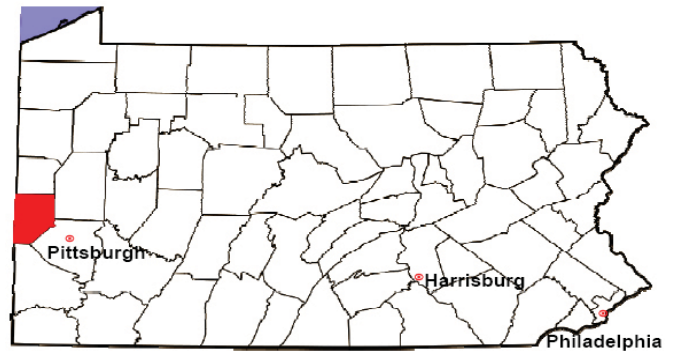
2008 Spousal & Child Support	No. of Petitions	%
Cases Pending 1/1/08	621	
New Cases Filed in '08	3,679	
Dockets Transferred In (+)	24	
Dockets Transferred Out (-)	48	
Cases Available for Processing	4,276	
Processed By:		
Judge	218	5.9%
Intake Officer	3,481	94.1%
Hearing Officer	0	0.0%
Other	0	0.0%
Cases Processed	3,699	100.0%
Cases Pending 12/31/08	577	

Spousal & Child Support New Cases Filed, 1998-2008



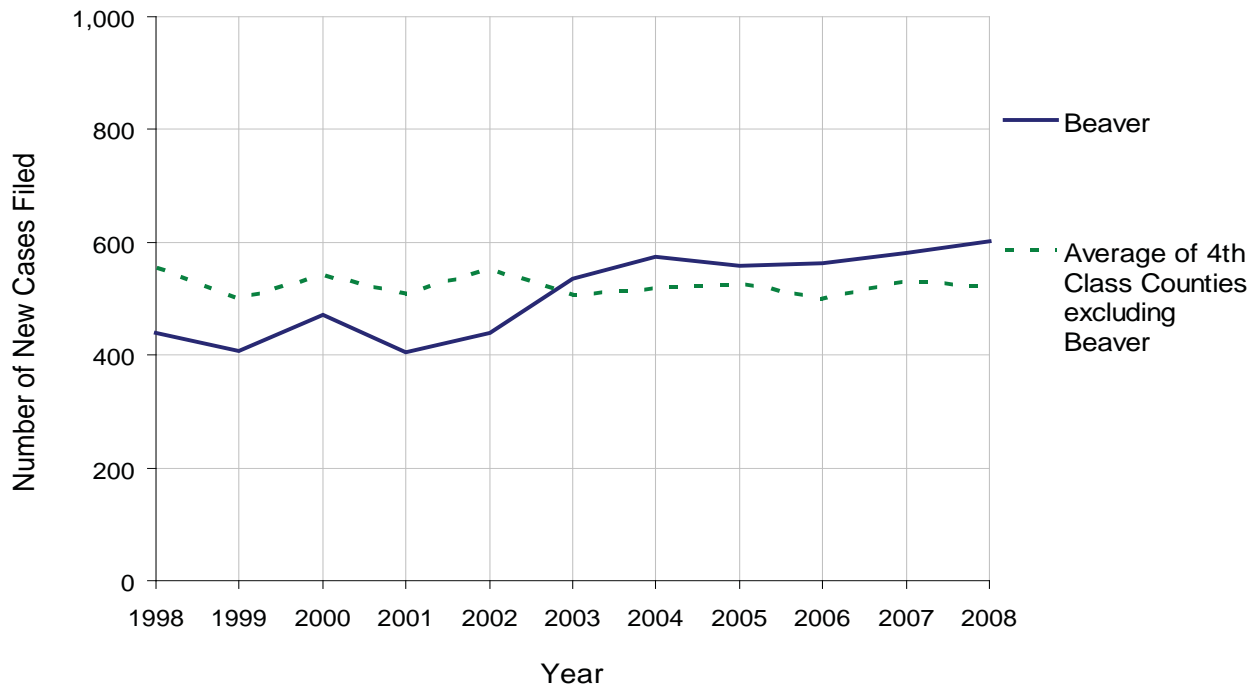
BEAVER COUNTY

2008 Population Estimate: 172,476
 Class of County: 4th
 No. of Common Pleas Court Judgeships: 7



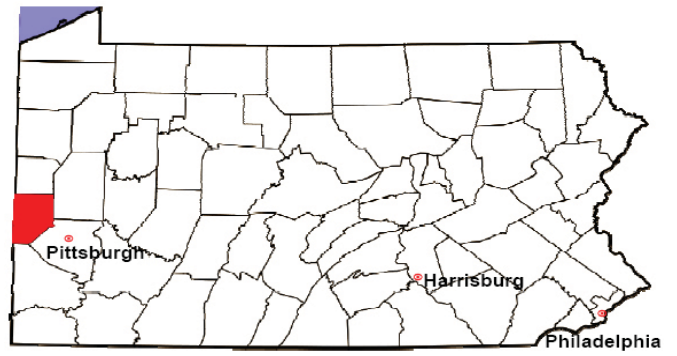
2008 Custody/Partial Custody/Visitation	No. of Petitions	%
Cases Pending 1/1/08	183	
New Cases Filed in '08	601	
Cases Available for Processing	784	
Processed By:		
Judge	168	27.6%
Non-Judicial Officer	420	69.0%
Other	21	3.4%
Cases Processed	609	100.0%
Cases Pending 12/31/08	175	

Custody/Partial Custody/Visitation New Cases Filed
 1998-2008



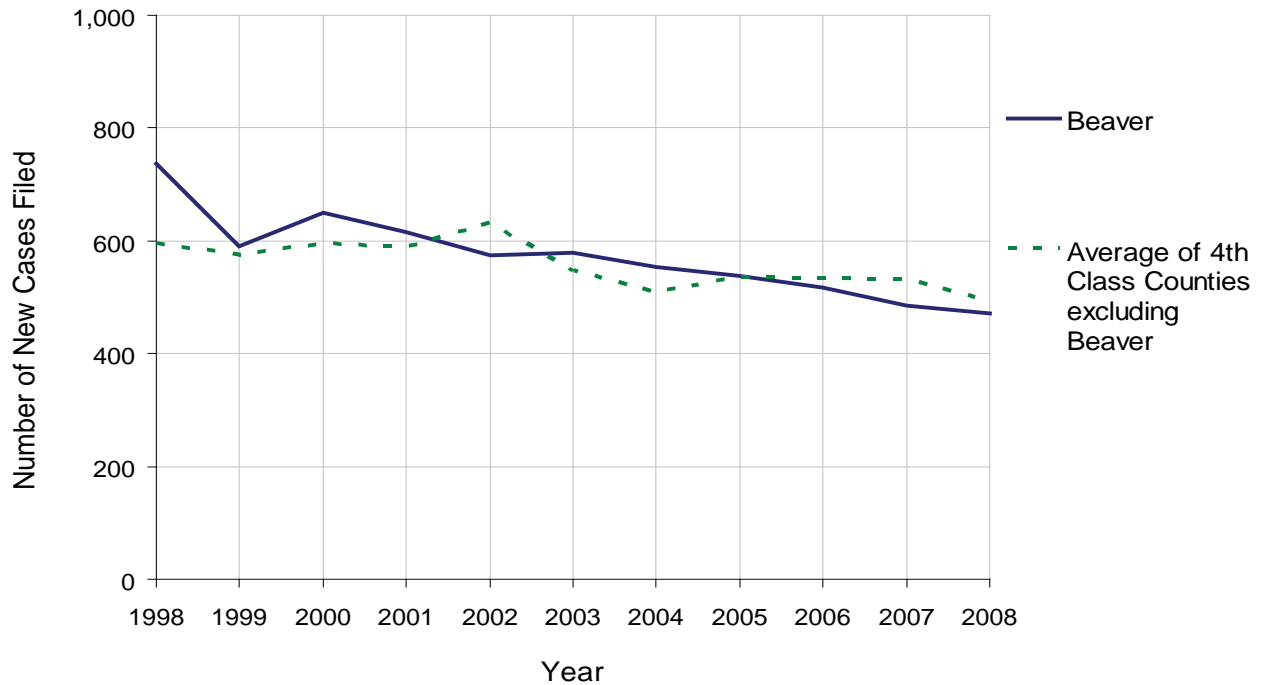
BEAVER COUNTY

2008 Population Estimate: 172,476
 Class of County: 4th
 No. of Common Pleas Court Judgeships: 7



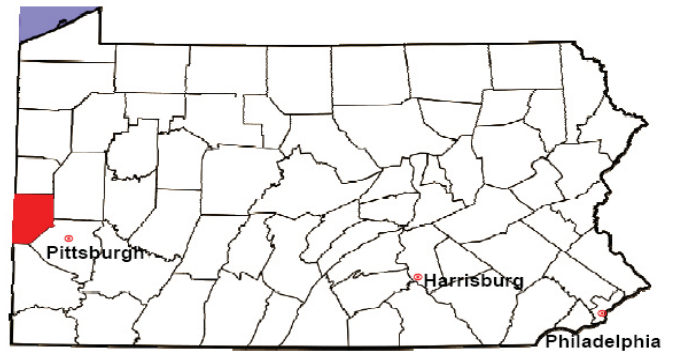
2008 Divorce	No. of Petitions	%
Cases Pending 1/1/08	1,230	
New Cases Filed in '08	471	
Cases Available for Processing	1,701	
Processed By:		
Contested Before a Judge	137	14.3%
Contested Before a Master	0	0.0%
Uncontested	323	33.7%
Other	498	52.0%
Cases Processed	958	100.0%
Cases Pending 12/31/08	743	

Divorce New Cases Filed, 1998-2008



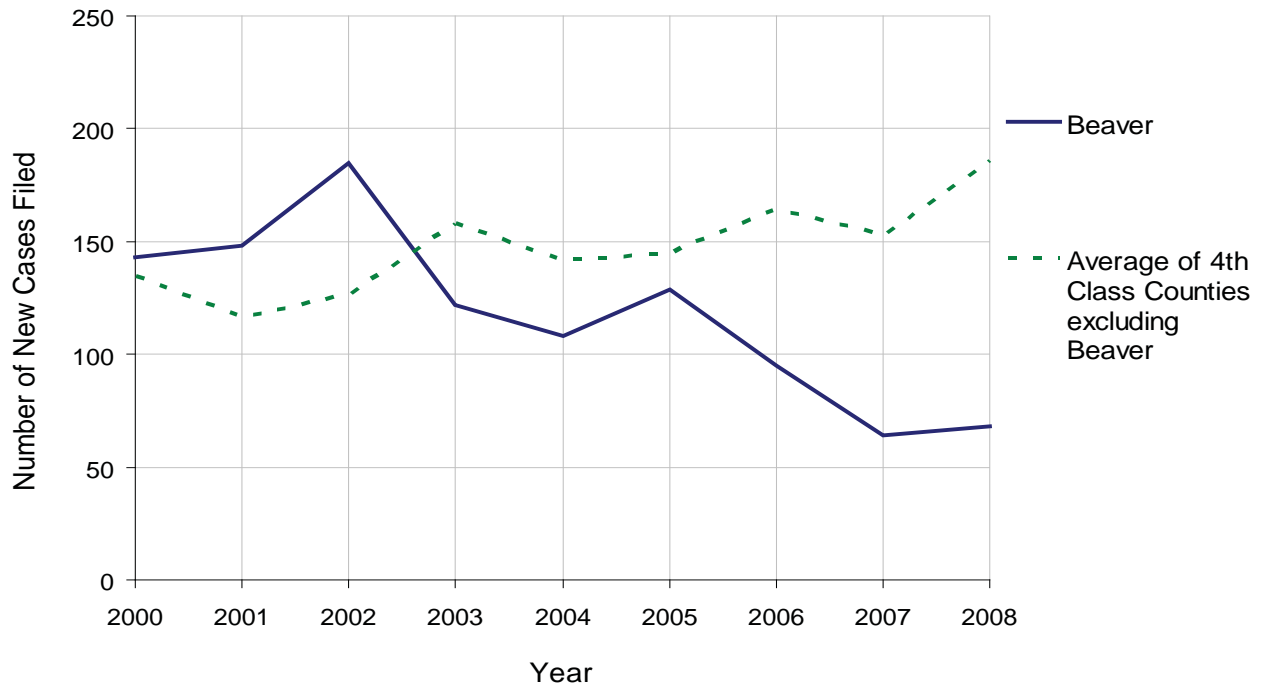
BEAVER COUNTY

2008 Population Estimate: 172,476
 Class of County: 4th
 No. of Common Pleas Court Judgeships: 7



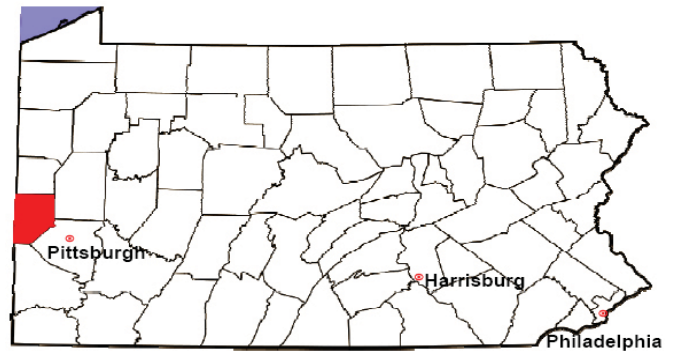
2008 Juvenile Dependency Abuse/Neglect	No. of Petitions	%
Cases Pending 1/1/08	0	
New Cases Filed in '08	68	
Cases Available for Processing	68	
Processed By:		
Judge	0	0.0%
Non-Judicial Officer	51	83.6%
Other	10	16.4%
Cases Processed	61	100.0%
Cases Pending 12/31/08	7	

Abuse/Neglect New Cases Filed, 2000-2008



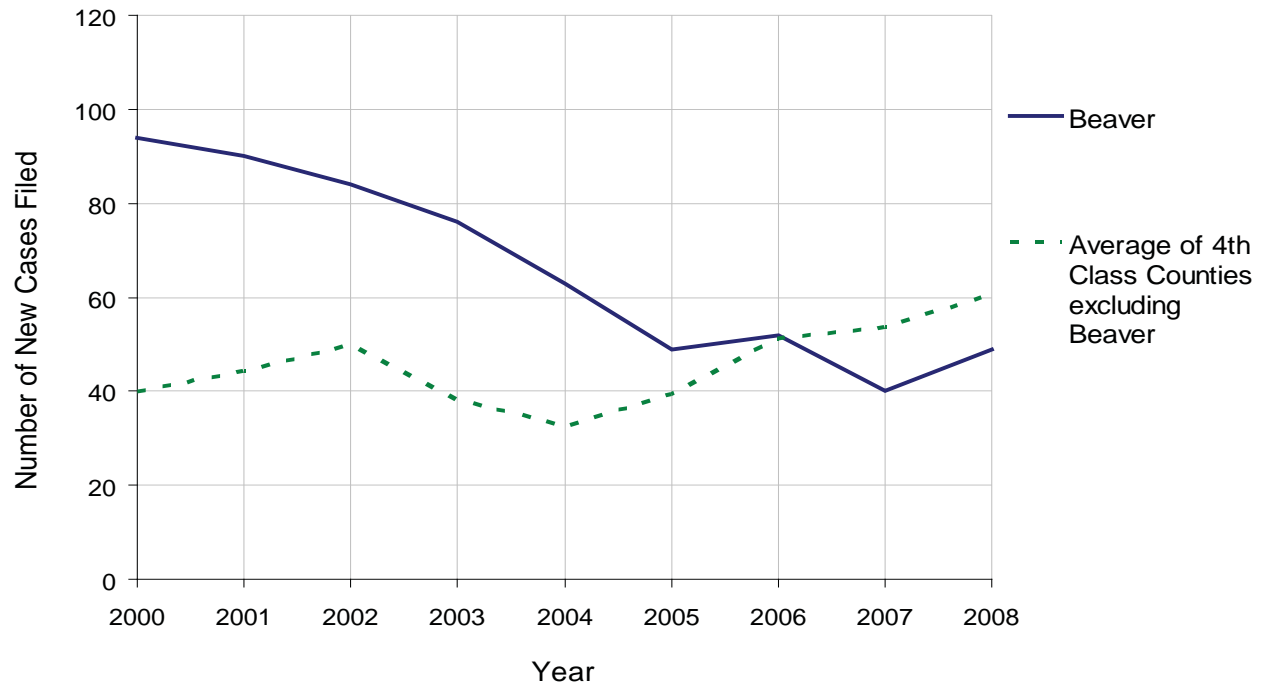
BEAVER COUNTY

2008 Population Estimate: 172,476
 Class of County: 4th
 No. of Common Pleas Court Judgeships: 7



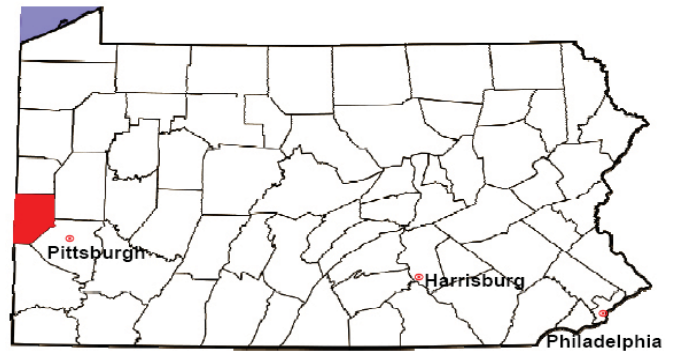
2008 Juvenile Dependency Status Offenses	No. of Petitions	%
Cases Pending 1/1/08	1	
New Cases Filed in '08	49	
Cases Available for Processing	50	
Processed By:		
Judge	0	0.0%
Non-Judicial Officer	35	79.5%
Other	9	20.5%
Cases Processed	44	100.0%
Cases Pending 12/31/08	6	

Status Offenses New Cases Filed, 2000-2008



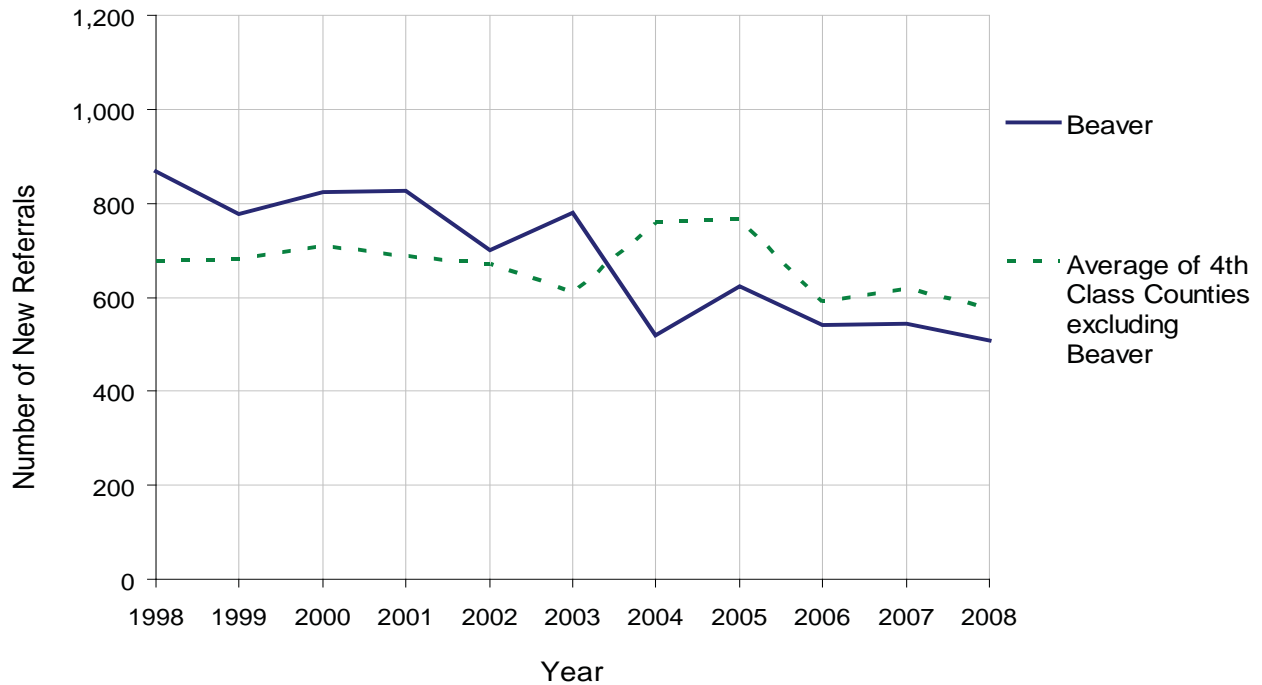
BEAVER COUNTY

2008 Population Estimate: 172,476
 Class of County: 4th
 No. of Common Pleas Court Judgeships: 7



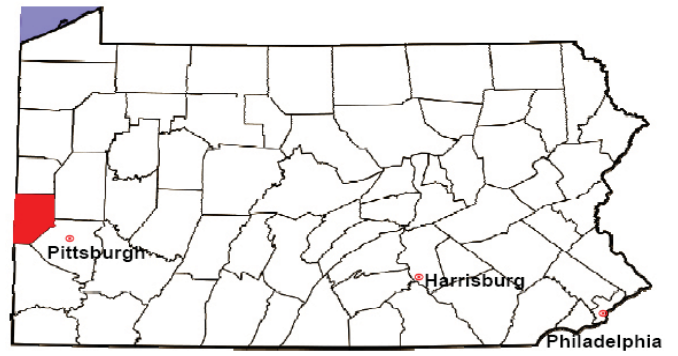
2008 Juvenile Delinquency	No. of Referrals	%
Cases Pending 1/1/08	58	
New Referrals in '08	507	
Cases Available for Processing	565	
Processed By:		
Judge	84	16.2%
Non-Judicial Officer	343	66.2%
Other	91	17.6%
Cases Processed	518	100.0%
Cases Pending 12/31/08	47	

Juvenile Delinquency New Referrals, 1998-2008



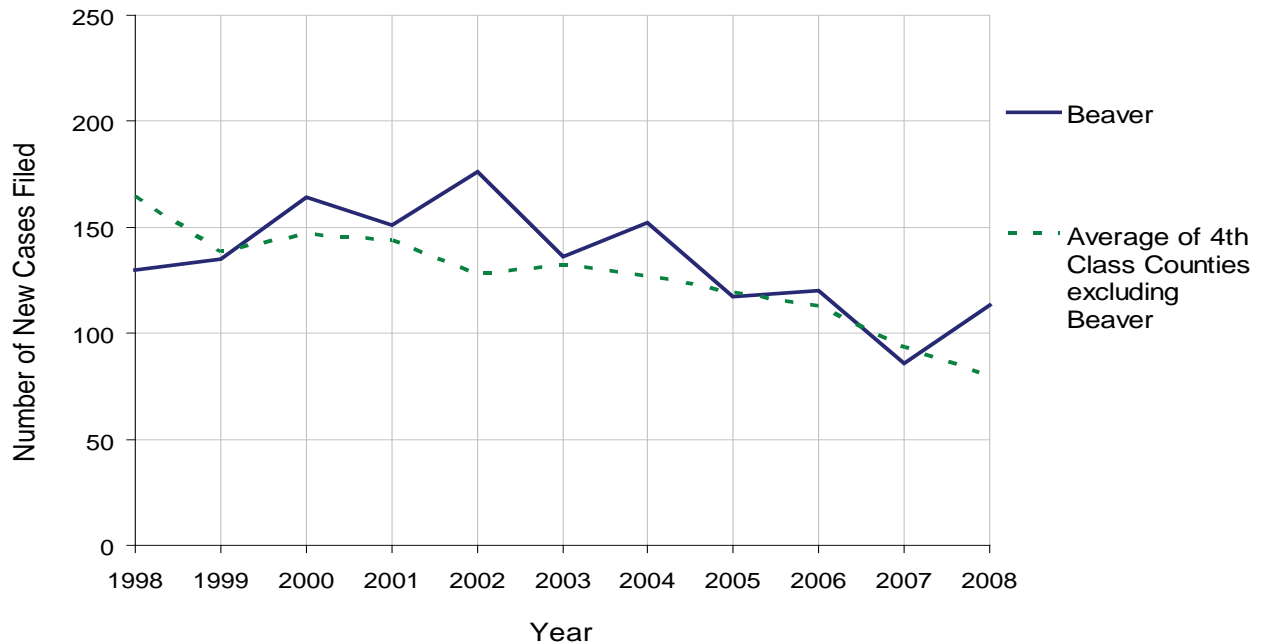
BEAVER COUNTY

2008 Population Estimate: 172,476
 Class of County: 4th
 No. of Common Pleas Court Judgeships: 7



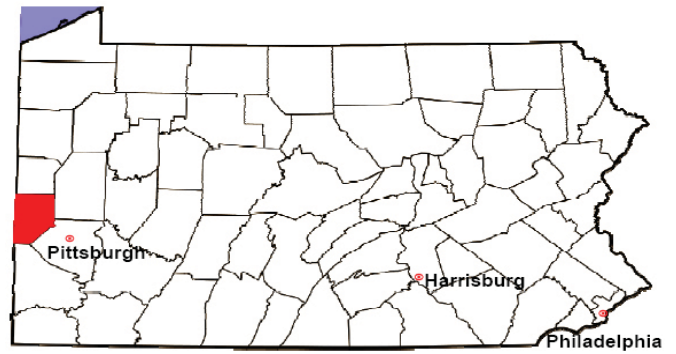
2008 Accounts	No. of Accounts	%
Cases Pending 1/1/08	12	
New Cases Filed in '08	113	
Cases Available for Processing	125	
Processed By:		
Contested before a Judge	3	3.0%
Contested before a Non-Judicial Officer	1	1.0%
Uncontested	97	96.0%
Other	0	0.0%
Cases Processed	101	100.0%
Cases Pending 12/31/08	24	

Accounts New Cases Filed, 1998-2008



BEAVER COUNTY

2008 Population Estimate: 172,476
 Class of County: 4th
 No. of Common Pleas Court Judgeships: 7

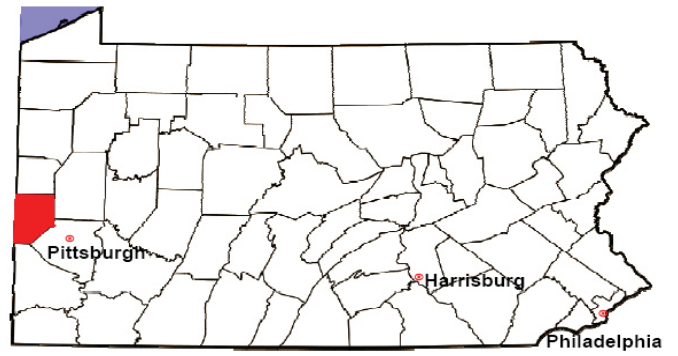


2008 Adoptions		No. of Cases	%
Cases Pending 1/1/08		6	
New Cases Filed in '08		79	
Cases Available for Processing		85	
Processed By:			
Contested before a Judge	Granted	0	0.0%
	Denied	1	1.4%
Uncontested	Granted	67	97.1%
	Denied	1	1.4%
Other		0	0.0%
Cases Processed		69	100.0%
Cases Pending 12/31/08		16	

Note: Prior to 2008, each petition was counted as one new case, regardless of the number of children listed on the petition. Starting in 2008, each child listed on a petition is counted as a separate case. Therefore, statistics for 2008 should not be compared with those for previous years.

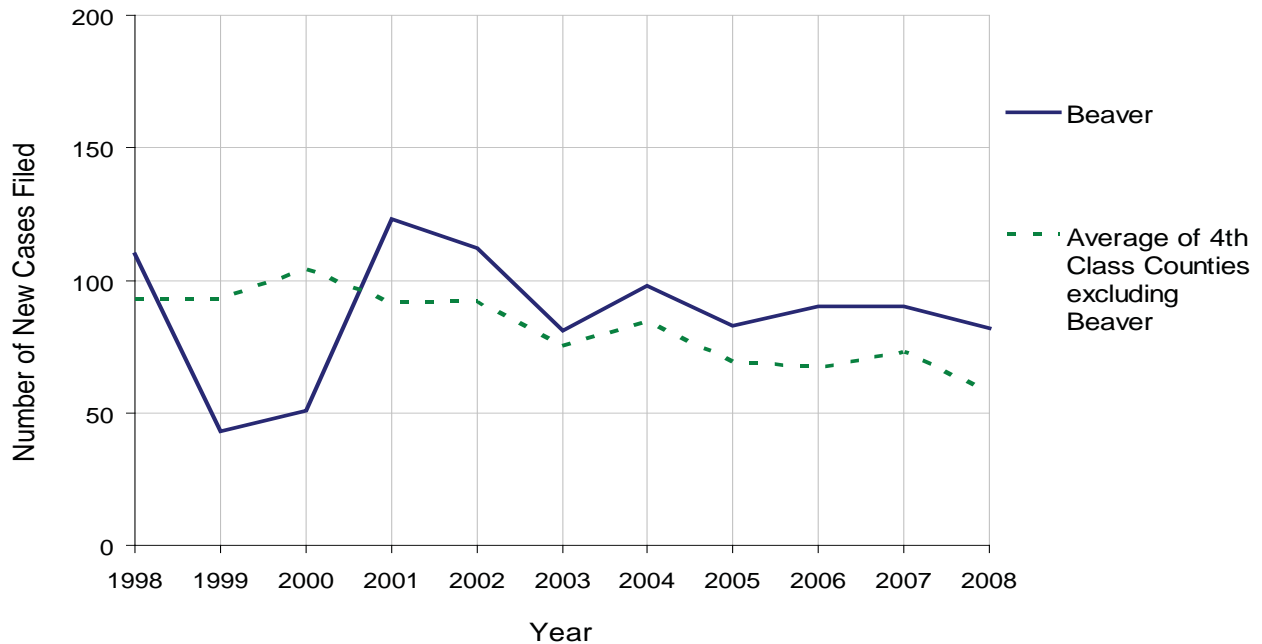
BEAVER COUNTY

2008 Population Estimate: 172,476
 Class of County: 4th
 No. of Common Pleas Court Judgeships: 7



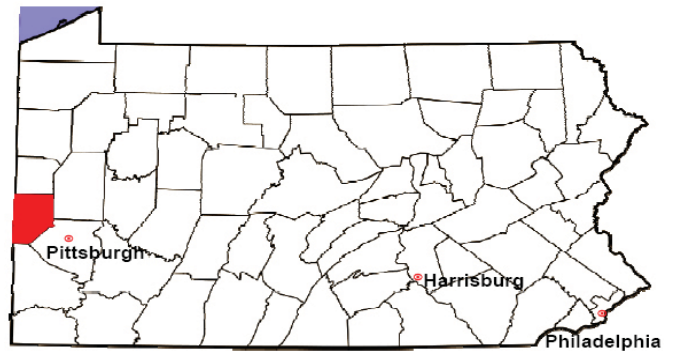
2008 Relinquishments/Terminations	No. of Petitions	%
Cases Pending 1/1/08	21	
New Cases Filed in '08	82	
Cases Available for Processing	103	
Processed By:		
Contested before a Judge	9	9.4%
Uncontested	84	87.5%
Other	3	3.1%
Cases Processed	96	100.0%
Cases Pending 12/31/08	7	

Relinquishments/Terminations New Cases Filed, 1998-2008



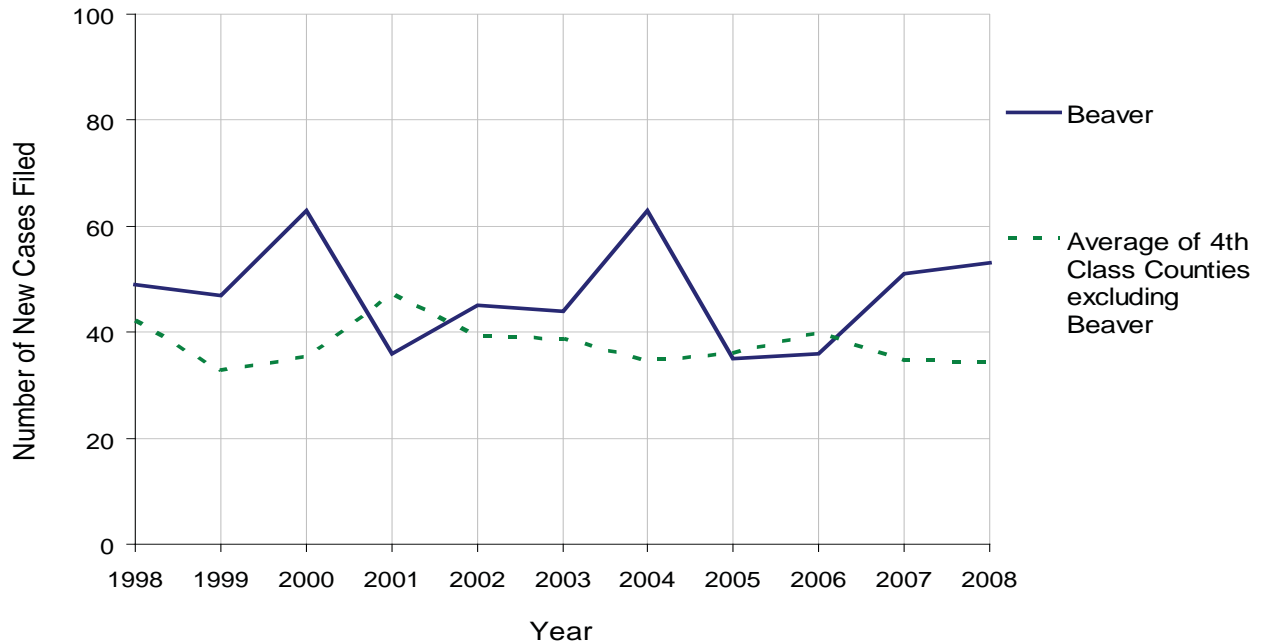
BEAVER COUNTY

2008 Population Estimate: 172,476
 Class of County: 4th
 No. of Common Pleas Court Judgeships: 7



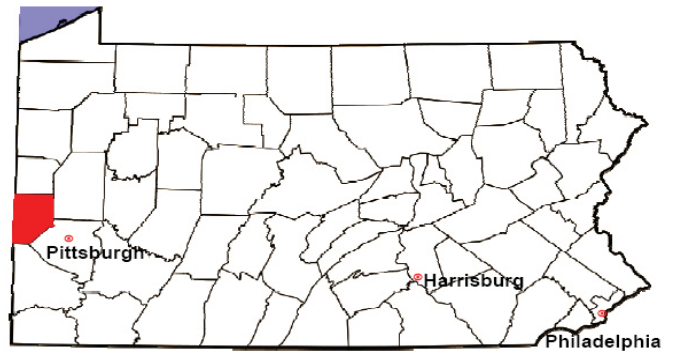
2008 Appointment of Guardians	No. of Petitions	%
Cases Pending 1/1/08	14	
New Cases Filed in '08	53	
Cases Available for Processing	67	
Processed By:		
Contested before a Judge	13	21.7%
Uncontested	36	60.0%
Other	11	18.3%
Cases Processed	60	100.0%
Cases Pending 12/31/08	7	

Appointment of Guardians New Cases Filed, 1998-2008



BEAVER COUNTY

2008 Population Estimate: 172,476
 Class of County: 4th
 No. of Common Pleas Court Judgeships: 7



2008 Jury Activity & Performance Measures		
A. Juror Days	2,946	
B. Number Sent to Voir Dire	3,334	
Voir Dire Attendance Rate $(B/A * 100)$		113.2%
C. Number of Voir Dires Started	89	
Juror Days Per Voir Dire Starts (A/C)		33
D. Number of Jurors Selected	478	
Juror Selection Rate $(D/B * 100)$		14.3%
E. Number of Jury Trials Started	33	
Juror Days Per Trial Starts (A/E)		89
Number of Voir Dires Not Resulting in Trial $(C-E)$		56
Percent Voir Dires Not Resulting in Trial $(C-E)/C * 100$		62.9%
F. Pool Days	45	
G. Zero Panel Days	0	
Percent Zero Panel Days $(G/F * 100)$		0.0%
H. Total Juror Fees Incurred	\$54,784	
Average Juror Fees Per Trial (H/E)		\$1,660

Average Juror Fees Per Trial, 1998-2008

