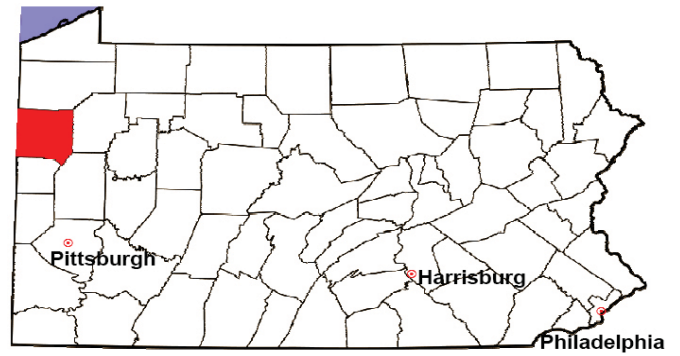


MERCER COUNTY

2008 Population Estimate: 116,652

Class of County: 5th

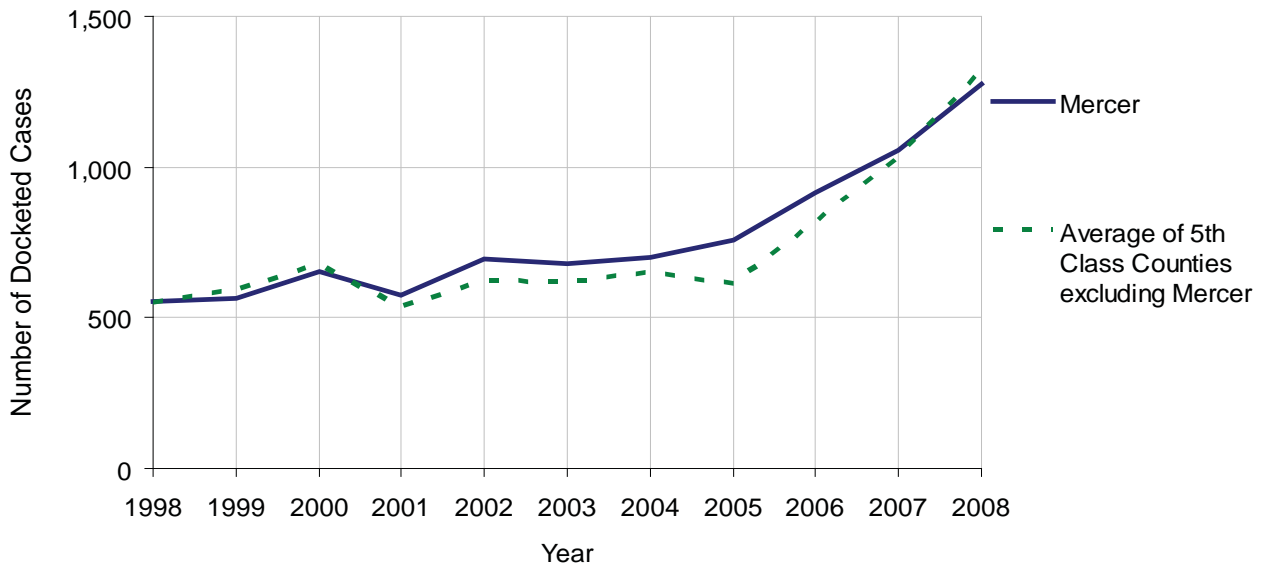
No. of Common Pleas Court Judgeships: 4



2008 Civil		Civil Action		
Docketed Cases		1,277		
Arbitrated Cases		24		
Trial-Ready Cases:		Civil Action	Other	Total
Cases Pending 1/1/08		21	1	22
Became Trial Ready in '08		55	5	60
Restored to Trial List		10	0	10
Appeals from Arbitration		5	0	5
Cases Available for Trial		91	6	97
Disposed By:				
Settlement		38	4	42
Non-Jury Trial		1	0	1
Jury Trial		5	0	5
Stricken from Trial List		18	1	19
Other		15	0	15
Cases Disposed		77	5	82
Cases Pending 12/31/08		14	1	15

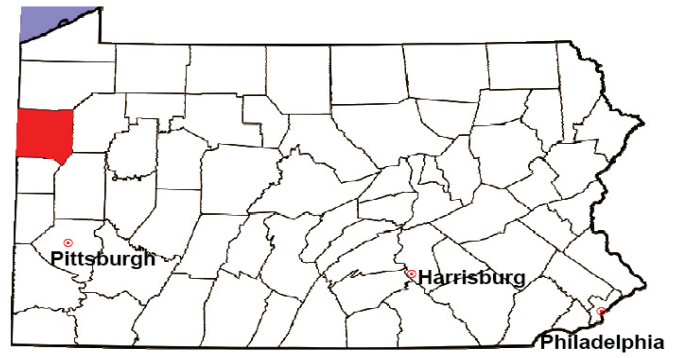
Age of Trial-Ready Cases as of 12/31/08 (Civil Action Only)		
0-6 months	12	86%
7-12 months	2	14%
13-18 months	0	0%
19-24 months	0	0%
25-30 months	0	0%
31-36 months	0	0%
Over 36 months	0	0%
Total	14	100%

Docketed Cases, 1998-2008



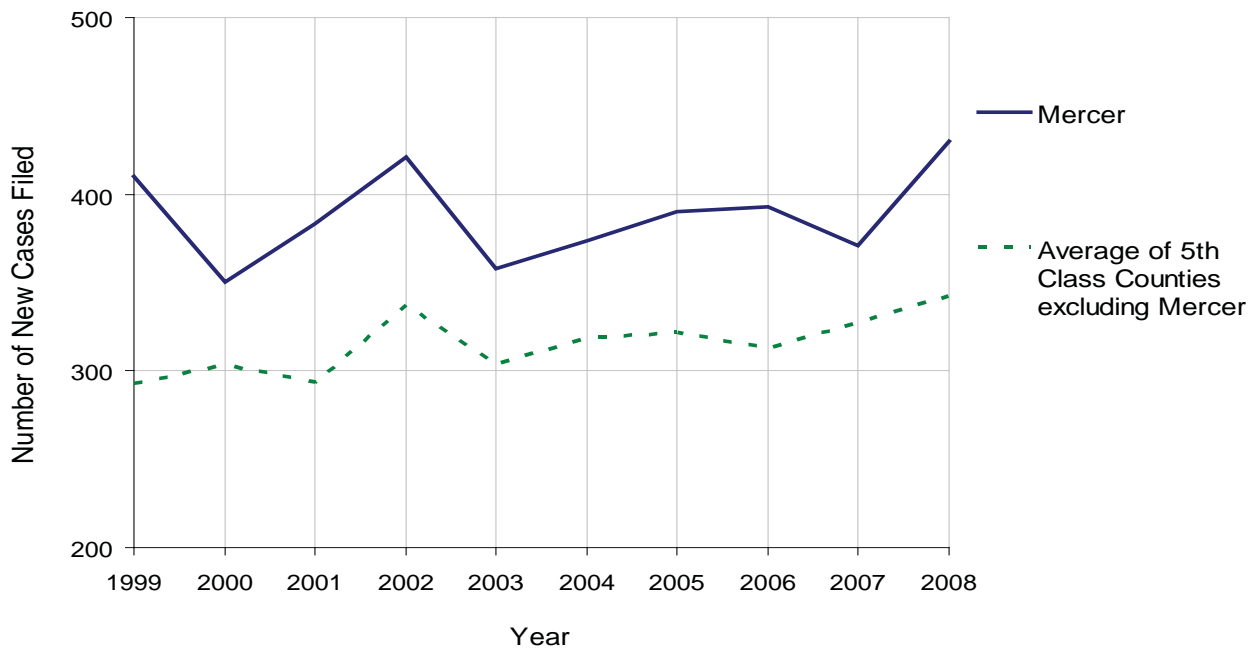
MERCER COUNTY

2008 Population Estimate: 116,652
 Class of County: 5th
 No. of Common Pleas Court Judgeships: 4



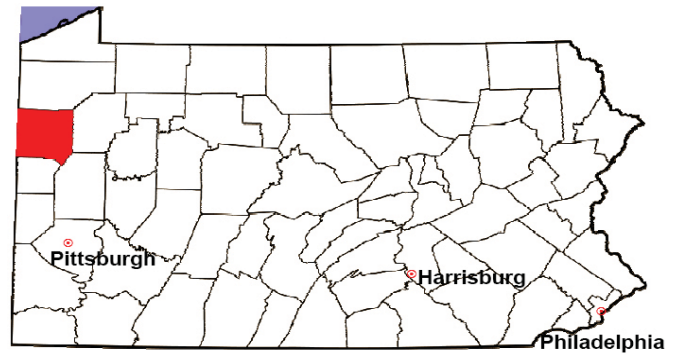
2008 Protection From Abuse	No. of Petitions	%
Cases Pending 1/1/08	12	
New Cases Filed in '08	430	
Cases Available for Processing	442	
Processed By:		
Final Order After Hearing	76	17.5%
Final Order by Stipulation or Agreement	91	21.0%
Dismissal	127	29.3%
Withdrawal	139	32.0%
Other	1	0.2%
Cases Processed	434	100.0%
Cases Pending 12/31/08	8	

PFA New Cases Filed, 1999-2008



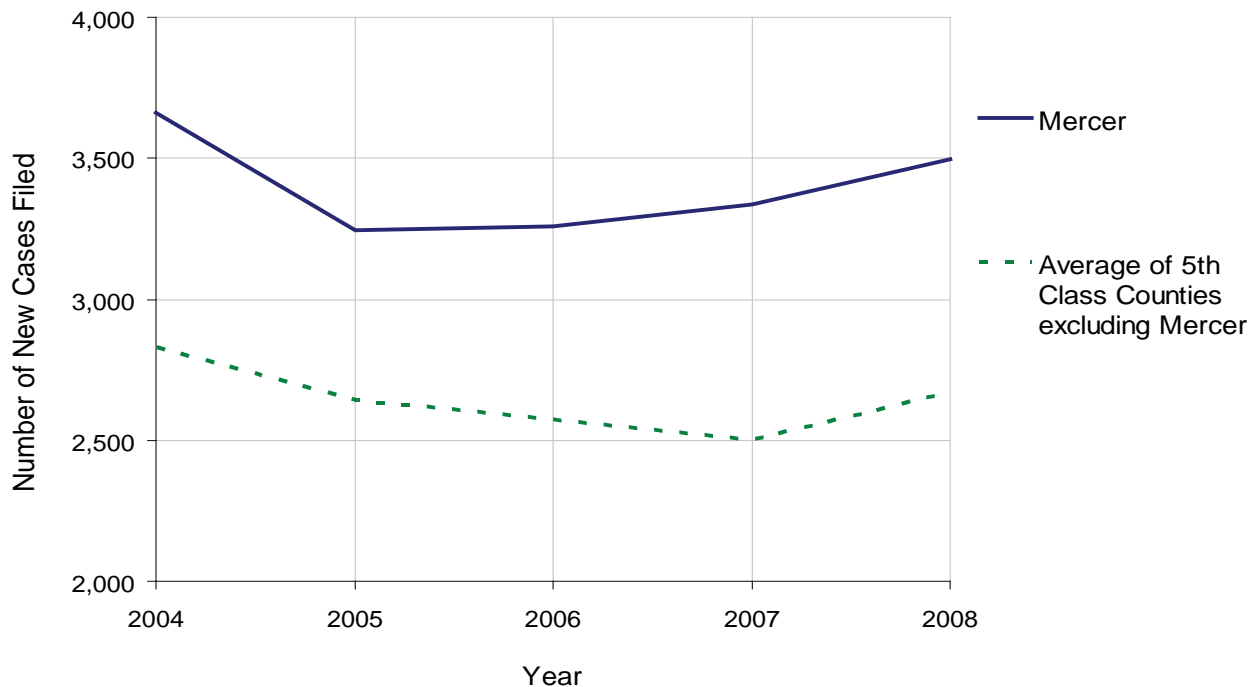
MERCER COUNTY

2008 Population Estimate: 116,652
 Class of County: 5th
 No. of Common Pleas Court Judgeships: 4



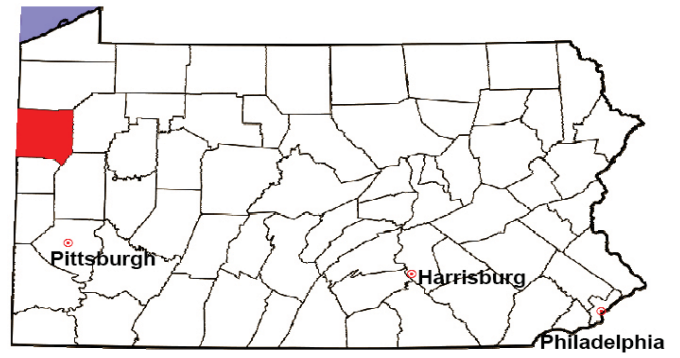
2008 Spousal & Child Support	No. of Petitions	%
Cases Pending 1/1/08	474	
New Cases Filed in '08	3,495	
Dockets Transferred In (+)	22	
Dockets Transferred Out (-)	41	
Cases Available for Processing	3,950	
Processed By:		
Judge	140	4.5%
Intake Officer	2,999	95.5%
Hearing Officer	0	0.0%
Other	0	0.0%
Cases Processed	3,139	100.0%
Cases Pending 12/31/08	811	

Spousal & Child Support New Cases Filed, 1998-2008



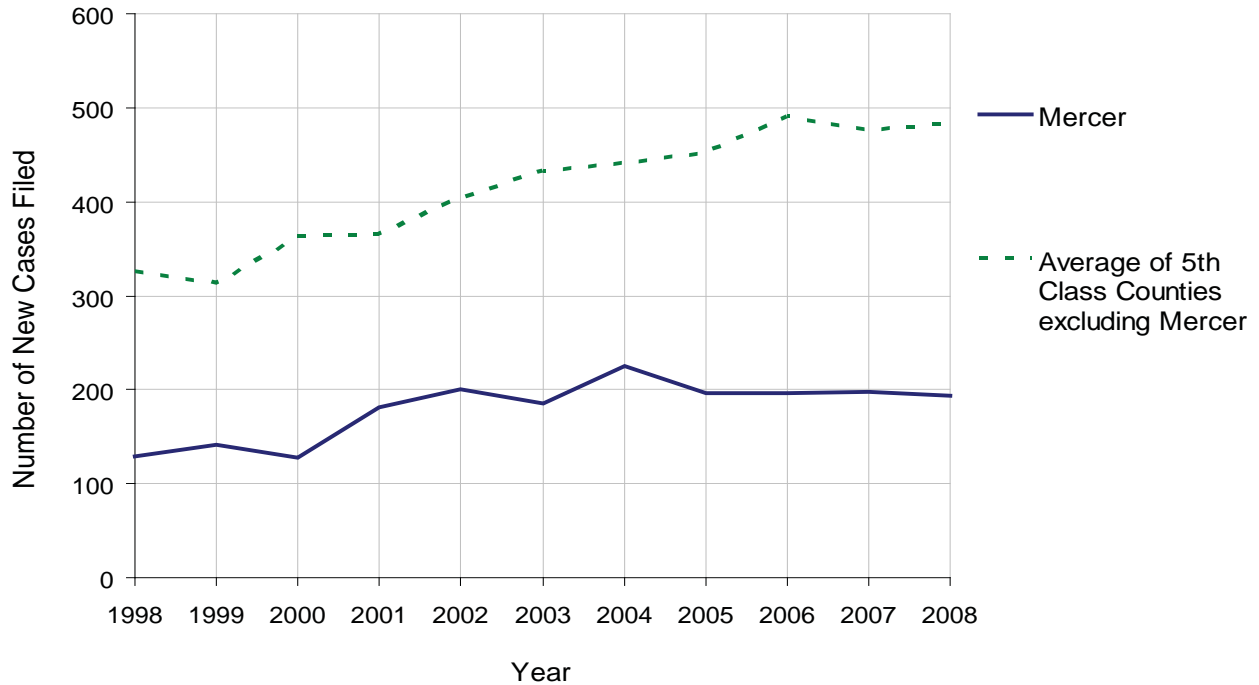
MERCER COUNTY

2008 Population Estimate: 116,652
 Class of County: 5th
 No. of Common Pleas Court Judgeships: 4



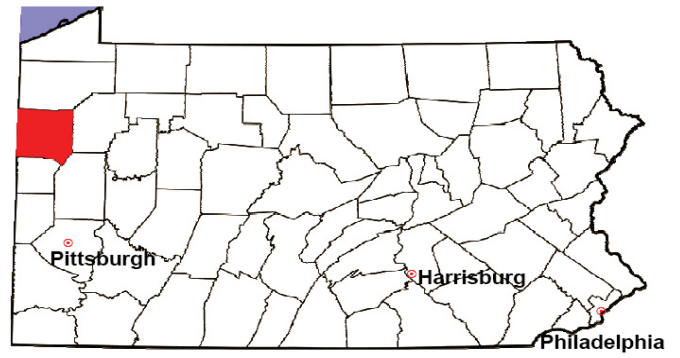
2008 Custody/Partial Custody/Visitation	No. of Petitions	%
Cases Pending 1/1/08	24	
New Cases Filed in '08	193	
Cases Available for Processing	217	
Processed By:		
Judge	105	57.1%
Non-Judicial Officer	77	41.8%
Other	2	1.1%
Cases Processed	184	100.0%
Cases Pending 12/31/08	33	

Custody/Partial Custody/Visitation New Cases Filed
 1998-2008



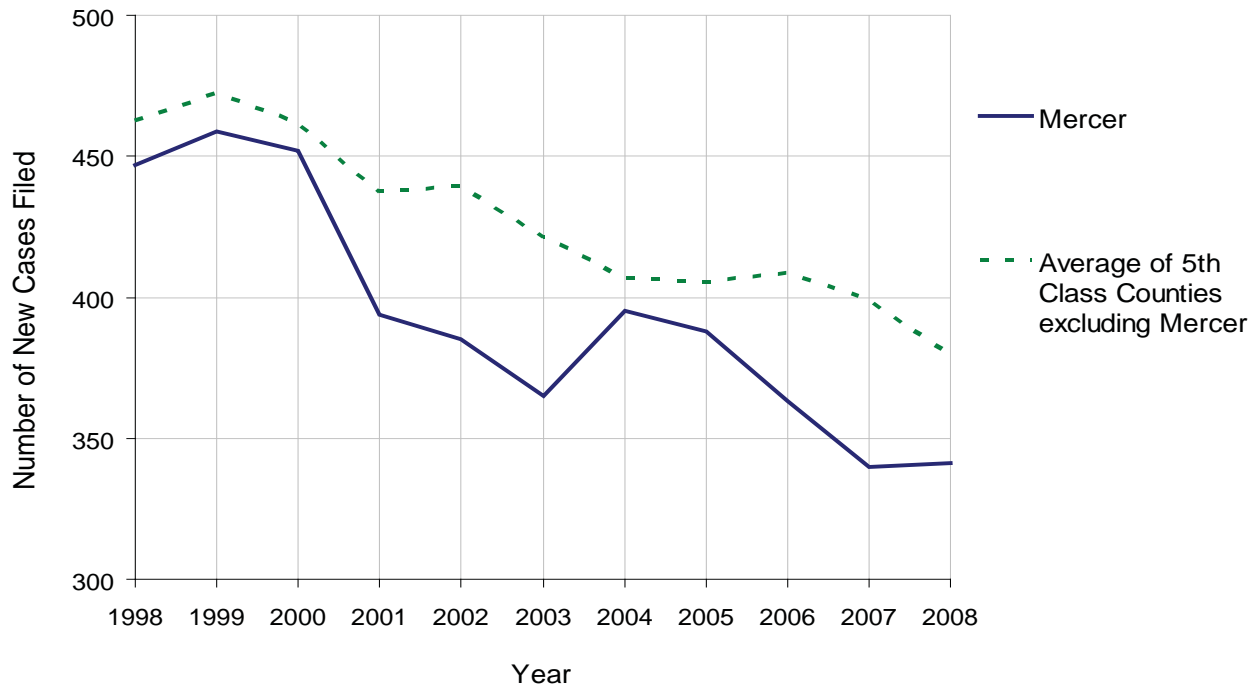
MERCER COUNTY

2008 Population Estimate: 116,652
 Class of County: 5th
 No. of Common Pleas Court Judgeships: 4



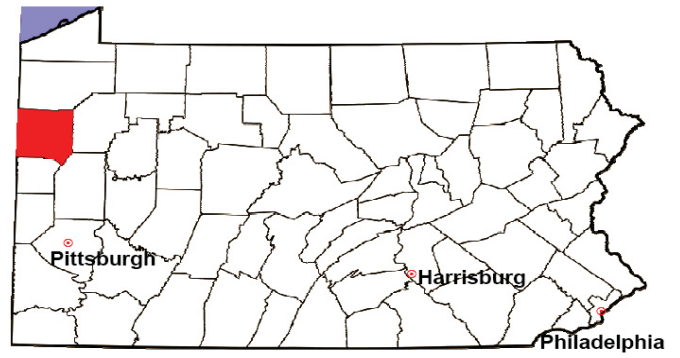
2008 Divorce	No. of Petitions	%
Cases Pending 1/1/08	469	
New Cases Filed in '08	341	
Cases Available for Processing	810	
Processed By:		
Contested Before a Judge	0	0.0%
Contested Before a Master	42	12.8%
Uncontested	232	70.7%
Other	54	16.5%
Cases Processed	328	100.0%
Cases Pending 12/31/08	482	

Divorce New Cases Filed, 1998-2008



MERCER COUNTY

2008 Population Estimate: 116,652
 Class of County: 5th
 No. of Common Pleas Court Judgeships: 4



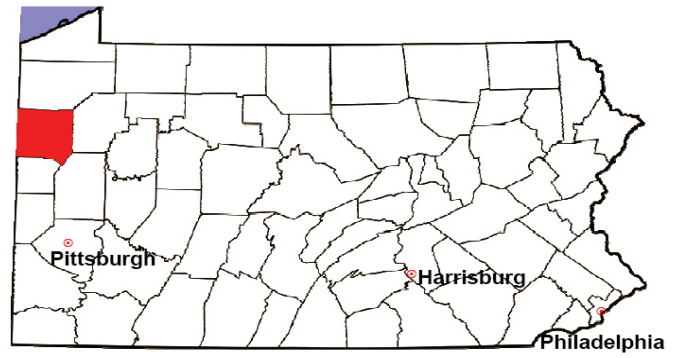
2008 Juvenile Dependency Abuse/Neglect	No. of Petitions	%
Cases Pending 1/1/08	0	
New Cases Filed in '08	45	
Cases Available for Processing	45	
Processed By:		
Judge	44	100.0%
Non-Judicial Officer	0	0.0%
Other	0	0.0%
Cases Processed	44	100.0%
Cases Pending 12/31/08	1	

Abuse/Neglect New Cases Filed, 2000-2008



MERCER COUNTY

2008 Population Estimate: 116,652
 Class of County: 5th
 No. of Common Pleas Court Judgeships: 4



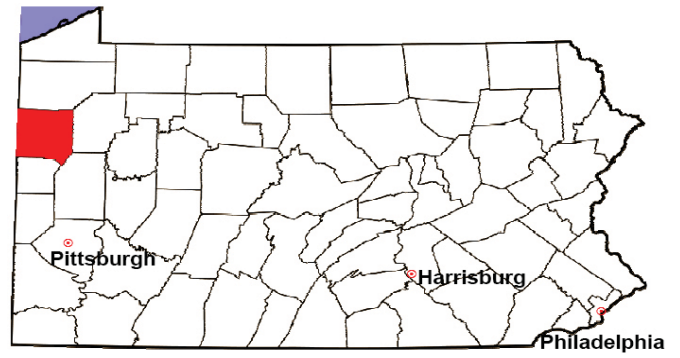
2008 Juvenile Dependency Status Offenses	No. of Petitions	%
Cases Pending 1/1/08	0	
New Cases Filed in '08	26	
Cases Available for Processing	26	
Processed By:		
Judge	26	100.0%
Non-Judicial Officer	0	0.0%
Other	0	0.0%
Cases Processed	26	100.0%
Cases Pending 12/31/08	0	

Status Offenses New Cases Filed, 2000-2008



MERCER COUNTY

2008 Population Estimate: 116,652
 Class of County: 5th
 No. of Common Pleas Court Judgeships: 4



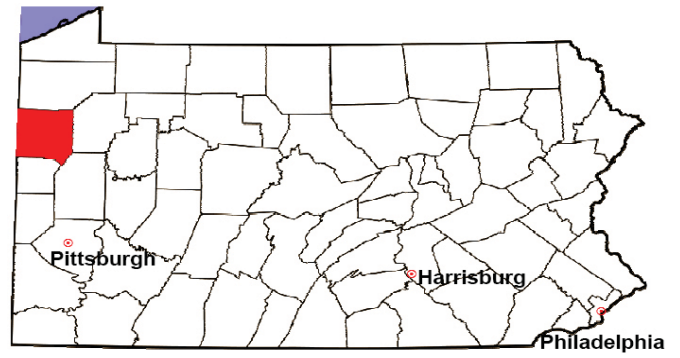
2008 Juvenile Delinquency	No. of Referrals	%
Cases Pending 1/1/08	181	
New Referrals in '08	517	
Cases Available for Processing	698	
Processed By:		
Judge	307	69.8%
Non-Judicial Officer	133	30.2%
Other	0	0.0%
Cases Processed	440	100.0%
Cases Pending 12/31/08	258	

Juvenile Delinquency New Referrals, 1998-2008



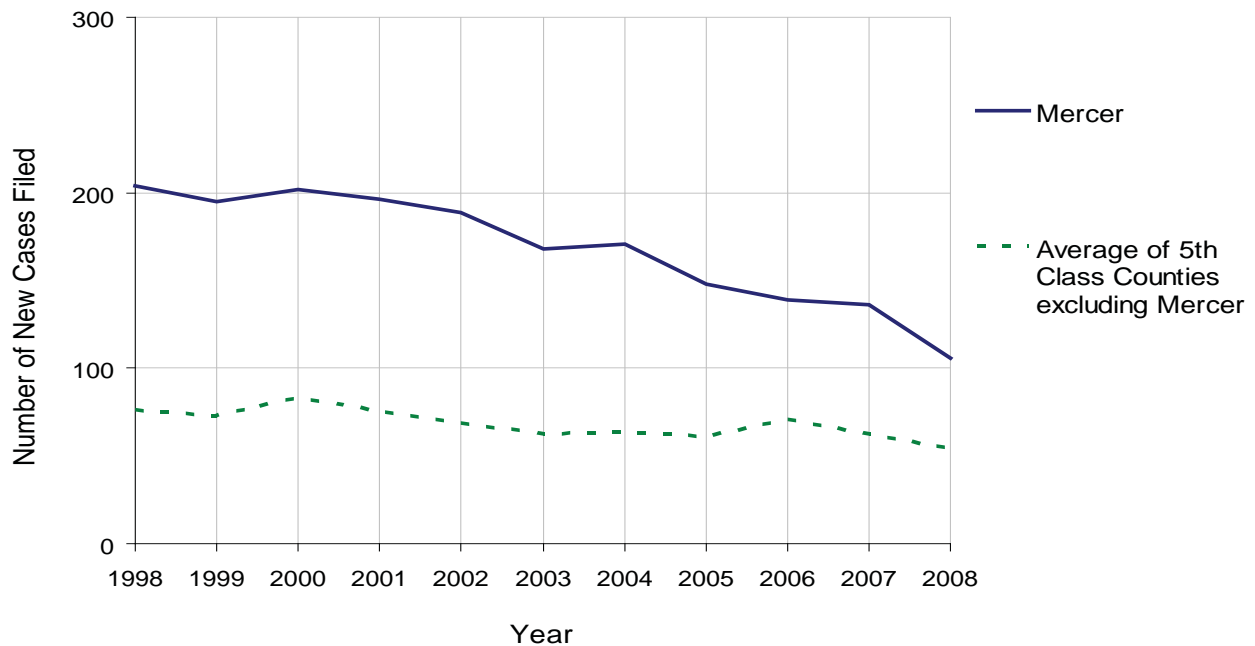
MERCER COUNTY

2008 Population Estimate: 116,652
 Class of County: 5th
 No. of Common Pleas Court Judgeships: 4



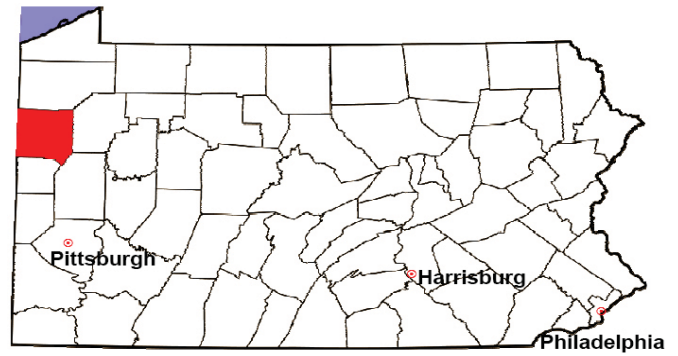
2008 Accounts	No. of Accounts	%
Cases Pending 1/1/08	51	
New Cases Filed in '08	106	
Cases Available for Processing	157	
Processed By:		
Contested before a Judge	0	0.0%
Contested before a Non-Judicial Officer	0	0.0%
Uncontested	117	100.0%
Other	0	0.0%
Cases Processed	117	100.0%
Cases Pending 12/31/08	40	

Accounts New Cases Filed, 1998-2008



MERCER COUNTY

2008 Population Estimate: 116,652
 Class of County: 5th
 No. of Common Pleas Court Judgeships: 4

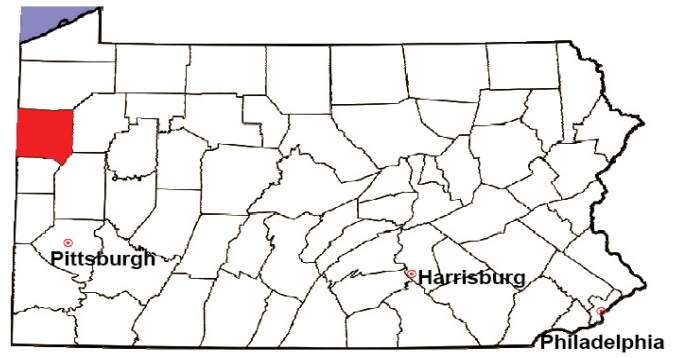


2008 Adoptions		No. of Cases	%
Cases Pending 1/1/08		7	
New Cases Filed in '08		30	
Cases Available for Processing		37	
Processed By:			
Contested before a Judge	Granted	2	8.3%
	Denied	0	0.0%
Uncontested	Granted	20	83.3%
	Denied	0	0.0%
Other		2	8.3%
Cases Processed		24	100.0%
Cases Pending 12/31/08		13	

Note: Prior to 2008, each petition was counted as one new case, regardless of the number of children listed on the petition. Starting in 2008, each child listed on a petition is counted as a separate case. Therefore, statistics for 2008 should not be compared with those for previous years.

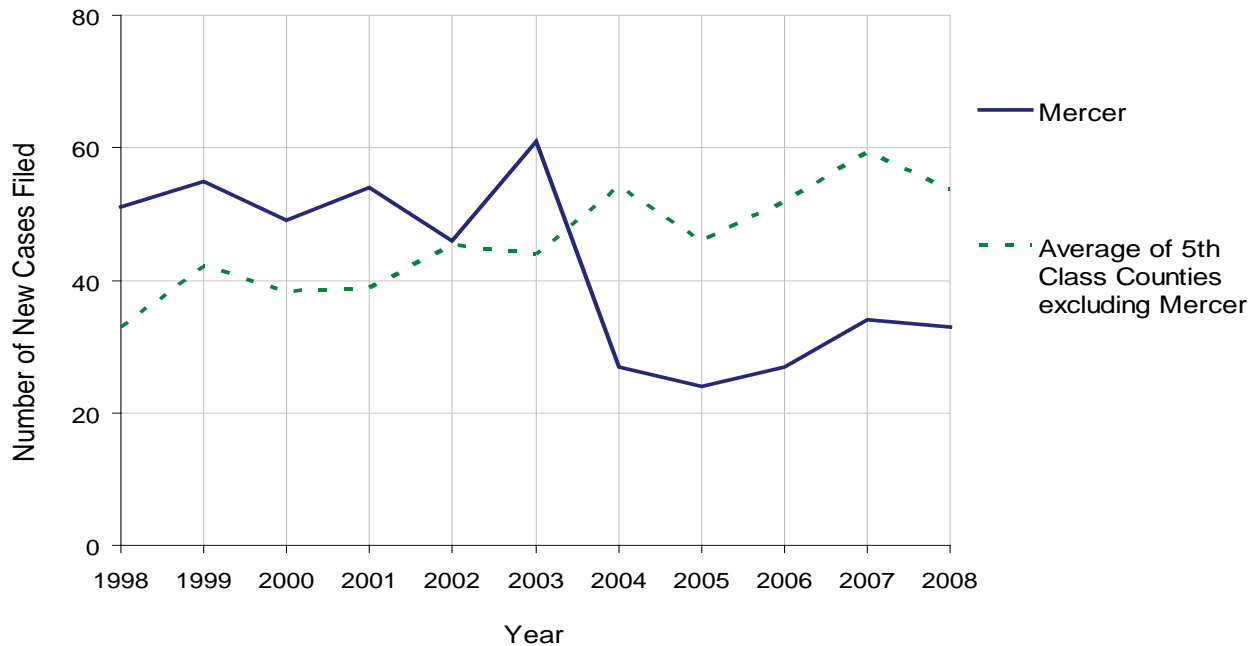
MERCER COUNTY

2008 Population Estimate: 116,652
 Class of County: 5th
 No. of Common Pleas Court Judgeships: 4



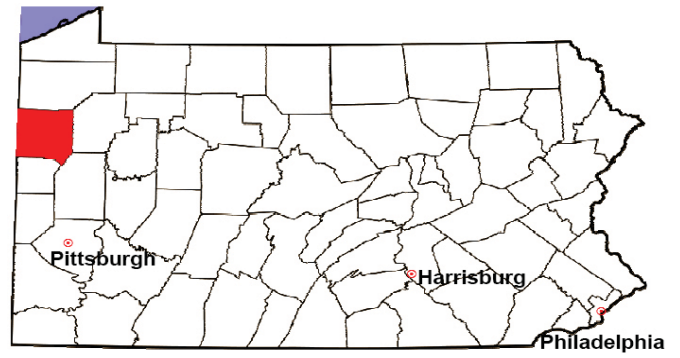
2008 Relinquishments/Terminations	No. of Petitions	%
Cases Pending 1/1/08	12	
New Cases Filed in '08	33	
Cases Available for Processing	45	
Processed By:		
Contested before a Judge	0	0.0%
Uncontested	32	97.0%
Other	1	3.0%
Cases Processed	33	100.0%
Cases Pending 12/31/08	12	

Relinquishments/Terminations New Cases Filed, 1998-2008



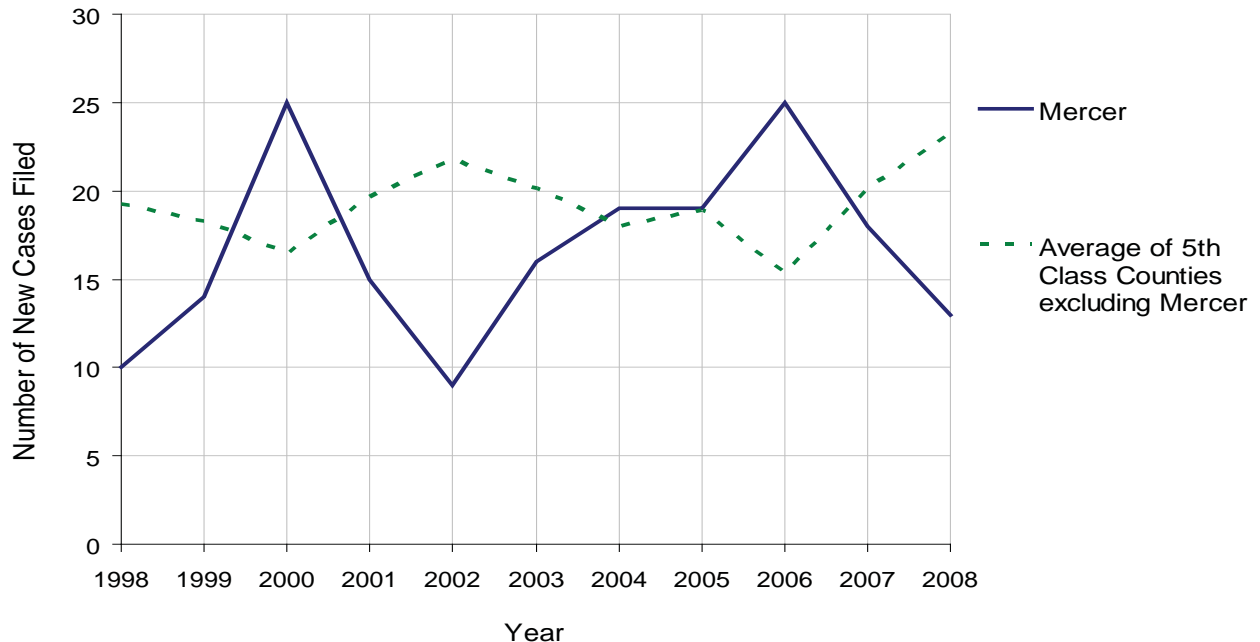
MERCER COUNTY

2008 Population Estimate: 116,652
 Class of County: 5th
 No. of Common Pleas Court Judgeships: 4



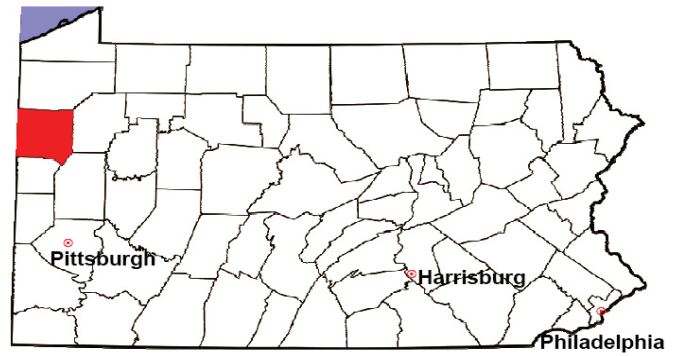
2008 Appointment of Guardians	No. of Petitions	%
Cases Pending 1/1/08	9	
New Cases Filed in '08	13	
Cases Available for Processing	22	
Processed By:		
Contested before a Judge	0	0.0%
Uncontested	12	100.0%
Other	0	0.0%
Cases Processed	12	100.0%
Cases Pending 12/31/08	10	

Appointment of Guardians New Cases Filed, 1998-2008



MERCER COUNTY

2008 Population Estimate: 116,652
 Class of County: 5th
 No. of Common Pleas Court Judgeships: 4



2008 Jury Activity & Performance Measures		
A. Juror Days		3,247
B. Number Sent to Voir Dire		1,520
	Voir Dire Attendance Rate $(B/A * 100)$	46.8%
C. Number of Voir Dires Started		23
	Juror Days Per Voir Dire Starts (A/C)	141
D. Number of Jurors Selected		308
	Juror Selection Rate $(D/B * 100)$	20.3%
E. Number of Jury Trials Started		22
	Juror Days Per Trial Starts (A/E)	148
	Number of Voir Dires Not Resulting in Trial $(C-E)$	1
	Percent Voir Dires Not Resulting in Trial $(C-E)/C * 100$	4.3%
F. Pool Days		36
G. Zero Panel Days		19
	Percent Zero Panel Days $(G/F * 100)$	52.8%
H. Total Juror Fees Incurred		\$51,824
	Average Juror Fees Per Trial (H/E)	\$2,356

Average Juror Fees Per Trial, 1998-2008

