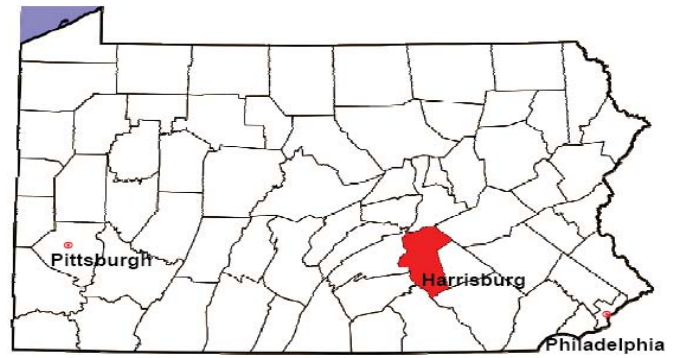


DAUPHIN COUNTY

2008 Population Estimate: 256,562

Class of County: 3rd

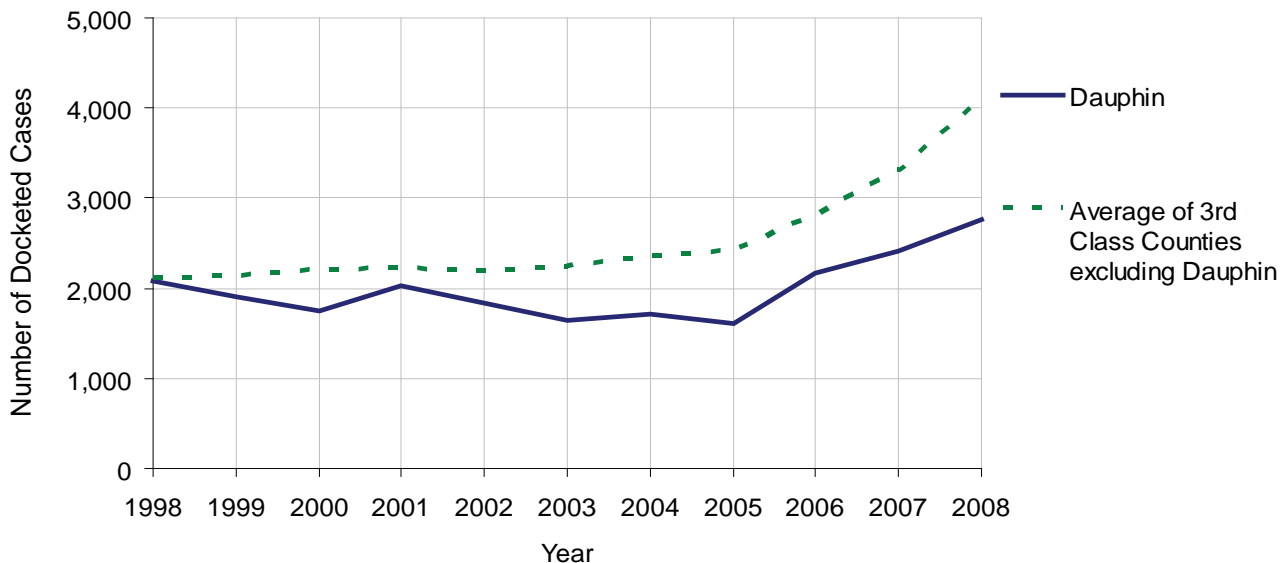
No. of Common Pleas Court Judgeships: 8



2008 Civil		Civil Action		
Docketed Cases		2,766		
Arbitrated Cases		122		
Trial-Ready Cases:		Civil Action	Other	Total
Cases Pending 1/1/08		46	4	50
Became Trial Ready in '08		107	9	116
Restored to Trial List		7	0	7
Appeals from Arbitration		10	0	10
Cases Available for Trial		170	13	183
Disposed By:				
Settlement		45	3	48
Non-Jury Trial		20	4	24
Jury Trial		18	0	18
Stricken from Trial List		29	0	29
Other		18	4	22
Cases Disposed		130	11	141
Cases Pending 12/31/08		40	2	42

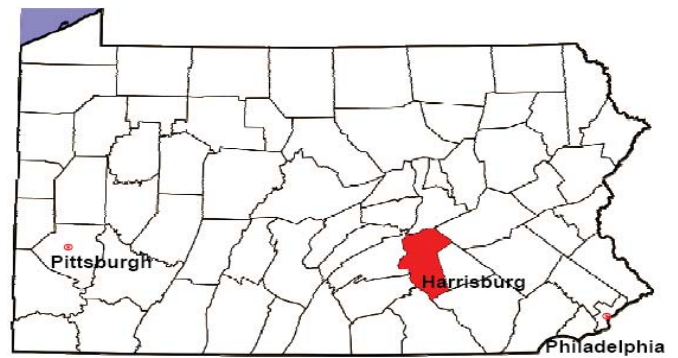
Age of Trial-Ready Cases as of 12/31/08 (Civil Action Only)		
0-6 months	36	90%
7-12 months	3	8%
13-18 months	1	3%
19-24 months	0	0%
25-30 months	0	0%
31-36 months	0	0%
Over 36 months	0	0%
Total	40	100%

Docketed Cases, 1998-2008



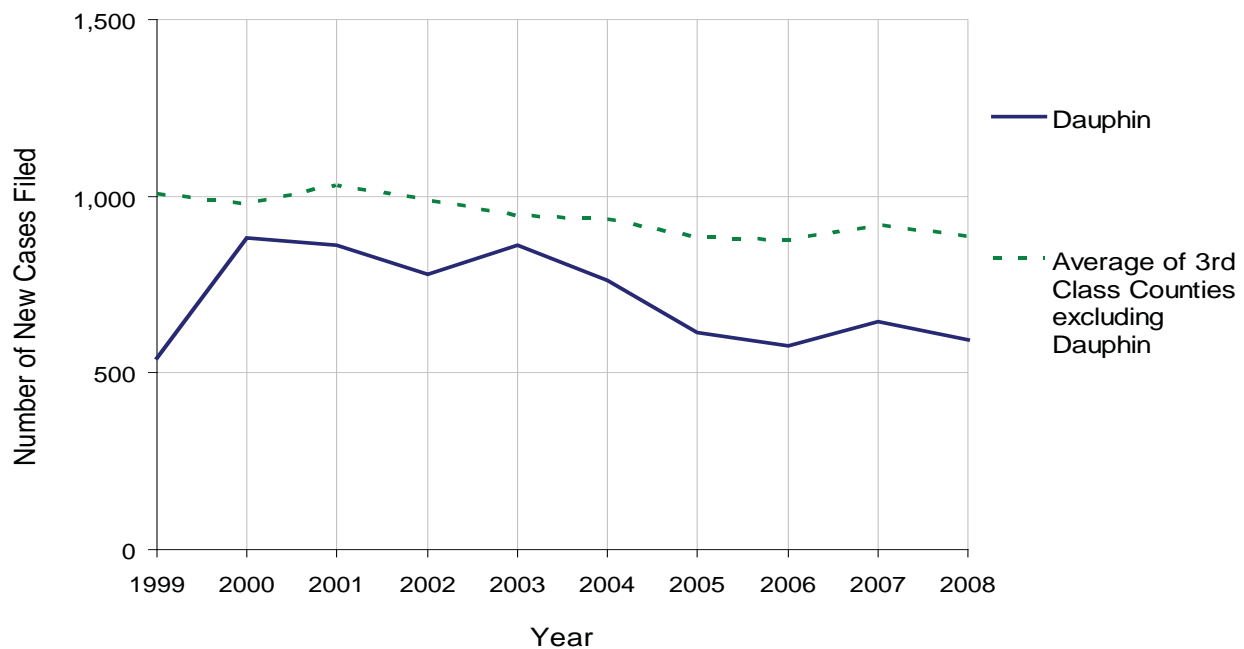
DAUPHIN COUNTY

2008 Population Estimate: 256,562
 Class of County: 3rd
 No. of Common Pleas Court Judgeships: 8



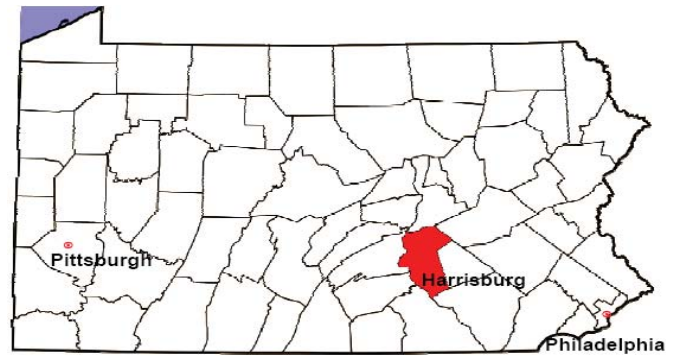
2008 Protection From Abuse	No. of Petitions	%
Cases Pending 1/1/08	18	
New Cases Filed in '08	593	
Cases Available for Processing	611	
Processed By:		
Final Order After Hearing	142	23.6%
Final Order by Stipulation or Agreement	187	31.1%
Dismissal	156	26.0%
Withdrawal	108	18.0%
Other	8	1.3%
Cases Processed	601	100.0%
Cases Pending 12/31/08	10	

PFA New Cases Filed, 1999-2008



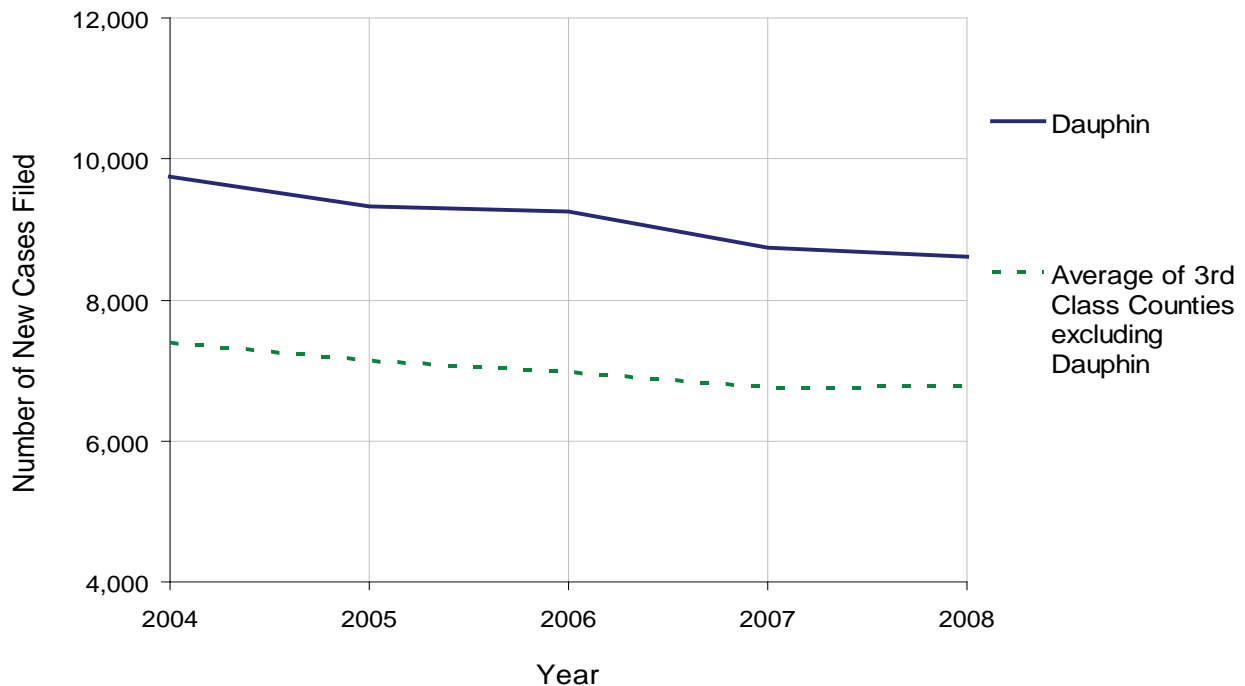
DAUPHIN COUNTY

2008 Population Estimate: 256,562
 Class of County: 3rd
 No. of Common Pleas Court Judgeships: 8



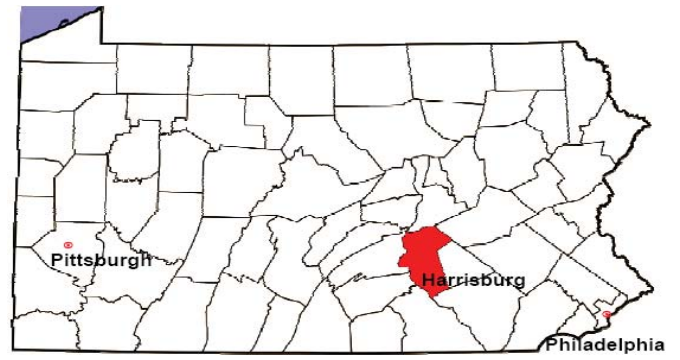
2008 Spousal & Child Support	No. of Petitions	%
Cases Pending 1/1/08	3,174	
New Cases Filed in '08	8,609	
Dockets Transferred In (+)	61	
Dockets Transferred Out (-)	87	
Cases Available for Processing	11,757	
Processed By:		
Judge	346	3.9%
Intake Officer	8,562	96.1%
Hearing Officer	0	0.0%
Other	1	0.0%
Cases Processed	8,909	100.0%
Cases Pending 12/31/08	2,848	

Spousal & Child Support New Cases Filed, 1998-2008



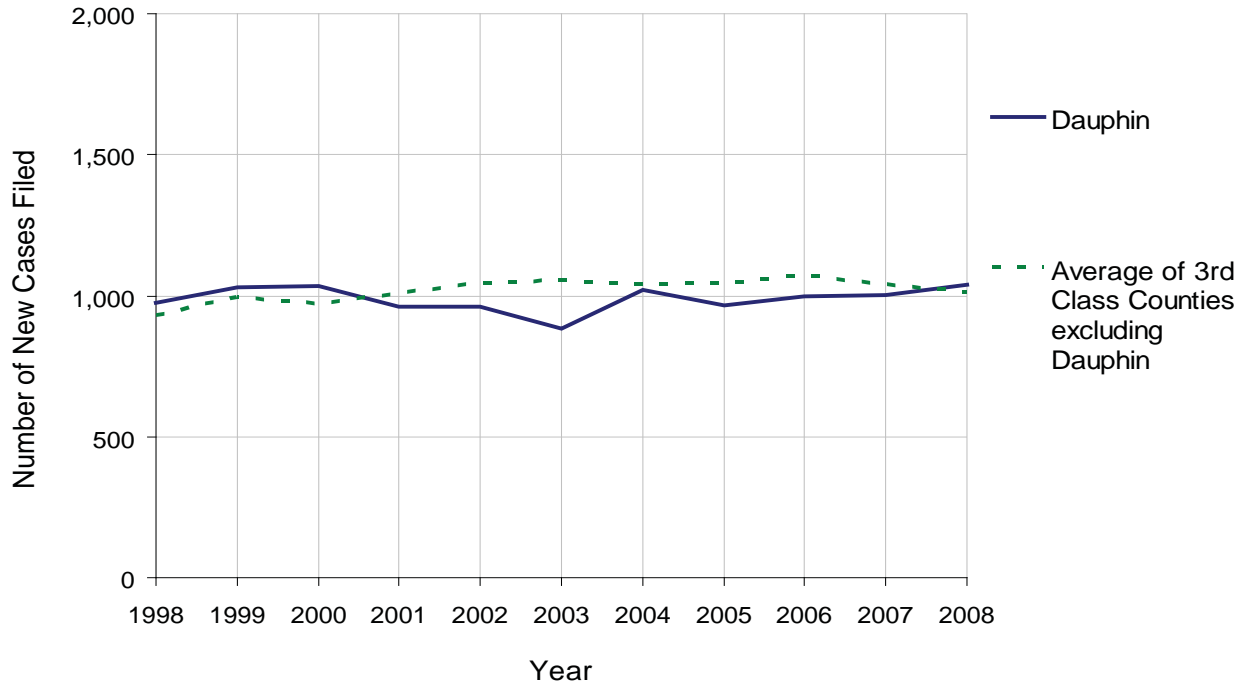
DAUPHIN COUNTY

2008 Population Estimate: 256,562
 Class of County: 3rd
 No. of Common Pleas Court Judgeships: 8



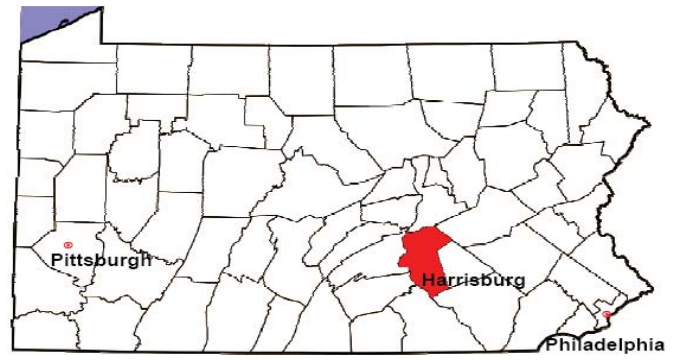
2008 Custody/Partial Custody/Visitation	No. of Petitions	%
Cases Pending 1/1/08	206	
New Cases Filed in '08	1,039	
Cases Available for Processing	1,245	
Processed By:		
Judge	231	22.4%
Non-Judicial Officer	656	63.6%
Other	144	14.0%
Cases Processed	1,031	100.0%
Cases Pending 12/31/08	214	

Custody/Partial Custody/Visitation New Cases Filed
 1998-2008



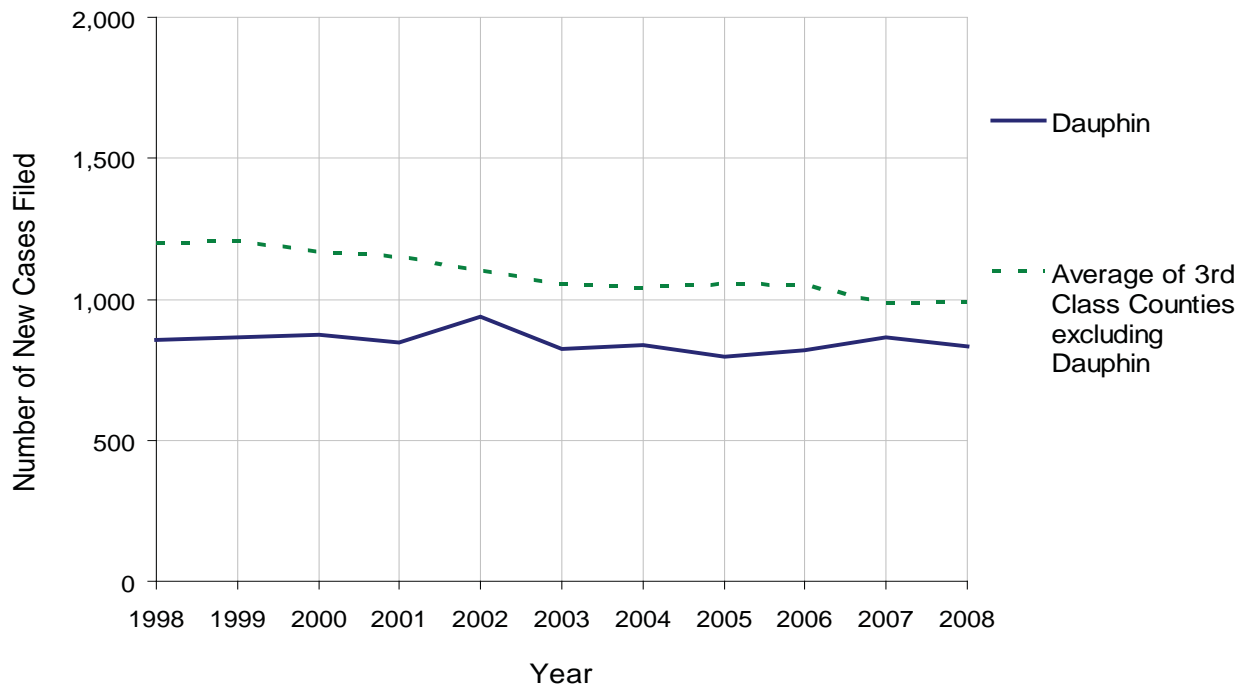
DAUPHIN COUNTY

2008 Population Estimate: 256,562
 Class of County: 3rd
 No. of Common Pleas Court Judgeships: 8



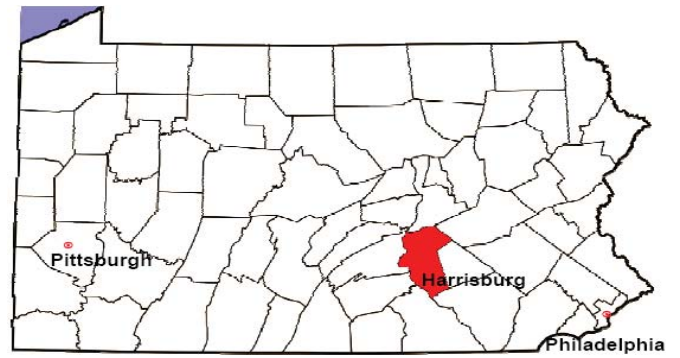
2008 Divorce	No. of Petitions	%
Cases Pending 1/1/08	1,350	
New Cases Filed in '08	833	
Cases Available for Processing	2,183	
Processed By:		
Contested Before a Judge	1	0.1%
Contested Before a Master	9	1.0%
Uncontested	751	85.5%
Other	117	13.3%
Cases Processed	878	100.0%
Cases Pending 12/31/08	1,305	

Divorce New Cases Filed, 1998-2008



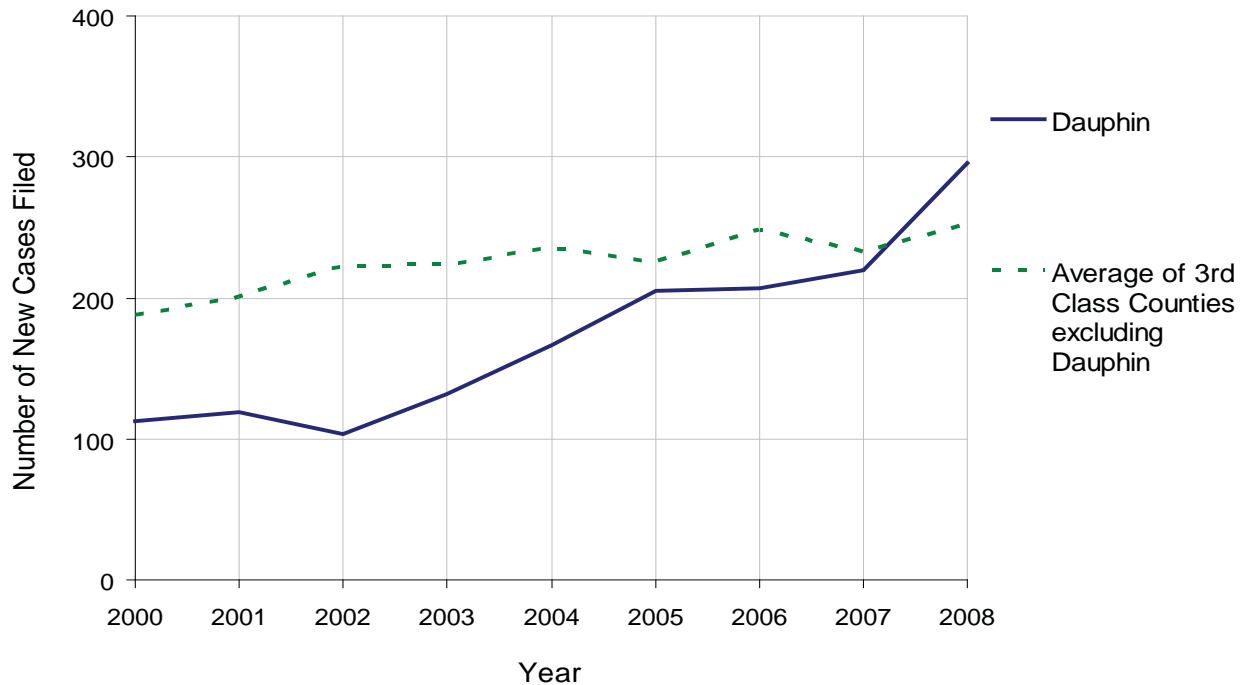
DAUPHIN COUNTY

2008 Population Estimate: 256,562
 Class of County: 3rd
 No. of Common Pleas Court Judgeships: 8



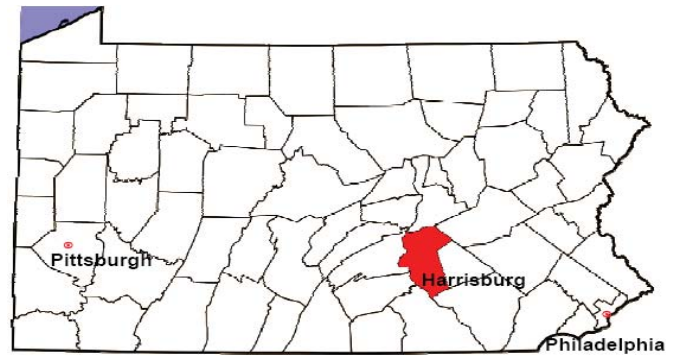
2008 Juvenile Dependency Abuse/Neglect	No. of Petitions	%
Cases Pending 1/1/08	6	
New Cases Filed in '08	296	
Cases Available for Processing	302	
Processed By:		
Judge	0	0.0%
Non-Judicial Officer	298	100.0%
Other	0	0.0%
Cases Processed	298	100.0%
Cases Pending 12/31/08	4	

Abuse/Neglect New Cases Filed, 2000-2008



DAUPHIN COUNTY

2008 Population Estimate: 256,562
Class of County: 3rd
No. of Common Pleas Court Judgeships: 8



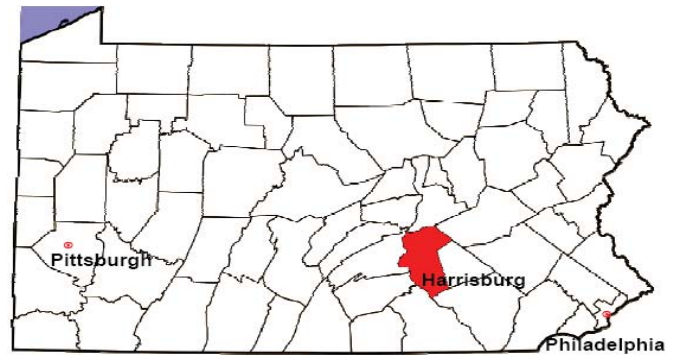
2008 Juvenile Dependency Status Offenses

Not Applicable:

In some counties, status offense petitions are not filed.

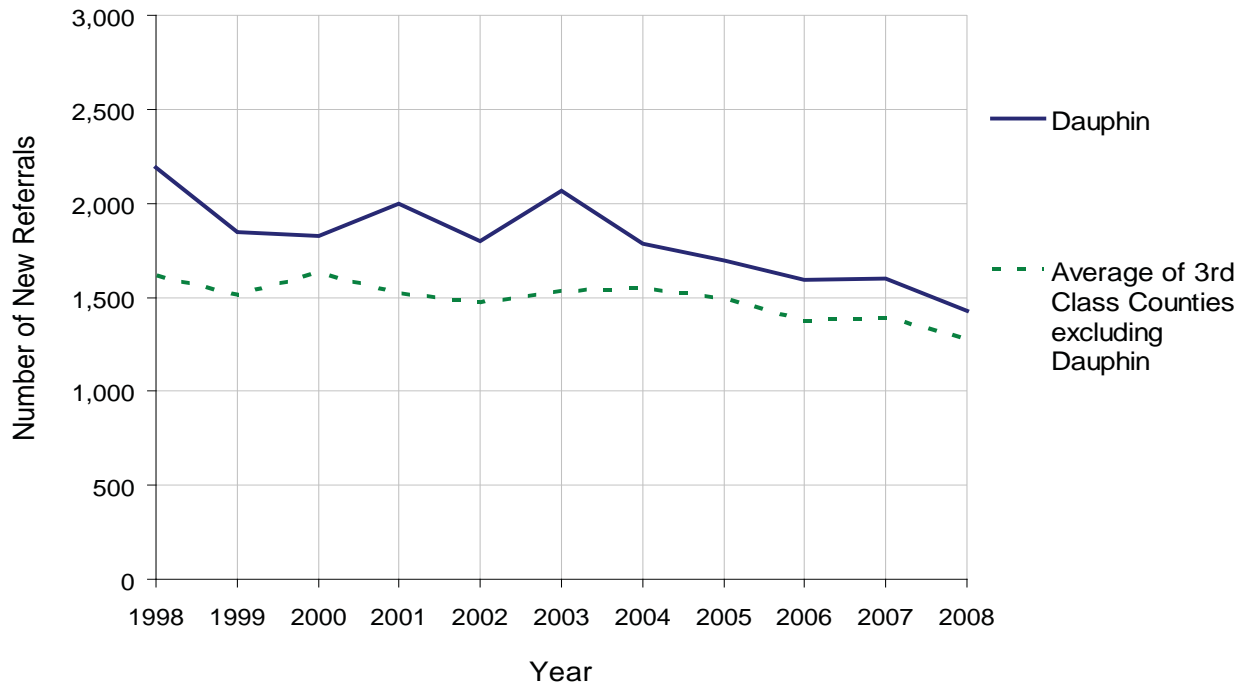
DAUPHIN COUNTY

2008 Population Estimate: 256,562
 Class of County: 3rd
 No. of Common Pleas Court Judgeships: 8



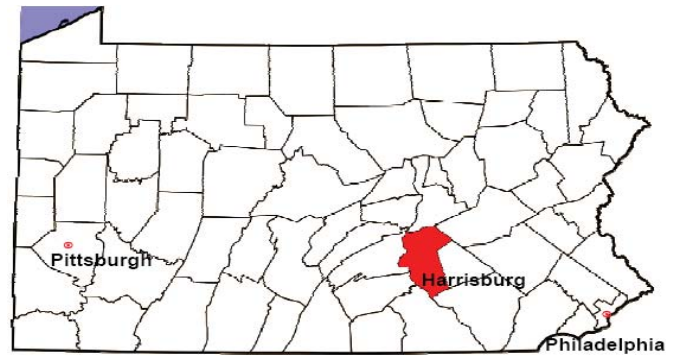
2008 Juvenile Delinquency	No. of Referrals	%
Cases Pending 1/1/08	1,113	
New Referrals in '08	1,431	
Cases Available for Processing	2,544	
Processed By:		
Judge	958	65.3%
Non-Judicial Officer	437	29.8%
Other	73	5.0%
Cases Processed	1,468	100.0%
Cases Pending 12/31/08	1,076	

Juvenile Delinquency New Referrals, 1998-2008



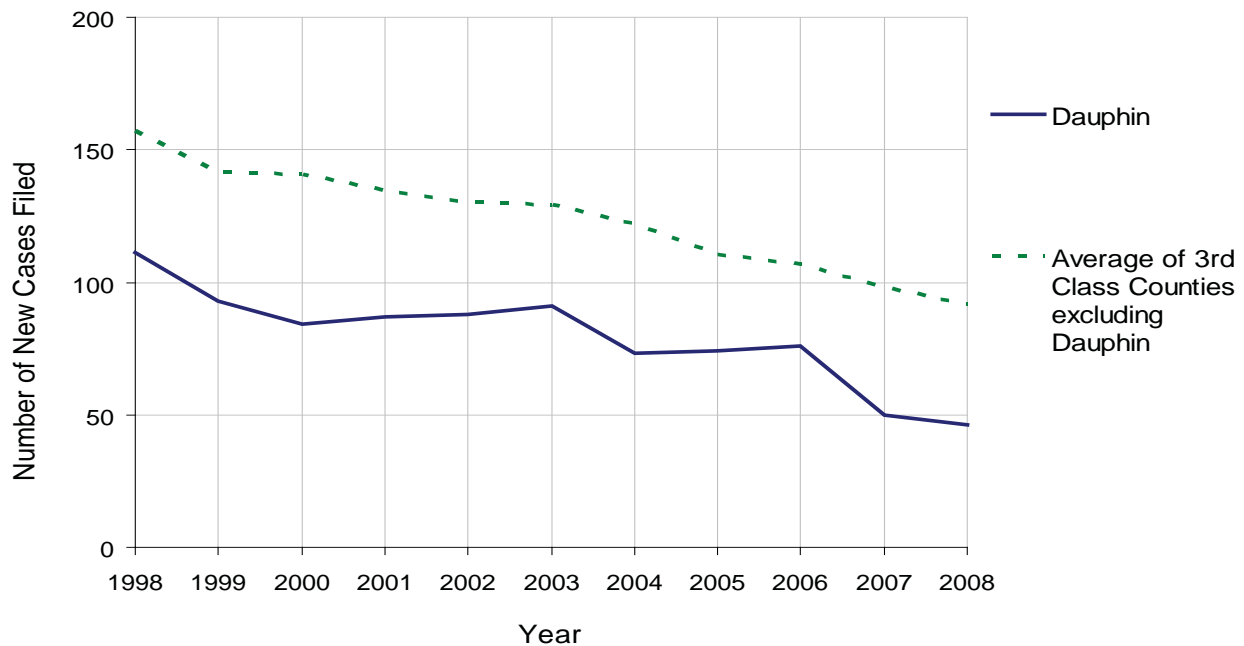
DAUPHIN COUNTY

2008 Population Estimate: 256,562
 Class of County: 3rd
 No. of Common Pleas Court Judgeships: 8



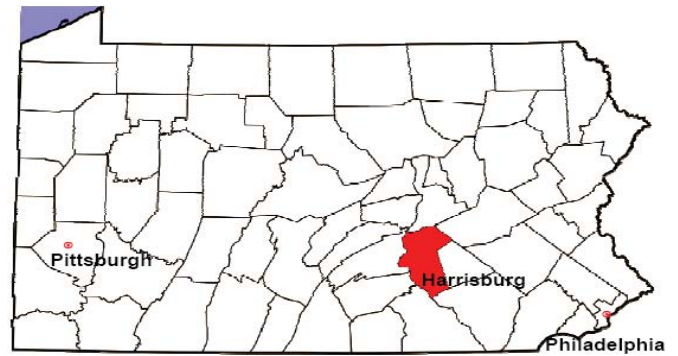
2008 Accounts	No. of Accounts	%
Cases Pending 1/1/08	20	
New Cases Filed in '08	46	
Cases Available for Processing	66	
Processed By:		
Contested before a Judge	0	0.0%
Contested before a Non-Judicial Officer	0	0.0%
Uncontested	35	92.1%
Other	3	7.9%
Cases Processed	38	100.0%
Cases Pending 12/31/08	28	

Accounts New Cases Filed, 1998-2008



DAUPHIN COUNTY

2008 Population Estimate: 256,562
 Class of County: 3rd
 No. of Common Pleas Court Judgeships: 8

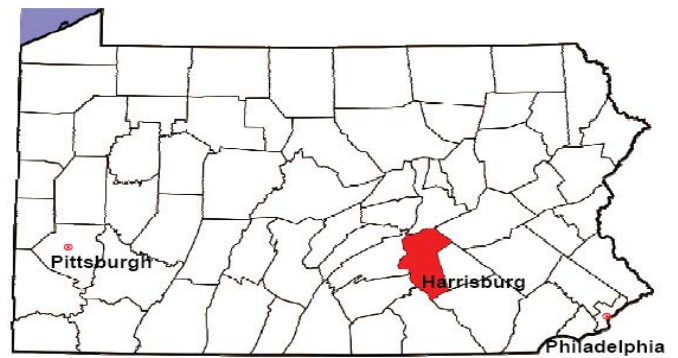


2008 Adoptions		No. of Cases	%
Cases Pending 1/1/08		21	
New Cases Filed in '08		137	
Cases Available for Processing		158	
Processed By:			
Contested before a Judge	Granted	0	0.0%
	Denied	0	0.0%
Uncontested	Granted	133	97.8%
	Denied	3	2.2%
Other		0	0.0%
Cases Processed		136	100.0%
Cases Pending 12/31/08		22	

Note: Prior to 2008, each petition was counted as one new case, regardless of the number of children listed on the petition. Starting in 2008, each child listed on a petition is counted as a separate case. Therefore, statistics for 2008 should not be compared with those for previous years.

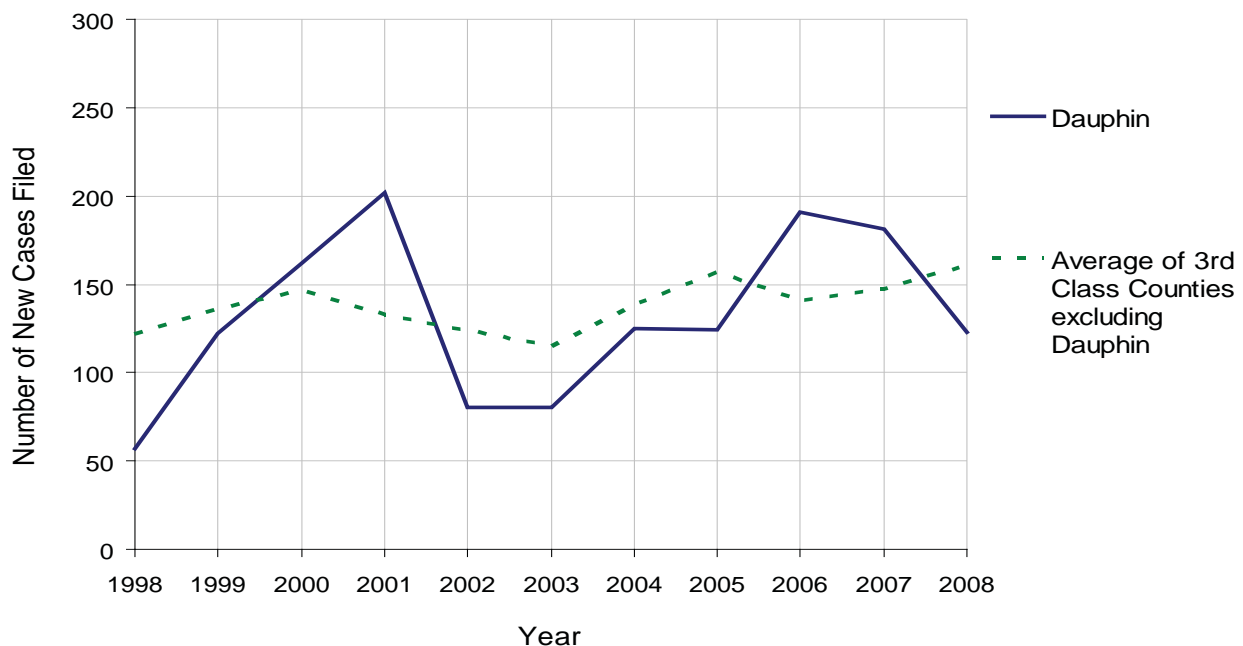
DAUPHIN COUNTY

2008 Population Estimate: 256,562
 Class of County: 3rd
 No. of Common Pleas Court Judgeships: 8



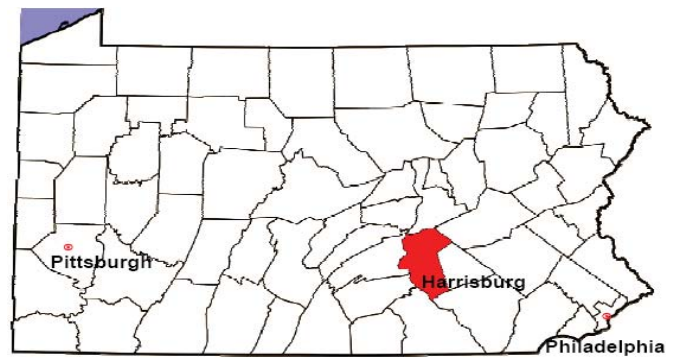
2008 Relinquishments/Terminations	No. of Petitions	%
Cases Pending 1/1/08	35	
New Cases Filed in '08	123	
Cases Available for Processing	158	
Processed By:		
Contested before a Judge	32	27.4%
Uncontested	84	71.8%
Other	1	0.9%
Cases Processed	117	100.0%
Cases Pending 12/31/08	41	

Relinquishments/Terminations New Cases Filed, 1998-2008



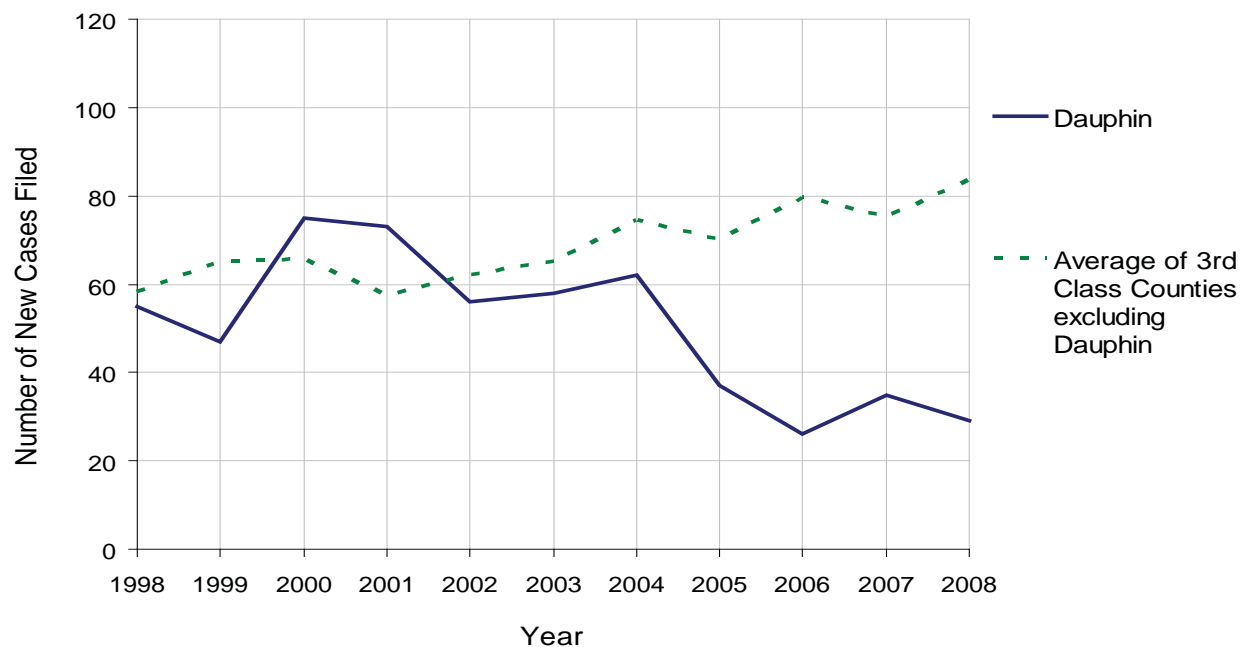
DAUPHIN COUNTY

2008 Population Estimate: 256,562
 Class of County: 3rd
 No. of Common Pleas Court Judgeships: 8



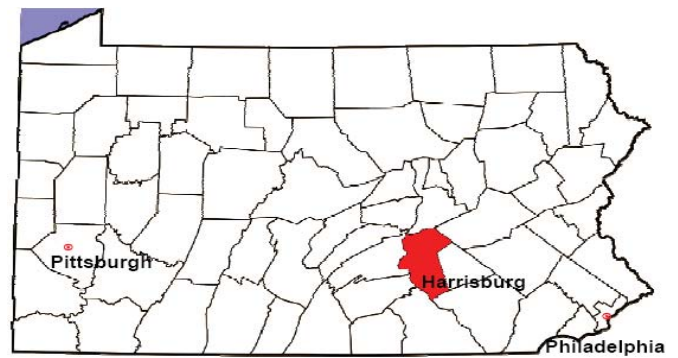
2008 Appointment of Guardians	No. of Petitions	%
Cases Pending 1/1/08	6	
New Cases Filed in '08	29	
Cases Available for Processing	35	
Processed By:		
Contested before a Judge	0	0.0%
Uncontested	21	91.3%
Other	2	8.7%
Cases Processed	23	100.0%
Cases Pending 12/31/08	12	

Appointment of Guardians New Cases Filed, 1998-2008



DAUPHIN COUNTY

2008 Population Estimate: 256,562
 Class of County: 3rd
 No. of Common Pleas Court Judgeships: 8



2008 Jury Activity & Performance Measures		
A. Juror Days	5,282	
B. Number Sent to Voir Dire	3,779	
Voir Dire Attendance Rate $(B/A * 100)$		71.5%
C. Number of Voir Dires Started	107	
Juror Days Per Voir Dire Starts (A/C)		49
D. Number of Jurors Selected	1,482	
Juror Selection Rate $(D/B * 100)$		39.2%
E. Number of Jury Trials Started	106	
Juror Days Per Trial Starts (A/E)		50
Number of Voir Dires Not Resulting in Trial $(C-E)$		1
Percent Voir Dires Not Resulting in Trial $(C-E)/C * 100$		0.9%
F. Pool Days	49	
G. Zero Panel Days	4	
Percent Zero Panel Days $(G/F * 100)$		8.2%
H. Total Juror Fees Incurred	\$141,113	
Average Juror Fees Per Trial (H/E)		\$1,331

Average Juror Fees Per Trial, 1998-2008

