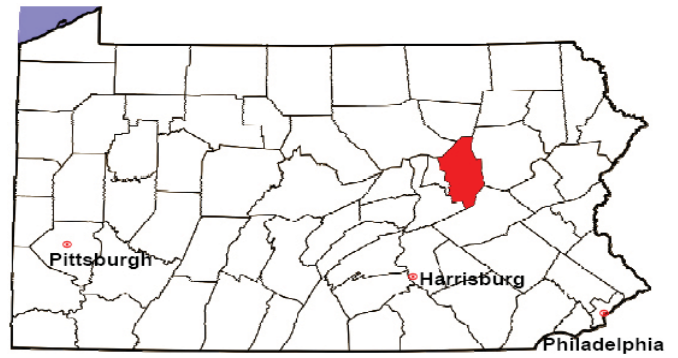


COLUMBIA COUNTY

2008 Population Estimate: 65,004

Class of County: 6th

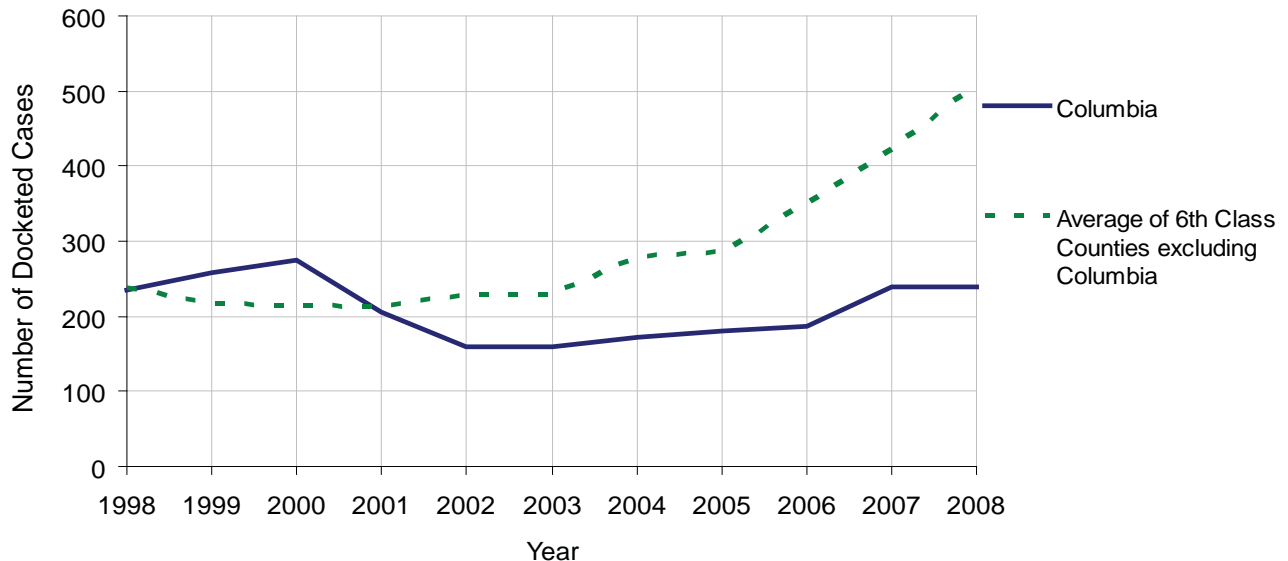
No. of Common Pleas Court Judgeships: 2
(Columbia and Montour combined)



2008 Civil		Civil Action		
Docketed Cases		240		
Arbitrated Cases		11		
Trial-Ready Cases:		Civil Action	Other	Total
Cases Pending 1/1/08		22	0	22
Became Trial Ready in '08		36	0	36
Restored to Trial List		0	0	0
Appeals from Arbitration		5	0	5
Cases Available for Trial		63	0	63
Disposed By:				
Settlement		22	0	22
Non-Jury Trial		10	0	10
Jury Trial		4	0	4
Stricken from Trial List		8	0	8
Other		0	0	0
Cases Disposed		44	0	44
Cases Pending 12/31/08		19	0	19

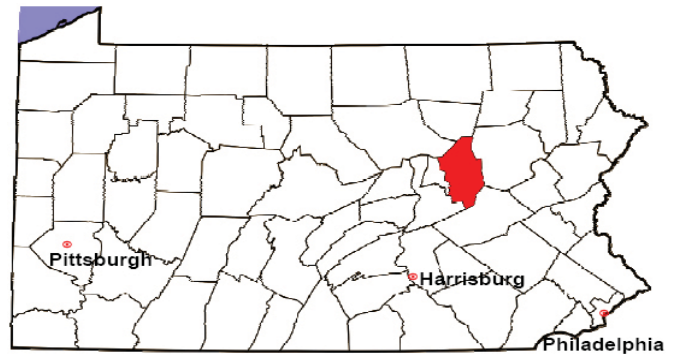
Age of Trial-Ready Cases as of 12/31/08 (Civil Action Only)		
0-6 months	13	68%
7-12 months	5	26%
13-18 months	1	5%
19-24 months	0	0%
25-30 months	0	0%
31-36 months	0	0%
Over 36 months	0	0%
Total	19	100%

Docketed Cases, 1998-2008



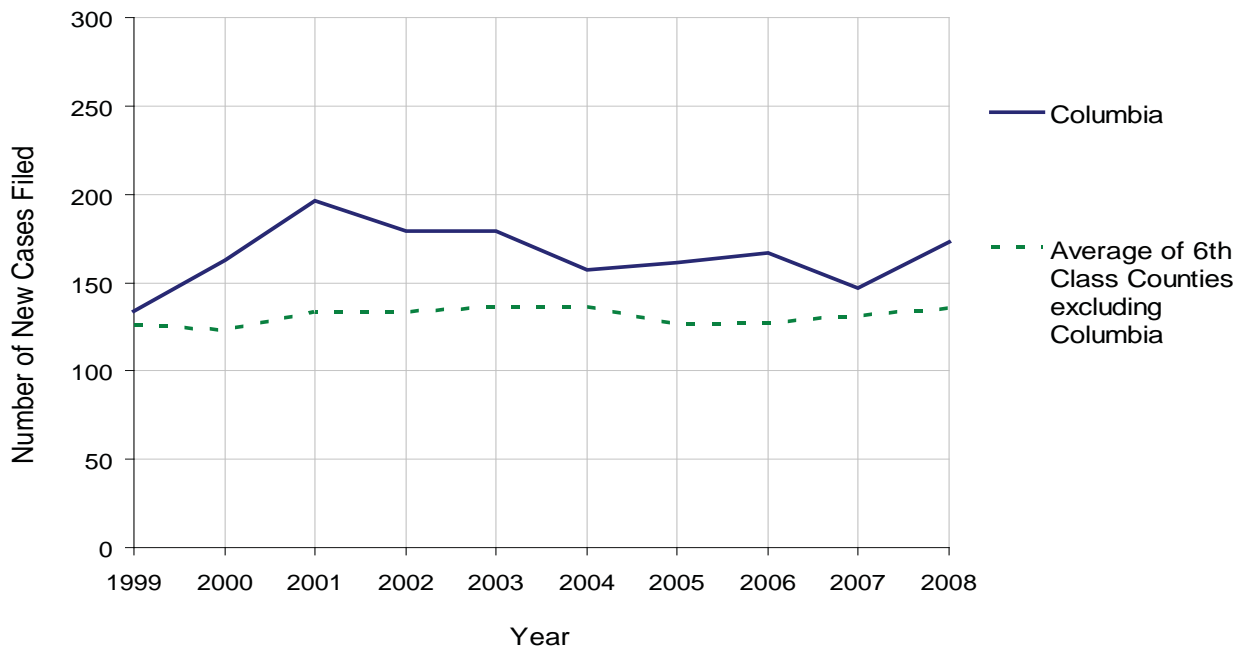
COLUMBIA COUNTY

2008 Population Estimate: 65,004
 Class of County: 6th
 No. of Common Pleas Court Judgeships: 2
 (Columbia and Montour combined)



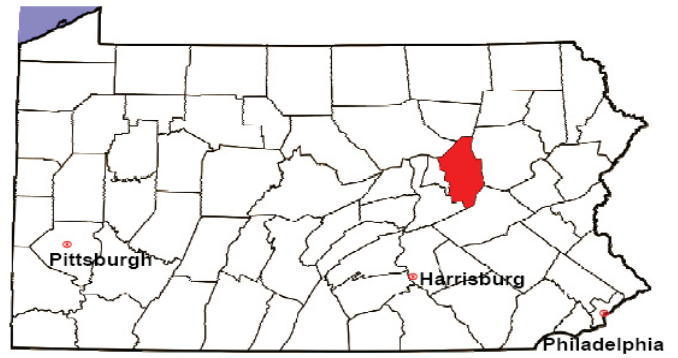
2008 Protection From Abuse	No. of Petitions	%
Cases Pending 1/1/08	2	
New Cases Filed in '08	173	
Cases Available for Processing	175	
Processed By:		
Final Order After Hearing	62	37.3%
Final Order by Stipulation or Agreement	33	19.9%
Dismissal	16	9.6%
Withdrawal	55	33.1%
Other	0	0.0%
Cases Processed	166	100.0%
Cases Pending 12/31/08	9	

PFA New Cases Filed, 1999-2008



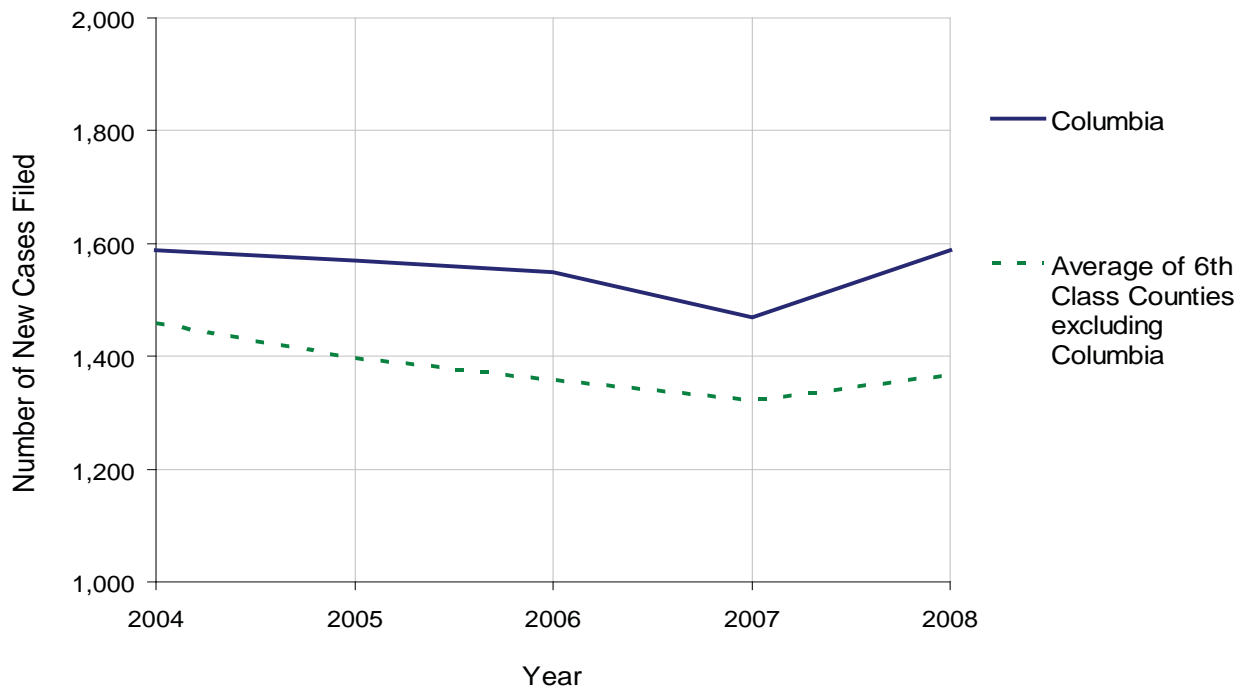
COLUMBIA COUNTY

2008 Population Estimate: 65,004
 Class of County: 6th
 No. of Common Pleas Court Judgeships: 2
 (Columbia and Montour combined)



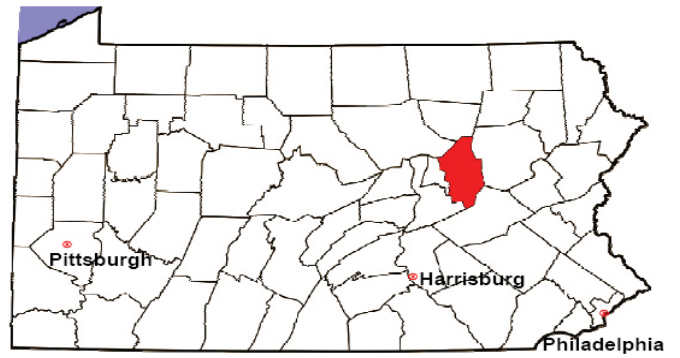
2008 Spousal & Child Support	No. of Petitions	%
Cases Pending 1/1/08	236	
New Cases Filed in '08	1,589	
Dockets Transferred In (+)	12	
Dockets Transferred Out (-)	17	
Cases Available for Processing	1,820	
Processed By:		
Judge	24	1.5%
Intake Officer	1,455	92.8%
Hearing Officer	89	5.7%
Other	0	0.0%
Cases Processed	1,568	100.0%
Cases Pending 12/31/08	252	

Spousal & Child Support New Cases Filed, 1998-2008



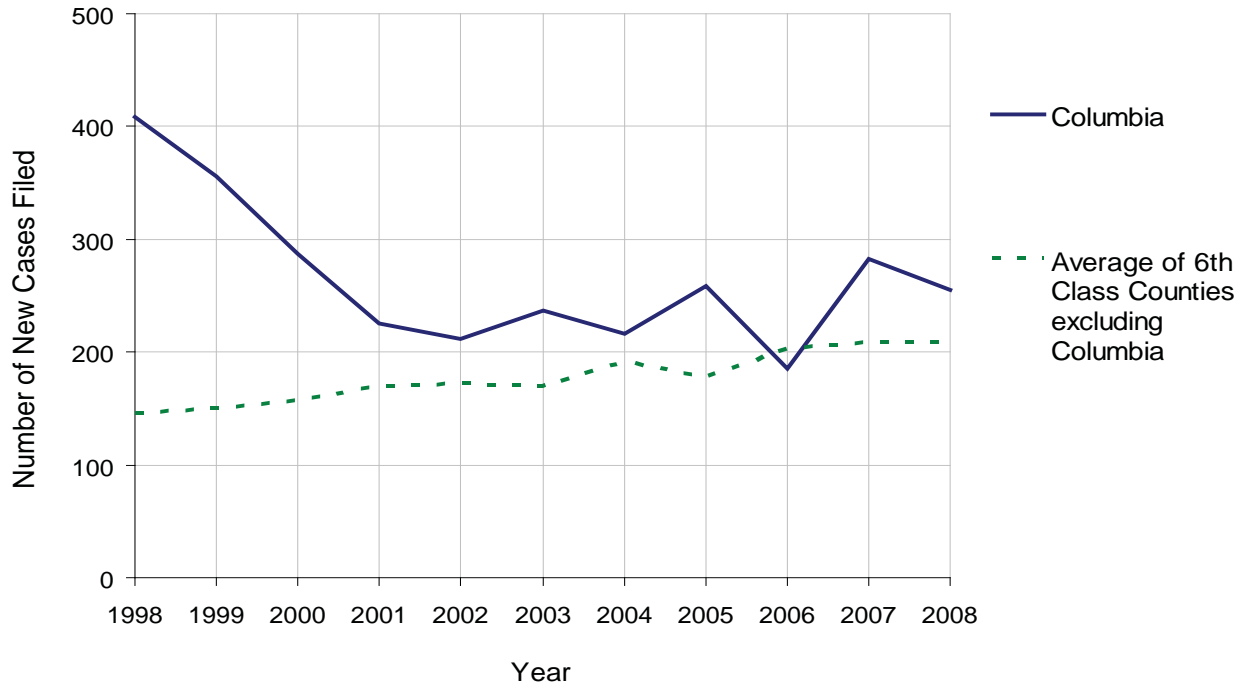
COLUMBIA COUNTY

2008 Population Estimate: 65,004
 Class of County: 6th
 No. of Common Pleas Court Judgeships: 2
 (Columbia and Montour combined)



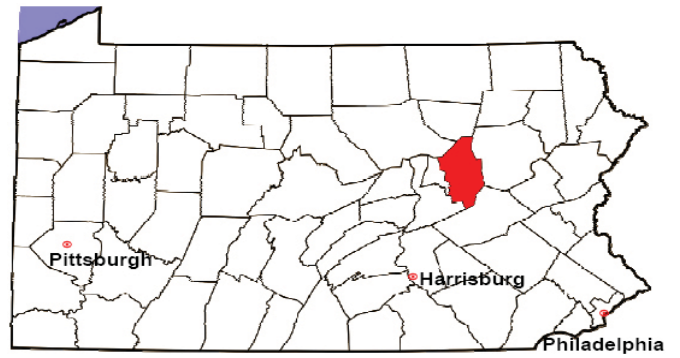
2008 Custody/Partial Custody/Visitation	No. of Petitions	%
Cases Pending 1/1/08	236	
New Cases Filed in '08	255	
Cases Available for Processing	491	
Processed By:		
Judge	1	0.5%
Non-Judicial Officer	184	91.5%
Other	16	8.0%
Cases Processed	201	100.0%
Cases Pending 12/31/08	290	

Custody/Partial Custody/Visitation New Cases Filed
 1998-2008



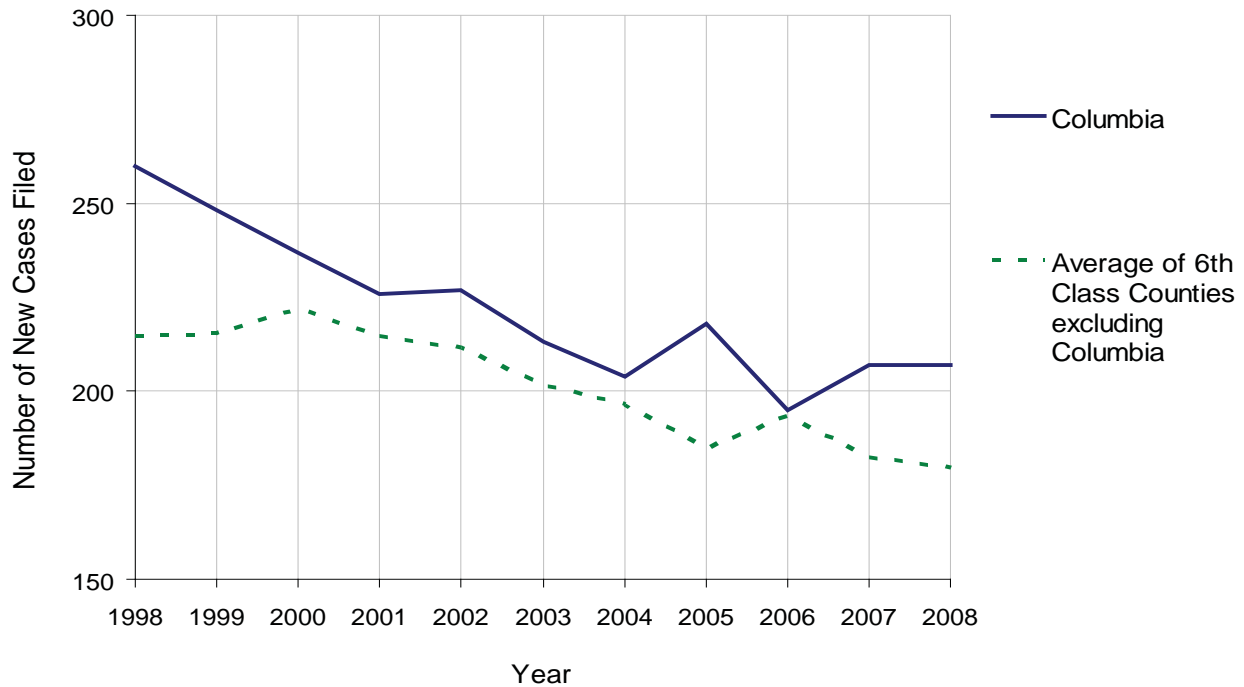
COLUMBIA COUNTY

2008 Population Estimate: 65,004
 Class of County: 6th
 No. of Common Pleas Court Judgeships: 2
 (Columbia and Montour combined)



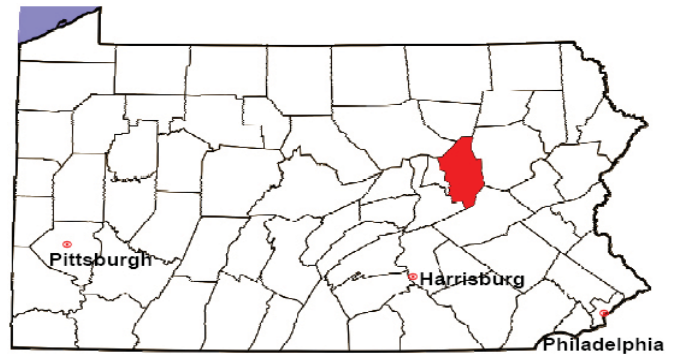
2008 Divorce	No. of Petitions	%
Cases Pending 1/1/08	408	
New Cases Filed in '08	207	
Cases Available for Processing	615	
Processed By:		
Contested Before a Judge	4	2.1%
Contested Before a Master	17	8.9%
Uncontested	165	86.4%
Other	5	2.6%
Cases Processed	191	100.0%
Cases Pending 12/31/08	424	

Divorce New Cases Filed, 1998-2008



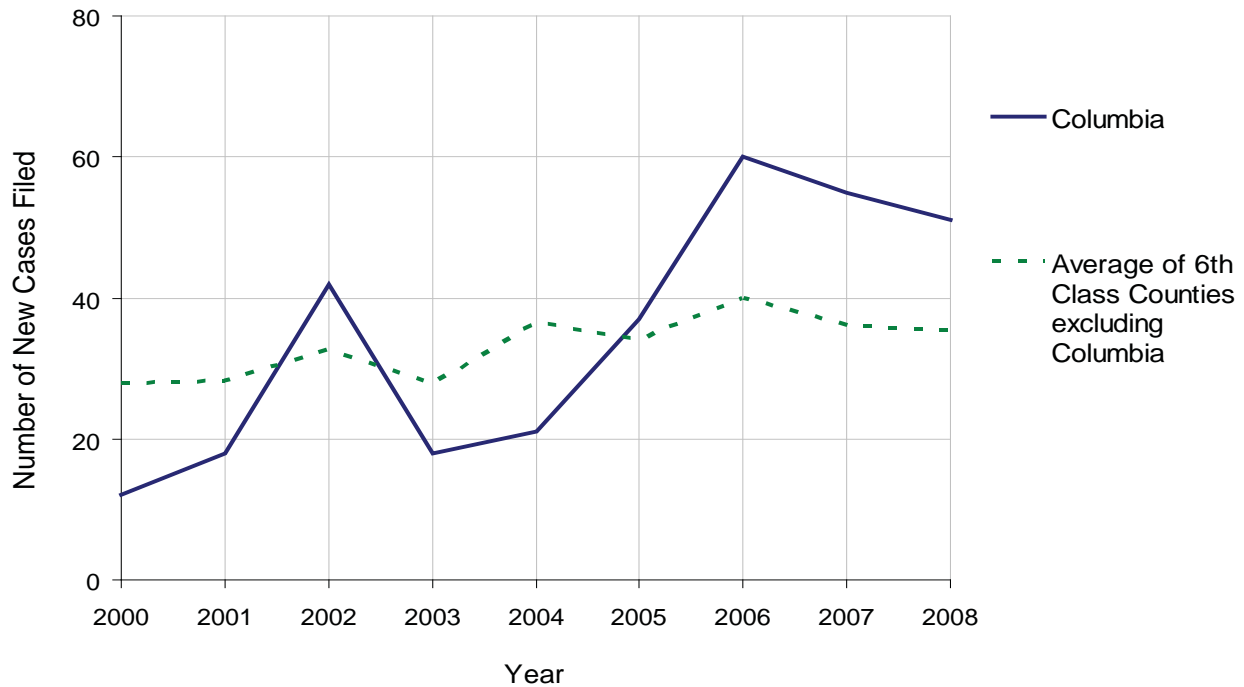
COLUMBIA COUNTY

2008 Population Estimate: 65,004
 Class of County: 6th
 No. of Common Pleas Court Judgeships: 2
 (Columbia and Montour combined)



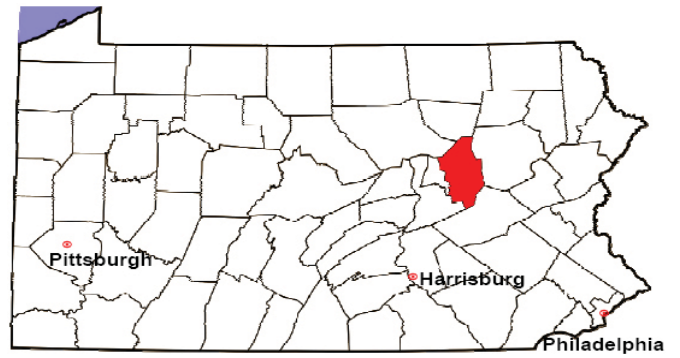
2008 Juvenile Dependency Abuse/Neglect	No. of Petitions	%
Cases Pending 1/1/08	1	
New Cases Filed in '08	51	
Cases Available for Processing	52	
Processed By:		
Judge	1	2.0%
Non-Judicial Officer	46	90.2%
Other	4	7.8%
Cases Processed	51	100.0%
Cases Pending 12/31/08	1	

Abuse/Neglect New Cases Filed, 2000-2008



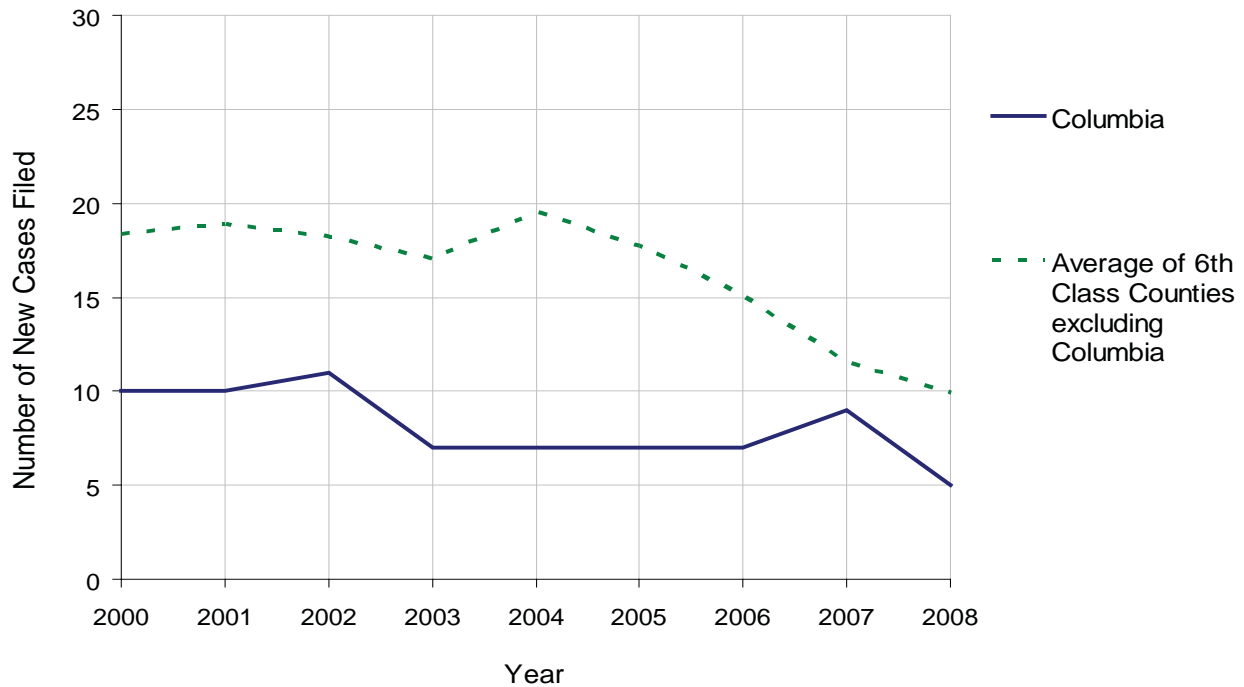
COLUMBIA COUNTY

2008 Population Estimate: 65,004
 Class of County: 6th
 No. of Common Pleas Court Judgeships: 2
 (Columbia and Montour combined)



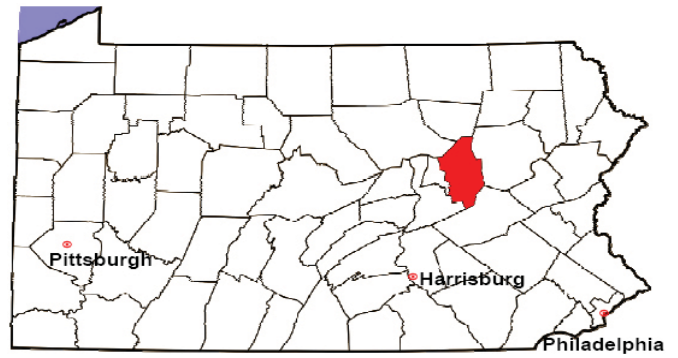
2008 Juvenile Dependency Status Offenses	No. of Petitions	%
Cases Pending 1/1/08	0	
New Cases Filed in '08	5	
Cases Available for Processing	5	
Processed By:		
Judge	1	20.0%
Non-Judicial Officer	4	80.0%
Other	0	0.0%
Cases Processed	5	100.0%
Cases Pending 12/31/08	0	

Status Offenses New Cases Filed, 2000-2008



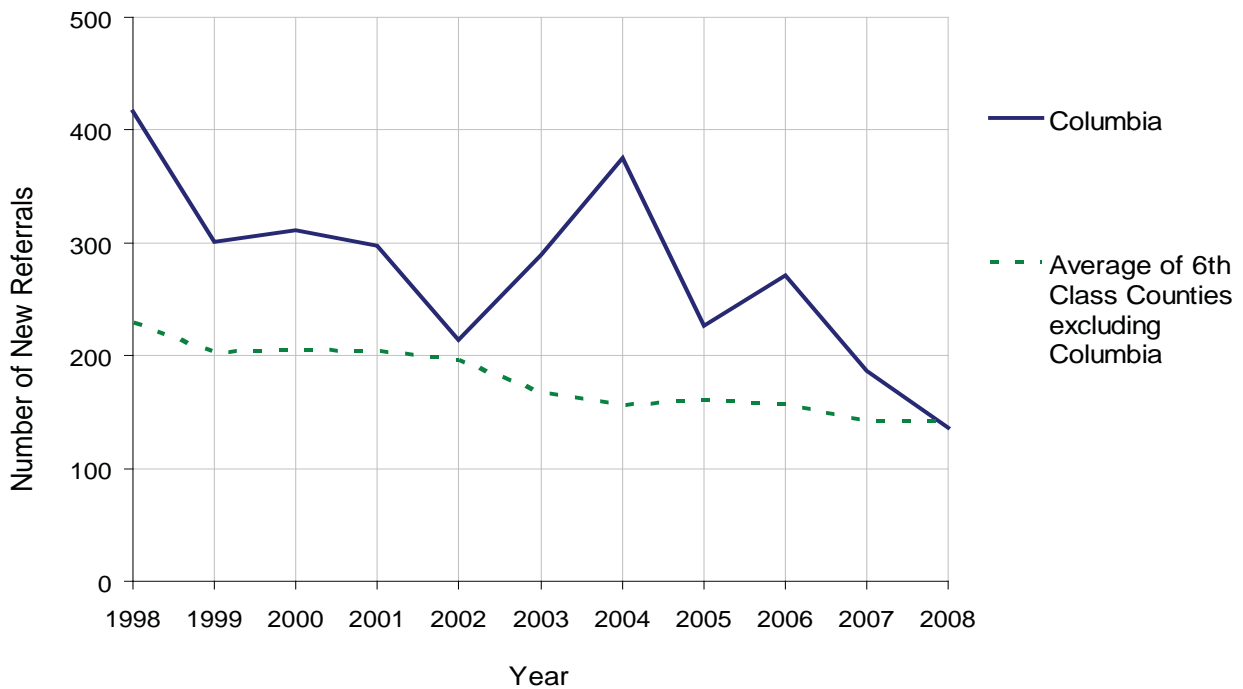
COLUMBIA COUNTY

2008 Population Estimate: 65,004
 Class of County: 6th
 No. of Common Pleas Court Judgeships: 2
 (Columbia and Montour combined)



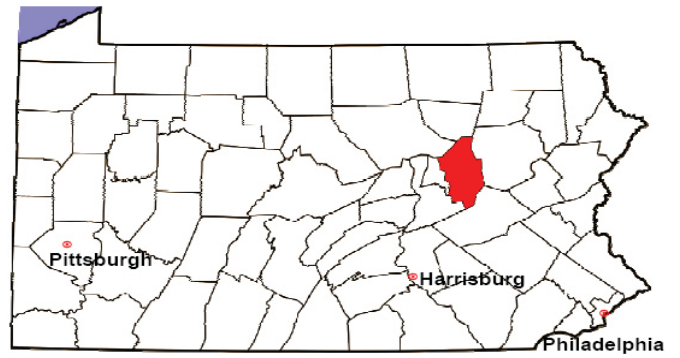
2008 Juvenile Delinquency	No. of Referrals	%
Cases Pending 1/1/08	27	
New Referrals in '08	136	
Cases Available for Processing	163	
Processed By:		
Judge	86	62.8%
Non-Judicial Officer	42	30.7%
Other	9	6.6%
Cases Processed	137	100.0%
Cases Pending 12/31/08	26	

Juvenile Delinquency New Referrals, 1998-2008



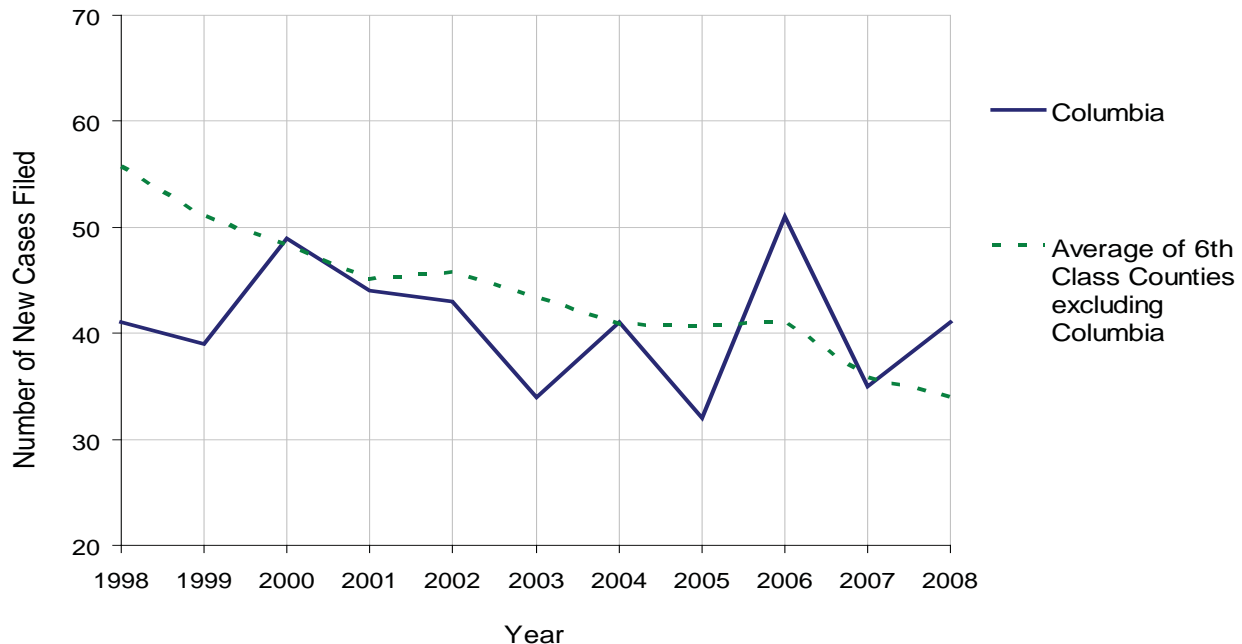
COLUMBIA COUNTY

2008 Population Estimate: 65,004
 Class of County: 6th
 No. of Common Pleas Court Judgeships: 2
 (Columbia and Montour combined)



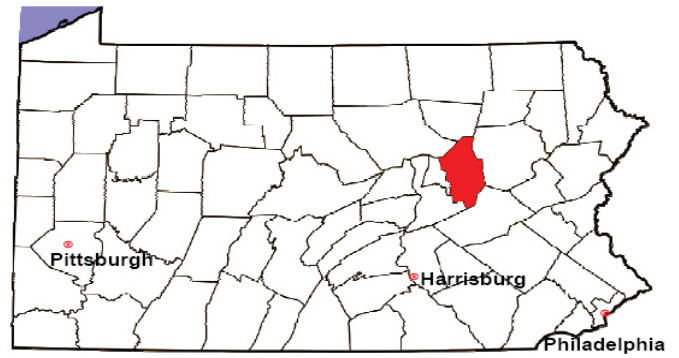
2008 Accounts	No. of Accounts	%
Cases Pending 1/1/08	7	
New Cases Filed in '08	41	
Cases Available for Processing	48	
Processed By:		
Contested before a Judge	0	0.0%
Contested before a Non-Judicial Officer	0	0.0%
Uncontested	34	100.0%
Other	0	0.0%
Cases Processed	34	100.0%
Cases Pending 12/31/08	14	

Accounts New Cases Filed, 1998-2008



COLUMBIA COUNTY

2008 Population Estimate: 65,004
 Class of County: 6th
 No. of Common Pleas Court Judgeships: 2
 (Columbia and Montour combined)



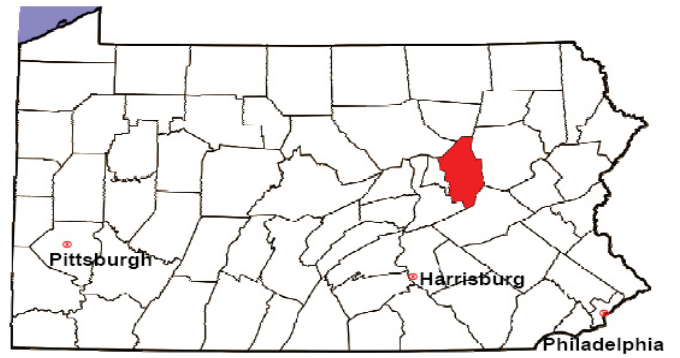
2008 Adoptions		No. of Cases	%
Cases Pending 1/1/08		14 ^(R)	
New Cases Filed in '08		21	
Cases Available for Processing		35	
Processed By:			
Contested before a Judge	Granted	2	7.1%
	Denied	0	0.0%
Uncontested	Granted	26	92.9%
	Denied	0	0.0%
Other		0	0.0%
Cases Processed		28	100.0%
Cases Pending 12/31/08		7	

(R) - Revised

Note: Prior to 2008, each petition was counted as one new case, regardless of the number of children listed on the petition. Starting in 2008, each child listed on a petition is counted as a separate case. Therefore, statistics for 2008 should not be compared with those for previous years.

COLUMBIA COUNTY

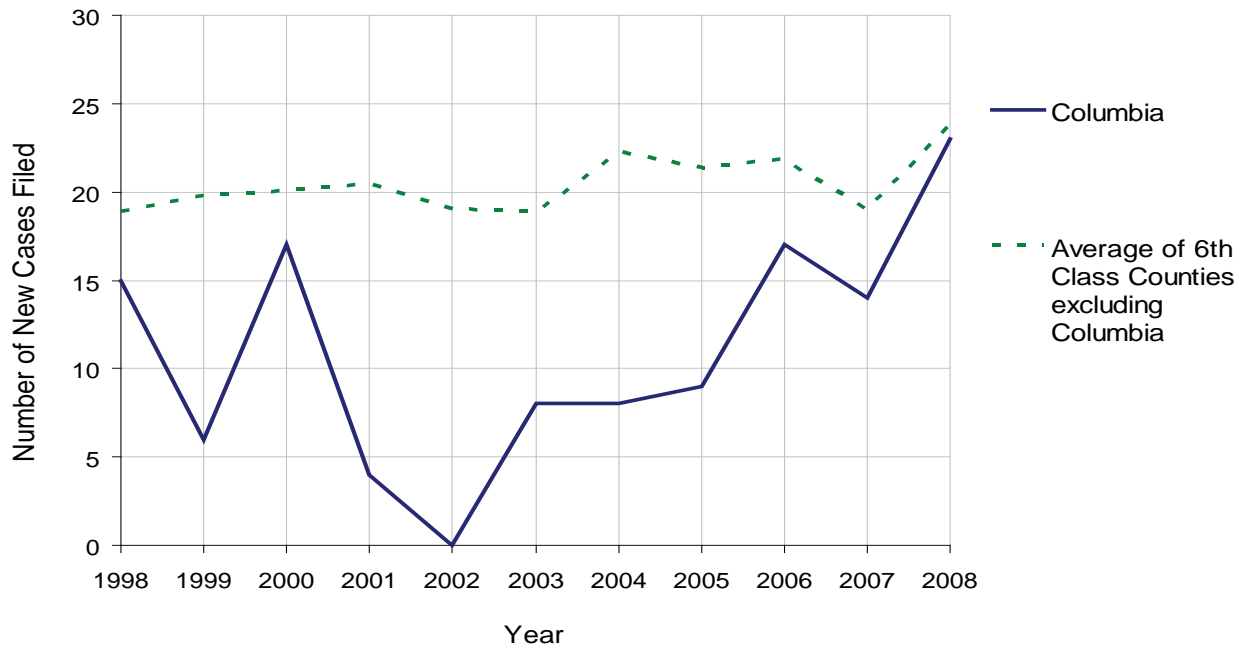
2008 Population Estimate: 65,004
 Class of County: 6th
 No. of Common Pleas Court Judgeships: 2
 (Columbia and Montour combined)



2008 Relinquishments/Terminations	No. of Petitions	%
Cases Pending 1/1/08	4 ^(R)	
New Cases Filed in '08	23	
Cases Available for Processing	27	
Processed By:		
Contested before a Judge	7	41.2%
Uncontested	9	52.9%
Other	1	5.9%
Cases Processed	17	100.0%
Cases Pending 12/31/08	10	

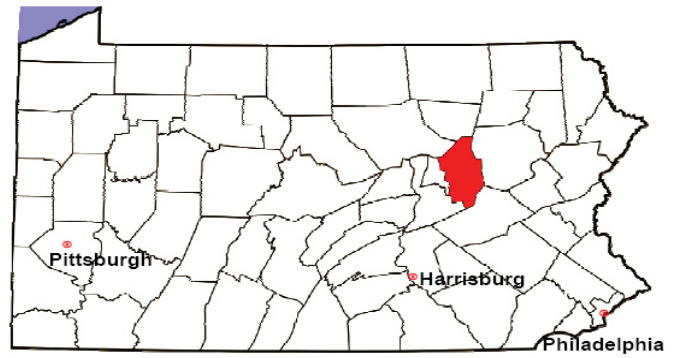
(R) - Revised

Relinquishments/Terminations New Cases Filed, 1998-2008



COLUMBIA COUNTY

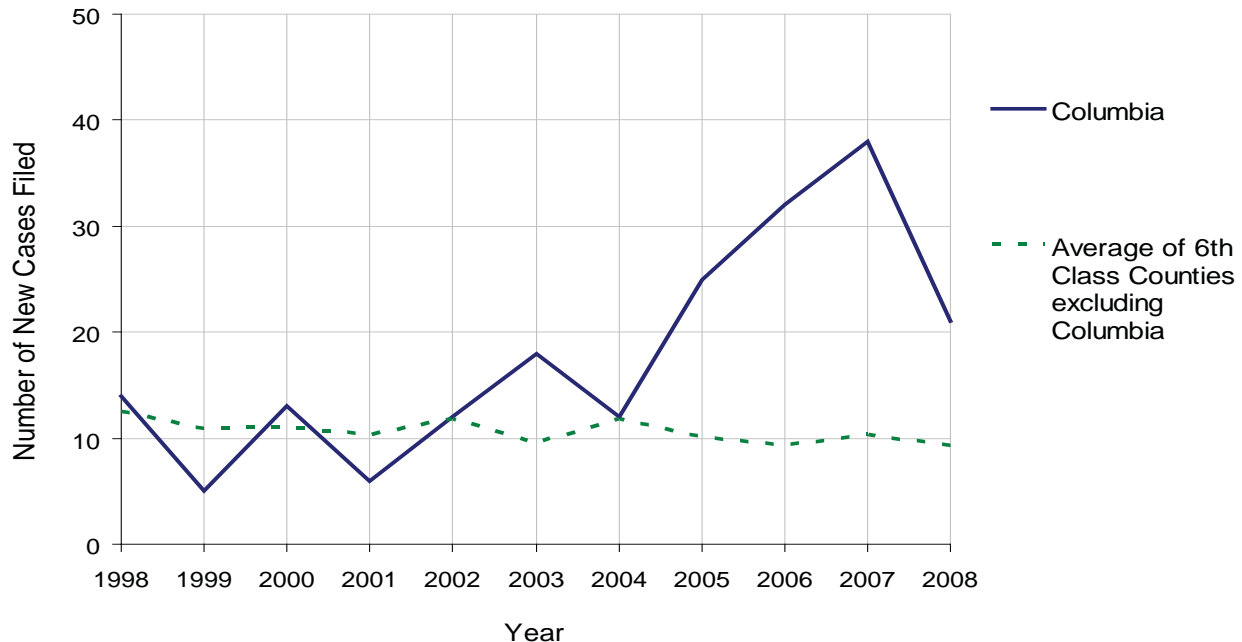
2008 Population Estimate: 65,004
 Class of County: 6th
 No. of Common Pleas Court Judgeships: 2
 (Columbia and Montour combined)



2008 Appointment of Guardians	No. of Petitions	%
Cases Pending 1/1/08	16 ^(R)	
New Cases Filed in '08	21	
Cases Available for Processing	37	
Processed By:		
Contested before a Judge	0	0.0%
Uncontested	27	90.0%
Other	3	10.0%
Cases Processed	30	100.0%
Cases Pending 12/31/08	7	

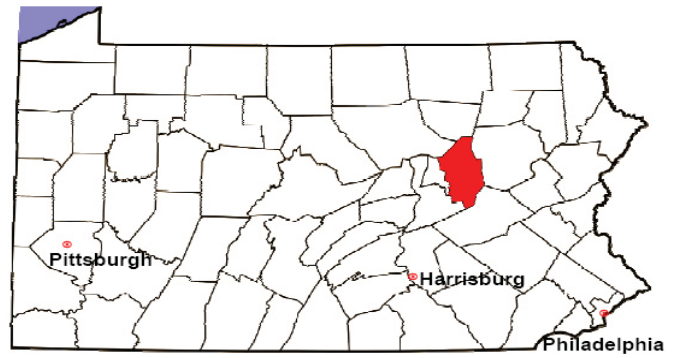
(R) - Revised

Appointment of Guardians New Cases Filed, 1998-2008



COLUMBIA COUNTY

2008 Population Estimate: 65,004
 Class of County: 6th
 No. of Common Pleas Court Judgeships: 2
 (Columbia and Montour combined)



2008 Jury Activity & Performance Measures		
A. Juror Days	431	
B. Number Sent to Voir Dire	492	
Voir Dire Attendance Rate $(B/A * 100)$		114.2%
C. Number of Voir Dires Started	18	
Juror Days Per Voir Dire Starts (A/C)		24
D. Number of Jurors Selected	252	
Juror Selection Rate $(D/B * 100)$		51.2%
E. Number of Jury Trials Started	12	
Juror Days Per Trial Starts (A/E)		36
Number of Voir Dires Not Resulting in Trial $(C-E)$		6
Percent Voir Dires Not Resulting in Trial $(C-E)/C * 100$		33.3%
F. Pool Days	5	
G. Zero Panel Days	0	
Percent Zero Panel Days $(G/F * 100)$		0.0%
H. Total Juror Fees Incurred	\$8,421	
Average Juror Fees Per Trial (H/E)		\$702

Average Juror Fees Per Trial, 1998-2008

