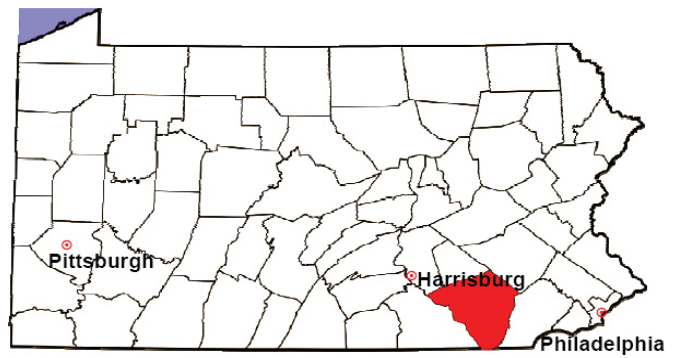


# LANCASTER COUNTY

2008 Population Estimate: 502,370

Class of County: 3rd

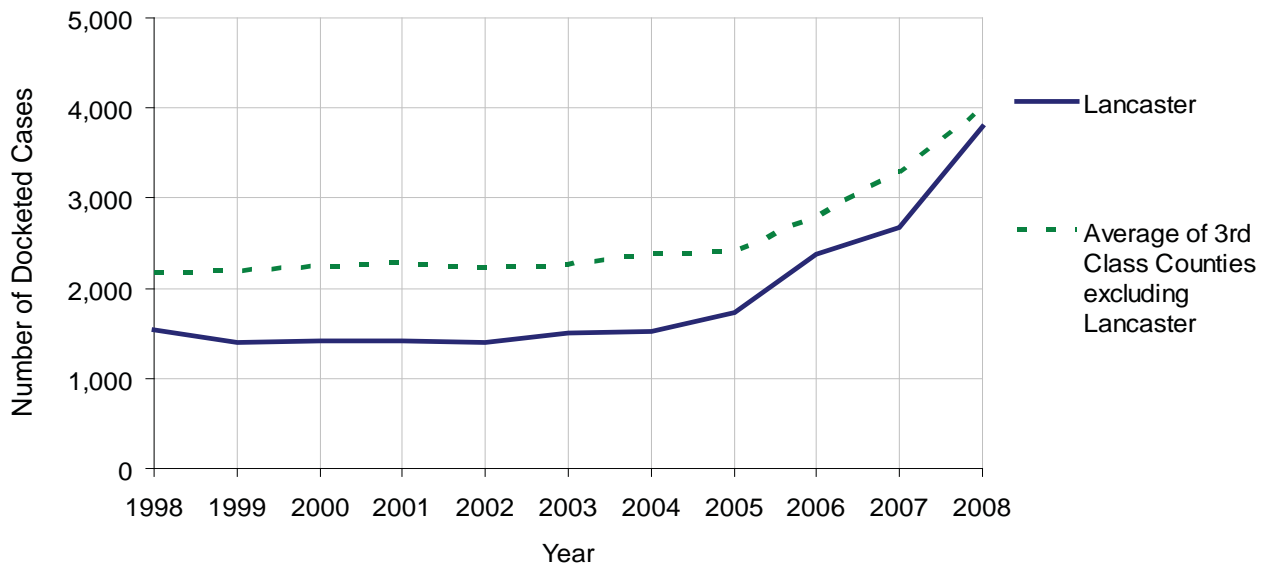
No. of Common Pleas Court Judgeships: 15



2008 Civil		Civil Action		
Docketed Cases		3,788		
Arbitrated Cases		91		
Trial-Ready Cases:		Civil Action	Other	Total
Cases Pending 1/1/08		39	66	105
Became Trial Ready in '08		47	6	53
Restored to Trial List		7	1	8
Appeals from Arbitration		14	0	14
<b>Cases Available for Trial</b>		<b>107</b>	<b>73</b>	<b>180</b>
Disposed By:				
Settlement		45	4	49
Non-Jury Trial		1	1	2
Jury Trial		5	0	5
Stricken from Trial List		8	1	9
Other		4	0	4
<b>Cases Disposed</b>		<b>63</b>	<b>6</b>	<b>69</b>
<b>Cases Pending 12/31/08</b>		<b>44</b>	<b>67</b>	<b>111</b>

Age of Trial-Ready Cases as of 12/31/08 (Civil Action Only)		
0-6 months	31	70%
7-12 months	12	27%
13-18 months	0	0%
19-24 months	1	2%
25-30 months	0	0%
31-36 months	0	0%
Over 36 months	0	0%
<b>Total</b>	<b>44</b>	<b>100%</b>

Docketed Cases, 1998-2008

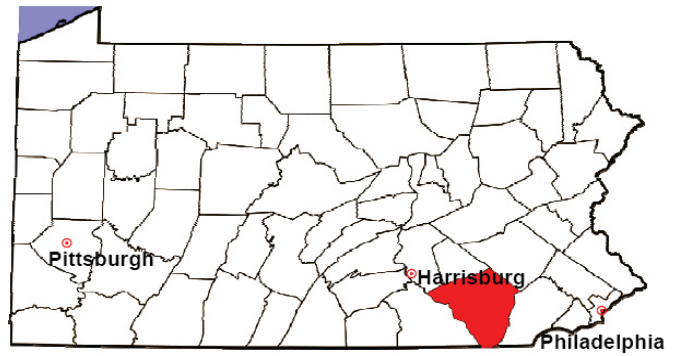


# LANCASTER COUNTY

2008 Population Estimate: 502,370

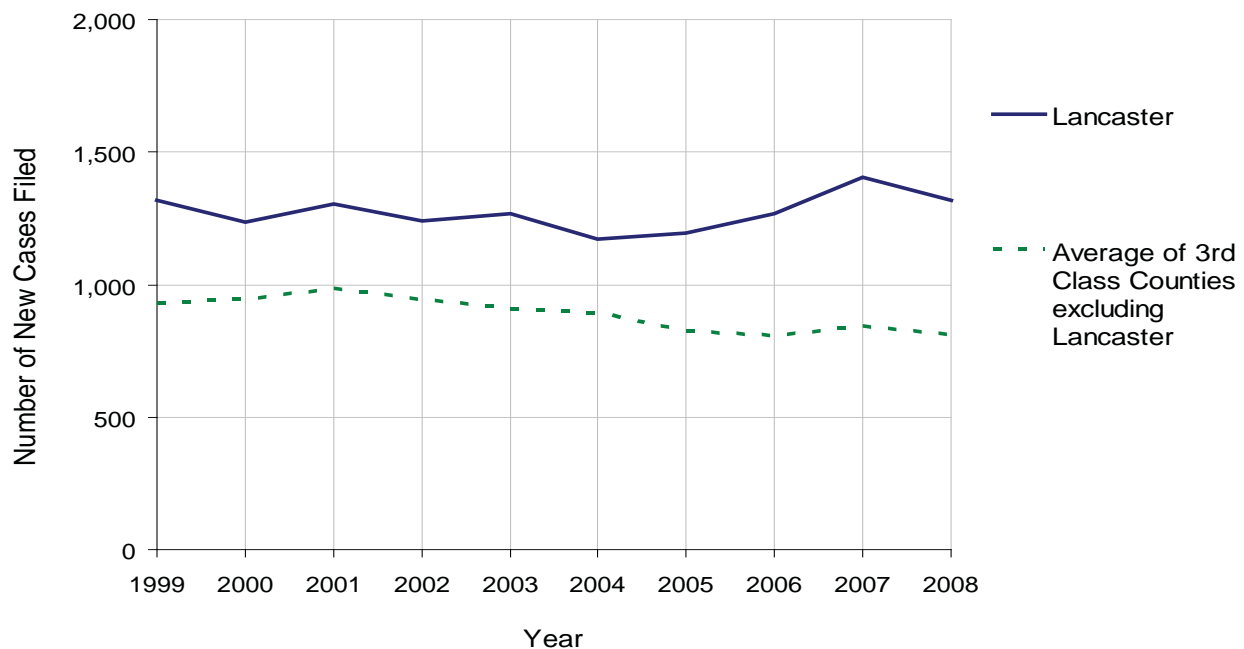
Class of County: 3rd

No. of Common Pleas Court Judgeships: 15



<b>2008 Protection From Abuse</b>	No. of Petitions	%
Cases Pending 1/1/08	206	
New Cases Filed in '08	1,319	
<b>Cases Available for Processing</b>	<b>1,525</b>	
Processed By:		
Final Order After Hearing	103	7.9%
Final Order by Stipulation or Agreement	344	26.2%
Dismissal	208	15.9%
Withdrawal	648	49.4%
Other	8	0.6%
<b>Cases Processed</b>	<b>1,311</b>	<b>100.0%</b>
<b>Cases Pending 12/31/08</b>	<b>214</b>	

PFA New Cases Filed, 1999-2008

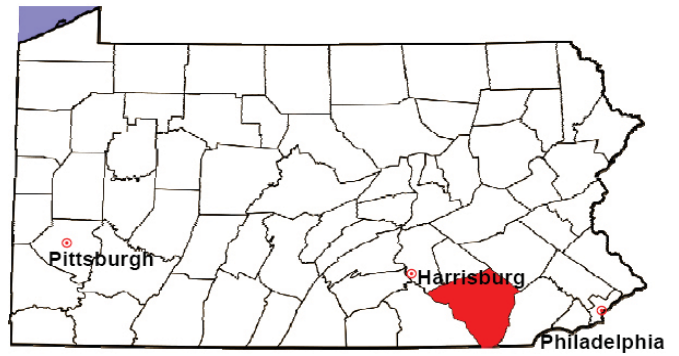


# LANCASTER COUNTY

2008 Population Estimate: 502,370

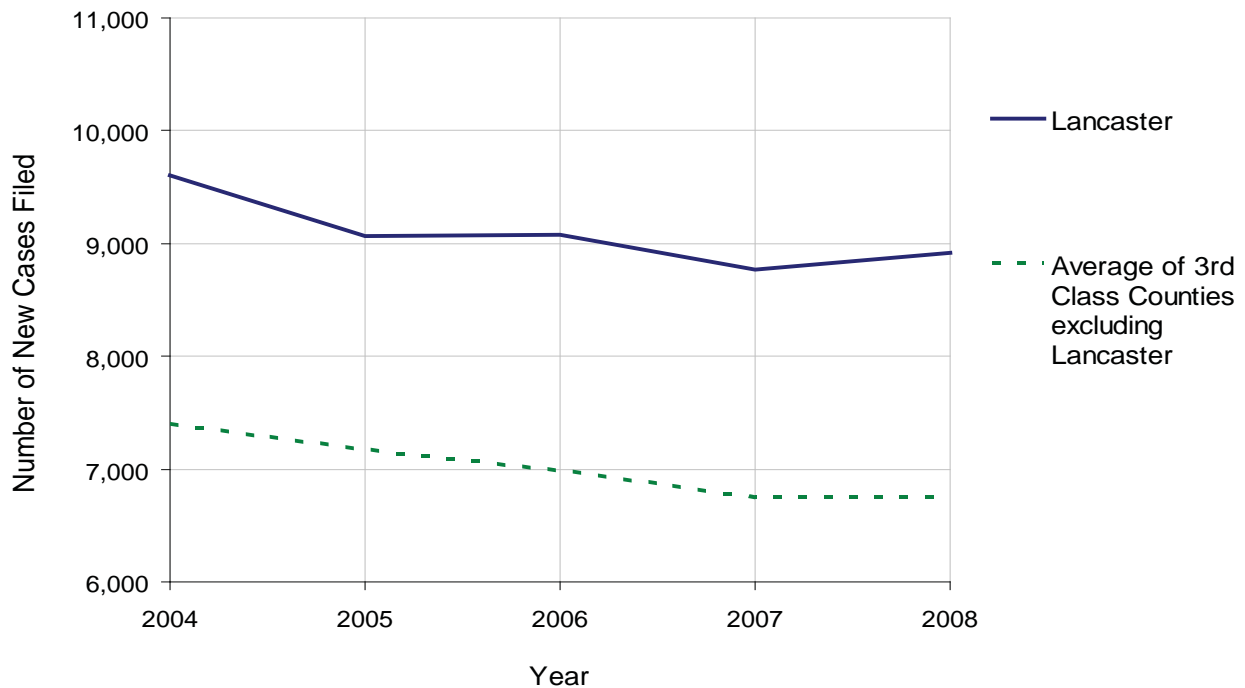
Class of County: 3rd

No. of Common Pleas Court Judgeships: 15



<b>2008 Spousal &amp; Child Support</b>	No. of Petitions	%
Cases Pending 1/1/08	2,323	
New Cases Filed in '08	8,916	
Dockets Transferred In (+)	103	
Dockets Transferred Out (-)	187	
<b>Cases Available for Processing</b>	<b>11,155</b>	
Processed By:		
Judge	751	8.4%
Intake Officer	8,217	91.6%
Hearing Officer	0	0.0%
Other	0	0.0%
<b>Cases Processed</b>	<b>8,968</b>	<b>100.0%</b>
<b>Cases Pending 12/31/08</b>	<b>2,187</b>	

Spousal & Child Support New Cases Filed, 1998-2008

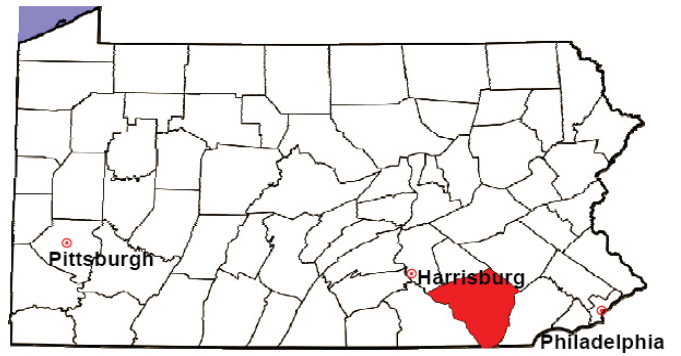


# LANCASTER COUNTY

2008 Population Estimate: 502,370

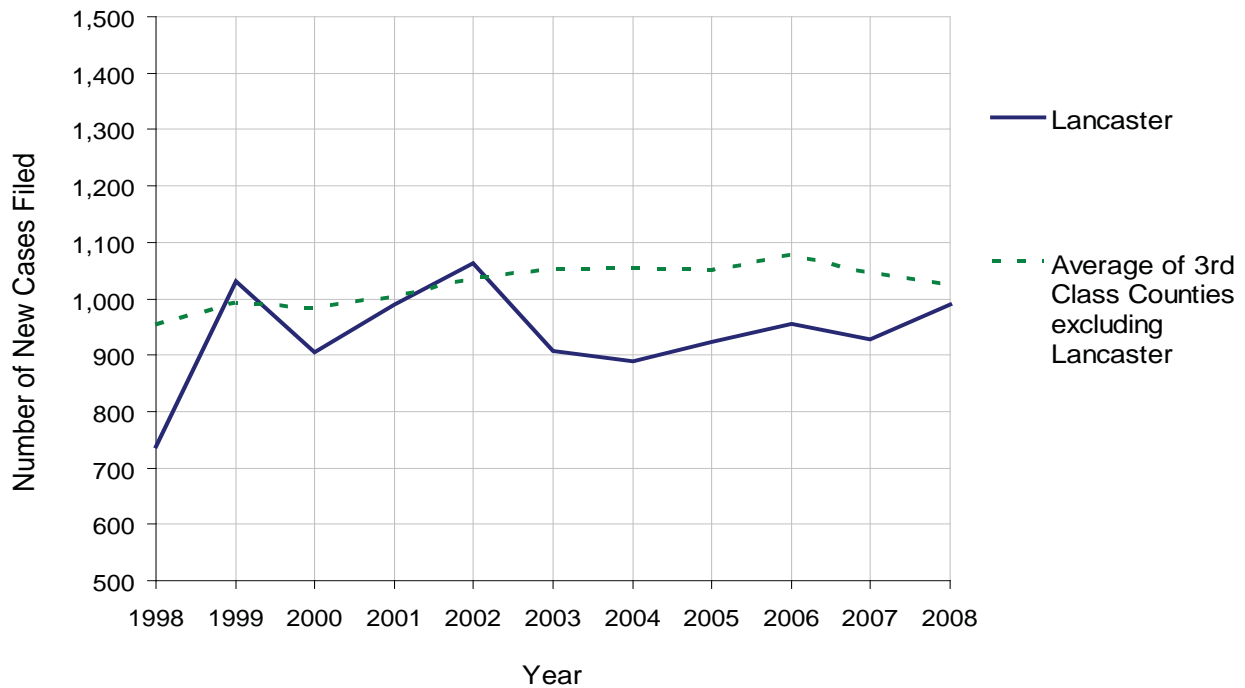
Class of County: 3rd

No. of Common Pleas Court Judgeships: 15



<b>2008 Custody/Partial Custody/Visitation</b>	No. of Petitions	%
Cases Pending 1/1/08	49	
New Cases Filed in '08	989	
<b>Cases Available for Processing</b>	<b>1038</b>	
Processed By:		
Judge	142	14.7%
<b>Non-Judicial Officer</b>	<b>732</b>	<b>76.0%</b>
Other	89	9.2%
<b>Cases Processed</b>	<b>963</b>	<b>100.0%</b>
<b>Cases Pending 12/31/08</b>	<b>75</b>	

Custody/Partial Custody/Visitation New Cases Filed  
1998-2008

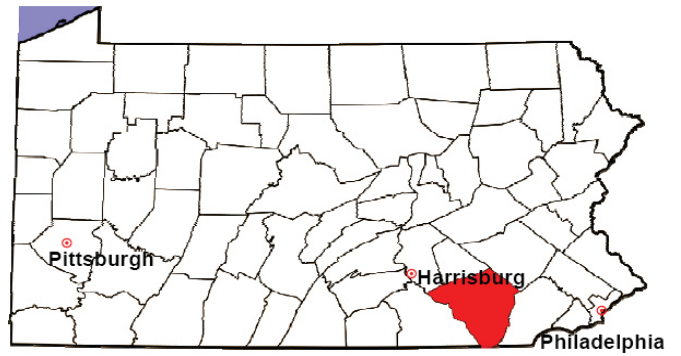


# LANCASTER COUNTY

2008 Population Estimate: 502,370

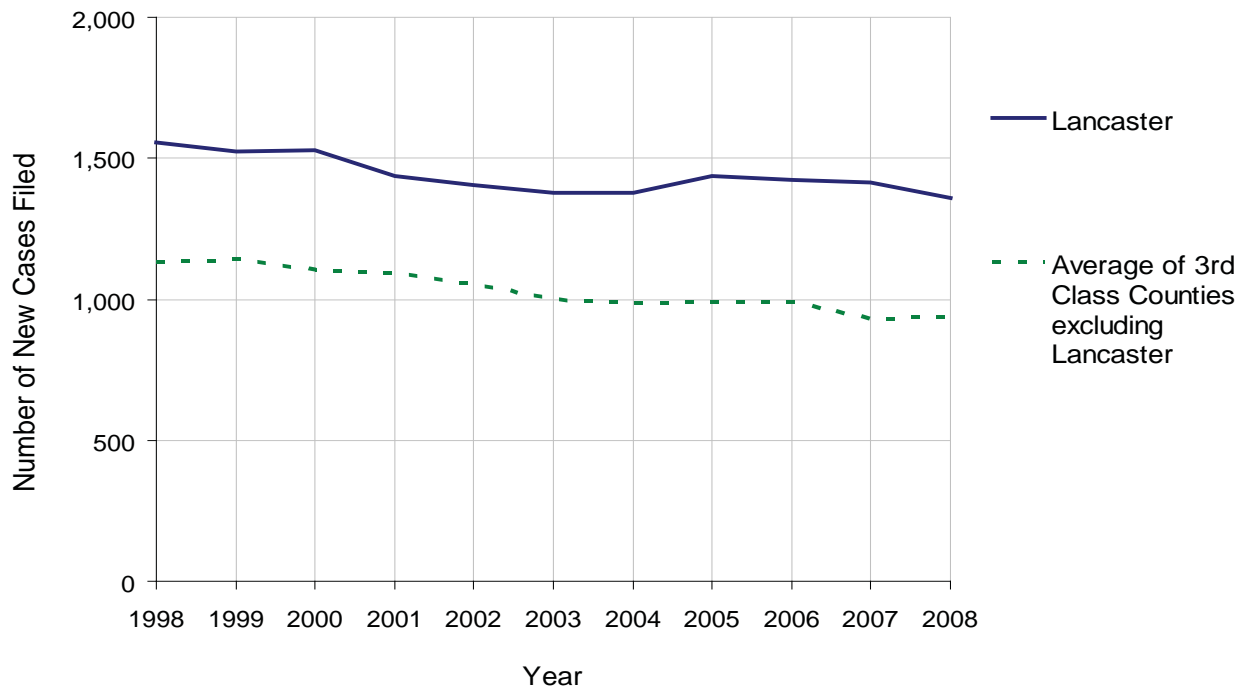
Class of County: 3rd

No. of Common Pleas Court Judgeships: 15



<b>2008 Divorce</b>	No. of Petitions	%
Cases Pending 1/1/08	2,704	
New Cases Filed in '08	1,359	
<b>Cases Available for Processing</b>	<b>4,063</b>	
Processed By:		
Contested Before a Judge	0	0.0%
Contested Before a Master	17	1.4%
Uncontested	1,235	98.6%
Other	0	0.0%
<b>Cases Processed</b>	<b>1,252</b>	<b>100.0%</b>
<b>Cases Pending 12/31/08</b>	<b>2,811</b>	

Divorce New Cases Filed, 1998-2008

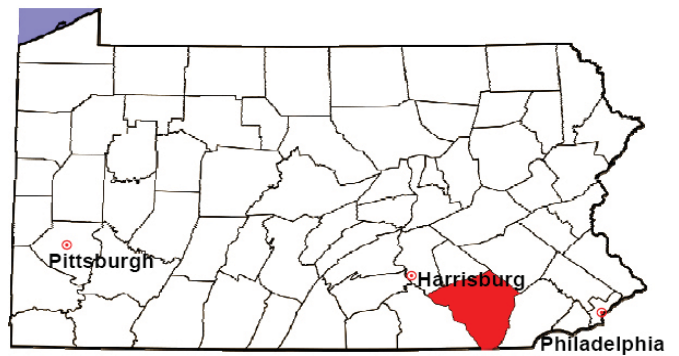


# LANCASTER COUNTY

2008 Population Estimate: 502,370

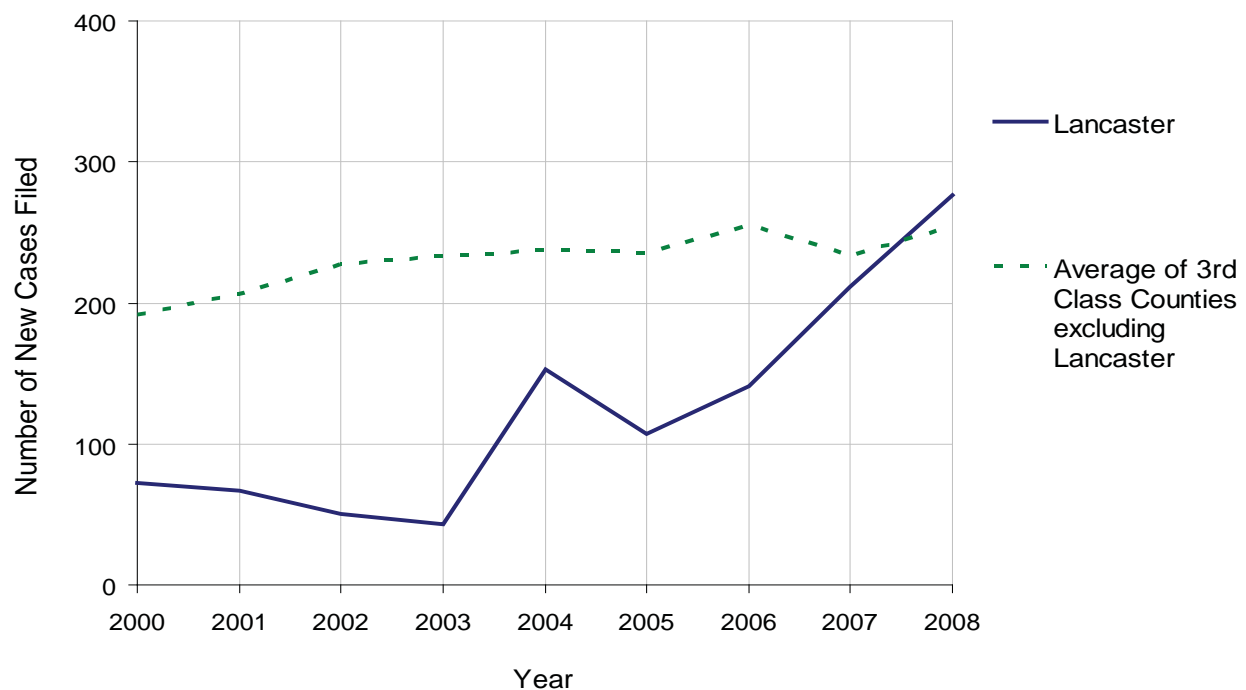
Class of County: 3rd

No. of Common Pleas Court Judgeships: 15



<b>2008 Juvenile Dependency Abuse/Neglect</b>	<b>No. of Petitions</b>	<b>%</b>
Cases Pending 1/1/08	30	
New Cases Filed in '08	276	
<b>Cases Available for Processing</b>	<b>306</b>	
Processed By:		
Judge	276	99.3%
Non-Judicial Officer	2	0.7%
Other	0	0.0%
<b>Cases Processed</b>	<b>278</b>	<b>100.0%</b>
<b>Cases Pending 12/31/08</b>	<b>28</b>	

Abuse/Neglect New Cases Filed, 2000-2008

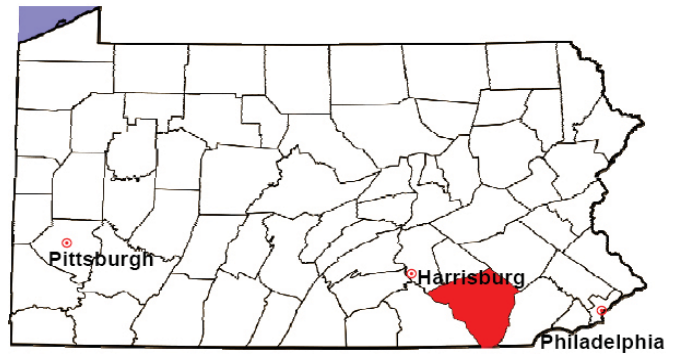


# LANCASTER COUNTY

2008 Population Estimate: 502,370

Class of County: 3rd

No. of Common Pleas Court Judgeships: 15



## 2008 Juvenile Dependency Status Offenses

Not Applicable:

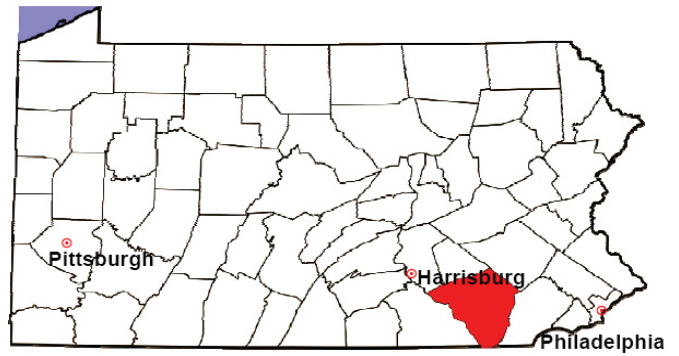
In some counties, status offense petitions are not filed.

# LANCASTER COUNTY

2008 Population Estimate: 502,370

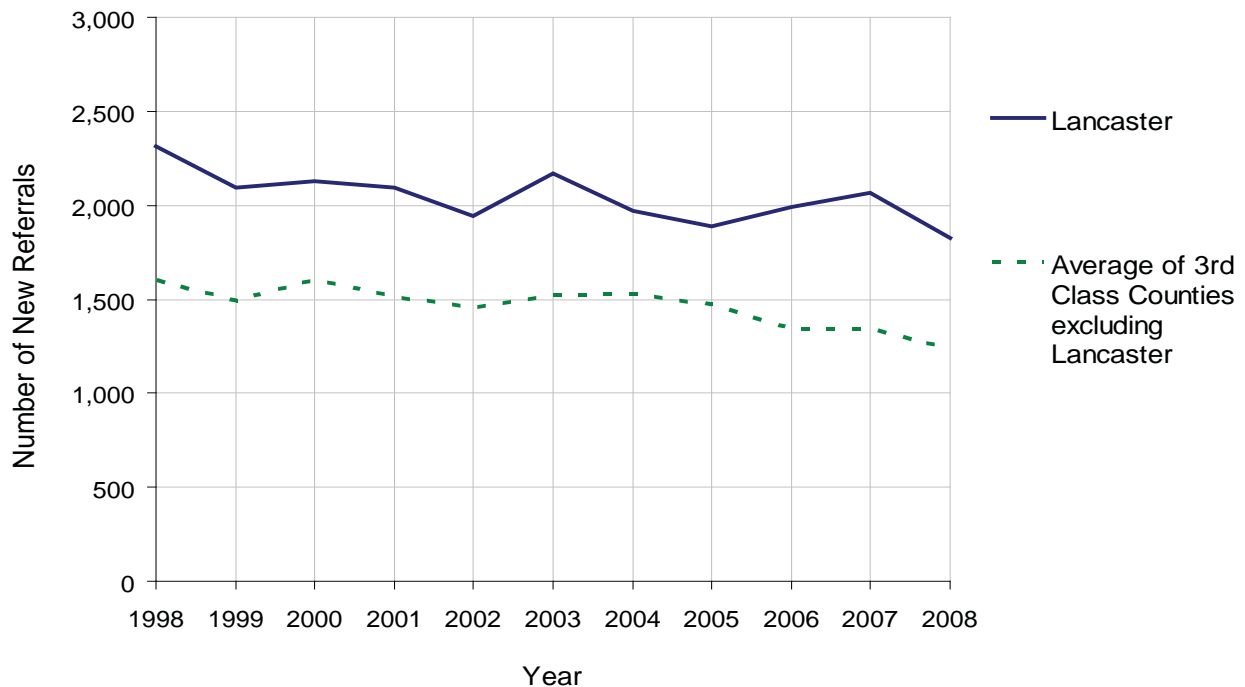
Class of County: 3rd

No. of Common Pleas Court Judgeships: 15



<b>2008 Juvenile Delinquency</b>	No. of Referrals	%
Cases Pending 1/1/08	1,193	
New Referrals in '08	1,828	
<b>Cases Available for Processing</b>	<b>3,021</b>	
Processed By:		
Judge	1,170	43.8%
Non-Judicial Officer	591	22.1%
Other	913	34.1%
<b>Cases Processed</b>	<b>2,674</b>	<b>100.0%</b>
<b>Cases Pending 12/31/08</b>	<b>347</b>	

Juvenile Delinquency New Referrals, 1998-2008

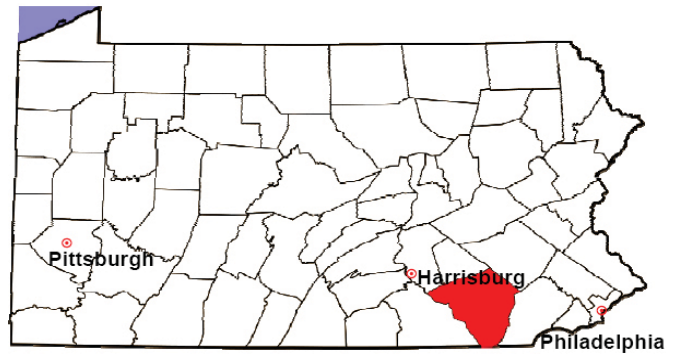


# LANCASTER COUNTY

2008 Population Estimate: 502,370

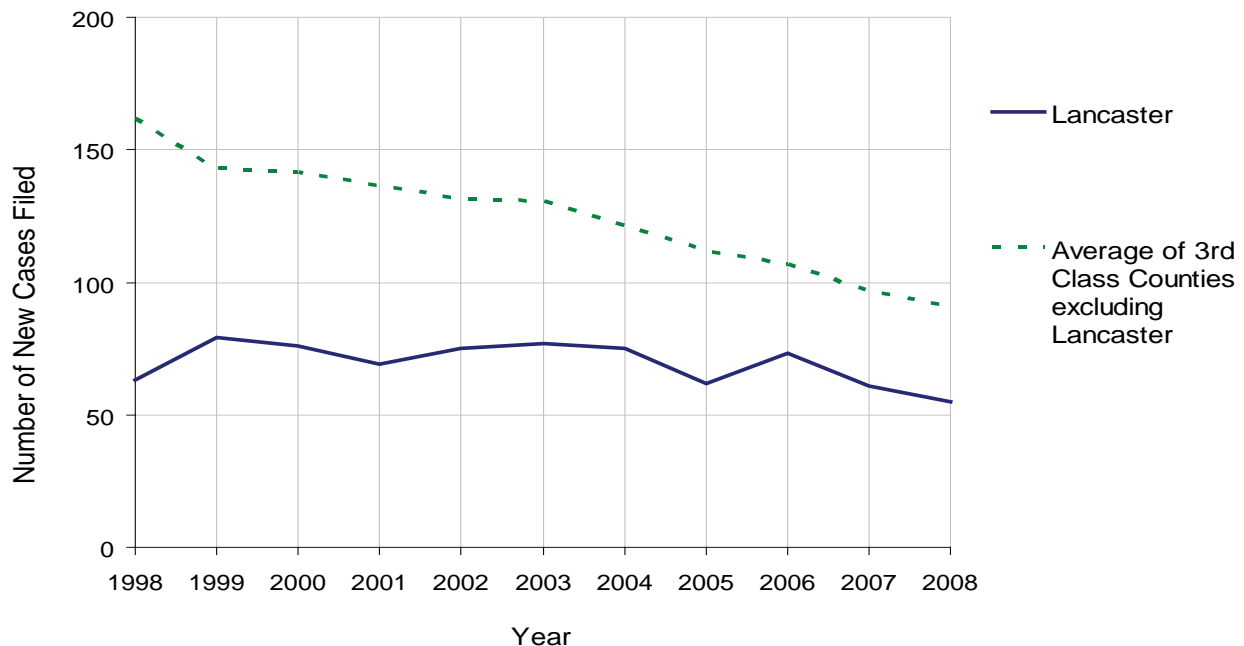
Class of County: 3rd

No. of Common Pleas Court Judgeships: 15



2008 Accounts	No. of Accounts	%
Cases Pending 1/1/08	62	
New Cases Filed in '08	55	
<b>Cases Available for Processing</b>	<b>117</b>	
Processed By:		
Contested before a Judge	1	2.4%
Contested before a Non-Judicial Officer	0	0.0%
Uncontested	36	87.8%
Other	4	9.8%
<b>Cases Processed</b>	<b>41</b>	<b>100.0%</b>
<b>Cases Pending 12/31/08</b>	<b>76</b>	

Accounts New Cases Filed, 1998-2008

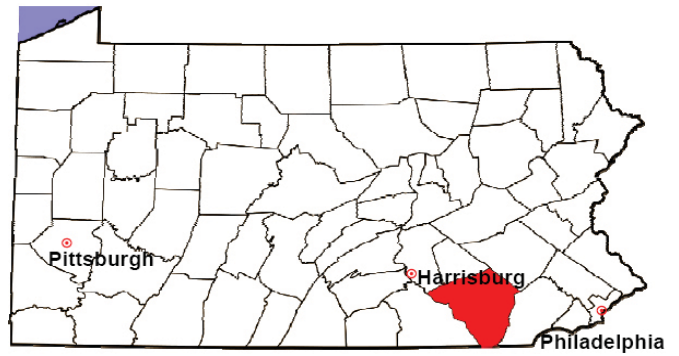


# LANCASTER COUNTY

2008 Population Estimate: 502,370

Class of County: 3rd

No. of Common Pleas Court Judgeships: 15



<b>2008 Adoptions</b>		No. of Cases	%
Cases Pending 1/1/08		66	
New Cases Filed in '08		254	
<b>Cases Available for Processing</b>		<b>320</b>	
Processed By:			
Contested before a Judge	Granted	3	1.2%
	Denied	0	0.0%
Uncontested	Granted	239	95.2%
	Denied	0	0.0%
Other		9	3.6%
<b>Cases Processed</b>		<b>251</b>	<b>100.0%</b>
<b>Cases Pending 12/31/08</b>		<b>69</b>	

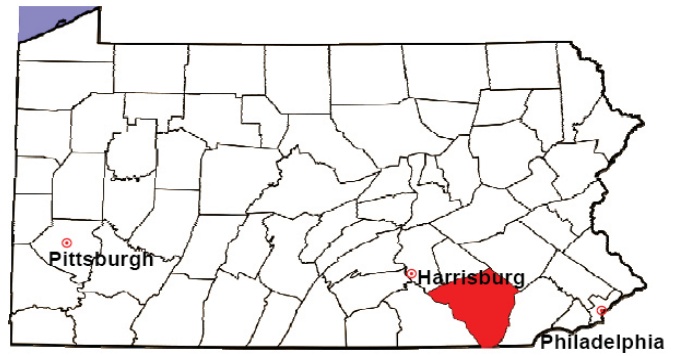
Note: Prior to 2008, each petition was counted as one new case, regardless of the number of children listed on the petition. Starting in 2008, each child listed on a petition is counted as a separate case. Therefore, statistics for 2008 should not be compared with those for previous years.

# LANCASTER COUNTY

2008 Population Estimate: 502,370

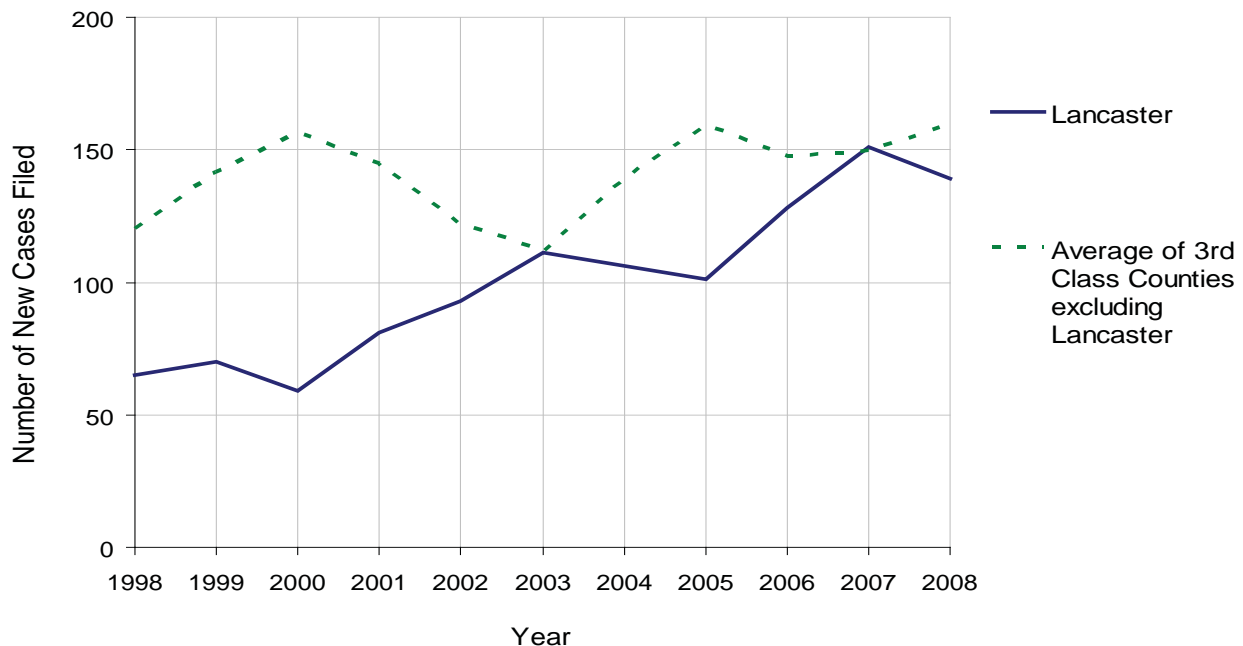
Class of County: 3rd

No. of Common Pleas Court Judgeships: 15



<b>2008 Relinquishments/Terminations</b>	No. of Petitions	%
Cases Pending 1/1/08	80	
New Cases Filed in '08	139	
<b>Cases Available for Processing</b>	<b>219</b>	
Processed By:		
Contested before a Judge	40	30.8%
Uncontested	85	65.4%
Other	5	3.8%
<b>Cases Processed</b>	<b>130</b>	<b>100.0%</b>
<b>Cases Pending 12/31/08</b>	<b>89</b>	

Relinquishments/Terminations New Cases Filed, 1998-2008

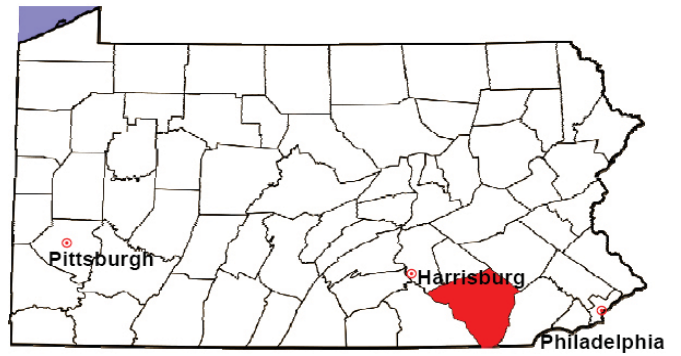


# LANCASTER COUNTY

2008 Population Estimate: 502,370

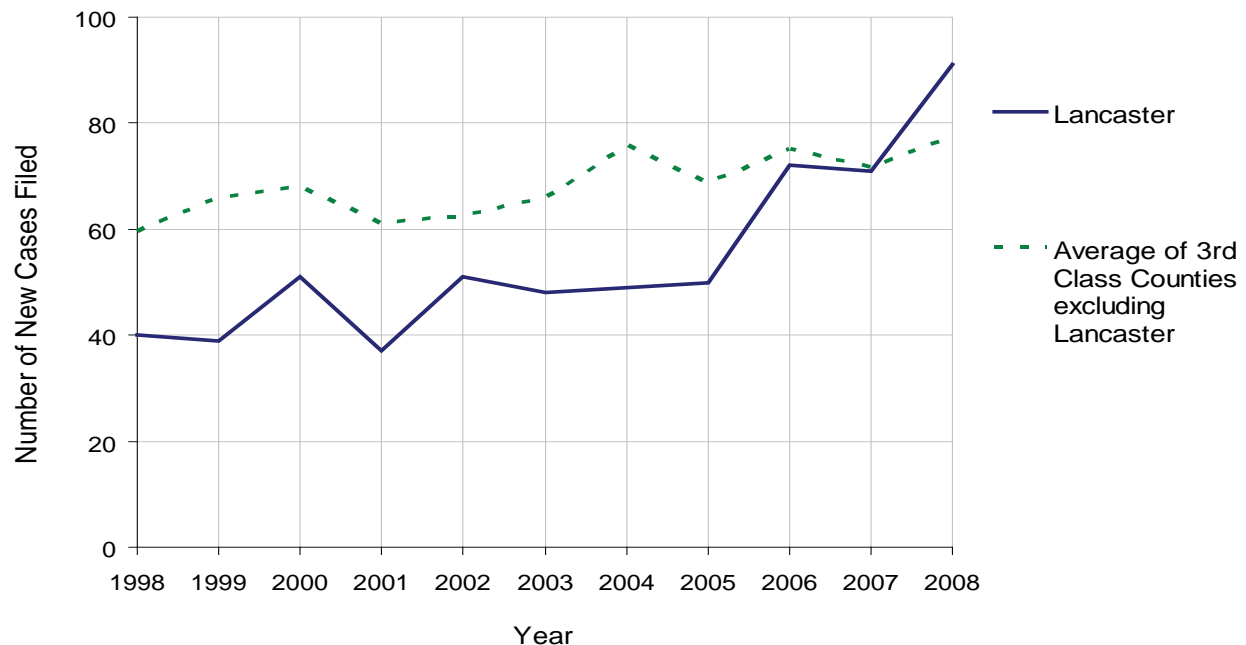
Class of County: 3rd

No. of Common Pleas Court Judgeships: 15



2008 Appointment of Guardians	No. of Petitions	%
Cases Pending 1/1/08	13	
New Cases Filed in '08	91	
<b>Cases Available for Processing</b>	<b>104</b>	
Processed By:		
Contested before a Judge	32	39.5%
Uncontested	38	46.9%
Other	11	13.6%
<b>Cases Processed</b>	<b>81</b>	<b>100.0%</b>
<b>Cases Pending 12/31/08</b>	<b>23</b>	

Appointment of Guardians New Cases Filed, 1998-2008

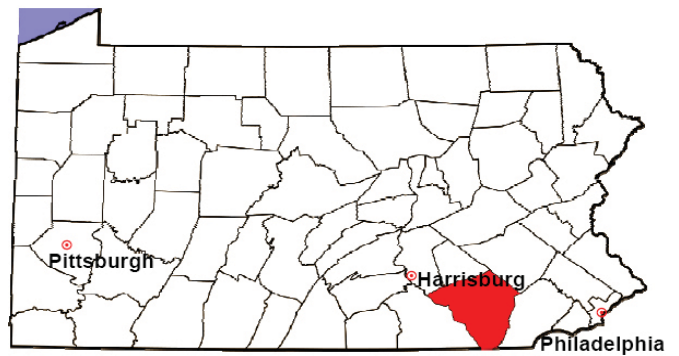


# LANCASTER COUNTY

2008 Population Estimate: 502,370

Class of County: 3rd

No. of Common Pleas Court Judgeships: 15



## 2008 Jury Activity & Performance Measures

A. Juror Days	7,511
B. Number Sent to Voir Dire	3,713
Voir Dire Attendance Rate $(B/A * 100)$	49.4%
C. Number of Voir Dires Started	96
Juror Days Per Voir Dire Starts $(A/C)$	78
D. Number of Jurors Selected	1,276
Juror Selection Rate $(D/B * 100)$	34.4%
E. Number of Jury Trials Started	91
Juror Days Per Trial Starts $(A/E)$	83
Number of Voir Dires Not Resulting in Trial $(C-E)$	5
Percent Voir Dires Not Resulting in Trial $(C-E)/C * 100$	5.2%
F. Pool Days	66
G. Zero Panel Days	11
Percent Zero Panel Days $(G/F * 100)$	16.7%
H. Total Juror Fees Incurred	\$127,330
Average Juror Fees Per Trial $(H/E)$	\$1,399

Average Juror Fees Per Trial, 1998-2008

