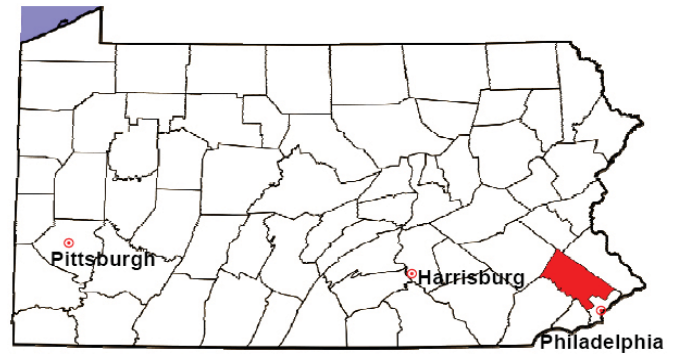


MONTGOMERY COUNTY

2008 Population Estimate: 778,048

Class of County: 2A

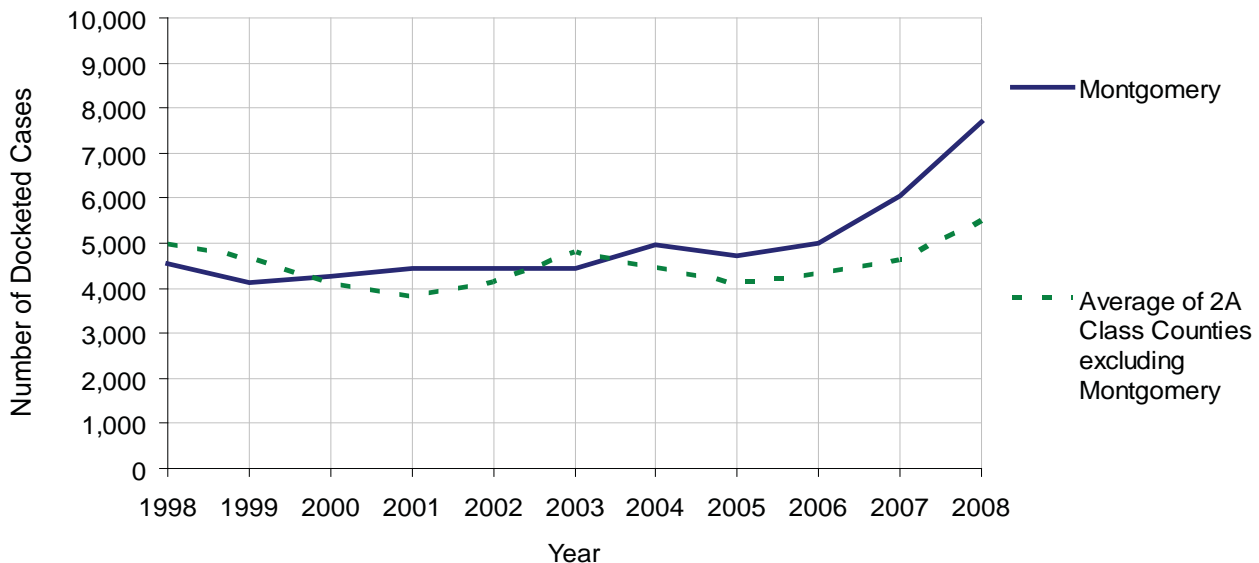
No. of Common Pleas Court Judgeships: 21



2008 Civil	Civil Action		
Docketed Cases	7,678		
Arbitrated Cases	451		
Trial-Ready Cases:	Civil Action	Other	Total
Cases Pending 1/1/08	509	44	553
Became Trial Ready in '08	424	48	472
Restored to Trial List	27	1	28
Appeals from Arbitration	162	3	165
Cases Available for Trial	1,122	96	1,218
Disposed By:			
Settlement	241	23	264
Non-Jury Trial	42	7	49
Jury Trial	61	0	61
Stricken from Trial List	60	9	69
Other	122	5	127
Cases Disposed	526	44	570
Cases Pending 12/31/08	596	52	648

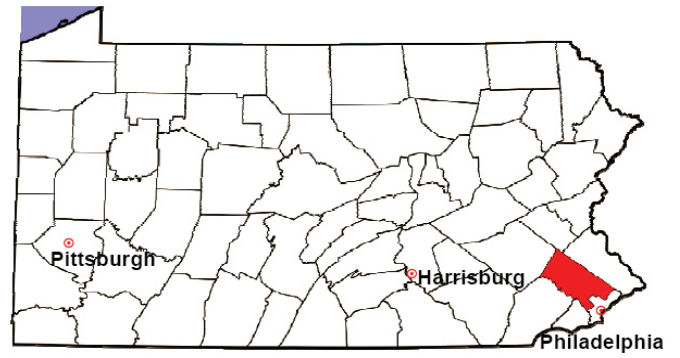
Age of Trial-Ready Cases as of 12/31/08 (Civil Action Only)		
0-6 months	251	42%
7-12 months	154	26%
13-18 months	89	15%
19-24 months	62	10%
25-30 months	26	4%
31-36 months	9	2%
Over 36 months	5	1%
Total	596	100%

Docketed Cases, 1998-2008



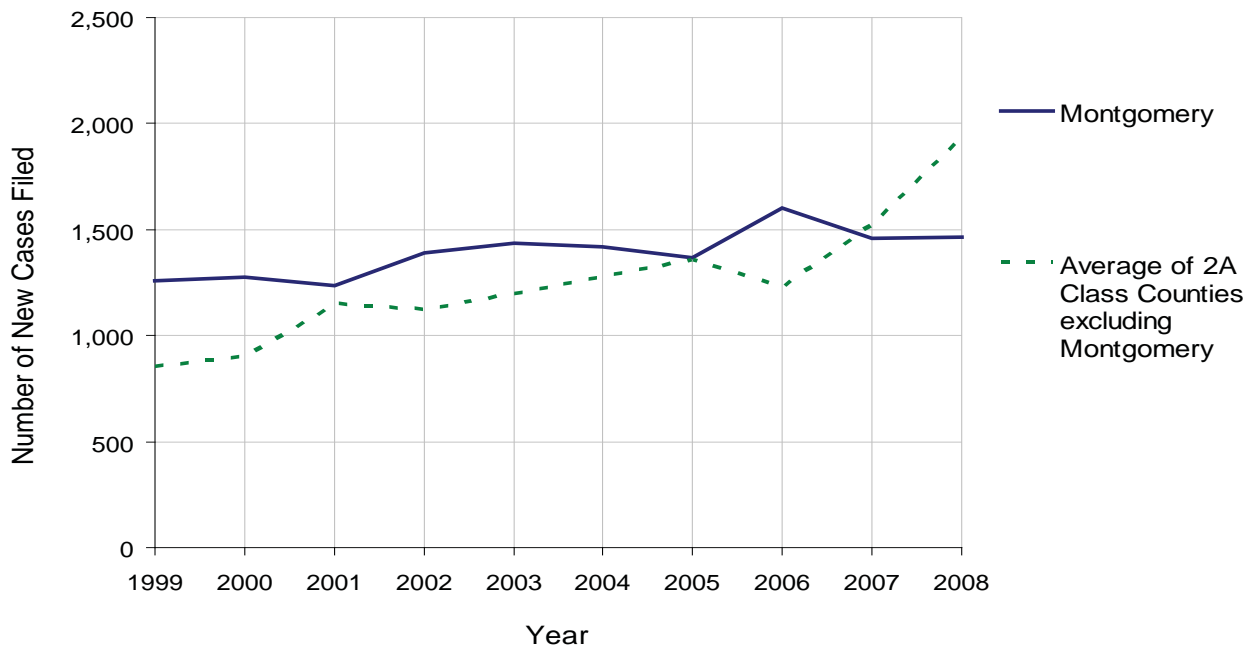
MONTGOMERY COUNTY

2008 Population Estimate: 778,048
 Class of County: 2A
 No. of Common Pleas Court Judgeships: 21



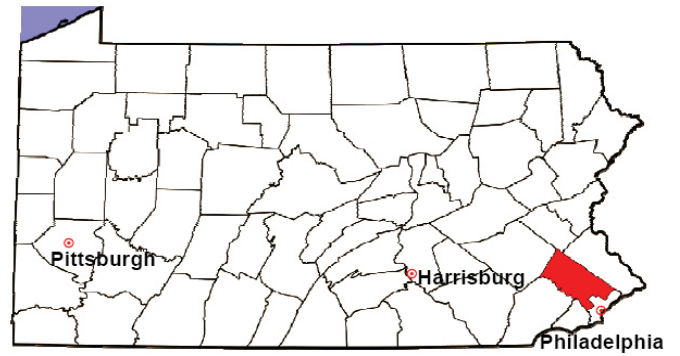
2008 Protection From Abuse	No. of Petitions	%
Cases Pending 1/1/08	79	
New Cases Filed in '08	1,467	
Cases Available for Processing	1,546	
Processed By:		
Final Order After Hearing	363	23.9%
Final Order by Stipulation or Agreement	384	25.2%
Dismissal	268	17.6%
Withdrawal	506	33.3%
Other	0	0.0%
Cases Processed	1,521	100.0%
Cases Pending 12/31/08	25	

PFA New Cases Filed, 1999-2008



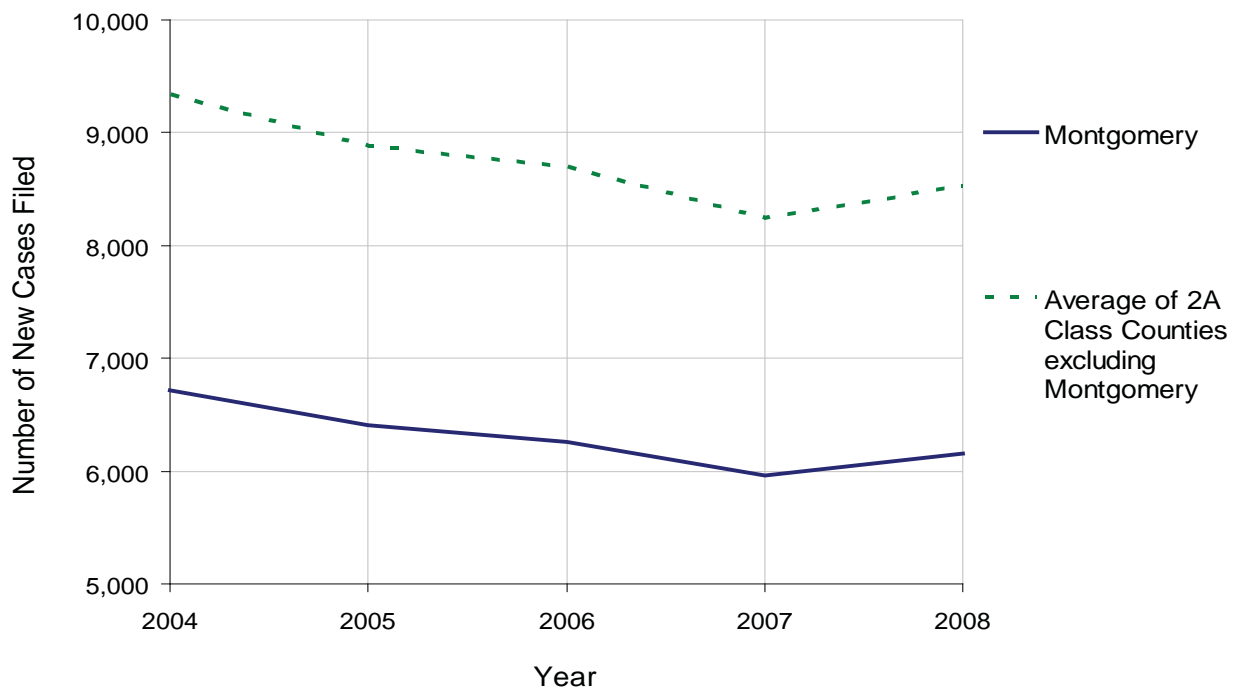
MONTGOMERY COUNTY

2008 Population Estimate: 778,048
 Class of County: 2A
 No. of Common Pleas Court Judgeships: 21



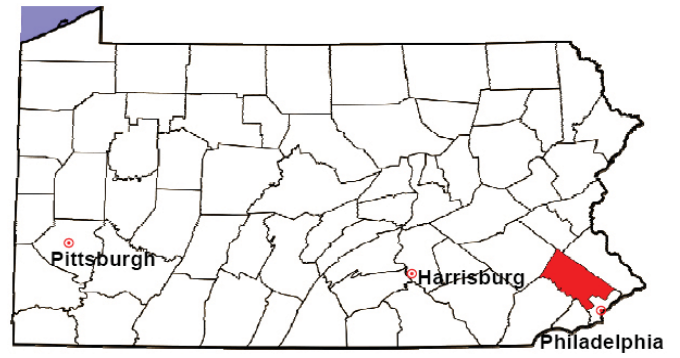
2008 Spousal & Child Support	No. of Petitions	%
Cases Pending 1/1/08	1,850	
New Cases Filed in '08	6,159	
Dockets Transferred In (+)	83	
Dockets Transferred Out (-)	141	
Cases Available for Processing	7,951	
Processed By:		
Judge	138	2.3%
Intake Officer	4,600	75.2%
Hearing Officer	1,363	22.3%
Other	19	0.3%
Cases Processed	6,120	100.0%
Cases Pending 12/31/08	1,831	

Spousal & Child Support New Cases Filed, 1998-2008



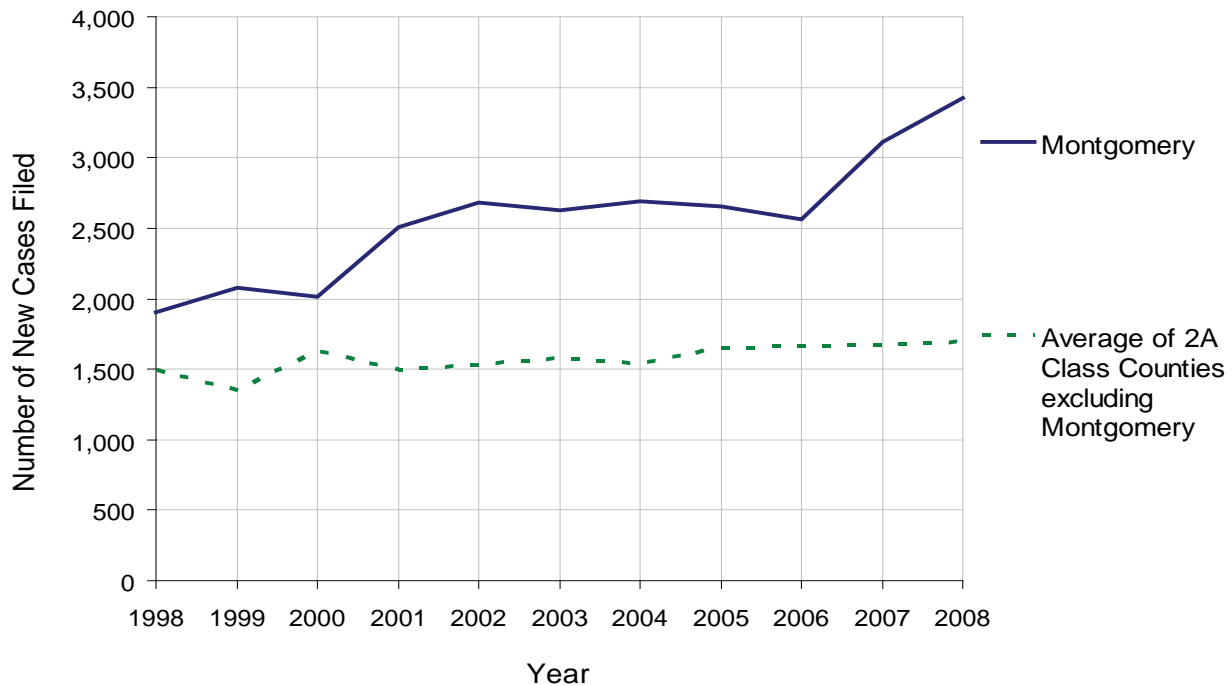
MONTGOMERY COUNTY

2008 Population Estimate: 778,048
 Class of County: 2A
 No. of Common Pleas Court Judgeships: 21



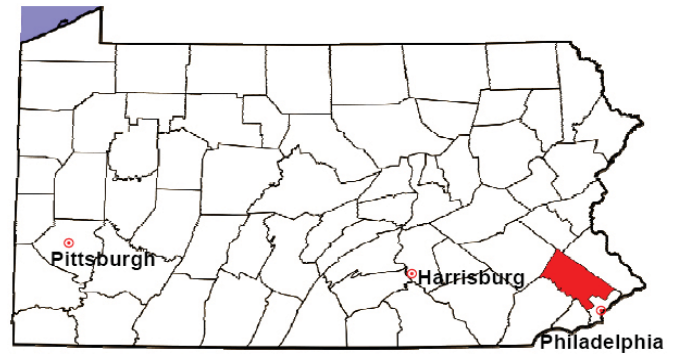
2008 Custody/Partial Custody/Visitation	No. of Petitions	%
Cases Pending 1/1/08	662	
New Cases Filed in '08	3,422	
Cases Available for Processing	4,084	
Processed By:		
Judge	1,428	39.7%
Non-Judicial Officer	1,725	48.0%
Other	441	12.3%
Cases Processed	3,594	100.0%
Cases Pending 12/31/08	490	

Custody/Partial Custody/Visitation New Cases Filed
 1998-2008



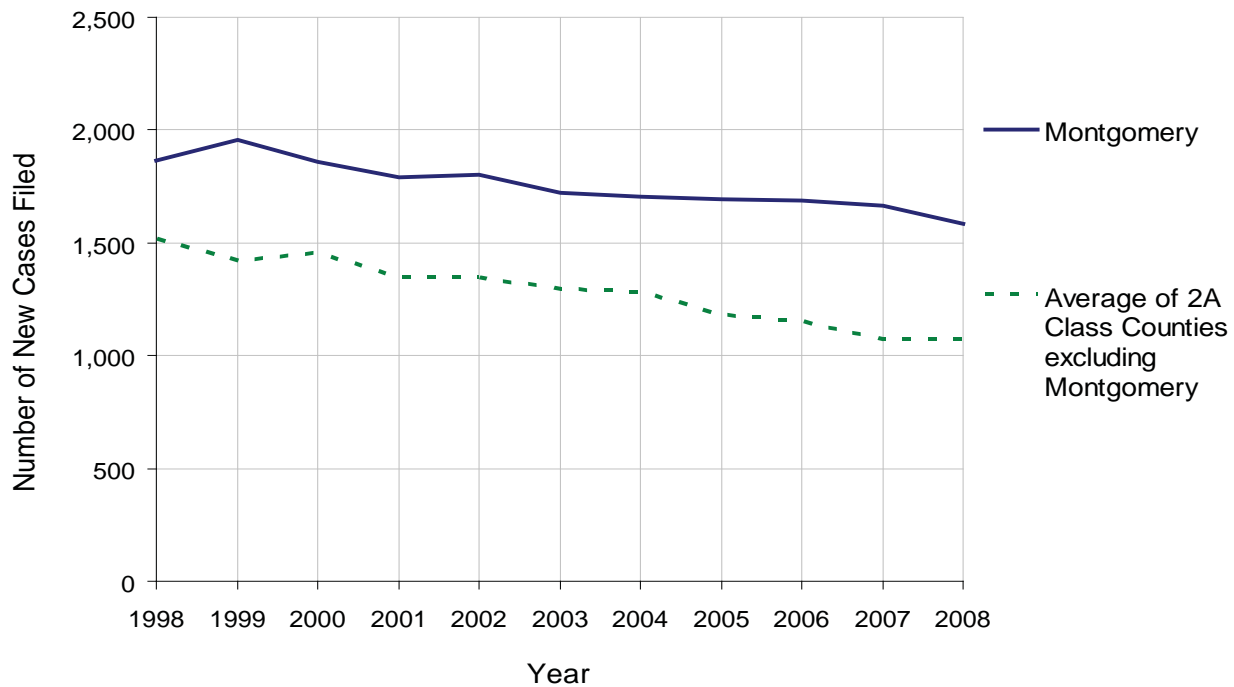
MONTGOMERY COUNTY

2008 Population Estimate: 778,048
 Class of County: 2A
 No. of Common Pleas Court Judgeships: 21



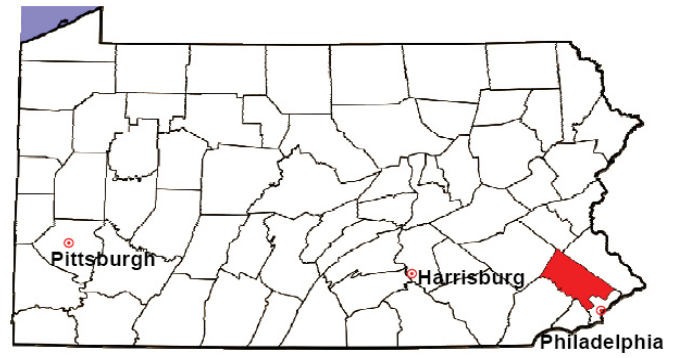
2008 Divorce	No. of Petitions	%
Cases Pending 1/1/08	2,707	
New Cases Filed in '08	1,582	
Cases Available for Processing	4,289	
Processed By:		
Contested Before a Judge	0	0.0%
Contested Before a Master	0	0.0%
Uncontested	1,589	100.0%
Other	0	0.0%
Cases Processed	1,589	100.0%
Cases Pending 12/31/08	2,700	

Divorce New Cases Filed, 1998-2008



MONTGOMERY COUNTY

2008 Population Estimate: 778,048
 Class of County: 2A
 No. of Common Pleas Court Judgeships: 21



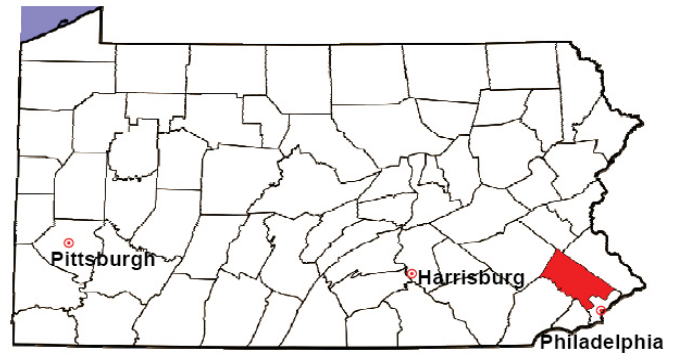
2008 Juvenile Dependency Abuse/Neglect	No. of Petitions	%
Cases Pending 1/1/08	6	
New Cases Filed in '08	164	
Cases Available for Processing	170	
Processed By:		
Judge	170	100.0%
Non-Judicial Officer	0	0.0%
Other	0	0.0%
Cases Processed	170	100.0%
Cases Pending 12/31/08	0	

Abuse/Neglect New Cases Filed, 2000-2008



MONTGOMERY COUNTY

2008 Population Estimate: 778,048
 Class of County: 2A
 No. of Common Pleas Court Judgeships: 21



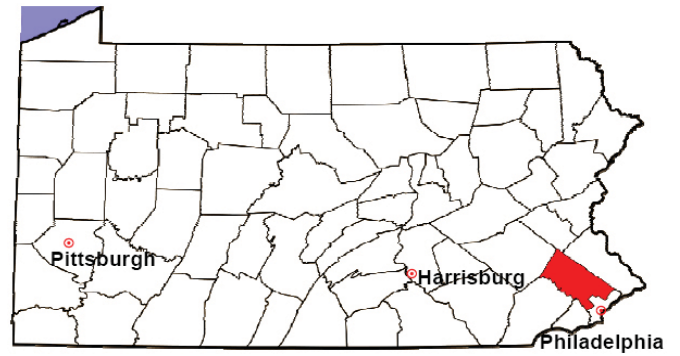
2008 Juvenile Dependency Status Offenses	No. of Petitions	%
Cases Pending 1/1/08	2	
New Cases Filed in '08	24	
Cases Available for Processing	26	
Processed By:		
Judge	26	100.0%
Non-Judicial Officer	0	0.0%
Other	0	0.0%
Cases Processed	26	100.0%
Cases Pending 12/31/08	0	

Status Offenses New Cases Filed, 2000-2008



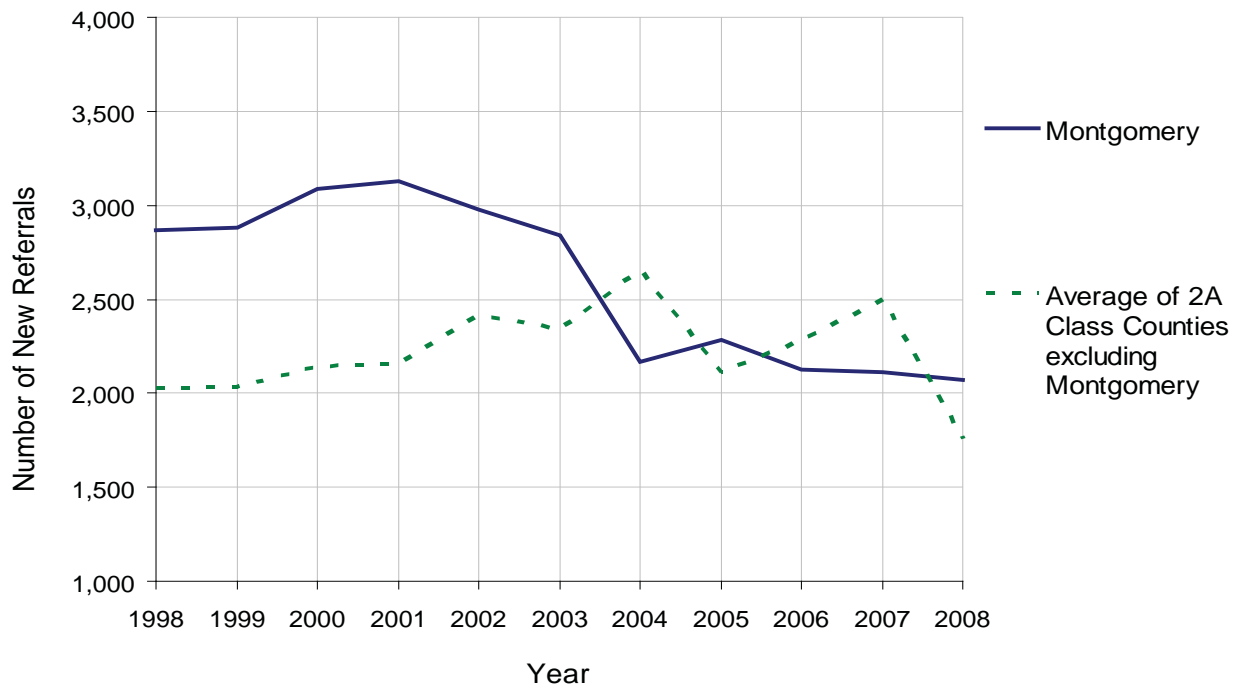
MONTGOMERY COUNTY

2008 Population Estimate: 778,048
 Class of County: 2A
 No. of Common Pleas Court Judgeships: 21



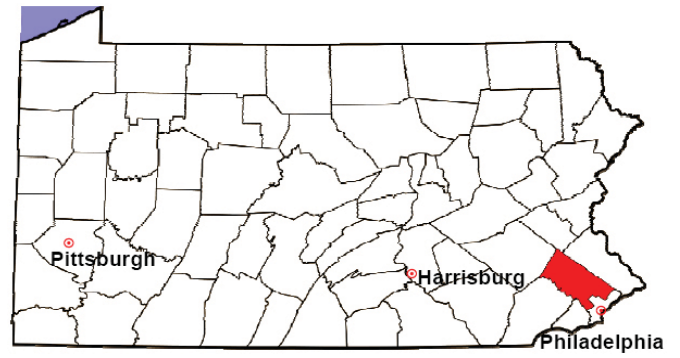
2008 Juvenile Delinquency	No. of Referrals	%
Cases Pending 1/1/08	388	
New Referrals in '08	2,071	
Cases Available for Processing	2,459	
Processed By:		
Judge	1,533	73.7%
Non-Judicial Officer	472	22.7%
Other	75	3.6%
Cases Processed	2,080	100.0%
Cases Pending 12/31/08	379	

Juvenile Delinquency New Referrals, 1998-2008



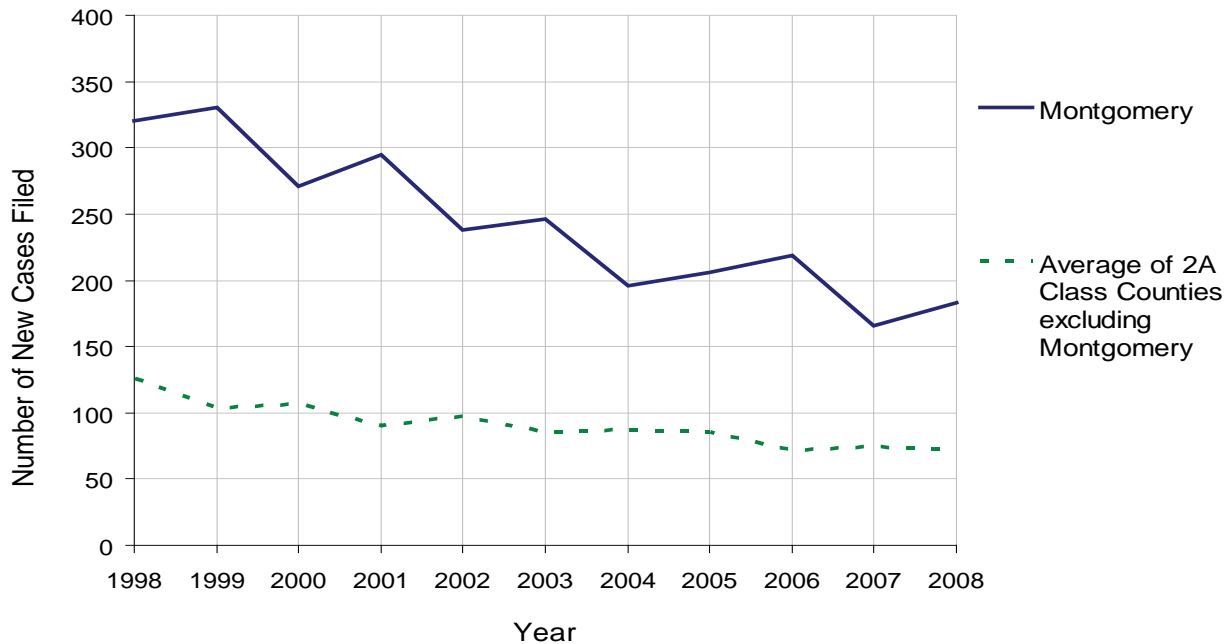
MONTGOMERY COUNTY

2008 Population Estimate: 778,048
 Class of County: 2A
 No. of Common Pleas Court Judgeships: 21



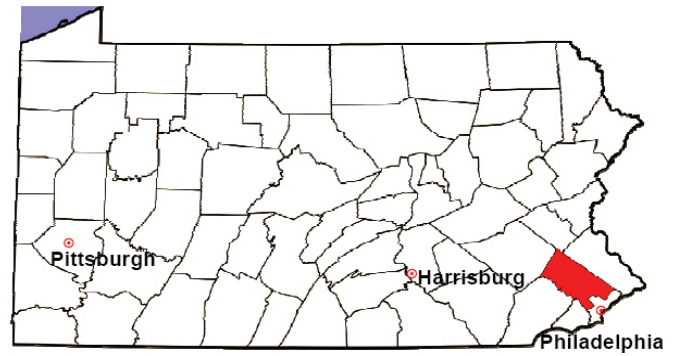
2008 Accounts	No. of Accounts	%
Cases Pending 1/1/08	180	
New Cases Filed in '08	183	
Cases Available for Processing	363	
Processed By:		
Contested before a Judge	51	28.3%
Contested before a Non-Judicial Officer	0	0.0%
Uncontested	129	71.7%
Other	0	0.0%
Cases Processed	180	100.0%
Cases Pending 12/31/08	183	

Accounts New Cases Filed, 1998-2008



MONTGOMERY COUNTY

2008 Population Estimate: 778,048
 Class of County: 2A
 No. of Common Pleas Court Judgeships: 21

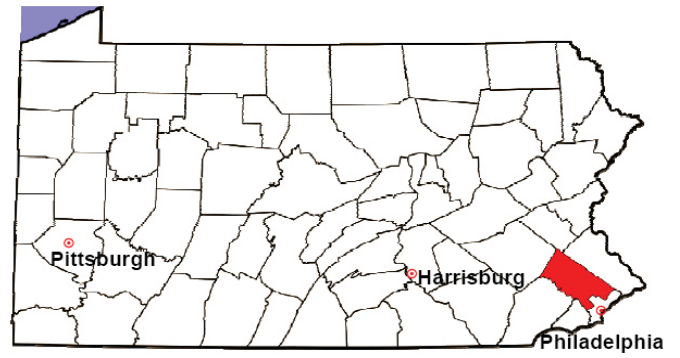


2008 Adoptions		No. of Cases	%
Cases Pending 1/1/08		13	
New Cases Filed in '08		292	
Cases Available for Processing		305	
Processed By:			
Contested before a Judge	Granted	0	0.0%
	Denied	0	0.0%
Uncontested	Granted	295	100.0%
	Denied	0	0.0%
Other		0	0.0%
Cases Processed		295	100.0%
Cases Pending 12/31/08		10	

Note: Prior to 2008, each petition was counted as one new case, regardless of the number of children listed on the petition. Starting in 2008, each child listed on a petition is counted as a separate case. Therefore, statistics for 2008 should not be compared with those for previous years.

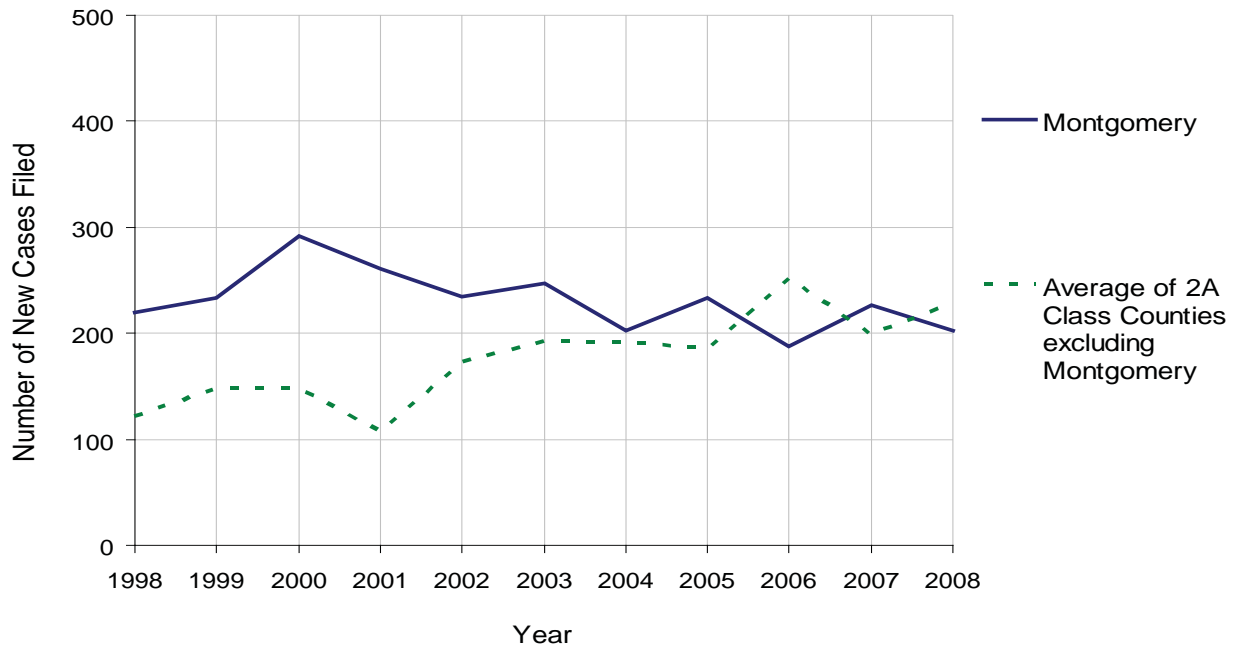
MONTGOMERY COUNTY

2008 Population Estimate: 778,048
 Class of County: 2A
 No. of Common Pleas Court Judgeships: 21



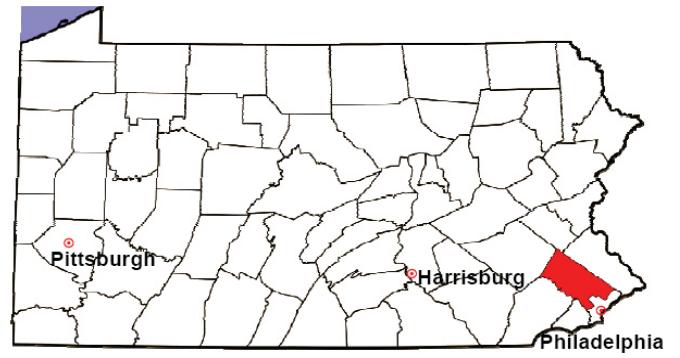
2008 Relinquishments/Terminations	No. of Petitions	%
Cases Pending 1/1/08	18	
New Cases Filed in '08	203	
Cases Available for Processing	221	
Processed By:		
Contested before a Judge	34	15.5%
Uncontested	185	84.5%
Other	0	0.0%
Cases Processed	219	100.0%
Cases Pending 12/31/08	2	

Relinquishments/Terminations New Cases Filed, 1998-2008



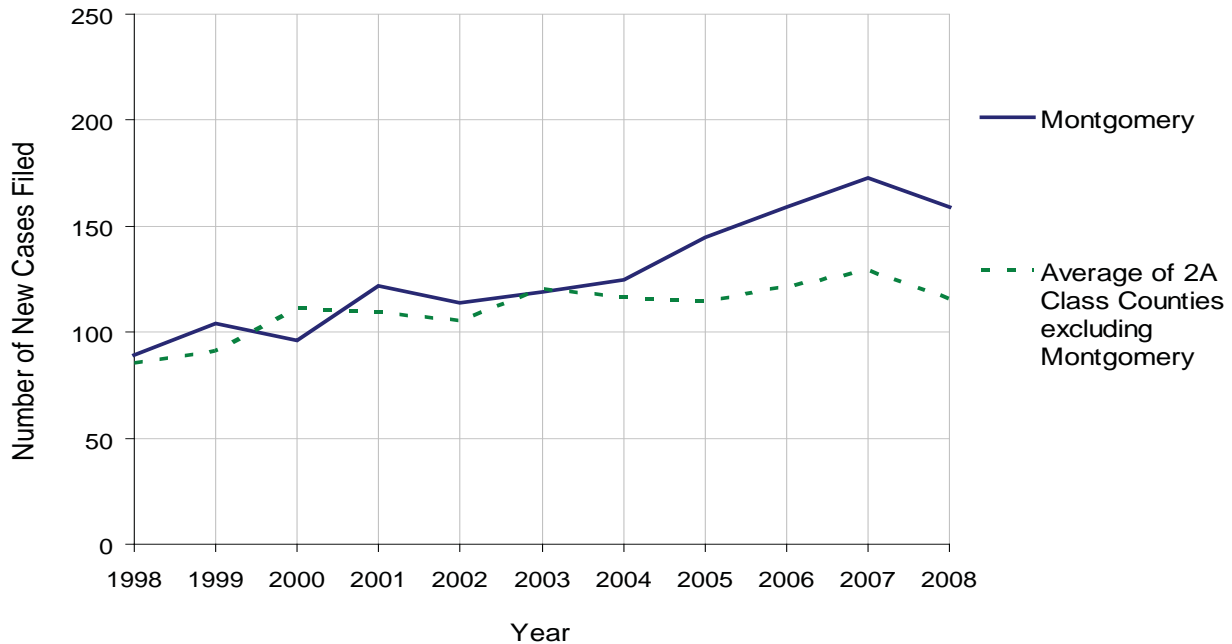
MONTGOMERY COUNTY

2008 Population Estimate: 778,048
 Class of County: 2A
 No. of Common Pleas Court Judgeships: 21



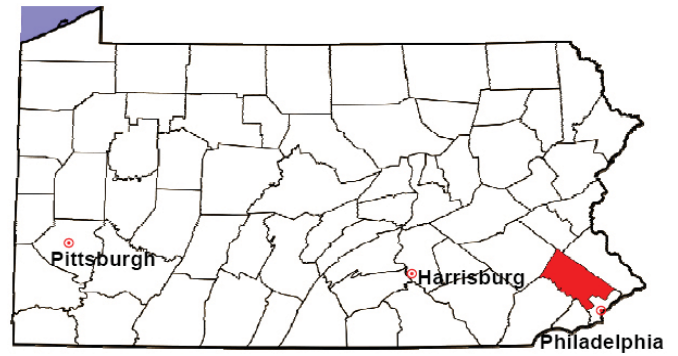
2008 Appointment of Guardians	No. of Petitions	%
Cases Pending 1/1/08	145	
New Cases Filed in '08	159	
Cases Available for Processing	304	
Processed By:		
Contested before a Judge	16	9.2%
Uncontested	153	87.9%
Other	5	2.9%
Cases Processed	174	100.0%
Cases Pending 12/31/08	130	

Appointment of Guardians New Cases Filed, 1998-2008



MONTGOMERY COUNTY

2008 Population Estimate: 778,048
 Class of County: 2A
 No. of Common Pleas Court Judgeships: 21



2008 Jury Activity & Performance Measures		
A. Juror Days		13,400
B. Number Sent to Voir Dire		8,263
	Voir Dire Attendance Rate $(B/A * 100)$	61.7%
C. Number of Voir Dires Started		162
	Juror Days Per Voir Dire Starts (A/C)	83
D. Number of Jurors Selected		1,453
	Juror Selection Rate $(D/B * 100)$	17.6%
E. Number of Jury Trials Started		103
	Juror Days Per Trial Starts (A/E)	130
	Number of Voir Dires Not Resulting in Trial $(C-E)$	59
	Percent Voir Dires Not Resulting in Trial $(C-E)/C * 100$	36.4%
F. Pool Days		142
G. Zero Panel Days		35
	Percent Zero Panel Days $(G/F * 100)$	24.6%
H. Total Juror Fees Incurred		\$246,761
	Average Juror Fees Per Trial (H/E)	\$2,396

Average Juror Fees Per Trial, 1998-2008

