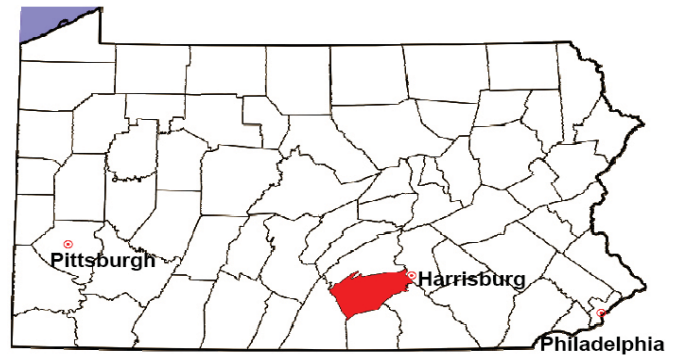


CUMBERLAND COUNTY

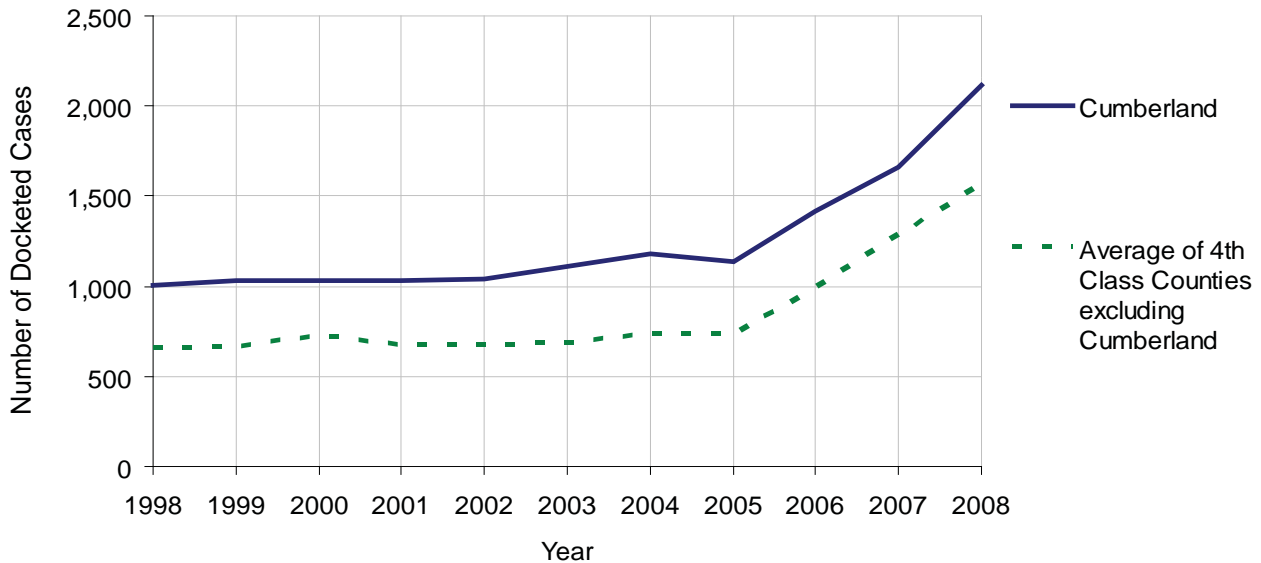
2008 Population Estimate: 229,361
 Class of County: 4th
 No. of Common Pleas Court Judgeships: 5



2008 Civil		Civil Action		
Docketed Cases		2,119		
Arbitrated Cases		47		
Trial-Ready Cases:		Civil Action	Other	Total
Cases Pending 1/1/08		26	0	26
Became Trial Ready in '08		70	0	70
Restored to Trial List		14	0	14
Appeals from Arbitration		11	0	11
Cases Available for Trial		121	0	121
Disposed By:				
Settlement		27	0	27
Non-Jury Trial		6	0	6
Jury Trial		20	0	20
Stricken from Trial List		23	0	23
Other		30	0	30
Cases Disposed		106	0	106
Cases Pending 12/31/08		15	0	15

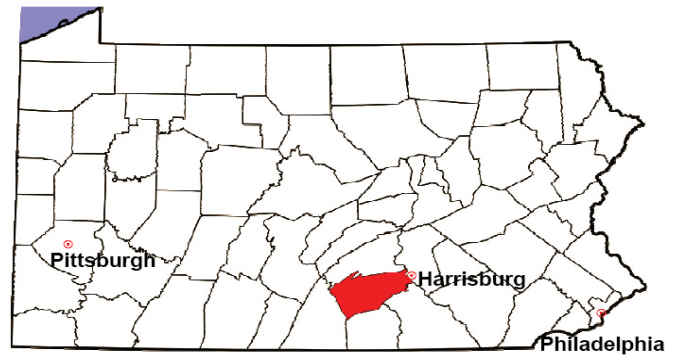
Age of Trial-Ready Cases as of 12/31/08 (Civil Action Only)		
0-6 months	11	73%
7-12 months	4	27%
13-18 months	0	0%
19-24 months	0	0%
25-30 months	0	0%
31-36 months	0	0%
Over 36 months	0	0%
Total	15	100%

Docketed Cases, 1998-2008



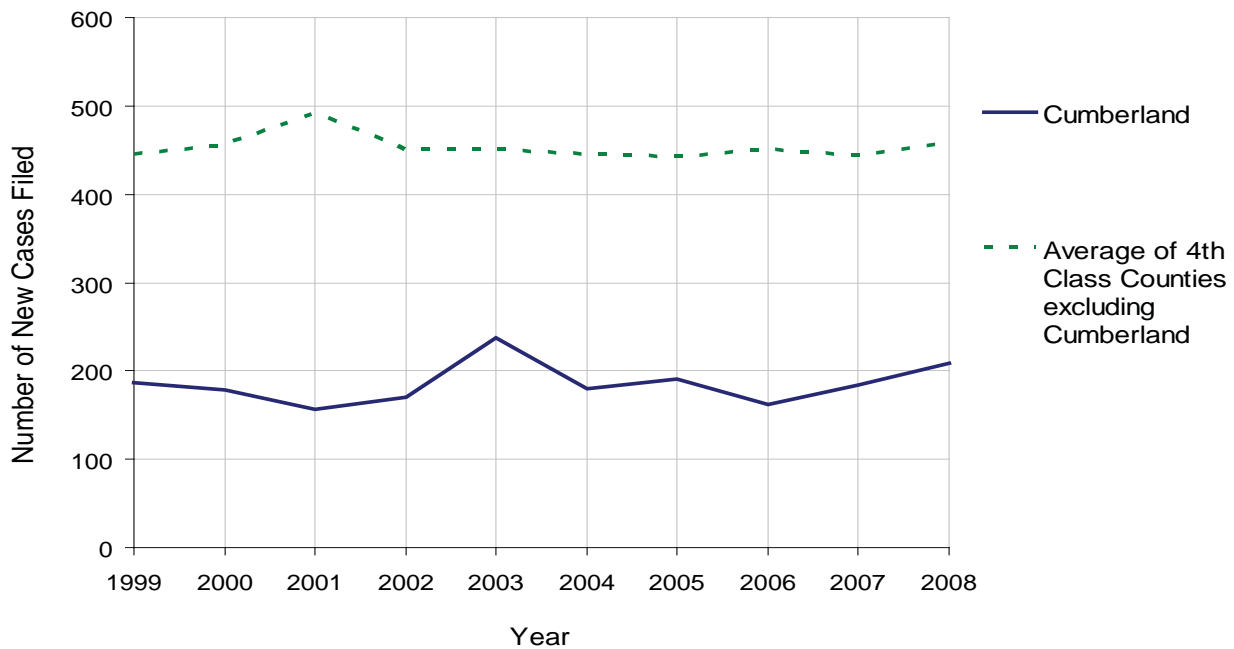
CUMBERLAND COUNTY

2008 Population Estimate: 229,361
 Class of County: 4th
 No. of Common Pleas Court Judgeships: 5



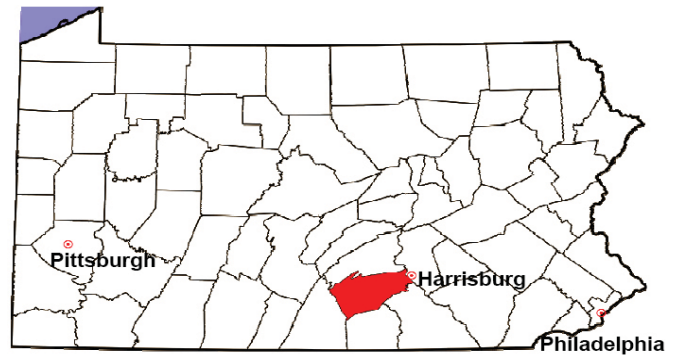
2008 Protection From Abuse	No. of Petitions	%
Cases Pending 1/1/08	7	
New Cases Filed in '08	209	
Cases Available for Processing	216	
Processed By:		
Final Order After Hearing	102	55.7%
Final Order by Stipulation or Agreement	44	24.0%
Dismissal	3	1.6%
Withdrawal	34	18.6%
Other	0	0.0%
Cases Processed	183	100.0%
Cases Pending 12/31/08	33	

PFA New Cases Filed, 1999-2008



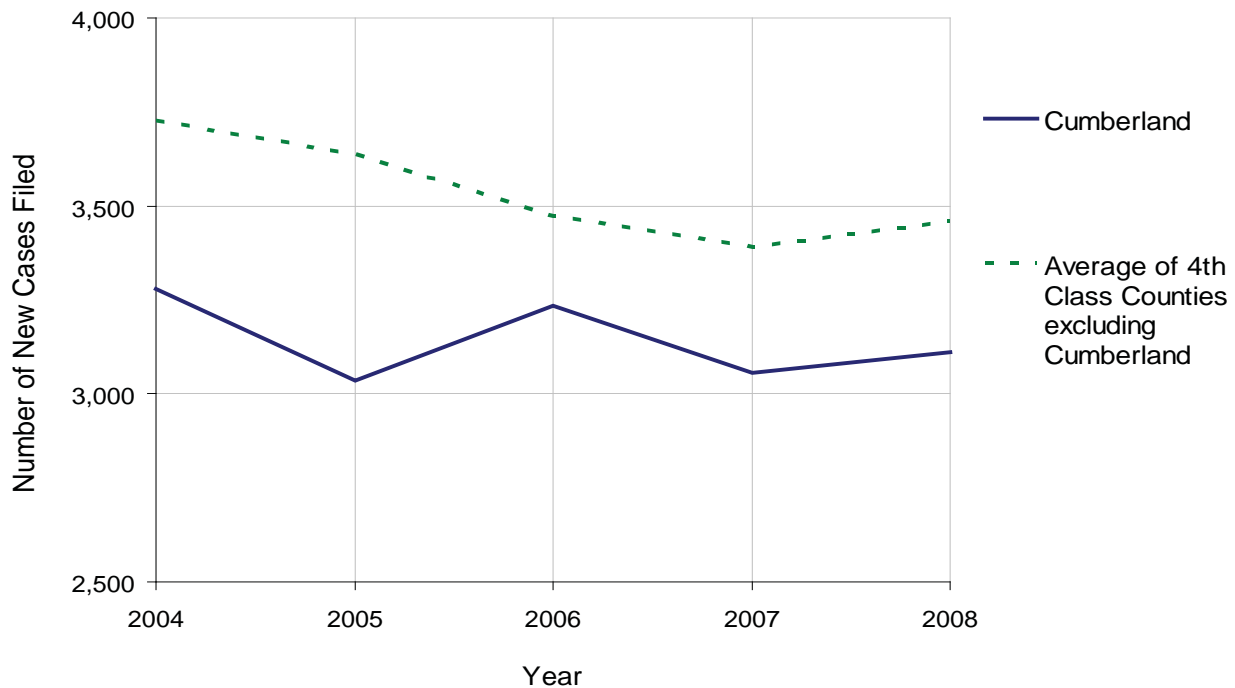
CUMBERLAND COUNTY

2008 Population Estimate: 229,361
 Class of County: 4th
 No. of Common Pleas Court Judgeships: 5



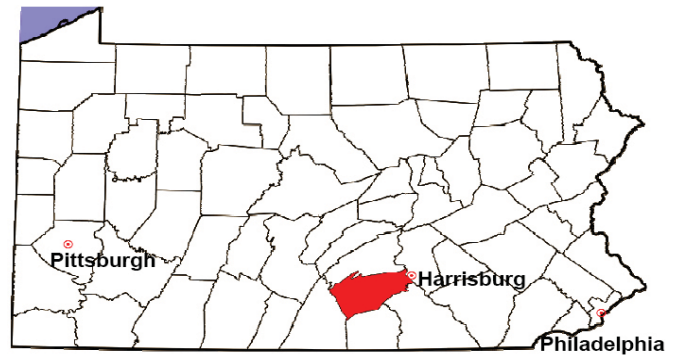
2008 Spousal & Child Support	No. of Petitions	%
Cases Pending 1/1/08	388	
New Cases Filed in '08	3,110	
Dockets Transferred In (+)	36	
Dockets Transferred Out (-)	30	
Cases Available for Processing	3,504	
Processed By:		
Judge	48	1.6%
Intake Officer	2,832	92.0%
Hearing Officer	197	6.4%
Other	1	0.0%
Cases Processed	3,078	100.0%
Cases Pending 12/31/08	426	

Spousal & Child Support New Cases Filed, 1998-2008



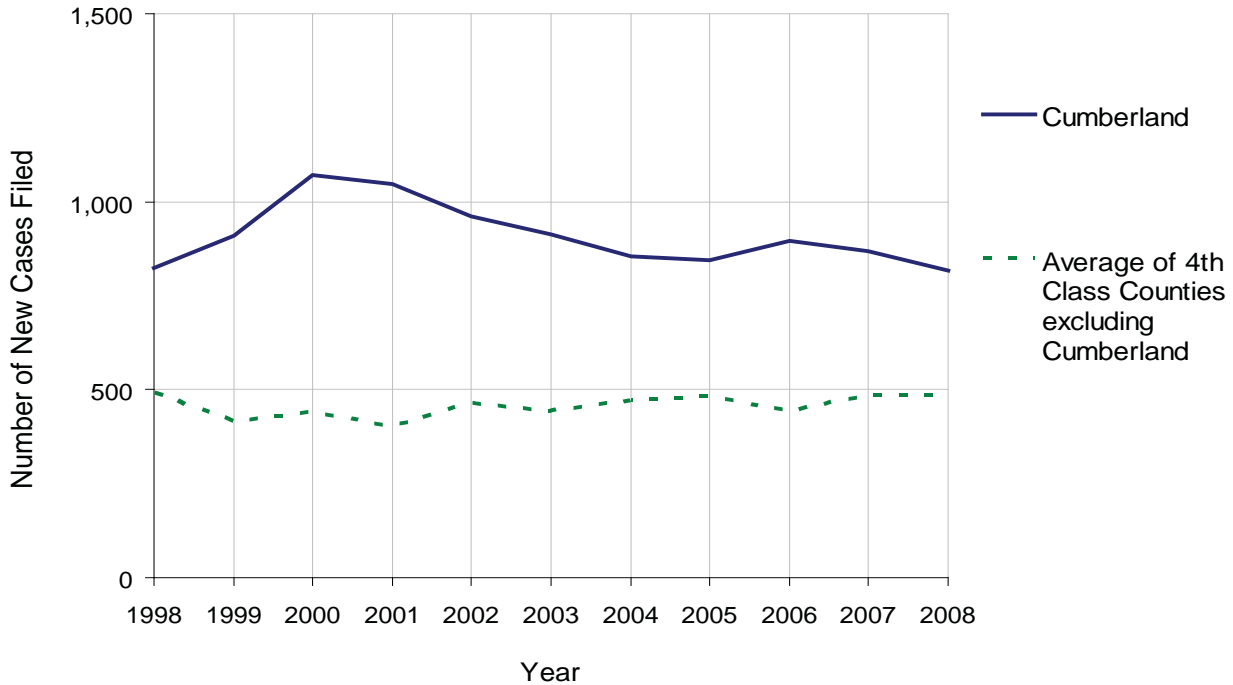
CUMBERLAND COUNTY

2008 Population Estimate: 229,361
 Class of County: 4th
 No. of Common Pleas Court Judgeships: 5



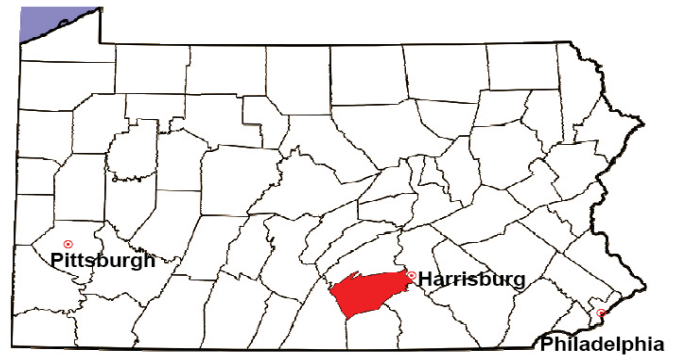
2008 Custody/Partial Custody/Visitation	No. of Petitions	%
Cases Pending 1/1/08	193	
New Cases Filed in '08	817	
Cases Available for Processing	1,010	
Processed By:		
Judge	151	19.5%
Non-Judicial Officer	378	48.9%
Other	244	31.6%
Cases Processed	773	100.0%
Cases Pending 12/31/08	237	

Custody/Partial Custody/Visitation New Cases Filed
 1998-2008



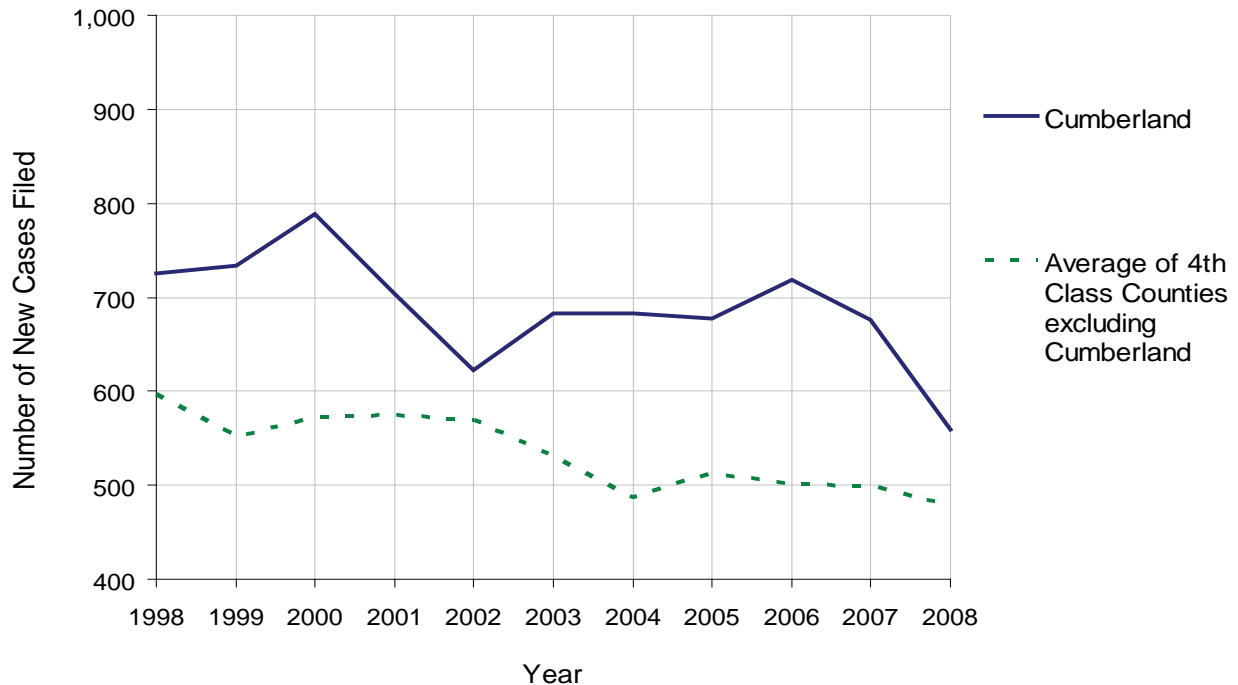
CUMBERLAND COUNTY

2008 Population Estimate: 229,361
 Class of County: 4th
 No. of Common Pleas Court Judgeships: 5



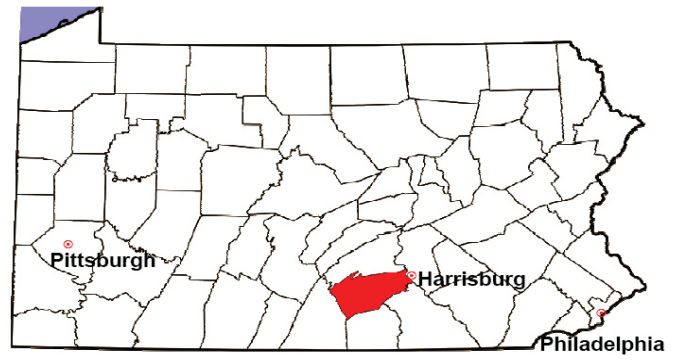
2008 Divorce	No. of Petitions	%
Cases Pending 1/1/08	1,285	
New Cases Filed in '08	559	
Cases Available for Processing	1,844	
Processed By:		
Contested Before a Judge	4	0.6%
Contested Before a Master	8	1.2%
Uncontested	542	81.3%
Other	113	16.9%
Cases Processed	667	100.0%
Cases Pending 12/31/08	1,177	

Divorce New Cases Filed, 1998-2008



CUMBERLAND COUNTY

2008 Population Estimate: 229,361
 Class of County: 4th
 No. of Common Pleas Court Judgeships: 5



2008 Juvenile Dependency Abuse/Neglect	No. of Petitions	%
Cases Pending 1/1/08	3	
New Cases Filed in '08	129	
Cases Available for Processing	132	
Processed By:		
Judge	4	3.1%
Non-Judicial Officer	125	96.9%
Other	0	0.0%
Cases Processed	129	100.0%
Cases Pending 12/31/08	3	

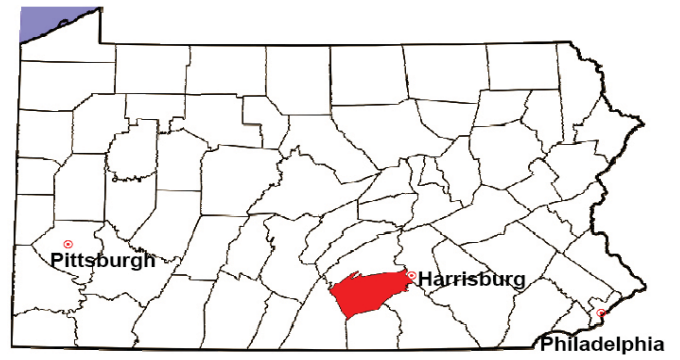
Abuse/Neglect New Cases Filed, 2000-2008



Note: 2001 data for Cumberland County are not available.

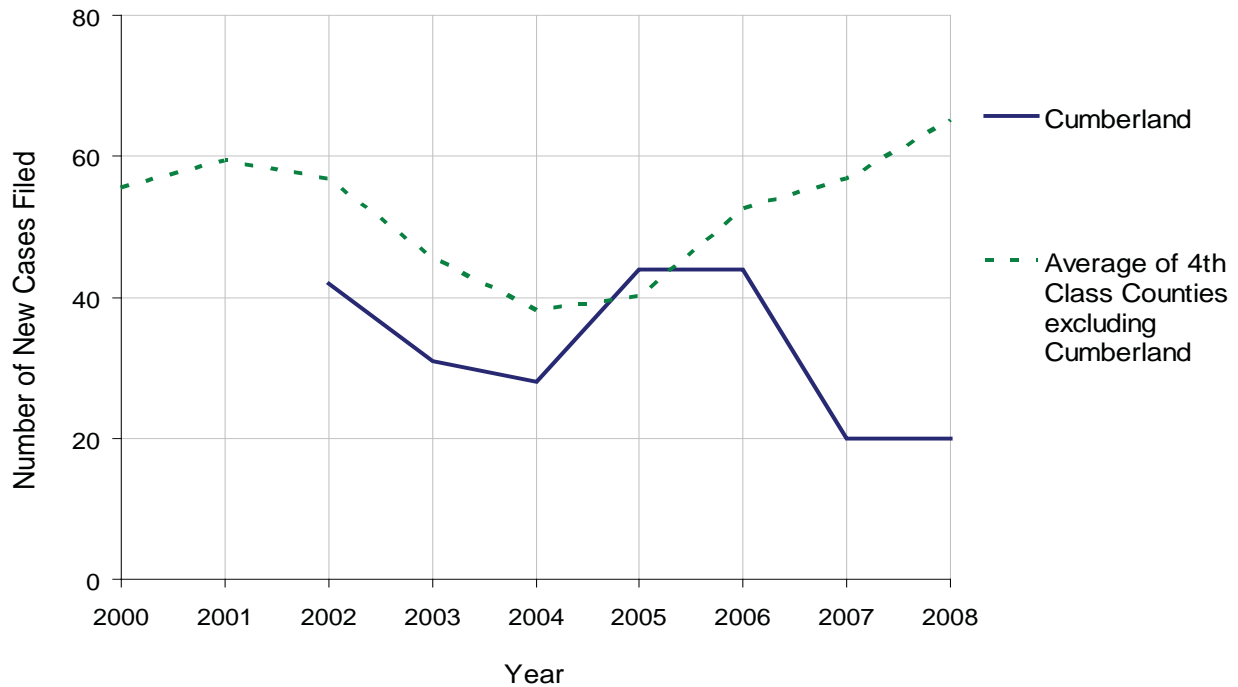
CUMBERLAND COUNTY

2008 Population Estimate: 229,361
 Class of County: 4th
 No. of Common Pleas Court Judgeships: 5



2008 Juvenile Dependency Status Offenses	No. of Petitions	%
Cases Pending 1/1/08	0	
New Cases Filed in '08	20	
Cases Available for Processing	20	
Processed By:		
Judge	0	0.0%
Non-Judicial Officer	20	100.0%
Other	0	0.0%
Cases Processed	20	100.0%
Cases Pending 12/31/08	0	

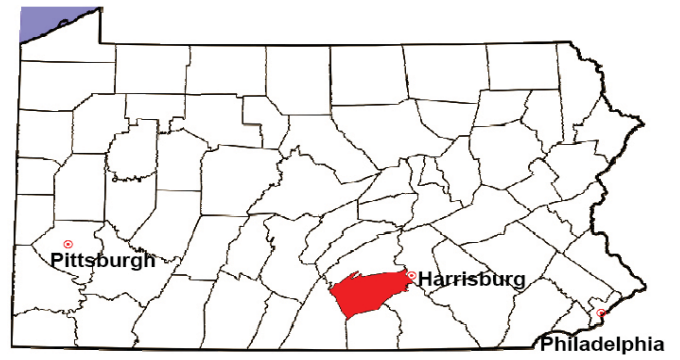
Status Offenses New Cases Filed, 2000-2008



Note: 2000 and 2001 data for Cumberland County are not available.

CUMBERLAND COUNTY

2008 Population Estimate: 229,361
 Class of County: 4th
 No. of Common Pleas Court Judgeships: 5



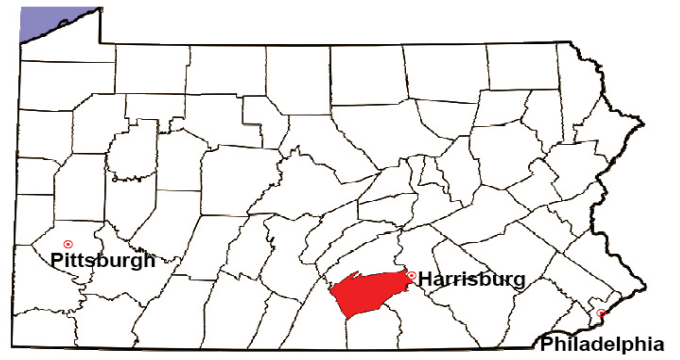
2008 Juvenile Delinquency	No. of Referrals	%
Cases Pending 1/1/08	113	
New Referrals in '08	590	
Cases Available for Processing	703	
Processed By:		
Judge	131	22.2%
Non-Judicial Officer	417	70.7%
Other	42	7.1%
Cases Processed	590	100.0%
Cases Pending 12/31/08	113	

Juvenile Delinquency New Referrals, 1998-2008



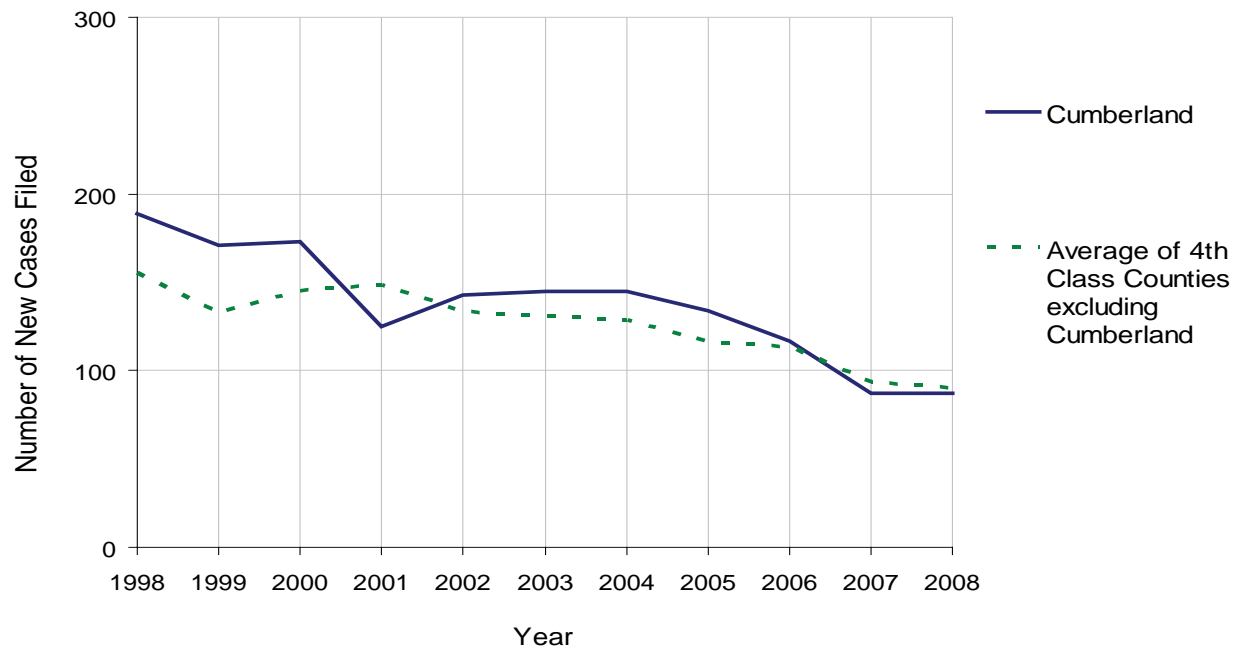
CUMBERLAND COUNTY

2008 Population Estimate: 229,361
 Class of County: 4th
 No. of Common Pleas Court Judgeships: 5



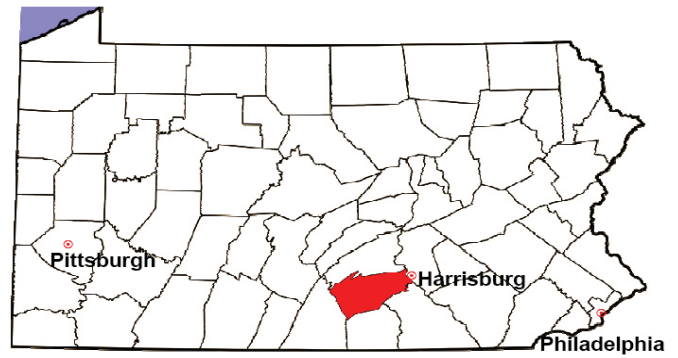
2008 Accounts	No. of Accounts	%
Cases Pending 1/1/08	19	
New Cases Filed in '08	87	
Cases Available for Processing	106	
Processed By:		
Contested before a Judge	3	3.5%
Contested before a Non-Judicial Officer	0	0.0%
Uncontested	79	92.9%
Other	3	3.5%
Cases Processed	85	100.0%
Cases Pending 12/31/08	21	

Accounts New Cases Filed, 1998-2008



CUMBERLAND COUNTY

2008 Population Estimate: 229,361
 Class of County: 4th
 No. of Common Pleas Court Judgeships: 5

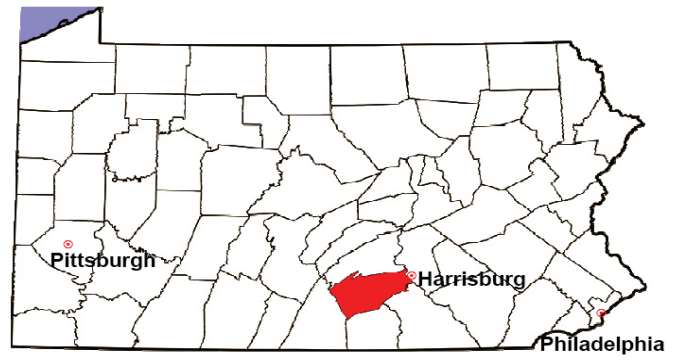


2008 Adoptions		No. of Cases	%
Cases Pending 1/1/08		53	
New Cases Filed in '08		123	
Cases Available for Processing		176	
Processed By:			
Contested before a Judge	Granted	3	2.7%
	Denied	0	0.0%
Uncontested	Granted	107	97.3%
	Denied	0	0.0%
Other		0	0.0%
Cases Processed		110	100.0%
Cases Pending 12/31/08		66	

Note: Prior to 2008, each petition was counted as one new case, regardless of the number of children listed on the petition. Starting in 2008, each child listed on a petition is counted as a separate case. Therefore, statistics for 2008 should not be compared with those for previous years.

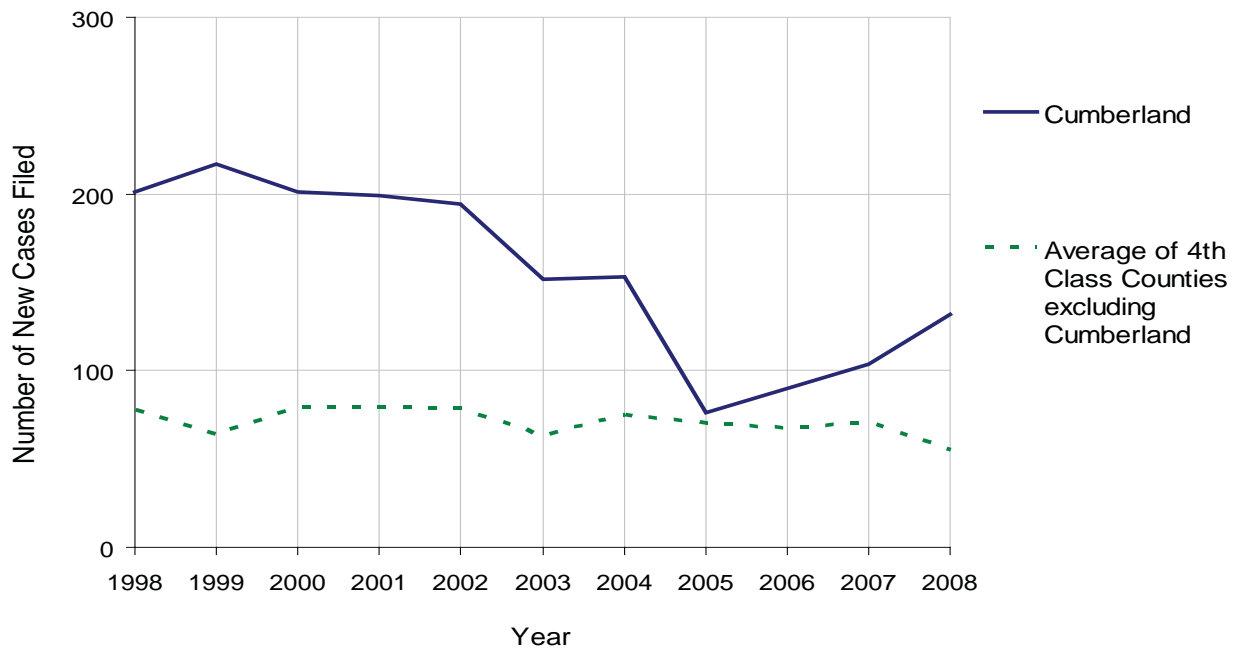
CUMBERLAND COUNTY

2008 Population Estimate: 229,361
 Class of County: 4th
 No. of Common Pleas Court Judgeships: 5



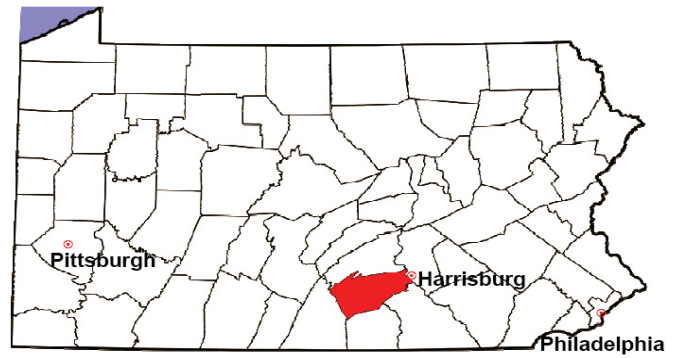
2008 Relinquishments/Terminations	No. of Petitions	%
Cases Pending 1/1/08	28	
New Cases Filed in '08	132	
Cases Available for Processing	160	
Processed By:		
Contested before a Judge	8	7.0%
Uncontested	88	77.2%
Other	18	15.8%
Cases Processed	114	100.0%
Cases Pending 12/31/08	46	

Relinquishments/Terminations New Cases Filed, 1998-2008



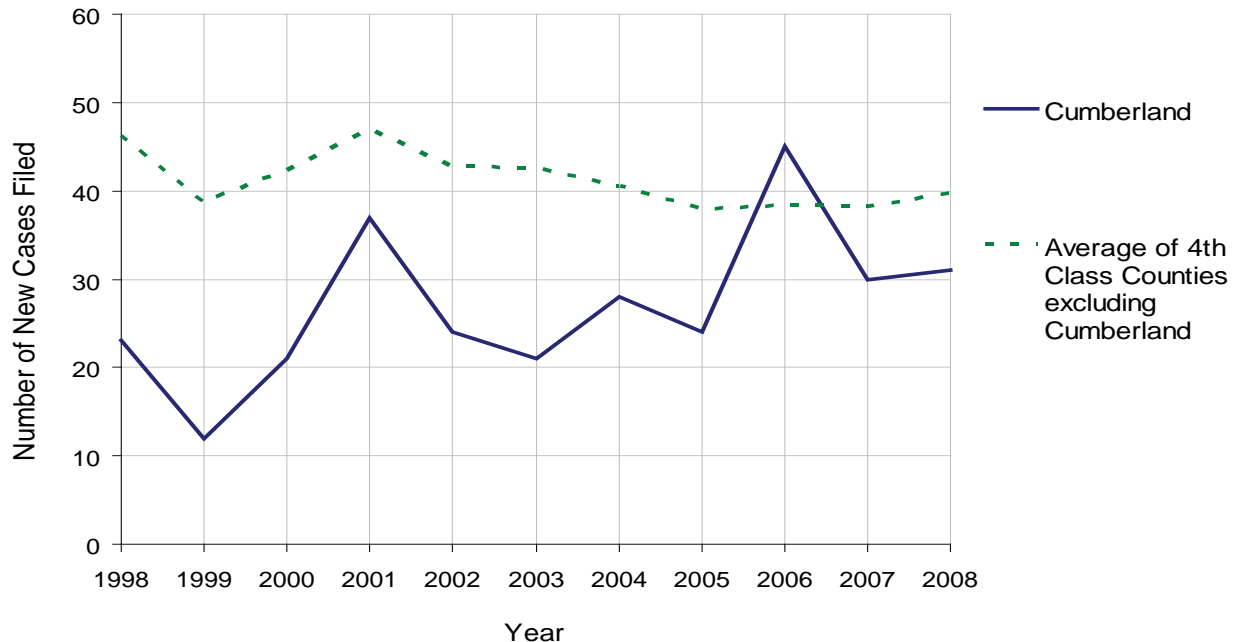
CUMBERLAND COUNTY

2008 Population Estimate: 229,361
 Class of County: 4th
 No. of Common Pleas Court Judgeships: 5



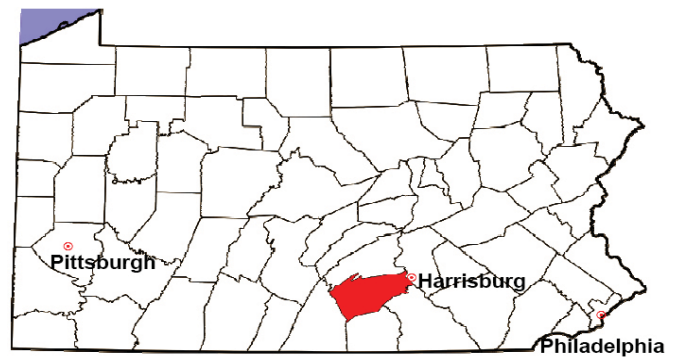
2008 Appointment of Guardians	No. of Petitions	%
Cases Pending 1/1/08	5	
New Cases Filed in '08	31	
Cases Available for Processing	36	
Processed By:		
Contested before a Judge	4	12.1%
Uncontested	23	69.7%
Other	6	18.2%
Cases Processed	33	100.0%
Cases Pending 12/31/08	3	

Appointment of Guardians New Cases Filed, 1998-2008



CUMBERLAND COUNTY

2008 Population Estimate: 229,361
 Class of County: 4th
 No. of Common Pleas Court Judgeships: 5



2008 Jury Activity & Performance Measures		
A. Juror Days		2,682
B. Number Sent to Voir Dire		2,810
	Voir Dire Attendance Rate $(B/A * 100)$	104.8%
C. Number of Voir Dires Started		73
	Juror Days Per Voir Dire Starts (A/C)	37
D. Number of Jurors Selected		1,002
	Juror Selection Rate $(D/B * 100)$	35.7%
E. Number of Jury Trials Started		72
	Juror Days Per Trial Starts (A/E)	37
	Number of Voir Dires Not Resulting in Trial $(C-E)$	1
	Percent Voir Dires Not Resulting in Trial $(C-E)/C * 100$	1.4%
F. Pool Days		29
G. Zero Panel Days		2
	Percent Zero Panel Days $(G/F * 100)$	6.9%
H. Total Juror Fees Incurred		\$58,341
	Average Juror Fees Per Trial (H/E)	\$810

Average Juror Fees Per Trial, 1998-2008

