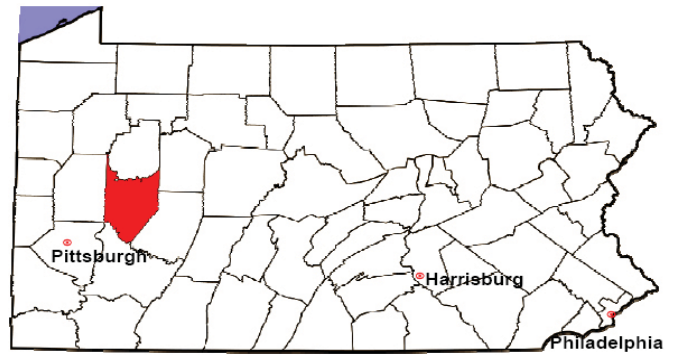


ARMSTRONG COUNTY

2008 Population Estimate: 68,790

Class of County: 6th

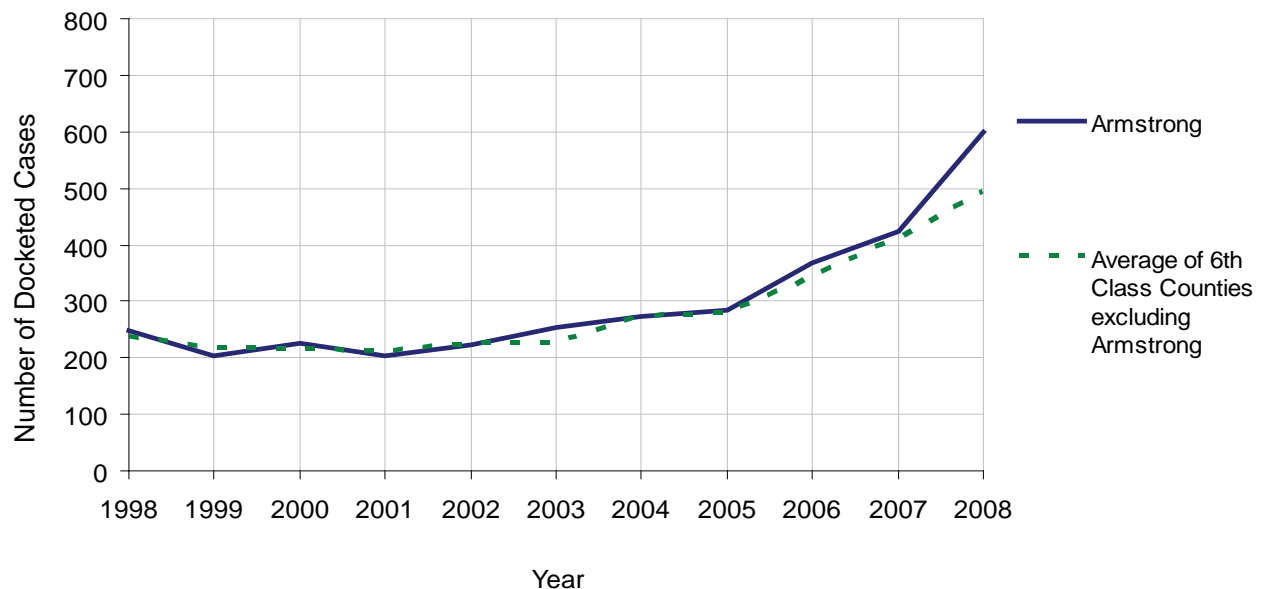
No. of Common Pleas Court Judgeships: 2



2008 Civil		Civil Action		
Docketed Cases		598		
Arbitrated Cases		29		
Trial-Ready Cases:		Civil Action	Other	Total
Cases Pending 1/1/08		27	9	36
Became Trial Ready in '08		17	5	22
Restored to Trial List		3	0	3
Appeals from Arbitration		7	0	7
Cases Available for Trial		54	14	68
Disposed By:				
Settlement		13	2	15
Non-Jury Trial		2	2	4
Jury Trial		1	1	2
Stricken from Trial List		1	1	2
Other		4	1	5
Cases Disposed		21	7	28
Cases Pending 12/31/08		33	7	40

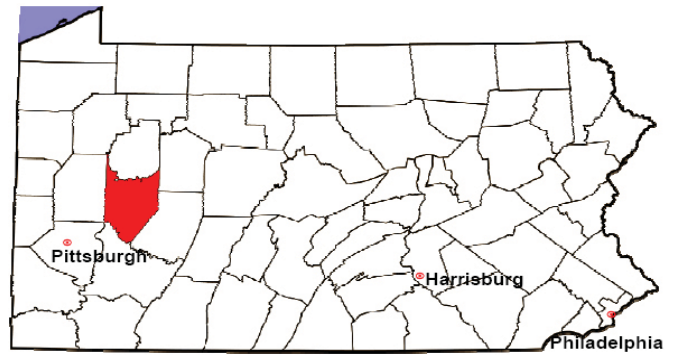
Age of Trial-Ready Cases as of 12/31/08 (Civil Action Only)		
0-6 months	14	42%
7-12 months	4	12%
13-18 months	7	21%
19-24 months	3	9%
25-30 months	2	6%
31-36 months	0	0%
Over 36 months	3	9%
Total	33	100%

Docketed Cases, 1998-2008



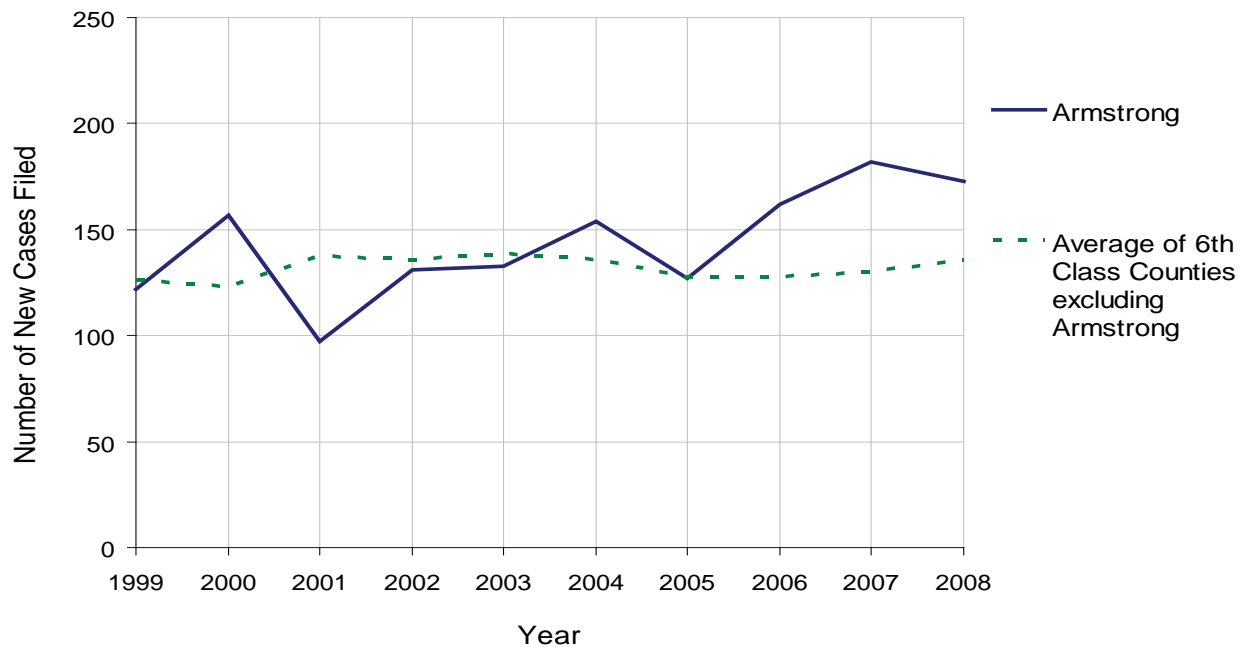
ARMSTRONG COUNTY

2008 Population Estimate: 68,790
 Class of County: 6th
 No. of Common Pleas Court Judgeships: 2



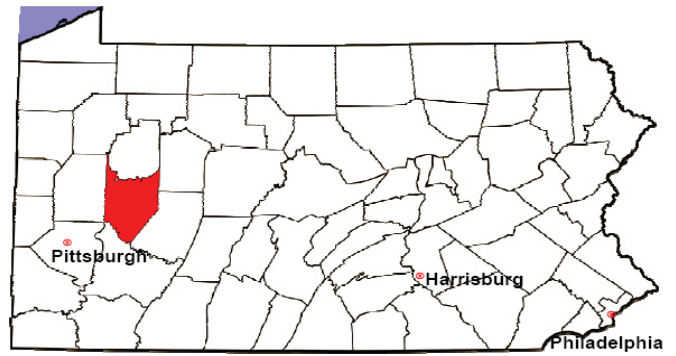
2008 Protection From Abuse	No. of Petitions	%
Cases Pending 1/1/08	24	
New Cases Filed in '08	173	
Cases Available for Processing	197	
Processed By:		
Final Order After Hearing	31	18.3%
Final Order by Stipulation or Agreement	70	41.4%
Dismissal	26	15.4%
Withdrawal	21	12.4%
Other	21	12.4%
Cases Processed	169	100.0%
Cases Pending 12/31/08	28	

PFA New Cases Filed, 1999-2008



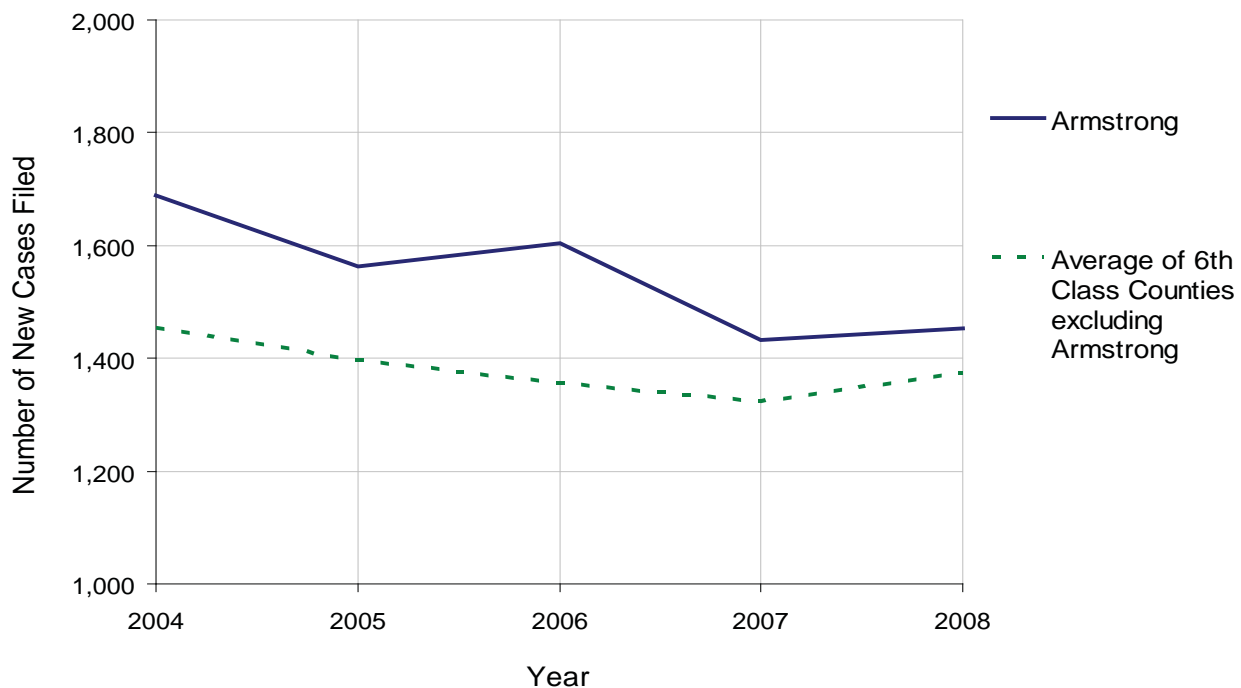
ARMSTRONG COUNTY

2008 Population Estimate: 68,790
 Class of County: 6th
 No. of Common Pleas Court Judgeships: 2



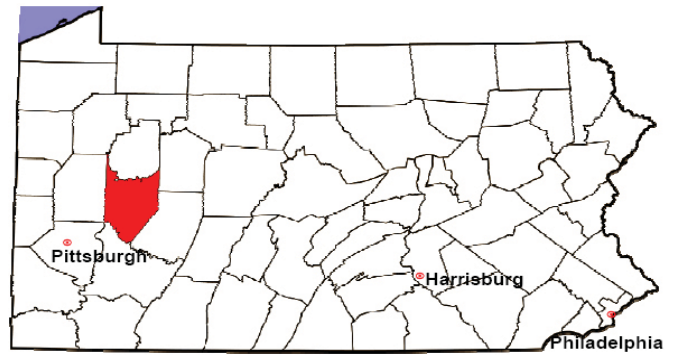
2008 Spousal & Child Support	No. of Petitions	%
Cases Pending 1/1/08	163	
New Cases Filed in '08	1,453	
Dockets Transferred In (+)	19	
Dockets Transferred Out (-)	9	
Cases Available for Processing	1,626	
Processed By:		
Judge	18	1.2%
Intake Officer	1,316	91.1%
Hearing Officer	111	7.7%
Other	0	0.0%
Cases Processed	1,445	100.0%
Cases Pending 12/31/08	181	

Spousal & Child Support New Cases Filed, 1998-2008



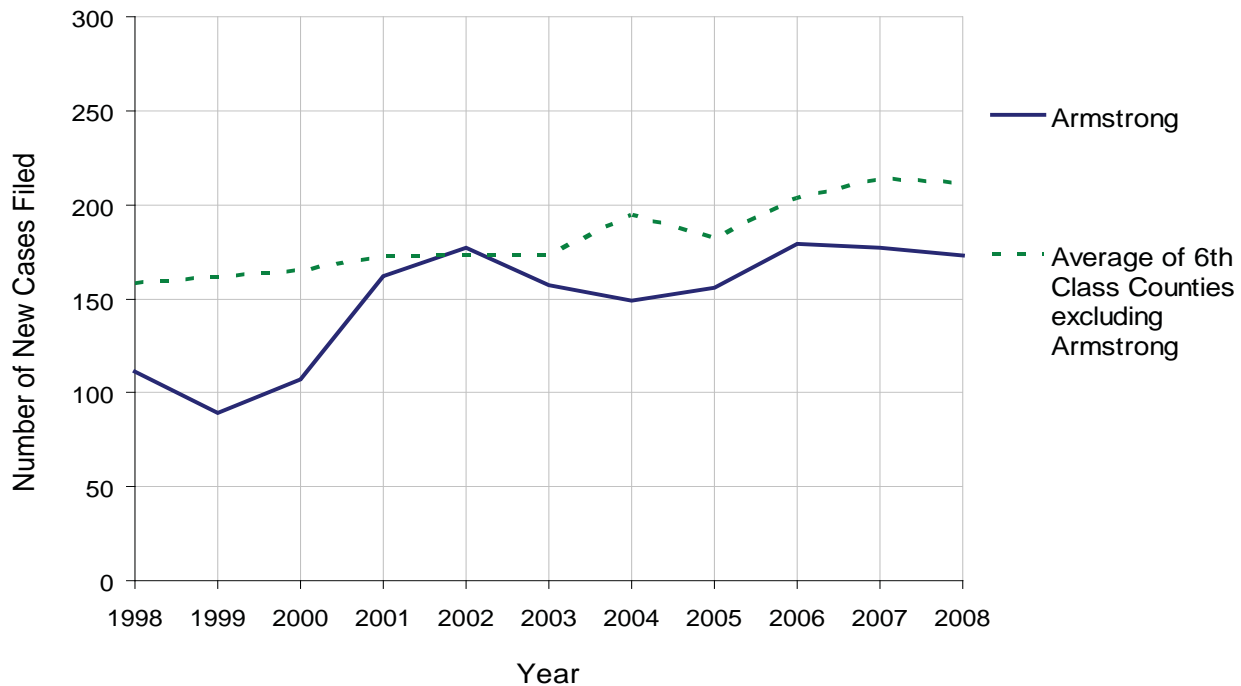
ARMSTRONG COUNTY

2008 Population Estimate: 68,790
 Class of County: 6th
 No. of Common Pleas Court Judgeships: 2



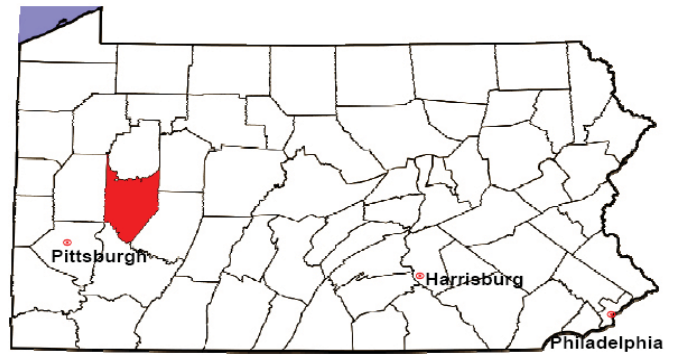
2008 Custody/Partial Custody/Visitation	No. of Petitions	%
Cases Pending 1/1/08	137	
New Cases Filed in '08	173	
Cases Available for Processing	310	
Processed By:		
Judge	16	7.5%
Non-Judicial Officer	14	6.6%
Other	183	85.9%
Cases Processed	213	100.0%
Cases Pending 12/31/08	97	

Custody/Partial Custody/Visitation New Cases Filed
 1998-2008



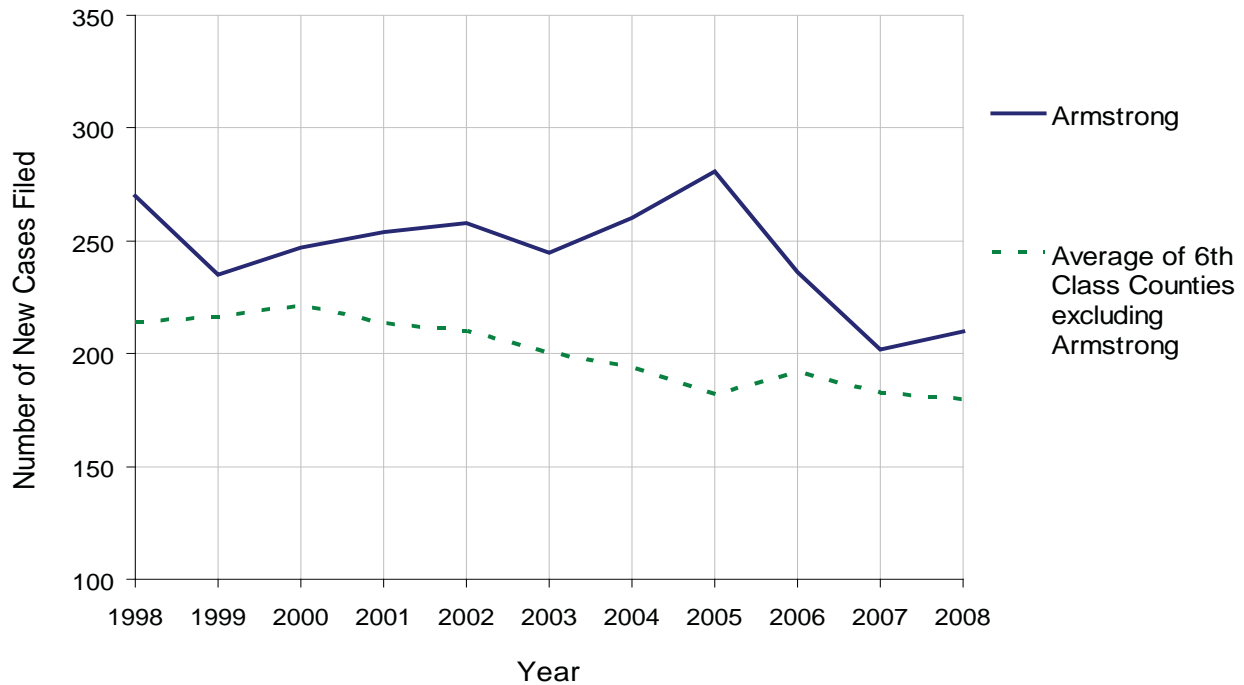
ARMSTRONG COUNTY

2008 Population Estimate: 68,790
 Class of County: 6th
 No. of Common Pleas Court Judgeships: 2



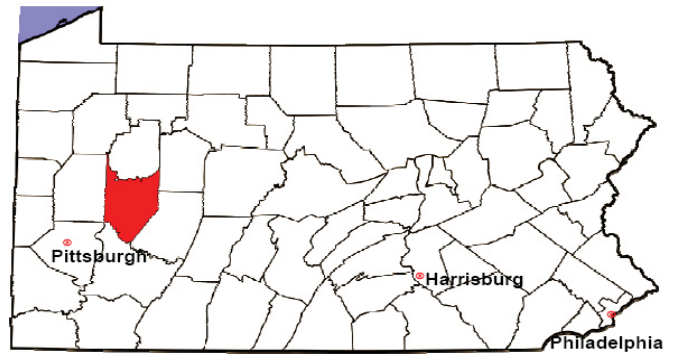
2008 Divorce	No. of Petitions	%
Cases Pending 1/1/08	70	
New Cases Filed in '08	210	
Cases Available for Processing	280	
Processed By:		
Contested Before a Judge	0	0.0%
Contested Before a Master	12	6.9%
Uncontested	161	93.1%
Other	0	0.0%
Cases Processed	173	100.0%
Cases Pending 12/31/08	107	

Divorce New Cases Filed, 1998-2008



ARMSTRONG COUNTY

2008 Population Estimate: 68,790
 Class of County: 6th
 No. of Common Pleas Court Judgeships: 2



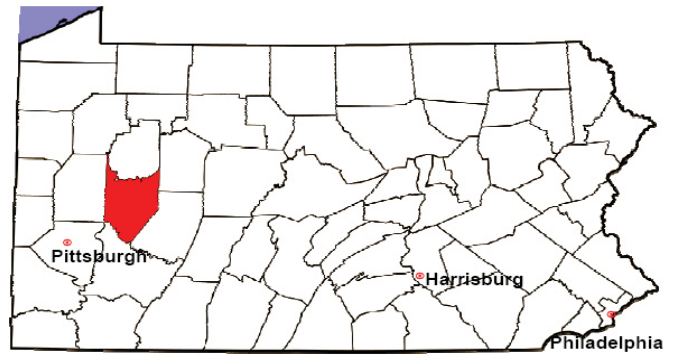
2008 Juvenile Dependency Abuse/Neglect	No. of Petitions	%
Cases Pending 1/1/08	3	
New Cases Filed in '08	36	
Cases Available for Processing	39	
Processed By:		
Judge	37	97.4%
Non-Judicial Officer	0	0.0%
Other	1	2.6%
Cases Processed	38	100.0%
Cases Pending 12/31/08	1	

Abuse/Neglect New Cases Filed, 2000-2008



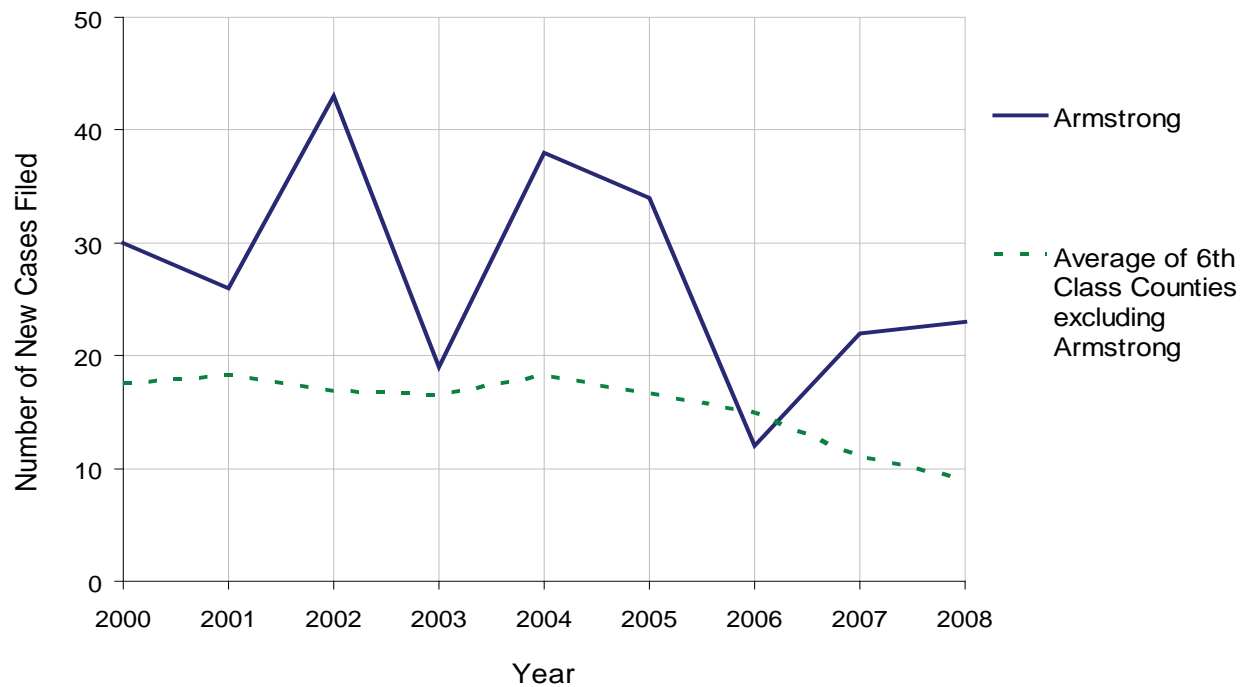
ARMSTRONG COUNTY

2008 Population Estimate: 68,790
 Class of County: 6th
 No. of Common Pleas Court Judgeships: 2



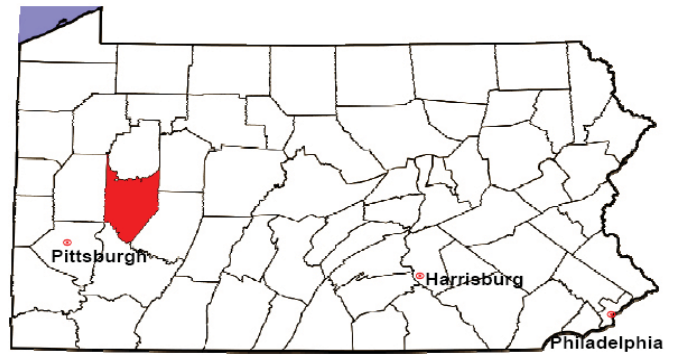
2008 Juvenile Dependency Status Offenses	No. of Petitions	%
Cases Pending 1/1/08	0	
New Cases Filed in '08	23	
Cases Available for Processing	23	
Processed By:		
Judge	21	95.5%
Non-Judicial Officer	0	0.0%
Other	1	4.5%
Cases Processed	22	100.0%
Cases Pending 12/31/08	1	

Status Offenses New Cases Filed, 2000-2008



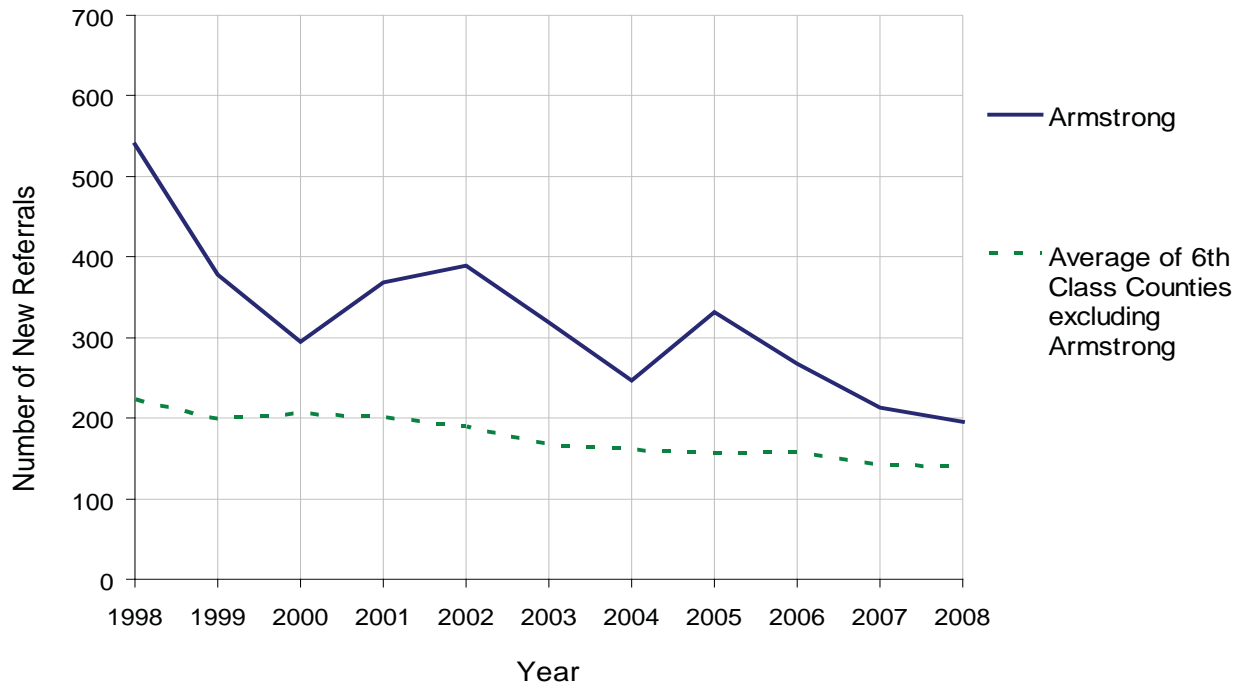
ARMSTRONG COUNTY

2008 Population Estimate: 68,790
 Class of County: 6th
 No. of Common Pleas Court Judgeships: 2



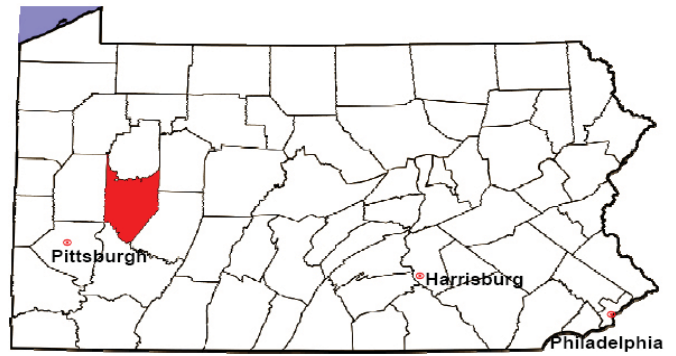
2008 Juvenile Delinquency	No. of Referrals	%
Cases Pending 1/1/08	115	
New Referrals in '08	195	
Cases Available for Processing	310	
Processed By:		
Judge	85	30.9%
Non-Judicial Officer	184	66.9%
Other	6	2.2%
Cases Processed	275	100.0%
Cases Pending 12/31/08	35	

Juvenile Delinquency New Referrals, 1998-2008



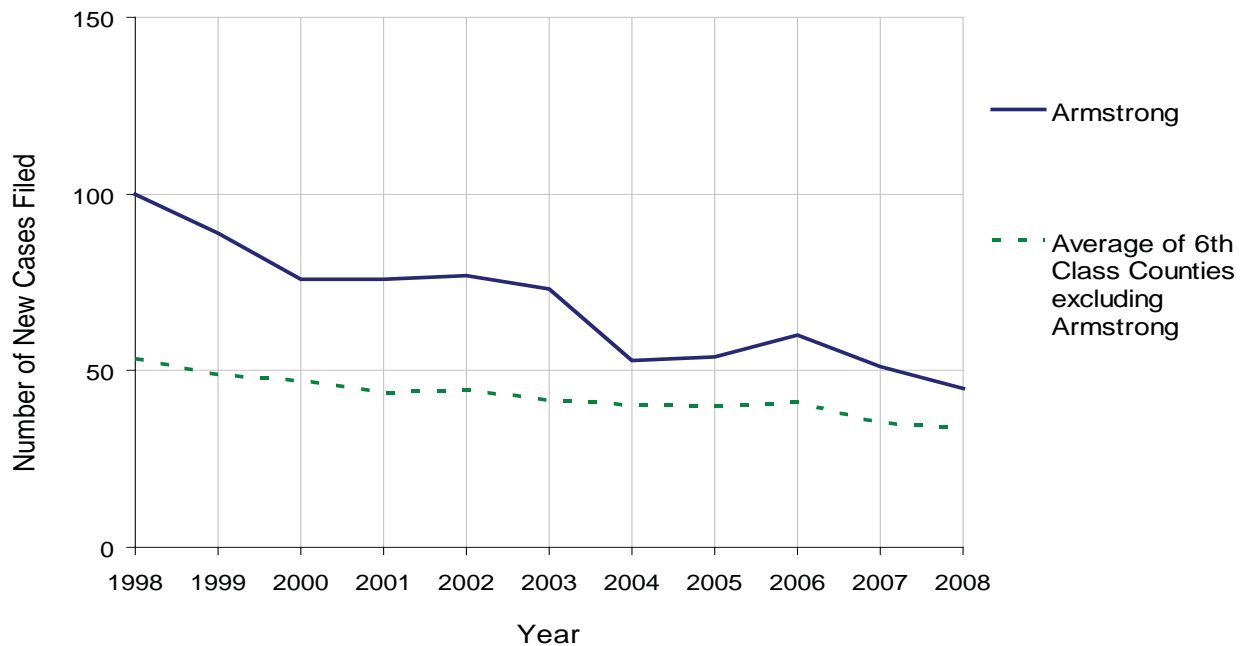
ARMSTRONG COUNTY

2008 Population Estimate: 68,790
 Class of County: 6th
 No. of Common Pleas Court Judgeships: 2



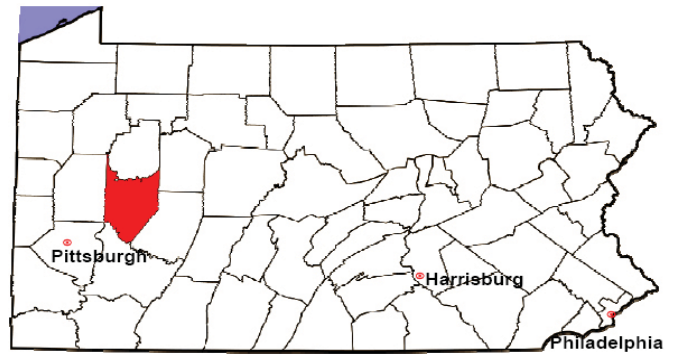
2008 Accounts	No. of Accounts	%
Cases Pending 1/1/08	31	
New Cases Filed in '08	45	
Cases Available for Processing	76	
Processed By:		
Contested before a Judge	0	0.0%
Contested before a Non-Judicial Officer	0	0.0%
Uncontested	44	71.0%
Other	18	29.0%
Cases Processed	62	100.0%
Cases Pending 12/31/08	14	

Accounts New Cases Filed, 1998-2008



ARMSTRONG COUNTY

2008 Population Estimate: 68,790
 Class of County: 6th
 No. of Common Pleas Court Judgeships: 2

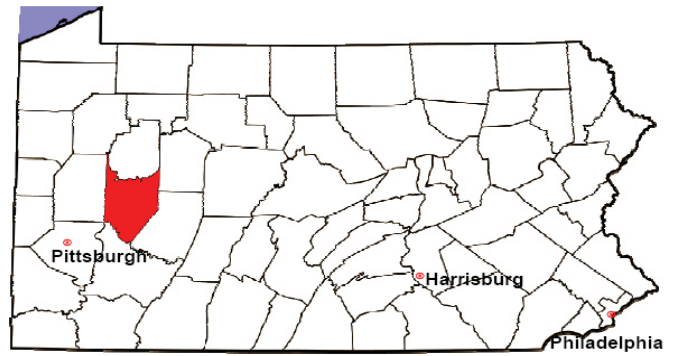


2008 Adoptions		No. of Cases	%
Cases Pending 1/1/08		31	
New Cases Filed in '08		36	
Cases Available for Processing		67	
Processed By:			
Contested before a Judge	Granted	0	0.0%
	Denied	0	0.0%
Uncontested	Granted	30	58.8%
	Denied	0	0.0%
Other		21	41.2%
Cases Processed		51	100.0%
Cases Pending 12/31/08		16	

Note: Prior to 2008, each petition was counted as one new case, regardless of the number of children listed on the petition. Starting in 2008, each child listed on a petition is counted as a separate case. Therefore, statistics for 2008 should not be compared with those for previous years.

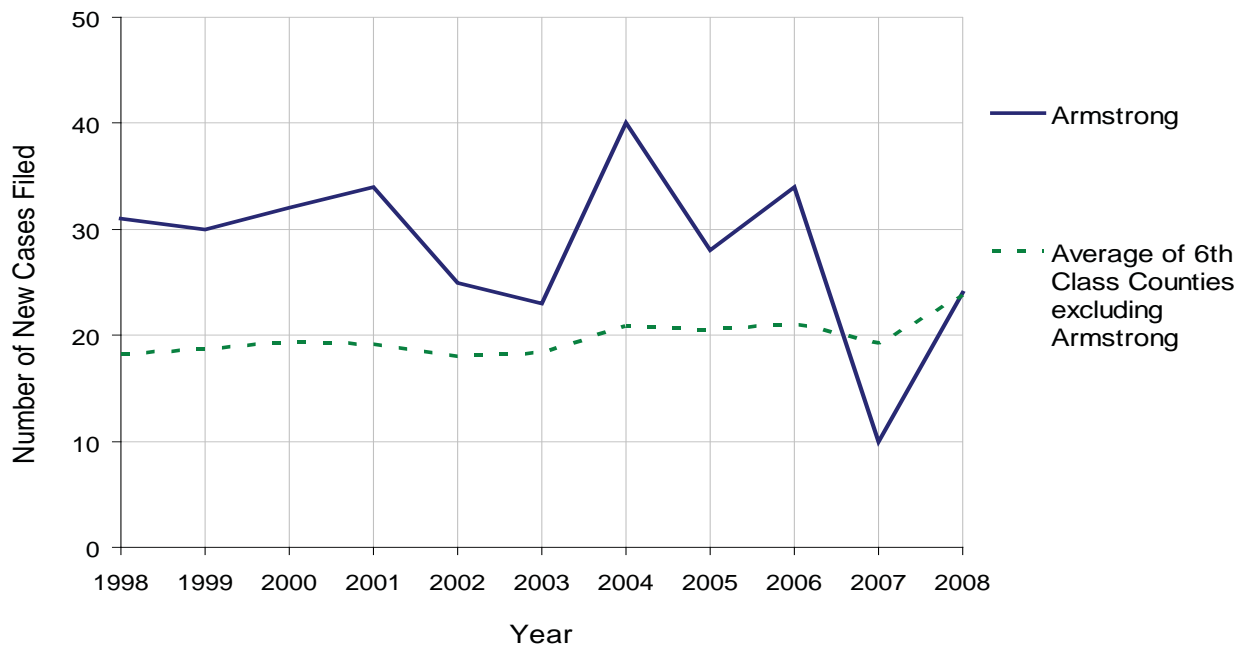
ARMSTRONG COUNTY

2008 Population Estimate: 68,790
 Class of County: 6th
 No. of Common Pleas Court Judgeships: 2



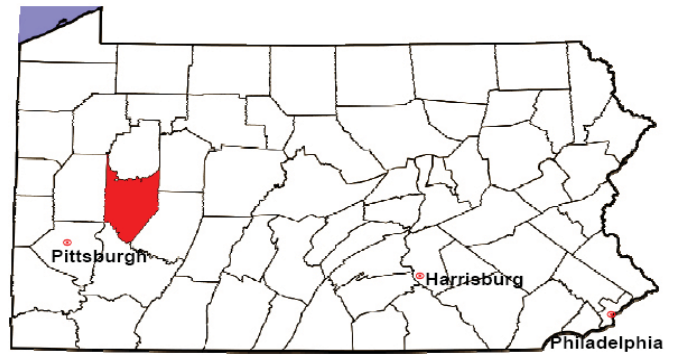
2008 Relinquishments/Terminations	No. of Petitions	%
Cases Pending 1/1/08	38	
New Cases Filed in '08	24	
Cases Available for Processing	62	
Processed By:		
Contested before a Judge	0	0.0%
Uncontested	20	39.2%
Other	31	60.8%
Cases Processed	51	100.0%
Cases Pending 12/31/08	11	

Relinquishments/Terminations New Cases Filed, 1998-2008



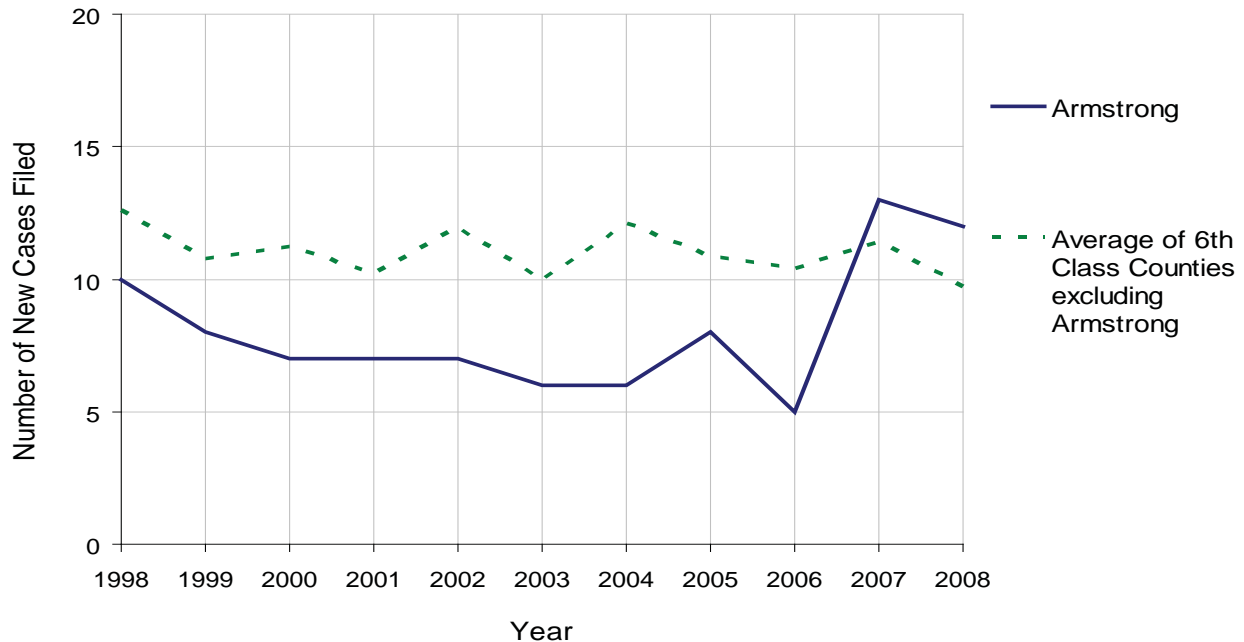
ARMSTRONG COUNTY

2008 Population Estimate: 68,790
 Class of County: 6th
 No. of Common Pleas Court Judgeships: 2



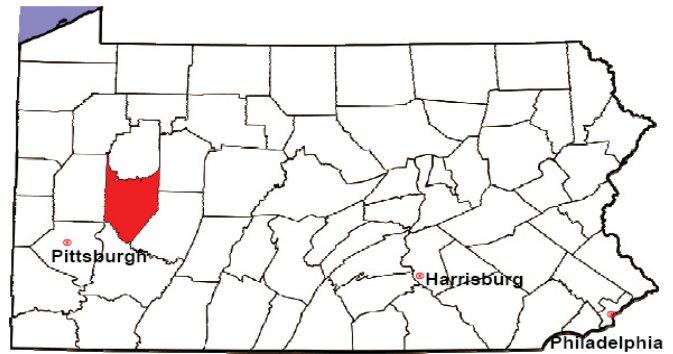
2008 Appointment of Guardians	No. of Petitions	%
Cases Pending 1/1/08	12	
New Cases Filed in '08	12	
Cases Available for Processing	24	
Processed By:		
Contested before a Judge	1	5.6%
Uncontested	9	50.0%
Other	8	44.4%
Cases Processed	18	100.0%
Cases Pending 12/31/08	6	

Appointment of Guardians New Cases Filed, 1998-2008



ARMSTRONG COUNTY

2008 Population Estimate: 68,790
 Class of County: 6th
 No. of Common Pleas Court Judgeships: 2



2008 Jury Activity & Performance Measures		
A. Juror Days	1,441	
B. Number Sent to Voir Dire	1,743	
Voir Dire Attendance Rate $(B/A * 100)$		121.0%
C. Number of Voir Dires Started	41	
Juror Days Per Voir Dire Starts (A/C)		35
D. Number of Jurors Selected	570	
Juror Selection Rate $(D/B * 100)$		32.7%
E. Number of Jury Trials Started	23	
Juror Days Per Trial Starts (A/E)		63
Number of Voir Dires Not Resulting in Trial $(C-E)$		18
Percent Voir Dires Not Resulting in Trial $(C-E)/C * 100$		43.9%
F. Pool Days	13	
G. Zero Panel Days	1	
Percent Zero Panel Days $(G/F * 100)$		7.7%
H. Total Juror Fees Incurred	\$26,920	
Average Juror Fees Per Trial (H/E)		\$1,170

Average Juror Fees Per Trial, 1998-2008

