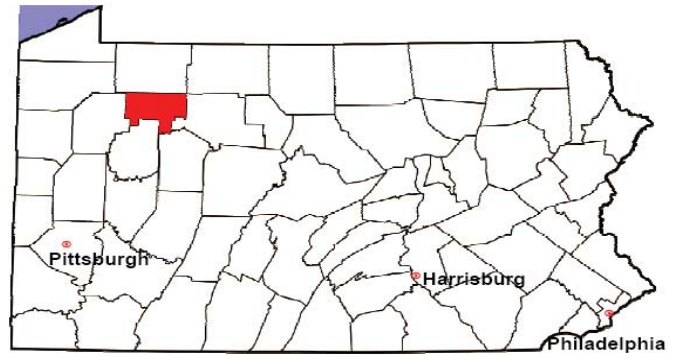


# FOREST COUNTY

2008 Population Estimate: 6,825

Class of County: 8th

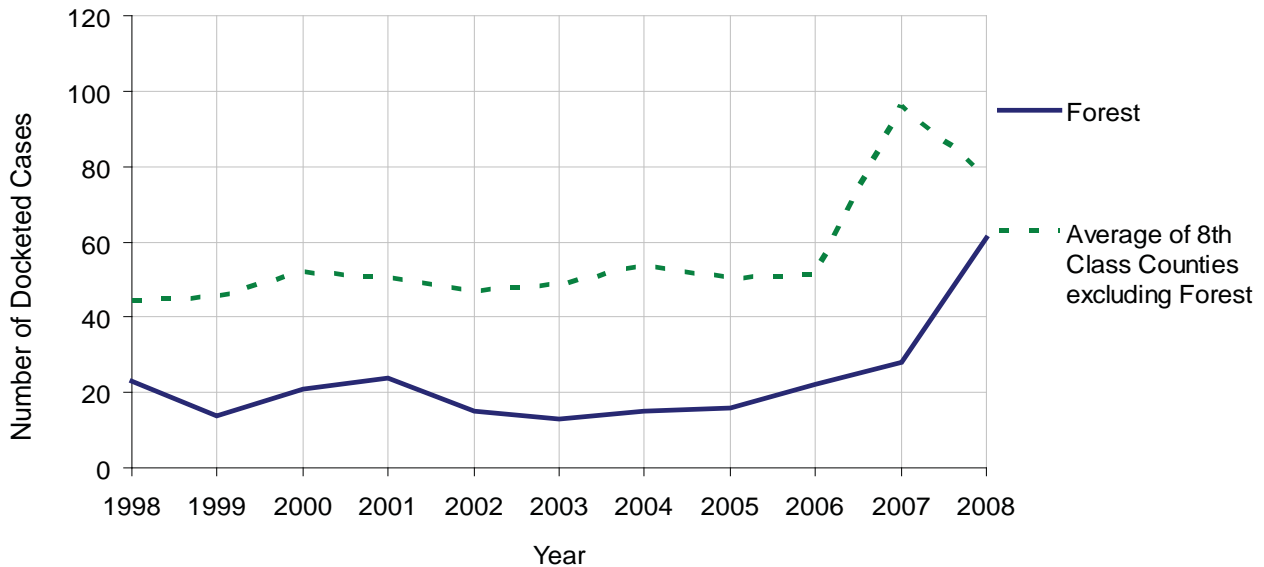
No. of Common Pleas Court Judgeships: 2  
(Forest and Warren combined)



2008 Civil	Civil Action		
Docketed Cases	61		
Arbitrated Cases	0		
<b>Trial-Ready Cases:</b>	<b>Civil Action</b>	<b>Other</b>	<b>Total</b>
Cases Pending 1/1/08	22	0	22
Became Trial Ready in '08	48	0	48
Restored to Trial List	0	0	0
Appeals from Arbitration	0	0	0
<b>Cases Available for Trial</b>	<b>70</b>	<b>0</b>	<b>70</b>
<b>Disposed By:</b>			
Settlement	2	0	2
Non-Jury Trial	1	0	1
Jury Trial	1	0	1
Stricken from Trial List	51	0	51
Other	14	0	14
<b>Cases Disposed</b>	<b>69</b>	<b>0</b>	<b>69</b>
<b>Cases Pending 12/31/08</b>	<b>1</b>	<b>0</b>	<b>1</b>

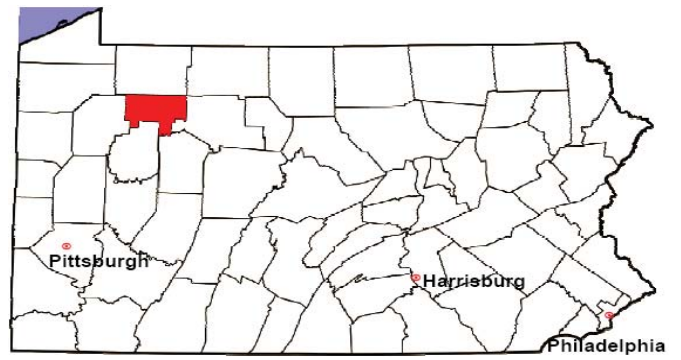
Age of Trial-Ready Cases as of 12/31/08 (Civil Action Only)		
0-6 months	0	0%
7-12 months	0	0%
13-18 months	0	0%
19-24 months	1	100%
25-30 months	0	0%
31-36 months	0	0%
Over 36 months	0	0%
<b>Total</b>	<b>1</b>	<b>100%</b>

Docketed Cases, 1998-2008



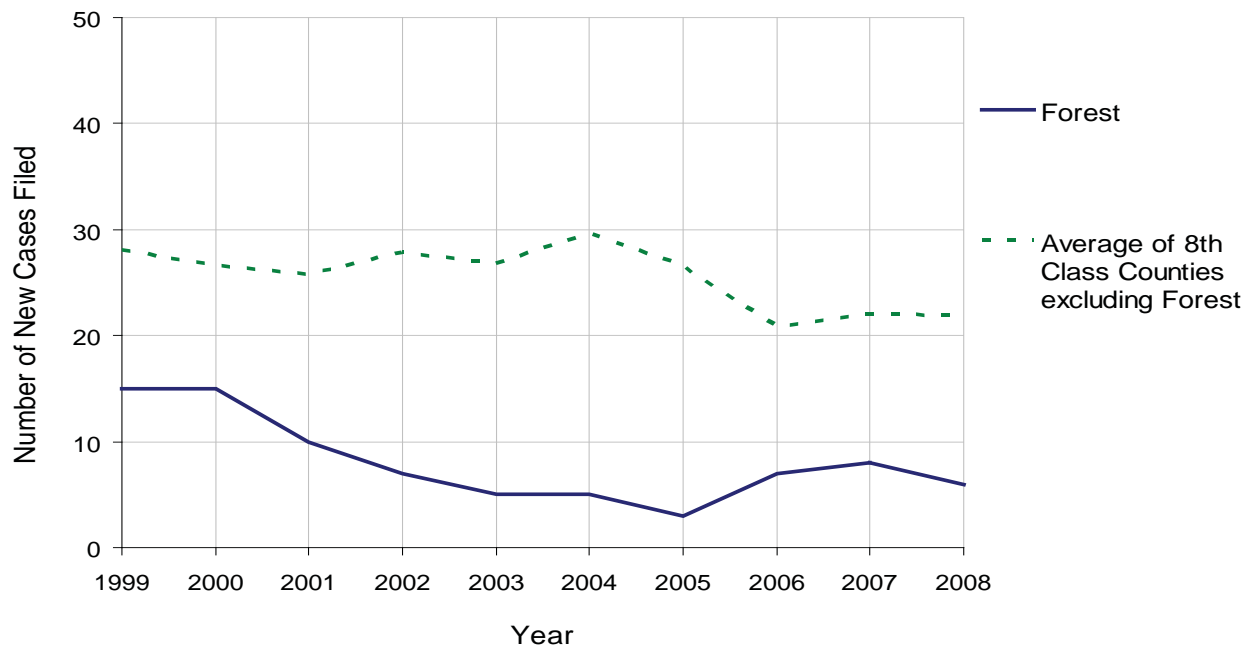
# FOREST COUNTY

2008 Population Estimate: 6,825  
 Class of County: 8th  
 No. of Common Pleas Court Judgeships: 2  
 (Forest and Warren combined)



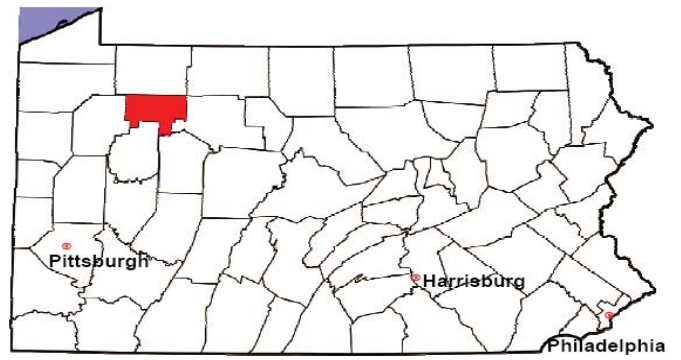
2008 Protection From Abuse	No. of Petitions	%
Cases Pending 1/1/08	0	
New Cases Filed in '08	6	
<b>Cases Available for Processing</b>	<b>6</b>	
Processed By:		
Final Order After Hearing	4	66.7%
Final Order by Stipulation or Agreement	1	16.7%
Dismissal	0	0.0%
Withdrawal	1	16.7%
Other	0	0.0%
<b>Cases Processed</b>	<b>6</b>	<b>100.0%</b>
<b>Cases Pending 12/31/08</b>	<b>0</b>	

PFA New Cases Filed, 1999-2008



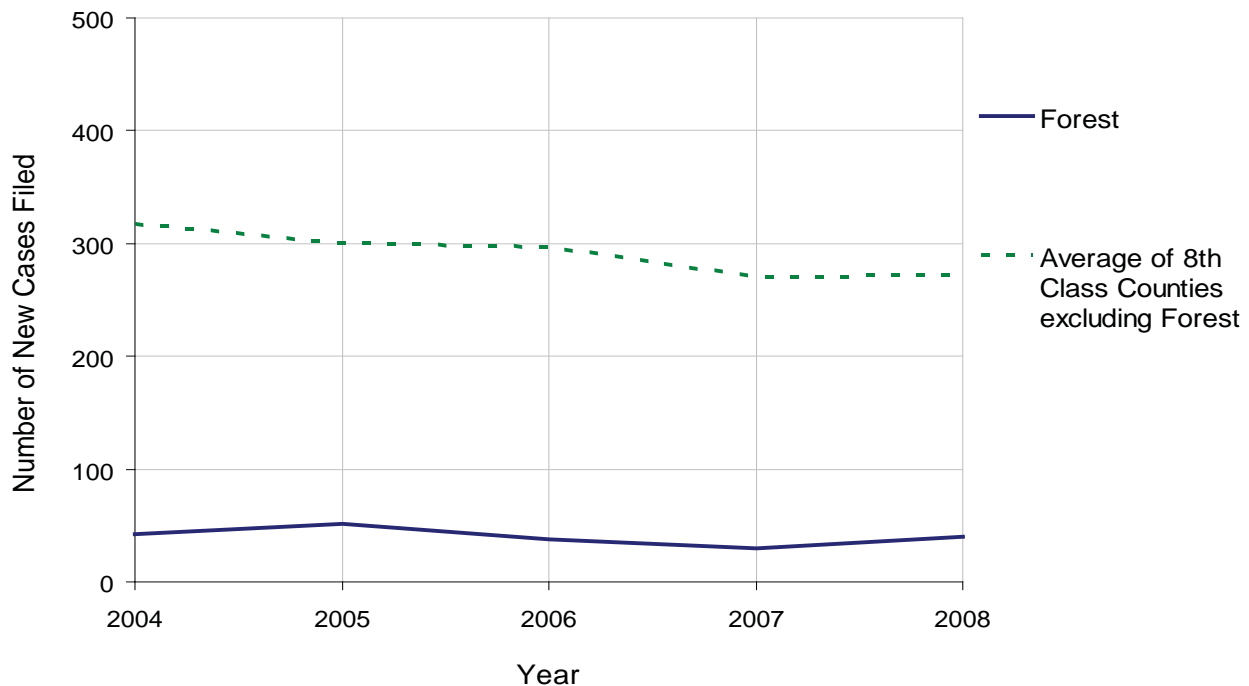
# FOREST COUNTY

2008 Population Estimate: 6,825  
 Class of County: 8th  
 No. of Common Pleas Court Judgeships: 2  
 (Forest and Warren combined)



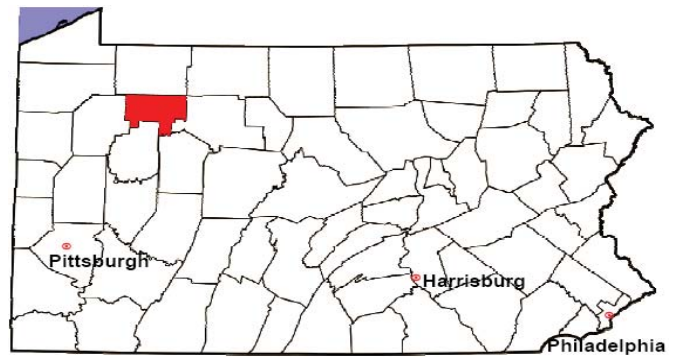
<b>2008 Spousal &amp; Child Support</b>	No. of Petitions	%
Cases Pending 1/1/08	15	
New Cases Filed in '08	40	
Dockets Transferred In (+)	1	
Dockets Transferred Out (-)	2	
<b>Cases Available for Processing</b>	<b>54</b>	
Processed By:		
Judge	3	6.7%
Intake Officer	25	55.6%
Hearing Officer	17	37.8%
Other	0	0.0%
<b>Cases Processed</b>	<b>45</b>	<b>100.0%</b>
<b>Cases Pending 12/31/08</b>	<b>9</b>	

Spousal & Child Support New Cases Filed, 1998-2008



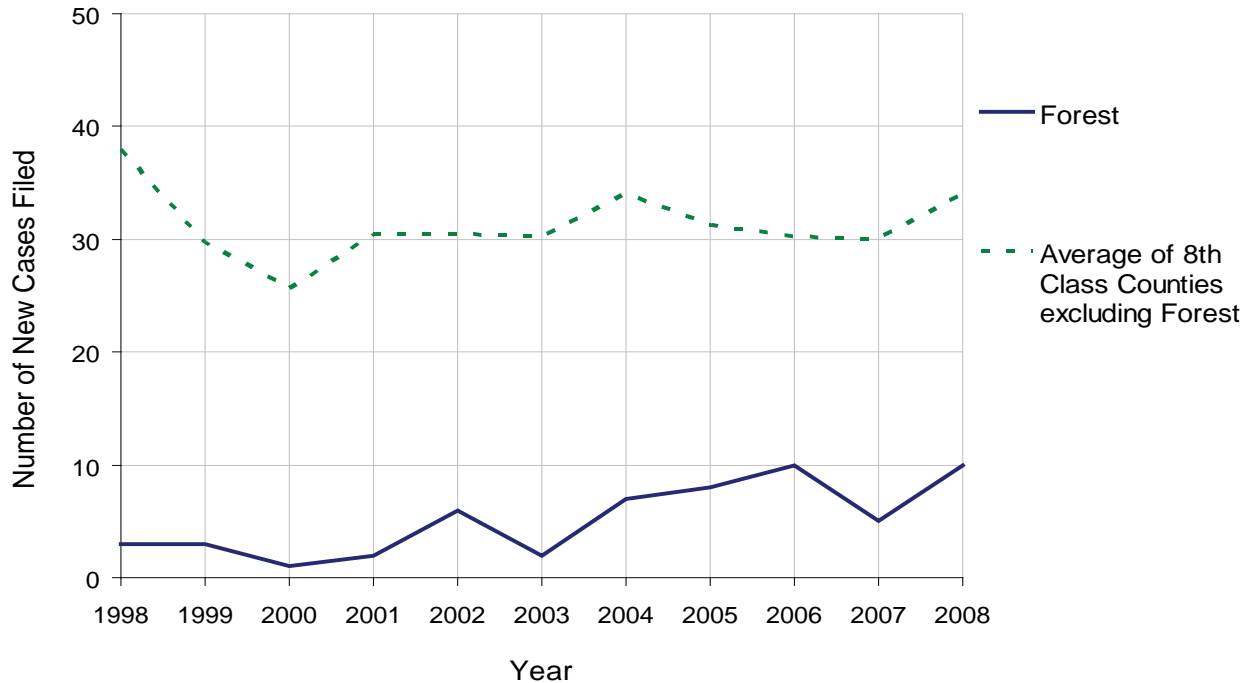
# FOREST COUNTY

2008 Population Estimate: 6,825  
 Class of County: 8th  
 No. of Common Pleas Court Judgeships: 2  
 (Forest and Warren combined)



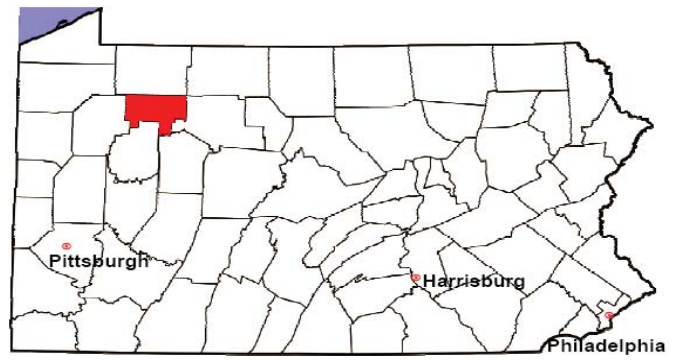
<b>2008 Custody/Partial Custody/Visitation</b>	No. of Petitions	%
Cases Pending 1/1/08	3	
New Cases Filed in '08	10	
<b>Cases Available for Processing</b>	<b>13</b>	
Processed By:		
Judge	6	85.7%
Non-Judicial Officer	1	14.3%
Other	0	0.0%
<b>Cases Processed</b>	<b>7</b>	<b>100.0%</b>
<b>Cases Pending 12/31/08</b>	<b>6</b>	

Custody/Partial Custody/Visitation New Cases Filed  
 1998-2008



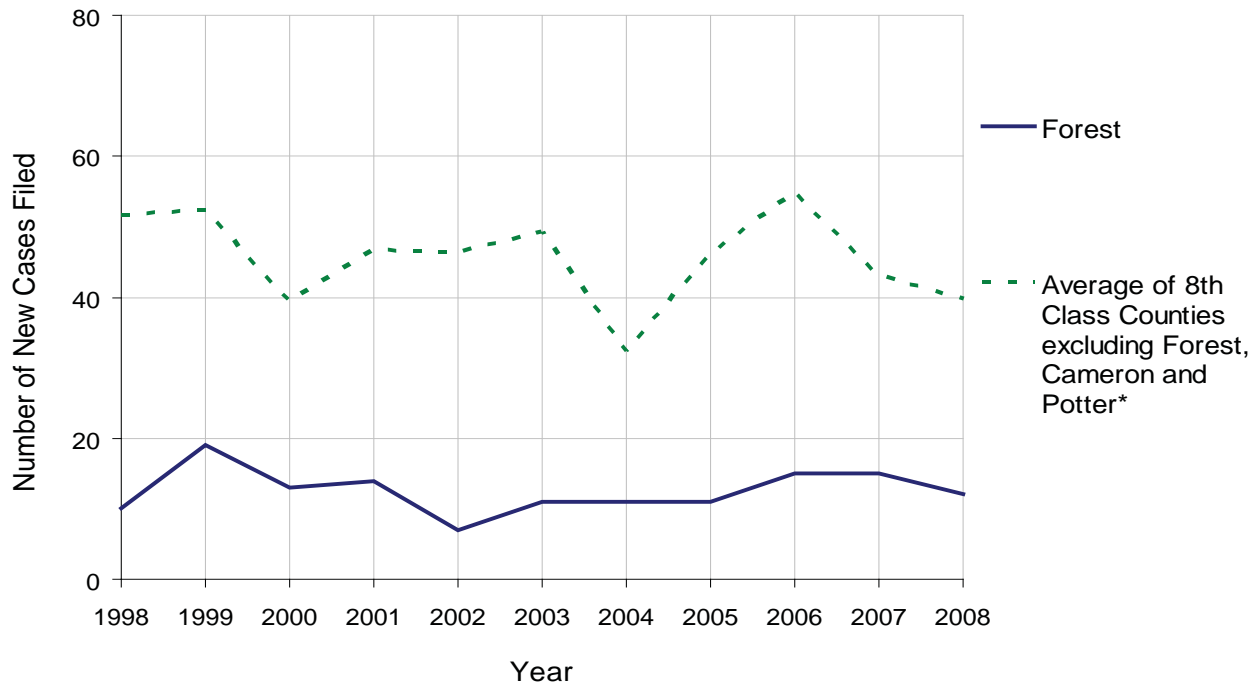
# FOREST COUNTY

2008 Population Estimate: 6,825  
 Class of County: 8th  
 No. of Common Pleas Court Judgeships: 2  
 (Forest and Warren combined)



<b>2008 Divorce</b>	No. of Petitions	%
Cases Pending 1/1/08	24	
New Cases Filed in '08	12	
<b>Cases Available for Processing</b>	<b>36</b>	
Processed By:		
Contested Before a Judge	5	45.5%
Contested Before a Master	0	0.0%
Uncontested	6	54.5%
Other	0	0.0%
<b>Cases Processed</b>	<b>11</b>	<b>100.0%</b>
<b>Cases Pending 12/31/08</b>	<b>25</b>	

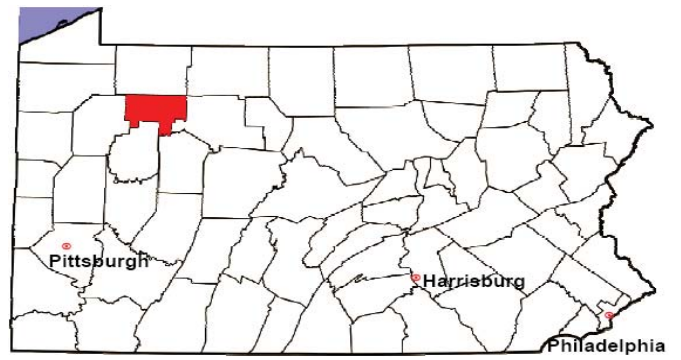
Divorce New Cases Filed, 1998-2008



\* Due to a high number of out-of-district petitions, Cameron and Potter Counties have larger inventories than other 8th class counties. Therefore, it is not meaningful to compare Cameron and Potter Counties with other 8th class counties.

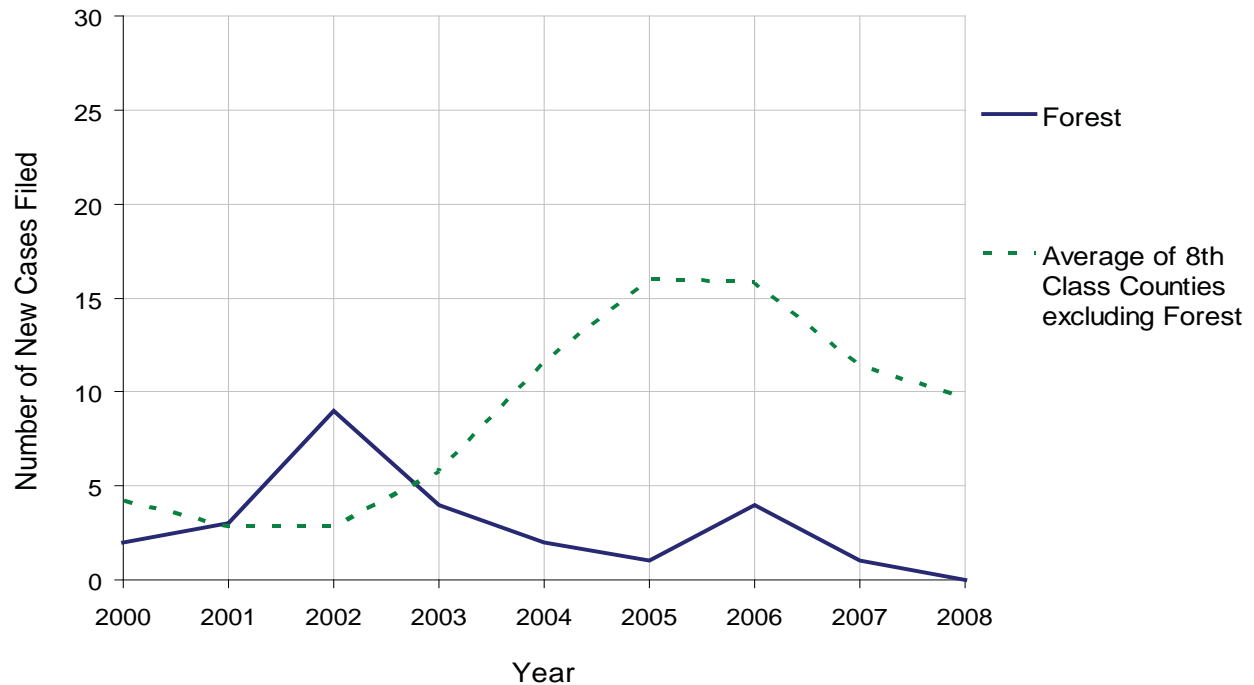
# FOREST COUNTY

2008 Population Estimate: 6,825  
 Class of County: 8th  
 No. of Common Pleas Court Judgeships: 2  
 (Forest and Warren combined)



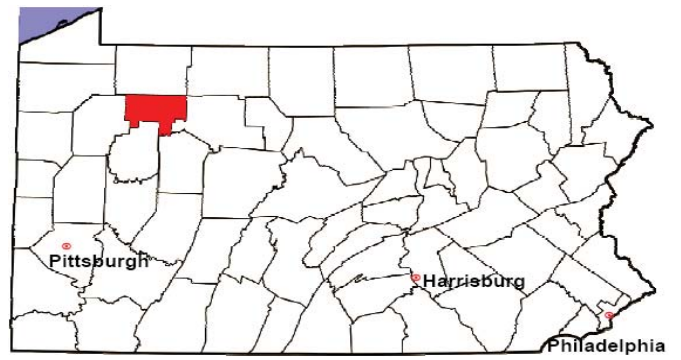
2008 Juvenile Dependency Abuse/Neglect	No. of Petitions	%
Cases Pending 1/1/08	0	
New Cases Filed in '08	0	
<b>Cases Available for Processing</b>	<b>0</b>	
Processed By:		
Judge	0	
Non-Judicial Officer	0	
Other	0	
<b>Cases Processed</b>	<b>0</b>	
<b>Cases Pending 12/31/08</b>	<b>0</b>	

Abuse/Neglect New Cases Filed, 2000-2008



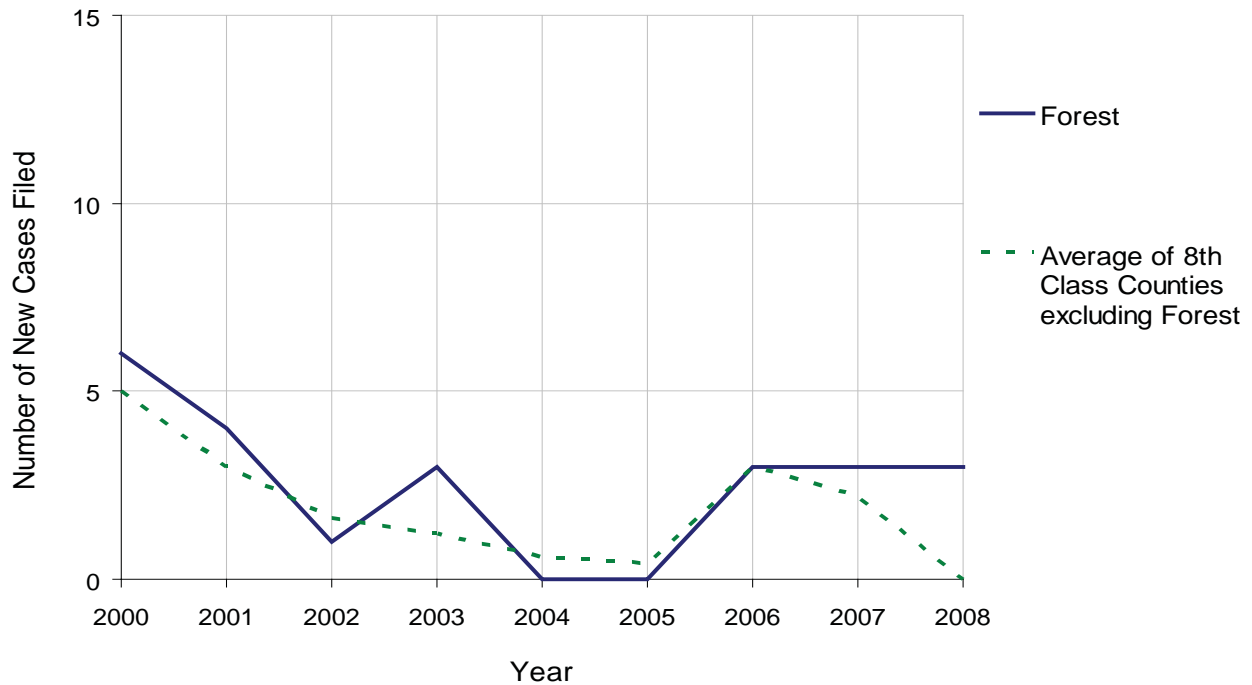
# FOREST COUNTY

2008 Population Estimate: 6,825  
 Class of County: 8th  
 No. of Common Pleas Court Judgeships: 2  
 (Forest and Warren combined)



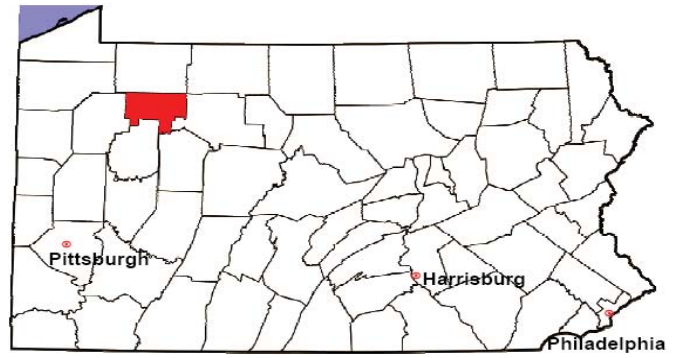
2008 Juvenile Dependency Status Offenses	No. of Petitions	%
Cases Pending 1/1/08	0	
New Cases Filed in '08	3	
<b>Cases Available for Processing</b>	<b>3</b>	
Processed By:		
Judge	0	0.0%
Non-Judicial Officer	2	100.0%
Other	0	0.0%
<b>Cases Processed</b>	<b>2</b>	<b>100.0%</b>
<b>Cases Pending 12/31/08</b>	<b>1</b>	

Status Offenses New Cases Filed, 2000-2008



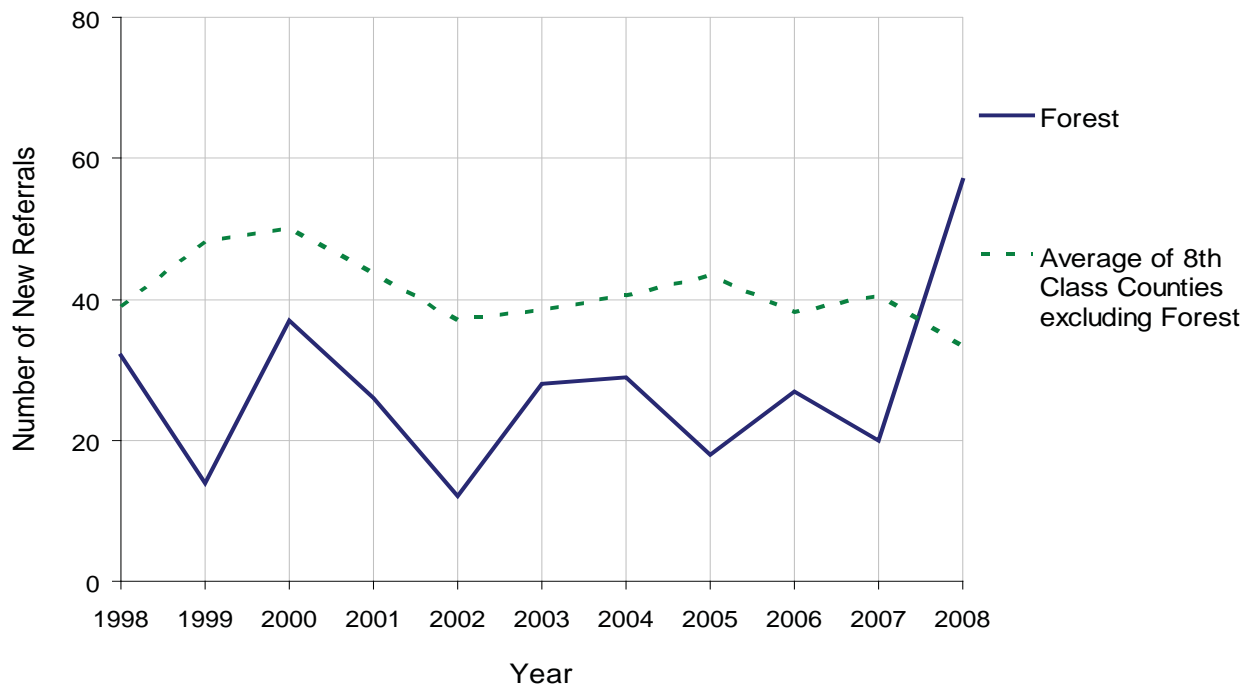
# FOREST COUNTY

2008 Population Estimate: 6,825  
 Class of County: 8th  
 No. of Common Pleas Court Judgeships: 2  
 (Forest and Warren combined)



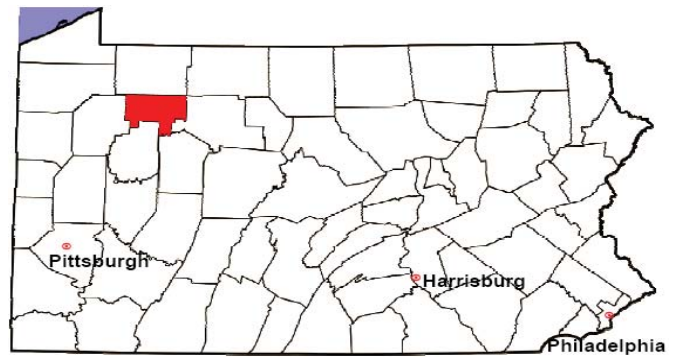
2008 Juvenile Delinquency	No. of Referrals	%
Cases Pending 1/1/08	4	
New Referrals in '08	57	
<b>Cases Available for Processing</b>	<b>61</b>	
Processed By:		
Judge	44	88.0%
Non-Judicial Officer	2	4.0%
Other	4	8.0%
<b>Cases Processed</b>	<b>50</b>	<b>100.0%</b>
<b>Cases Pending 12/31/08</b>	<b>11</b>	

Juvenile Delinquency New Referrals, 1998-2008



# FOREST COUNTY

2008 Population Estimate: 6,825  
 Class of County: 8th  
 No. of Common Pleas Court Judgeships: 2  
 (Forest and Warren combined)



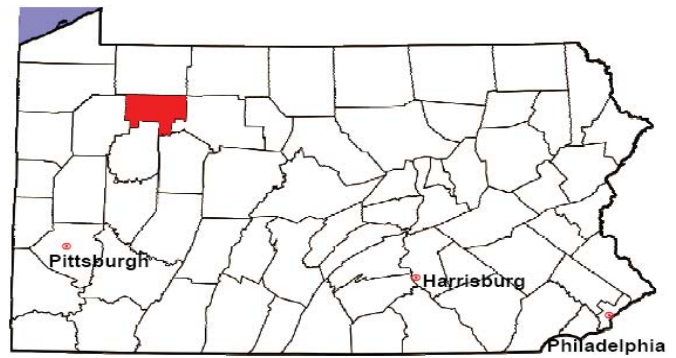
2008 Accounts	No. of Accounts	%
Cases Pending 1/1/08	2	
New Cases Filed in '08	2	
<b>Cases Available for Processing</b>	<b>4</b>	
Processed By:		
Contested before a Judge	0	0.0%
Contested before a Non-Judicial Officer	0	0.0%
Uncontested	3	100.0%
Other	0	0.0%
<b>Cases Processed</b>	<b>3</b>	<b>100.0%</b>
<b>Cases Pending 12/31/08</b>	<b>1</b>	

Accounts New Cases Filed, 1998-2008



# FOREST COUNTY

2008 Population Estimate: 6,825  
 Class of County: 8th  
 No. of Common Pleas Court Judgeships: 2  
 (Forest and Warren combined)

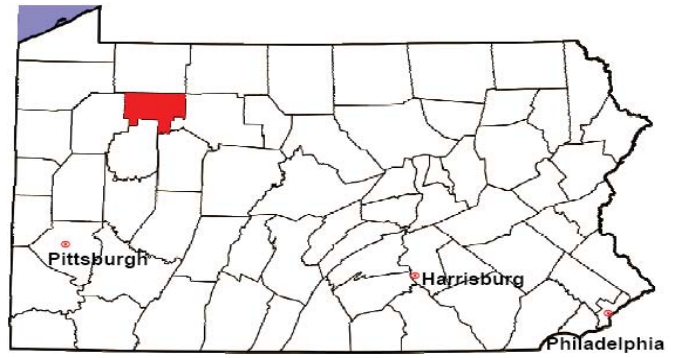


<b>2008 Adoptions</b>	No. of Cases	%
Cases Pending 1/1/08	0	
New Cases Filed in '08	0	
<b>Cases Available for Processing</b>	<b>0</b>	
Processed By:		
Contested before a Judge	Granted	0
	Denied	0
Uncontested	Granted	0
	Denied	0
Other	0	
<b>Cases Processed</b>	<b>0</b>	
<b>Cases Pending 12/31/08</b>	<b>0</b>	

Note: Prior to 2008, each petition was counted as one new case, regardless of the number of children listed on the petition. Starting in 2008, each child listed on a petition is counted as a separate case. Therefore, statistics for 2008 should not be compared with those for previous years.

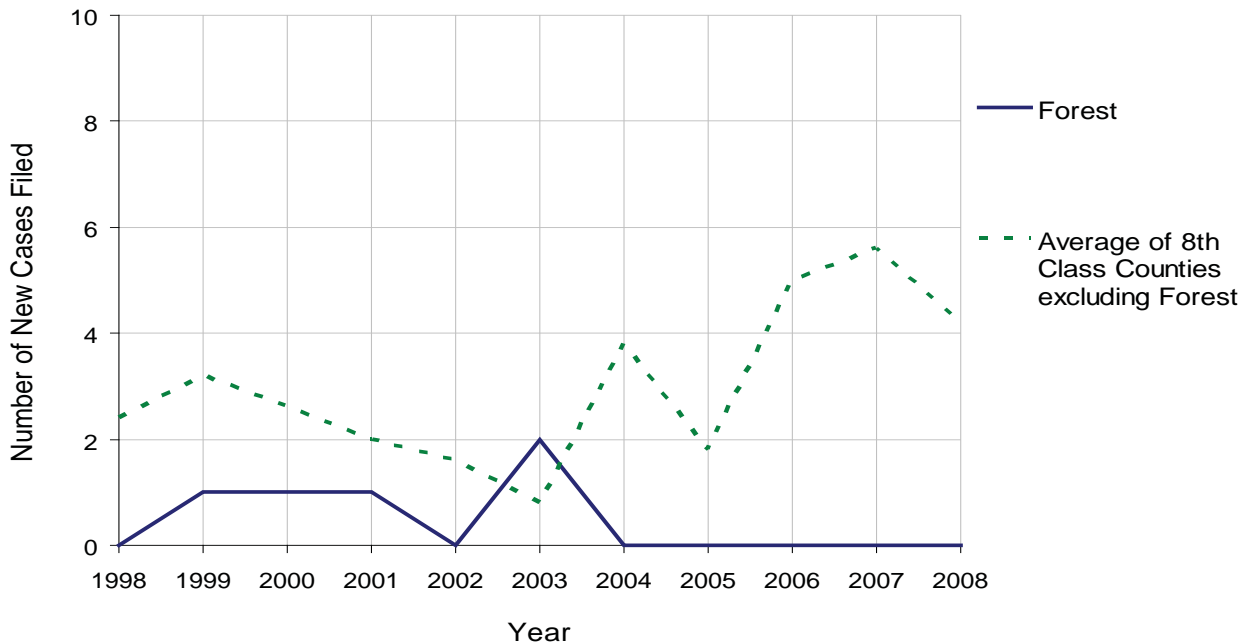
# FOREST COUNTY

2008 Population Estimate: 6,825  
 Class of County: 8th  
 No. of Common Pleas Court Judgeships: 2  
 (Forest and Warren combined)



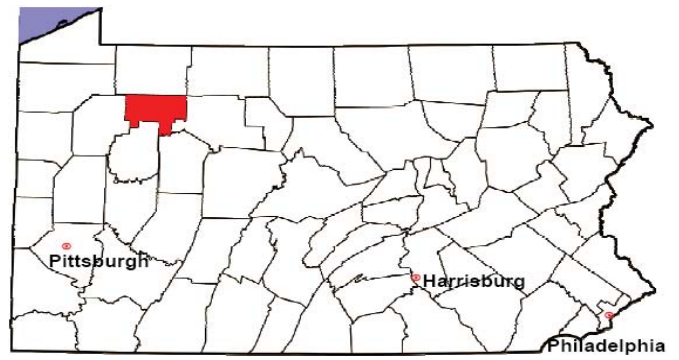
2008 Relinquishments/Terminations	No. of Petitions	%
Cases Pending 1/1/08	0	
New Cases Filed in '08	0	
<b>Cases Available for Processing</b>	<b>0</b>	
Processed By:		
Contested before a Judge	0	
Uncontested	0	
Other	0	
<b>Cases Processed</b>	<b>0</b>	
<b>Cases Pending 12/31/08</b>	<b>0</b>	

Relinquishments/Terminations New Cases Filed, 1998-2008



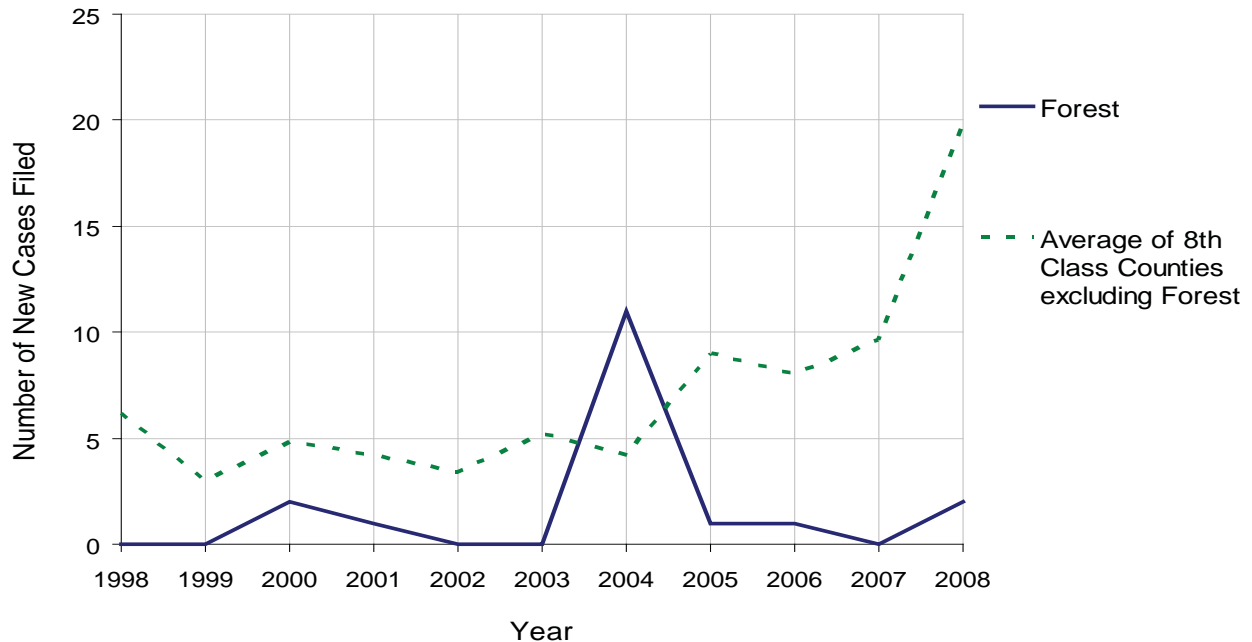
# FOREST COUNTY

2008 Population Estimate: 6,825  
 Class of County: 8th  
 No. of Common Pleas Court Judgeships: 2  
 (Forest and Warren combined)



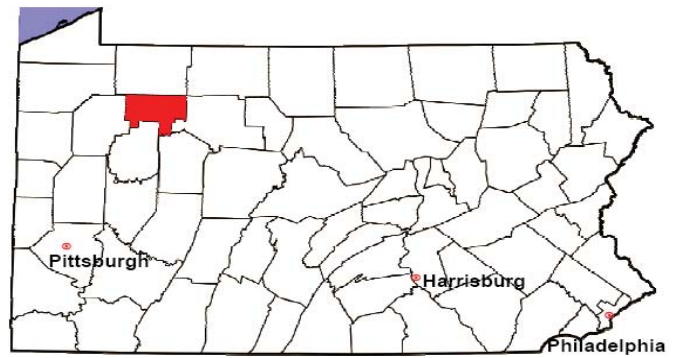
2008 Appointment of Guardians	No. of Petitions	%
Cases Pending 1/1/08	0	
New Cases Filed in '08	2	
<b>Cases Available for Processing</b>	<b>2</b>	
Processed By:		
Contested before a Judge	0	0.0%
Uncontested	2	100.0%
Other	0	0.0%
<b>Cases Processed</b>	<b>2</b>	<b>100.0%</b>
<b>Cases Pending 12/31/08</b>	<b>0</b>	

Appointment of Guardians New Cases Filed, 1998-2008



# FOREST COUNTY

2008 Population Estimate: 6,825  
 Class of County: 8th  
 No. of Common Pleas Court Judgeships: 2  
 (Forest and Warren combined)



2008 Jury Activity & Performance Measures		
A. Juror Days		234
B. Number Sent to Voir Dire		139
	Voir Dire Attendance Rate $(B/A * 100)$	59.4%
C. Number of Voir Dires Started		4
	Juror Days Per Voir Dire Starts $(A/C)$	59
D. Number of Jurors Selected		56
	Juror Selection Rate $(D/B * 100)$	40.3%
E. Number of Jury Trials Started		3
	Juror Days Per Trial Starts $(A/E)$	78
	Number of Voir Dires Not Resulting in Trial $(C-E)$	1
	Percent Voir Dires Not Resulting in Trial $(C-E)/C * 100$	25.0%
F. Pool Days		3
G. Zero Panel Days		0
	Percent Zero Panel Days $(G/F * 100)$	0.0%
H. Total Juror Fees Incurred		\$4,571
	Average Juror Fees Per Trial $(H/E)$	\$1,524

Average Juror Fees Per Trial, 1998-2008

