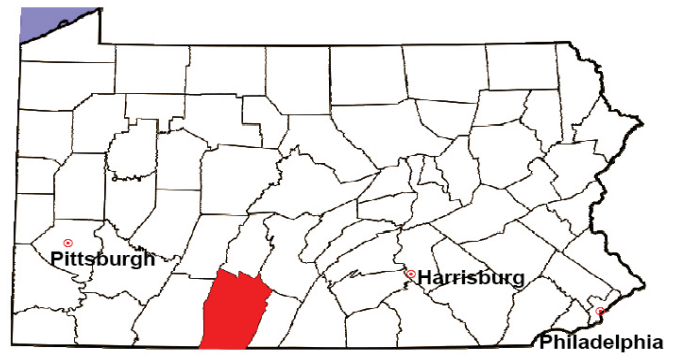


BEDFORD COUNTY

2008 Population Estimate: 49,727

Class of County: 6th

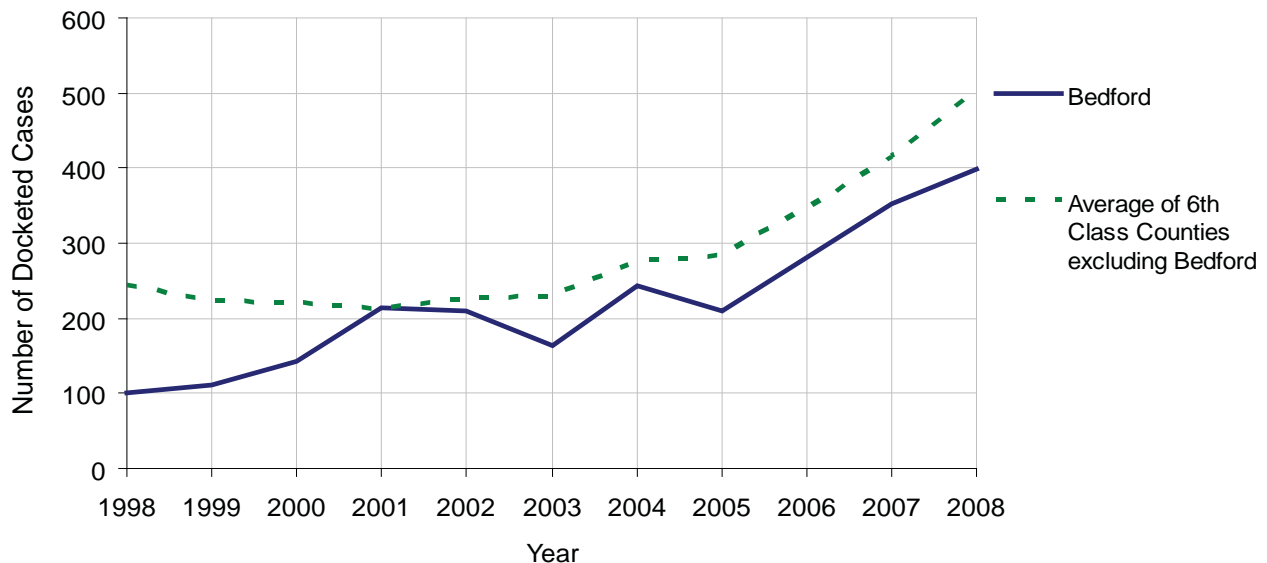
No. of Common Pleas Court Judgeships: 2



2008 Civil		Civil Action		
Docketed Cases		398		
Arbitrated Cases		4		
Trial-Ready Cases:		Civil Action	Other	Total
Cases Pending 1/1/08		12	1	13
Became Trial Ready in '08		12	0	12
Restored to Trial List		0	0	0
Appeals from Arbitration		0	0	0
Cases Available for Trial		24	1	25
Disposed By:				
Settlement		8	0	8
Non-Jury Trial		1	0	1
Jury Trial		1	0	1
Stricken from Trial List		0	0	0
Other		3	0	3
Cases Disposed		13	0	13
Cases Pending 12/31/08		11	1	12

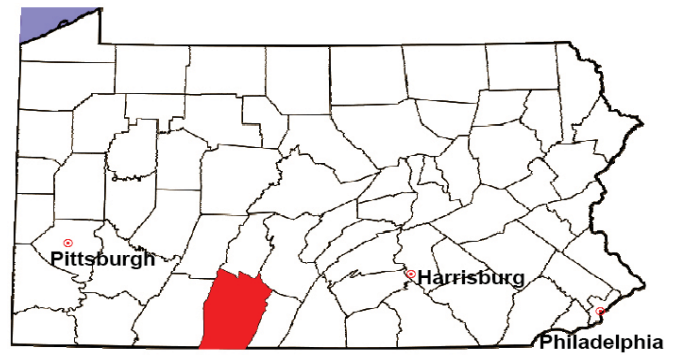
Age of Trial-Ready Cases as of 12/31/08 (Civil Action Only)		
0-6 months	6	55%
7-12 months	4	36%
13-18 months	1	9%
19-24 months	0	0%
25-30 months	0	0%
31-36 months	0	0%
Over 36 months	0	0%
Total	11	100%

Docketed Cases, 1998-2008



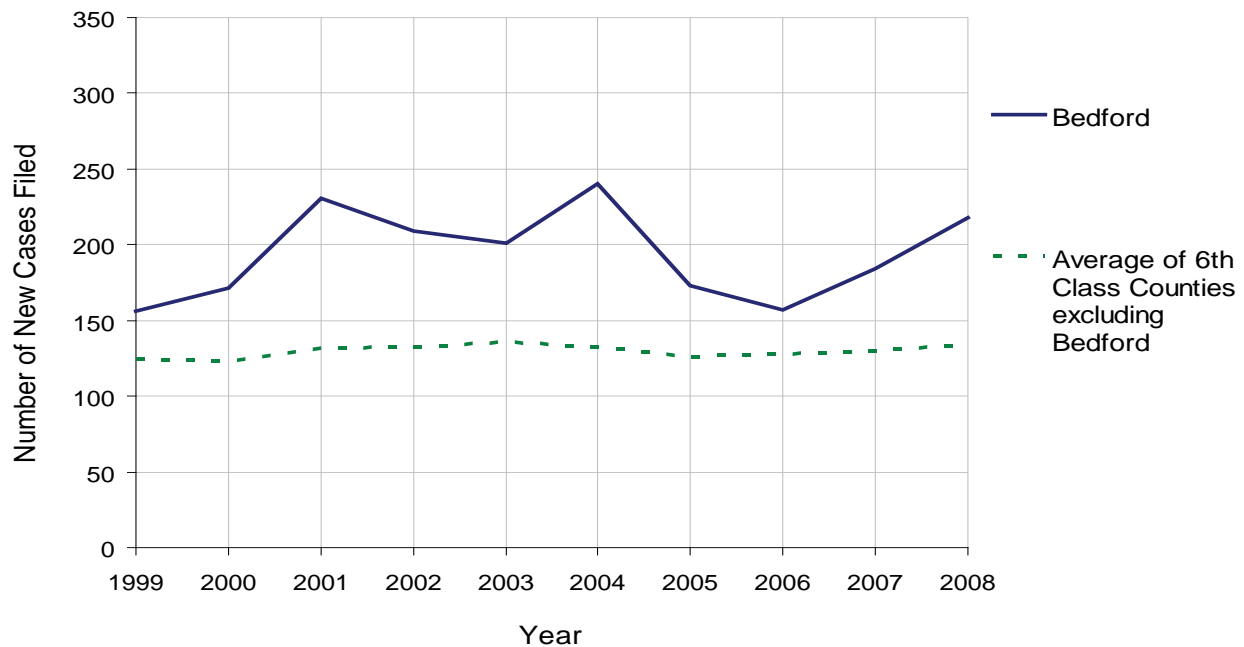
BEDFORD COUNTY

2008 Population Estimate: 49,727
 Class of County: 6th
 No. of Common Pleas Court Judgeships: 2



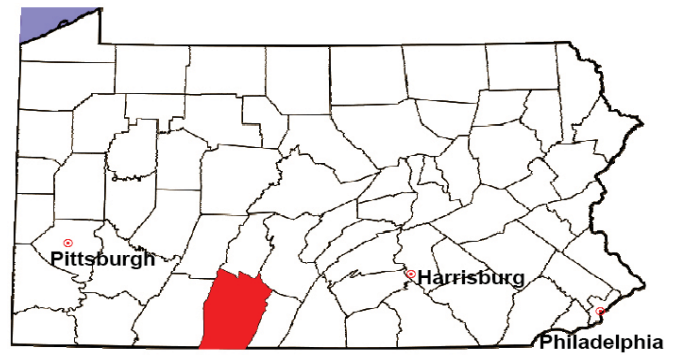
2008 Protection From Abuse	No. of Petitions	%
Cases Pending 1/1/08	14	
New Cases Filed in '08	218	
Cases Available for Processing	232	
Processed By:		
Final Order After Hearing	34	15.2%
Final Order by Stipulation or Agreement	110	49.1%
Dismissal	29	12.9%
Withdrawal	49	21.9%
Other	2	0.9%
Cases Processed	224	100.0%
Cases Pending 12/31/08	8	

PFA New Cases Filed, 1999-2008



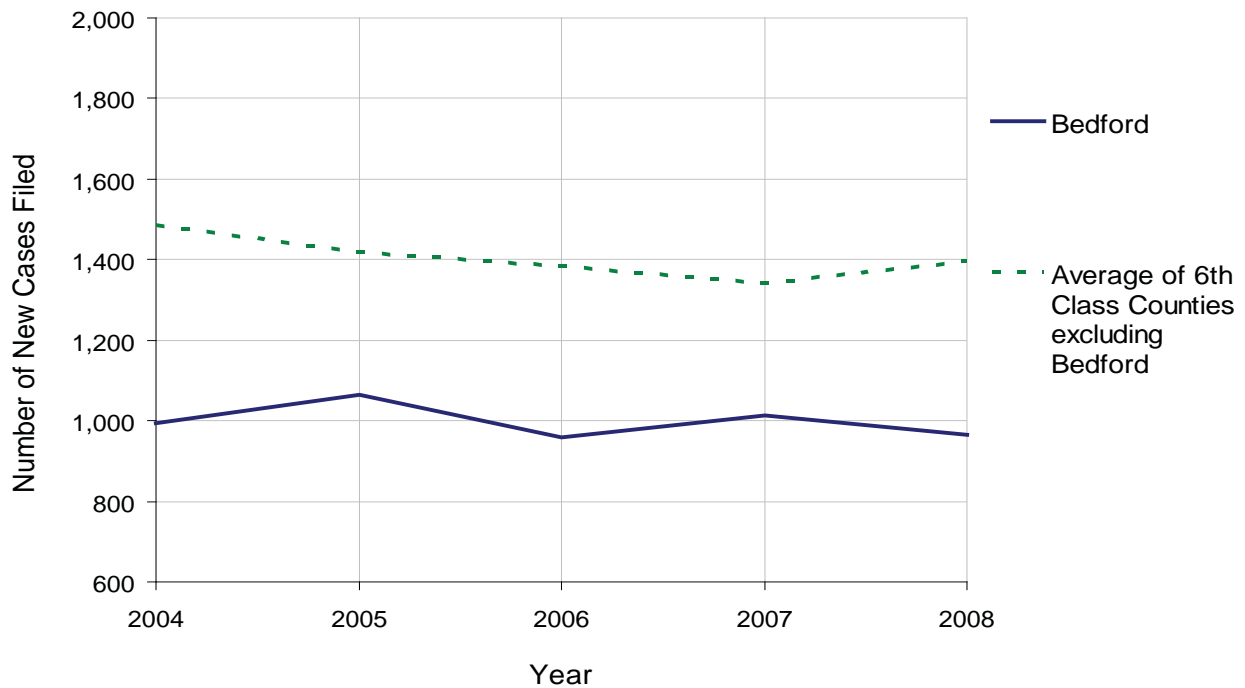
BEDFORD COUNTY

2008 Population Estimate: 49,727
 Class of County: 6th
 No. of Common Pleas Court Judgeships: 2



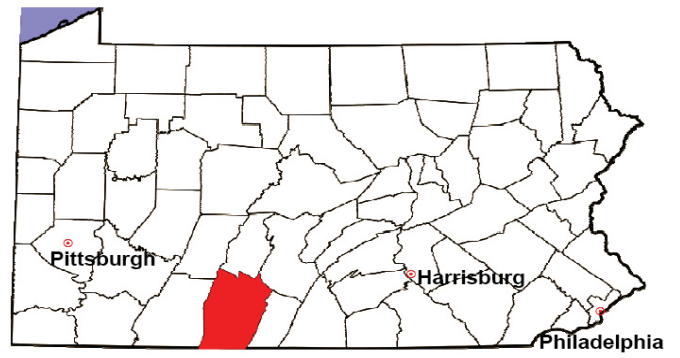
2008 Spousal & Child Support	No. of Petitions	%
Cases Pending 1/1/08	201	
New Cases Filed in '08	964	
Dockets Transferred In (+)	7	
Dockets Transferred Out (-)	10	
Cases Available for Processing	1,162	
Processed By:		
Judge	91	9.5%
Intake Officer	867	90.5%
Hearing Officer	0	0.0%
Other	0	0.0%
Cases Processed	958	100.0%
Cases Pending 12/31/08	204	

Spousal & Child Support New Cases Filed, 1998-2008



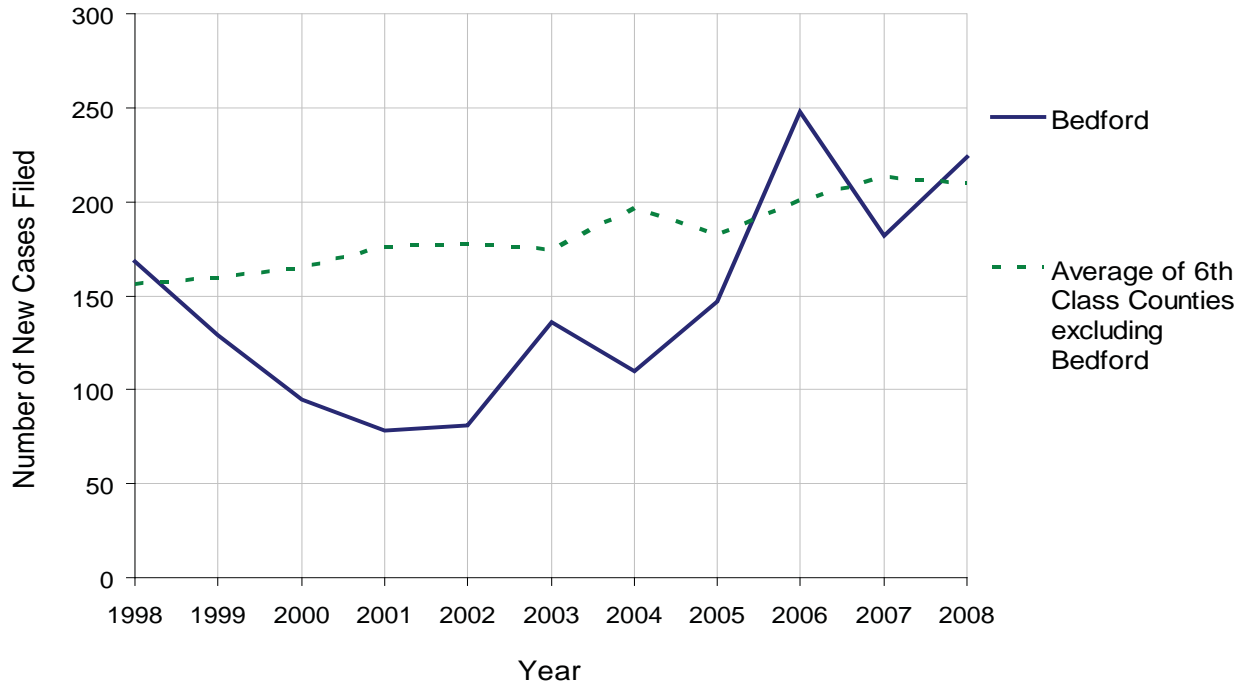
BEDFORD COUNTY

2008 Population Estimate: 49,727
 Class of County: 6th
 No. of Common Pleas Court Judgeships: 2



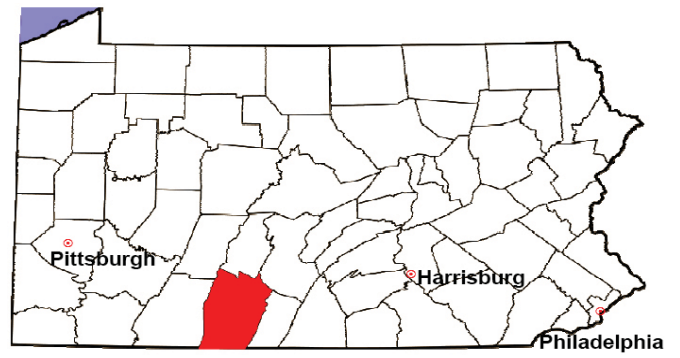
2008 Custody/Partial Custody/Visitation	No. of Petitions	%
Cases Pending 1/1/08	46	
New Cases Filed in '08	224	
Cases Available for Processing	270	
Processed By:		
Judge	206	93.6%
Non-Judicial Officer	0	0.0%
Other	14	6.4%
Cases Processed	220	100.0%
Cases Pending 12/31/08	50	

Custody/Partial Custody/Visitation New Cases Filed
 1998-2008



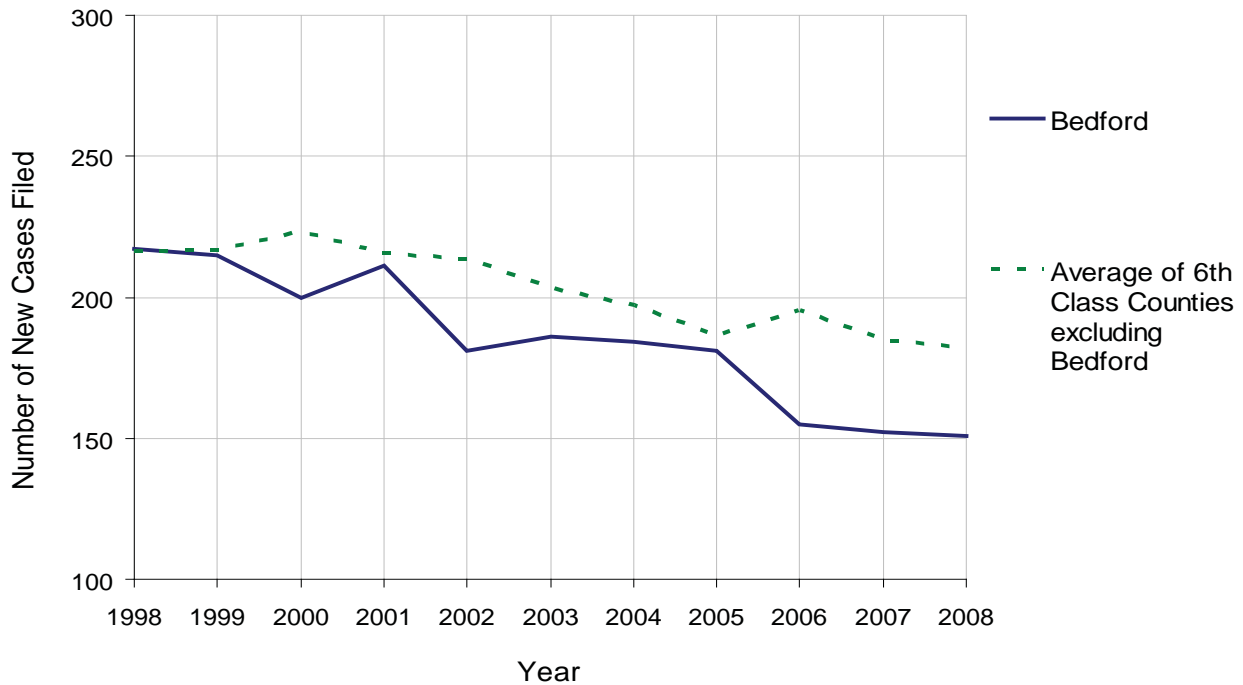
BEDFORD COUNTY

2008 Population Estimate: 49,727
 Class of County: 6th
 No. of Common Pleas Court Judgeships: 2



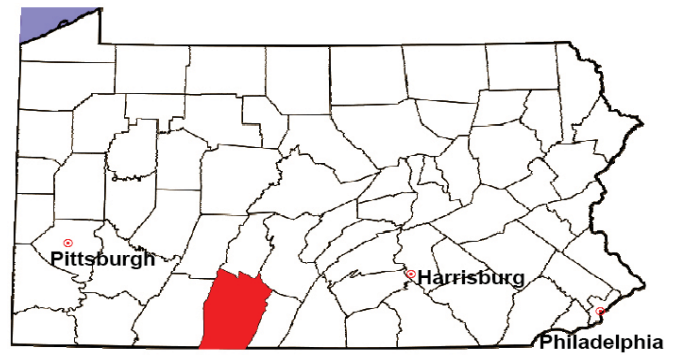
2008 Divorce	No. of Petitions	%
Cases Pending 1/1/08	319	
New Cases Filed in '08	151	
Cases Available for Processing	470	
Processed By:		
Contested Before a Judge	1	0.7%
Contested Before a Master	0	0.0%
Uncontested	117	79.1%
Other	30	20.3%
Cases Processed	148	100.0%
Cases Pending 12/31/08	322	

Divorce New Cases Filed, 1998-2008



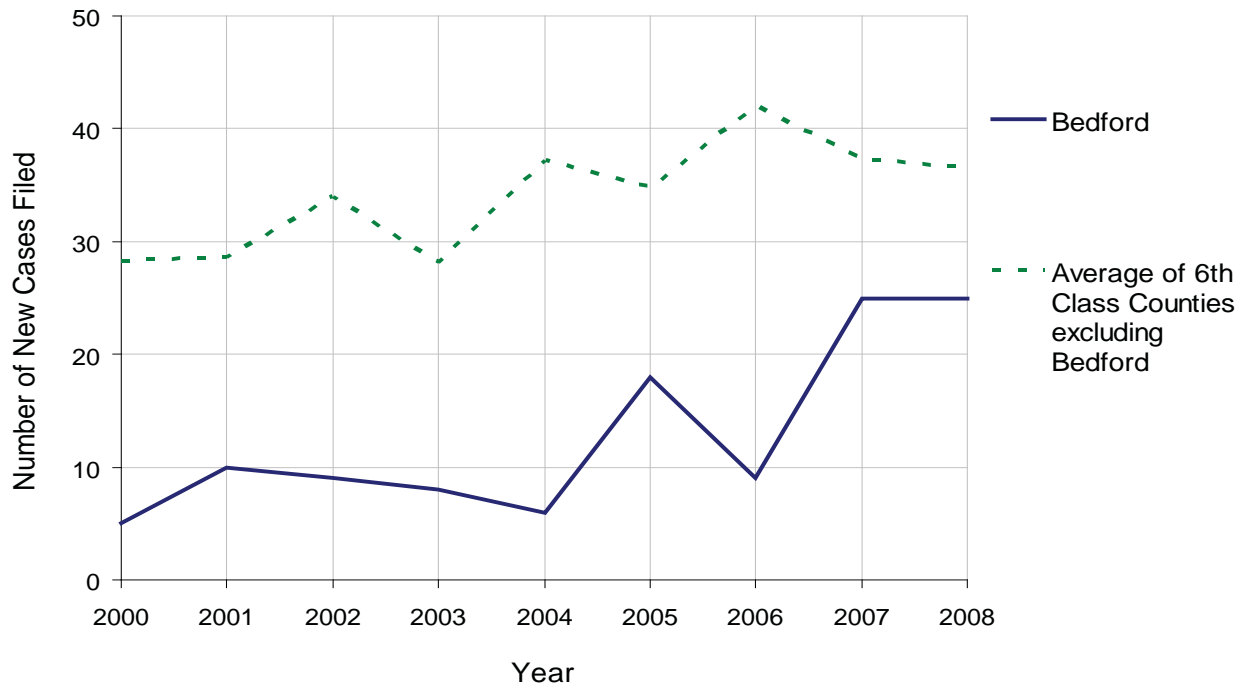
BEDFORD COUNTY

2008 Population Estimate: 49,727
 Class of County: 6th
 No. of Common Pleas Court Judgeships: 2



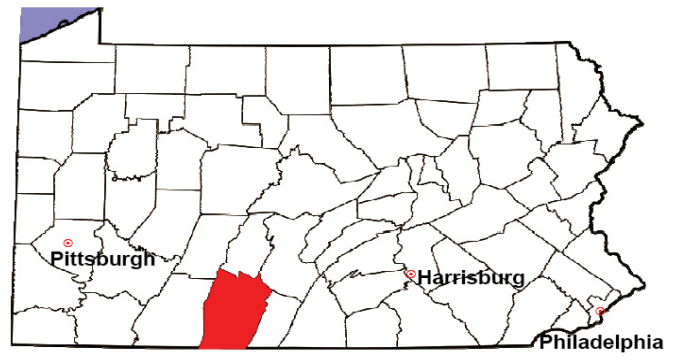
2008 Juvenile Dependency Abuse/Neglect	No. of Petitions	%
Cases Pending 1/1/08	5	
New Cases Filed in '08	25	
Cases Available for Processing	30	
Processed By:		
Judge	26	92.9%
Non-Judicial Officer	0	0.0%
Other	2	7.1%
Cases Processed	28	100.0%
Cases Pending 12/31/08	2	

Abuse/Neglect New Cases Filed, 2000-2008



BEDFORD COUNTY

2008 Population Estimate: 49,727
 Class of County: 6th
 No. of Common Pleas Court Judgeships: 2



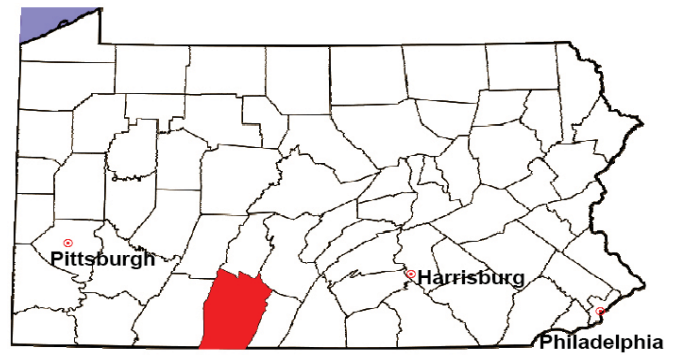
2008 Juvenile Dependency Status Offenses	No. of Petitions	%
Cases Pending 1/1/08	0	
New Cases Filed in '08	3	
Cases Available for Processing	3	
Processed By:		
Judge	3	100.0%
Non-Judicial Officer	0	0.0%
Other	0	0.0%
Cases Processed	3	100.0%
Cases Pending 12/31/08	0	

Status Offenses New Cases Filed, 2000-2008



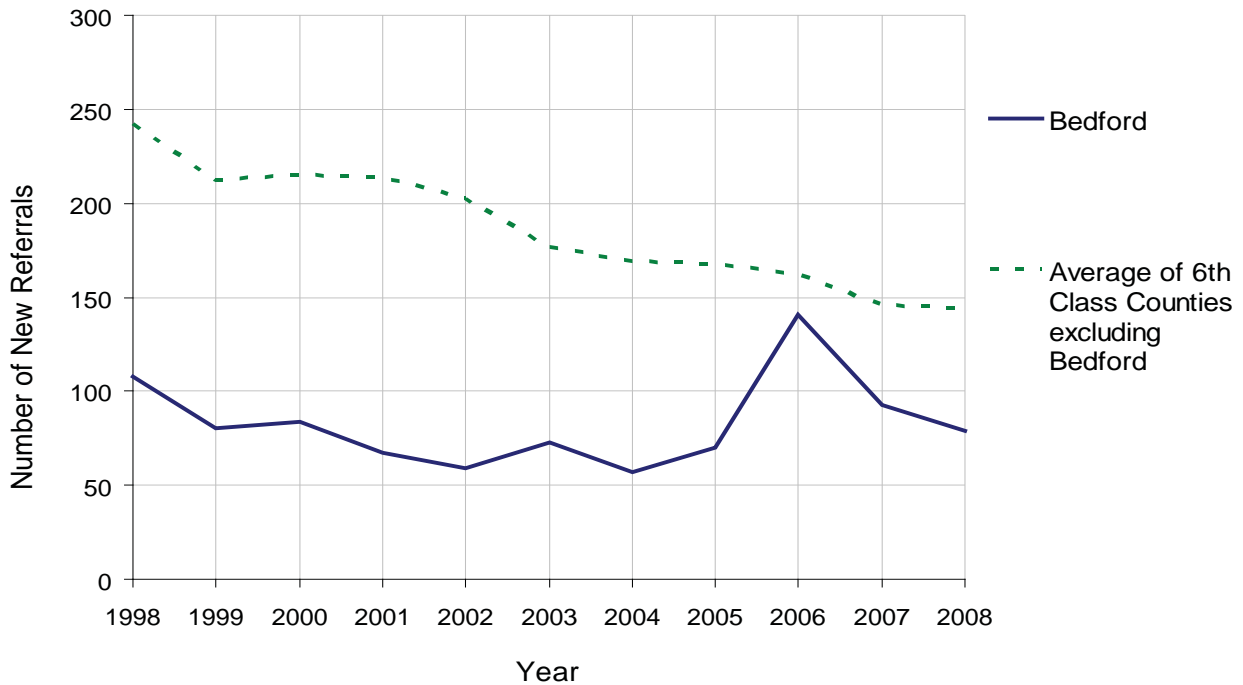
BEDFORD COUNTY

2008 Population Estimate: 49,727
 Class of County: 6th
 No. of Common Pleas Court Judgeships: 2



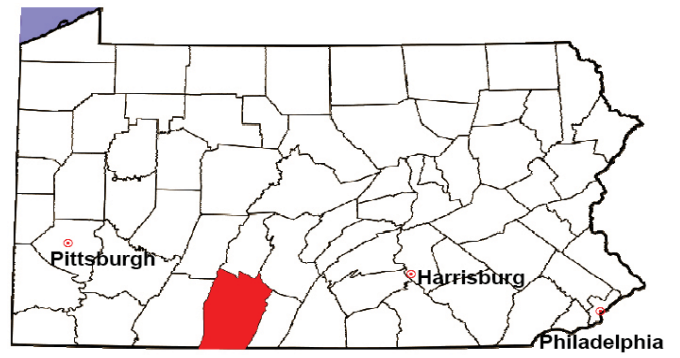
2008 Juvenile Delinquency	No. of Referrals	%
Cases Pending 1/1/08	27	
New Referrals in '08	79	
Cases Available for Processing	106	
Processed By:		
Judge	69	77.5%
Non-Judicial Officer	20	22.5%
Other	0	0.0%
Cases Processed	89	100.0%
Cases Pending 12/31/08	17	

Juvenile Delinquency New Referrals, 1998-2008



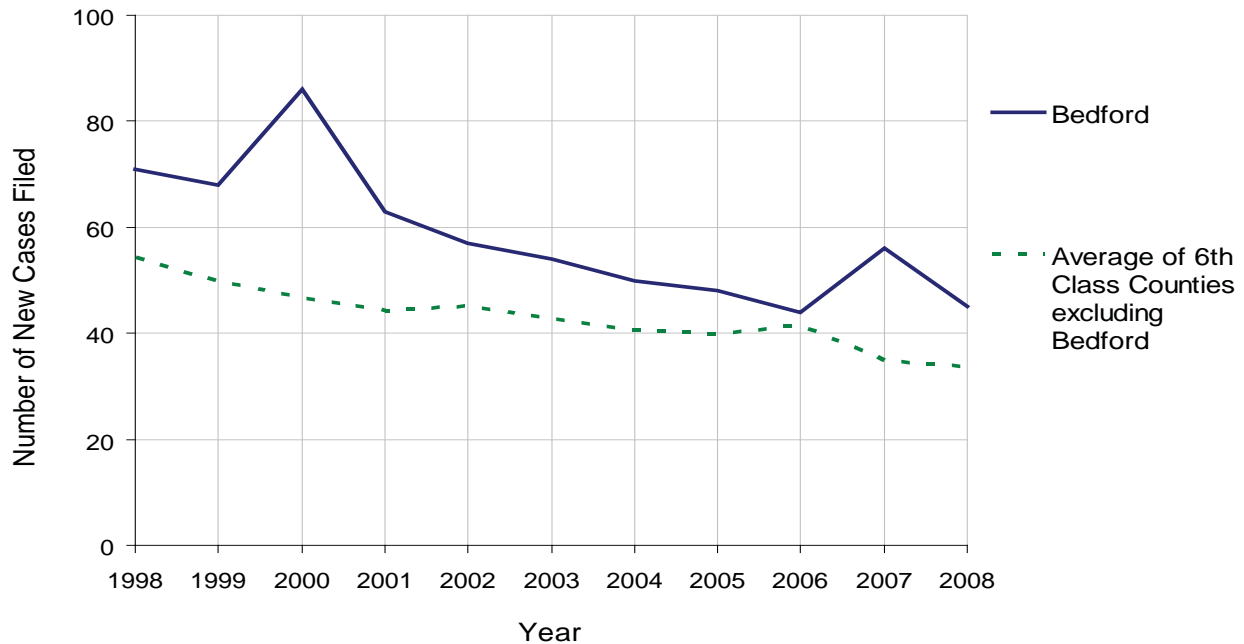
BEDFORD COUNTY

2008 Population Estimate: 49,727
 Class of County: 6th
 No. of Common Pleas Court Judgeships: 2



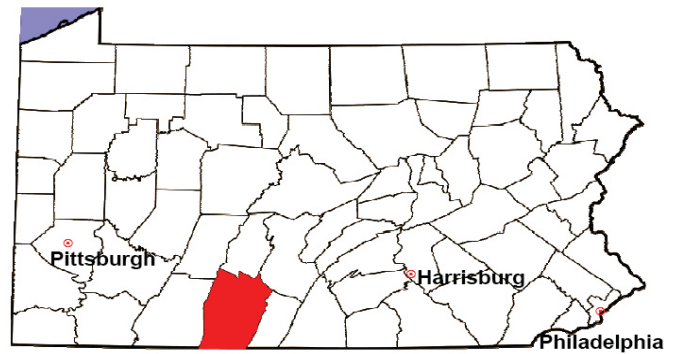
2008 Accounts	No. of Accounts	%
Cases Pending 1/1/08	10	
New Cases Filed in '08	45	
Cases Available for Processing	55	
Processed By:		
Contested before a Judge	2	4.4%
Contested before a Non-Judicial Officer	0	0.0%
Uncontested	43	95.6%
Other	0	0.0%
Cases Processed	45	100.0%
Cases Pending 12/31/08	10	

Accounts New Cases Filed, 1998-2008



BEDFORD COUNTY

2008 Population Estimate: 49,727
 Class of County: 6th
 No. of Common Pleas Court Judgeships: 2

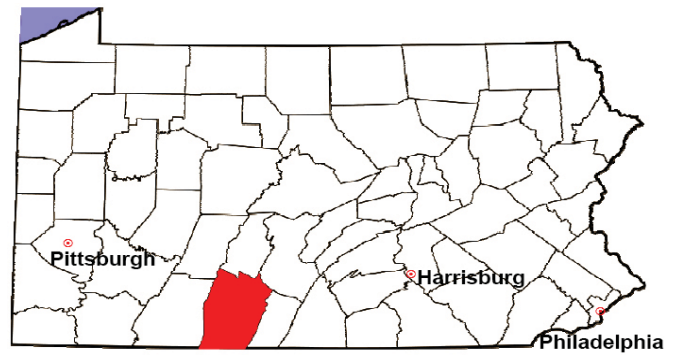


2008 Adoptions		No. of Cases	%
Cases Pending 1/1/08		6	
New Cases Filed in '08		13	
Cases Available for Processing		19	
Processed By:			
Contested before a Judge	Granted	0	0.0%
	Denied	0	0.0%
Uncontested	Granted	14	100.0%
	Denied	0	0.0%
Other		0	0.0%
Cases Processed		14	100.0%
Cases Pending 12/31/08		5	

Note: Prior to 2008, each petition was counted as one new case, regardless of the number of children listed on the petition. Starting in 2008, each child listed on a petition is counted as a separate case. Therefore, statistics for 2008 should not be compared with those for previous years.

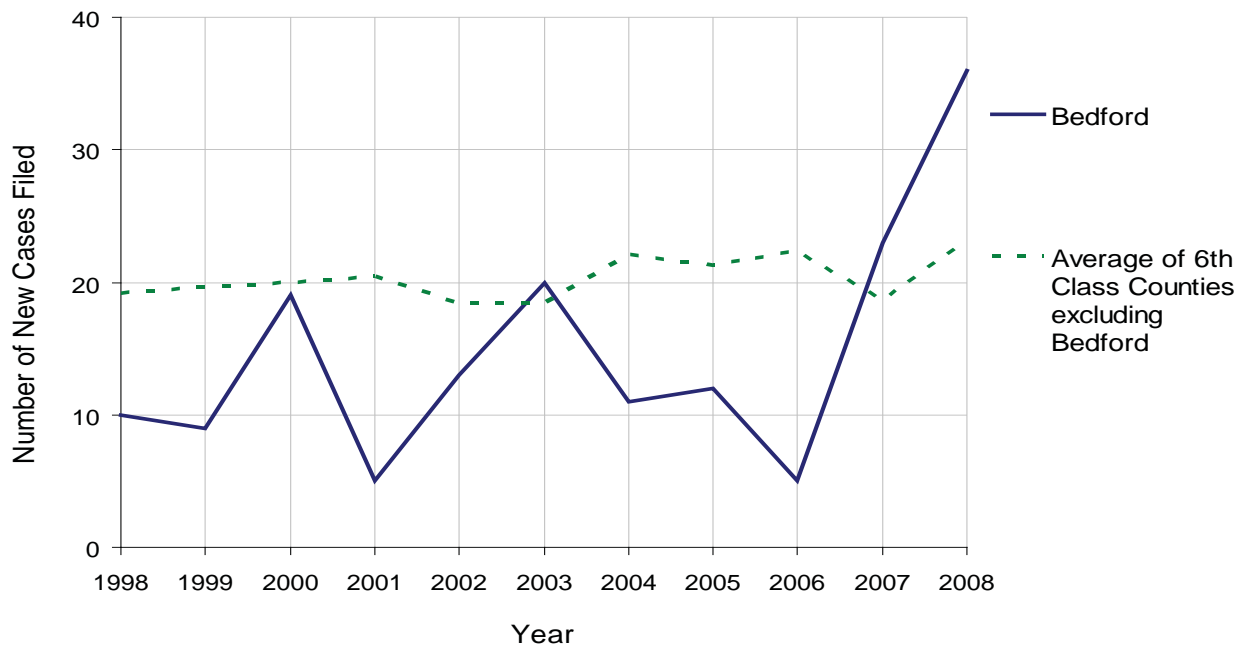
BEDFORD COUNTY

2008 Population Estimate: 49,727
 Class of County: 6th
 No. of Common Pleas Court Judgeships: 2



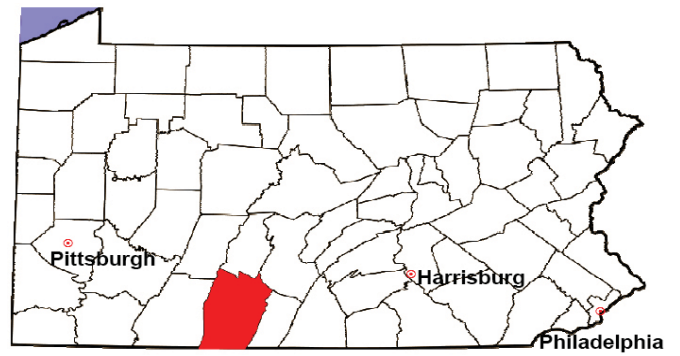
2008 Relinquishments/Terminations	No. of Petitions	%
Cases Pending 1/1/08	7	
New Cases Filed in '08	36	
Cases Available for Processing	43	
Processed By:		
Contested before a Judge	2	8.7%
Uncontested	21	91.3%
Other	0	0.0%
Cases Processed	23	100.0%
Cases Pending 12/31/08	20	

Relinquishments/Terminations New Cases Filed, 1998-2008



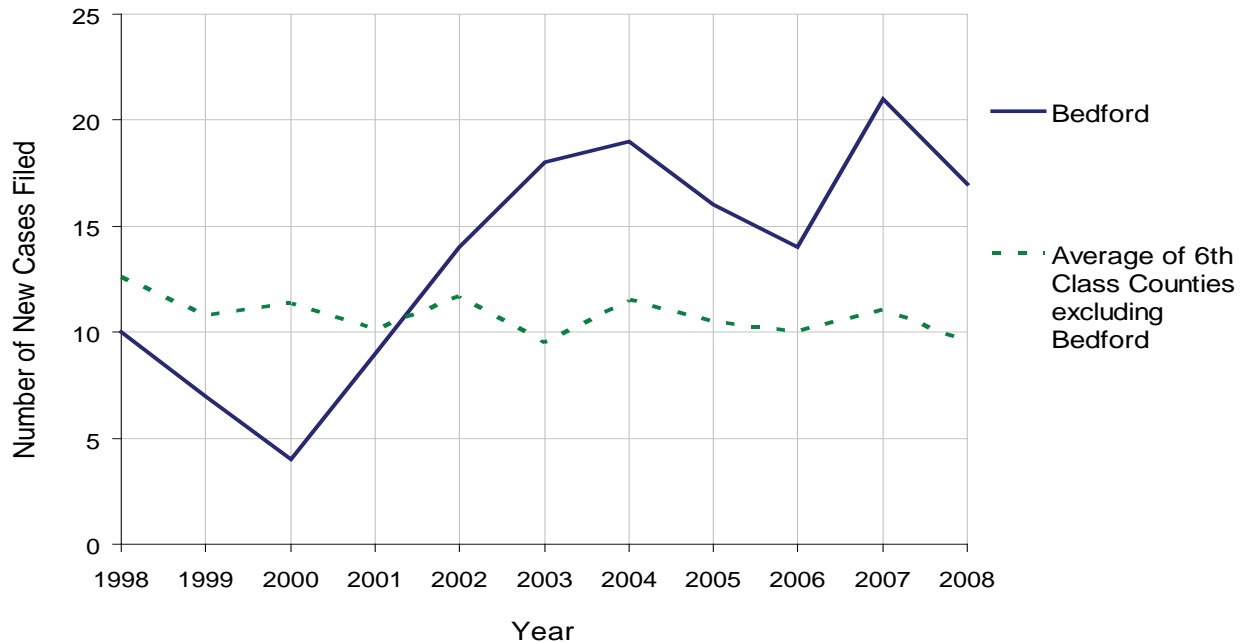
BEDFORD COUNTY

2008 Population Estimate: 49,727
 Class of County: 6th
 No. of Common Pleas Court Judgeships: 2



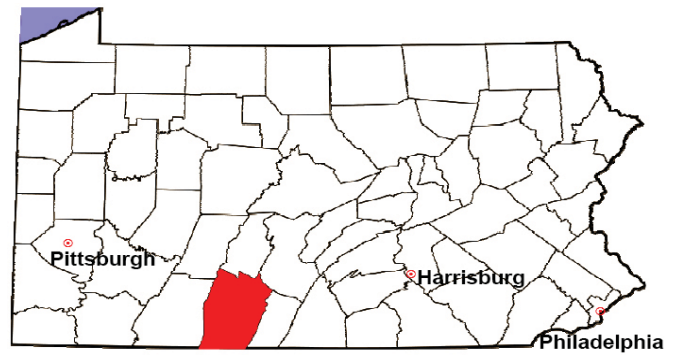
2008 Appointment of Guardians	No. of Petitions	%
Cases Pending 1/1/08	4	
New Cases Filed in '08	17	
Cases Available for Processing	21	
Processed By:		
Contested before a Judge	0	0.0%
Uncontested	13	68.4%
Other	6	31.6%
Cases Processed	19	100.0%
Cases Pending 12/31/08	2	

Appointment of Guardians New Cases Filed, 1998-2008



BEDFORD COUNTY

2008 Population Estimate: 49,727
 Class of County: 6th
 No. of Common Pleas Court Judgeships: 2



2008 Jury Activity & Performance Measures		
A. Juror Days	1,595	
B. Number Sent to Voir Dire	1,081	
Voir Dire Attendance Rate $(B/A * 100)$		67.8%
C. Number of Voir Dires Started	25	
Juror Days Per Voir Dire Starts (A/C)		64
D. Number of Jurors Selected	238	
Juror Selection Rate $(D/B * 100)$		22.0%
E. Number of Jury Trials Started	12	
Juror Days Per Trial Starts (A/E)		133
Number of Voir Dires Not Resulting in Trial $(C-E)$		13
Percent Voir Dires Not Resulting in Trial $(C-E)/C * 100$		52.0%
F. Pool Days	18	
G. Zero Panel Days	1	
Percent Zero Panel Days $(G/F * 100)$		5.6%
H. Total Juror Fees Incurred	\$38,490	
Average Juror Fees Per Trial (H/E)		\$3,208

Average Juror Fees Per Trial, 1998-2008

