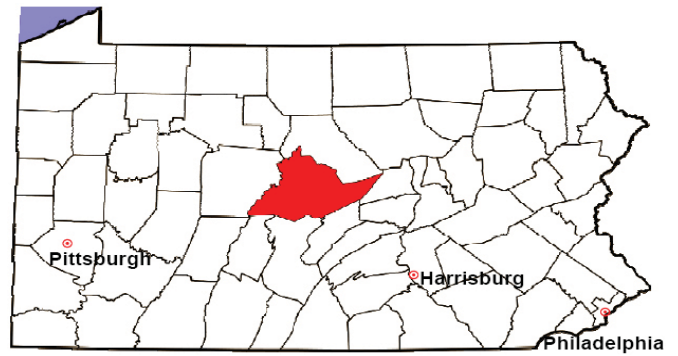


CENTRE COUNTY

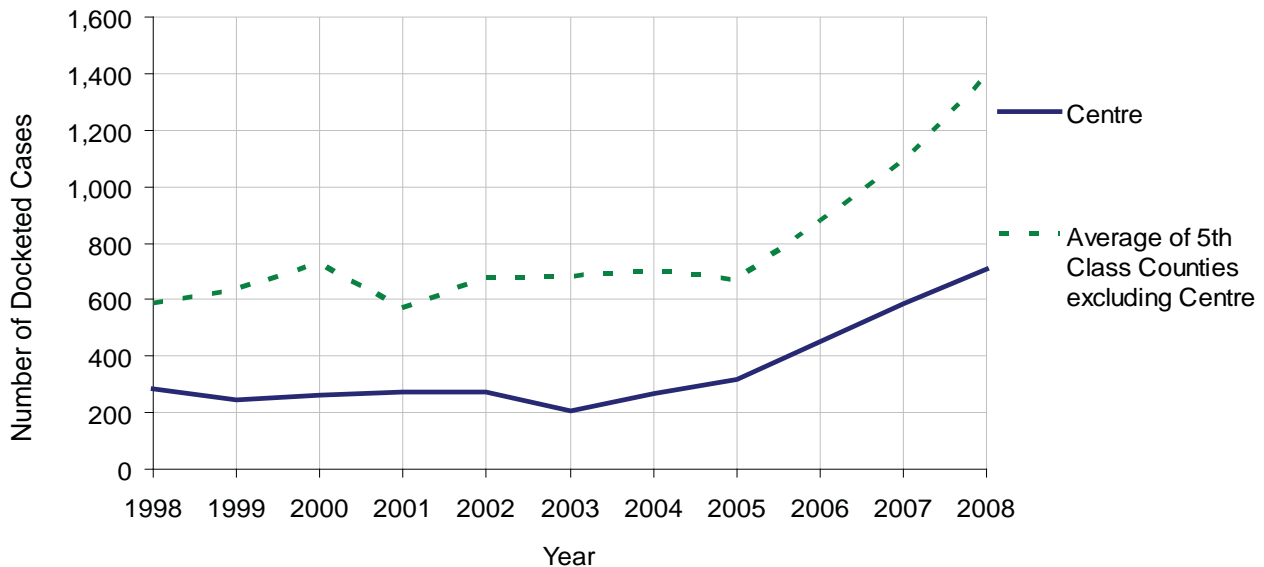
2008 Population Estimate: 144,779
 Class of County: 5th
 No. of Common Pleas Court Judgeships: 4



2008 Civil		Civil Action		
Docketed Cases		708		
Arbitrated Cases		92		
Trial-Ready Cases:		Civil Action	Other	Total
Cases Pending 1/1/08		148	16	164
Became Trial Ready in '08		138	22	160
Restored to Trial List		2	0	2
Appeals from Arbitration		21	0	21
Cases Available for Trial		309	38	347
Disposed By:				
Settlement		102	10	112
Non-Jury Trial		10	2	12
Jury Trial		3	1	4
Stricken from Trial List		6	1	7
Other		44	6	50
Cases Disposed		165	20	185
Cases Pending 12/31/08		144	18	162

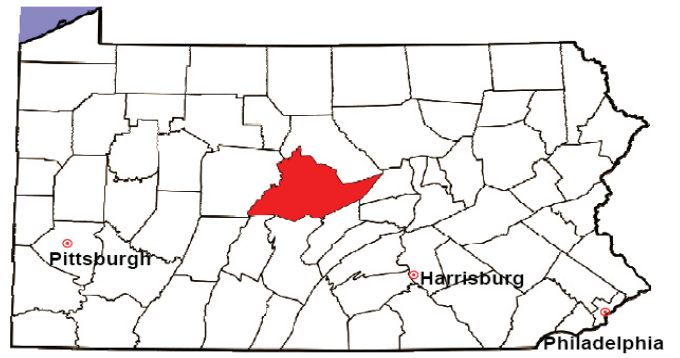
Age of Trial-Ready Cases as of 12/31/08 (Civil Action Only)		
0-6 months	73	51%
7-12 months	24	17%
13-18 months	19	13%
19-24 months	11	8%
25-30 months	6	4%
31-36 months	2	1%
Over 36 months	9	6%
Total	144	100%

Docketed Cases, 1998-2008



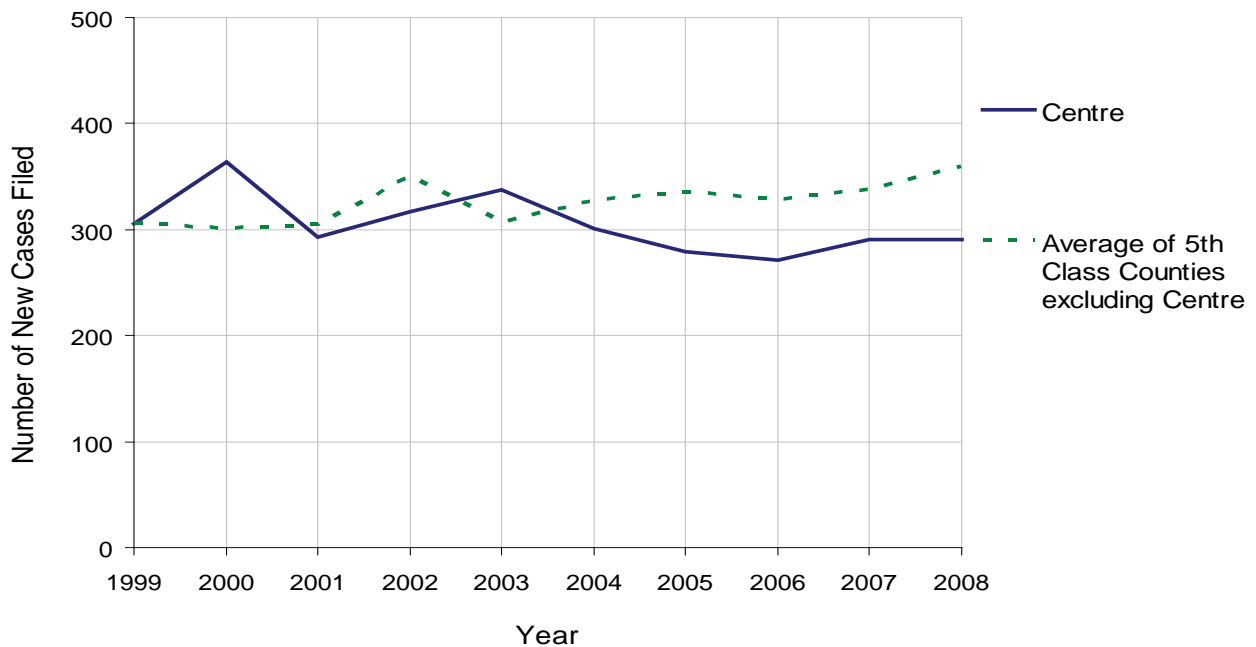
CENTRE COUNTY

2008 Population Estimate: 144,779
 Class of County: 5th
 No. of Common Pleas Court Judgeships: 4



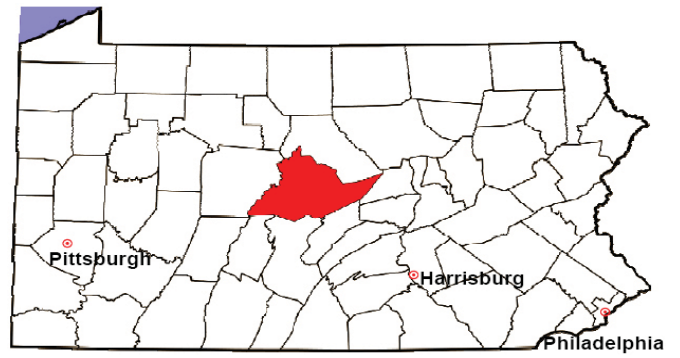
2008 Protection From Abuse	No. of Petitions	%
Cases Pending 1/1/08	18	
New Cases Filed in '08	291	
Cases Available for Processing	309	
Processed By:		
Final Order After Hearing	53	18.2%
Final Order by Stipulation or Agreement	140	47.9%
Dismissal	29	9.9%
Withdrawal	68	23.3%
Other	2	0.7%
Cases Processed	292	100.0%
Cases Pending 12/31/08	17	

PFA New Cases Filed, 1999-2008



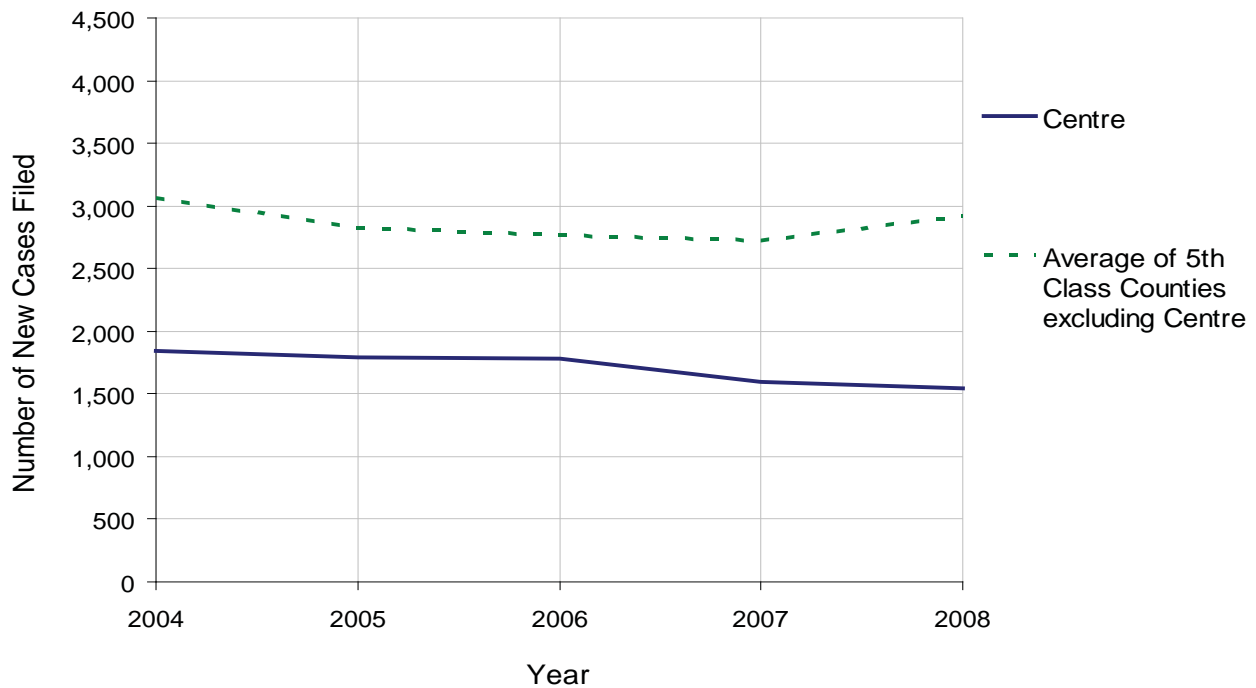
CENTRE COUNTY

2008 Population Estimate: 144,779
 Class of County: 5th
 No. of Common Pleas Court Judgeships: 4



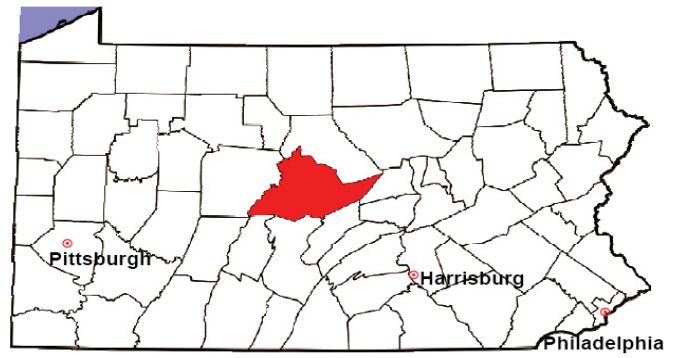
2008 Spousal & Child Support	No. of Petitions	%
Cases Pending 1/1/08	185	
New Cases Filed in '08	1,544	
Dockets Transferred In (+)	14	
Dockets Transferred Out (-)	10	
Cases Available for Processing	1,733	
Processed By:		
Judge	68	4.3%
Intake Officer	1,513	95.7%
Hearing Officer	0	0.0%
Other	0	0.0%
Cases Processed	1,581	100.0%
Cases Pending 12/31/08	152	

Spousal & Child New Cases Filed, 1998-2008



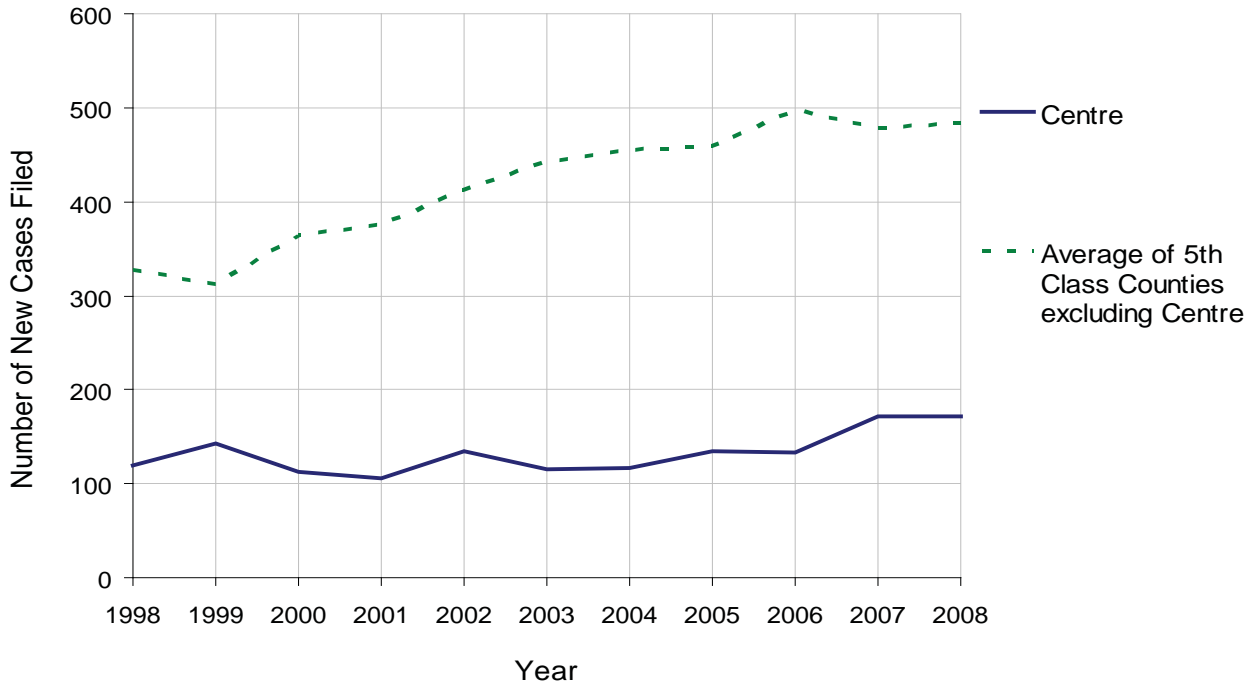
CENTRE COUNTY

2008 Population Estimate: 144,779
 Class of County: 5th
 No. of Common Pleas Court Judgeships: 4



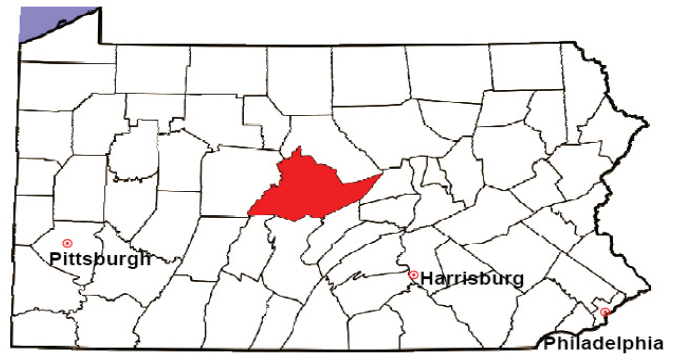
2008 Custody/Partial Custody/Visitation	No. of Petitions	%
Cases Pending 1/1/08	2	
New Cases Filed in '08	172	
Cases Available for Processing	174	
Processed By:		
Judge	174	100.0%
Non-Judicial Officer	0	0.0%
Other	0	0.0%
Cases Processed	174	100.0%
Cases Pending 12/31/08	0	

Custody/Partial Custody/Visitation New Cases Filed
 1998-2008



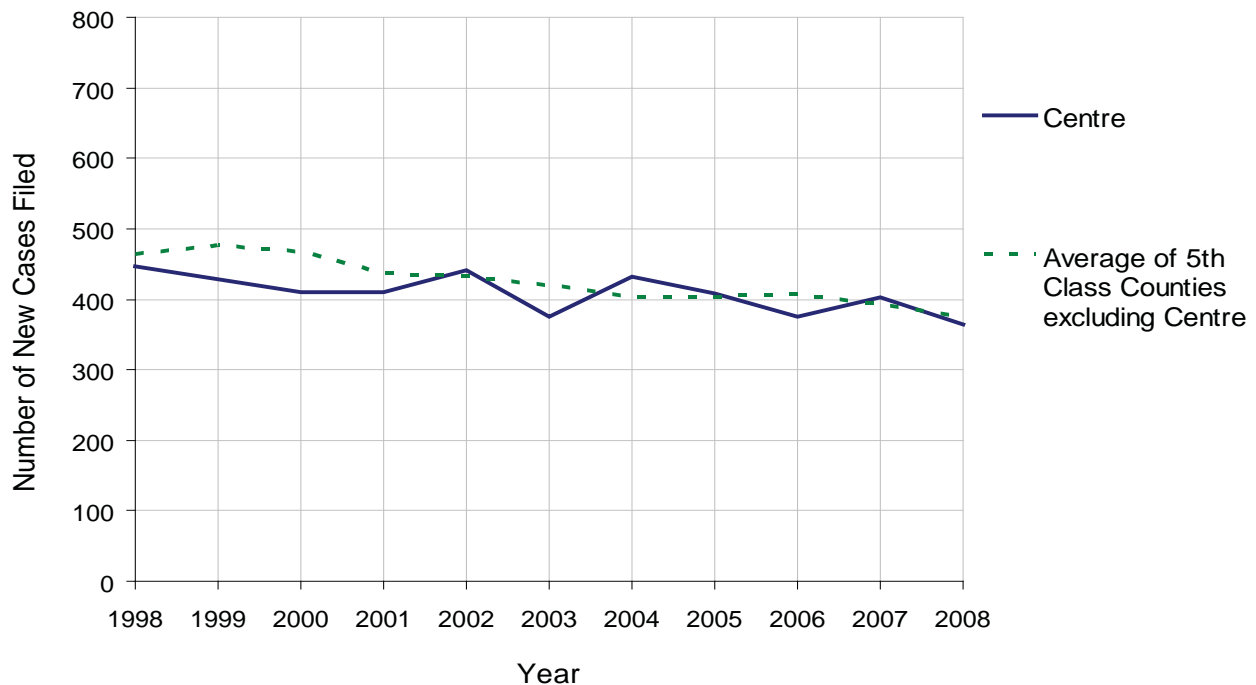
CENTRE COUNTY

2008 Population Estimate: 144,779
 Class of County: 5th
 No. of Common Pleas Court Judgeships: 4



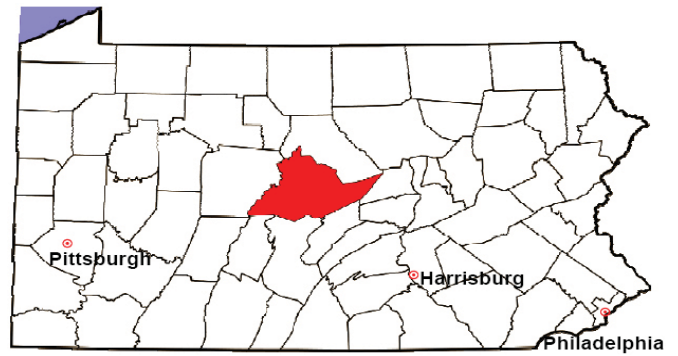
2008 Divorce	No. of Petitions	%
Cases Pending 1/1/08	902	
New Cases Filed in '08	365	
Cases Available for Processing	1,267	
Processed By:		
Contested Before a Judge	2	0.6%
Contested Before a Master	0	0.0%
Uncontested	303	91.8%
Other	25	7.6%
Cases Processed	330	100.0%
Cases Pending 12/31/08	937	

Divorce New Cases Filed, 1998-2008



CENTRE COUNTY

2008 Population Estimate: 144,779
 Class of County: 5th
 No. of Common Pleas Court Judgeships: 4



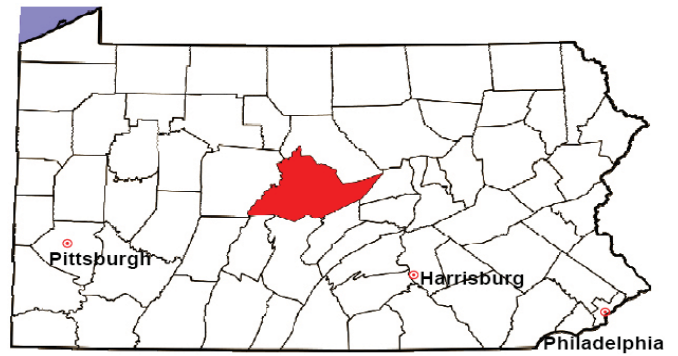
2008 Juvenile Dependency Abuse/Neglect	No. of Petitions	%
Cases Pending 1/1/08	0	
New Cases Filed in '08	7	
Cases Available for Processing	7	
Processed By:		
Judge	7	100.0%
Non-Judicial Officer	0	0.0%
Other	0	0.0%
Cases Processed	7	100.0%
Cases Pending 12/31/08	0	

Abuse/Neglect New Cases Filed, 2000-2008



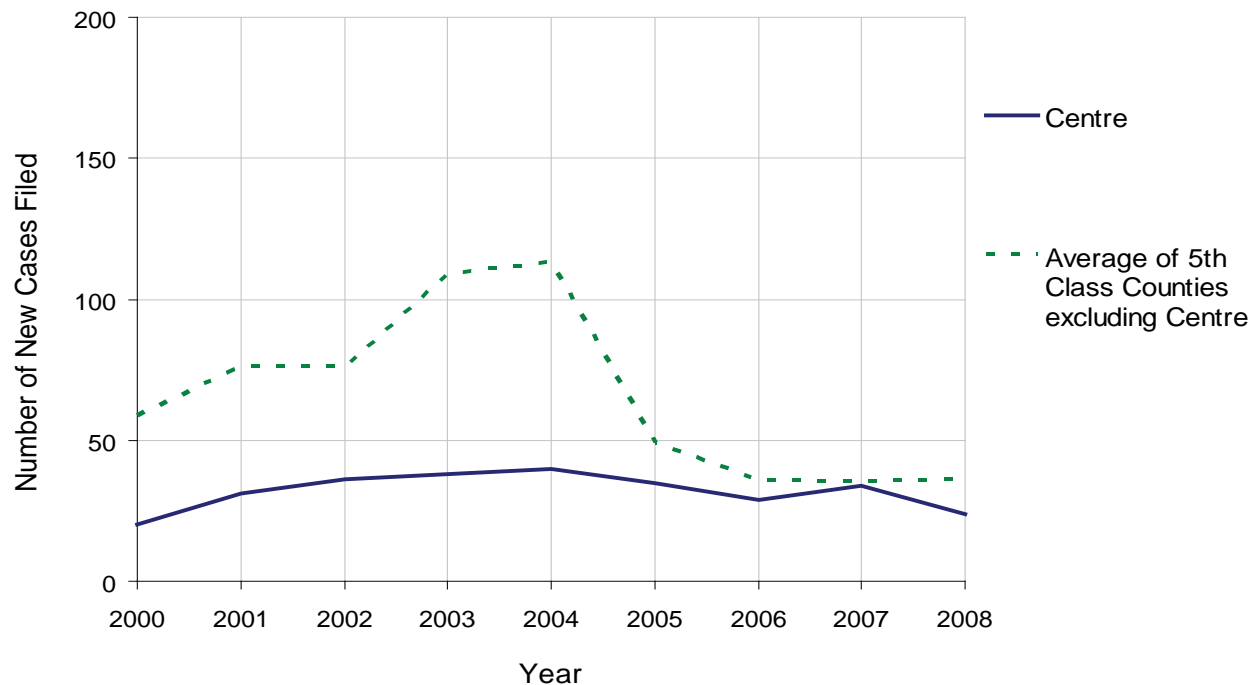
CENTRE COUNTY

2008 Population Estimate: 144,779
 Class of County: 5th
 No. of Common Pleas Court Judgeships: 4



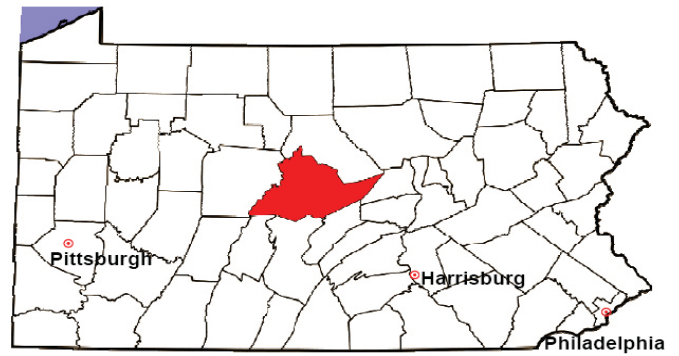
2008 Juvenile Dependency Status Offenses	No. of Petitions	%
Cases Pending 1/1/08	13	
New Cases Filed in '08	24	
Cases Available for Processing	37	
Processed By:		
Judge	24	100.0%
Non-Judicial Officer	0	0.0%
Other	0	0.0%
Cases Processed	24	100.0%
Cases Pending 12/31/08	13	

Status Offenses New Cases Filed, 2000-2008



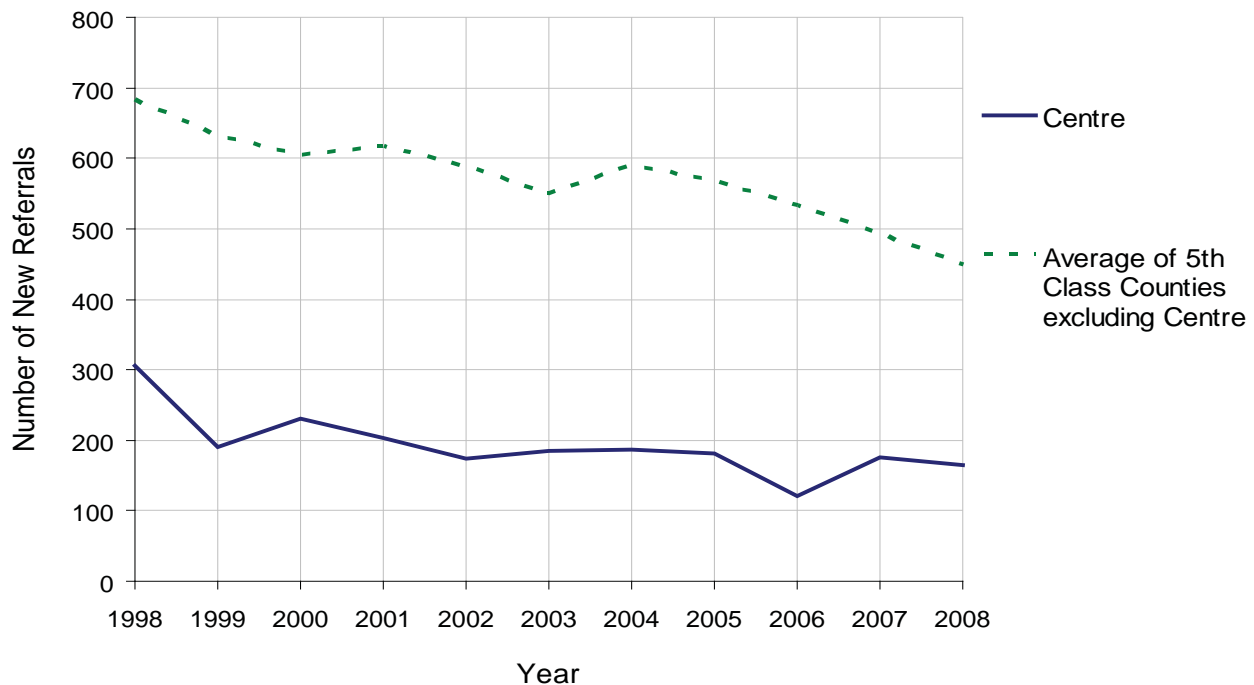
CENTRE COUNTY

2008 Population Estimate: 144,779
 Class of County: 5th
 No. of Common Pleas Court Judgeships: 4



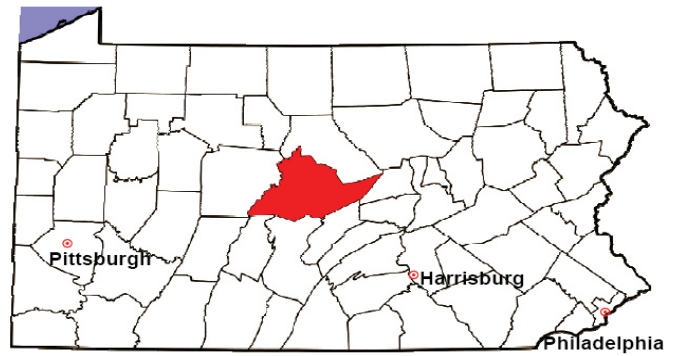
2008 Juvenile Delinquency	No. of Referrals	%
Cases Pending 1/1/08	159	
New Referrals in '08	165	
Cases Available for Processing	324	
Processed By:		
Judge	150	92.6%
Non-Judicial Officer	12	7.4%
Other	0	0.0%
Cases Processed	162	100.0%
Cases Pending 12/31/08	162	

Juvenile Delinquency New Referrals, 1998-2008



CENTRE COUNTY

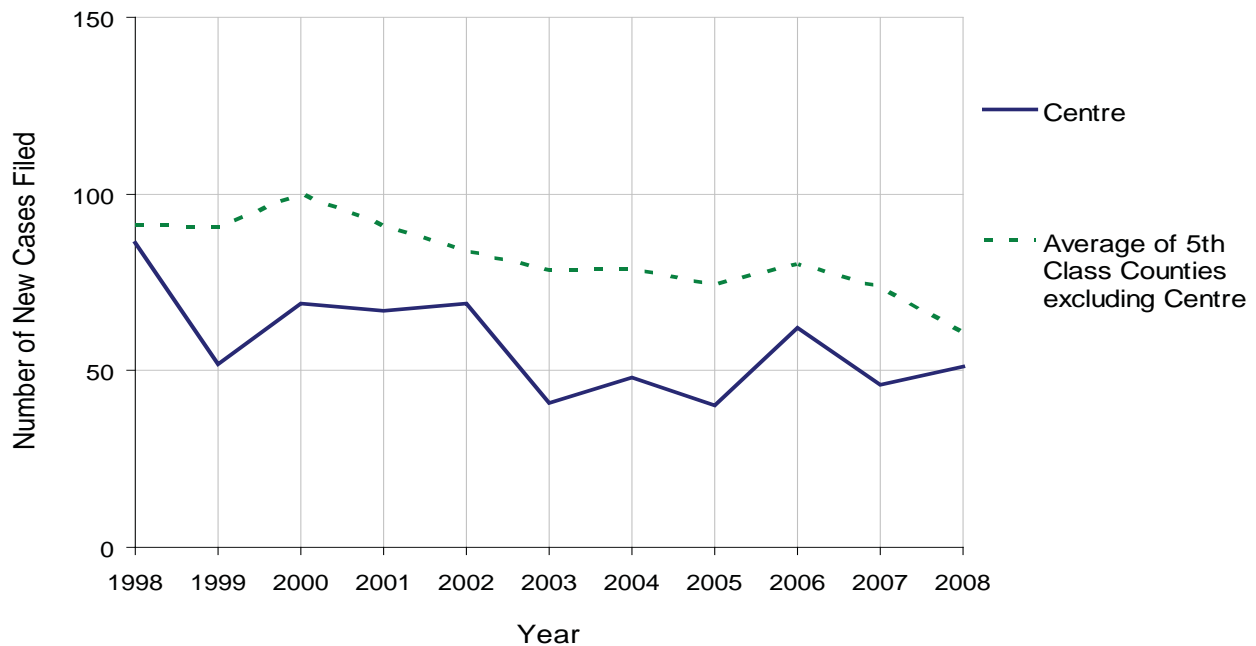
2008 Population Estimate: 144,779
 Class of County: 5th
 No. of Common Pleas Court Judgeships: 4



2008 Accounts	No. of Accounts	%
Cases Pending 1/1/08	0 ^(R)	
New Cases Filed in '08	51	
Cases Available for Processing	51	
Processed By:		
Contested before a Judge	1	2.2%
Contested before a Non-Judicial Officer	0	0.0%
Uncontested	44	97.8%
Other	0	0.0%
Cases Processed	45	100.0%
Cases Pending 12/31/08	6	

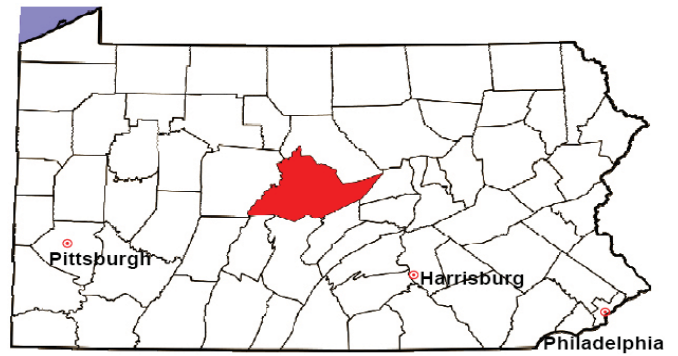
(R) - Revised

Accounts New Cases, 1998-2008



CENTRE COUNTY

2008 Population Estimate: 144,779
 Class of County: 5th
 No. of Common Pleas Court Judgeships: 4



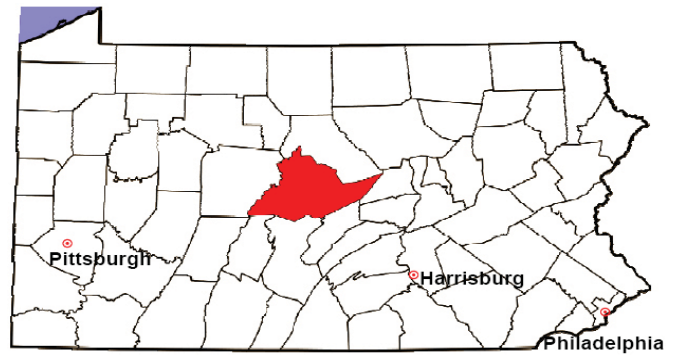
2008 Adoptions		No. of Cases	%
Cases Pending 1/1/08		0 ^(R)	
New Cases Filed in '08		70	
Cases Available for Processing		70	
Processed By:			
Contested before a Judge	Granted	0	0.0%
	Denied	0	0.0%
Uncontested	Granted	64	100.0%
	Denied	0	0.0%
Other		0	0.0%
Cases Processed		64	100.0%
Cases Pending 12/31/08		6	

(R) - Revised

Note: Prior to 2008, each petition was counted as one new case, regardless of the number of children listed on the petition. Starting in 2008, each child listed on a petition is counted as a separate case. Therefore, statistics for 2008 should not be compared with those for previous years.

CENTRE COUNTY

2008 Population Estimate: 144,779
 Class of County: 5th
 No. of Common Pleas Court Judgeships: 4



2008 Relinquishments/Terminations	No. of Petitions	%
Cases Pending 1/1/08	0 ^(R)	
New Cases Filed in '08	63	
Cases Available for Processing	63	
Processed By:		
Contested before a Judge	5	9.8%
Uncontested	46	90.2%
Other	0	0.0%
Cases Processed	51	100.0%
Cases Pending 12/31/08	12	

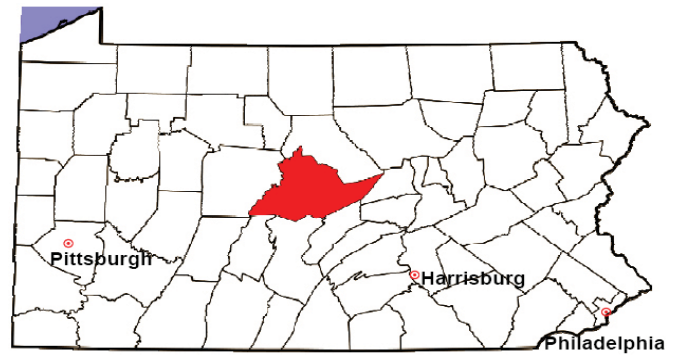
(R) - Revised

Relinquishments/Terminations New Cases Filed, 1998-2008



CENTRE COUNTY

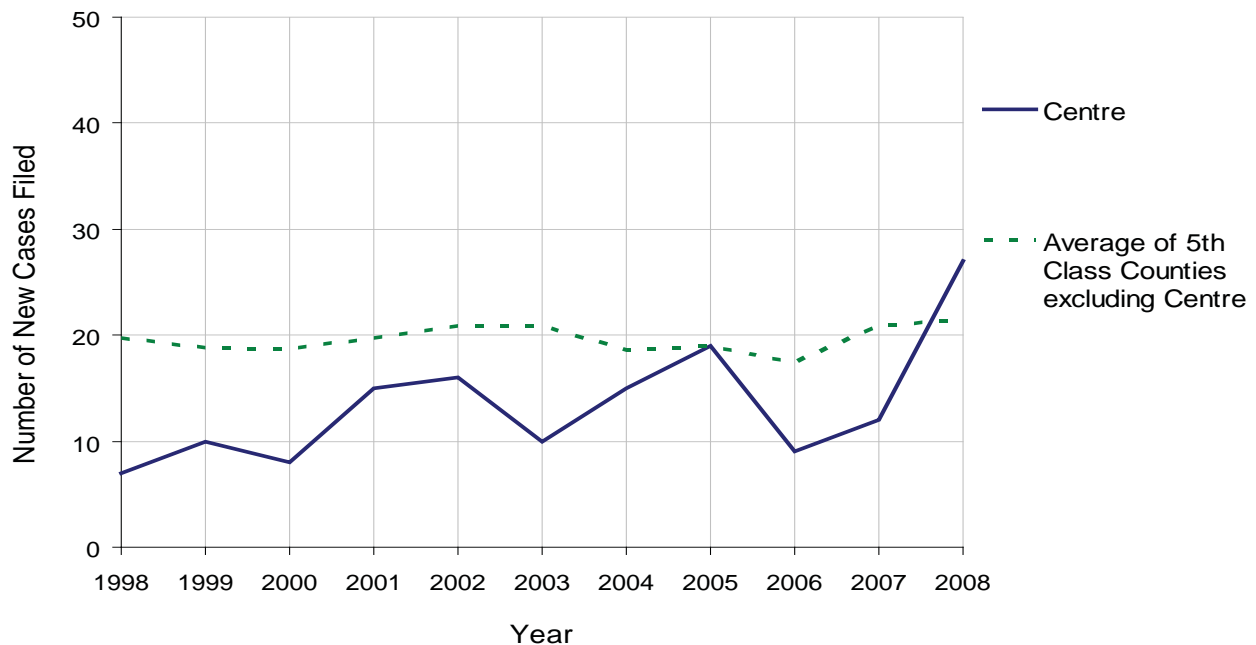
2008 Population Estimate: 144,779
 Class of County: 5th
 No. of Common Pleas Court Judgeships: 4



2008 Appointment of Guardians	No. of Petitions	%
Cases Pending 1/1/08	0 ^(R)	
New Cases Filed in '08	27	
Cases Available for Processing	27	
Processed By:		
Contested before a Judge	0	0.0%
Uncontested	25	100.0%
Other	0	0.0%
Cases Processed	25	100.0%
Cases Pending 12/31/08	2	

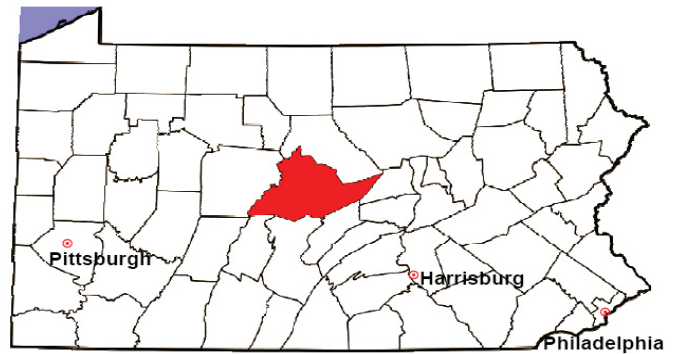
(R) - Revised

Appointment of Guardians New Cases Filed, 1998-2008



CENTRE COUNTY

2008 Population Estimate: 144,779
 Class of County: 5th
 No. of Common Pleas Court Judgeships: 4



2008 Jury Activity & Performance Measures		
A. Juror Days	1,563	
B. Number Sent to Voir Dire	1,821	
Voir Dire Attendance Rate $(B/A * 100)$		116.5%
C. Number of Voir Dires Started	73	
Juror Days Per Voir Dire Starts (A/C)		21
D. Number of Jurors Selected	1,086	
Juror Selection Rate $(D/B * 100)$		59.6%
E. Number of Jury Trials Started	31	
Juror Days Per Trial Starts (A/E)		50
Number of Voir Dires Not Resulting in Trial $(C-E)$		42
Percent Voir Dires Not Resulting in Trial $(C-E)/C * 100$		57.5%
F. Pool Days	9	
G. Zero Panel Days	0	
Percent Zero Panel Days $(G/F * 100)$		0.0%
H. Total Juror Fees Incurred	\$30,496	
Average Juror Fees Per Trial (H/E)		\$984

Average Juror Fees Per Trial, 1998-2008

