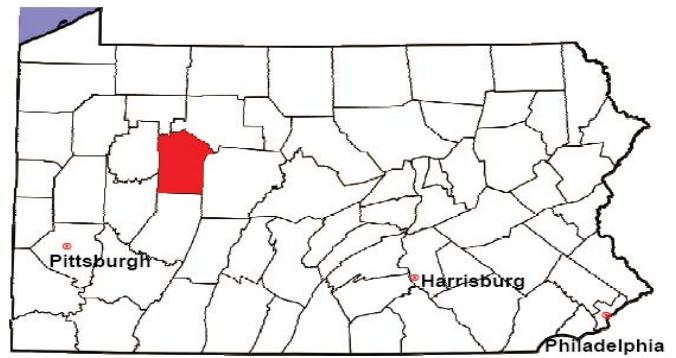


# JEFFERSON COUNTY

2008 Population Estimate: 45,105

Class of County: 6th

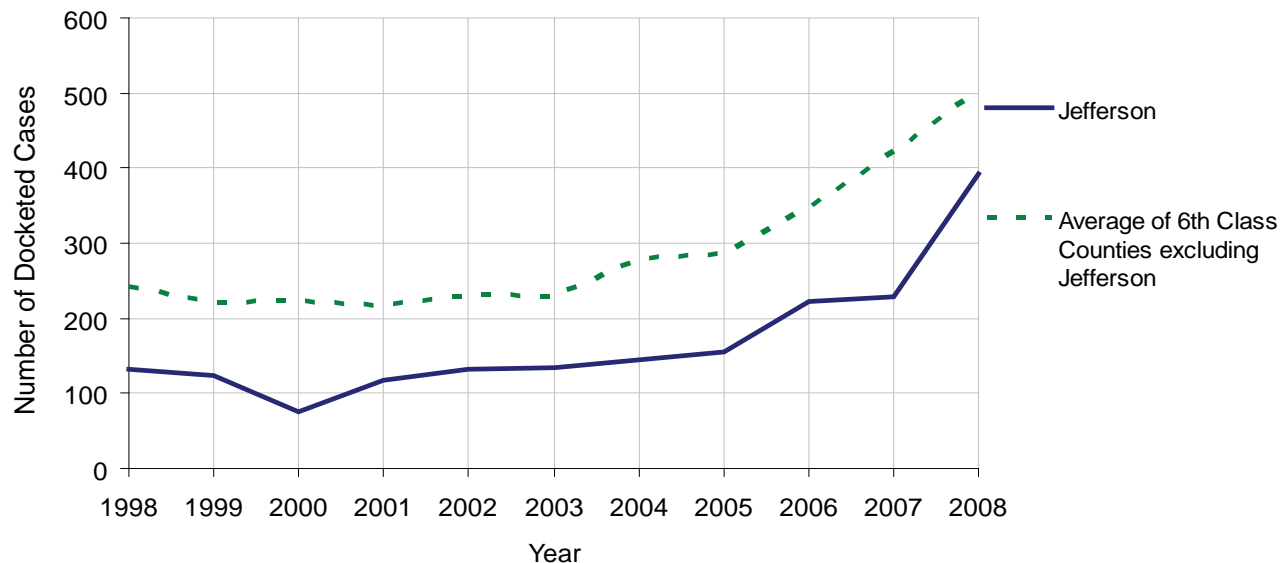
No. of Common Pleas Court Judgeships: 1



2008 Civil		Civil Action		
Docketed Cases		392		
Arbitrated Cases		8		
<b>Trial-Ready Cases:</b>		<b>Civil Action</b>	<b>Other</b>	<b>Total</b>
Cases Pending 1/1/08		5	1	6
Became Trial Ready in '08		15	4	19
Restored to Trial List		1	0	1
Appeals from Arbitration		2	0	2
<b>Cases Available for Trial</b>		<b>23</b>	<b>5</b>	<b>28</b>
<b>Disposed By:</b>				
Settlement		7	2	9
Non-Jury Trial		4	1	5
Jury Trial		2	0	2
Stricken from Trial List		0	1	1
Other		1	0	1
<b>Cases Disposed</b>		<b>14</b>	<b>4</b>	<b>18</b>
<b>Cases Pending 12/31/08</b>		<b>9</b>	<b>1</b>	<b>10</b>

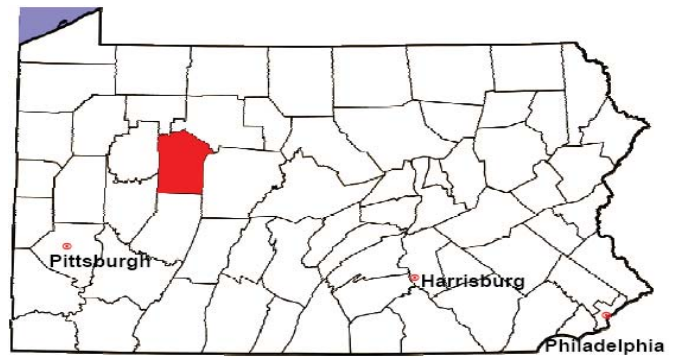
Age of Trial-Ready Cases as of 12/31/08 (Civil Action Only)		
0-6 months	6	67%
7-12 months	3	33%
13-18 months	0	0%
19-24 months	0	0%
25-30 months	0	0%
31-36 months	0	0%
Over 36 months	0	0%
<b>Total</b>	<b>9</b>	<b>100%</b>

Docketed Cases, 1998-2008



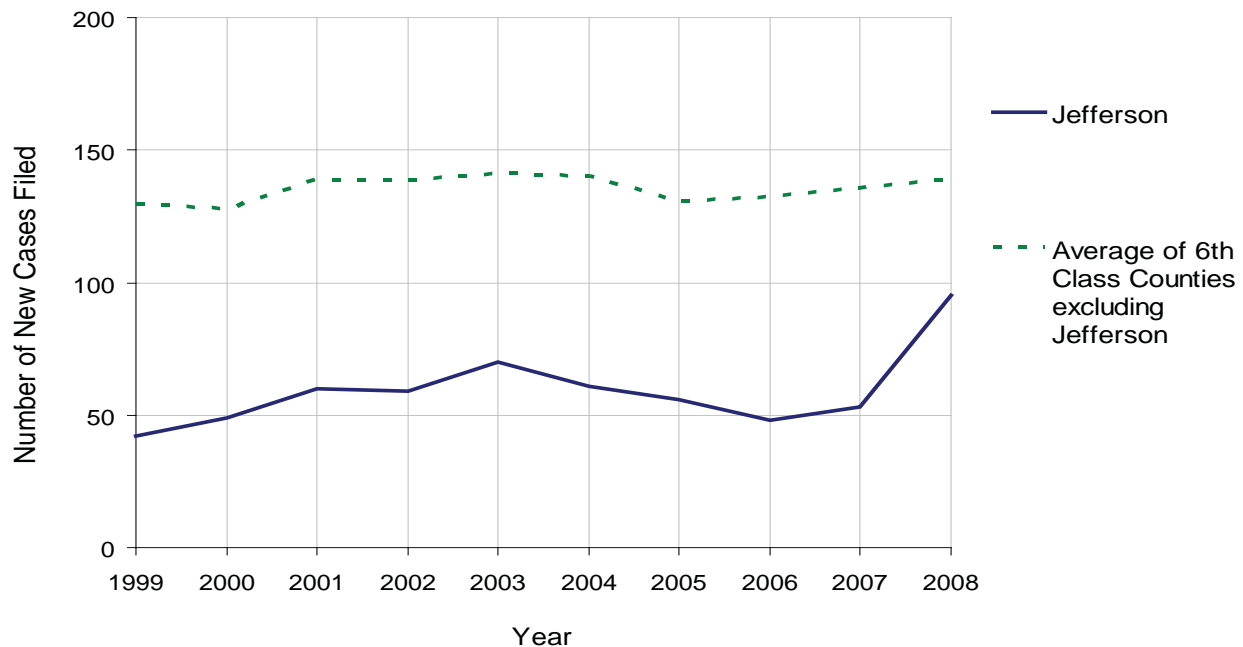
# JEFFERSON COUNTY

2008 Population Estimate: 45,105  
 Class of County: 6th  
 No. of Common Pleas Court Judgeships: 1



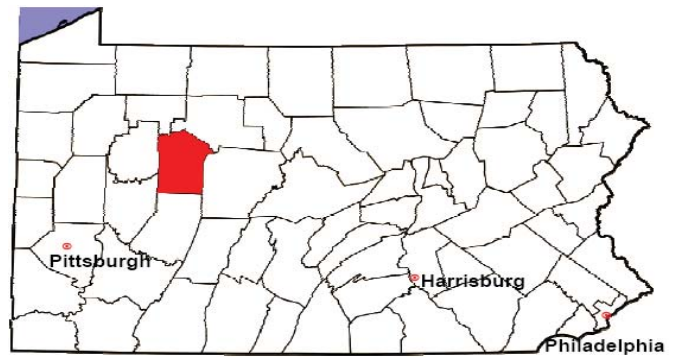
2008 Protection From Abuse	No. of Petitions	%
Cases Pending 1/1/08	6	
New Cases Filed in '08	95	
<b>Cases Available for Processing</b>	<b>101</b>	
Processed By:		
Final Order After Hearing	1	1.1%
Final Order by Stipulation or Agreement	59	65.6%
Dismissal	4	4.4%
Withdrawal	22	24.4%
Other	4	4.4%
<b>Cases Processed</b>	<b>90</b>	<b>100.0%</b>
<b>Cases Pending 12/31/08</b>	<b>11</b>	

PFA New Cases Filed, 1999-2008



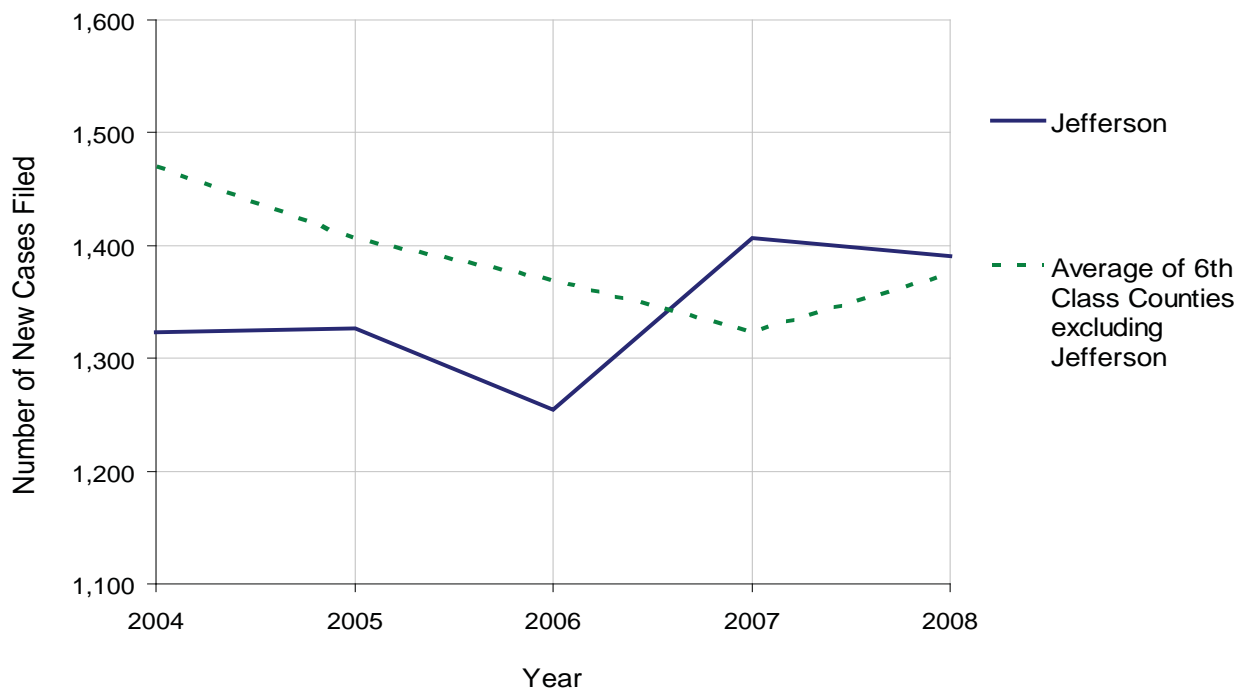
# JEFFERSON COUNTY

2008 Population Estimate: 45,105  
 Class of County: 6th  
 No. of Common Pleas Court Judgeships: 1



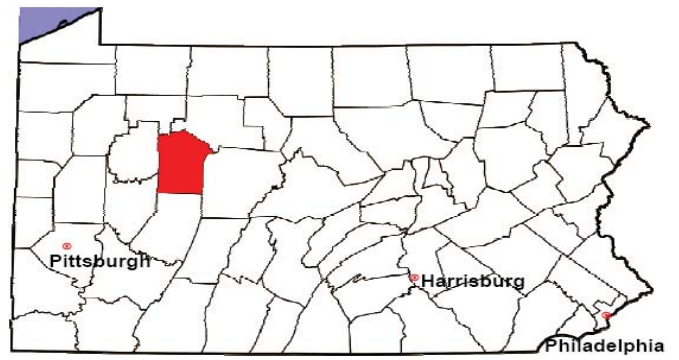
<b>2008 Spousal &amp; Child Support</b>	No. of Petitions	%
Cases Pending 1/1/08	153	
New Cases Filed in '08	1,391	
Dockets Transferred In (+)	8	
Dockets Transferred Out (-)	21	
<b>Cases Available for Processing</b>	<b>1,531</b>	
Processed By:		
Judge	24	1.7%
Intake Officer	1,391	98.3%
Hearing Officer	0	0.0%
Other	0	0.0%
<b>Cases Processed</b>	<b>1,415</b>	<b>100.0%</b>
<b>Cases Pending 12/31/08</b>	<b>116</b>	

Spousal & Child Support New Cases Filed, 1998-2008



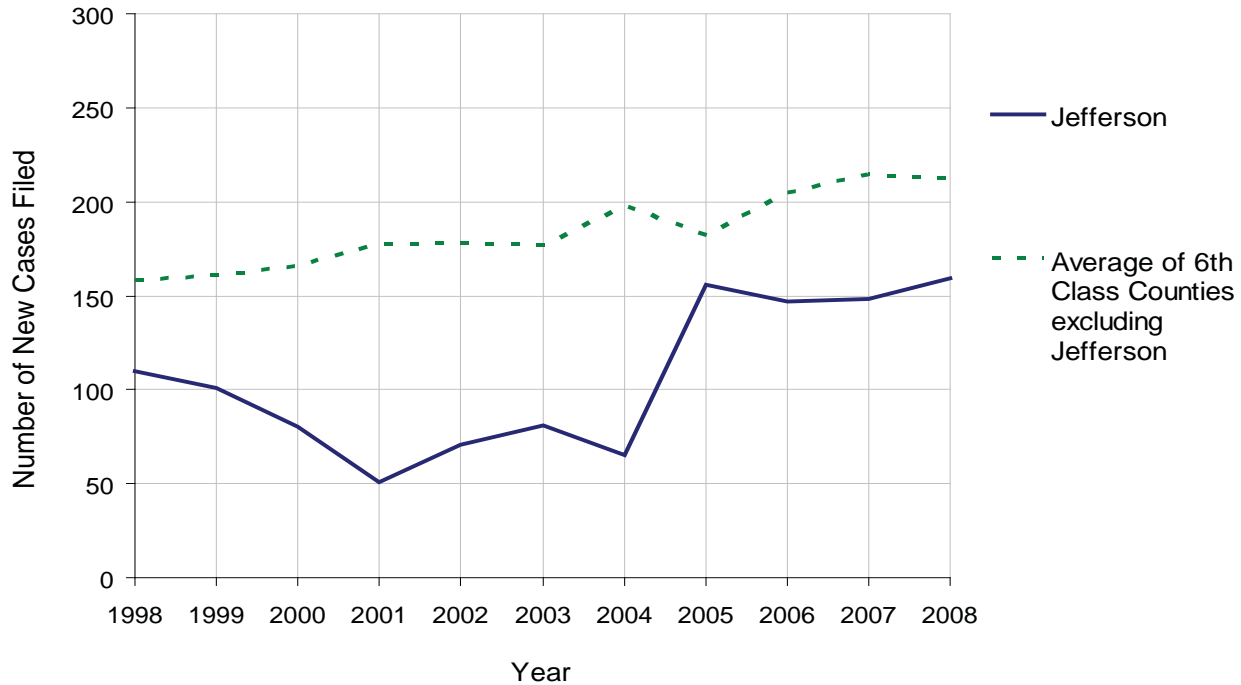
# JEFFERSON COUNTY

2008 Population Estimate: 45,105  
 Class of County: 6th  
 No. of Common Pleas Court Judgeships: 1



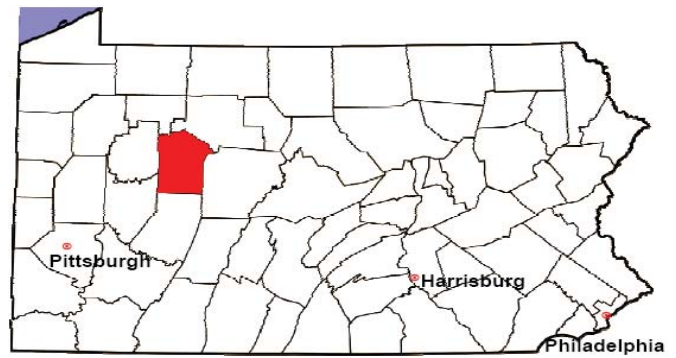
<b>2008 Custody/Partial Custody/Visitation</b>	No. of Petitions	%
Cases Pending 1/1/08	50	
New Cases Filed in '08	159	
<b>Cases Available for Processing</b>	<b>209</b>	
Processed By:		
Judge	7	4.8%
Non-Judicial Officer	39	26.9%
Other	99	68.3%
<b>Cases Processed</b>	<b>145</b>	<b>100.0%</b>
<b>Cases Pending 12/31/08</b>	<b>64</b>	

Custody/Partial Custody/Visitation New Cases Filed  
 1998-2008



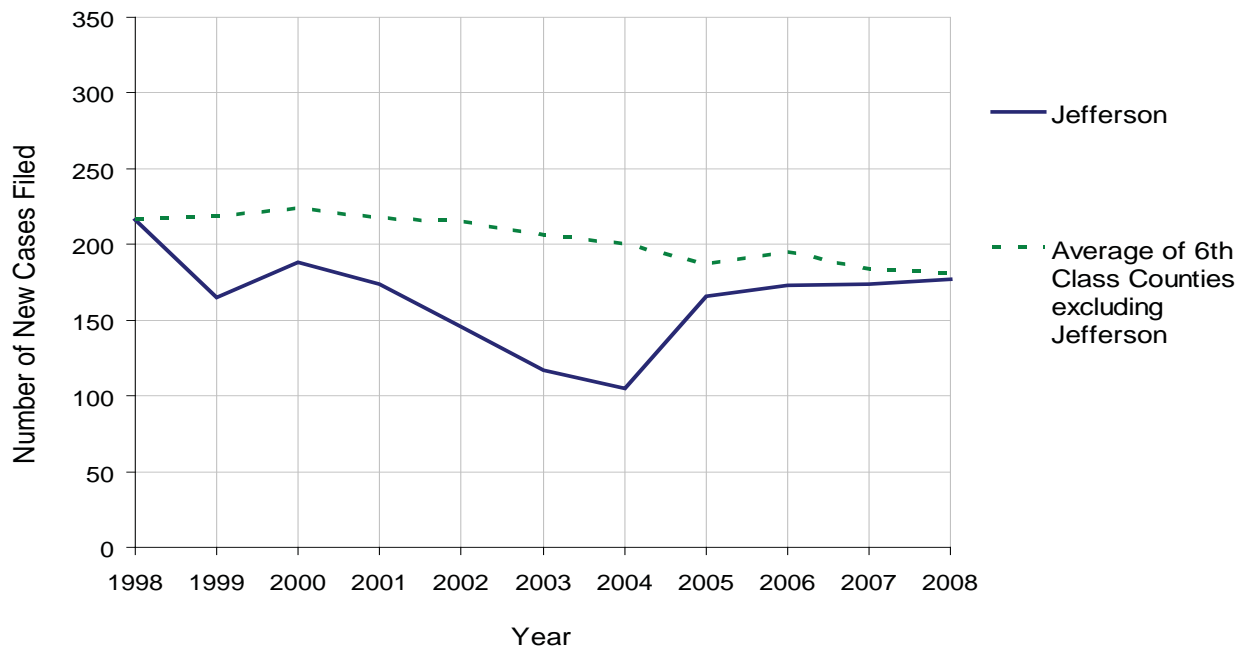
# JEFFERSON COUNTY

2008 Population Estimate: 45,105  
 Class of County: 6th  
 No. of Common Pleas Court Judgeships: 1



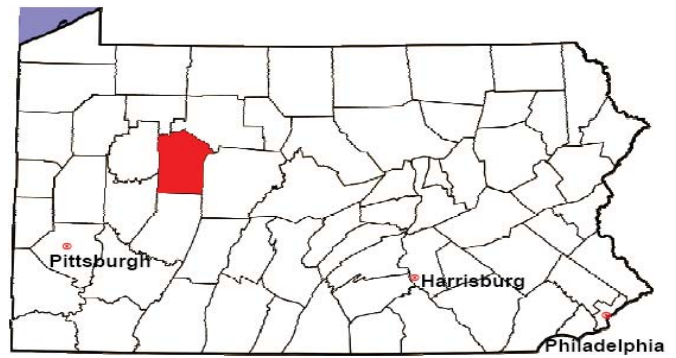
<b>2008 Divorce</b>	No. of Petitions	%
Cases Pending 1/1/08	115	
New Cases Filed in '08	177	
<b>Cases Available for Processing</b>	<b>292</b>	
Processed By:		
Contested Before a Judge	2	1.2%
Contested Before a Master	14	8.4%
Uncontested	139	83.7%
Other	11	6.6%
<b>Cases Processed</b>	<b>166</b>	<b>100.0%</b>
<b>Cases Pending 12/31/08</b>	<b>126</b>	

Divorce New Cases Filed, 1998-2008



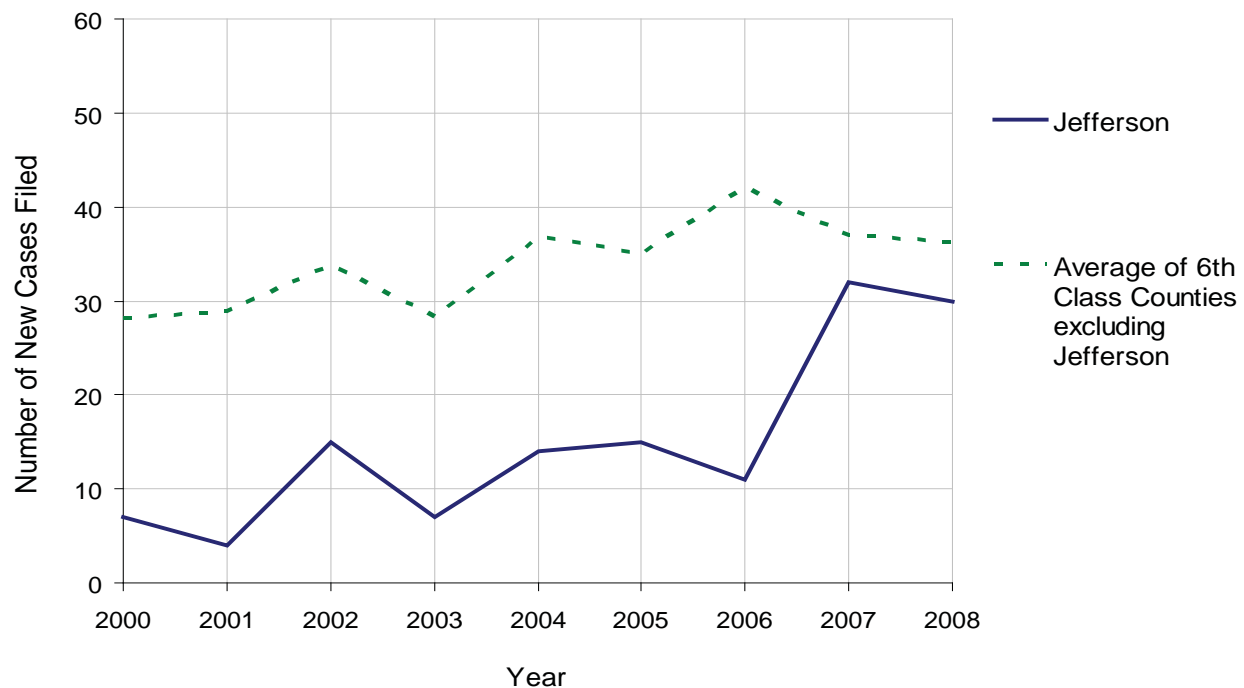
# JEFFERSON COUNTY

2008 Population Estimate: 45,105  
 Class of County: 6th  
 No. of Common Pleas Court Judgeships: 1



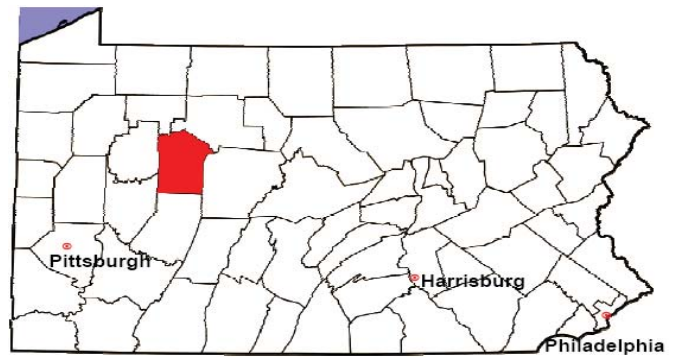
2008 Juvenile Dependency Abuse/Neglect	No. of Petitions	%
Cases Pending 1/1/08	0	
New Cases Filed in '08	30	
<b>Cases Available for Processing</b>	<b>30</b>	
Processed By:		
Judge	30	100.0%
Non-Judicial Officer	0	0.0%
Other	0	0.0%
<b>Cases Processed</b>	<b>30</b>	<b>100.0%</b>
<b>Cases Pending 12/31/08</b>	<b>0</b>	

Abuse/Neglect New Cases Filed, 2000-2008



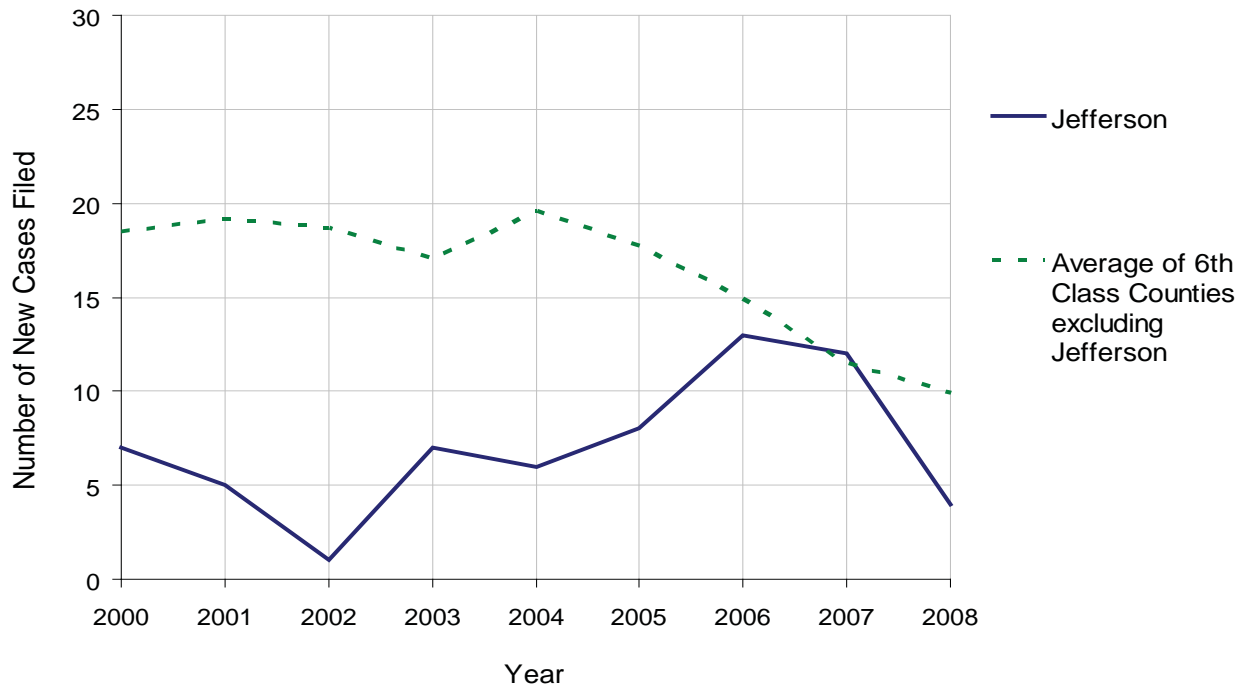
# JEFFERSON COUNTY

2008 Population Estimate: 45,105  
 Class of County: 6th  
 No. of Common Pleas Court Judgeships: 1



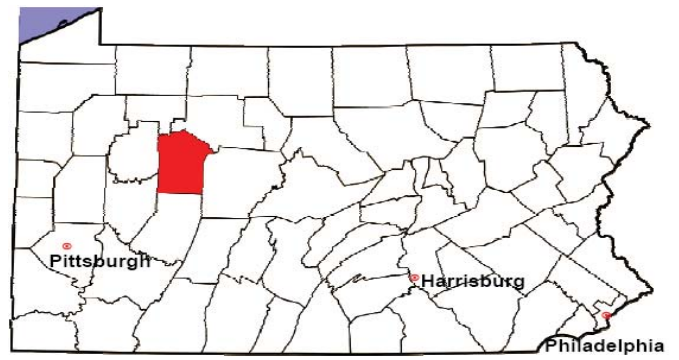
2008 Juvenile Dependency Status Offenses	No. of Petitions	%
Cases Pending 1/1/08	0	
New Cases Filed in '08	4	
<b>Cases Available for Processing</b>	<b>4</b>	
Processed By:		
Judge	4	100.0%
Non-Judicial Officer	0	0.0%
Other	0	0.0%
<b>Cases Processed</b>	<b>4</b>	<b>100.0%</b>
<b>Cases Pending 12/31/08</b>	<b>0</b>	

Status Offenses New Cases Filed, 2000-2008



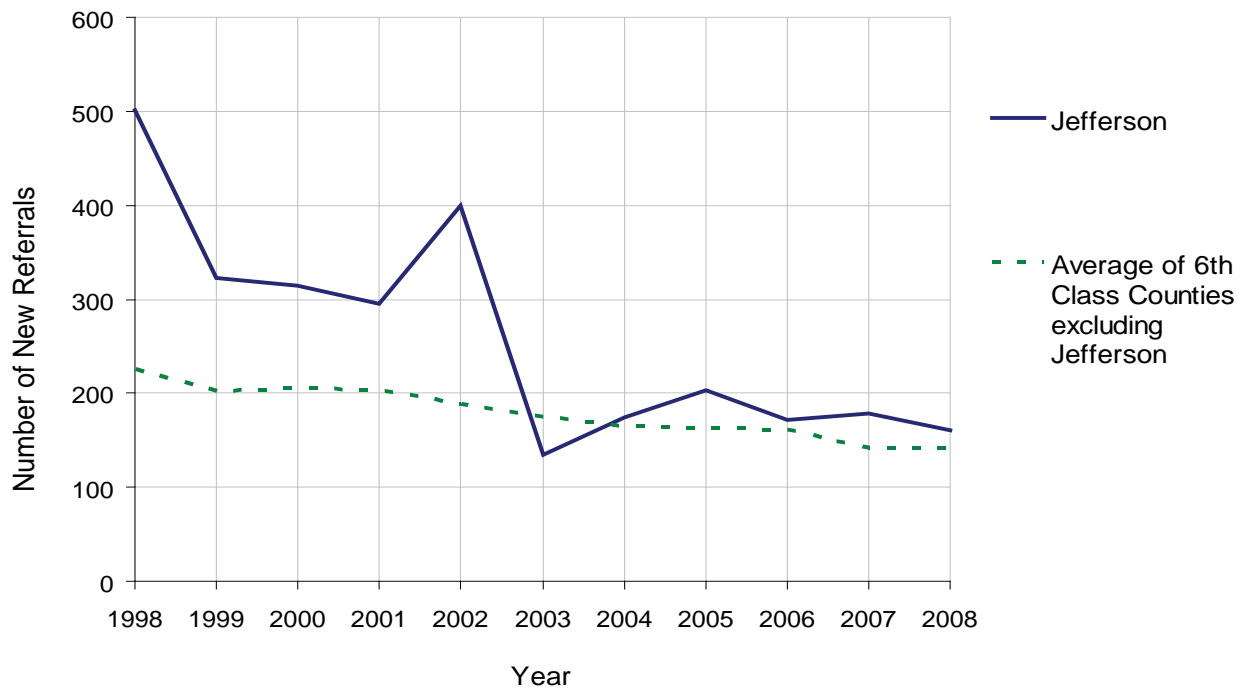
# JEFFERSON COUNTY

2008 Population Estimate: 45,105  
 Class of County: 6th  
 No. of Common Pleas Court Judgeships: 1



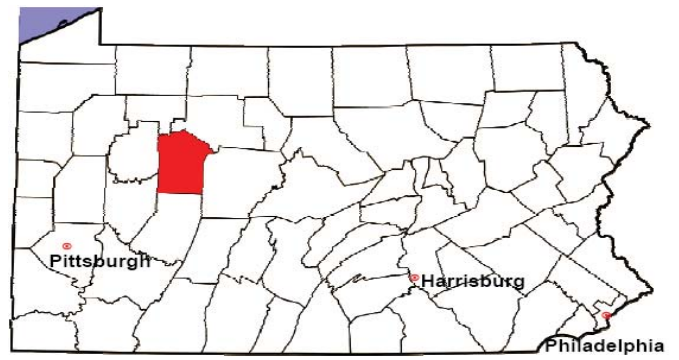
<b>2008 Juvenile Delinquency</b>	No. of Referrals	%
Cases Pending 1/1/08	16	
New Referrals in '08	161	
<b>Cases Available for Processing</b>	<b>177</b>	
Processed By:		
Judge	96	61.5%
Non-Judicial Officer	58	37.2%
Other	2	1.3%
<b>Cases Processed</b>	<b>156</b>	<b>100.0%</b>
<b>Cases Pending 12/31/08</b>	<b>21</b>	

Juvenile Delinquency New Referrals, 1998-2008



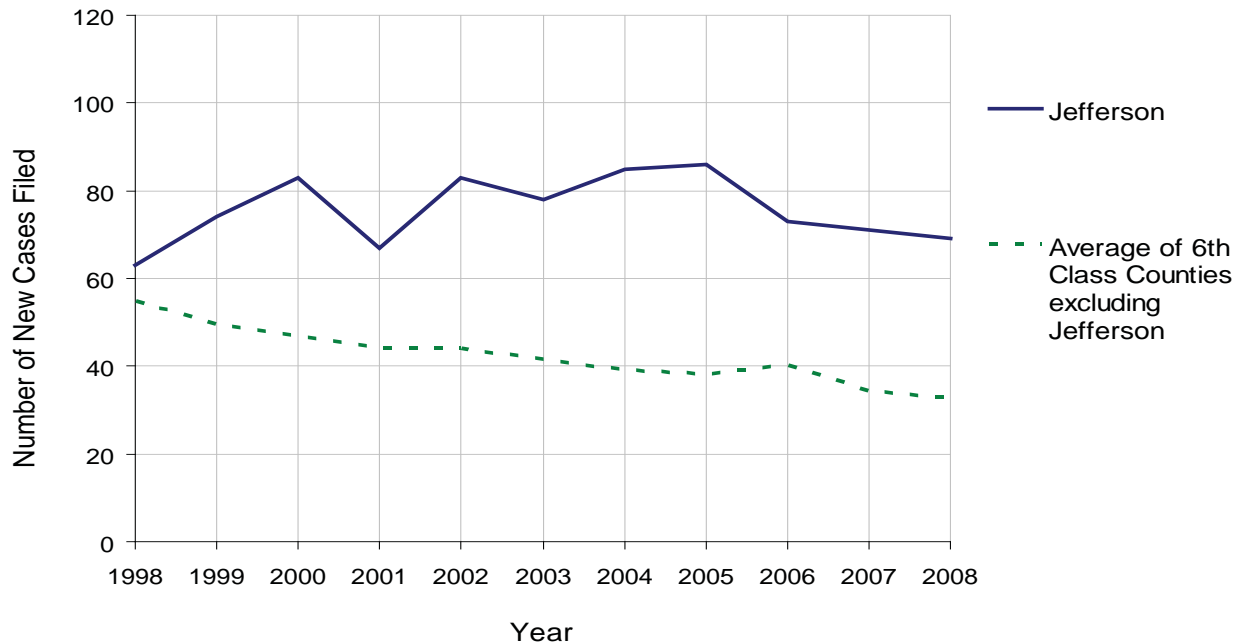
# JEFFERSON COUNTY

2008 Population Estimate: 45,105  
 Class of County: 6th  
 No. of Common Pleas Court Judgeships: 1



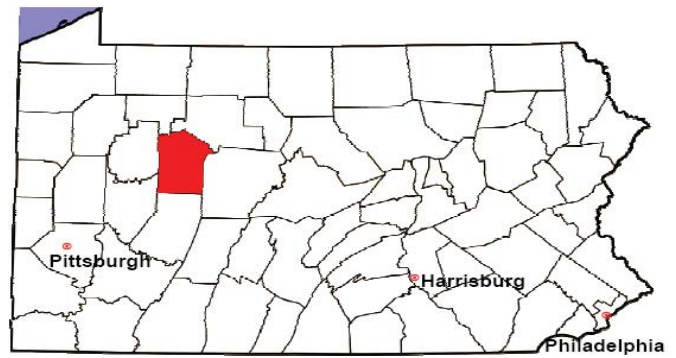
2008 Accounts	No. of Accounts	%
Cases Pending 1/1/08	0	
New Cases Filed in '08	69	
<b>Cases Available for Processing</b>	<b>69</b>	
Processed By:		
Contested before a Judge	0	0.0%
Contested before a Non-Judicial Officer	0	0.0%
Uncontested	69	100.0%
Other	0	0.0%
<b>Cases Processed</b>	<b>69</b>	<b>100.0%</b>
<b>Cases Pending 12/31/08</b>	<b>0</b>	

Accounts New Cases Filed, 1998-2008



# JEFFERSON COUNTY

2008 Population Estimate: 45,105  
 Class of County: 6th  
 No. of Common Pleas Court Judgeships: 1

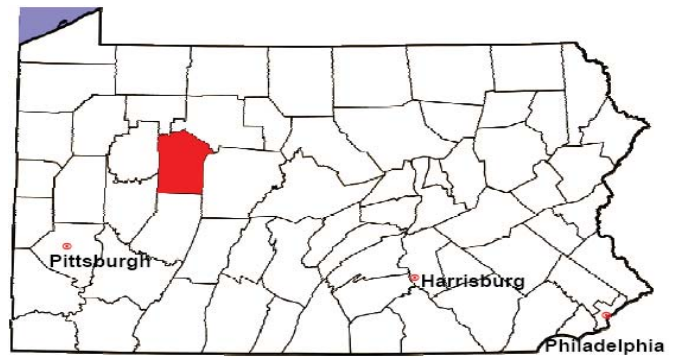


<b>2008 Adoptions</b>		No. of Cases	%
Cases Pending 1/1/08		0	
New Cases Filed in '08		24	
<b>Cases Available for Processing</b>		<b>24</b>	
Processed By:			
Contested before a Judge	Granted	1	5.3%
	Denied	0	0.0%
Uncontested	Granted	18	94.7%
	Denied	0	0.0%
Other		0	0.0%
<b>Cases Processed</b>		<b>19</b>	<b>100.0%</b>
<b>Cases Pending 12/31/08</b>		<b>5</b>	

Note: Prior to 2008, each petition was counted as one new case, regardless of the number of children listed on the petition. Starting in 2008, each child listed on a petition is counted as a separate case. Therefore, statistics for 2008 should not be compared with those for previous years.

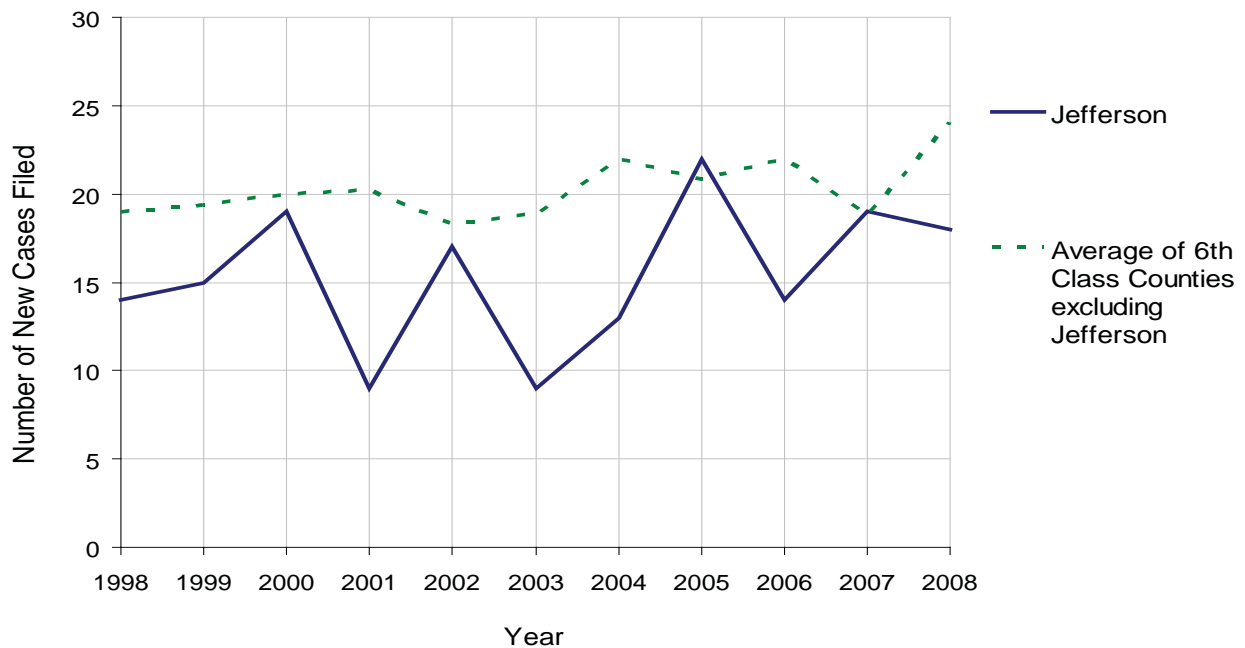
# JEFFERSON COUNTY

2008 Population Estimate: 45,105  
 Class of County: 6th  
 No. of Common Pleas Court Judgeships: 1



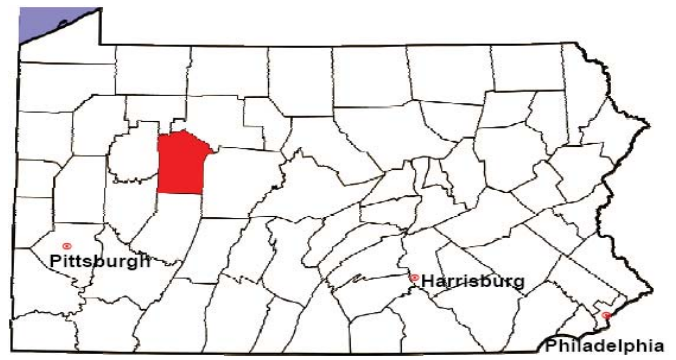
2008 Relinquishments/Terminations	No. of Petitions	%
Cases Pending 1/1/08	3	
New Cases Filed in '08	18	
<b>Cases Available for Processing</b>	<b>21</b>	
Processed By:		
Contested before a Judge	3	16.7%
Uncontested	15	83.3%
Other	0	0.0%
<b>Cases Processed</b>	<b>18</b>	<b>100.0%</b>
<b>Cases Pending 12/31/08</b>	<b>3</b>	

Relinquishments/Terminations New Cases Filed, 1998-2008



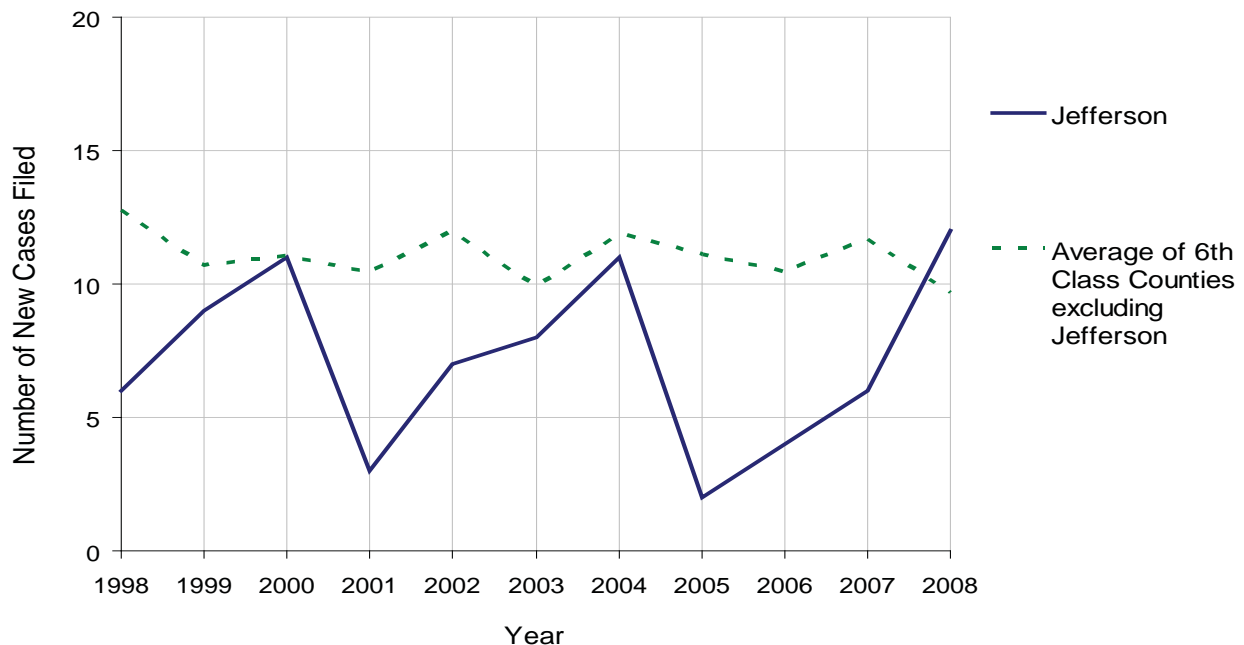
# JEFFERSON COUNTY

2008 Population Estimate: 45,105  
 Class of County: 6th  
 No. of Common Pleas Court Judgeships: 1



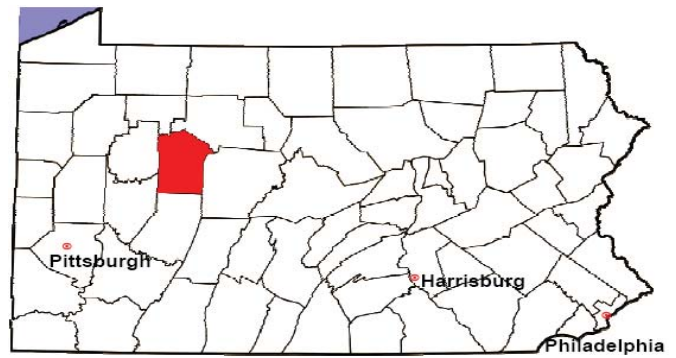
2008 Appointment of Guardians	No. of Petitions	%
Cases Pending 1/1/08	0	
New Cases Filed in '08	12	
<b>Cases Available for Processing</b>	<b>12</b>	
Processed By:		
Contested before a Judge	8	88.9%
Uncontested	1	11.1%
Other	0	0.0%
<b>Cases Processed</b>	<b>9</b>	<b>100.0%</b>
<b>Cases Pending 12/31/08</b>	<b>3</b>	

Appointment of Guardians New Cases Filed, 1998-2008



# JEFFERSON COUNTY

2008 Population Estimate: 45,105  
 Class of County: 6th  
 No. of Common Pleas Court Judgeships: 1



2008 Jury Activity & Performance Measures		
A. Juror Days		842
B. Number Sent to Voir Dire		581
	Voir Dire Attendance Rate $(B/A * 100)$	69.0%
C. Number of Voir Dires Started		12
	Juror Days Per Voir Dire Starts $(A/C)$	70
D. Number of Jurors Selected		102
	Juror Selection Rate $(D/B * 100)$	17.6%
E. Number of Jury Trials Started		8
	Juror Days Per Trial Starts $(A/E)$	105
	Number of Voir Dires Not Resulting in Trial $(C-E)$	4
	Percent Voir Dires Not Resulting in Trial $(C-E)/C * 100$	33.3%
F. Pool Days		12
G. Zero Panel Days		2
	Percent Zero Panel Days $(G/F * 100)$	16.7%
H. Total Juror Fees Incurred		\$20,310
	Average Juror Fees Per Trial $(H/E)$	\$2,539

Average Juror Fees Per Trial, 1998-2008

