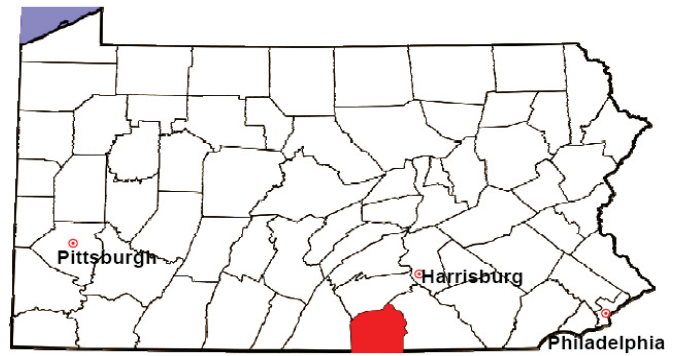


ADAMS COUNTY

2008 Population Estimate: 101,119

Class of County: 6th

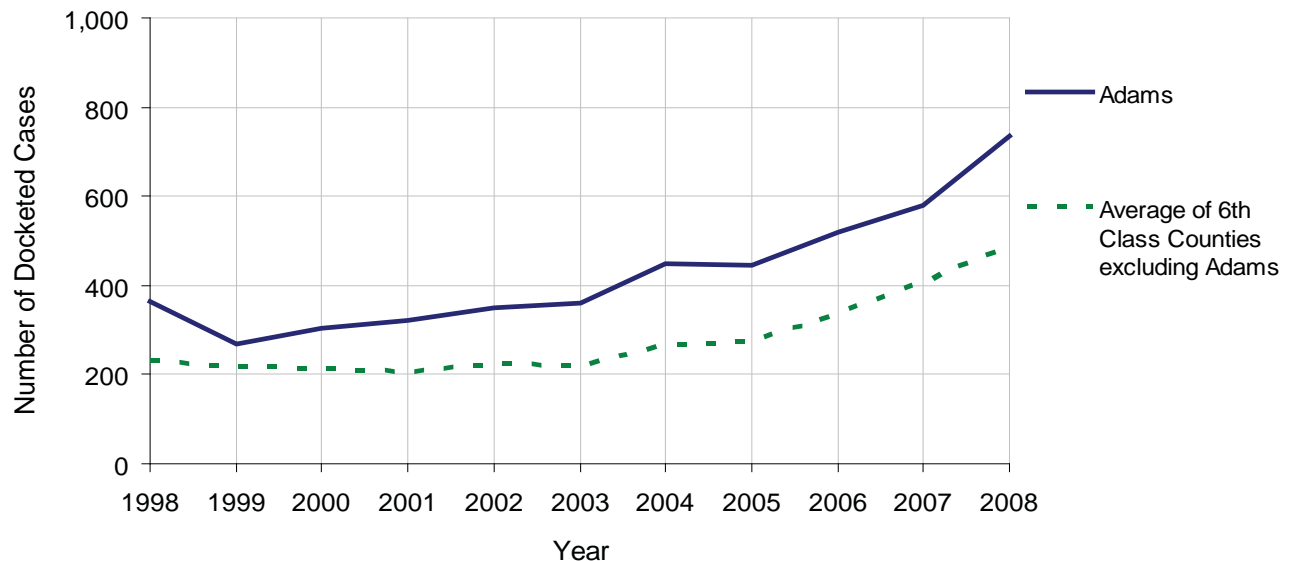
No. of Common Pleas Court Judgeships: 3



2008 Civil		Civil Action		
Docketed Cases		734		
Arbitrated Cases		28		
Trial-Ready Cases:		Civil Action	Other	Total
Cases Pending 1/1/08		16	3	19
Became Trial Ready in '08		41	23	64
Restored to Trial List		1	0	1
Appeals from Arbitration		7	0	7
Cases Available for Trial		65	26	91
Disposed By:				
Settlement		22	6	28
Non-Jury Trial		4	0	4
Jury Trial		3	0	3
Stricken from Trial List		2	0	2
Other		7	1	8
Cases Disposed		38	7	45
Cases Pending 12/31/08		27	19	46

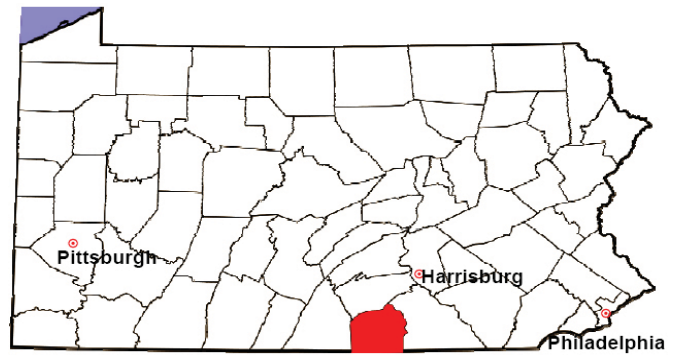
Age of Trial-Ready Cases as of 12/31/08 (Civil Action Only)		
0-6 months	19	70%
7-12 months	8	30%
13-18 months	0	0%
19-24 months	0	0%
25-30 months	0	0%
31-36 months	0	0%
Over 36 months	0	0%
Total	27	100%

Docketed Cases, 1998-2008



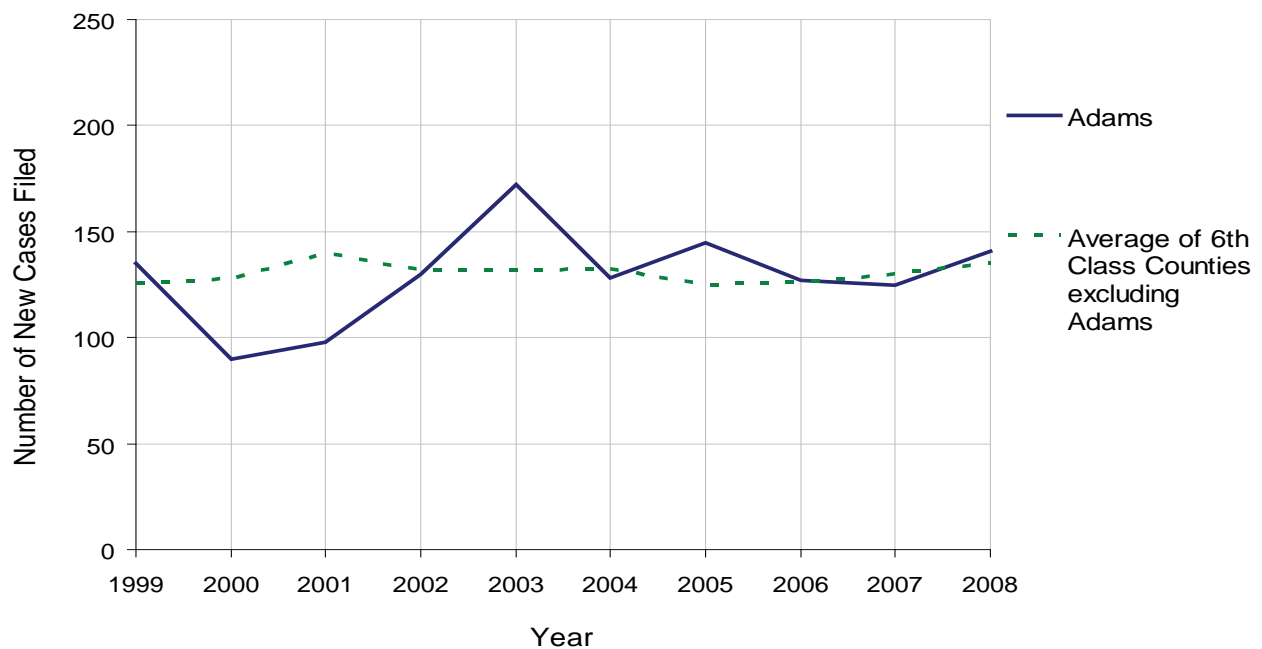
ADAMS COUNTY

2008 Population Estimate: 101,119
 Class of County: 6th
 No. of Common Pleas Court Judgeships: 3



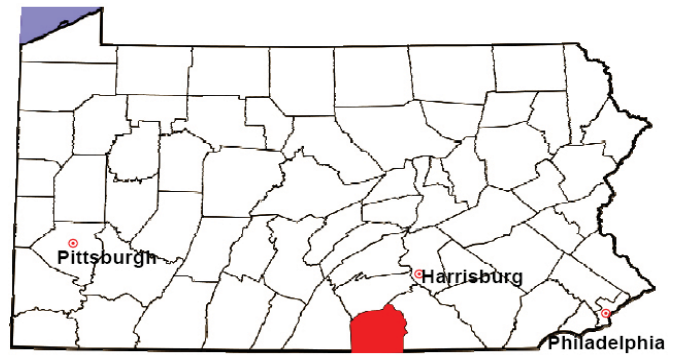
2008 Protection From Abuse	No. of Petitions	%
Cases Pending 1/1/08	11	
New Cases Filed in '08	141	
Cases Available for Processing	152	
Processed By:		
Final Order After Hearing	29	20.9%
Final Order by Stipulation or Agreement	66	47.5%
Dismissal	23	16.5%
Withdrawal	20	14.4%
Other	1	0.7%
Cases Processed	139	100.0%
Cases Pending 12/31/08	13	

PFA New Cases Filed, 1999-2008



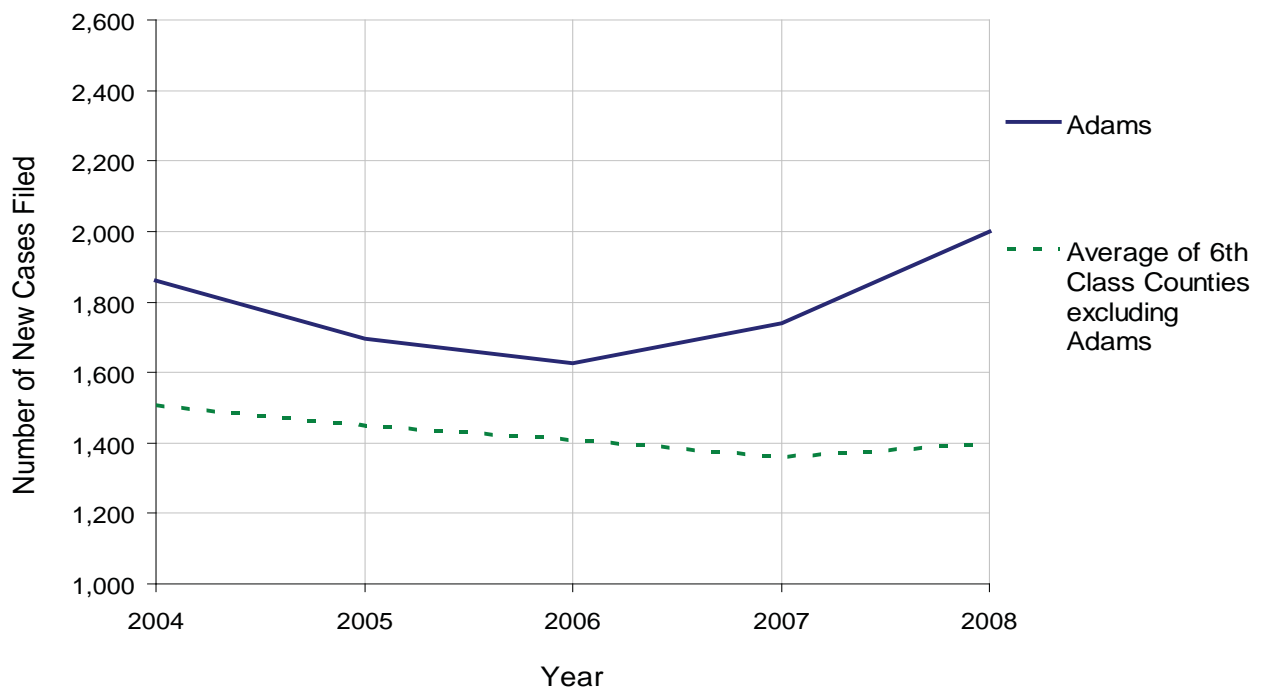
ADAMS COUNTY

2008 Population Estimate: 101,119
 Class of County: 6th
 No. of Common Pleas Court Judgeships: 3



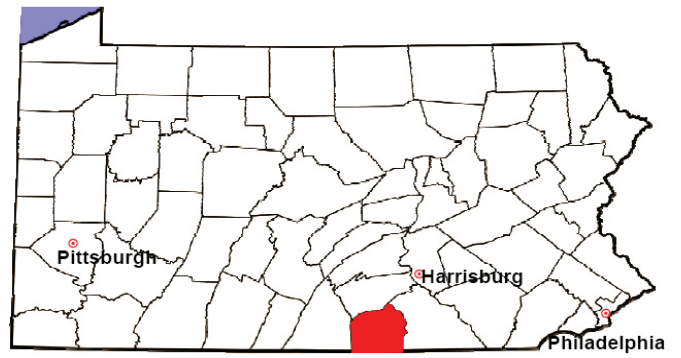
2008 Spousal & Child Support	No. of Petitions	%
Cases Pending 1/1/08	352	
New Cases Filed in '08	2,001	
Dockets Transferred In (+)	13	
Dockets Transferred Out (-)	22	
Cases Available for Processing	2,344	
Processed By:		
Judge	124	6.0%
Intake Officer	1,947	94.0%
Hearing Officer	0	0.0%
Other	1	0.0%
Cases Processed	2,072	100.0%
Cases Pending 12/31/08	272	

Spousal & Child Support New Cases Filed, 2004-2008



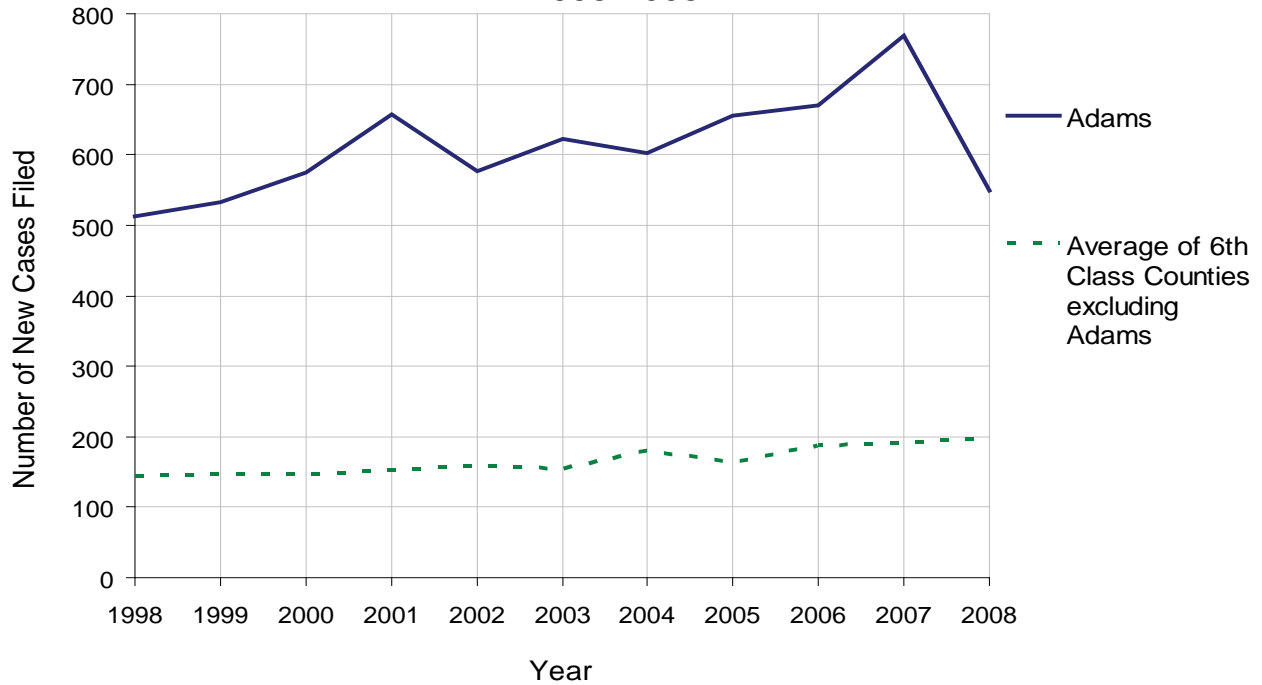
ADAMS COUNTY

2008 Population Estimate: 101,119
 Class of County: 6th
 No. of Common Pleas Court Judgeships: 3



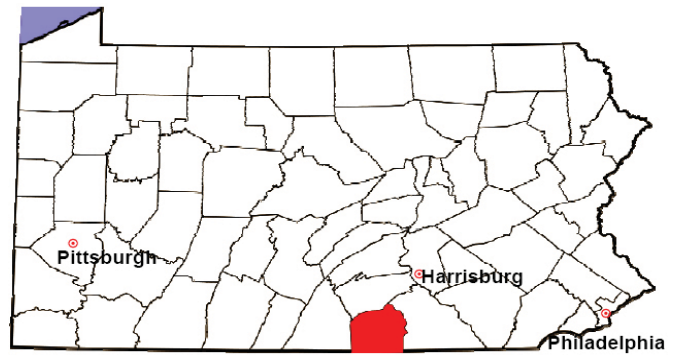
2008 Custody/Partial Custody/Visitation	No. of Petitions	%
Cases Pending 1/1/08	62	
New Cases Filed in '08	550	
Cases Available for Processing	612	
Processed By:		
Judge	410	82.7%
Non-Judicial Officer	0	0.0%
Other	86	17.3%
Cases Processed	496	100.0%
Cases Pending 12/31/08	116	

Custody/Partial Custody/Visitation New Cases Filed
 1998-2008



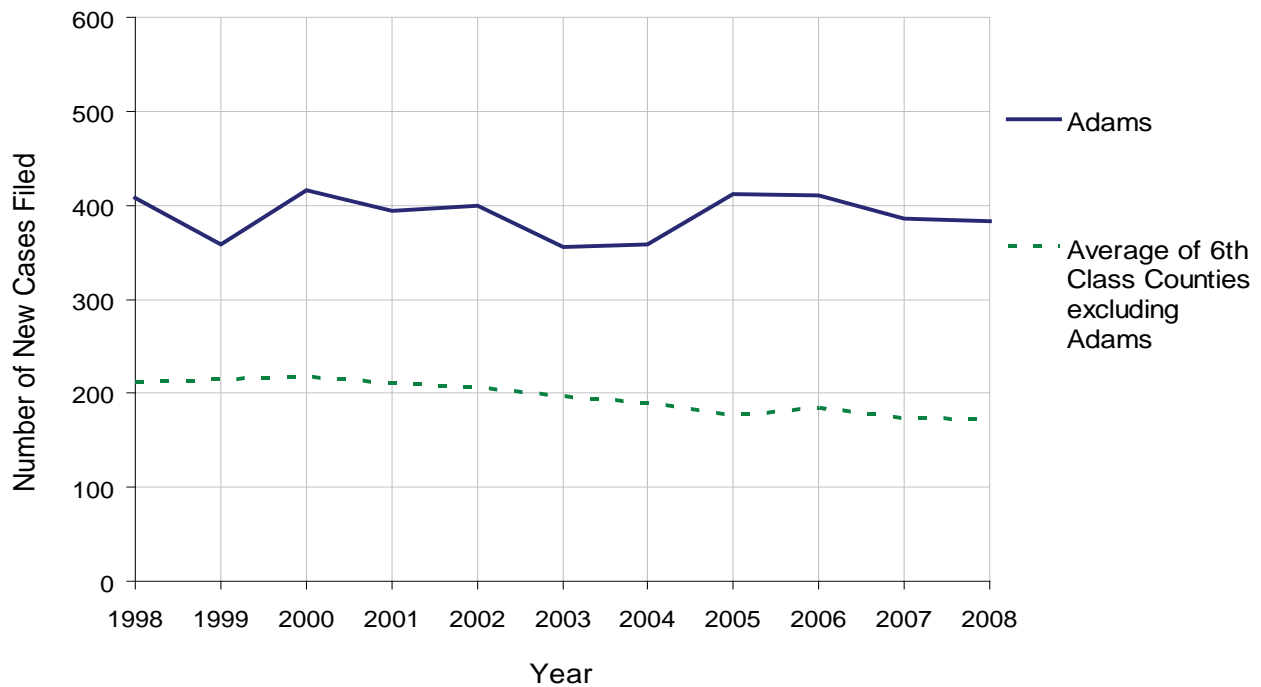
ADAMS COUNTY

2008 Population Estimate: 101,119
 Class of County: 6th
 No. of Common Pleas Court Judgeships: 3



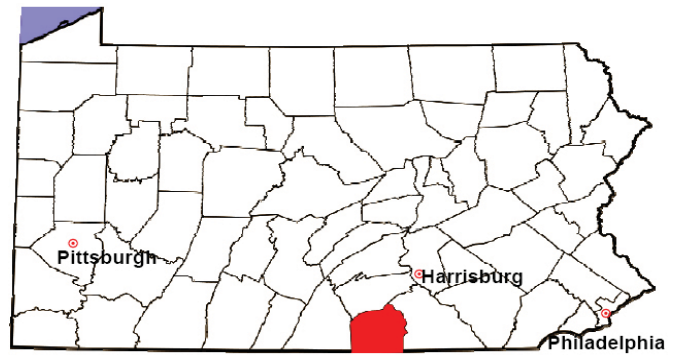
2008 Divorce	No. of Petitions	%
Cases Pending 1/1/08	610	
New Cases Filed in '08	383	
Cases Available for Processing	993	
Processed By:		
Contested Before a Judge	6	1.7%
Contested Before a Master	21	5.9%
Uncontested	318	90.1%
Other	8	2.3%
Cases Processed	353	100.0%
Cases Pending 12/31/08	640	

Divorce New Cases Filed, 1998-2008



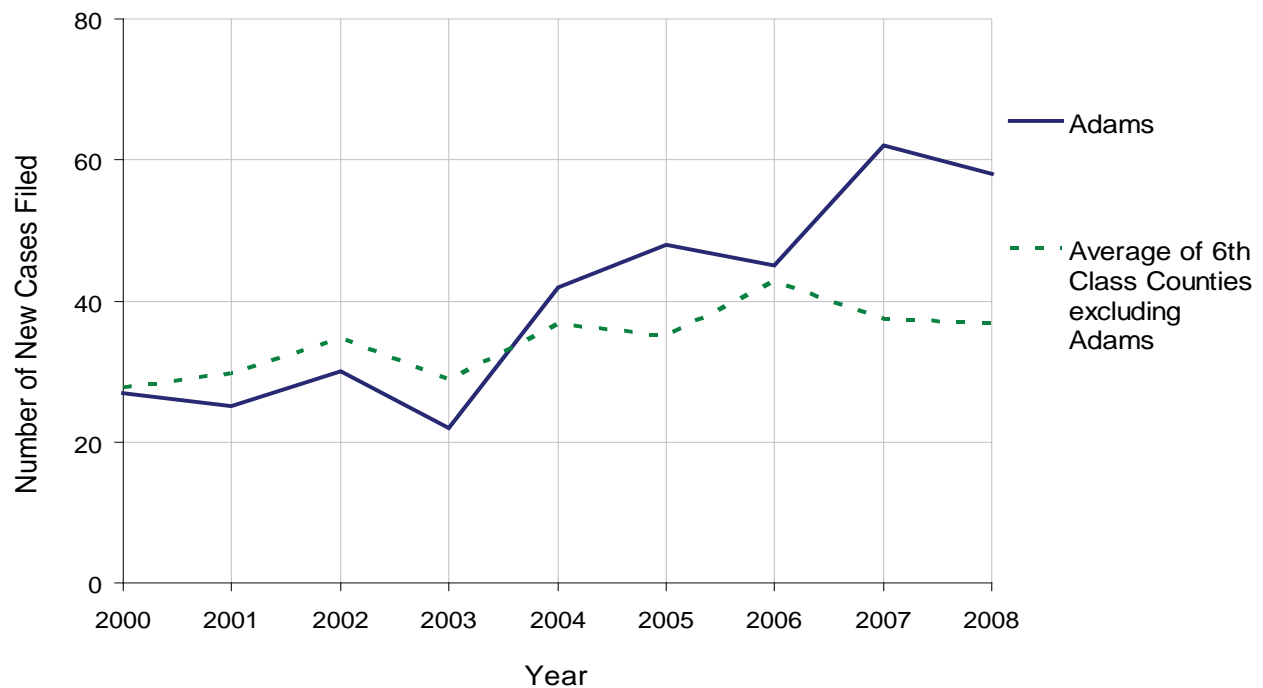
ADAMS COUNTY

2008 Population Estimate: 101,119
 Class of County: 6th
 No. of Common Pleas Court Judgeships: 3



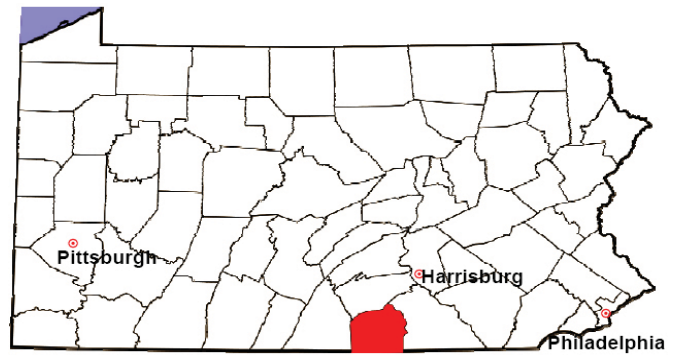
2008 Juvenile Dependency Abuse/Neglect	No. of Petitions	%
Cases Pending 1/1/08	13	
New Cases Filed in '08	58	
Cases Available for Processing	71	
Processed By:		
Judge	41	71.9%
Non-Judicial Officer	10	17.5%
Other	6	10.5%
Cases Processed	57	100.0%
Cases Pending 12/31/08	14	

Abuse/Neglect New Cases Filed, 2000-2008



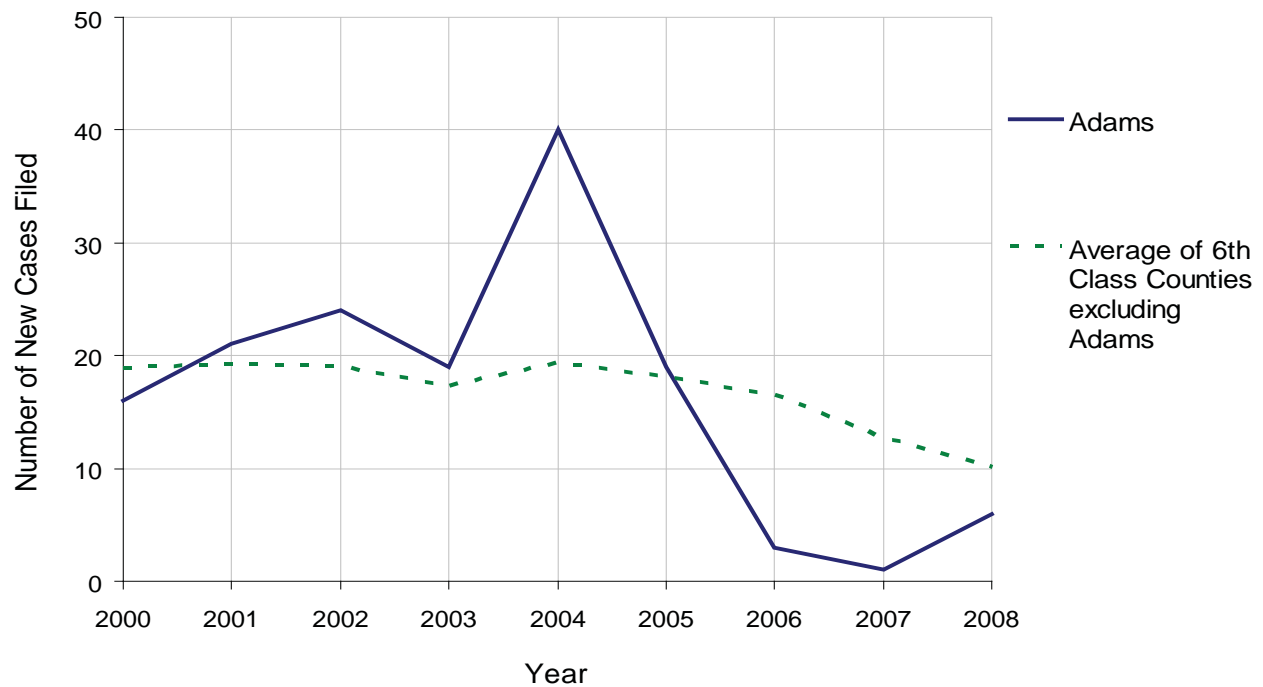
ADAMS COUNTY

2008 Population Estimate: 101,119
 Class of County: 6th
 No. of Common Pleas Court Judgeships: 3



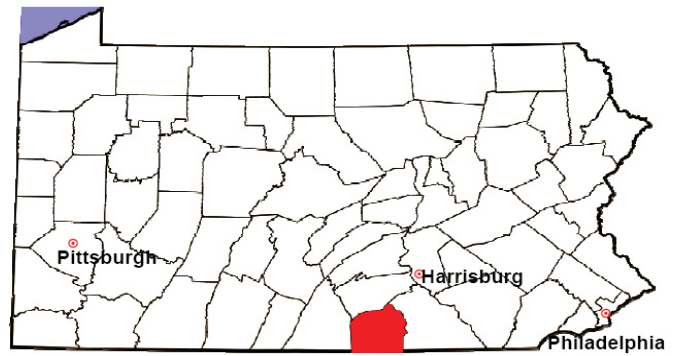
2008 Juvenile Dependency Status Offenses	No. of Petitions	%
Cases Pending 1/1/08	2	
New Cases Filed in '08	6	
Cases Available for Processing	8	
Processed By:		
Judge	4	100.0%
Non-Judicial Officer	0	0.0%
Other	0	0.0%
Cases Processed	4	100.0%
Cases Pending 12/31/08	4	

Status Offenses New Cases Filed, 2000-2008



ADAMS COUNTY

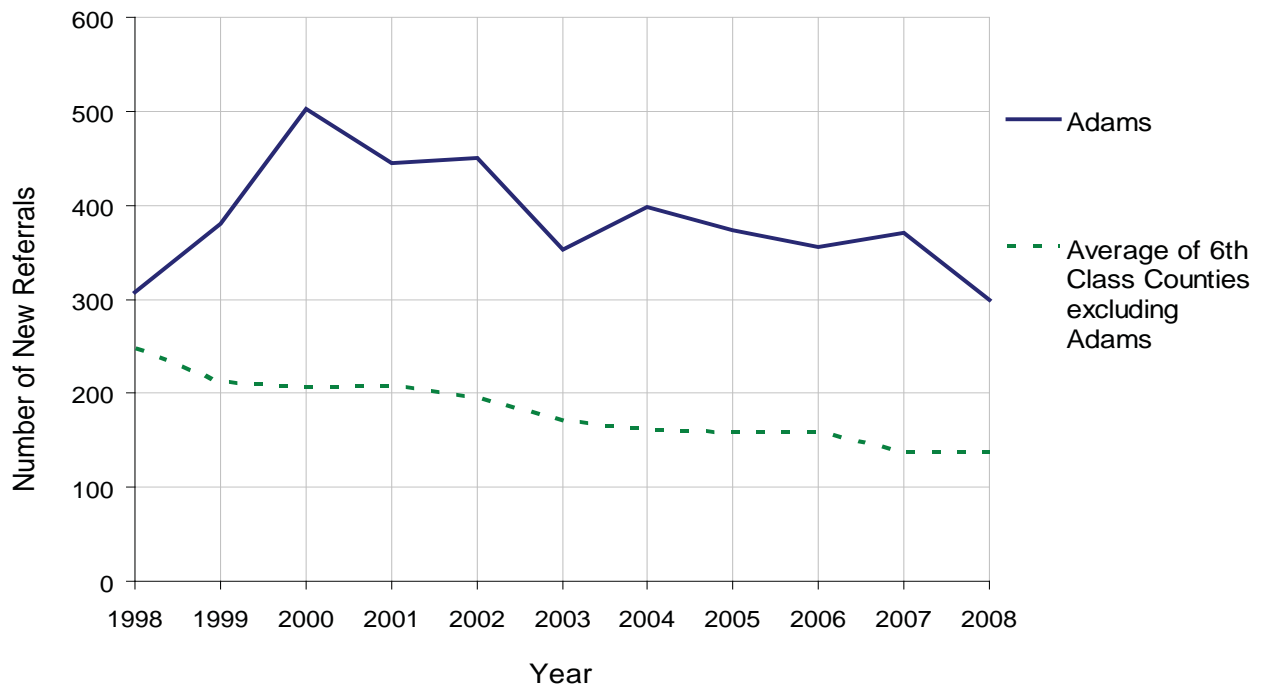
2008 Population Estimate: 101,119
 Class of County: 6th
 No. of Common Pleas Court Judgeships: 3



2008 Juvenile Delinquency	No. of Referrals	%
Cases Pending 1/1/08	160 ^(R)	
New Referrals in '08	299	
Cases Available for Processing	459	
Processed By:		
Judge	93	30.0%
Non-Judicial Officer	153	49.4%
Other	64	20.6%
Cases Processed	310	100.0%
Cases Pending 12/31/08	149	

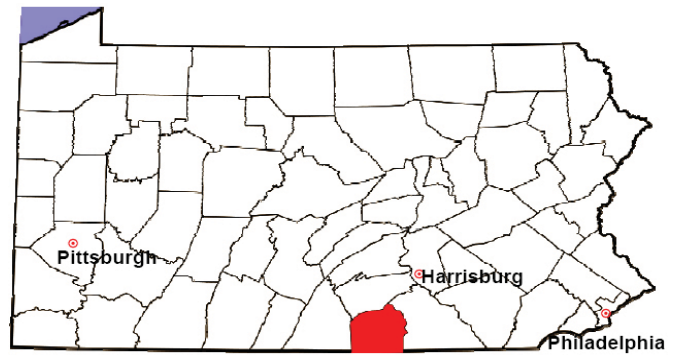
(R) - Revised

Juvenile Delinquency New Referrals, 1998-2008



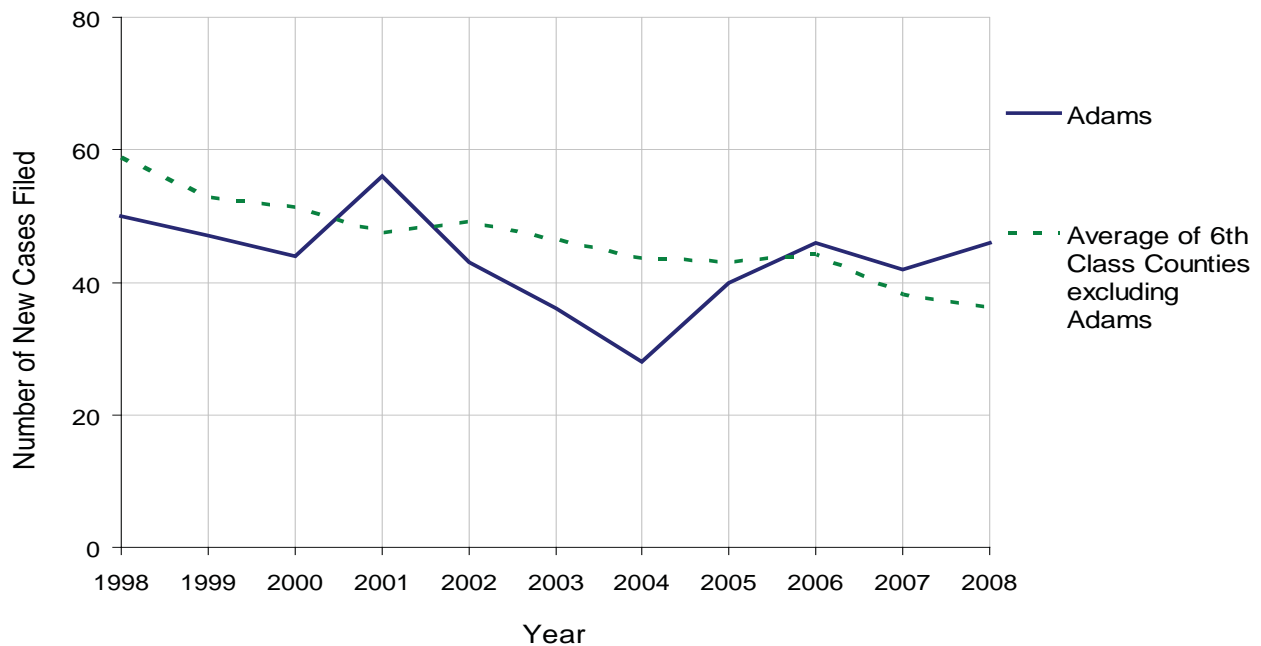
ADAMS COUNTY

2008 Population Estimate: 101,119
 Class of County: 6th
 No. of Common Pleas Court Judgeships: 3



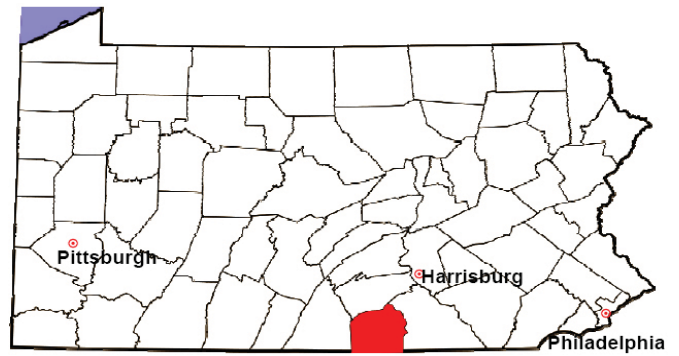
2008 Accounts	No. of Accounts	%
Cases Pending 1/1/08	4	
New Cases Filed in '08	46	
Cases Available for Processing	50	
Processed By:		
Contested before a Judge	0	0.0%
Contested before a Non-Judicial Officer	0	0.0%
Uncontested	49	100.0%
Other	0	0.0%
Cases Processed	49	100.0%
Cases Pending 12/31/08	1	

Accounts New Cases Filed, 1998-2008



ADAMS COUNTY

2008 Population Estimate: 101,119
 Class of County: 6th
 No. of Common Pleas Court Judgeships: 3

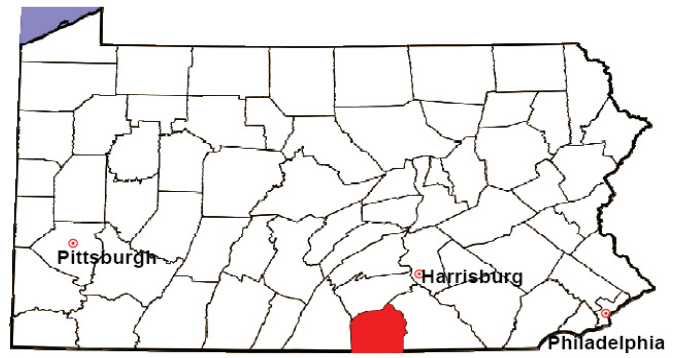


2008 Adoptions		No. of Cases	%
Cases Pending 1/1/08		16	
New Cases Filed in '08		32	
Cases Available for Processing		48	
Processed By:			
Contested before a Judge	Granted	21	60.0%
	Denied	0	0.0%
Uncontested	Granted	14	40.0%
	Denied	0	0.0%
Other		0	0.0%
Cases Processed		35	100.0%
Cases Pending 12/31/08		13	

Note: Prior to 2008, each petition was counted as one new case, regardless of the number of children listed on the petition. Starting in 2008, each child listed on a petition is counted as a separate case. Therefore, statistics for 2008 should not be compared with those for previous years.

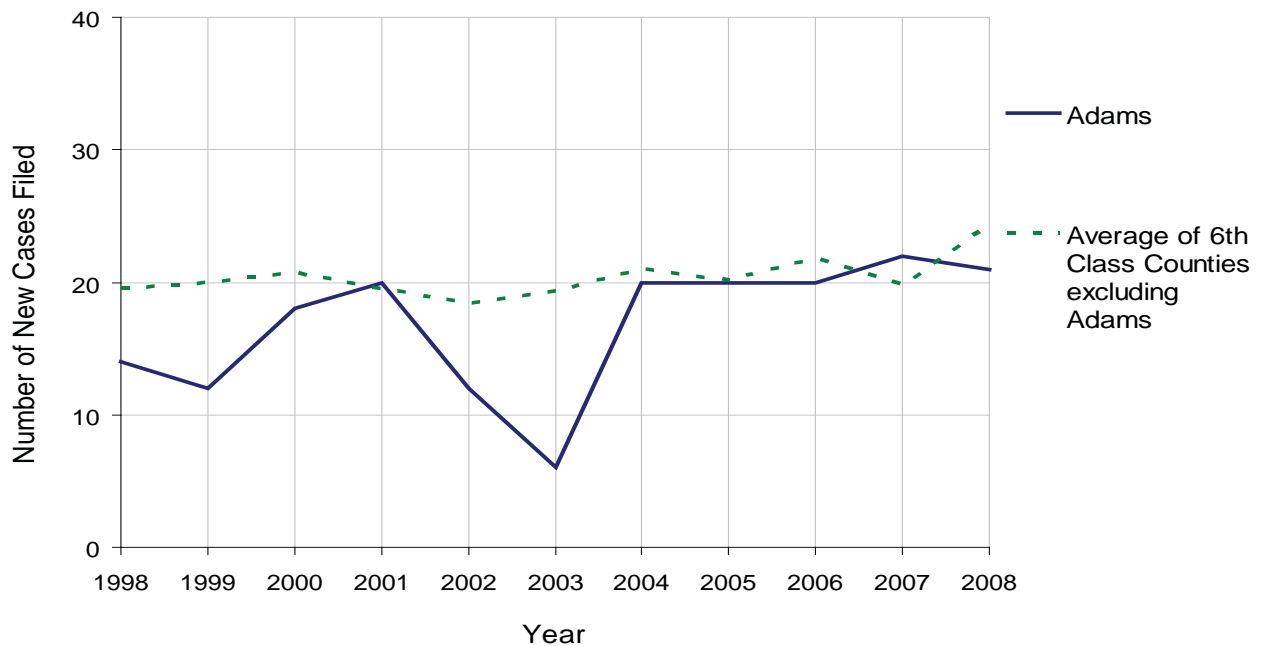
ADAMS COUNTY

2008 Population Estimate: 101,119
 Class of County: 6th
 No. of Common Pleas Court Judgeships: 3



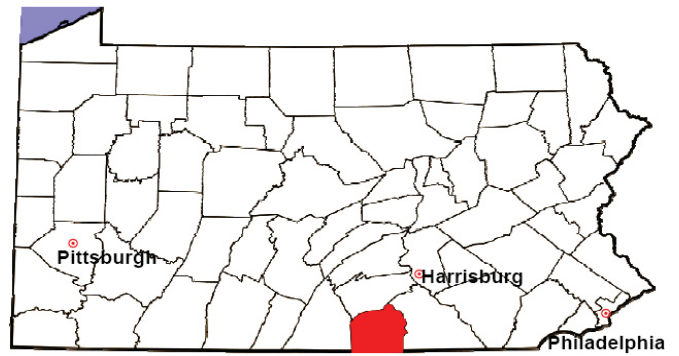
2008 Relinquishments/Terminations	No. of Petitions	%
Cases Pending 1/1/08	5	
New Cases Filed in '08	21	
Cases Available for Processing	26	
Processed By:		
Contested before a Judge	2	9.5%
Uncontested	19	90.5%
Other	0	0.0%
Cases Processed	21	100.0%
Cases Pending 12/31/08	5	

Relinquishments/Terminations New Cases Filed, 1998-2008



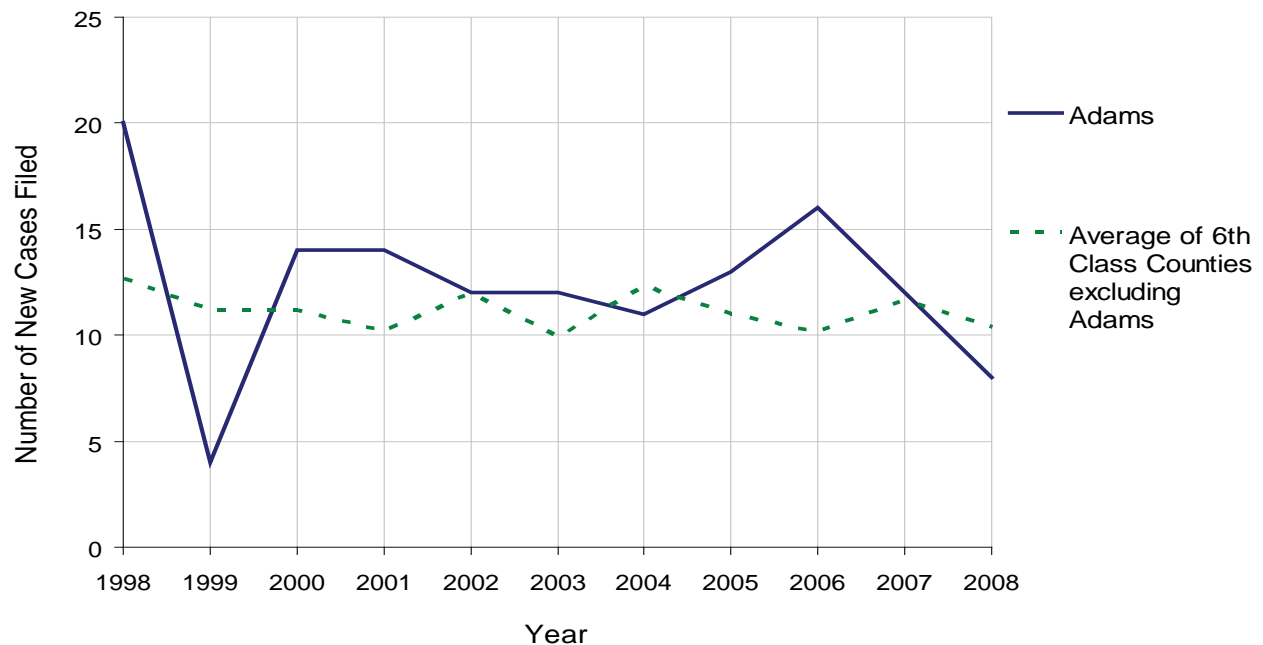
ADAMS COUNTY

2008 Population Estimate: 101,119
 Class of County: 6th
 No. of Common Pleas Court Judgeships: 3



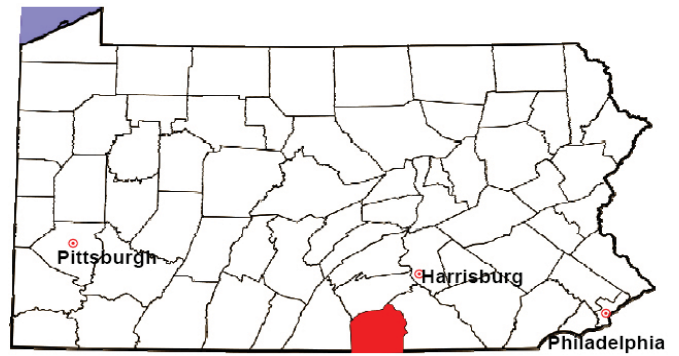
2008 Appointment of Guardians	No. of Petitions	%
Cases Pending 1/1/08	3	
New Cases Filed in '08	8	
Cases Available for Processing	11	
Processed By:		
Contested before a Judge	0	0.0%
Uncontested	8	100.0%
Other	0	0.0%
Cases Processed	8	100.0%
Cases Pending 12/31/08	3	

Appointment of Guardians New Cases Filed, 1998-2008



ADAMS COUNTY

2008 Population Estimate: 101,119
 Class of County: 6th
 No. of Common Pleas Court Judgeships: 3



2008 Jury Activity & Performance Measures		
A. Juror Days		758
B. Number Sent to Voir Dire		974
	Voir Dire Attendance Rate $(B/A * 100)$	128.5%
C. Number of Voir Dires Started		28
	Juror Days Per Voir Dire Starts (A/C)	27
D. Number of Jurors Selected		365
	Juror Selection Rate $(D/B * 100)$	37.5%
E. Number of Jury Trials Started		13
	Juror Days Per Trial Starts (A/E)	58
	Number of Voir Dires Not Resulting in Trial $(C-E)$	15
	Percent Voir Dires Not Resulting in Trial $(C-E)/C * 100$	53.6%
F. Pool Days		7
G. Zero Panel Days		0
	Percent Zero Panel Days $(G/F * 100)$	0.0%
H. Total Juror Fees Incurred		\$15,279
	Average Juror Fees Per Trial (H/E)	\$1,175

Average Juror Fees Per Trial, 1998-2008

