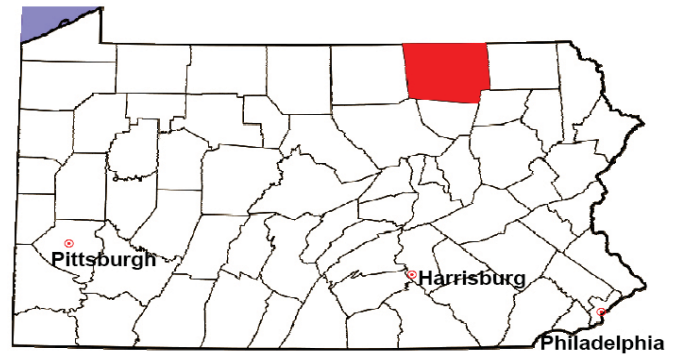


BRADFORD COUNTY

2008 Population Estimate: 61,233

Class of County: 6th

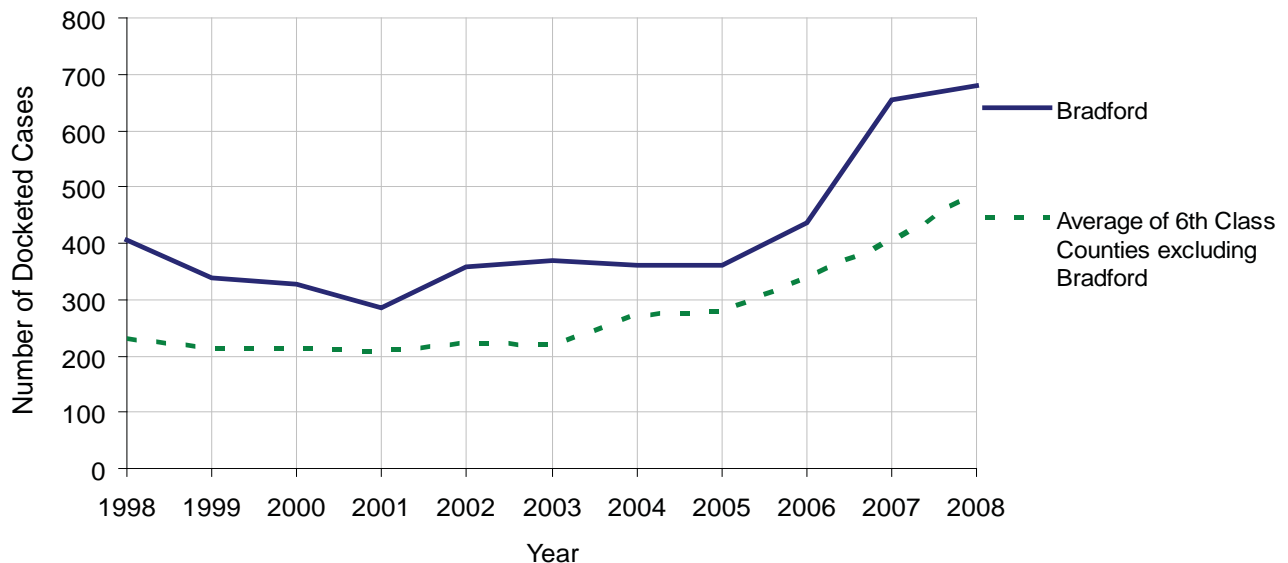
No. of Common Pleas Court Judgeships: 2



2008 Civil		Civil Action		
Docketed Cases		681		
Arbitrated Cases		14		
Trial-Ready Cases:		Civil Action	Other	Total
Cases Pending 1/1/08		17	2	19
Became Trial Ready in '08		25	4	29
Restored to Trial List		1	2	3
Appeals from Arbitration		4	0	4
Cases Available for Trial		47	8	55
Disposed By:				
Settlement		16	0	16
Non-Jury Trial		3	1	4
Jury Trial		1	0	1
Stricken from Trial List		3	0	3
Other		13	2	15
Cases Disposed		36	3	39
Cases Pending 12/31/08		11	5	16

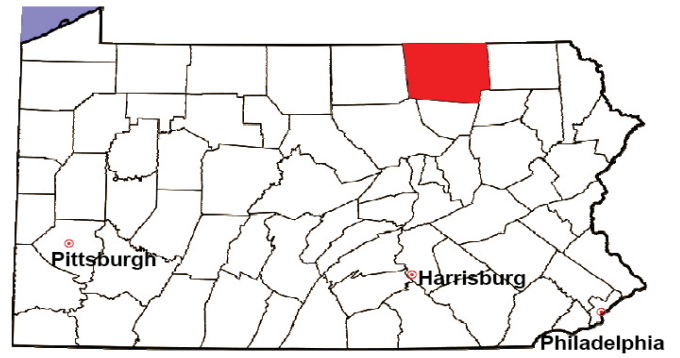
Age of Trial-Ready Cases as of 12/31/08 (Civil Action Only)		
0-6 months	5	45%
7-12 months	6	55%
13-18 months	0	0%
19-24 months	0	0%
25-30 months	0	0%
31-36 months	0	0%
Over 36 months	0	0%
Total	11	100%

Docketed Cases, 1998-2008



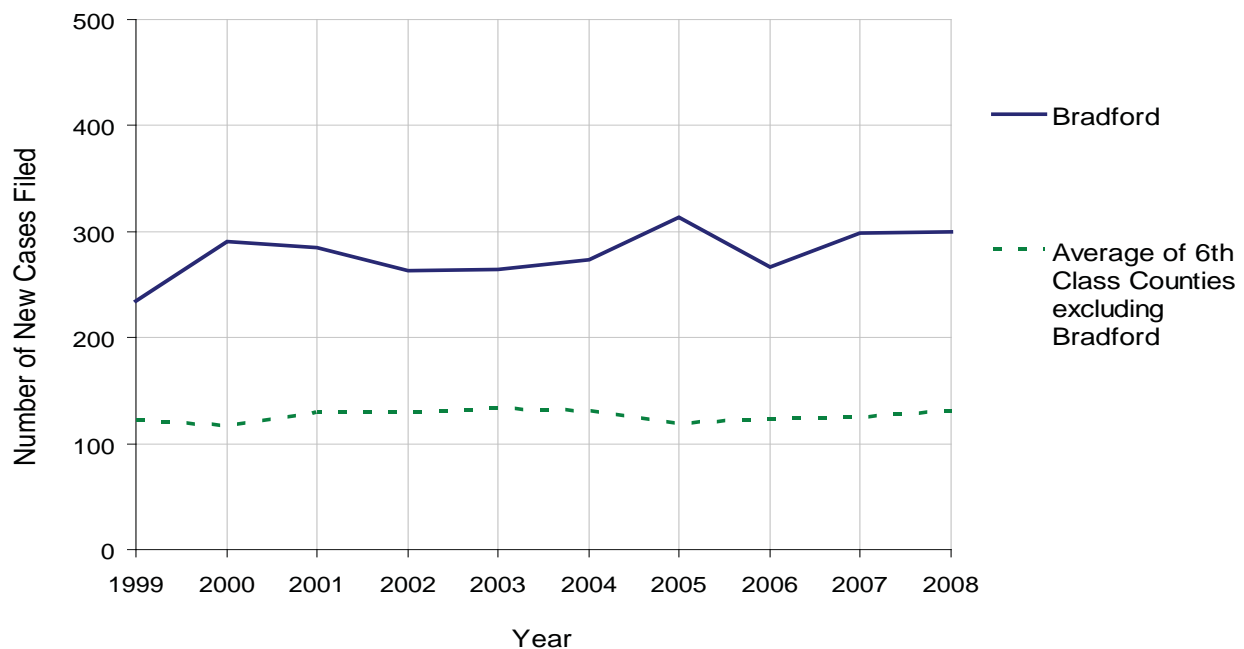
BRADFORD COUNTY

2008 Population Estimate: 61,233
 Class of County: 6th
 No. of Common Pleas Court Judgeships: 2



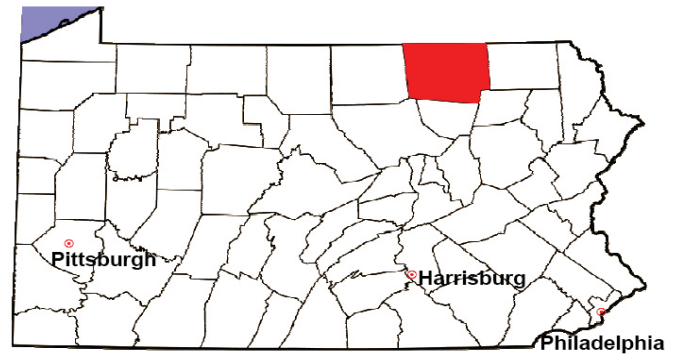
2008 Protection From Abuse	No. of Petitions	%
Cases Pending 1/1/08	20	
New Cases Filed in '08	300	
Cases Available for Processing	320	
Processed By:		
Final Order After Hearing	70	22.9%
Final Order by Stipulation or Agreement	66	21.6%
Dismissal	86	28.1%
Withdrawal	84	27.5%
Other	0	0.0%
Cases Processed	306	100.0%
Cases Pending 12/31/08	14	

PFA New Cases Filed, 1999-2008



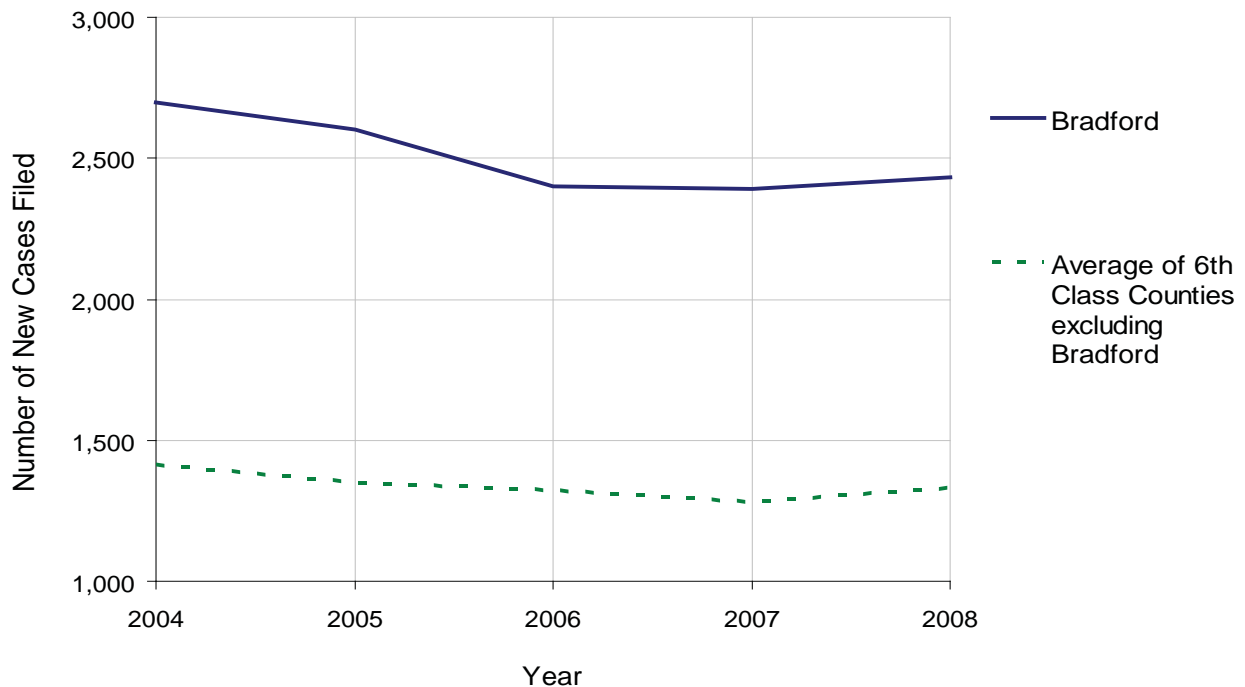
BRADFORD COUNTY

2008 Population Estimate: 61,233
 Class of County: 6th
 No. of Common Pleas Court Judgeships: 2



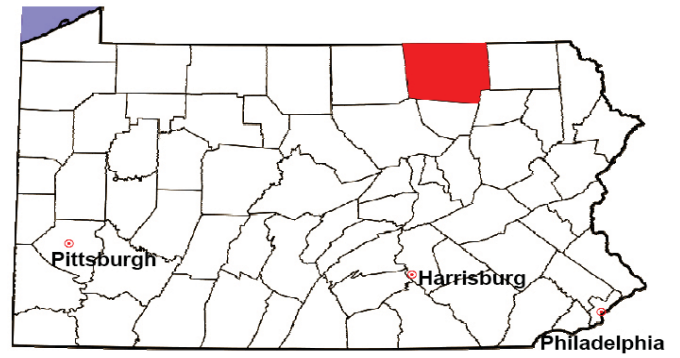
2008 Spousal & Child Support	No. of Petitions	%
Cases Pending 1/1/08	393	
New Cases Filed in '08	2,431	
Dockets Transferred In (+)	11	
Dockets Transferred Out (-)	7	
Cases Available for Processing	2,828	
Processed By:		
Judge	119	5.2%
Intake Officer	1,592	69.0%
Hearing Officer	597	25.9%
Other	0	0.0%
Cases Processed	2,308	100.0%
Cases Pending 12/31/08	520	

Spousal & Child Support New Cases Filed, 1998-2008



BRADFORD COUNTY

2008 Population Estimate: 61,233
 Class of County: 6th
 No. of Common Pleas Court Judgeships: 2



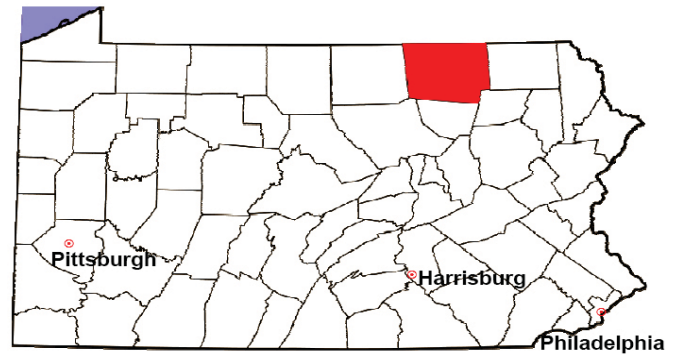
2008 Custody/Partial Custody/Visitation	No. of Petitions	%
Cases Pending 1/1/08	160	
New Cases Filed in '08	295	
Cases Available for Processing	455	
Processed By:		
Judge	47	16.9%
Non-Judicial Officer	45	16.2%
Other	186	66.9%
Cases Processed	278	100.0%
Cases Pending 12/31/08	177	

Custody/Partial Custody/Visitation New Cases Filed
 1998-2008



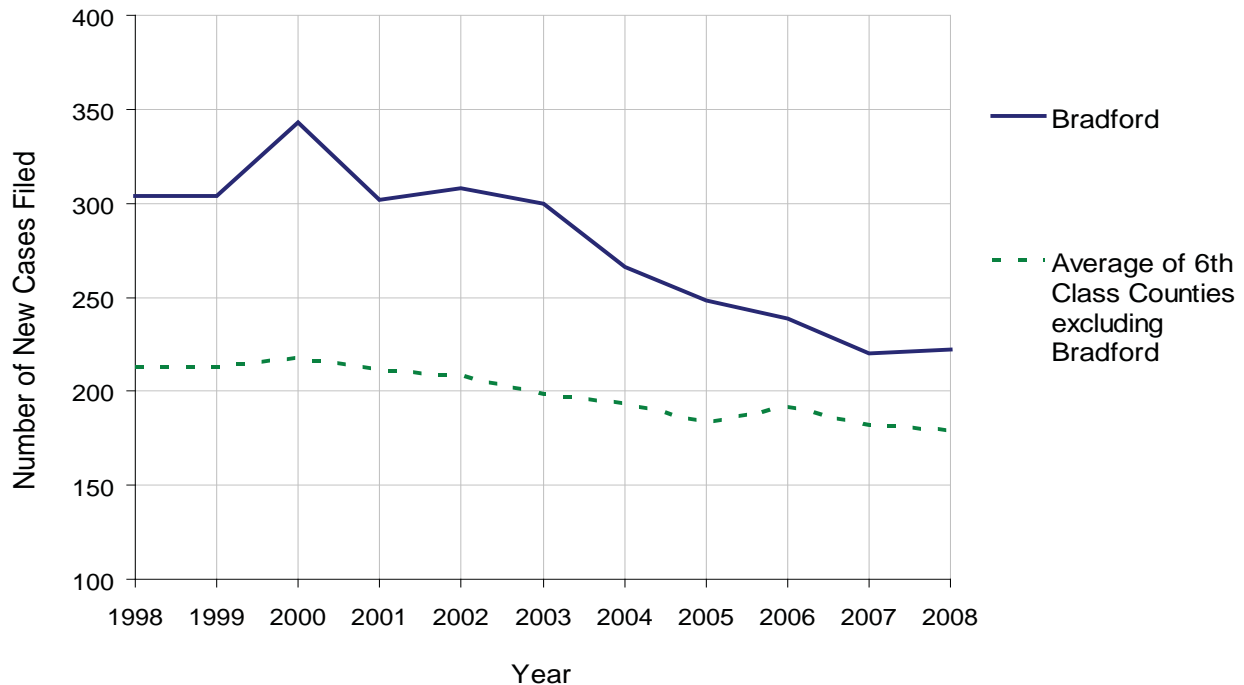
BRADFORD COUNTY

2008 Population Estimate: 61,233
 Class of County: 6th
 No. of Common Pleas Court Judgeships: 2



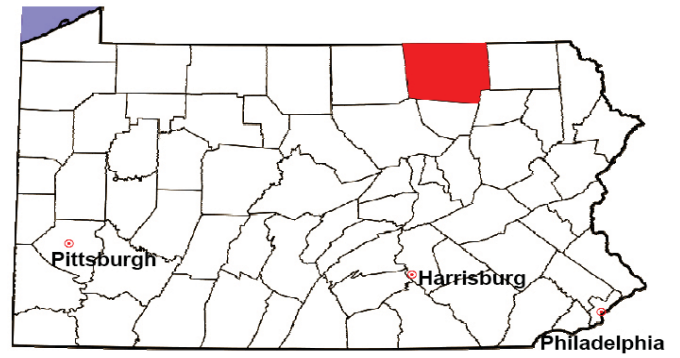
2008 Divorce	No. of Petitions	%
Cases Pending 1/1/08	248	
New Cases Filed in '08	222	
Cases Available for Processing	470	
Processed By:		
Contested Before a Judge	0	0.0%
Contested Before a Master	3	1.4%
Uncontested	192	88.9%
Other	21	9.7%
Cases Processed	216	100.0%
Cases Pending 12/31/08	254	

Divorce New Cases Filed, 1998-2008



BRADFORD COUNTY

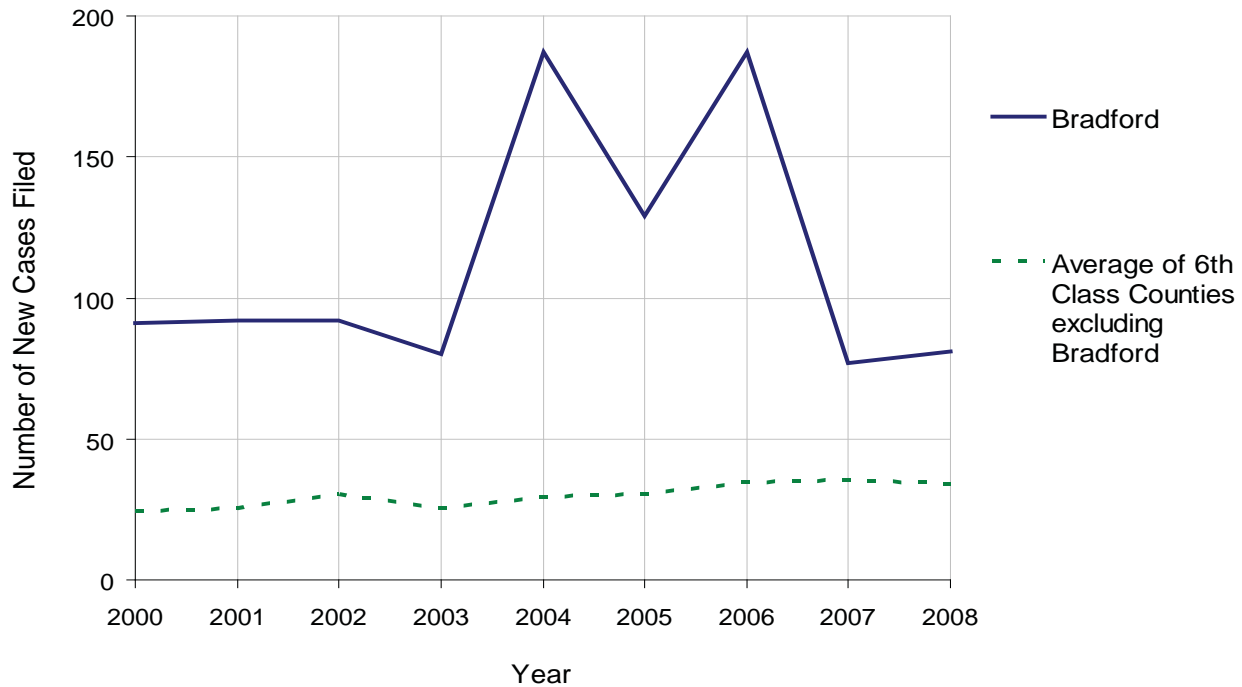
2008 Population Estimate: 61,233
 Class of County: 6th
 No. of Common Pleas Court Judgeships: 2



2008 Juvenile Dependency Abuse/Neglect	No. of Petitions	%
Cases Pending 1/1/08	7	
New Cases Filed in '08	81	
Cases Available for Processing	88	
Processed By:		
Judge	7	11.1%
Non-Judicial Officer	50	79.4%
Other	6	9.5%
Cases Processed	63	100.0%
Cases Pending 12/31/08	25	

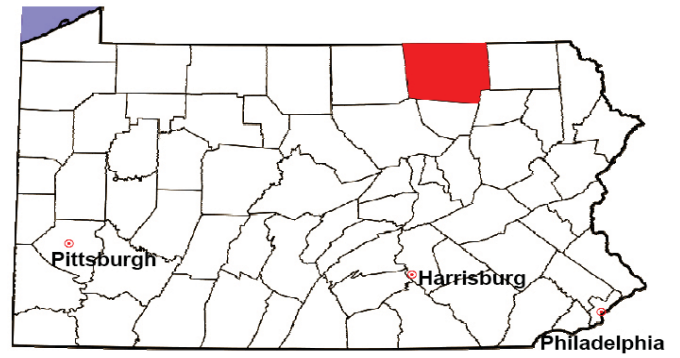
* Dependency Incomplete - missing August through December due to changeover to CPCMS Dependency module.

Abuse/Neglect New Cases Filed, 2000-2008



BRADFORD COUNTY

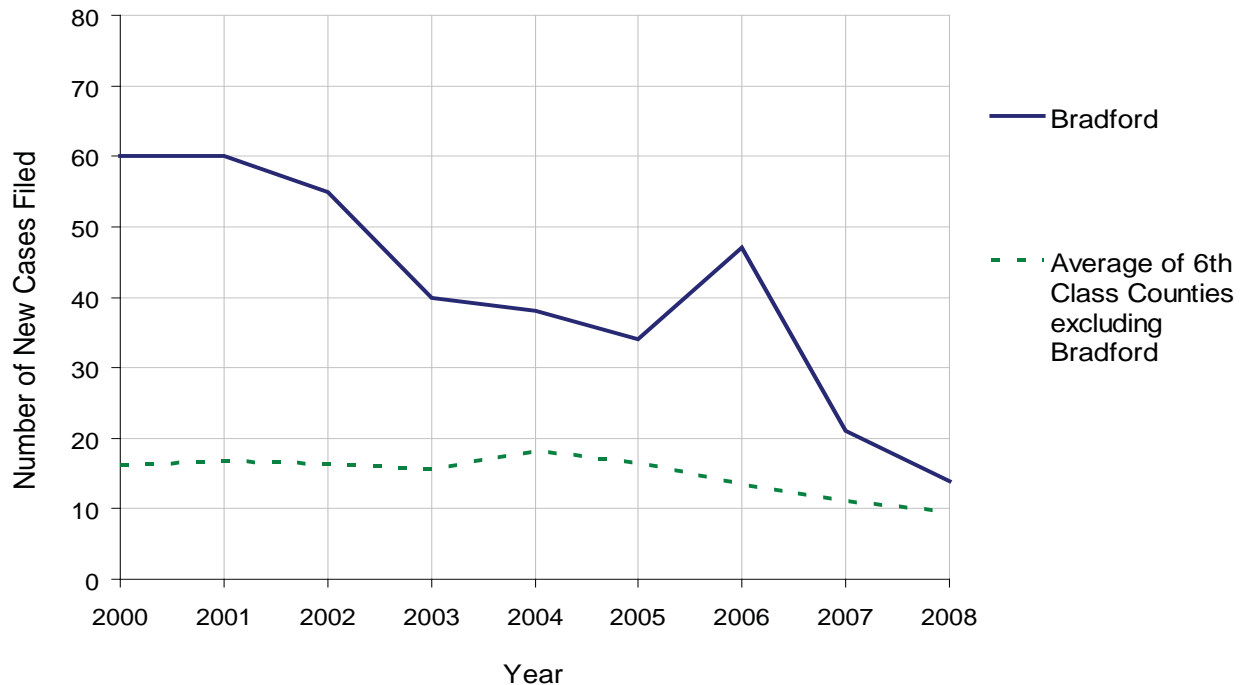
2008 Population Estimate: 61,233
 Class of County: 6th
 No. of Common Pleas Court Judgeships: 2



2008 Juvenile Dependency Status Offenses	No. of Petitions	%
Cases Pending 1/1/08	0	
New Cases Filed in '08	14	
Cases Available for Processing	14	
Processed By:		
Judge	0	0.0%
Non-Judicial Officer	7	100.0%
Other	0	0.0%
Cases Processed	7	100.0%
Cases Pending 12/31/08	7	

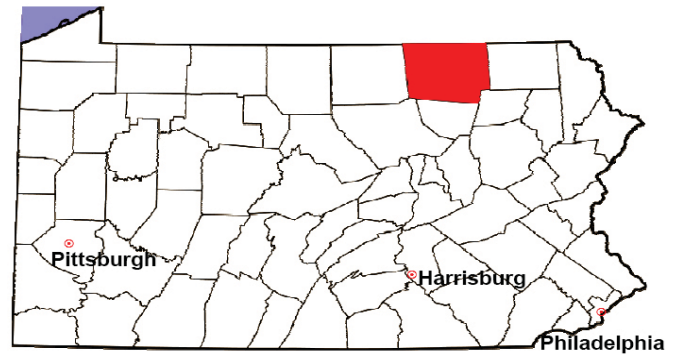
* Dependency Incomplete - missing August through December due to changeover to CPCMS Dependency module.

Status Offenses New Cases Filed, 2000-2008



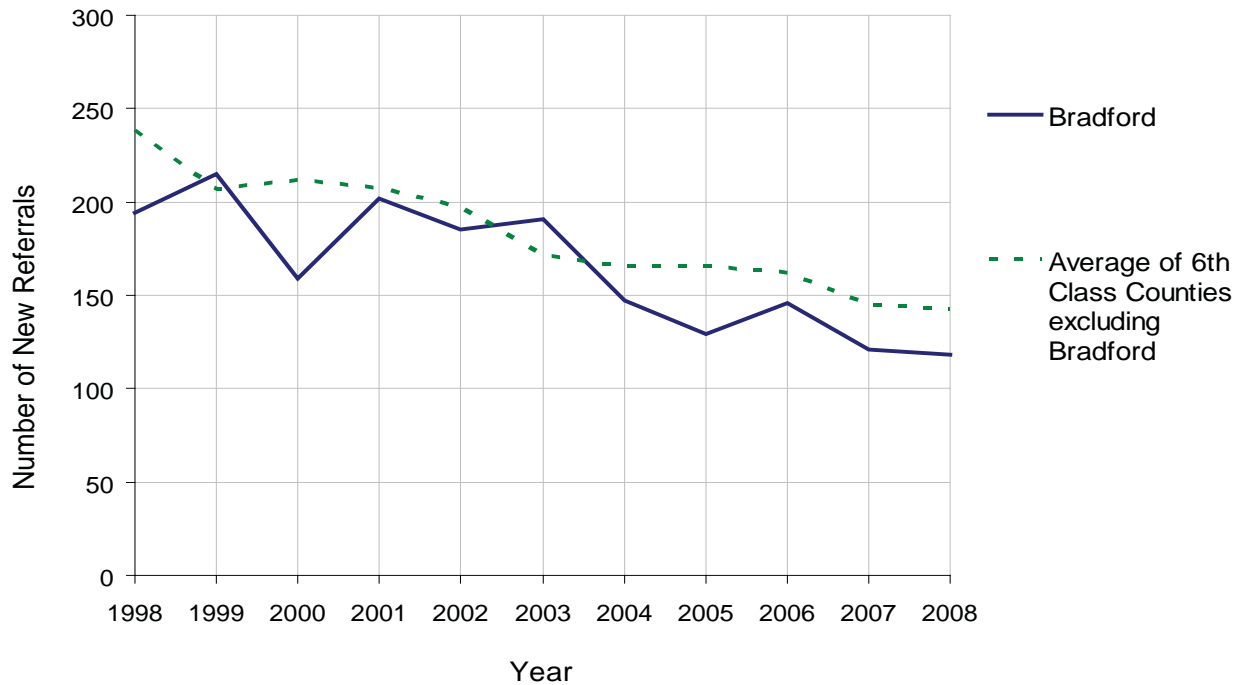
BRADFORD COUNTY

2008 Population Estimate: 61,233
 Class of County: 6th
 No. of Common Pleas Court Judgeships: 2



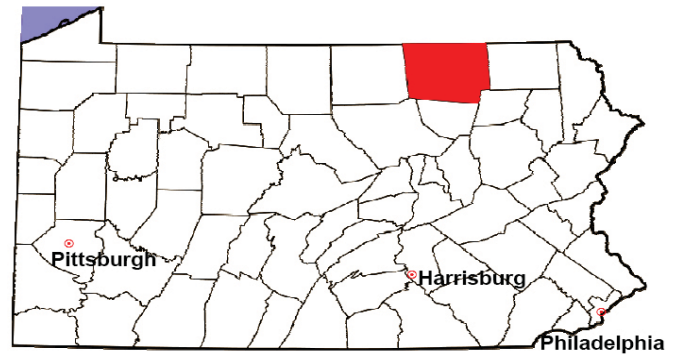
2008 Juvenile Delinquency	No. of Referrals	%
Cases Pending 1/1/08	28	
New Referrals in '08	118	
Cases Available for Processing	146	
Processed By:		
Judge	2	1.6%
Non-Judicial Officer	120	98.4%
Other	0	0.0%
Cases Processed	122	100.0%
Cases Pending 12/31/08	24	

Juvenile Delinquency New Referrals, 1998-2008



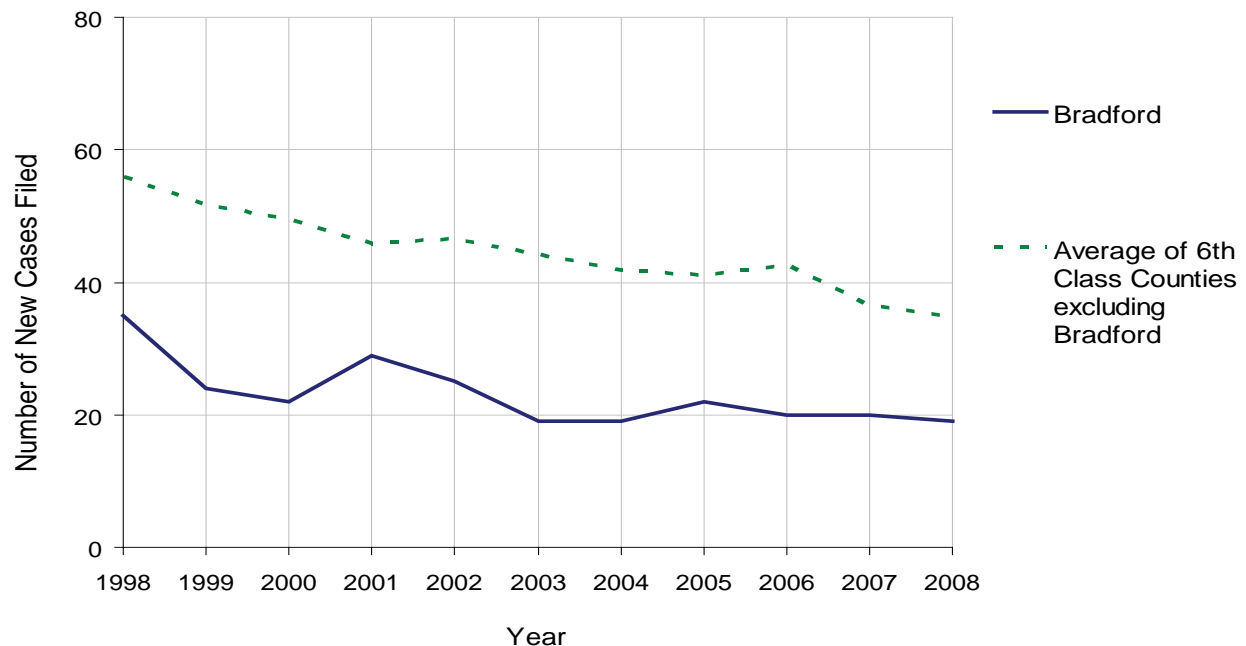
BRADFORD COUNTY

2008 Population Estimate: 61,233
 Class of County: 6th
 No. of Common Pleas Court Judgeships: 2



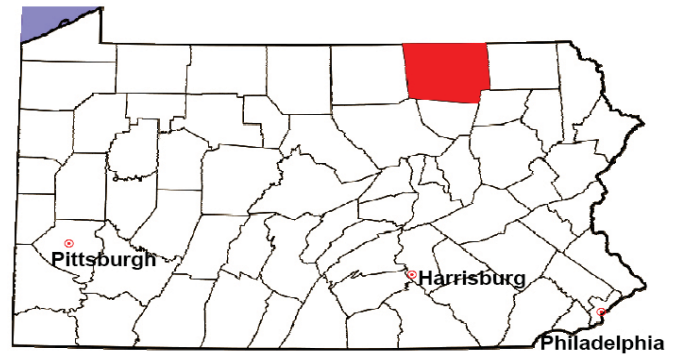
2008 Accounts	No. of Accounts	%
Cases Pending 1/1/08	7	
New Cases Filed in '08	19	
Cases Available for Processing	26	
Processed By:		
Contested before a Judge	0	0.0%
Contested before a Non-Judicial Officer	0	0.0%
Uncontested	17	100.0%
Other	0	0.0%
Cases Processed	17	100.0%
Cases Pending 12/31/08	9	

Accounts New Cases Filed, 1998-2008



BRADFORD COUNTY

2008 Population Estimate: 61,233
 Class of County: 6th
 No. of Common Pleas Court Judgeships: 2

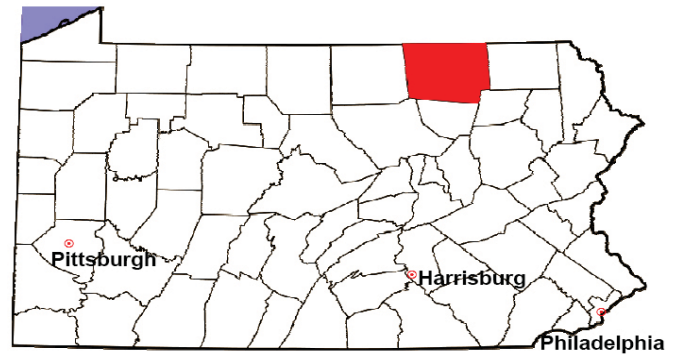


2008 Adoptions		No. of Cases	%
Cases Pending 1/1/08		1	
New Cases Filed in '08		28	
Cases Available for Processing		29	
Processed By:			
Contested before a Judge	Granted	0	0.0%
	Denied	0	0.0%
Uncontested	Granted	24	100.0%
	Denied	0	0.0%
Other		0	0.0%
Cases Processed		24	100.0%
Cases Pending 12/31/08		5	

Note: Prior to 2008, each petition was counted as one new case, regardless of the number of children listed on the petition. Starting in 2008, each child listed on a petition is counted as a separate case. Therefore, statistics for 2008 should not be compared with those for previous years.

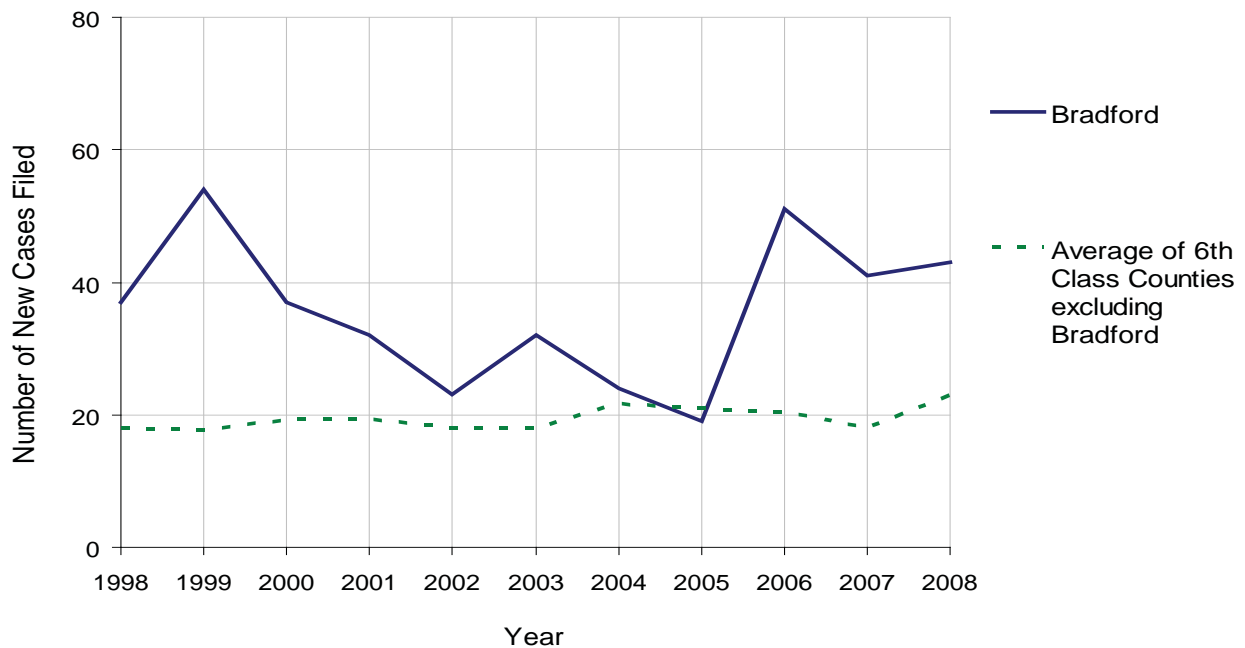
BRADFORD COUNTY

2008 Population Estimate: 61,233
 Class of County: 6th
 No. of Common Pleas Court Judgeships: 2



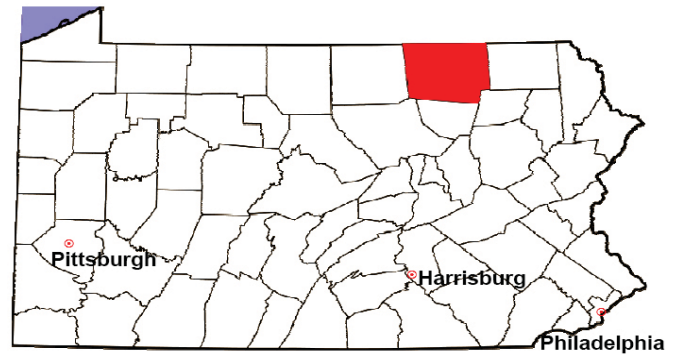
2008 Relinquishments/Terminations	No. of Petitions	%
Cases Pending 1/1/08	25	
New Cases Filed in '08	43	
Cases Available for Processing	68	
Processed By:		
Contested before a Judge	15	28.3%
Uncontested	37	69.8%
Other	1	1.9%
Cases Processed	53	100.0%
Cases Pending 12/31/08	15	

Relinquishments/Terminations New Cases Filed, 1998-2008



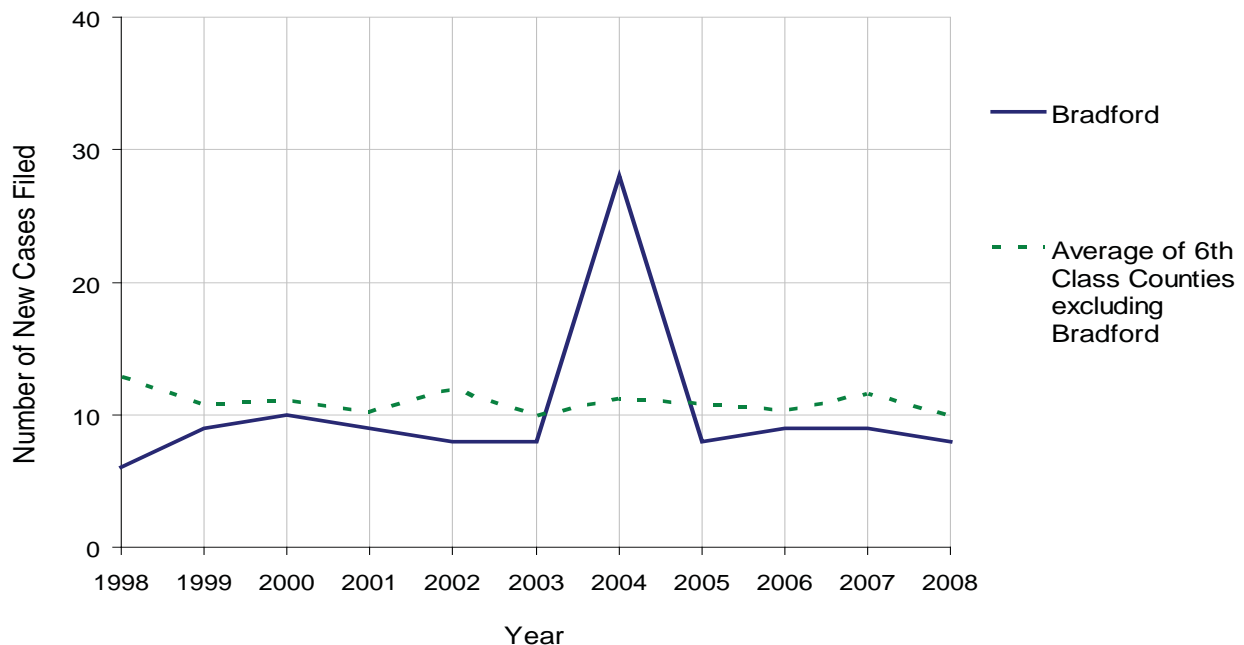
BRADFORD COUNTY

2008 Population Estimate: 61,233
 Class of County: 6th
 No. of Common Pleas Court Judgeships: 2



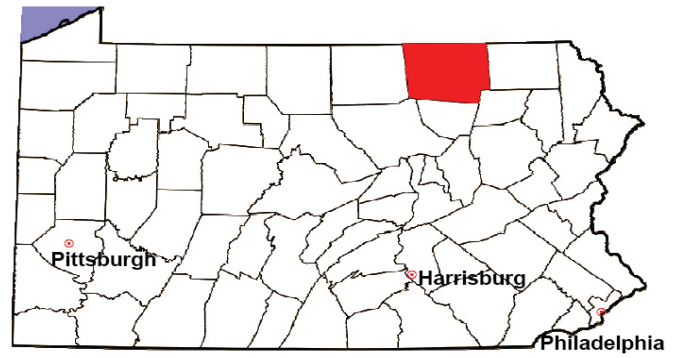
2008 Appointment of Guardians	No. of Petitions	%
Cases Pending 1/1/08	0	
New Cases Filed in '08	8	
Cases Available for Processing	8	
Processed By:		
Contested before a Judge	0	0.0%
Uncontested	5	83.3%
Other	1	16.7%
Cases Processed	6	100.0%
Cases Pending 12/31/08	2	

Appointment of Guardians New Cases Filed, 1998-2008



BRADFORD COUNTY

2008 Population Estimate: 61,233
 Class of County: 6th
 No. of Common Pleas Court Judgeships: 2



2008 Jury Activity & Performance Measures		
A. Juror Days		1,109
B. Number Sent to Voir Dire		1,489
	Voir Dire Attendance Rate $(B/A * 100)$	134.3%
C. Number of Voir Dires Started		36
	Juror Days Per Voir Dire Starts (A/C)	31
D. Number of Jurors Selected		487
	Juror Selection Rate $(D/B * 100)$	32.7%
E. Number of Jury Trials Started		31
	Juror Days Per Trial Starts (A/E)	36
	Number of Voir Dires Not Resulting in Trial $(C-E)$	5
	Percent Voir Dires Not Resulting in Trial $(C-E)/C * 100$	13.9%
F. Pool Days		17
G. Zero Panel Days		0
	Percent Zero Panel Days $(G/F * 100)$	0.0%
H. Total Juror Fees Incurred		\$23,827
	Average Juror Fees Per Trial (H/E)	\$769

Average Juror Fees Per Trial, 1998-2008

