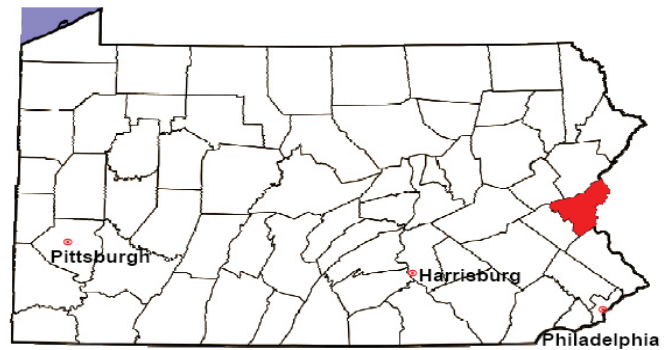


NORTHAMPTON COUNTY

2008 Population Estimate: 294,787

Class of County: 3rd

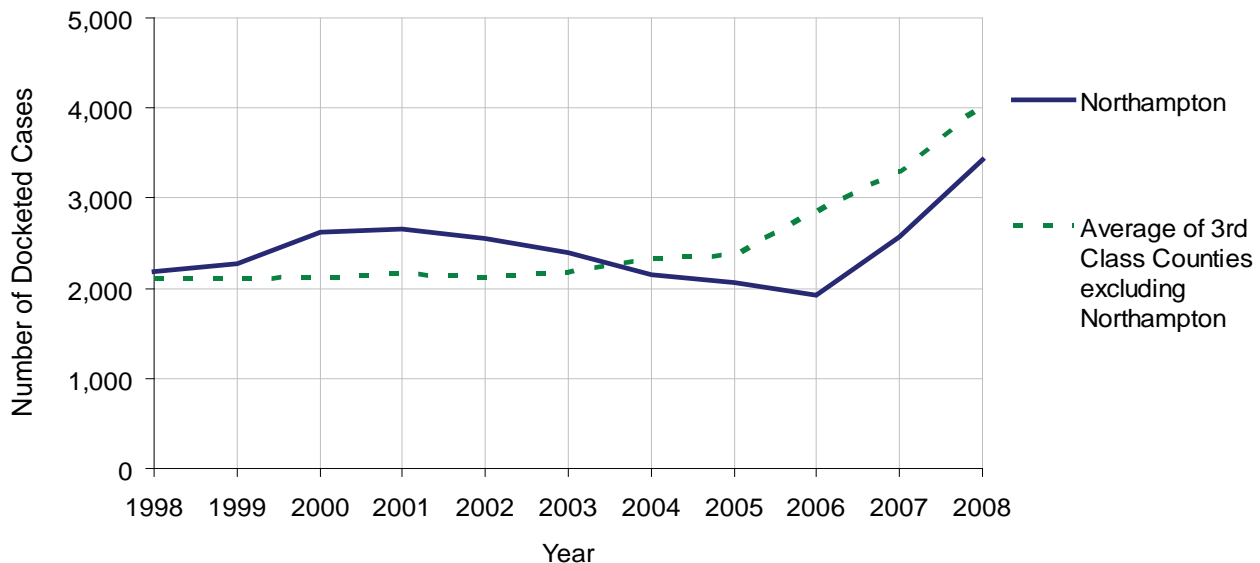
No. of Common Pleas Court Judgeships: 8



2008 Civil		Civil Action		
Docketed Cases		3,430		
Arbitrated Cases		197		
Trial-Ready Cases:		Civil Action	Other	Total
Cases Pending 1/1/08		68	7	75
Became Trial Ready in '08		194	14	208
Restored to Trial List		4	0	4
Appeals from Arbitration		30	0	30
Cases Available for Trial		296	21	317
Disposed By:				
Settlement		130	5	135
Non-Jury Trial		42	4	46
Jury Trial		15	0	15
Stricken from Trial List		34	0	34
Other		14	0	14
Cases Disposed		235	9	244
Cases Pending 12/31/08		61	12	73

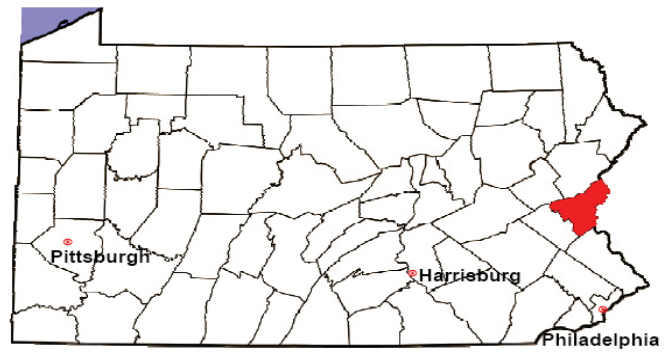
Age of Trial-Ready Cases as of 12/31/08 (Civil Action Only)		
0-6 months	59	97%
7-12 months	2	3%
13-18 months	0	0%
19-24 months	0	0%
25-30 months	0	0%
31-36 months	0	0%
Over 36 months	0	0%
Total	61	100%

Docketed Cases, 1998-2008



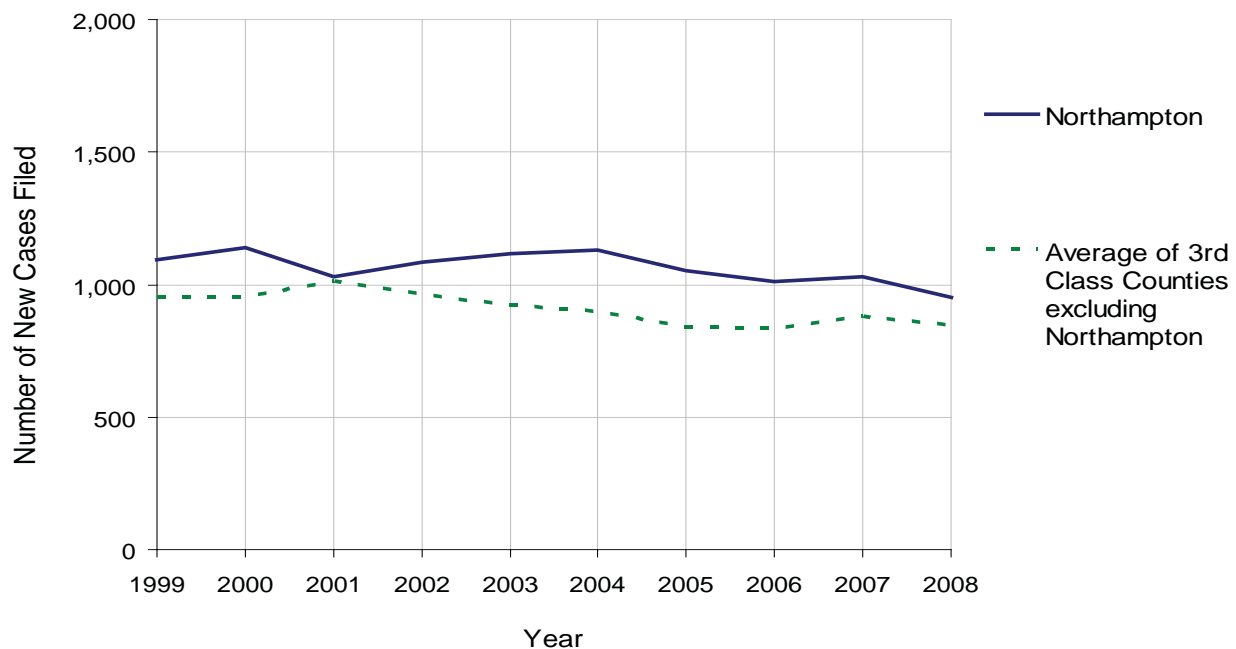
NORTHAMPTON COUNTY

2008 Population Estimate: 294,787
 Class of County: 3rd
 No. of Common Pleas Court Judgeships: 8



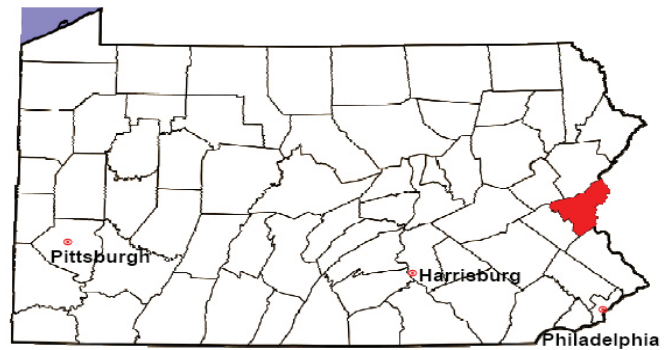
2008 Protection From Abuse	No. of Petitions	%
Cases Pending 1/1/08	104	
New Cases Filed in '08	950	
Cases Available for Processing	1,054	
Processed By:		
Final Order After Hearing	330	35.4%
Final Order by Stipulation or Agreement	80	8.6%
Dismissal	278	29.8%
Withdrawal	243	26.1%
Other	1	0.1%
Cases Processed	932	100.0%
Cases Pending 12/31/08	122	

PFA New Cases Filed, 1999-2008



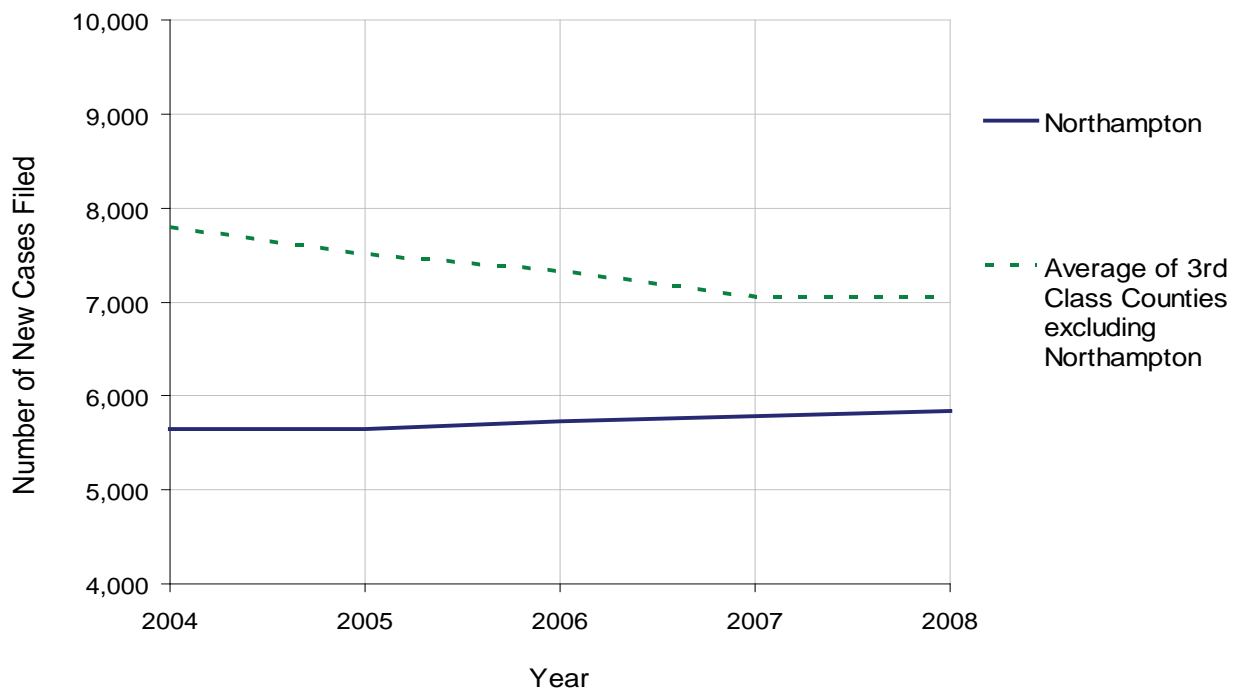
NORTHAMPTON COUNTY

2008 Population Estimate: 294,787
 Class of County: 3rd
 No. of Common Pleas Court Judgeships: 8



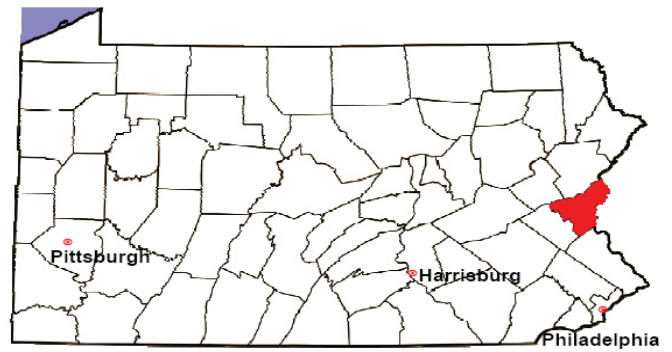
2008 Spousal & Child Support	No. of Petitions	%
Cases Pending 1/1/08	1,285	
New Cases Filed in '08	5,840	
Dockets Transferred In (+)	136	
Dockets Transferred Out (-)	115	
Cases Available for Processing	7,146	
Processed By:		
Judge	509	8.4%
Intake Officer	5,542	91.6%
Hearing Officer	0	0.0%
Other	0	0.0%
Cases Processed	6,051	100.0%
Cases Pending 12/31/08	1,095	

Spousal & Child Support New Cases Filed, 1998-2008



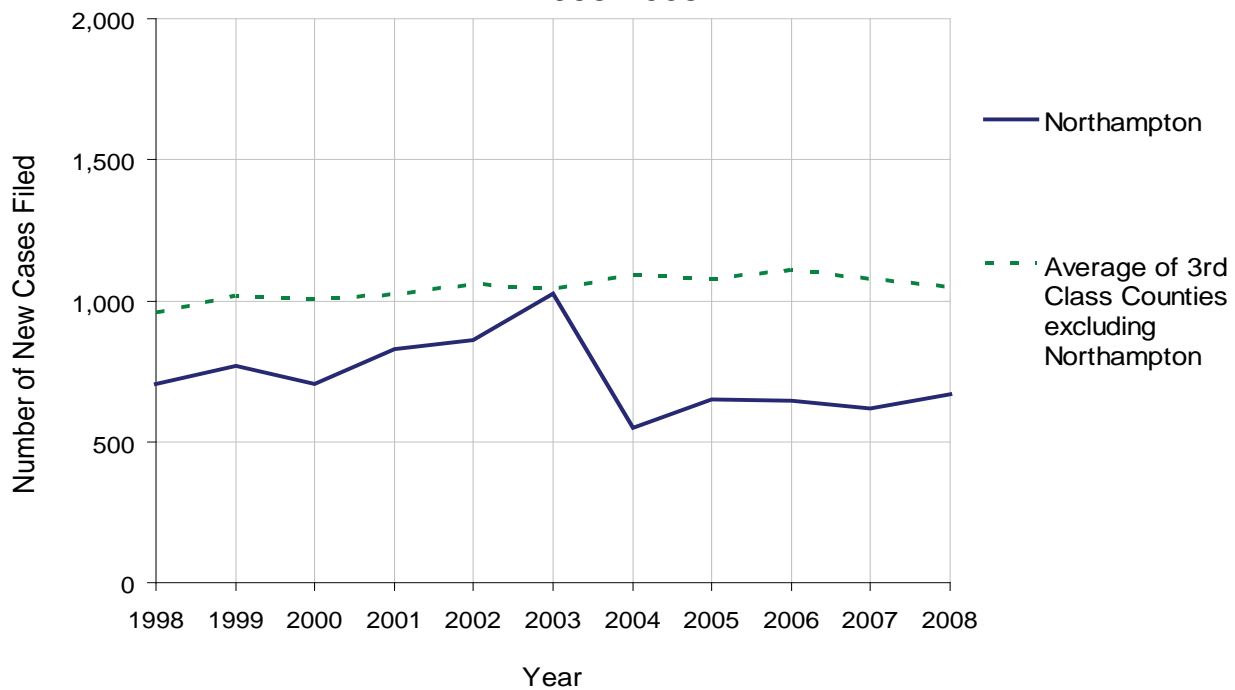
NORTHAMPTON COUNTY

2008 Population Estimate: 294,787
 Class of County: 3rd
 No. of Common Pleas Court Judgeships: 8



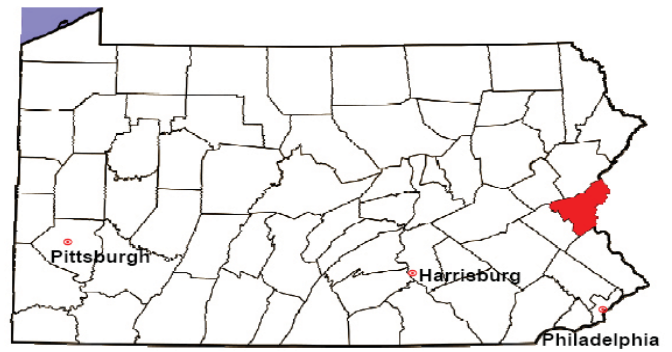
2008 Custody/Partial Custody/Visitation	No. of Petitions	%
Cases Pending 1/1/08	222	
New Cases Filed in '08	666	
Cases Available for Processing	888	
Processed By:		
Judge	57	8.5%
Non-Judicial Officer	327	48.5%
Other	290	43.0%
Cases Processed	674	100.0%
Cases Pending 12/31/08	214	

Custody/Partial Custody/Visitation New Cases Filed
 1998-2008



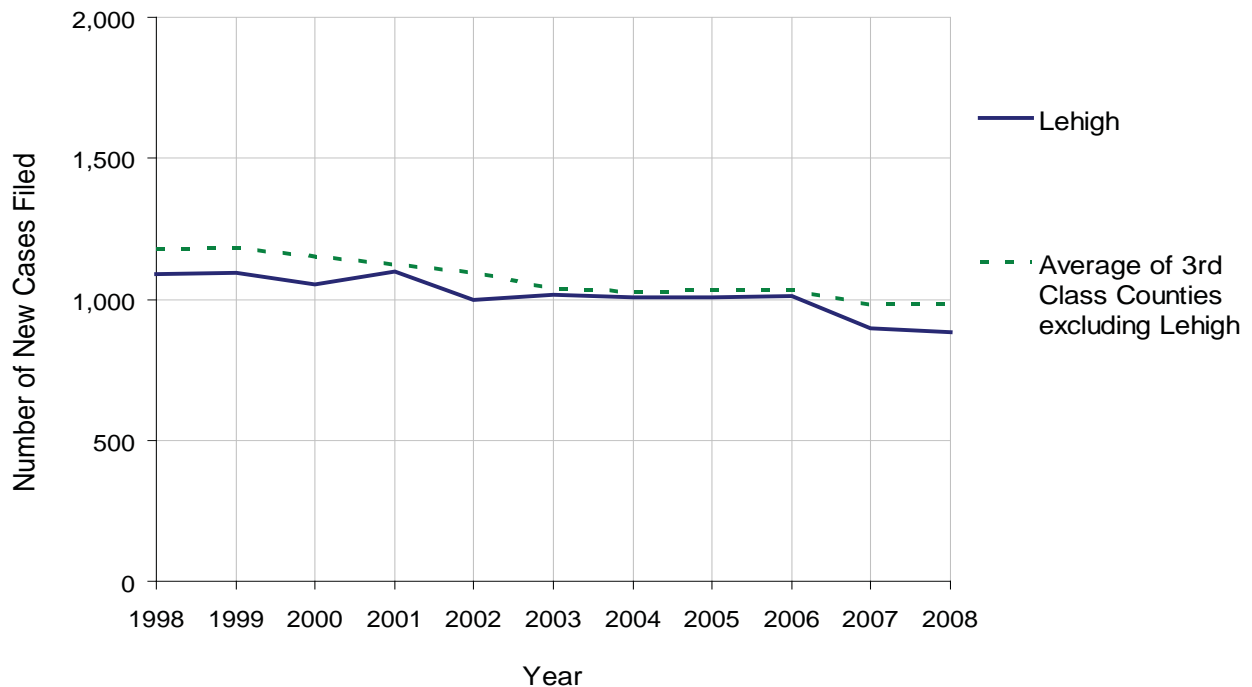
NORTHAMPTON COUNTY

2008 Population Estimate: 294,787
 Class of County: 3rd
 No. of Common Pleas Court Judgeships: 8



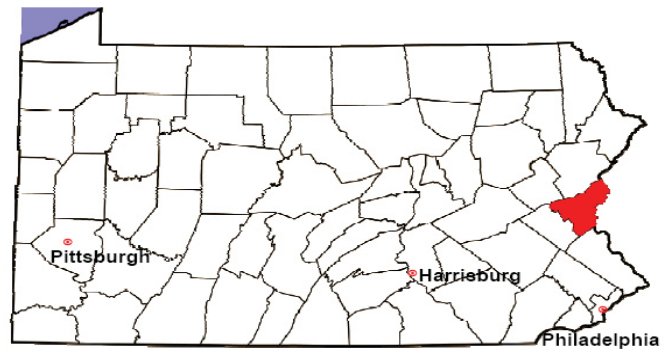
2008 Divorce	No. of Petitions	%
Cases Pending 1/1/08	1,771	
New Cases Filed in '08	893	
Cases Available for Processing	2,664	
Processed By:		
Contested Before a Judge	1	0.1%
Contested Before a Master	100	13.0%
Uncontested	665	86.5%
Other	3	0.4%
Cases Processed	769	100.0%
Cases Pending 12/31/08	1,895	

Divorce New Cases Filed, 1998-2008



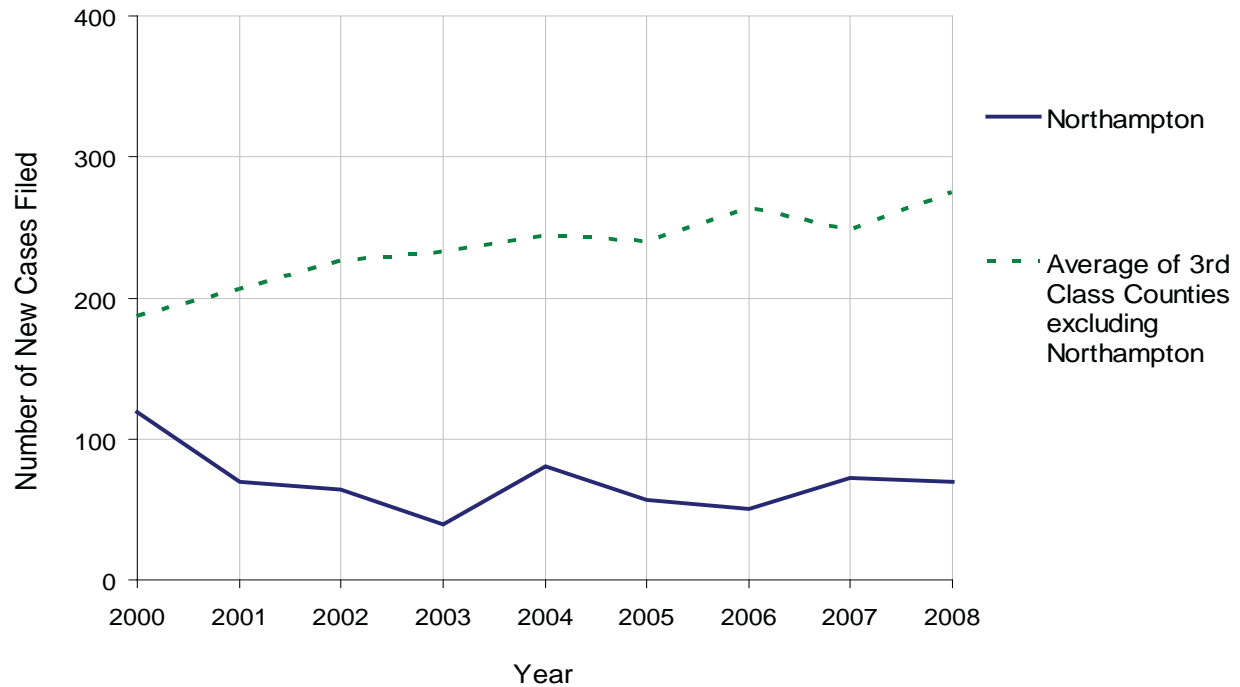
NORTHAMPTON COUNTY

2008 Population Estimate: 294,787
 Class of County: 3rd
 No. of Common Pleas Court Judgeships: 8



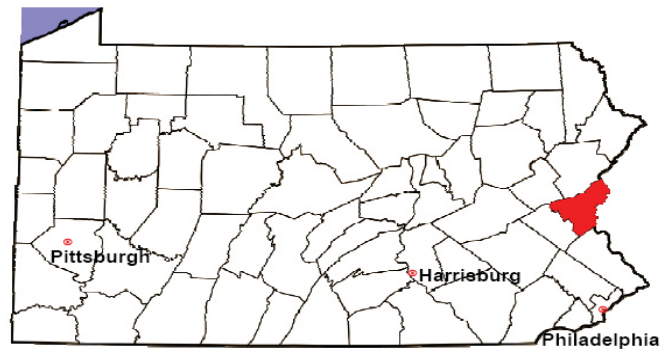
2008 Juvenile Dependency Abuse/Neglect	No. of Petitions	%
Cases Pending 1/1/08	53	
New Cases Filed in '08	70	
Cases Available for Processing	123	
Processed By:		
Judge	0	0.0%
Non-Judicial Officer	68	100.0%
Other	0	0.0%
Cases Processed	68	100.0%
Cases Pending 12/31/08	55	

Abuse/Neglect New Cases Filed, 2000-2008



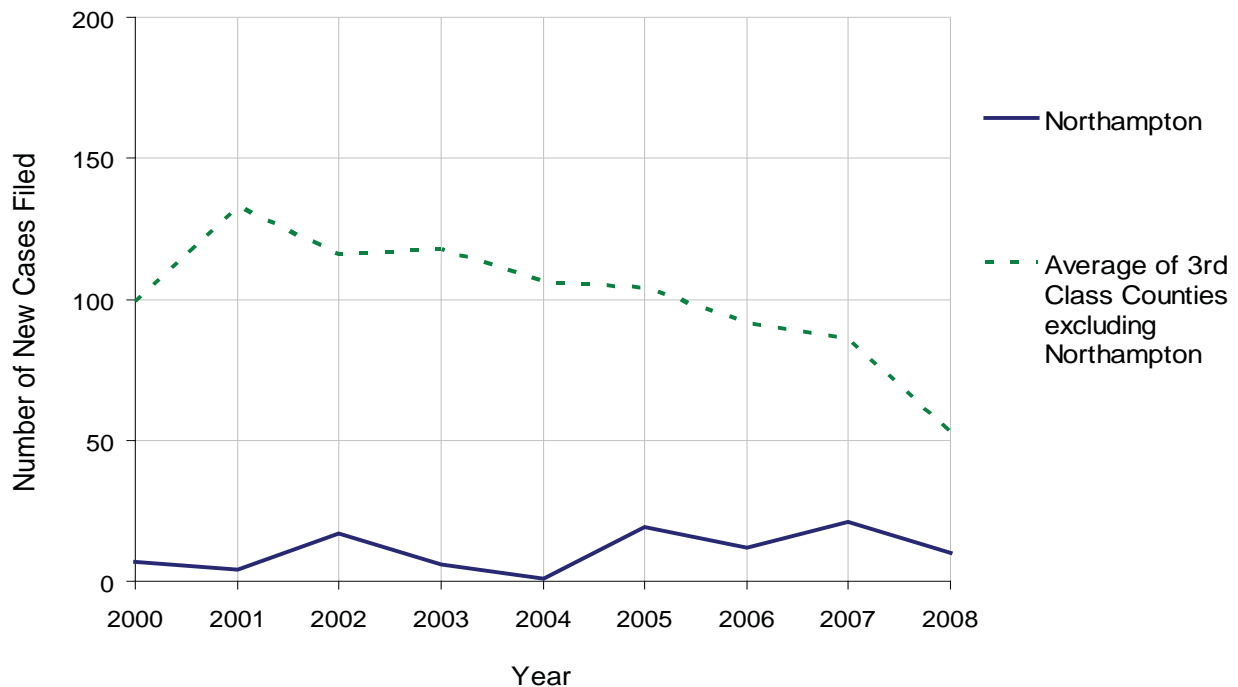
NORTHAMPTON COUNTY

2008 Population Estimate: 294,787
 Class of County: 3rd
 No. of Common Pleas Court Judgeships: 8



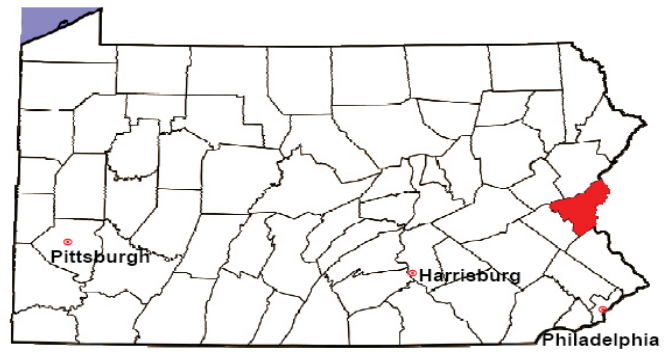
2008 Juvenile Dependency Status Offenses	No. of Petitions	%
Cases Pending 1/1/08	7	
New Cases Filed in '08	10	
Cases Available for Processing	17	
Processed By:		
Judge	0	0.0%
Non-Judicial Officer	9	100.0%
Other	0	0.0%
Cases Processed	9	100.0%
Cases Pending 12/31/08	8	

Status Offenses New Cases Filed, 2000-2008



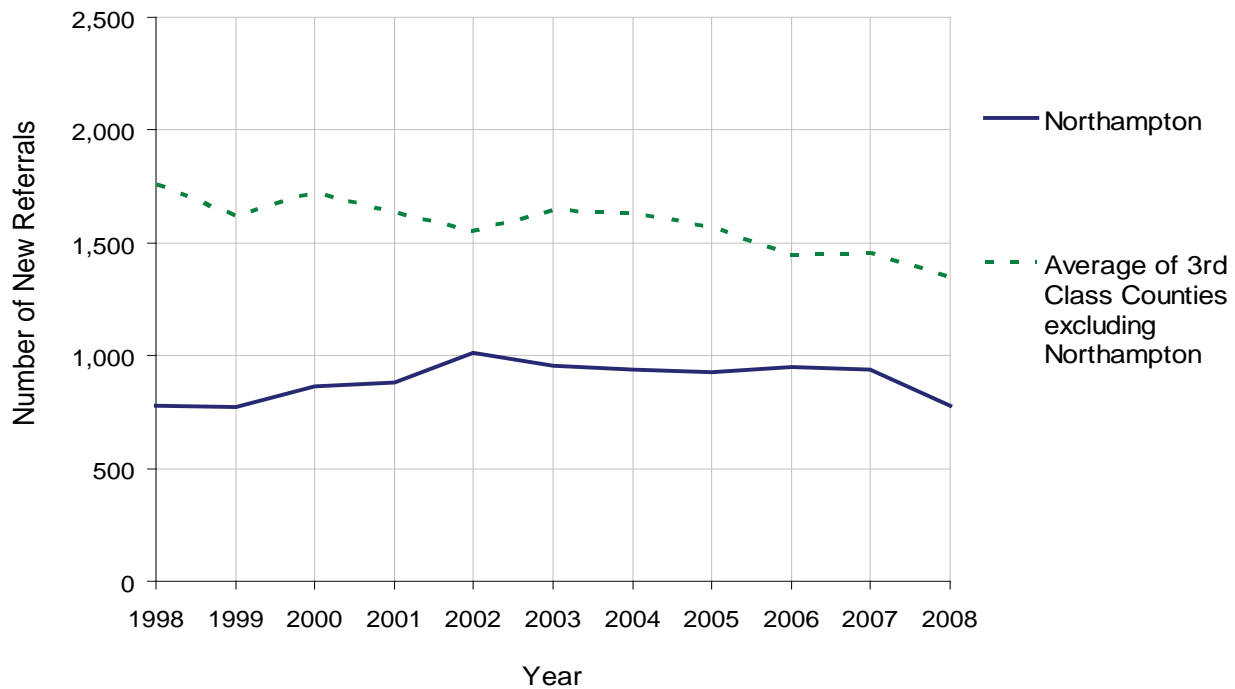
NORTHAMPTON COUNTY

2008 Population Estimate: 294,787
 Class of County: 3rd
 No. of Common Pleas Court Judgeships: 8



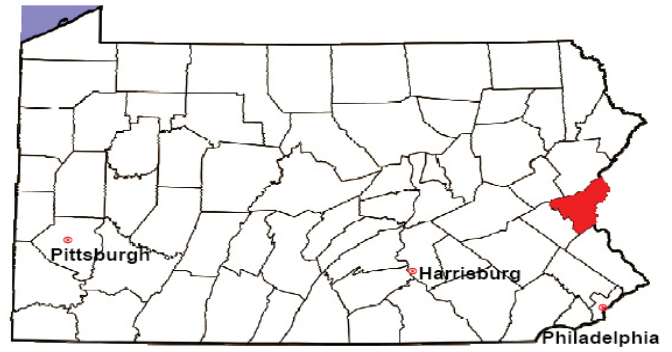
2008 Juvenile Delinquency	No. of Referrals	%
Cases Pending 1/1/08	326	
New Referrals in '08	777	
Cases Available for Processing	1,103	
Processed By:		
Judge	500	66.3%
Non-Judicial Officer	217	28.8%
Other	37	4.9%
Cases Processed	754	100.0%
Cases Pending 12/31/08	349	

Juvenile Delinquency New Referrals, 1998-2008



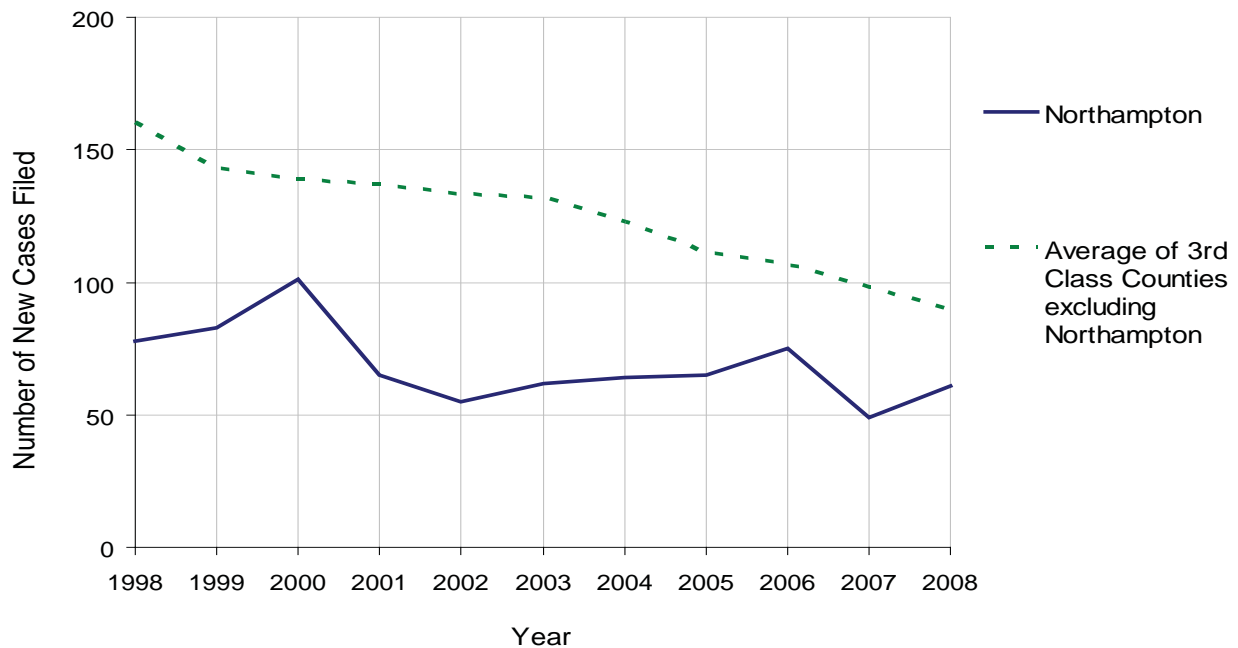
NORTHAMPTON COUNTY

2008 Population Estimate: 294,787
 Class of County: 3rd
 No. of Common Pleas Court Judgeships: 8



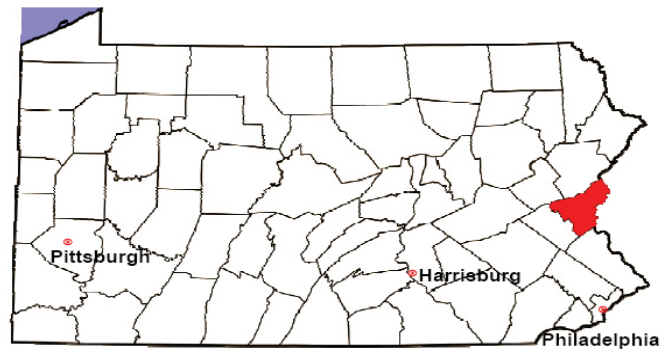
2008 Accounts	No. of Accounts	%
Cases Pending 1/1/08	6	
New Cases Filed in '08	61	
Cases Available for Processing	67	
Processed By:		
Contested before a Judge	8	12.5%
Contested before a Non-Judicial Officer	0	0.0%
Uncontested	56	87.5%
Other	0	0.0%
Cases Processed	64	100.0%
Cases Pending 12/31/08	3	

Accounts New Cases Filed, 1998-2008



NORTHAMPTON COUNTY

2008 Population Estimate: 294,787
 Class of County: 3rd
 No. of Common Pleas Court Judgeships: 8

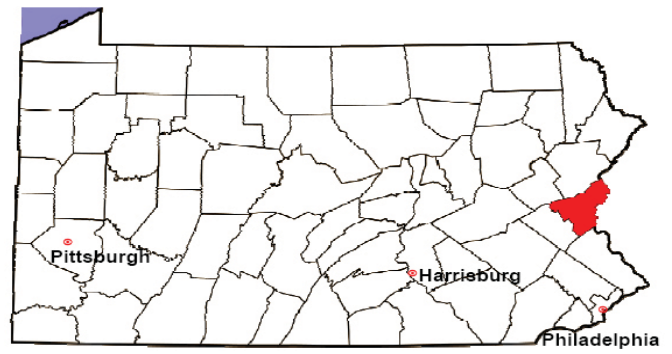


2008 Adoptions		No. of Cases	%
Cases Pending 1/1/08		5	
New Cases Filed in '08		69	
Cases Available for Processing		74	
Processed By:			
Contested before a Judge	Granted	5	7.0%
	Denied	0	0.0%
Uncontested	Granted	64	90.1%
	Denied	0	0.0%
Other		2	2.8%
Cases Processed		71	100.0%
Cases Pending 12/31/08		3	

Note: Prior to 2008, each petition was counted as one new case, regardless of the number of children listed on the petition. Starting in 2008, each child listed on a petition is counted as a separate case. Therefore, statistics for 2008 should not be compared with those for previous years.

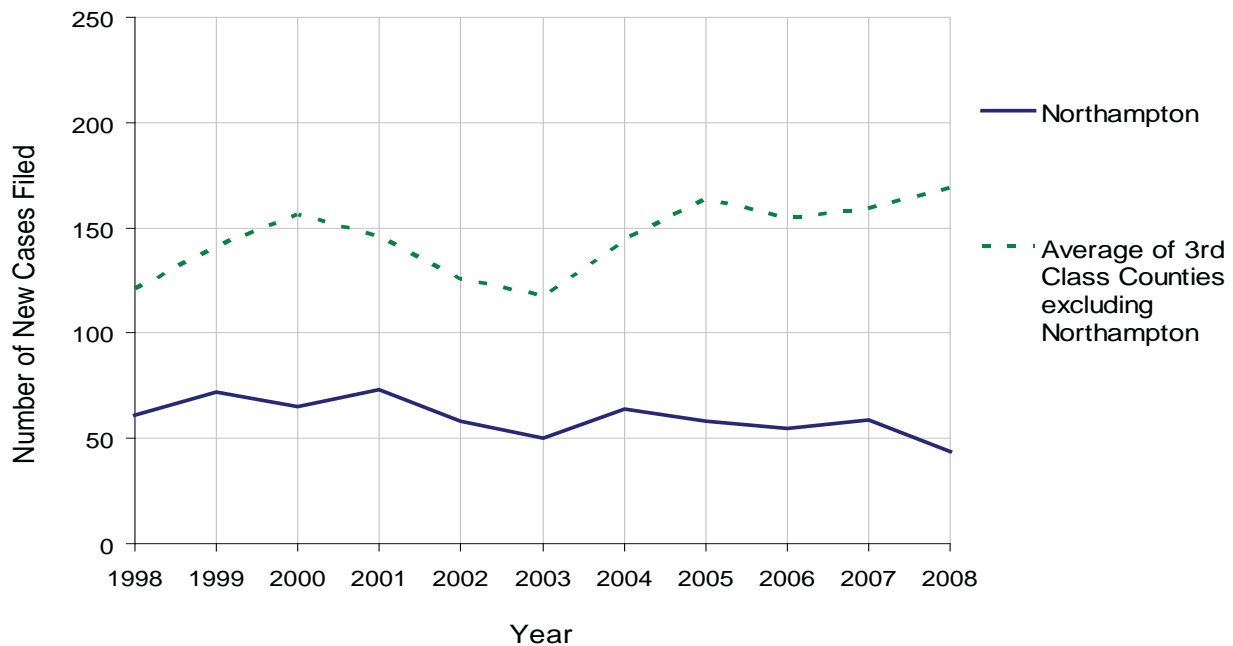
NORTHAMPTON COUNTY

2008 Population Estimate: 294,787
 Class of County: 3rd
 No. of Common Pleas Court Judgeships: 8



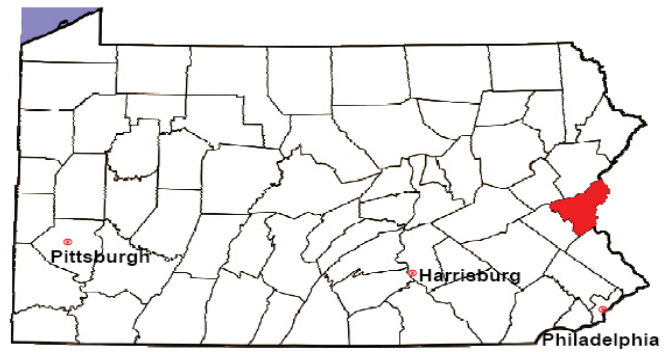
2008 Relinquishments/Terminations	No. of Petitions	%
Cases Pending 1/1/08	22	
New Cases Filed in '08	44	
Cases Available for Processing	66	
Processed By:		
Contested before a Judge	19	34.5%
Uncontested	32	58.2%
Other	4	7.3%
Cases Processed	55	100.0%
Cases Pending 12/31/08	11	

Relinquishments/Terminations New Cases Filed, 1998-2008



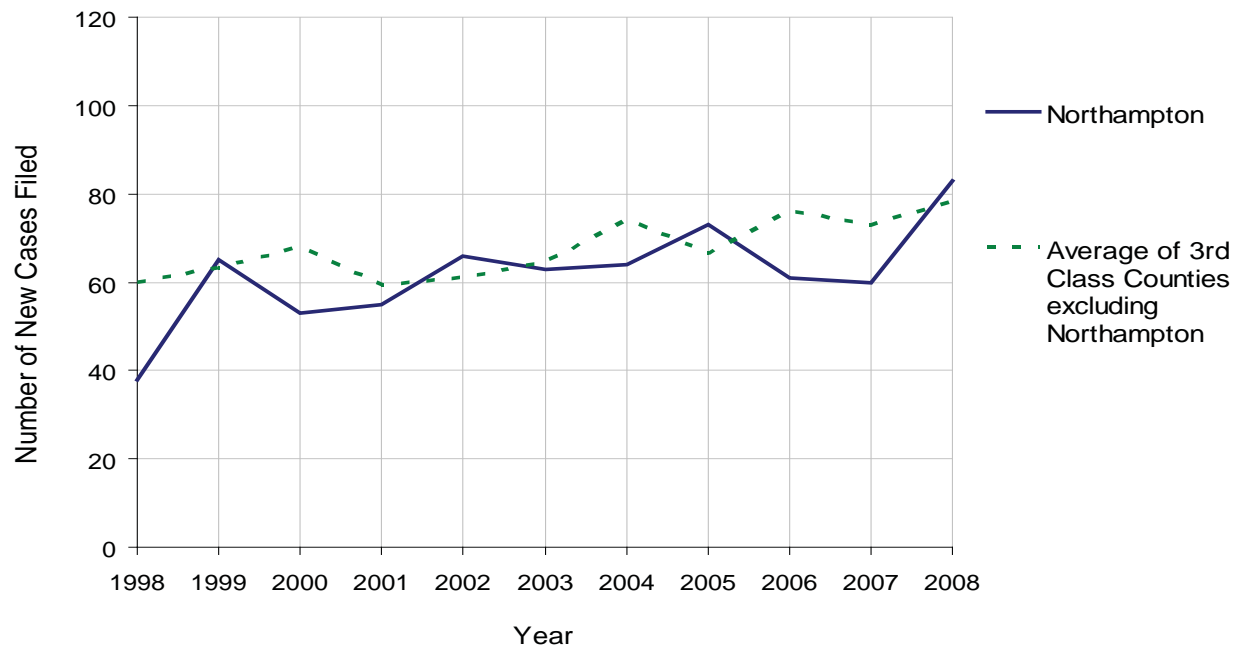
NORTHAMPTON COUNTY

2008 Population Estimate: 294,787
 Class of County: 3rd
 No. of Common Pleas Court Judgeships: 8



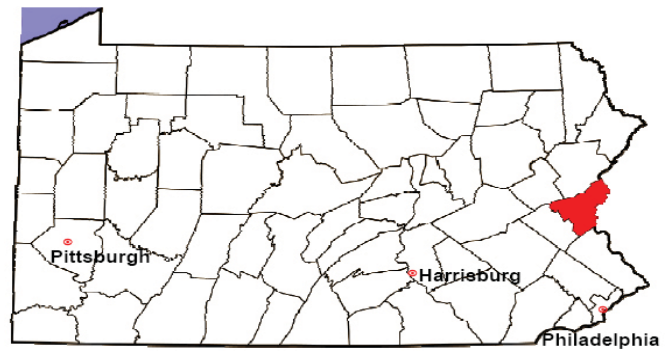
2008 Appointment of Guardians	No. of Petitions	%
Cases Pending 1/1/08	2	
New Cases Filed in '08	83	
Cases Available for Processing	85	
Processed By:		
Contested before a Judge	4	5.1%
Uncontested	71	91.0%
Other	3	3.8%
Cases Processed	78	100.0%
Cases Pending 12/31/08	7	

Appointment of Guardians New Cases Filed, 1998-2008



NORTHAMPTON COUNTY

2008 Population Estimate: 294,787
 Class of County: 3rd
 No. of Common Pleas Court Judgeships: 8



2008 Jury Activity & Performance Measures		
A. Juror Days	4,430	
B. Number Sent to Voir Dire	2,415	
Voir Dire Attendance Rate $(B/A * 100)$		54.5%
C. Number of Voir Dires Started	55	
Juror Days Per Voir Dire Starts (A/C)		81
D. Number of Jurors Selected	728	
Juror Selection Rate $(D/B * 100)$		30.1%
E. Number of Jury Trials Started	49	
Juror Days Per Trial Starts (A/E)		90
Number of Voir Dires Not Resulting in Trial $(C-E)$		6
Percent Voir Dires Not Resulting in Trial $(C-E)/C * 100$		10.9%
F. Pool Days	54	
G. Zero Panel Days	17	
Percent Zero Panel Days $(G/F * 100)$		31.5%
H. Total Juror Fees Incurred	\$96,648	
Average Juror Fees Per Trial (H/E)		\$1,972

Average Juror Fees Per Trial, 1998-2008

