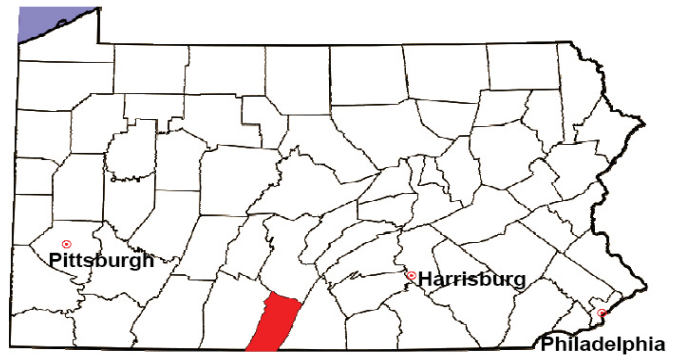


FULTON COUNTY

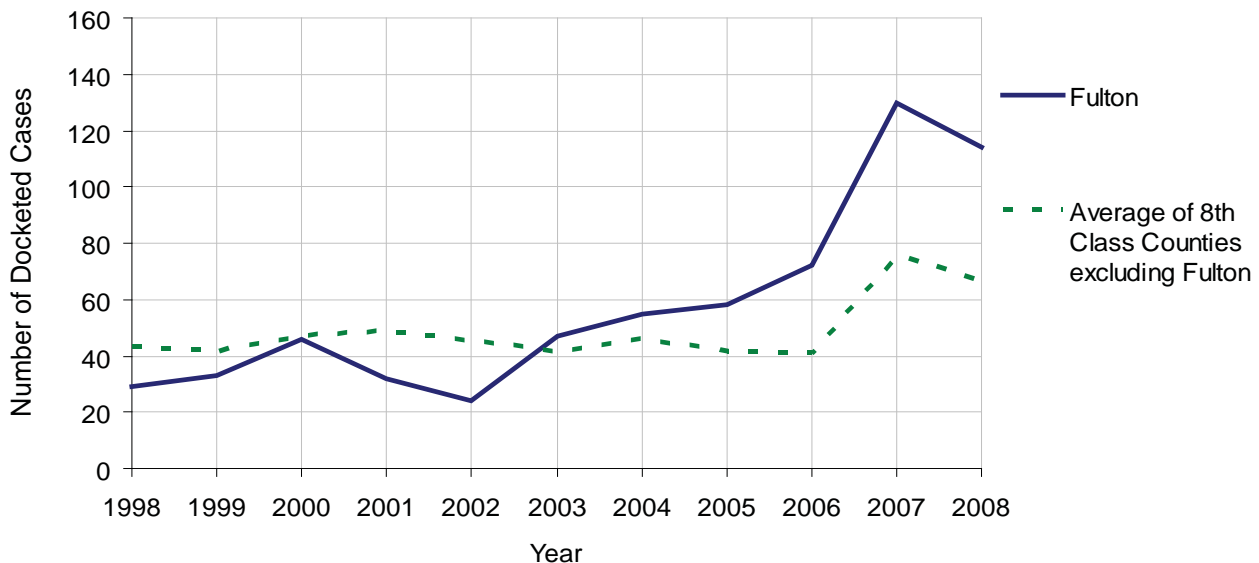
2008 Population Estimate: 14,935
 Class of County: 8th
 No. of Common Pleas Court Judgeships: 4
 (Franklin and Fulton combined)



2008 Civil		Civil Action		
Docketed Cases		114		
Arbitrated Cases		0		
Trial-Ready Cases:		Civil Action	Other	Total
Cases Pending 1/1/08		3	0	3
Became Trial Ready in '08		2	0	2
Restored to Trial List		2	0	2
Appeals from Arbitration		0	0	0
Cases Available for Trial		7	0	7
Disposed By:				
Settlement		3	0	3
Non-Jury Trial		0	0	0
Jury Trial		0	0	0
Stricken from Trial List		0	0	0
Other		1	0	1
Cases Disposed		4	0	4
Cases Pending 12/31/08		3	0	3

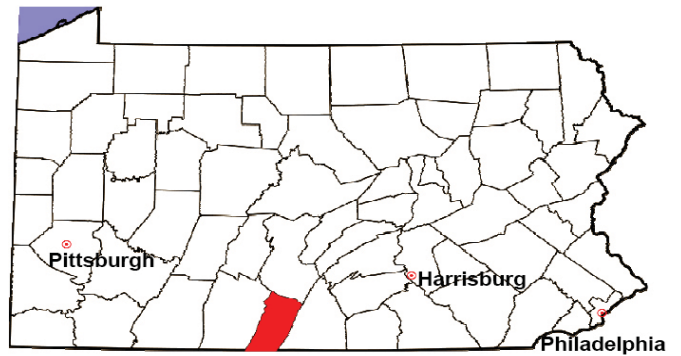
Age of Trial-Ready Cases as of 12/31/08 (Civil Action Only)		
0-6 months	0	0%
7-12 months	0	0%
13-18 months	0	0%
19-24 months	0	0%
25-30 months	0	0%
31-36 months	0	0%
Over 36 months	3	100%
Total	3	100%

Docketed Cases, 1998-2008



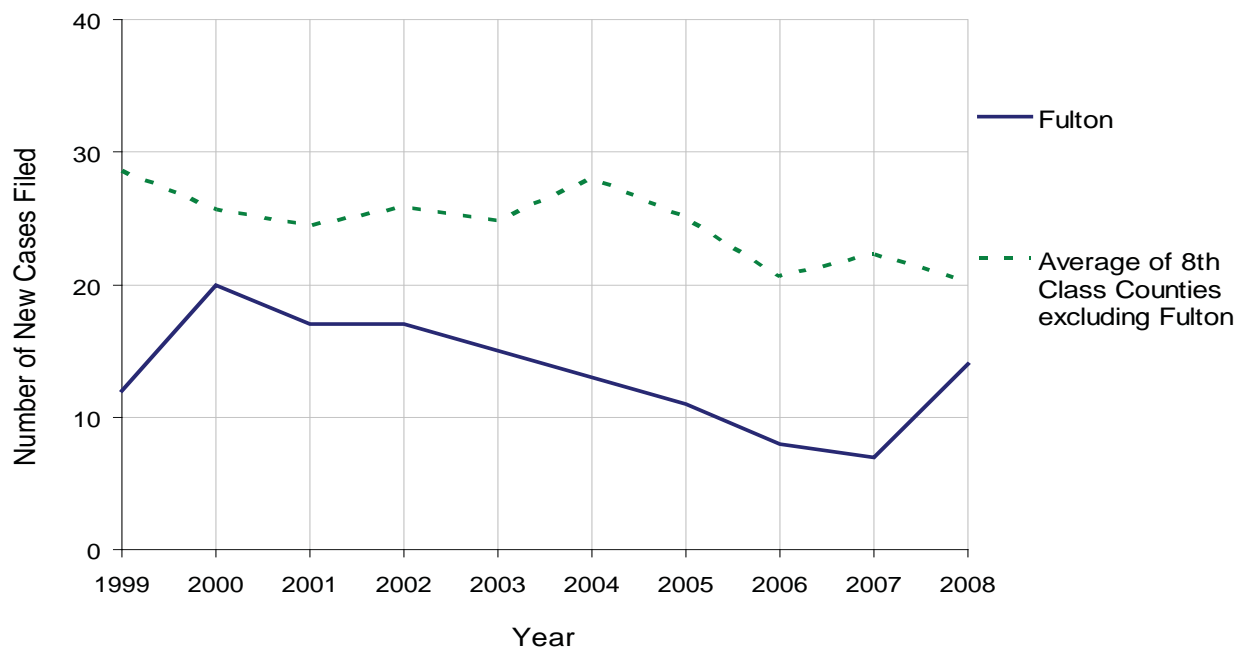
FULTON COUNTY

2008 Population Estimate: 14,935
 Class of County: 8th
 No. of Common Pleas Court Judgeships: 4
 (Franklin and Fulton combined)



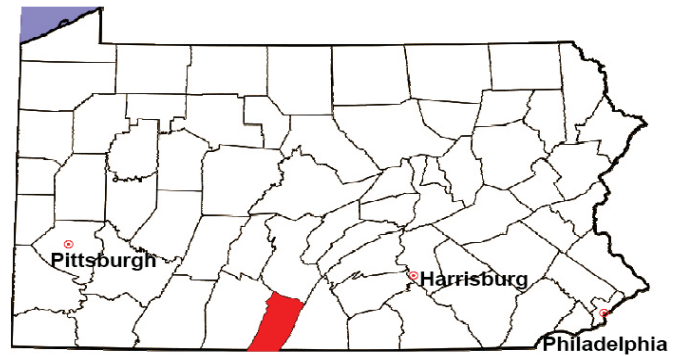
2008 Protection From Abuse	No. of Petitions	%
Cases Pending 1/1/08	2	
New Cases Filed in '08	14	
Cases Available for Processing	16	
Processed By:		
Final Order After Hearing	9	81.8%
Final Order by Stipulation or Agreement	2	18.2%
Dismissal	0	0.0%
Withdrawal	0	0.0%
Other	0	0.0%
Cases Processed	11	100.0%
Cases Pending 12/31/08	5	

PFA New Cases Filed, 1999-2008



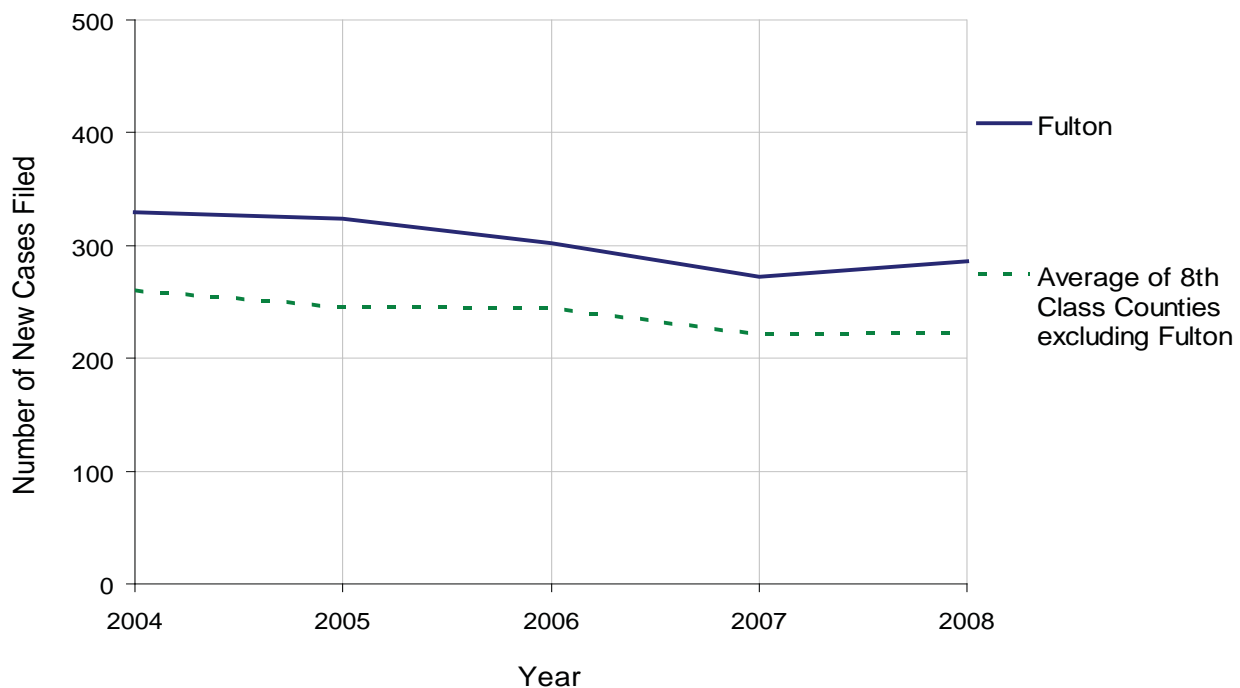
FULTON COUNTY

2008 Population Estimate: 14,935
 Class of County: 8th
 No. of Common Pleas Court Judgeships: 4
 (Franklin and Fulton combined)



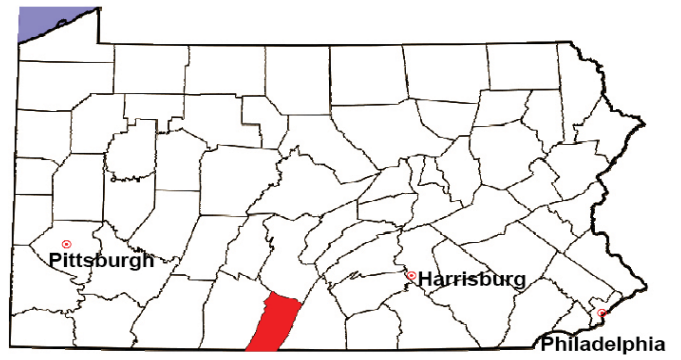
2008 Spousal & Child Support	No. of Petitions	%
Cases Pending 1/1/08	29	
New Cases Filed in '08	286	
Dockets Transferred In (+)	2	
Dockets Transferred Out (-)	6	
Cases Available for Processing	311	
Processed By:		
Judge	1	0.4%
Intake Officer	281	99.6%
Hearing Officer	0	0.0%
Other	0	0.0%
Cases Processed	282	100.0%
Cases Pending 12/31/08	29	

Spousal & Child Support New Cases Filed, 1998-2008



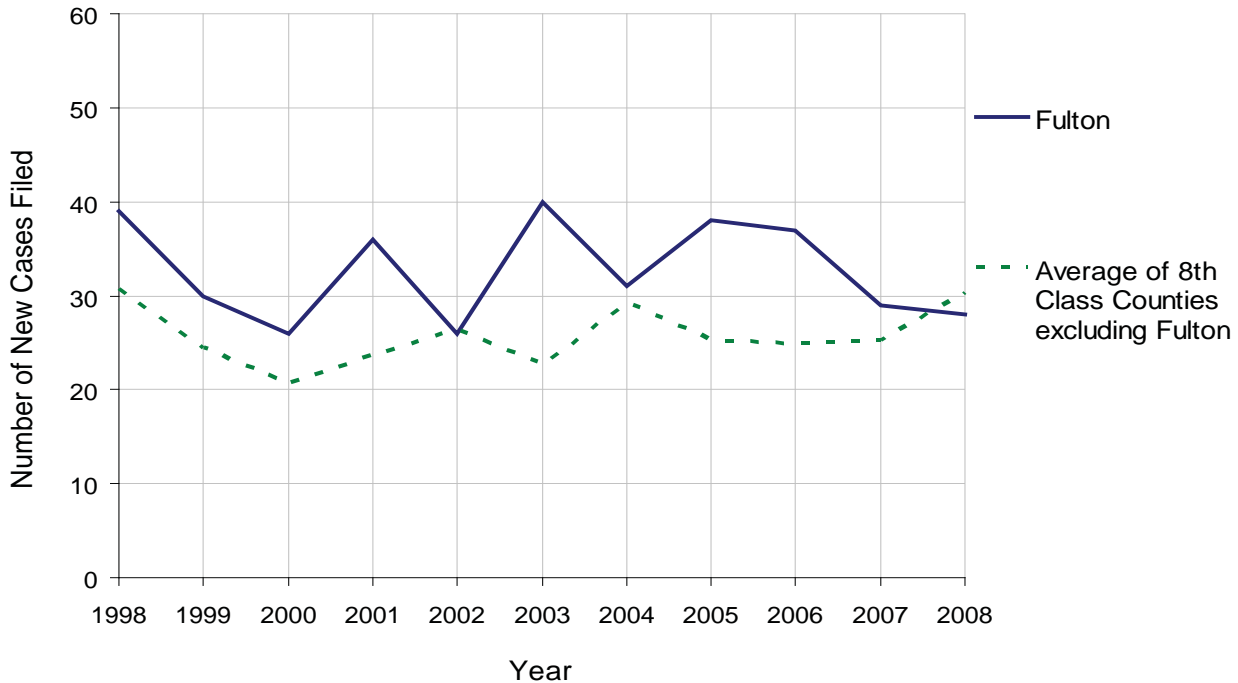
FULTON COUNTY

2008 Population Estimate: 14,935
 Class of County: 8th
 No. of Common Pleas Court Judgeships: 4
 (Franklin and Fulton combined)



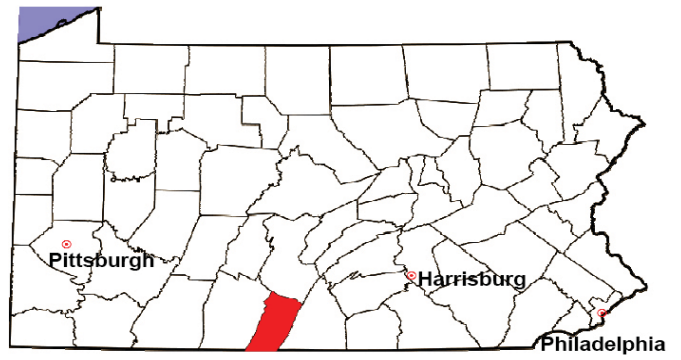
2008 Custody/Partial Custody/Visitation	No. of Petitions	%
Cases Pending 1/1/08	46	
New Cases Filed in '08	28	
Cases Available for Processing	74	
Processed By:		
Judge	1	100.0%
Non-Judicial Officer	0	0.0%
Other	0	0.0%
Cases Processed	1	100.0%
Cases Pending 12/31/08	73	

Custody/Partial Custody/Visitation New Cases Filed
 1998-2008



FULTON COUNTY

2008 Population Estimate: 14,935
 Class of County: 8th
 No. of Common Pleas Court Judgeships: 4
 (Franklin and Fulton combined)



2008 Divorce	No. of Petitions	%
Cases Pending 1/1/08	66	
New Cases Filed in '08	60	
Cases Available for Processing	126	
Processed By:		
Contested Before a Judge	45	90.0%
Contested Before a Master	0	0.0%
Uncontested	2	4.0%
Other	3	6.0%
Cases Processed	50	100.0%
Cases Pending 12/31/08	76	

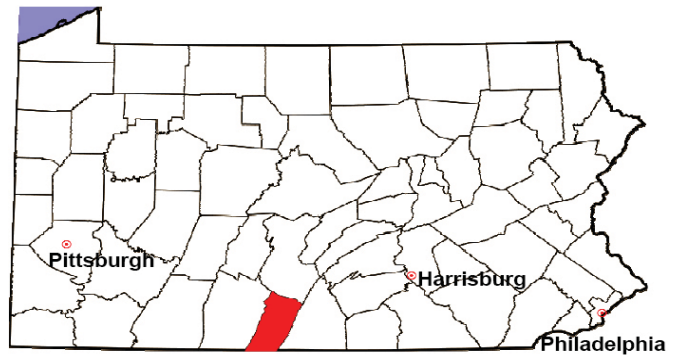
Divorce New Cases Filed, 1998-2008



* Due to a high number of out-of-district petitions, Cameron and Potter Counties have larger inventories than other 8th class counties. Therefore, it is not meaningful to compare Cameron and Potter Counties with other 8th class counties.

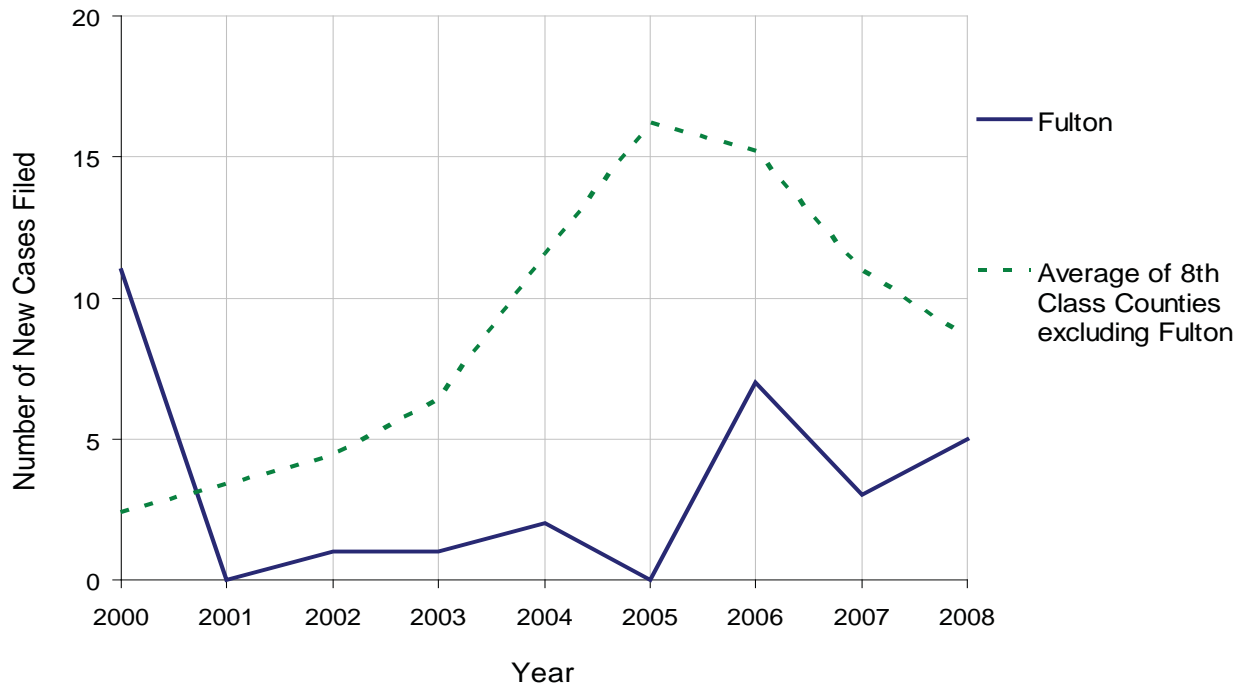
FULTON COUNTY

2008 Population Estimate: 14,935
 Class of County: 8th
 No. of Common Pleas Court Judgeships: 4
 (Franklin and Fulton combined)



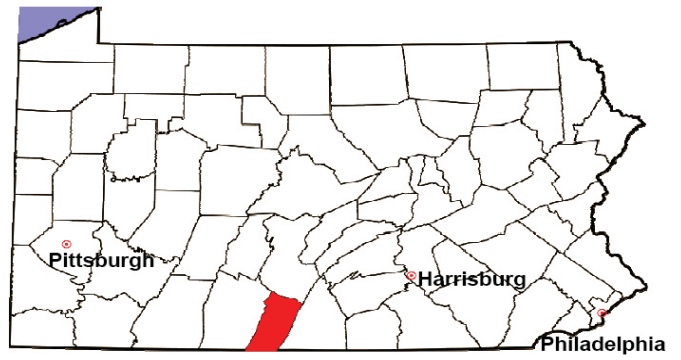
2008 Juvenile Dependency Abuse/Neglect	No. of Petitions	%
Cases Pending 1/1/08	0	
New Cases Filed in '08	5	
Cases Available for Processing	5	
Processed By:		
Judge	5	100.0%
Non-Judicial Officer	0	0.0%
Other	0	0.0%
Cases Processed	5	100.0%
Cases Pending 12/31/08	0	

Abuse/Neglect New Cases Filed, 2000-2008



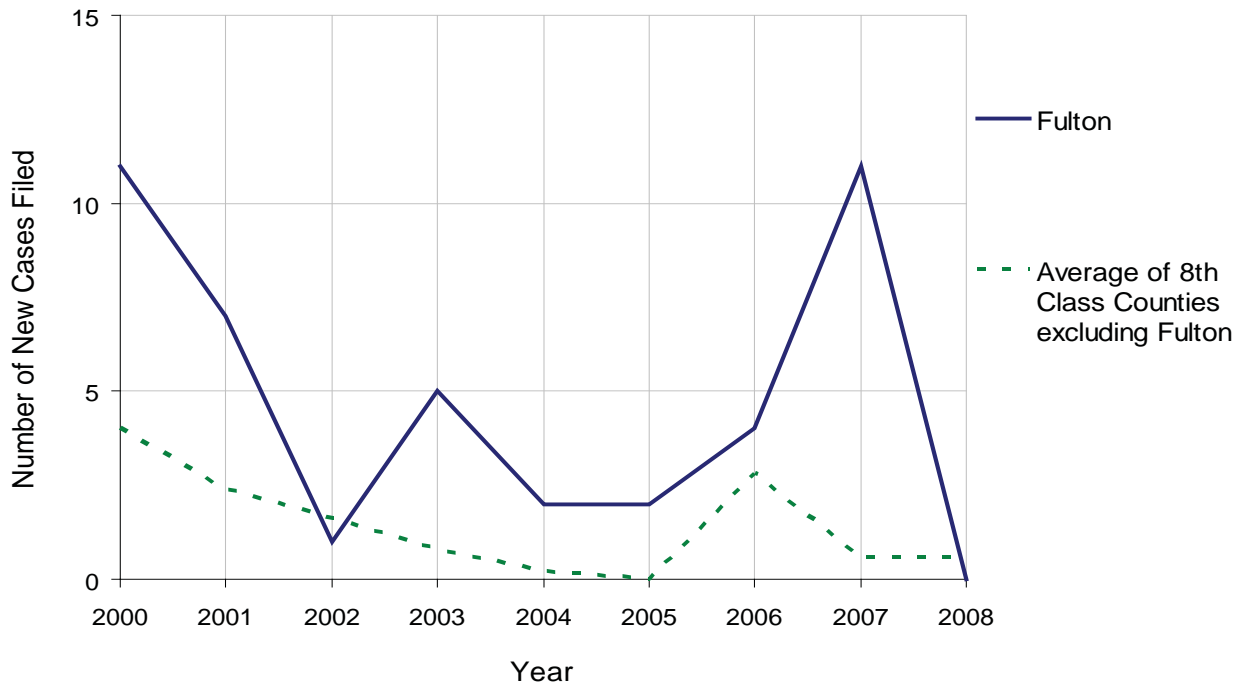
FULTON COUNTY

2008 Population Estimate: 14,935
 Class of County: 8th
 No. of Common Pleas Court Judgeships: 4
 (Franklin and Fulton combined)



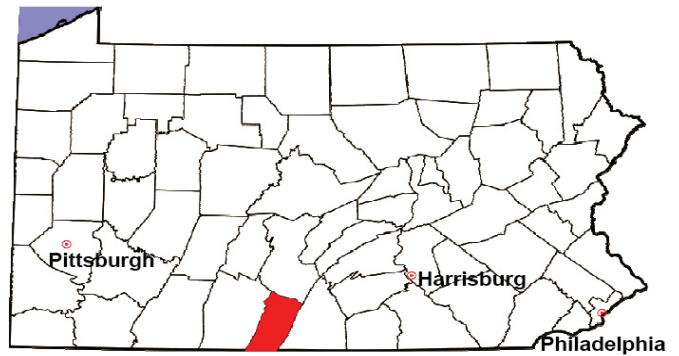
2008 Juvenile Dependency Status Offenses	No. of Petitions	%
Cases Pending 1/1/08	1	
New Cases Filed in '08	0	
Cases Available for Processing	1	
Processed By:		
Judge	1	100.0%
Non-Judicial Officer	0	0.0%
Other	0	0.0%
Cases Processed	1	100.0%
Cases Pending 12/31/08	0	

Status Offenses New Cases Filed, 2000-2008



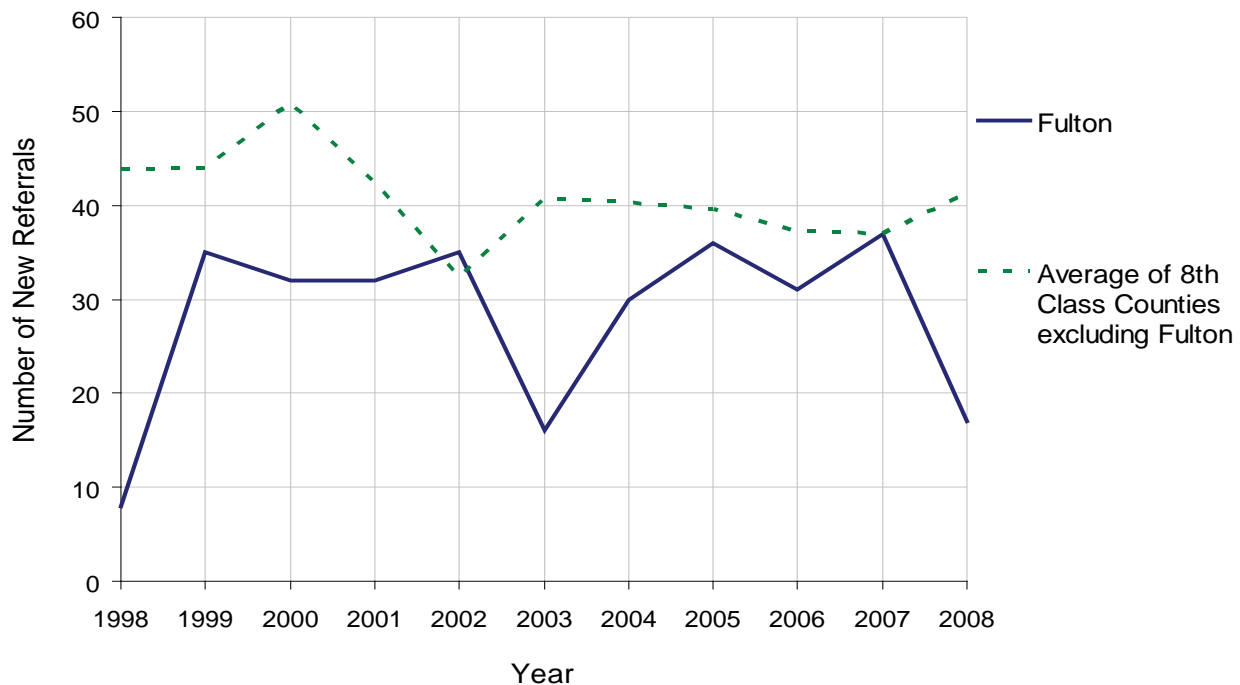
FULTON COUNTY

2008 Population Estimate: 14,935
 Class of County: 8th
 No. of Common Pleas Court Judgeships: 4
 (Franklin and Fulton combined)



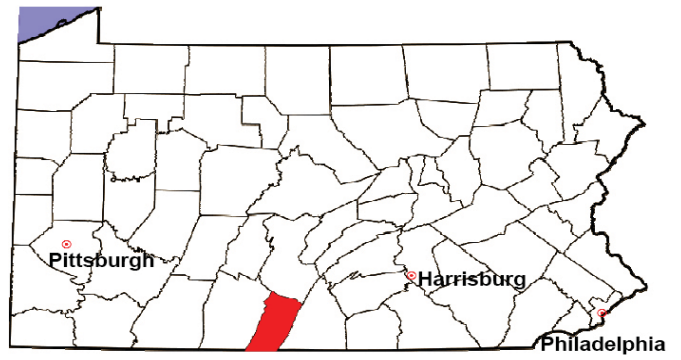
2008 Juvenile Delinquency	No. of Referrals	%
Cases Pending 1/1/08	4	
New Referrals in '08	17	
Cases Available for Processing	21	
Processed By:		
Judge	19	95.0%
Non-Judicial Officer	0	0.0%
Other	1	5.0%
Cases Processed	20	100.0%
Cases Pending 12/31/08	1	

Juvenile Delinquency New Referrals, 1998-2008



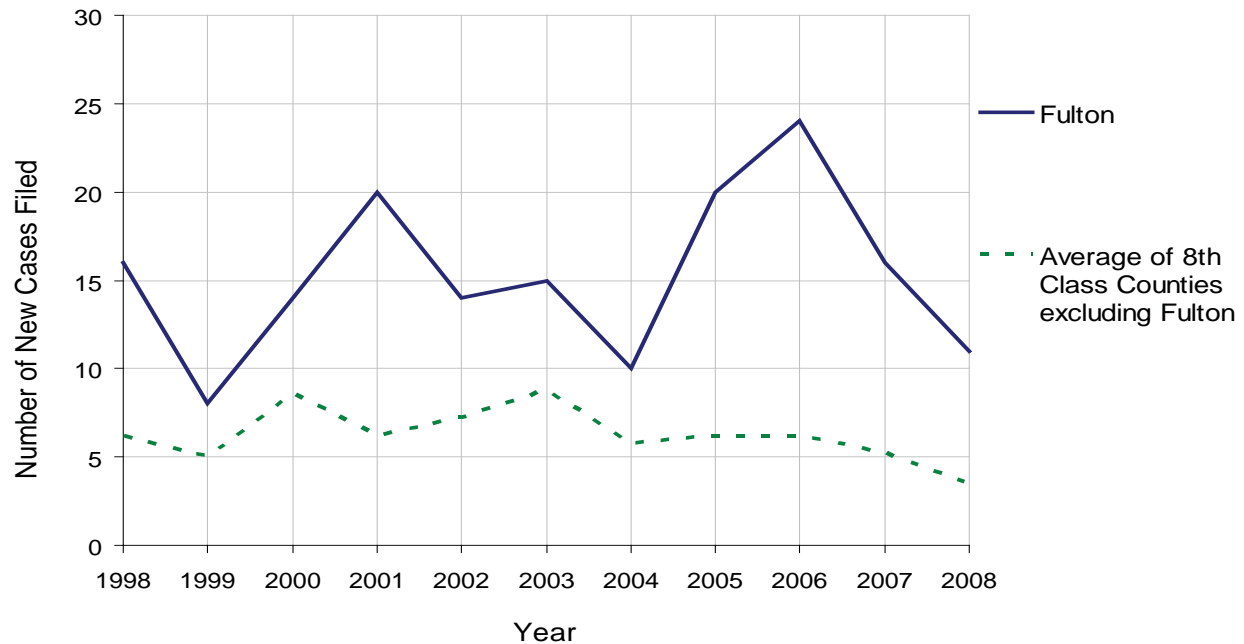
FULTON COUNTY

2008 Population Estimate: 14,935
 Class of County: 8th
 No. of Common Pleas Court Judgeships: 4
 (Franklin and Fulton combined)



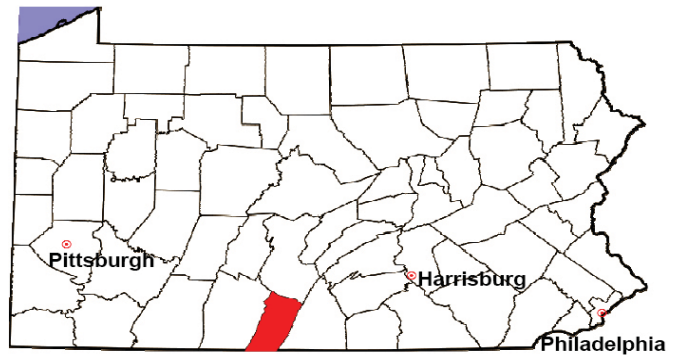
2008 Accounts	No. of Accounts	%
Cases Pending 1/1/08	1	
New Cases Filed in '08	11	
Cases Available for Processing	12	
Processed By:		
Contested before a Judge	0	0.0%
Contested before a Non-Judicial Officer	0	0.0%
Uncontested	12	100.0%
Other	0	0.0%
Cases Processed	12	100.0%
Cases Pending 12/31/08	0	

Accounts New Cases Filed, 1998-2008



FULTON COUNTY

2008 Population Estimate: 14,935
 Class of County: 8th
 No. of Common Pleas Court Judgeships: 4
 (Franklin and Fulton combined)

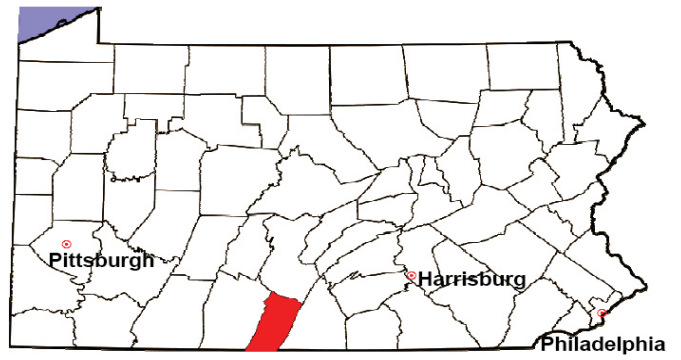


2008 Adoptions		No. of Cases	%
Cases Pending 1/1/08		1	
New Cases Filed in '08		11	
Cases Available for Processing		12	
Processed By:			
Contested before a Judge	Granted	0	0.0%
	Denied	0	0.0%
Uncontested	Granted	10	100.0%
	Denied	0	0.0%
Other		0	0.0%
Cases Processed		10	100.0%
Cases Pending 12/31/08		2	

Note: Prior to 2008, each petition was counted as one new case, regardless of the number of children listed on the petition. Starting in 2008, each child listed on a petition is counted as a separate case. Therefore, statistics for 2008 should not be compared with those for previous years.

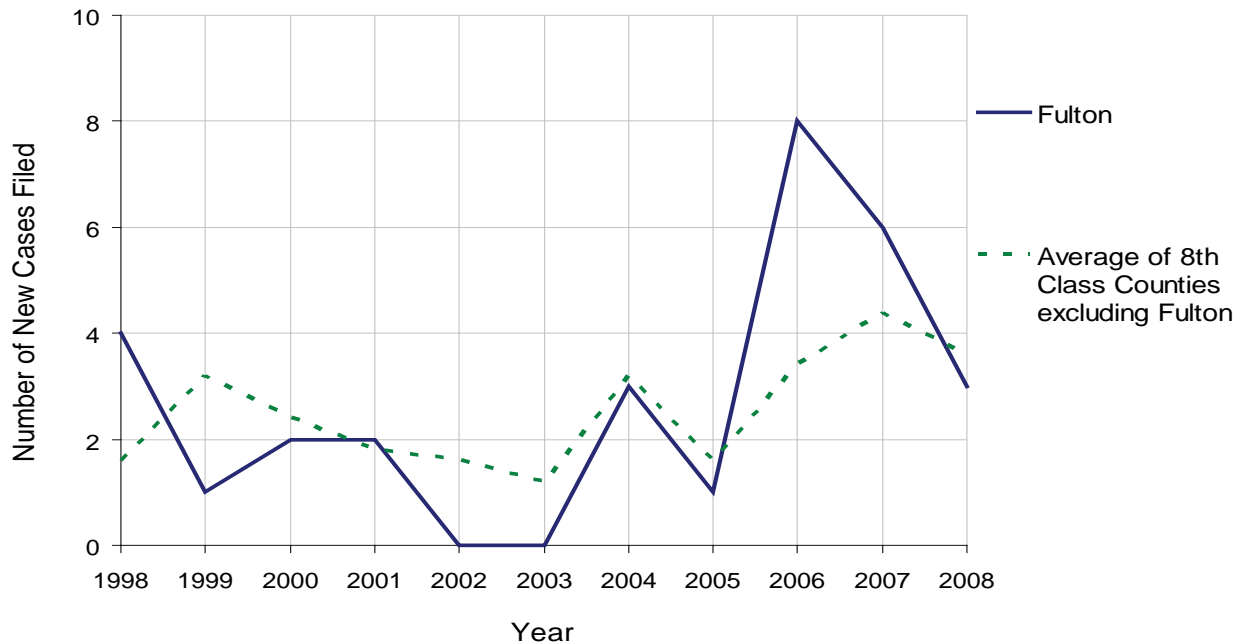
FULTON COUNTY

2008 Population Estimate: 14,935
 Class of County: 8th
 No. of Common Pleas Court Judgeships: 4
 (Franklin and Fulton combined)



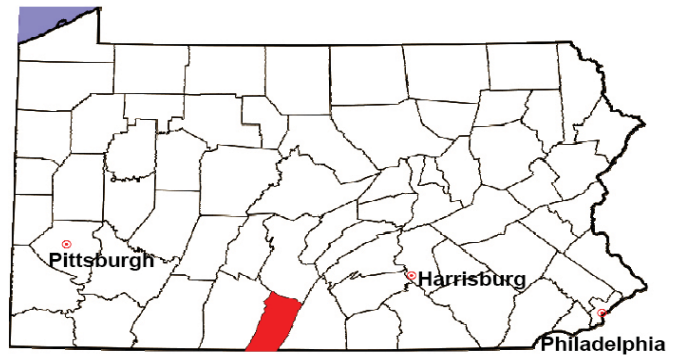
2008 Relinquishments/Terminations	No. of Petitions	%
Cases Pending 1/1/08	0	
New Cases Filed in '08	3	
Cases Available for Processing	3	
Processed By:		
Contested before a Judge	0	0.0%
Uncontested	3	100.0%
Other	0	0.0%
Cases Processed	3	100.0%
Cases Pending 12/31/08	0	

Relinquishments/Terminations New Cases Filed, 1998-2008



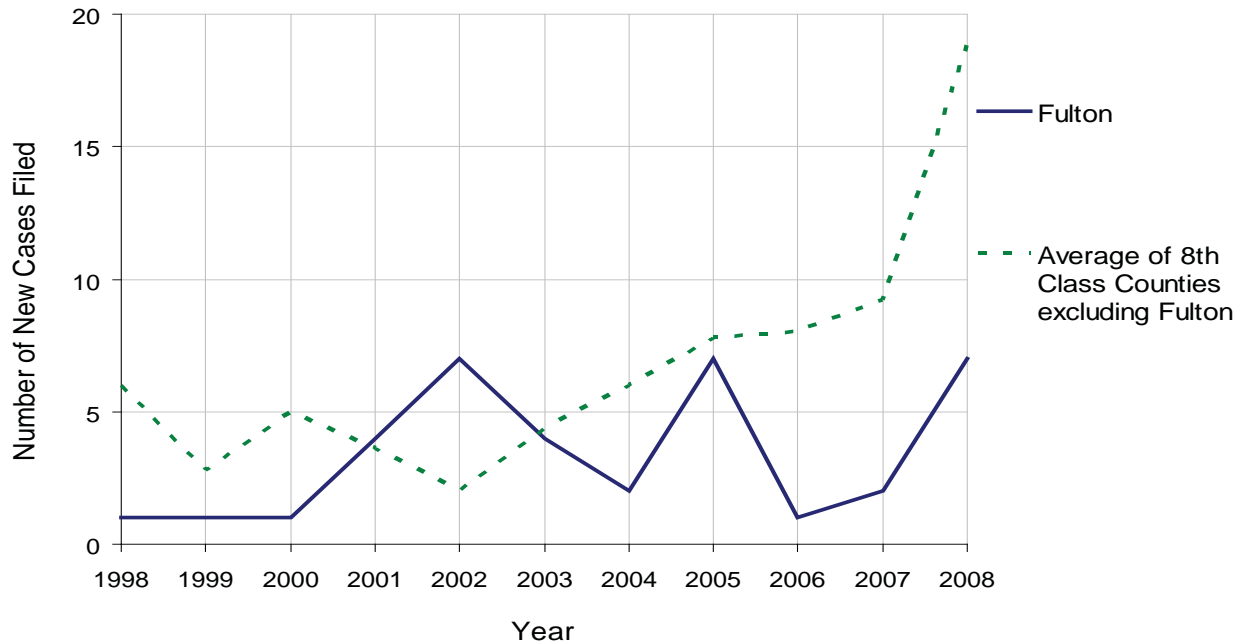
FULTON COUNTY

2008 Population Estimate: 14,935
 Class of County: 8th
 No. of Common Pleas Court Judgeships: 4
 (Franklin and Fulton combined)



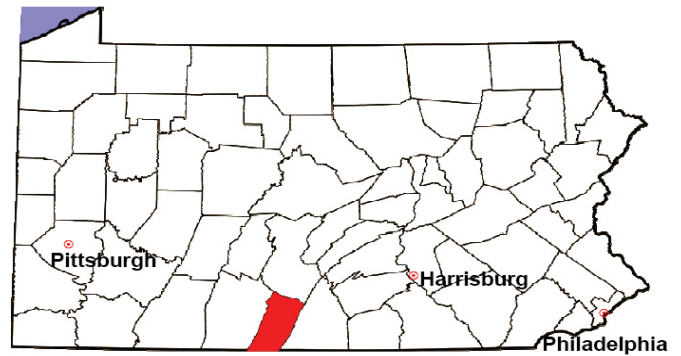
2008 Appointment of Guardians	No. of Petitions	%
Cases Pending 1/1/08	3	
New Cases Filed in '08	7	
Cases Available for Processing	10	
Processed By:		
Contested before a Judge	3	60.0%
Uncontested	2	40.0%
Other	0	0.0%
Cases Processed	5	100.0%
Cases Pending 12/31/08	5	

Appointment of Guardians New Cases Filed, 1998-2008



FULTON COUNTY

2008 Population Estimate: 14,935
 Class of County: 8th
 No. of Common Pleas Court Judgeships: 4
 (Franklin and Fulton combined)



2008 Jury Activity & Performance Measures		
A. Juror Days	373	
B. Number Sent to Voir Dire	516	
Voir Dire Attendance Rate $(B/A * 100)$		138.3%
C. Number of Voir Dires Started	12	
Juror Days Per Voir Dire Starts (A/C)		31
D. Number of Jurors Selected	168	
Juror Selection Rate $(D/B * 100)$		32.6%
E. Number of Jury Trials Started	9	
Juror Days Per Trial Starts (A/E)		41
Number of Voir Dires Not Resulting in Trial $(C-E)$		3
Percent Voir Dires Not Resulting in Trial $(C-E)/C * 100$		25.0%
F. Pool Days	4	
G. Zero Panel Days	0	
Percent Zero Panel Days $(G/F * 100)$		0.0%
H. Total Juror Fees Incurred	\$6,316	
Average Juror Fees Per Trial (H/E)		\$702

Average Juror Fees Per Trial, 1998-2008

